

1916

# Hush-a-bye, ma baby

John Valentine Eppel

J.R. Shannon

Frederic Knight Logan

Follow this and additional works at: <http://digitalcommons.ithaca.edu/sheetmusic>



Part of the [Music Commons](#)

---

## Recommended Citation

Eppel, John Valentine; Shannon, J.R.; and Logan, Frederic Knight, "Hush-a-bye, ma baby" (1916). *Sheet Music Collection*. 88.  
<http://digitalcommons.ithaca.edu/sheetmusic/88>

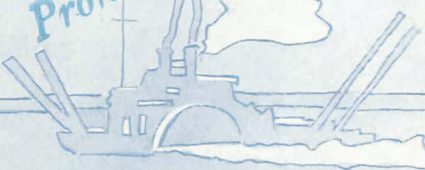
This Book is brought to you for free and open access by the Library at Digital Commons @ IC. It has been accepted for inclusion in Sheet Music Collection by an authorized administrator of Digital Commons @ IC.

HUSH - A - BYE , MA BABY

# MISSOURI

## WALTZ

### SONG

For  
Professional  Ten

From an Original Melody

Produced By

John Valentine Eppel

REVISED EDITION

ARRANGED FOR PIANO BY

## FREDERIC KNIGHT LOGAN

"ALSO PUBLISHED IN FOLLOWING ARRANGEMENTS"

Dance Orchestra ( <i>Waltz</i> )	50c	small and piano
Dance Orchestra ( <i>Waltz</i> )	75c	full and piano
Piano Solo	40c	
Band	50c	
Medley Dance Arrangement ( <i>Fax-Fax</i> ) with Naughty Waltz	75c	small and piano
	1.00	full and piano
Piano - Accordion	40c	
Cornet and Piano	40c	
Vocal Duet	40c	
Piano - Accordion Band (Conductor Score and 6 Parts)	2.00	
<b>OCTAVO</b>		
Male Voices	15c	Two Part Treble 15c
Mixed Voices	15c	S.A.B. (Soprano, Alto and Baritone) 15c

FORSTER MUSIC PUBLISHER INC.  
235 SOUTH WABASH AVE  
CHICAGO

# Hush-a-bye, Ma Baby

(The Missouri Waltz)

Music from an Original  
Melody procured by  
John Valentine Eppel

Lyric by  
J. R. SHANNON

Tune Ukulele  
G C E A

Arr. for piano by  
FREDERIC KNIGHT LOGAN

*Slowly and dreamily*

*Dreamily*

Hush - a - bye, ma ba - by, slum-ber-time is com - in' soon; Rest yo' head up - on ma breast while

Mam - my hums a tune; The sand-man is call - in' where shad-ows are fall - in', While the soft breez - es

sigh as in days long gone by. 'Way down in Mis-sour - ri where I heard this mel - o - dy,

When I was a Pick - a - nin - ny on ma Mam-my's knee; The dark-ies were hum-min', Their ban - jos were

\* If necessary, the lowest note in right hand chords and octaves may be omitted.

- Piano-Accordion 50¢
- Male Voices 15¢
- Mixed Voices 15¢
- Two Part Treble 15¢
- Band 50¢
- Orchestra 50¢

67 67 F Dm

strum-min' So sweet and low. Strum, strum, strum, strum, strum,

Seems I hear those ban-jos play - in' once a - gain, Hum, hum, hum, hum, hum, That

Interlude

same old plain - tive strain.

Hear that mourn - ful mel - o - dy, It just haunts you the

whole day long, And you wan-der in dreams back to Dix - ie it seems, When you hear that

L.H. pp



old time song. Hush - a - bye, ma ba - by, go to sleep on Mam - my's knee,

*1st Mo.*

Jour - ney back to Dix - ie-land in dreams a - gain with me; It seems like yo Mam - my was there once a -

gain, And the dark - ies were strum - min' that same old re - frain. Way down in Mis - sou - ri where I

learned this lul - la - by, When the stars were blink - in' and the moon was climb - in' high, And I hear Mam - my

Cloe, as in days long a - go Sing - in' hush - a - bye.

# SONGS YOU SHOULD HAVE

## DREAM TRAIN



Copyright MCMXXVII by Milton Weil Music Co., Chicago, Ill.

Copyright Transferred 1932 to Forster Music Publishers, Inc., Chicago.

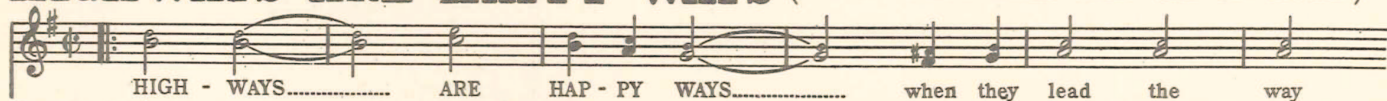
## OLD VIRGINIA MOON



Copyright MCMXXIV by Milton Weil Music Co., Chicago, Ill.

Copyright Transferred 1932 to Forster Music Publishers, Inc., Chicago.

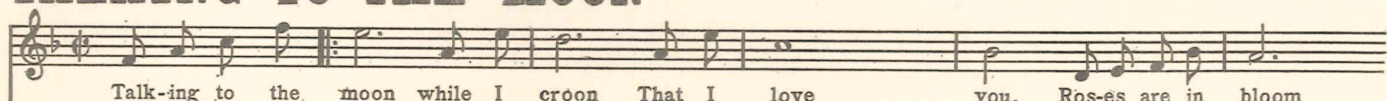
## HIGHWAYS ARE HAPPY WAYS (WHEN THEY LEAD THE WAY TO HOME)



Copyright MCMXXVII by Milton Weil Music Co., Chicago, Ill.

Copyright Transferred 1932 to Forster Music Publishers, Inc., Chicago.

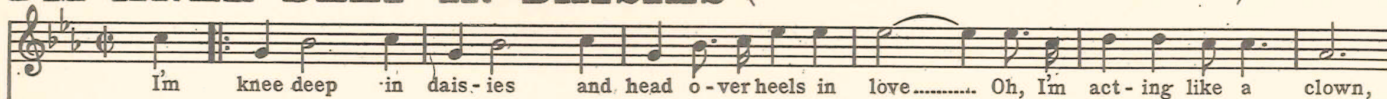
## TALKING TO THE MOON



Copyright MCMXXVI by Milton Weil Music Co., Chicago, Ill.

Copyright Transferred 1932 to Forster Music Publishers, Inc., Chicago.

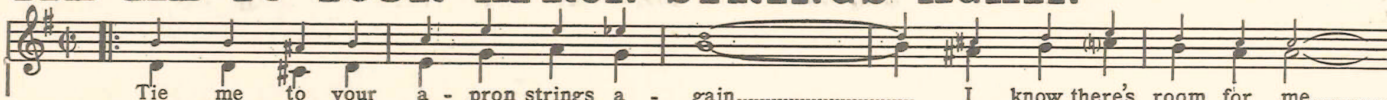
## I'M KNEE DEEP IN DAISIES (AND HEAD OVER HEELS IN LOVE)



Copyright MCMXXV by Milton Weil Music Co., Chicago, Ill.

Copyright Transferred 1932 to Forster Music Publishers, Inc., Chicago.

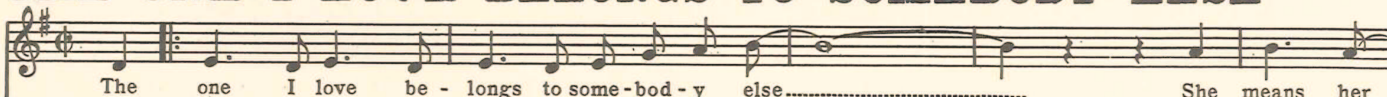
## TIE ME TO YOUR APRON STRINGS AGAIN



Copyright MCMXXV by Milton Weil Music Co., Chicago, Ill.

Copyright Transferred 1932 to Forster Music Publishers, Inc., Chicago.

## THE ONE I LOVE BELONGS TO SOMEBODY ELSE



Copyright MCMXXIV by Milton Weil Music Co., Chicago, Ill.

Copyright Transferred 1932 to Forster Music Publishers, Inc., Chicago.

Get it from your Music Dealer. Price 40¢ per copy. If for any reason he won't supply you mail amount stated direct to the Publisher.  
**Forster Music Publisher, Inc., 216 South Wabash Ave., Chicago, Ill.**

# Lonesome - That's All



LEE S. ROBERTS  
BEN J. BRADLEY

It seems like a year since I've seen you dear, Yet I know its been on-ly a day,..... But the  
hours seem long; and the world goes wrong; For it's empty with you a - way;..... And I wake

*mf*

*rit.* *a tempo* *rit.* *a tempo cresc* *mf*

# That Little Boy Of Mine

A Rube Bennett Arrangement

Piano Tune Uke in D  
A D F# B

Words and Music by  
BENNY MEROFF, WAYNE KING  
& WALTER HIRSCH

## CHORUS

*Tenderly*

A ti - ny turned up nose, Two cheeks just like a rose, So sweet from head to toes, THAT LIT-TLE  
BOY OF MINE, Two arms that hold me tight, Two eyes that shine so bright, Two lips that kiss "Good-Night"

*p-f*

International Copyright Secured

Copyright MCMXXIX by Milton Weil Music Co., Chicago, Ill.  
Made in U.S.A.  
Copyright transferred 1932 to Forster Music Pub. Inc. Chicago

All Rights Reserved

GET IT FROM YOUR MUSIC DEALER. PRICE 40c PER COPY & IF FOR ANY REASON HE  
WON'T SUPPLY YOU MAIL AMOUNT STATED DIRECT TO THE PUBLISHER

FORSTER MUSIC PUBLISHER, Inc., 218 South Wabash Avenue, CHICAGO, ILL.

SEND 6c FOR 64 PAGE POPULAR CATALOG, AND 10c FOR THREE STANDARD CATALOGS