

7-10-2013

RE.Invest

Denise Thompson
City of Norfolk, VA

Follow this and additional works at: https://digitalcommons.odu.edu/hraforum_03

 Part of the [Climate Commons](#), [Environmental Policy Commons](#), [Infrastructure Commons](#), [Public Administration Commons](#), [Public Policy Commons](#), and the [Urban Studies and Planning Commons](#)

Repository Citation

Thompson, Denise, "RE.Invest" (2013). *July 10, 2013: Best Practices and Communications Strategies for Adapting to Sea Level Rise and Flooding. 2.*
https://digitalcommons.odu.edu/hraforum_03/2

This Presentation is brought to you for free and open access by the Hampton Roads Sea Level Rise/Flooding Adaptation Forum at ODU Digital Commons. It has been accepted for inclusion in July 10, 2013: Best Practices and Communications Strategies for Adapting to Sea Level Rise and Flooding by an authorized administrator of ODU Digital Commons. For more information, please contact digitalcommons@odu.edu.



**Hampton Roads Sea Level Rise/Flooding
Adaptation Forum
July 10, 2013**

Washington Post

May 22, 2013 | NORFOLK, Va. - Flood-prone Norfolk is one of eight cities nationwide chosen by the Rockefeller Foundation for a program to finance and build better storm water infrastructure.



COLONY OF VIRGINIA



0 1 2 3 4 5 6 7 8 9 10 1000 feet

Upper Highway to June 1623

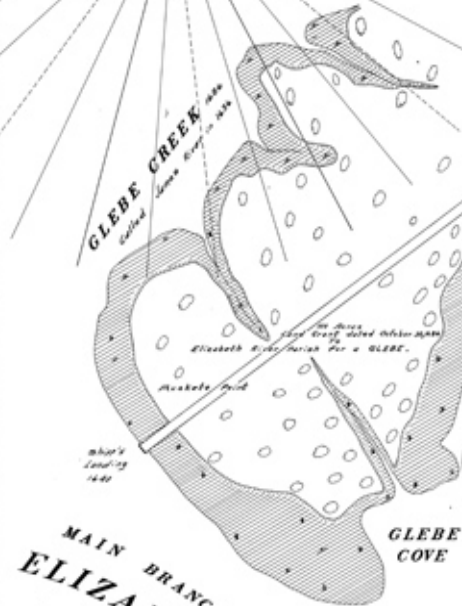


NORFOLK COUNTY established in 1637

DUN IN THE MIRE 1644

The gun were finally burnt and mired, and together, stone, and! that is in the figure. For that no man, for anyone in the world, that will make use of this at length, I believe, 1644.

Public Landing and place appointed for Public Landing.



GLEBE COVE

MAIN BRANCH ELIZABETH RIVER 1635

FOURE FARTHING POINTE

TOWN BACK CREEK

first EASTERN BRANCH



Royal Governors:
 Thomas, Second Lord Colchester, Baron Thersway,
 Governor and Captain-General, 1606-1609;
 Sir Henry Chicheley, Deputy Governor,
 Francis, Lord Howard of Effingham,
 Lieutenant Governor, 1610-1614;
 Colonel Thomas Mathews,
 Lieutenant Governor, 1614-1616;
 Sir Edmund Bacon,
 Governor and Captain-General, 1616-1618;
 George Hamilton, Deputy, Earl of Montgomery,
 Governor-in-Chief, 1618-

Annual Fair:
 The 17000 Day of October and a day
 Following, exclusive of Sunday.

Market Days:
 Tuesday and Saturday

ORIGINAL 50 ACRES
 sold and conveyed by Nicholas Wren
 Whittaker, to Messrs. William Dabney
 and William Dabney, Merchants in London
 for the Norfolk Town Land in witness
 whereof, I have hereunto put my hand
 and set my Seal and Seal, this 10th day of
 August, 1682, and in the 12th year of the
 reign of our sovereign Lord, King Charles the
 Second, our legitimate Heir, Prince and
 Elector, Palatine, of the Palatinate, &
 Duke, of York and Seal
 Wm. Dabney and Seal
 Clerk



65.75 Sq Miles 1782



Norfolk towne
 John Parson, County Surveyor, 1681-82



NORFOLK'S ORIGINAL FIFTY ACRES



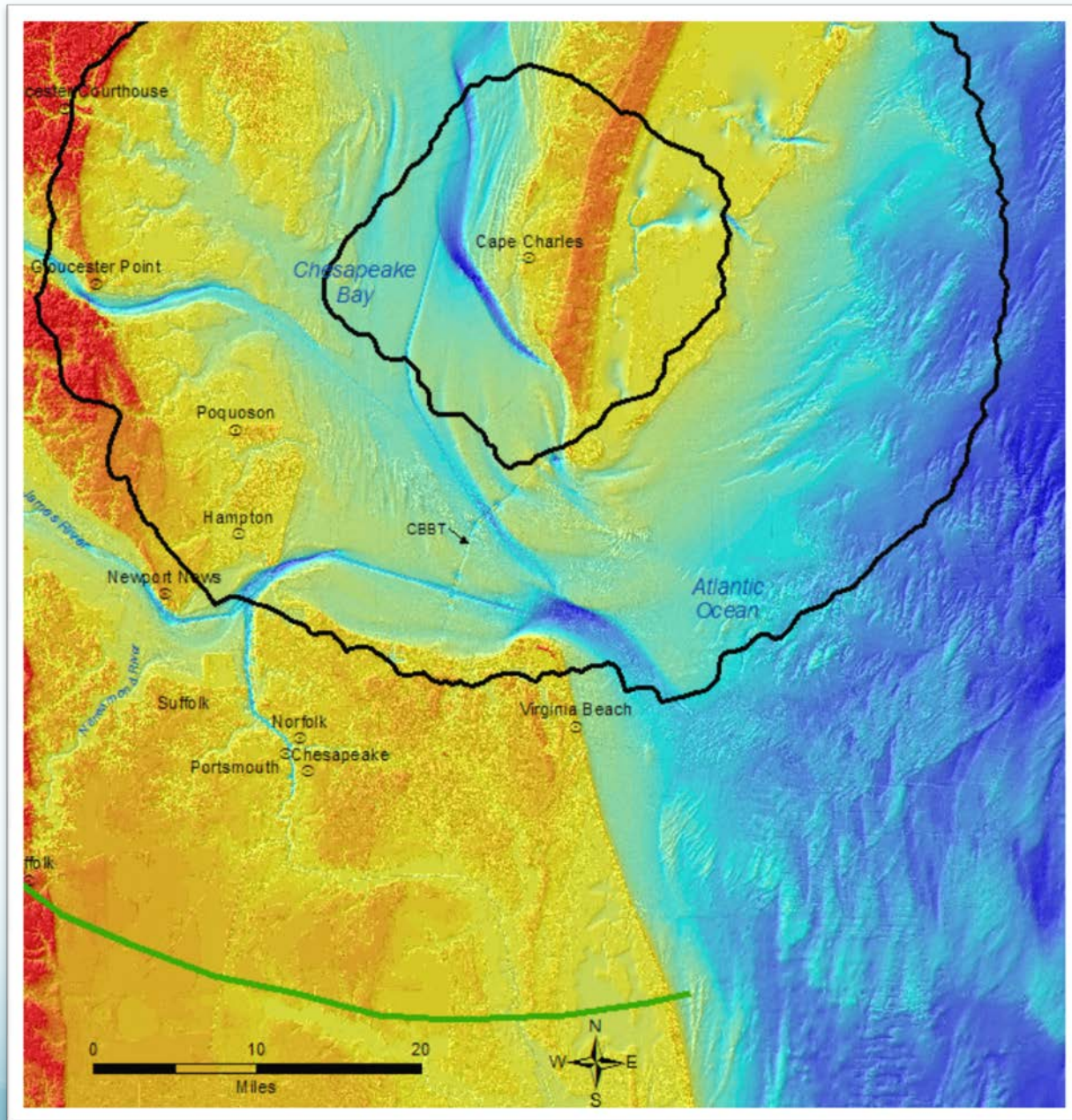
John Ferabee, County Surveyor 1680 - 1681
John Ward, City Surveyor 2006 - Present



This map depicts the original fifty acres of Norfolk overlaid upon 2013 imagery. This was created in multiple steps:
First, the original "Norfolk Towne, 50 Acres, 1682" map was scanned.
Next, city staff consulted with local historians to determine sites that still exist today.
Then, field crews were sent out to collect GPS coordinates on the previously determined locations.
Finally, the scanned image was georeferenced to the GPS points and the fifty acre boundary was digitized by a city technician.
2013 Imagery is property of Pictometry International.
Map completed October 2008, Updated 2013.
This map is for graphic purposes only.



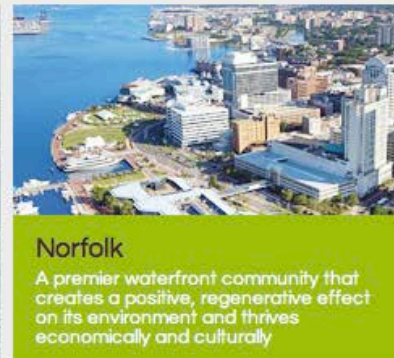




Seeking Private Sector Investment



[Home](#) [About RE.invest](#) [RE.invest Team](#) [Partner Cities](#) [Media](#) [Contact Us](#)



Norfolk

A premier waterfront community that creates a positive, regenerative effect on its environment and thrives economically and culturally

Re.invest Initiative cities include: El Paso, Hoboken, Honolulu, Miami, Milwaukee, New Orleans, Norfolk and San Francisco

Post-Sandy initiative to develop resilient urban stormwater infrastructure

- Two-year initiative, funded by the Rockefeller Foundation.
- Rethink the way cities design, plan, implement and finance urban infrastructure.
- RE.invest will reduce the burden placed on city personnel and public budgets by using public resources more efficiently and attracting new sources of private investment.

Provides technical assistance from engineering, law and finance experts

"The RE.invest initiative is a smart approach for cities looking to improve vital infrastructure in a way that attracts new sources of private investment. We are... providing the type of credible financial experts who will think creatively about ways to invest in the resilience of our communities."

--- John Nelson, Managing Partner of Wall Street Without Walls

Making projects on the drawing board a reality

"We are looking forward to using our technical know-how, our history of applying creative thinking to infrastructure planning, and our ability to help make projects become a reality."

--- Walker Kimball, Managing Director, Infrastructure, at Bechtel



Smart planning, innovation and an integrated approach

- Focus on sustainable stormwater infrastructure systems: green rooftops, trees, wetlands and repaved roads with more permeable surfaces.
- Partners will identify new ways to bundle revenue streams so cities can effectively work with private investors and the private sector to make smart improvements to their local infrastructure.
- RE.invest will help cities and private sector partners connect the dots. Can power lines be buried when the road is opened? Can the road be repaved with absorbent asphalt to reduce water runoff ?



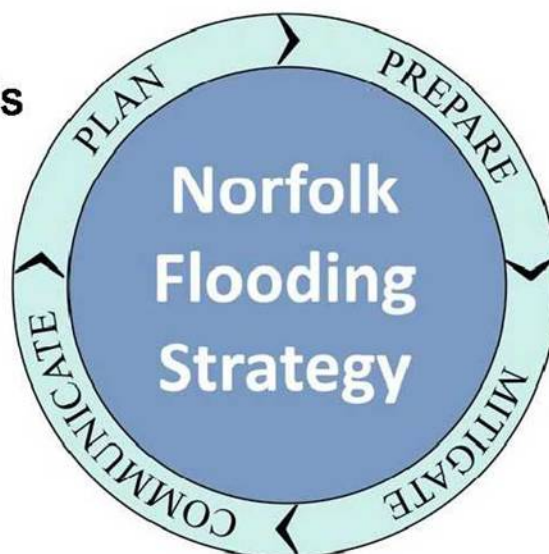
Norfolk Flooding Strategy

Plan

- City planning
- Study and analysis
- Modeling & simulation

Communicate

- Citizen outreach
- Partnerships
- Online resources



Prepare

- Emergency Preparedness & Response
- Education & Training

Mitigate

- Infrastructure development
- Flood remediation and mitigation