

3-9-2016

# Intergovernmental Pilot Program

Ray Toll

Old Dominion University, [rtoll@odu.edu](mailto:rtoll@odu.edu)

Follow this and additional works at: <https://digitalcommons.odu.edu/odurc-presentations>

 Part of the [Environmental Sciences Commons](#), [Oceanography and Atmospheric Sciences and Meteorology Commons](#), and the [Public Affairs, Public Policy and Public Administration Commons](#)

---

## Repository Citation

Toll, Ray, "Intergovernmental Pilot Program" (2016). *ODU Presentations, Lectures, Posters*. 1.  
<https://digitalcommons.odu.edu/odurc-presentations/1>

This Presentation is brought to you for free and open access by the ODU Resilience Collaborative at ODU Digital Commons. It has been accepted for inclusion in ODU Presentations, Lectures, Posters by an authorized administrator of ODU Digital Commons. For more information, please contact [digitalcommons@odu.edu](mailto:digitalcommons@odu.edu).



Welcomes you

the 2016  
**Public Policy Forum**

SCIENCE AND SOLUTIONS  
FOR A RESILIENT OCEAN



# INTERGOVERNMENTAL PILOT PROGRAM:

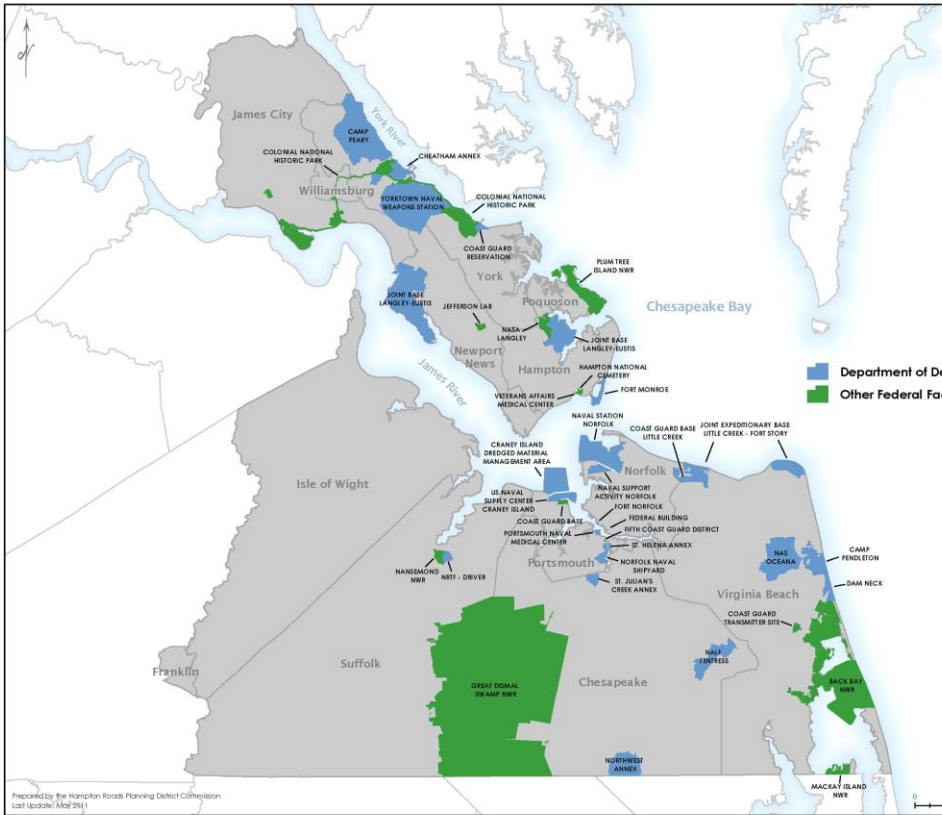
March 9, 2016



**OLD DOMINION**  
UNIVERSITY

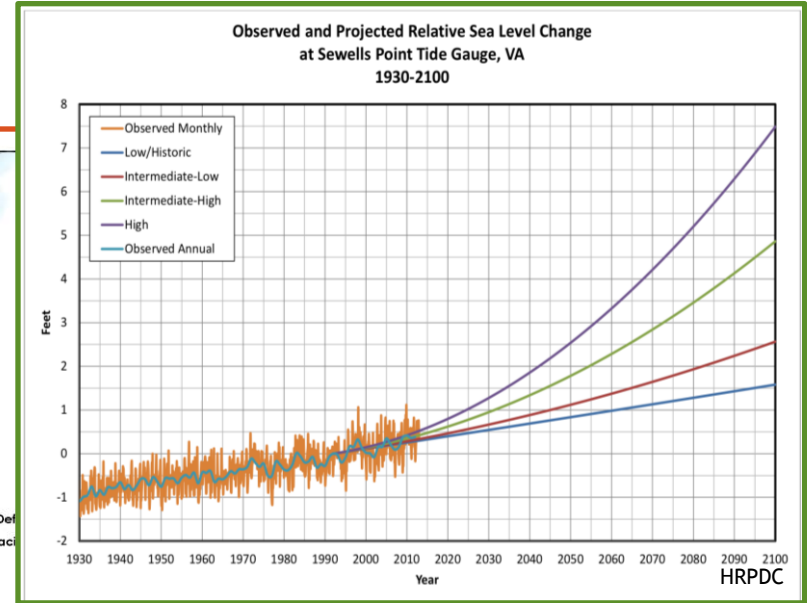
IDEA FUSION

# Federal Facilities & SLR in Hampton Roads



Prepared by the Hampton Roads Planning District Commission  
Last Update: April 2011

Courtesy of HRMFFA



HRPDC

# Intergovernmental Pilot Program

## MISSION

- Develop a regional “WHOLE OF GOVERNMENT” and “WHOLE OF COMMUNITY” approach to SLR Preparedness and Resilience Planning by June 2016

## VISION

- An **intergovernmental planning organization** that can effectively coordinate the sea level rise preparedness and resilience planning of Federal, state and local government agencies and the private sector, taking into account the perspectives and concerns of the citizens of the region.

# Timeline

## Phase I

- Charter Signed
- Stakeholder Engagement & Fact Finding
- Committees Develop Work Plans & Deliverables

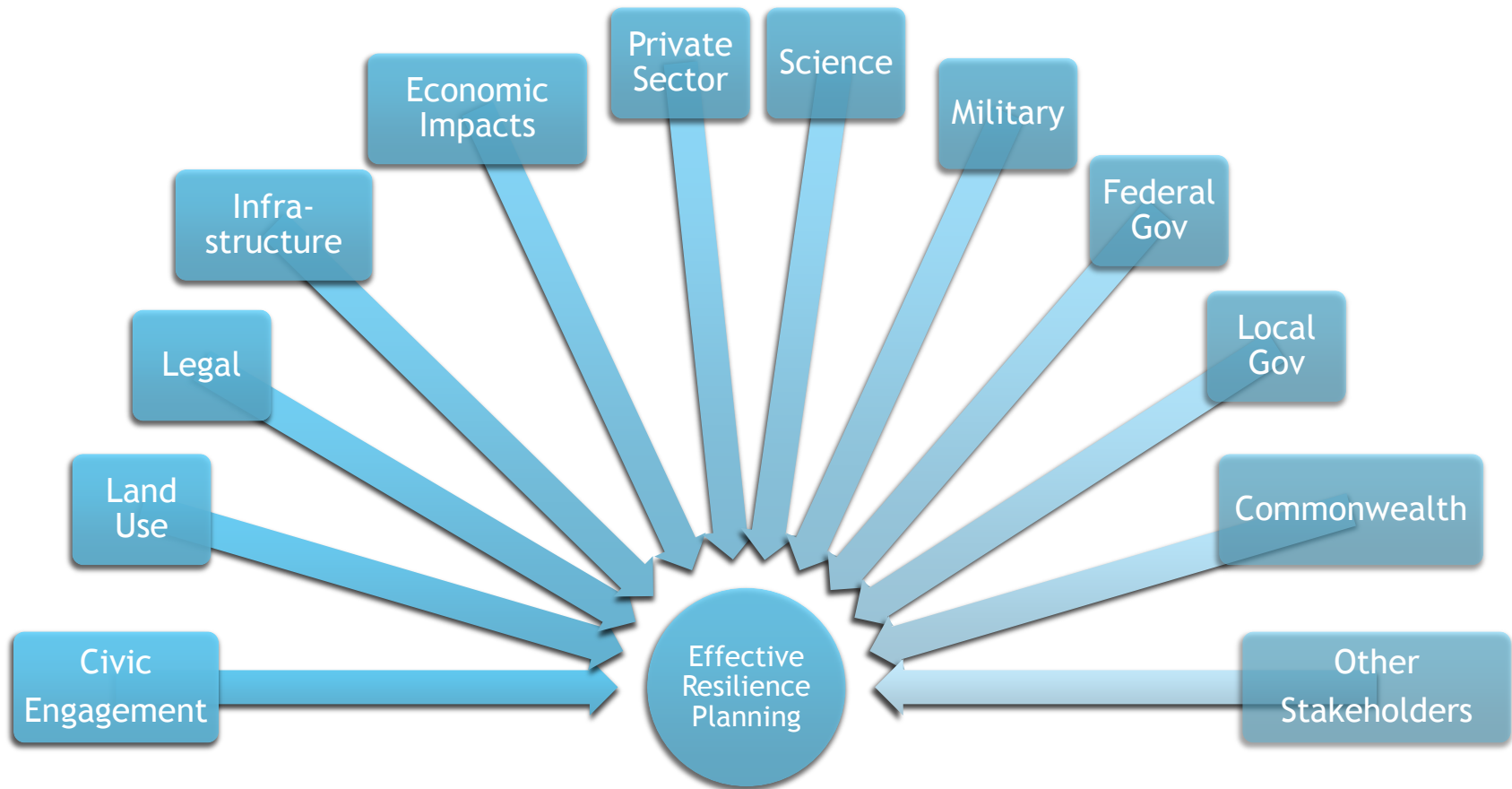
## Phase II

- Focus on Regional and Model Deliverables
- Develop Collaborative Organization
- Data Integration

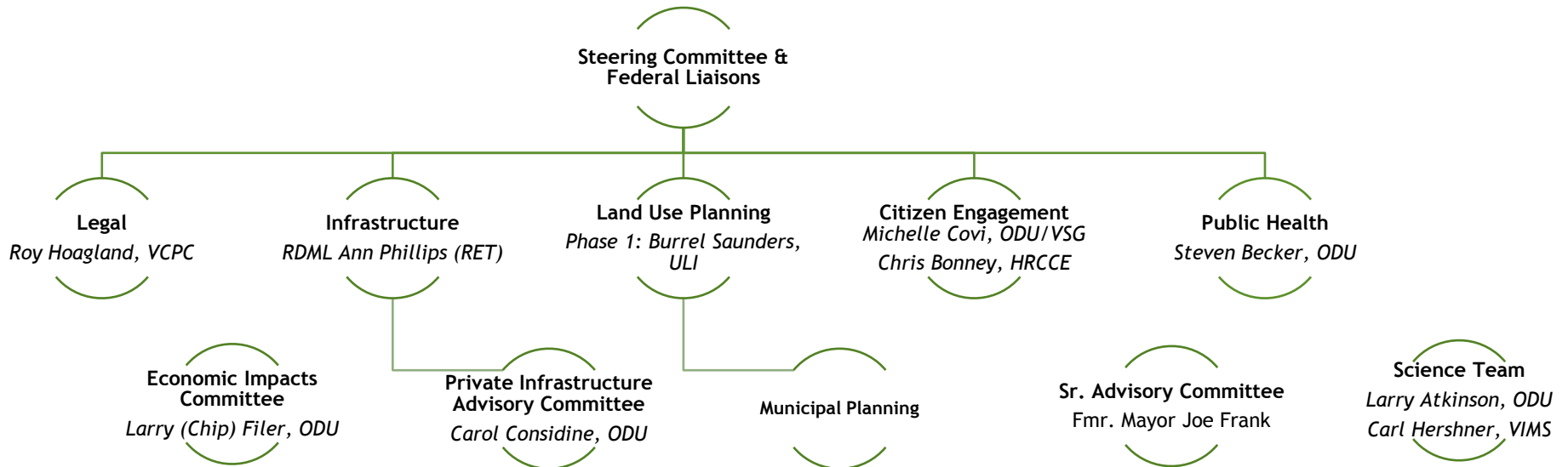
## Future

- Continued “Whole of” Collaboration for Effective and Efficient SLR Planning in Hampton Roads
- Network of Regions

# Whole of Government & Community



# Current Operating Structure





# Local Leadership

<b>STEERING COMMITTEE</b>	
<b>Randy Keaton - Chair</b>	<i>Deputy Executive Director, Hampton Roads Planning District Commission</i>
<b>Shawn Talmadge - Deputy Chair</b>	<i>Homeland Security and Resiliency Staff Director, Commonwealth of Virginia</i>
Mayor Kenneth Wright	<i>Chair, HRPDC; Mayor, City of Portsmouth</i>
Kit Chope	<i>VP, Sustainability Director, Virginia Port Authority</i>
Angela Navarro	<i>Deputy Secretary of Natural Resources, Commonwealth of Virginia</i>
Timothy Fortune	<i>Engineering Manager, Newport News Shipyard, Huntington Ingalls</i>
Jim Utterback	<i>Virginia Department of Transportation, Hampton Roads Director</i>
Heather Wood	<i>Consultant to the Port, Kennedy Jenks</i>
Sharon Baxter	<i>Director, Division of Environmental Enhancement, Virginia DEQ</i>
Christine Morris	<i>Chief Resiliency Officer, City of Norfolk</i>
Phil Davenport	<i>Director of Public Works, City of Virginia Beach</i>
<b>FEDERAL LIAISONS</b>	
RDML Rick Williamson	<i>Commander Naval Region Middle Atlantic</i>
COL Jason Kelly	<i>USACE, Commander Norfolk District</i>
CAPT George Bonner	<i>Commanding Officer USCG Shore Infrastructure Logistics Center</i>
Teddie Thorogood	<i>Chief, Resources and Planning, USCG District 5</i>
CAPT Pat Rios	<i>Commanding Officer NAVFAC Middle Atlantic</i>
COL Caroline Miller	<i>Commander Joint Base Langley-Eustis</i>
<b>CONVENER</b>	
Ray Toll	<i>Director for Coastal Resilience Research, Old Dominion University</i>

# Federal Support

## ❖ DC SPONSORS:

- ❖ White House Offices (CEQ, NSC, OSTP)
- ❖ Senator. Kaine
- ❖ Dep. Sec. Def. Conger; ASN McGinn; RADM White and Slates

## ❖ SUPPORTING AGENCIES: DoD, DHS, EPA, NOAA, NASA, DoE, DoT, HUD, FEMA, DoD (Navy as lead service), DoI, USACE

# Phase 1 Milestones

## Summer 2014

- Pilot Kickoff @ TechSurge on June 3, 2014
- Rising to the Challenge: Bipartisan Forum Organized by Sen. Kaine
- Governors Climate Commission Announced
- Website Launch: [www.centerforsealevelrise.org](http://www.centerforsealevelrise.org)

## Fall 2014

- Charter Drafted and Signed
- Sen. Kaine sends letters to agencies urging participation in Pilot Project
- Recurrent Flooding Sub-Panel Recommendations Submitted to SCP

## Winter 2014-2015

- FEMA NEP Tabletop Exercise
- HRPDC Votes to Officially Participate in the Pilot
- Committees Begin Work Engaging Stakeholders and Developing Workplans

## Spring 2015

- Continued Committee Work
- FEMA FFRMS Public Listening Session
- ULI Resilient Region Reality Check

## Summer 2015

- Steering Committee Strategic Planning Session
- Legal Primer
- Phase 1 Report

# Proposed Pilot Specific Deliverables

- ❖ Charter (October 2014)
- ❖ Report of Lessons Learned and Issues Encountered and Overcome
- ❖ Draft Organizational Structure for Regional SLR Planning
- ❖ MOU Establishing Intergovernmental Planning Organization



# Proposed Regional Deliverables

- ❖ Trusted, Neutral Venue for Discussion, Collaboration, Planning, and Action
- ❖ Draft Principles for Living With the Water in HR
  - ❖ This is not a challenge that can be fixed, but a dynamic environment to which we must continuously adapt
  - ❖ Common (and periodically dry) ground for ongoing communication and collaboration for truly regional SLR strategic planning and action
- ❖ Clearing House Tailored for Hampton Roads
  - ❖ Localized Scientific Projections, Mapping, Simulation, etc.
  - ❖ **Integrated network of SLR & Subsidence Measurements (real-time and near-real-time)**
  - ❖ Analyses of Regionally Relevant Legal Issues & Policy Guidance Where Appropriate
  - ❖ Framework to Understand Critical Infrastructure Interdependencies in HR



# Proposed Model Template Deliverables

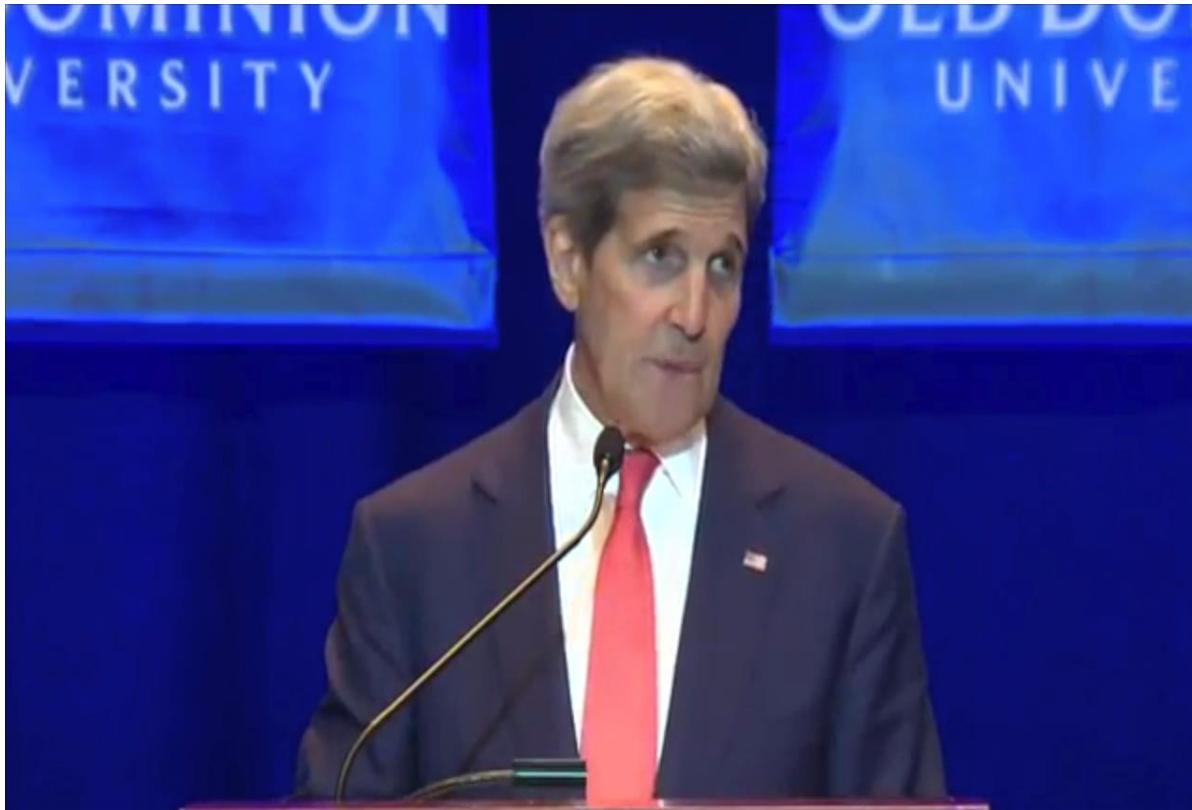


- ❖ “Whole of Government” Template for Regional Collaboration
- ❖ Customizable Base Level “Whole of Community” Engagement & Communications Template
- ❖ Public Health Resilience Toolkit
- ❖ Land Use Vulnerability Index
- ❖ Infrastructure Prioritization Toolkit (Resiliency Recommendations)
- ❖ Identification of Legal Impediments to Regional Planning and Action & Potential Solution Recommendations

# Proposed Center for Sea Level Rise

- ❖ In partnership with VIMS
- ❖ Integrate Federal, state, and local data sources creating real-time or near-real-time climate resiliency monitoring and planning network for the Hampton Roads Region.
- ❖ Use data to enable both emergency and long-term decision-making through street level predictions and more.
- ❖ Develop the network as a national model for adaptation to sea level rise.
- ❖ To provide technical assistance in implementing this model in other US regions that experience sea level rise.

# National Model





# Questions?

Ray Toll

[rtoll@odu.edu](mailto:rtoll@odu.edu)

[www.centerforsealevelrise.org](http://www.centerforsealevelrise.org)



Welcomes you

the 2016  
**Public Policy Forum**

SCIENCE AND SOLUTIONS  
FOR A RESILIENT OCEAN