

MOREHEAD STATEment.

Vol.11 No.5

March-April 1988

Colleges statewide march/rally for higher education



ONE MARCH FOR ALL—Faculty, students, and administrators combine forces to march/rally for a common cause—higher education.

Thousands of representatives from campuses statewide put aside fierce athletic rivalries and joined in one voice to show support for higher education in the Advocates March/Rally to the Capitol and in a rally later in Dudgeon Civic Center in Frankfort.

Converging on the state Capitol steps were more than 3,000 marchers—mainly students, but also faculty, staff, alumni, and concerned citizens—who carried banners, balloons, and signs to focus attention on higher education's plight under the proposed executive budget.

And that's just what the march/rally's sponsors, the Kentucky Advocates for Higher Education and Student Advocates for Higher Education, had in mind when they planned the February event.

Morehead State University, with a contingent of more than 700 supporters who came via a motorcade of 10 buses and some two dozen cars and vans, was highly visible at both the march and the rally.

Referring to the erosion of higher education due to budget cuts, combined with increased enrollments, Dr. A.D. Albright, a former president at MSU, said, "Part of your future has been choked . . . part of your future has been shackled."

"Anyone who is sensitive to the creation of jobs in Kentucky, anyone who is sensitive to economic development in the commonwealth . . . must somehow remove this strangulation of your future and Kentucky's future," Dr. Albright added.

Predicting a mass exodus of talented faculty, increased tuition rates and further reductions in state financial aid programs if the governor's budget is passed, CHE member and MSU alumnus David Holton described the proposed budget as "not exactly good news for public schools," and "catastrophic" for higher education.

Following the program at the Capitol, the scene shifted to the Civic Center where more than

5,000 advocates rallied around the cause of higher education with mascots, cheerleaders, and pep bands from the various institutions leading the chants.

During a "talent showcase" spotlighting student performing groups from the campuses, Gov. Wallace Wilkinson made an unexpected appearance at the Civic Center at the invitation of the student body leaders who had delivered resolutions calling for more state money for universities

to the governor and the legislative leadership.

After visiting with students and talking with newsmen, the governor left before Louisville attorney and American Bar Association president-elect Stanley Chauvin told the audience that education couldn't take any more sacrifices.

"The belt can't be tightened. The belly is already against the backbone," said Chauvin, who represented the state's 500,000 alumni and parents.

MSU observes Founders Day March 31

Morehead State University will celebrate its 66th birthday as a state institution of higher education with a series of public events on Founders Day on Thursday, March 31.

Launching the day's events will be the annual Founders Day Convocation and Awards Ceremony at 10:25 a.m. in Button Auditorium.

The convocation speaker will be Dr. Kenneth Mortimer, vice president/vice provost of Pennsylvania State University, who is internationally known for his efforts to increase quality in higher education.

His topic will be "Sense and Nonsense about Excellence in Undergraduate Education." Dr. Mortimer chaired the National Institute of Education's Study Group on the Conditions of Excellence in American Higher



Dr. Kenneth Mortimer

Education. The committee's results were published as "Involvement in Learning."

"The program for Founders Day will reflect the theme selected earlier this year, 'Entering Our Second Century of Service,'" said Buford Crager, Founders Day committee chair.

"While Founders Day celebrates MSU's 66th anniversary as a state (see Founders Day p.2, col.1)

Alumni asked to share "good feeling"

With this issue of MOREHEAD STATEment, all MSU alumni are being asked to personally join the effort to recruit students to the university.

"We invite each alumnus to share the enclosed admissions brochure with a prospective student," said MSU President C. Nelson Grote. "The brochure presents an attractive, capsulized picture of the university and includes a postpaid reply card for the student's convenience."

Conceived as a joint project of the Alumni Association and the Office of Admissions, the purpose of the mailing to all alumni of record is twofold, according to Bill Redwine, director of alumni relations.

"We want alumni to have current information on MSU's various programs and we also want to respond to those alumni who constantly ask how they can help share their good feeling about MSU with prospective students," Redwine stated.

Redwine said the brochure mailing to all alumni represents a first for the Alumni Association.

Campus Capsules

Two Morehead State University faculty members are beginning their eighth year as editors of the Southern Social Studies Quarterly (SSSQ), the journal of the Kentucky Council for the Social Studies.

They are **Dr. Charles E. Holt**, professor of history and an MSU faculty member since 1968, and **Dr. Kent Freeland**, professor of education who joined the faculty in 1977.



Freeland

Published twice yearly, the SSSQ is distributed to more than 300 subscribers nationwide, including various libraries. The editorial duo also are responsible for a twice a year newsletter for the Council.

In addition to the editorial duties, the MSU educators also present numerous regional and national workshops dealing with writing for publications, publishing newsletters, and ways to be more effective in classroom situations.

Designed primarily for social studies educators at the elementary, secondary, and college levels, the journal draws manuscripts from all over the United States as well as Canada, with five or six articles published per issue. In addition to the editors, there are approximately 40 individuals across the nation who serve as manuscript reviewers.

Ted Marshall (sociology) presented "Long Term Foster Care: Directions for the Future" at the National Association of Social Workers Conference in New Orleans. He also serves as a member of the Board of Directors for the Kentucky Council on Child Abuse. With the construction and building of a 500-bed prison in Morgan County, Marshall is chairing an advisory committee to help direct the university's efforts to meet the needs of the region.

Mike Seelig (social work) has been named contributing editor of the *Journal of Independent Social Work*.

MSU's Kentucky Gamma chapter of **Pi Gamma Mu**, International Honor Society in the Social Sciences, has been placed on the Roll of Distinction, the highest honor attainable by a chapter. Of the 160 national chapters, 3%—four or five chapters—are so honored. This is the 12th time in 17 years that the MSU chapter has earned this honor.

Ruth Davis (word processing coordinator for Computing Services) has been elected as chair of the newly-established Staff Congress at Morehead State University.

She was elected along with two other officers to serve a one-year term. Others elected were: Ron Jones, property accounting officer, vice chair; and Wanda Mayse, bookkeeper in the Office of the dean of the College of Applied Sciences and Technology, secretary.

The MSU Staff Congress was organized earlier this year to create a stronger bond within the staff, and to promote cooperation among the administration, faculty, students, and staff.



Patton

Margaret Patton (sociology) is a nominee for Pi Gamma Mu's Distinguished Service Award. She founded the Kentucky Gamma at MSU in 1969.

Edward B. Reeves's (sociology) "Anthropology in the International Sorghum/Millet Research Project" will appear in *Anthropological Praxis*.

Graduate and Special Academic Programs extend hours

Morehead State University's Office of Graduate and Special Academic Programs is now open for four evenings a week.

The office hours are 8 a.m. to 6:30 p.m. Monday through Thursday and 8 a.m. to 4:30 p.m. on Friday. Graduate students who need assistance not only may stop by the office, but also call to obtain information during the new evening hours. The telephone number is (606) 783-2039.

"With so many of our graduate students working and unable to come to the campus to talk with our graduate program coordinator during regular administrative office hours, we decided offering extended service hours would be beneficial to them," said Dr. James Gotsick, dean of graduate and special academic programs.

"We hope this accessibility will alleviate one roadblock to the pursuit of a graduate degree," he added.

MSU receives award of excellence

Morehead State University has received an Award of Excellence in visual design from the Council for Advancement and Support of Education (CASE).

The award-winning entry—a brochure and poster for MSU's 1987 Appalachian Celebration—was one of 149 entries in the design for print competition sponsored by CASE District III.

The design concept was by Cindy Gray of the Office of Publications with technical production by Rick D. Adkins of the Office of Printing Services.

"MSU has a longstanding tradition of excellence in publications as a result of the efforts of a talented and creative staff," said MSU President C. Nelson Grote. "We are pleased to see this recognition continue, especially from our colleagues in institutional advancement."

All winning entries were on display at the District III Conference Feb. 14-17 in Atlanta.

District III is composed of nine states: Kentucky, Virginia, Tennessee, North Carolina, South Carolina, Georgia, Alabama, Mississippi, and Florida.



Alumni Assoc. has new logo

The Morehead State University Alumni Association has a new logo which is now being used on all official correspondence and publications of the Alumni Association.

Bumper stickers with the new logo will be mailed by the alumni office to all active members in the near future, Bill Redwine, MSU's alumni relations director, said.

The new logo incorporates the university's logo to emphasize the spirit of close cooperation between the Association and the university. "The new logo symbolizes the joining of our resources for the betterment of the university," Redwine added. "The idea has been discussed for several years and we are very pleased to see it now become a reality."

In the past, the MSU Alumni Association has had several different logos. Changes in the symbols were made to reflect various developments in the history of the alumni association. When the Alumni Center was built, its silhouette became the logo and remained so until the adoption of the new logo.

Founders Day (cont. from p.1)

institution of higher education, the university's predecessor institution opened its doors on Oct. 3, 1887," he added.

MSU's 1988 Founders Day Award for University Service also will be presented at the convocation which will be followed by a noon luncheon in the Crager Room of the Adron Doran University Center.

During the luncheon, the Office of Development and MSU Foundation will recognize key

contributors and volunteers. Reservations for the \$6-per-plate luncheon are encouraged and may be made with Anna Mae Riggle by calling (606) 783-2071.

Founders Day activities also will include recognition of outstanding alumni with induction into the Alumni Hall of Fame at the Alumni Awards Dinner scheduled for 7 p.m. in the Crager Room.

Dinner tickets will be \$10 each and may be reserved through Riggle or by calling the Alumni Center at (606) 783-2080.

For those persons who plan to attend both the luncheon and dinner, there is a special combination ticket package available for \$14 if purchased by Tuesday, March 29.

"Founders Day is a very special time and I hope that many of our alumni will be able to join us as we celebrate and recognize a few of those people who have helped us make Morehead State University an outstanding institution," said Bill Redwine, Alumni Relations director.

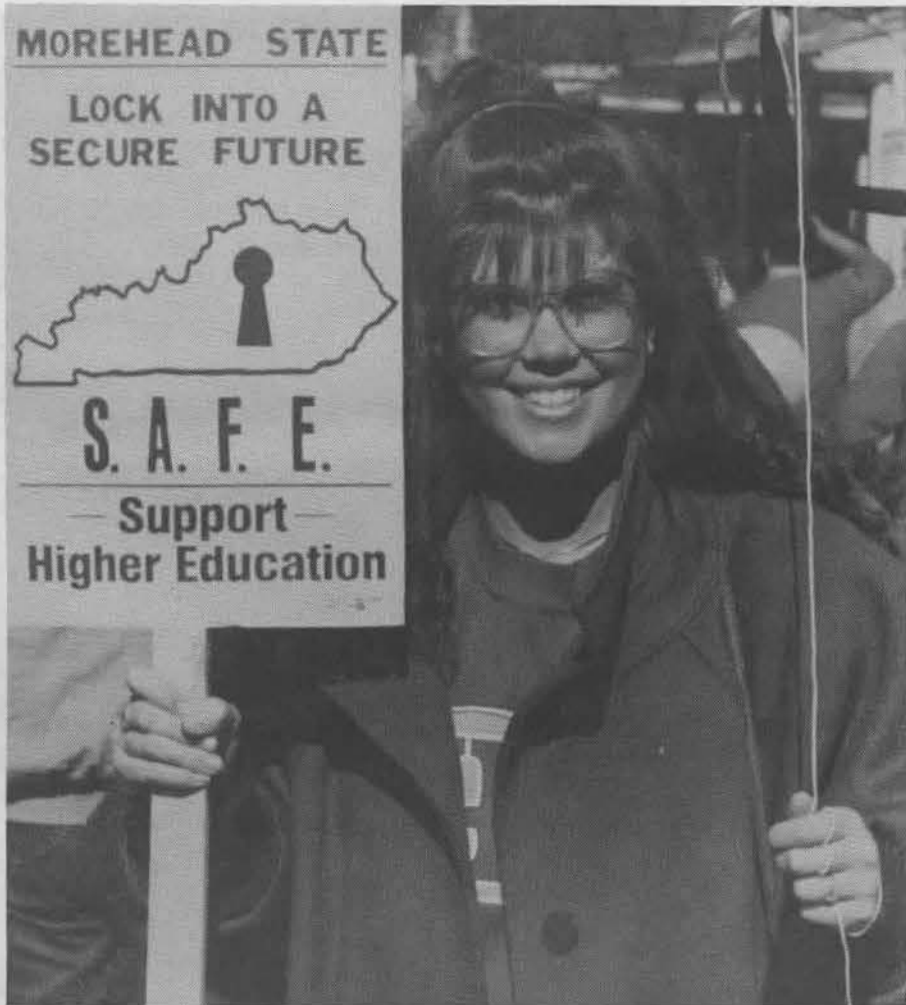
Linus Fair, retired Registrar, passes

Funeral services were conducted for Linus Fair, retired registrar at Morehead State University, on February 13.

A native of Centerton, Ark., Mr. Fair, who passed away on February 10, was also an emeritus professor of mathematics.

Memorial contributions are being accepted by the MSU Foundation, Inc.

Colleges statewide march/rally for higher education



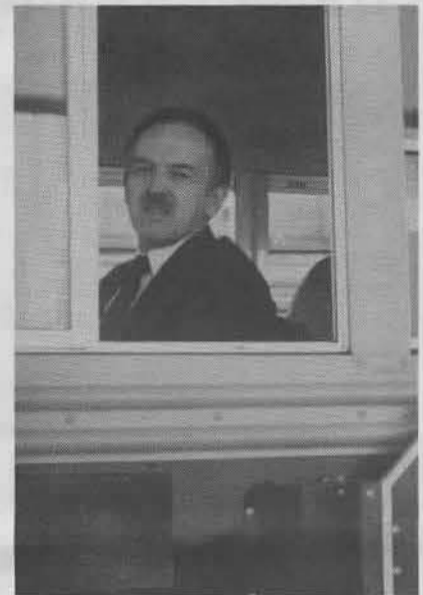
Weatherwise, the day for the march was as bright as the smile on the face of Sabrena Kiser of Morehead, an MSU student.



MSU President C. Nelson Grote joins others in the march for better days ahead for higher education.



MSU Student Government Association president, Steve Strathmann of Williamsburg, Ohio (right), talks with Gov. Wallace Wilkinson, who made an unexpected appearance at the rally.



MSU alumnus and Morehead Mayor Jack Roe drove a busload of students to the march/rally in Frankfort to demonstrate his support for higher education.



State Sen. Nelson Allen of Russell, an MSU alumnus, got together at the rally with the MSU Eagle mascot.



"Today, you walk in a cause that is just . . ." former MSU President A.D. Albright told the marchers.



Discussing the needs of higher education at a session with the legislators, a David Holton-led group of student leaders delivered a resolution to the legislative leaders calling for more money for the universities. Pictured here, to the left of Holton, a CHE member and an MSU alumnus, are: Rep. Don Blandford (D-14th), Speaker of the House; Rep. Greg Stumbo (D-95th); and Rep. Jody Richards (D-20th).

come travel with us

Yes, I would be interested to learn more about the travel abroad program being offered at Morehead State University.



Name _____

Address _____

City _____ state _____ zip _____

Phone _____

Check the country of your choice:

Austria England France Italy Spain

Please mail this information to:

Dr. Roger H. Jones
UPO Box 1305—MSU
Morehead, KY 40351-1689

Gifts and Grants

More than \$10,600 in institutional research grants were awarded to eight Morehead State University educators recently.

The latest awards bring the number of research and creative production proposals funded during the 1987-88 academic year to 12 for a total amount in excess of \$26,000 according to Dr. Stephen S. Taylor, MSU acting vice president for academic affairs.

Recipients of MSU Research Grants include:

Dr. Ted Pass, professor of biology, \$3,184 for a study entitled "An Evaluation of Hemodialysis Water Treatment Systems to Prevent Endotoxemia and Bacteremia in Dialysis Patients."

Dr. Glenn Peterson, assistant professor agriculture and natural resources, and **Dr. Donald Applegate**, Veterinary Technology program coordinator, \$2,785 for a study entitled "Evaluation of an Oral Escherichia Coli Bacterin-Vaccine in the Prevention of Edema Disease in Sheep."



Rudy

Dr. David R. Rudy, professor and chair of the Department of Sociology, Social Work and Corrections, \$1,548 for a study

entitled "Adult Children of Alcoholics."

Dr. C. Brent Rogers, assistant professor of agriculture, \$2,000 for a project entitled "Evaluation of Herbicide Safeners on Forage Grass Species."

Calvin O. Lindell, instructor of speech, and **Tom E. Scott**, assistant professor of speech, \$525 for a study entitled "Individual Differences in Sensation Seeking and Its Relationship to Drug Use."



Russell

Dr. Barbara Russell, assistant professor of education, \$570 for a study entitled "Acquisition of Communicative Competence Among LD Children and Adolescents."

Other grants

MSU Office of Extended Campus Programs, \$28,164, from Tenco Private Industry Council, to fund the pharmacy technician training program and the nursing assistant-health aide program.

MSU Office of University Relations, \$6,650, from the Cooperative School of Christian Mission, to fund the Cooperative School of Christian Mission Conference and provide meals, housing, and instructional space for 130 participants.

MSU Office of University Relations, \$22,020, from the American Legion of Kentucky, to fund meals, housing, and meeting space for 300 participants in Boys State 1988.

MSU gets \$23,830 co-op ed. grant

Dr. Michael Hopper, director of career planning and placement at Morehead State University, has been awarded a \$23,830 cooperative education supplemental grant by the U.S. Department of Education to develop a working relationship with employers within and beyond MSU's service region.

"It is important that students obtain practical experience before accepting any job," Dr. Hopper said. "If we can give students this experience while they are still in school, then it's to their advantage."

The cooperative education program enables students to work in their field, receiving hands-on training while getting paid and receiving credit toward their degree.

Three inducted in MSU Athletic Hall of Fame

Three former Morehead State University athletic greats were inducted into the university's Athletic Hall of Fame in ceremonies on the campus recently.

The newest inductees of the Athletic Hall of Fame, which was initiated in 1985, included the late Debra Ames Coppin, Marshall Banks, and W.D. "Cap" Scroggin. Their enshrinement raised the number to 23 members who have now been taken into the university's Athletic Hall of Fame.

The late Debra Ames, who was inducted posthumously, was one of the university's outstanding Lady Eagle basketball and volleyball athletes. She earned four letters in the two sports from 1974 through 1978 and was the first athlete to be awarded an athletic scholarship in women's volleyball. Twice, Mrs. Coppin (Ames), a native of Xenia, Ohio, was named the most valuable player on the Lady Eagles' basketball team. She established Lady Eagle records in basketball for season's scoring average, season field goal percentage and most rebounds in one game, and was selected to the

Kentucky Women's Intercollegiate Conference All-State team.

Mrs. Coppin, who is survived by her husband, Richard R. Coppin, and a son, Randy, passed in 1985. Her Hall of Fame award was accepted by John T. Ames, Sr., an uncle.

Banks, a 1962 MSU graduate, was one of the university's great track and field athletes and the first black athlete to compete in the Ohio Valley Conference. He established numerous MSU track and field records enroute to being recognized as one of the top athletes in OVC annals.

Banks, whose MSU track and field jersey was retired, earned both the master's and doctorate degrees from the University of Illinois, and is currently chairman of the department of physical education and recreation at Howard (D.C.) University. In 1981, he was also inducted as a member of the MSU Alumni Association Hall of Fame.

His presentation to the Hall was done by a former teammate and MSU grad, James "Jim" Scobee, '62, of Cincinnati.

Scroggin, who now resides in Youngstown, Fla., was a starting tackle on Eagle football teams in 1925 and 1926, and a pitcher on the 1926 baseball team. Following a coaching stint at Olive Hill High School from 1928-33, he returned to MSU in 1933 as the college's first freshman team coach in football and basketball.

A member of the first "M" Club at Morehead State, Scroggin was recognized for his ability to recruit outstanding athletes for the very successful Eagles' football team in the '30s. He was presented by Custer B. Reynolds of Wilmore, Ky., a 1943 MSU graduate. Too ill to attend the Hall of Fame ceremonies, Scroggin's award was accepted by his son, Dick Scroggin.

1988 Homecoming
October 7-8-9
MSU vs. Murray State
Kickoff 1:30 p.m.



ATHLETIC HALL OF FAME INDUCTEES—Following their induction into the MSU Athletic Hall of Fame, the former athletic greats were presented to the audience during the halftime of the MSU-Eastern Kentucky basketball game. Pictured here, from left, are: Dick Scroggin, U.S. Rep. Carl C. (Chris) Perkins, John T. Ames, Sr., MSU President C. Nelson Grote, Steve Hamilton, the university's athletic director, and Marshall Banks.

MSU hosts 7th District Summit



MSU President C. Nelson Grote discusses progress of the sessions with U.S. Rep. Carl C. (Chris) Perkins, left.

Nearly 250 business, educational, civic, and political leaders, together with other concerned citizens, from 23 Eastern Kentucky counties attended the Seventh District Summit on the Morehead State University campus recently.

Eastern Kentucky must place a value on education and raise the level of expectation of its people, if it wants to have a brighter future . . . was the message emanated from the day-long Summit designed to chart new directions for the 23 counties comprising the seventh congressional district.

U.S. Rep. Carl C. (Chris) Perkins (KY-7th), in his keynote address to the Summit participants, "The flame of education, which burns within all of us, must be stoked every so often and that is what we are going to attempt to do . . . with this educational initiative."

Reminding them that Eastern Kentucky faced "many unique problems and challenges," Perkins said, "Many of these problems have been with us for decades, and alone we are not going to change much. But, as a group, in a joint effort based on a similar dream I know we all share, we have an unlimited amount of ability



A panel of Kentucky leaders shared concerns for the region's future with those in attendance at the session. The panel included, from left: Dr. John Brock; Roger Recktenwald of Prestonsburg, executive director of the Big Sandy Area Development District; Pike County Judge-Executive Paul Patton; Dr. Jack Foster, Secretary of Education and Humanities; Robert Matthews, Kentucky Appalachia Foundation board member; and Dr. Gary Cox, executive director of the Council on Higher Education.



Sid Stewart, Judge-Executive of Morgan County, stresses a point in his remarks before the Summit audience.



Airing their concerns during the Summit were, from left: Kenny Bland, Rowan County Schools superintendent; Dr. John Brock, state superintendent of public instruction; and Dr. Jack Foster, Education and Humanities Cabinet secretary.

that we either allow to continue untapped, or we can channel it toward an overall goal of improvement. We have the potential to become a significant asset rather than an unwelcome burden on the system," Perkins added.

Some of the specific priorities/concerns raised during the discussions of the day included the issues of dropout prevention, getting parental involvement, and creation of jobs.



Sen. Woody May (West Liberty), Rep. Gene Cline (Olive Hill), and Rep. Walter Blevins (Morehead) at the Summit, discussing "where do we go from here?"

Reps from 12 states interviewing for teaching vacancies

Representatives from 40 school districts in 12 states will be on the Morehead State University campus Wednesday, April 6, to interview alumni and current students for teaching positions through the Kentucky Teachers Network.

The interviews will be held in Button drill room from 2 to 8 p.m.

Interview sign-ups will begin on Tuesday, March 1, in MSU's Office of Career Planning and Placement, located in Allie Young Hall 321. For those unable to visit the office, the process may be completed by telephone.

Scheduled to participate in the Kentucky Teachers Network are representatives from Florida, Georgia, Indiana, Maryland, Nevada, North Carolina, Ohio, South Carolina, Tennessee, Virginia, West Virginia, and Kentucky.

Registration and additional information on the types of positions to be filled is available by calling MSU's Office of Career Planning and Placement, (606) 783-2233.

Your Family Tradition Continues at Morehead State University

We now offer a program for the children of MSU alumni who enroll as new students. For information on this Alumni Grant program, please call the Office of Alumni Relations on our toll-free lines:

1-800-262-7474 (Ky.)

1-800-354-2090 (out-of-state)

Please do not delay, call us today!

If the line is busy, our regular number is (606) 783-2080.

Alumni Today

Alumni Association Seeks Nominations

The Alumni Association is seeking nominations to fill 10 vacancies on its executive council, which meets four times a year. Each term on the council runs for two years, from July 1988 to July 1990. If you are interested in serving on the council, or wish

to nominate someone, please fill out the form below and return it to: MSU Alumni Association, Morehead State University, Alumni Center, Morehead, KY 40351, Attention: Nomination Committee.

MSU Alumni Association Nomination Form

Name _____ Class year _____

Address _____
city state zip code

Current position _____

Name of Nominee _____ Class year _____

Please include a cover letter stating why you, or the person you nominate, should be considered as a candidate. The deadline for nominations is April 1.

Wedding Watch

Margaret A. LeMaster, Portsmouth, Ohio, and **Craig A. Crabtree (86)**, Lucasville, Ohio.
 Janet L. Wray, Springboro, Ohio, and **Kevin V. McIntyre (84)**, Ft. Mitchell, Ky.
Mary S. Dyke (80), Louisville, Ky., and Richard C. Crum, Lebanon, Ky.
 Terri J. Smith, Ashland, Ky., and **Donald W. Neal (82)**, Ashland, Ky.
 Lisa G. Ginn, Vanceburg, Ky., and **Robert I. Kennard (83)**, Vanceburg, Ky.
Doreen J. Unger (84), Dallas, Tex., and Gary Gunn, Dallas, Tex.
Ellen K. Gevedon (86), Frankfort, Ky., and **Gregory S. Motley (87)**, Ezel, Ky.
 Cheryl L. Nolen, Grahn, Ky., and **Samuel R. Duvall (87)**, Flatwoods, Ky.
 Judith A. Bruner, Cynthiana, Ky., and **James A. Letcher (69)**, Carlisle, Ky.
 Kimberly Tipton, Ashland, Ky., and **C. Christopher Adkins (87)**, Ashland, Ky.
Stephanie M. Sexton (83), Thornton, Ky., and **Terry L. Bentley (73)**, Neon, Ky.
Angela L. Carey (85), Ironton, Ohio, and William J. Birch, Lexington, Ky.

Glennis G. Martin (75), Carrollton, Ky., and Dave Marye, Louisville, Ky.
Retha L. Lowe (84), Olive Hill, Ky., and **Carroll R. Pursel (87)**, Georgetown, Ky.
Kathy A. Van Deventer (81), Sanborn, N.Y., and **Howard Chandler, Jr. (81)**, Olive Hill, Ky.
 Mari M. Catlett, Mt. Sterling, Ky., and **Rick J. Amburgey (78)**, Mt. Sterling, Ky.
 Diana Stefan, Kokomo, Ind., and **James N. Payne (84)**, Morehead, Ky.
 Debra R. Hayden, Vienna, Ohio, and **Lonnie R. Morris (87)**, Liberty, Ky.
Alisa M. Donta (87), Catlettsburg, Ky., and **Christopher C. Stewart (85)**, Franklin, Ohio.
Ladonna Soles (86), Mt. Sterling, Ky., and Scottie Jones, Ft. Myers, Fla.
Janelda R. Gresham (82), Grayson, Ky., and C. Ronald Mitchell, Okeechobee, Fla.
 Lynise O. Beatty, Lexington, Ky., and **Eric L. Jackson (84)**, Lexington, Ky.
Lesli K. Lee (87), Mt. Sterling, Ky., and **Douglas B. Petrie (87)**, Lancaster, Ohio.

1950's

Charles Apel (52), an analytical chemist at Los Alamos National Scientific Laboratories in New Mexico, recently returned to MSU as a guest lecturer for the Department of Physical Sciences. Apel is the son of Grace Apel of Morehead.

Dr. N. Peggy Burke (56) of Colfax, Ky., was chosen as one of two hundred Americans for the American/Soviet peace walk from Leningrad to Moscow, that was held June 15, through July 8, 1987. She now resides in Coralville, Iowa.

Russ Spaulding (57) of Mason, Ohio, has retired after 30 years in education and 14 years as superintendent of the Mason Schools. He will go into business for himself teaching private bagpipe lessons, giving workshops, conducting summer schools of piping, and publishing music books. He has developed a system for writing bagpipe music with the Apple Macintosh computer and is writing a book. The name of his company is "Bagpipes Unlimited."

Stephen S. Pratt (76), county supervisor in the Hazard field office, just completed his 10th year of service with the federal government. Serving as the president of the Kentucky Association of County Supervisors in 1984, he was elected in 1987 at the national convention in Portland, Maine, as president of the National Association of County Supervisors, an organization of over 1,300 members. Pratt resides in Carrie, Ky., with his wife, **Lorena (76)**, a special education teacher, and their five children.



Bailey

F. Louis Bailey (73), a recent graduate of Life Chiropractic College in Marietta, Ga., has now completed both parts of the national board. He will be taking the Kentucky State Board and returning to his home residence of Greenup (Ky.) to begin practice.

Thomas Ray Riffe (78) was recently awarded the 1987-88 Teacher of the Year award by the Grayson Chamber of Commerce. He is a special education teacher at Star Elementary School.

Randall Kent Sampson, Jr. (71) is an internal auditor for the Harlan National Bank (Harro Bank Shares, Inc.). He resides with his wife, **Louise (71)**, a registered nurse, in Harlan, Ky.

Michael D. Mayhew (71) is director of education and training for the Piedmont region of the South Carolina Department of Mental Retardation. His wife, **Beverly Schlichter Mayhew (73)** is a learning disabilities specialist for the Charleston County (S.C.) Board of Education. They reside in Mt. Pleasant, S.C.



Holbrook

Paul Holbrook (78), has been hired as a cooperative education job developer with the Office of Career Planning and Placement at Morehead State University. He will visit prospective employers in the area, serve as a liaison with MSU's faculty and administrators, inform students about the program and assist in the process of securing employment for them.

1960's

Don Polly (61), superintendent of the Muscatatuck State Developmental Center in Jennings, Ind., received a "Sagamore of the Wabash" award at a meeting of superintendents of the 11 mental institutions in the state. This award was in recognition of Polly's work with Medicaid certification for the center.

Harry C. Mayhew (62), of the department of educational support services at MSU, will have a biography in the 1988 edition of "Who's Who in American Education," published by the National Reference Press. He was selected for the publication because of his professional and educational accomplishments and for his recognized leadership within the educational community.

M. Glenn Williams (64) has assumed duties, as of January 1, as the Rowan County (Ky.) Circuit Court Clerk.

1970's

Aleson L. Lake (74), of Corvallis, Ore., is a graduate student at Oregon State University in computer science, and serves as a research assistant for the dean of the College of Sciences at OSU.

Charlene Bradley Scott (71) received her master's degree from the University of Dayton recently. She is presently teaching first grade reading at Mt. Orab Elementary School in Ohio.

Alumni Today

Alumni Association Seeks Nominations

The Alumni Association is seeking nominations to fill 10 vacancies on its executive council, which meets four times a year. Each term on the council runs for two years, from July 1988 to July 1990. If you are interested in serving on the council, or wish

to nominate someone, please fill out the form below and return it to: MSU Alumni Association, Morehead State University, Alumni Center, Morehead, KY 40351, Attention: Nomination Committee.

MSU Alumni Association Nomination Form

Name _____ Class year _____

Address _____
city state zip code

Current position _____

Name of Nominee _____ Class year _____

Please include a cover letter stating why you, or the person you nominate, should be considered as a candidate. The deadline for nominations is April 1.

Wedding Watch

Margaret A. LeMaster, Portsmouth, Ohio, and **Craig A. Crabtree (86)**, Lucasville, Ohio.
 Janet L. Wray, Springboro, Ohio, and **Kevin V. McIntyre (84)**, Ft. Mitchell, Ky.
Mary S. Dyke (80), Louisville, Ky., and Richard C. Crum, Lebanon, Ky.
 Terri J. Smith, Ashland, Ky., and **Donald W. Neal (82)**, Ashland, Ky.
 Lisa G. Ginn, Vanceburg, Ky., and **Robert I. Kennard (83)**, Vanceburg, Ky.
Doreen J. Unger (84), Dallas, Tex., and Gary Gunn, Dallas, Tex.
Ellen K. Gevedon (86), Frankfort, Ky., and **Gregory S. Motley (87)**, Ezel, Ky.
 Cheryl L. Nolen, Grahn, Ky., and **Samuel R. Duvall (87)**, Flatwoods, Ky.
 Judith A. Brunner, Cynthiana, Ky., and **James A. Letcher (69)**, Carlisle, Ky.
 Kimberly Tipton, Ashland, Ky., and **C. Christopher Adkins (87)**, Ashland, Ky.
Stephanie M. Sexton (83), Thornton, Ky., and **Terry L. Bentley (73)**, Neon, Ky.
Angela L. Carey (85), Ironton, Ohio, and William J. Birch, Lexington, Ky.

Glennis G. Martin (75), Carrollton, Ky., and Dave Marye, Louisville, Ky.
Retha L. Lowe (84), Olive Hill, Ky., and **Carroll R. Pursel (87)**, Georgetown, Ky.
Kathy A. Van Deventer (81), Sanborn, N.Y., and **Howard Chandler, Jr. (81)**, Olive Hill, Ky.
 Mari M. Catlett, Mt. Sterling, Ky., and **Rick J. Amburgey (78)**, Mt. Sterling, Ky.
 Diana Stefan, Kokomo, Ind., and **James N. Payne (84)**, Morehead, Ky.
 Debra R. Hayden, Vienna, Ohio, and **Lonnie R. Morris (87)**, Liberty, Ky.
Alisa M. Donta (87), Catlettsburg, Ky., and **Christopher C. Stewart (85)**, Franklin, Ohio.
Ladonna Soles (86), Mt. Sterling, Ky., and Scottie Jones, Ft. Myers, Fla.
Janelda R. Gresham (82), Grayson, Ky., and C. Ronald Mitchell, Okeechobee, Fla.
 Lynise O. Beatty, Lexington, Ky., and **Eric L. Jackson (84)**, Lexington, Ky.
Lesli K. Lee (87), Mt. Sterling, Ky., and **Douglas B. Petrie (87)**, Lancaster, Ohio.

1950's

Charles Apel (52), an analytical chemist at Los Alamos National Scientific Laboratories in New Mexico, recently returned to MSU as a guest lecturer for the Department of Physical Sciences. Apel is the son of Grace Apel of Morehead.

Dr. N. Peggy Burke (56) of Colfax, Ky., was chosen as one of two hundred Americans for the American/Soviet peace walk from Leningrad to Moscow, that was held June 15, through July 8, 1987. She now resides in Coralville, Iowa.

Russ Spaulding (57) of Mason, Ohio, has retired after 30 years in education and 14 years as superintendent of the Mason Schools. He will go into business for himself teaching private bagpipe lessons, giving workshops, conducting summer schools of piping, and publishing music books. He has developed a system for writing bagpipe music with the Apple Macintosh computer and is writing a book. The name of his company is "Bagpipes Unlimited."

Stephen S. Pratt (76), county supervisor in the Hazard field office, just completed his 10th year of service with the federal government. Serving as the president of the Kentucky Association of County Supervisors in 1984, he was elected in 1987 at the national convention in Portland, Maine, as president of the National Association of County Supervisors, an organization of over 1,300 members. Pratt resides in Carrie, Ky., with his wife, **Lorena (76)**, a special education teacher, and their five children.



Bailey

F. Louis Bailey (73), a recent graduate of Life Chiropractic College in Marietta, Ga., has now completed both parts of the national board. He will be taking the Kentucky State Board and returning to his home residence of Greenup (Ky.) to begin practice.

Thomas Ray Riffe (78) was recently awarded the 1987-88 Teacher of the Year award by the Grayson Chamber of Commerce. He is a special education teacher at Star Elementary School.

Randall Kent Sampson, Jr. (71) is an internal auditor for the Harlan National Bank (Harro Bank Shares, Inc.). He resides with his wife, **Louise (71)**, a registered nurse, in Harlan, Ky.

Michael D. Mayhew (71) is director of education and training for the Piedmont region of the South Carolina Department of Mental Retardation. His wife, **Beverly Schlichter Mayhew (73)** is a learning disabilities specialist for the Charleston County (S.C.) Board of Education. They reside in Mt. Pleasant, S.C.



Holbrook

Paul Holbrook (78), has been hired as a cooperative education job developer with the Office of Career Planning and Placement at Morehead State University. He will visit prospective employers in the area, serve as a liaison with MSU's faculty and administrators, inform students about the program and assist in the process of securing employment for them.

1960's

Don Polly (61), superintendent of the Muscatatuck State Developmental Center in Jennings, Ind., received a "Sagamore of the Wabash" award at a meeting of superintendents of the 11 mental institutions in the state. This award was in recognition of Polly's work with Medicaid certification for the center.

Harry C. Mayhew (62), of the department of educational support services at MSU, will have a biography in the 1988 edition of "Who's Who in American Education," published by the National Reference Press. He was selected for the publication because of his professional and educational accomplishments and for his recognized leadership within the educational community.

M. Glenn Williams (64) has assumed duties, as of January 1, as the Rowan County (Ky.) Circuit Court Clerk.

1970's

Aleson L. Lake (74), of Corvallis, Ore., is a graduate student at Oregon State University in computer science, and serves as a research assistant for the dean of the College of Sciences at OSU.

Charlene Bradley Scott (71) received her master's degree from the University of Dayton recently. She is presently teaching first grade reading at Mt. Orab Elementary School in Ohio.

1980's

James R. Rudd (84) has been transferred to Lexington by Southern States Cooperative, as a retail support and accounting specialist for the eastern half of Kentucky.

Kimberly Bowen Spatola (86) is the computer operator for an international insurance company in New York City.

Cathy McMurtry Conti (84) is a registered nurse at Clermont Mercy Hospital in Ohio where she is specializing in medical-surgical. Her husband, **Chuck (82)**, just accepted a new position as chief physical therapist with an orthopedic surgeon in Montgomery, Ohio.

Stephanie Raglin (84) has completed her master's degree in higher education with a specialization in college student personnel at Southern Illinois University at Carbondale. She has taken a position at the University of Tennessee as a residence hall director.

Carlton W. Hughes (86) has completed a master of arts degree in communication arts at Marshall University. He is now communications instructor and T.V. production supervisor at Southern West Virginia Community College in Logan, W.Va.

Vivian Harris Wright (81) is the promotion operations manager for WSOC-TV, the ABC affiliate in Charlotte, N.C.

Robert James Yost (87) is a fish technician with the Kentucky Department of Fish & Wildlife at Minor E. Clark Fish Hatchery. He and his wife, **Patricia (78)**, reside in Morehead.

Melissa Katherine Browning (85) has recently been employed by the Upjohn Pharmaceutical Company as a sales representative. She lives in Zanesville, Ohio.



Burge

Jan Gwynette Burge (82), has been working as the coordinator of conference services at MSU since June 1986. As the coordinator, she is responsible for promoting, scheduling, and coordinating the use of university facilities by external groups and organizations.

Curtis Smith (85), airman first class, has graduated from the Air Force basic training at Lackland AFB, Tex. He is a resident of Greenup.

Cheryl Lynn Saunders (86), has recently completed a training program in life insurance and is currently a life insurance underwriter for State Farm Life Insurance Company in the Newark, Ohio regional office.

Carolyn Sue Horn (87) of Grayson has been named director of the evening college at Lindsey Wilson College in Columbia. She will oversee the evening college at the main campus, and for programs located in Shepherdsville, Glasgow and Danville, where the total enrollment is approximately 400 students.

Kenneth R. Imhoff (83) of Ross, Oh. is working as a product manager for Steelcraft Manufacturing Company in Cincinnati. His wife, **Kelly (82)**, is employed as a registered nurse at the Good Samaritan Hospital.

April D. Scarlott (84) is employed by Rhodes, Inc., a web-offset printing company in Charlestown, Ind.

Gregg R. Petcoff (83) is the head assistant coach for the Cobb (Ga.) Stingrays swim team. Previously, the Marietta, Ga. resident served as head coach of the Druid Hills Golf Club's swim team.

Jennifer Saylor Howard (83) is a home economics agent in Magoffin County. Her husband, **Jack L. (74)**, is a health and mathematics teacher at Magoffin High School.

Douglas C. Christman (84) is the minister of music and youth at the Ft. Branch General Baptist Church at Ft. Branch, Ind.



Wellman

Wellman named to Lt. Governor's staff

Maj. Gen. Billy Wellman, who served 10 years as Kentucky's adjutant general, has been named executive officer for internal affairs on the staff of Lt. Gov. Brereton Jones.

An alumnus of Morehead State University, Gen. Wellman succeeded Jack Hall in February. In addition to having served as the state's adjutant general for a decade, Wellman did triple duty from September 1982 to December 1983, when he also served as justice secretary and state police commissioner under then-Governor John Y. Brown, Jr.

"There are very few people who have served the Commonwealth with the dedication and distinction of Gen. Billy Wellman," Jones said, upon announcing the appointment.

A native of Ashland, and a member of the MSU Alumni Hall of Fame, Wellman was appointed by three governors as Kentucky's top military official, completing the longest tenure in the state's history. Under his leadership, the Kentucky National Guard doubled in manpower and added more than a dozen local units.

What's New with You?

MOREHEAD STATEment welcomes updates on family additions, job changes, relocations, promotions—whatever you think is newsworthy. Help us keep track of you by filling out this form and returning it. Recent newspaper clippings and photos also are appreciated.

Name _____ class year _____

Your home town _____

Spouse's full name _____ class year _____

Spouse's home town _____

Children _____

Current address-street _____

City _____ state _____ zip _____

News item _____

Telephone number where we can call for verification or additional information _____

(Send to MOREHEAD STATEment, Alumni Center, Morehead, KY 40351-1689.)

MSU Directory questionnaires to be mailed

Work on the MSU Alumni Directory is well underway. Soon, all alumni will receive a brief questionnaire, with a followup request scheduled to be sent one month later. The prompt return of these questionnaires is essential so that the information in the directory will be current and complete.

Alumni will then be contacted directly by the Harris Publishing Company to verify information to be listed in the directory and to see whether they wish to purchase a copy of the directory.

Alumni with current addresses who have not responded to the questionnaire, and are not reached by telephone by the Harris representatives, will appear in the directory with the information provided by alumni records.

Watch for your questionnaire and be sure to return it promptly!

MOREHEAD STATEment is published bimonthly by Morehead State University in cooperation with the MSU Alumni Association, Inc., and is intended for alumni and other friends of the university. The opinions expressed on these pages do not necessarily reflect the official policies of the university or those of the Alumni Association. All graduates, former students, and other friends of the university are eligible for membership in the MSU Alumni Association, Inc., through gifts to the university for any purpose.

Please mail all correspondence to MOREHEAD STATEment, Alumni Center, MSU, Morehead, KY 40351. Articles may be reprinted without permission. MSU is an equal opportunity educational institution.

Publisher	Keith Kappes
Editor	Bill Redwine
Managing Editor	John Holley
Contributing Editors	Judy Yancy
	Tami B. Jones
	Joyce LeMaster
	Randy Stacy
	Pauline Young
Graphic Designer	Cindy Gray
Photographer	Ray Bradley

Commentary

Something to build on

By all accounts, the Seventh District summit meeting at Morehead State University was a resounding success. Attending was a broad-base representation of political, civic and business leaders from all 23 counties in the eastern Kentucky congressional district.

However, it is much too early to determine the long-range success of the all-day meeting. What, if any, impact the session will have on the future of this region will depend on what future actions occur as a direct or indirect result of it.

The summit was a beginning. It succeeded in getting people from diverse backgrounds together for a common goal. It identified some regional problems, but there was little time to discuss possible solutions. The session offered something to build on, but to build something truly meaningful from it will require continued leadership, determination and cooperation.

It is not difficult to identify some of the major problems facing this region—many of which can only be solved by the people who live here, and not by outsiders. We must reduce our high school dropout rate, which is among the highest in the nation; we must encourage more adults who lack a high school diploma to earn their GED certificates; we must end the political infighting that often separates groups into warring factions and blocks a regional approach to common problems; we must end the pollution of our streams and hillsides by garbage thoughtlessly tossed out by our neighbors; we must end the fraud that allows some officials to buy their way into office.

The list could go on, but you get the point. We have a multitude of problems, but few that cannot be solved with a determined and unified effort. We hope Saturday's session is the start of such an effort.

We realize that other groups, both private and public, also are involved in taking a regional approach to solving long-standing problems. Saturday's session should not be seen as competition for those efforts, but as another thrust in a united effort to improve the quality of life in this region. As the only four-year public university in the region, Morehead State is in a unique position to serve as a unifying force. We must not let any effort at a regional approach degenerate and ultimately be destroyed by the type of factionalism that has divided this region for decades.

The next step should be to create an organization from those gathered at the meeting and form committees that can attack specific problem areas. We have an excellent start. Together, let's build on it.

—Courtesy *The Daily Independent*, Ashland, KY, February 12, 1988.

Office of Alumni Relations
Morehead State University
Alumni Center
Morehead, KY 40351

Non-Profit Organization
U.S. Postage
PAID
Morehead, Ky.
Permit Number 55

ADDRESS CORRECTION REQUESTED

Carrie C. Back
440 Forest Hills Drive
Morehead, KY 40351

Parents: If this issue is addressed to your son or daughter who no longer maintains a permanent address at your home, kindly notify the Alumni Office of the new address.

MOREHEAD STATE^{ment.}

Vol.11 No.5

March-April 1988



Nancie Battaglia

MSU's First Olympian

Brian Shimer (85), a member of the U.S. Olympic bobsledding team, competed in the 1988 Winter Olympic Games at Calgary.

For alumni and other friends of Morehead State University