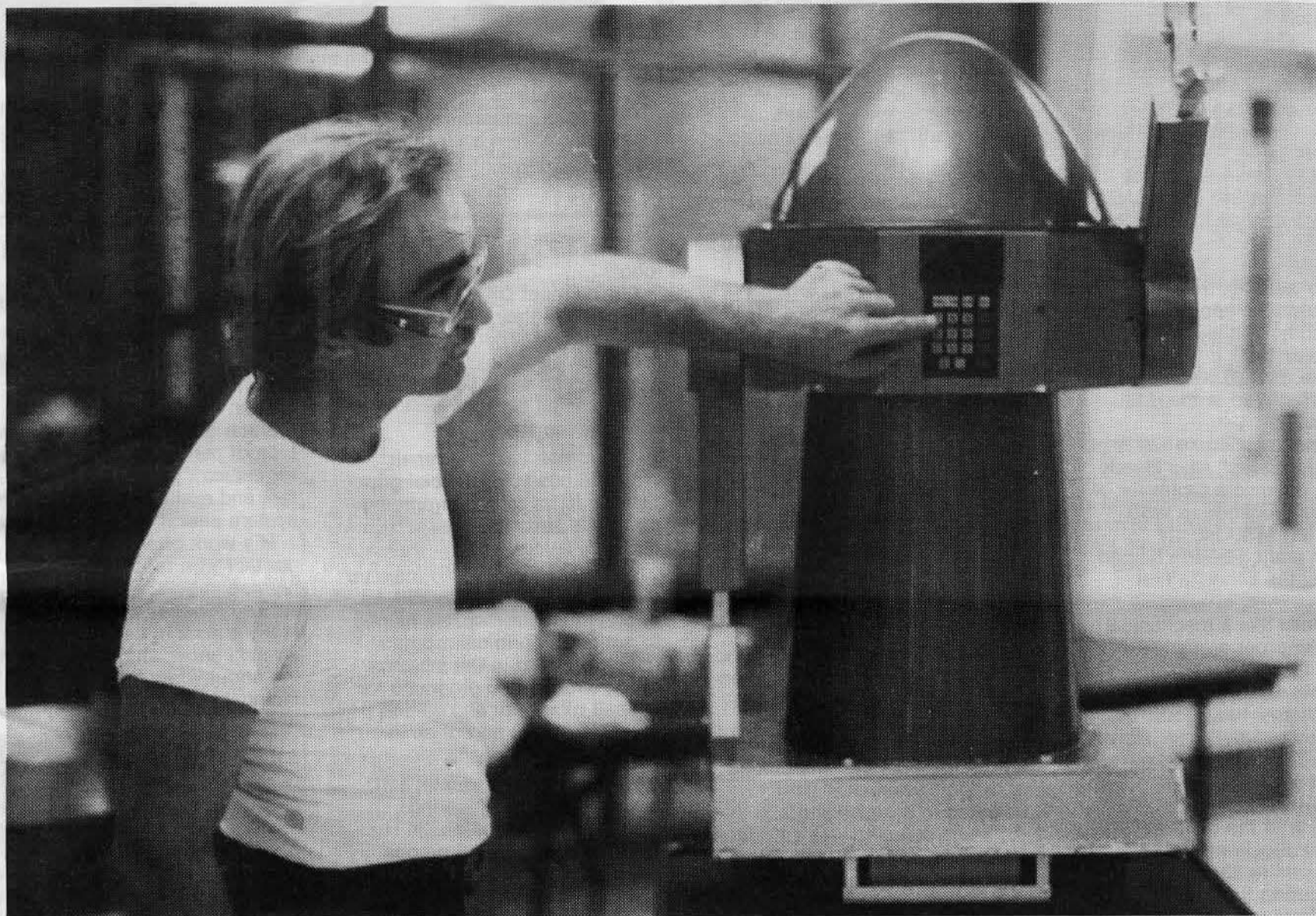


# MOREHEAD STATEMENT

Vol. 7, No. 1

People, Programs and Progress at Morehead State University

July 1983



ROBOT OPERATOR — Edward C. Hays, Morehead senior, gives instructions to "Yo Yo" the android during a Robotics Education Workshop this summer at MSU. More than 35 educators from Kentucky and states as far away as California explored such topics as artificial intelligence, voice synthesis and androids.

## MSU out front in robotics education

By FANNIE and ALVIN  
MADDEN-GRIDER  
Class of 1983

It is a long trip from Eastern Kentucky to Beverly Hills, Calif. But for Barbara Emmons, that distance was shortened by a robotics course she took at Morehead State University.

Emmons, a Fleming County native, graduated from MSU in 1982 with degrees in industrial and welding technologies. She was hired as an associate engineer in manufacturing for Lockheed International because of her knowledge of robotics.

"One of Lockheed's main goals is to automate the welding departments, and I was the only applicant with both robotics and

welding experience," she says.

Her robotics experience consisted of only one class, but because the field is so new and there are so few people with even a basic understanding of robotics, Emmons is helping decide what kind of robots Lockheed will buy. Later, she will be involved with implementing and programming the robots, as well as deciding what tasks they will perform.

The robotics course she took in the spring of 1982 was MSU's first — and the first offered in Kentucky. She describes it as "a most basic course, designed to let you know what's going on in the field."

Thirty of the top students in data processing, drafting,

welding, electronics and machine tools were invited to take that first class. In addition to studying theory, the students helped build a pick-and-place robot and a welding robot. Now, a year later, five of them are working in jobs directly involved with robotics.

"Robotics is the future," says Dr. Robert Newton, head of MSU's Department of Industrial Education. "Robots will replace the unskilled worker. That guy working on the assembly line and putting on five lugnuts has been laid off. His job will be taken over by robots. We're going to need massive retraining."

Robots are displacing — not replacing — people, Dr. Newton adds, comparing the new

automation to the U.S. farm situations several decades ago.

"When we stopped using mules and so forth, it quickly reduced the number of people needed for food production, but at the same time it increased the need for people to produce tractors and other farm machinery."

So, Dr. Newton explains, while the need for unskilled workers is diminishing, the need for workers with a knowledge of robotics and automation is growing faster than the supply.

"It is very important that we produce people who are going to be competitive in the job market, not only the year they graduate,

See MSU ROBOTICS  
page two

# MSU robotics

Continued from page one

but their entire worklife," he says.

"In training people for these careers, it is critical for us to be aware of what's happening and the changes taking place, then try to outguess the demand."

Robotics automation means a higher rate of productivity, lower costs, and consequently, higher profits. Absenteeism in America averages 22 percent, whereas robots have a 95 percent up-time. And the cost to operate a robot is around five dollars an hour, much less than union wages.

"Robots don't get tired, they don't get disgruntled, they don't go on strike," says Dr. Newton. "They just work hour after hour after hour."

Currently, there are about 5,000 robots in use in the U.S. with 25 percent of them in the automobile industry.

While the No. 1 task for robots is welding, they also paint, assemble appliances and make candy, textiles and drugs. By the year 1990, it is estimated that more than 20,000 robots will be manufactured in the U.S. each year.

"The need for education is going to be greater," says Meade Roberts, associate professor of industrial education at MSU. With a 1981 MSU faculty research grant, Roberts helped construct the school's first robot, a pick-and-place unit which looks like a mechanical arm sticking out of a small fire hydrant.

"Robots will relieve people of the hot, heavy, hazardous, dirty, dangerous and dull jobs," says Roberts. "The kind of jobs people don't want are the kind that are ideal for a robot."

Because of the need for robotics education, MSU has been upgrading the robotics offerings during the last year. This spring, there was an industrial robotics course for outstanding

applied sciences students and a special problems course in which students did independent research and built a robot. In addition, some students with institutional work-study jobs have been helping with the research.

Richard Jinbo, assistant professor of industrial education, teaches "Industrial Robotics," a course for juniors and seniors. He says the course covers not only the design and development of robots, but the sociological and business impact of robots' arrival in American industries.

Of the predicted replacement of unskilled workers by robots, Jinbo says companies and schools will have to retrain laborers.

"People don't realize that the job they have may be obsolete in five years," Jinbo adds. "Like I tell my students, 'Don't quit learning.'"

In the past two years, MSU students and faculty have built four robots: a welding robot, an assembly robot, a pick-and-place robot and an android named "Yo Yo." In addition, they bought one pick-and-place microbot.

"Yo Yo," unlike the robots, can move about independently. "Yo Yo" appears to be a relative of "Star Wars" robot "R2-D2" and is used primarily to promote MSU's robotics program at high schools and professional conferences.

In February, MSU's Department of Industrial Education and Technology was selected to conduct a robotics workshop at "Southcon '83," an electronics and high technology conference in Atlanta, Ga. Four institutions from the Eastern U.S. participated in the workshop.

"Being selected was an honor for us," says Dr. Newton, adding that MSU is the only university in Kentucky and one of fewer than 50 schools in the country teaching robotics.

"We got into it early, and we're getting ahead of most schools now," he says. "We're doing more with robotics than most universities."

MSU also has been working with area companies involved in automation and robotics. Rockwell International in Winchester, which installed Kentucky's first industrial robot in 1968, has given MSU students resource information and the chance to see robots at work. Detroit Reamer and Tool (DRT) Marketing, the Michigan-based parent company of Owingsville Industries in Owingsville, Ky., has provided extensive industrial-technical literature, electrical-mechanical equipment, videotapes and technical support from its engineering staff.

The relationship between MSU and DRT paid off for MSU student Doug Rigsby who took the robotics course in the spring of 1982. Rigsby is now one of two employees with robotics knowledge at DRT's Detroit, Mich., plant, where automation



KEYED UP — Teresa Campbell, MSU senior from Hazard, feeds a robotic arm instructions through a computer keyboard. Campbell has received nine hours of MSU credit in robotics training aimed at preparing students for designing, constructing and using industrial robots.

systems are built for Japanese robots.

Rigsby met DRT representatives while they were on campus last year. "That's how I got my job as electronics serviceman," he says, adding that he spends all his time with robots these days.

In addition to doing repair work, he has built special gripper hands for robots, programmed robots and coordinated machine layout.

While at MSU, Rigsby majored in industrial technology with an option in electronics. He helped to set up the original robotics course, worked in the lab on a robot, wrote some programs for a small robot arm and helped build a robot as part of an independent project.

Another MSU graduate, Jeff Lavalley, is an engineering technician at Cilco, Inc., in Huntington, W. Va. Like Emmons and Rigsby, he graduated in the spring of 1982 after taking one robotics course and soon had a job.

"At the first interview, they

mentioned they might automate their plant," Lavalley recalls. "From then on, we mostly talked about robots."

The only employee at Cilco with a robotics background, he is setting up an automation system for the company's production of intraocular lenses, a type of permanent contact lens for cataract patients. He also will test and evaluate the automated system after it is in operation.

His work often puts him in contact with robotics sales representatives.

"The robotics course I had really comes in handy then," he says. "I know what they are talking about when they say interfacing, something I had no idea of before."

Jeff's younger brother, Joel, is following in his footsteps. This May, he finished his degree in electronics technology, completing the requirements for the four-year program in just two and a half years. Much of that time was spent in the robotics lab, as Joel received nine semester hours credit in robotics.

## New plan for newsletter

Effective with this issue, MSU's external newsletter for non-alumni friends, MOREHEAD STATEMENT, is being merged with CONTACT, the former alumni newsletter, to create one publication.

"Our objective is to provide our alumni with a larger, more comprehensive publication which will be distributed six times a year instead of four times as with the old CONTACT," said Don Young, executive secretary-treasurer of the MSU Alumni Association. "We also will be able to publish more personal material about individual alumni and keep everyone better informed about campus developments and the programs of the Alumni Association."

He added that the new version of MOREHEAD STATEMENT has staff members from the University's alumni, news services, publications, sports information

and development offices and, for the first time, a student has a key role. Joe Adams, a senior journalism major from Morehead and a two-time editor of The Trail Blazer, will be the assistant managing editor and will be responsible for student-related information.

The publication schedule consists of July, September, November, January, March and May. Editorial offices are maintained at the Alumni Center.

"We have improved the quality of paper and added several features in hopes of making the publication more attractive and more functional to our readers," said Keith Kappes, STATEMENT's executive editor and MSU's director of alumni, development and public affairs. "We welcome comments on the publication and will publish guest articles whenever appropriate."

## MOREHEAD STATEMENT

MOREHEAD STATEMENT is published bi-monthly by the Morehead State University Division of Alumni, Development and Public Affairs in cooperation with the MSU Alumni Association, Inc. and is intended for alumni and other friends of the University. The opinions expressed on these pages do not necessarily reflect the official policies of the University or those of the Alumni Association. All graduates, including persons completing pre-professional programs, are eligible for active membership in the MSU Alumni Association, Inc., through gifts to the Alumni Fund.

Please mail all correspondence to MOREHEAD STATEMENT, Alumni Center, MSU, Morehead, KY 40351. Articles may be reprinted without permission. MSU is an Equal Opportunity Educational Institution.

Executive Editor	Keith Kappes
Managing Editor	Don Young
Assistant Managing Editor	
Editor	Joe Adams
Contributing Editors	Sharon Crouch-Farmer
	Bill Redwine
Sports Editor	Craig Bohnert
Editorial Assistant	Pauline Davis

# Job Corps 'school' staffed by MSU

More than 150 young people are getting a second chance at an education and a vocation through the efforts of the U.S. Forest Service and Morehead State University.

The Frenchburg Job Corps Program, located at the Frenchburg Civilian Conservation Center, has high goals.

Seven instructors, employed by MSU with federal funds, teach such basic courses as math, reading and writing, as well as driver education, health and career guidance. A librarian / clerk also is on hand.

"Our objective is to take unemployed and unemployable youth, 16 to 22 years of age, and provide them with basic skills instruction for completion of a high school equivalency certificate," explains George Eyster, MSU's director of continuing education and project coordinator. "This is complemented by a vocational skills program supervised by Forest Service personnel."

All participants live on the site and attend classes from 8 a.m. until 3 p.m. each weekday. Evenings and weekends are spent in recreational activities or work, such as helping build picnic facilities at Cave Run Lake.

"The University's recreational and library facilities are frequently used," Eyster adds, "and we often bus the students to the MSU campus for concerts and lectures."

MSU also provides GED testing for participants.

As the organizational arm of the program, the Job Corps recruits and selects students, provides instructional materials and equipment, training facilities, and travel expenses and wages for students engaged in the training.

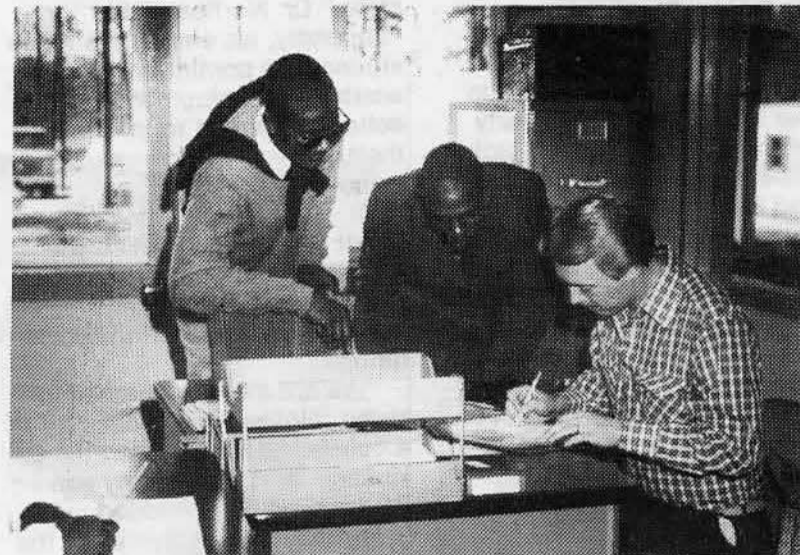
"The Job Corps offers at least eight different areas of vocational training, such as business education, construction and food services," Eyster said.

Students recruited for the program, may remain for a maximum of two years and may

leave the Center with a high school diploma and training in a vocation.

The success of the program, however, depends on the youth.

"We have already had three former participants in the program enroll as freshmen in college," Eyster remarked. "I hope that is an omen for the future."



HELPING HANDS — Charles Conn of Morehead reviews a class assignment for two students at the Frenchburg Job Corps Center. The MSU alumnus is among seven teachers engaged in teaching basic skills to 150 disadvantaged Jobs Corpsmen under MSU's contract with the U.S. Forest Service.

## New computer degree offered

MSU has a new degree program to prepare students for jobs developing computer software and working with research scientists.

The bachelor's degree in mathematics and computer programming was established because "there was a gap in our computer science offerings," says Dr. Glenn Johnston, head of MSU's Department of Mathematical Sciences.

"For years we have had programs in business data processing and electronic engineering, which is the building of computers," Dr. Johnston explained. "But we didn't have a degree in computer science, the third aspect of computer education."

Structured to prepare students for jobs with research scientists and computer manufacturers, the program consists of 30 semester hours of mathematics and 24 hours of data processing.

Graduates will be qualified for positions such as systems analysts in the computer field.

An unusual career possibility for a graduate of this program is cryptography — using computers to make or break codes. Also, jobs are available with defense contractors and manufacturers, according to Dr. Johnston.

"Actually," Dr. Johnston added, "any firm interested in manufacturing new kinds of things or in looking for ways of getting more out of energy would be a possible employer of our graduates."

Approximately one-third of all jobs now involve computers, and it is estimated that the figure will rise to 80 percent by 1990, according to Dr. Johnston.

## CAMPUS CALENDAR

For more information, call numbers listed below. (Area code 606)

For information on having a conference or workshop on the MSU campus, please call Office of Campus Events at 606-783-2010.

AUGUST	17	OCTOBER	14
22-25 Fall registration, 8 a.m. 783-2002	Parents Weekend 783-2070	1 Kentucky Logging Show 783-2010	*MSU Theatre: "The Miser" Button, 8 p.m. 783-2170
21 President's Reception for new students and parents, ADUC, 2 p.m. 783-2070	*Football vs. Marshall Jayne, 2:30 p.m. 783-2088	2 Kentucky Logging Show 783-2010	*Alumni Membership Reception Holiday Inn, 5:30 p.m. 783-2080
29 Last day to register. 783-2008	18 Parents Weekend 783-2070	5 Exelbirt Lecture: Robert Boyle, "Acid Rain" Button, 10:20 a.m. 783-2031	*Candlelight Awards Dinner ADUC, 6:30 p.m. 783-2080
SEPTEMBER	20 Lecture Series: David Reiss, "Inside M.A.S.H." Button, 10:20 a.m. 783-2031	6 *Arts In Morehead Series: Riverboat Ragtime Review Button, 8 p.m. 783-2808	*Homecoming Dance ADUC, 9 p.m. 783-2080
5 Labor Day Holiday (No classes or office hours)	24 *Football vs. Middle Tenn. Jayne Stadium, 1:30 p.m. 783-2088	8 *Football vs. Austin Peay Jayne Stadium, 1:30 p.m. 783-2088	15 Lettermen's Breakfast ADUC, 8 a.m. 783-2080
12 *Arts In Morehead Series: "One Potato, Two" Button, 8 p.m. 783-2808	30 Kentucky Logging Show 783-2010	13 *Homecoming Concert AAC, 8 p.m. 783-2080	Class Reunions ('33, '43, '53) ADUC, noon. 783-2080
16 Parents Weekend 783-2070			*Homecoming Game Football vs. Akron Jayne, 2:30 p.m. 783-2080
			*Postgame Dance Perkins Center, 9 p.m. 783-2080

**Note to Alumni:** If the staff of the Alumni Association can assist you in arranging a visit to the campus, please do not hesitate to call 783-2080.

\*Ticket or invitation required

### FACILITY CODE:

AAC — Academic-Athletic Center  
ADUC — Adron Doran University Center  
Button — Button Auditorium  
Jayne — Jayne Stadium

# President's Leadership Club formed

"It was time to stop talking and start doing."

Thus was born the "President's Leadership Club" at Morehead State University, an organization for high school seniors with superior academic records and other personal qualifications.

MSU President Morris L. Norfleet began putting the group together last fall and now nearly 50 students from two dozen high schools are involved.

"I had been saying for a couple of years that something should be done about the fact that a majority of the high school graduates in Eastern Kentucky are not going to college or into some other post-secondary training," Dr. Norfleet recalled. "Finally, I decided to get involved on a personal basis and the President's Leadership Club is the result."

Aided and encouraged by high school principals, guidance counselors and school superintendents, Dr. Norfleet has hosted the high school students at various campus events and for two day-long leadership seminars.

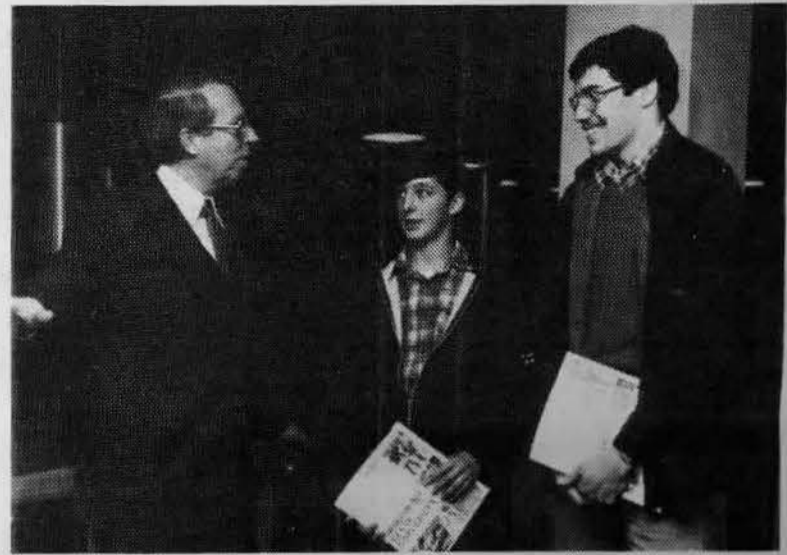
"Our first objective is to recognize academic excellence by demonstrating to these outstanding students that their classroom achievements are important to them and their families and to the future of our state," Dr. Norfleet said. "Secondly, we encourage these students to continue their academic development at the college level and to influence their classmates to make the same decision."

Dr. Norfleet said the program is not designed to entice the students to enroll at MSU but that he makes sure that they are familiar with the institution's offerings.

"We are more concerned about reinforcing the concept of a college education than the advantage of attending any particular school," he added.

Not all of the activities of the President's Leadership Club are tied to academics. Through the assistance of Chi Omega sorority, Dr. Norfleet also hosts the students for social functions.

"It is important that prospective college students have a sense of the campus at-



CAMPUS VISITORS — Danny Glover, center, and Jeff Henson, right, of West Carter High School talked with Morehead State University President Morris L. Norfleet during a President's Leadership Club seminar. The organization is sponsored by President Norfleet.

mosphere and an opportunity to have personal contact with faculty members and college students," Dr. Norfleet added.

He noted that several MSU faculty members are involved in small group sessions with the high school visitors. MSU student leaders and other students are also included.

Establishment of the President's Leadership Club has at-

tracted little fanfare to this point, but Dr. Norfleet hopes to increase the visibility of the participants, especially in their hometowns.

"We are proud of these superior students and we know they can be a positive influence on the students back home," he stated. "We are anxious to help them tell their story."



## Your boss may be more generous than you think.

You could be working for one more than 600 matching gift companies in the United States. If so, you can double the value of your contribution to Morehead State University. When you send in a contribution, your matching give company will match your gift by contributing the same amount to MSU. With your company's help, you'll be doubling the value of your gift!

Check with your benefits or personnel office and find out if you can double your contribution to MSU through a matching gift program. Or use the coupon at right to return your contribution, and we'll tell you how you might be able to double the value of your gift.

Morehead State University  
Office of Development  
UPO Box 1000  
Morehead, KY 40351

Enclosed is my gift of \$\_\_\_\_\_ to the MSU Foundation, Inc., for \_\_\_\_\_

I work for \_\_\_\_\_  
Please let me know if my employer is a matching gift company, and how I can double my contribution through this program.

Name \_\_\_\_\_

Address \_\_\_\_\_

City \_\_\_\_\_

State \_\_\_\_\_ Zip \_\_\_\_\_

Federal tax laws allow a tax deduction for gifts to educational institutions.

If you designate a portion of your gift to the Alumni Fund, you become an active member of the Alumni Association.

## Martiki project grows

A big project became even bigger when a railroad recently announced it would join MSU and a coal company in a three-way venture to promote an agricultural development research project in Martin County, Kentucky.

MSU's partners in the project are Martiki Coal Corp., a subsidiary of MAPCO, Inc., and Pocahontas Kentucky Corp., a subsidiary of Norfolk Southern Corp., the railroad holding company. The project is aimed at the future when coal would cease to be the major industry in Eastern Kentucky.

MSU President Morris L. Norfleet described the project as "a fine example of what can be done when organizations with the will and resources form a partnership for the common good. This represents one of the largest endeavors of its kind involving a regional university and two corporations in the U.S."

He said the program would involve the development of beef, swine and poultry industries conducted on lands reclaimed after surface mining. The first phase of the 15-year program is an operation covering 250 acres. Eventually, 4,000 acres of gently rolling flat land will be created and made available, he said.

Pocahontas Kentucky and Martiki Coal, which leases its coal land from Pocahontas, are providing more than \$500,000 as well as the use of land. MSU is

managing the project.

U.S. Rep. Carl D. Perkins, D-Ky., says that it could become a model for the productive use of reclaimed mine lands which will ultimately create jobs in Eastern Kentucky.

"It will become a learning laboratory for students and for any other interests concerned about the future of land resources of Eastern Kentucky created by mountaintop surface mining of coal," Rep. Perkins said.

President Norfleet also indicated that the project's master plan includes commercial egg production, swine facilities, beef and sheep herds, row crops and various other agronomy and horticulture projects. A byproduct of poultry and swine facilities will be manure to improve and stabilize the land.

Robert M. Duncan, vice chairman of the MSU Board of Regents and president of the Inez Deposit Bank in Martin County, said the joint venture was a plus for the Martin County area and the University. "It gives MSU a chance to be of great service to the region and will help point the direction for future development of surface mined lands so that the land will remain productive."

## CAI makes debut at MSU

There's a new teacher at MSU these days, quite unlike other teachers. It teaches library science now but will soon begin to teach classes in math, science, word processing, literature, English and other fields.

It's a computer terminal, located on the fourth floor of Camden-Carroll Library.

Faye Belcher, associate director of libraries, says the terminal will provide access to a computer which, in turn, will help students learn how to use the library in a beginning class entitled "The Use of Books, Materials and Libraries."

Of course, a real teacher will be in charge of the class, and the computer will be a helper. Computer-assisted instruction (CAI), as it's called, enables teachers to serve more students than otherwise possible.

Here's how it works: Students attend classes as usual. Then, in their free time, they will answer questions the instructor has entered into the computer through the terminal. The computer will check the answers and keep a record of each student's progress.

Although the computer is being used for only one class now, the students can use the terminal to access existing programs stored in the University's main computer. The majority of these students are data processing majors, Belcher says.

Mike Gresham, systems manager of MSU's Computing Center, says the long-term plans

are for an additional 20 terminals in a general user area in the library.

Currently, more than 300 data processing students, as well as information sciences, math and other students, use the computers at the computing center. Gresham says the additional terminals will "effectively double our user capacity."

"We've had requests from every academic area on campus for computer-assisted instruction," says Gresham, adding that instructors are encouraged to write their own programs.

Some people have the misconception that CAI is an "easy way out of teaching" Gresham comments.

"But to write a program for one lecture may take a whole semester, so it's not that easy."

The computer terminal at the library, and the new program, were made possible by a federal grant.

### Allen is senior

In terms of length of service to MSU, Assistant Athletic Director John E. (Sonny) Allen is the senior member of the faculty. He was appointed in 1954 and today holds the rank of assistant professor of HPER.

Among the full-time faculty, the senior person is Lake Cooper, associate professor of mathematics, who was appointed in 1956.

Both are MSU alumni.

## GREAT ADVANCEMENTS IN HISTORY

### 1905



*Albert Einstein, then an unknown examiner at the Swiss patent office in Bern, stunned the scientific world by advancing his theory of relativity.*

$$E=mc^2$$

*Energy equals mass times the velocity of light squared*

### 1983



*Just 79 years later, Bill Phelps, by his small but relatively significant \$25 membership gift to the MSU Alumni Fund helped advance the following theory.*

$$mc=E^2$$

*Many contributions equals excellence squared*



**MOREHEAD STATE UNIVERSITY**  
ALUMNI ASSOCIATION, INC.

Send this form and your check to:  
MSU Alumni Association  
Alumni Center  
Morehead, KY 40351

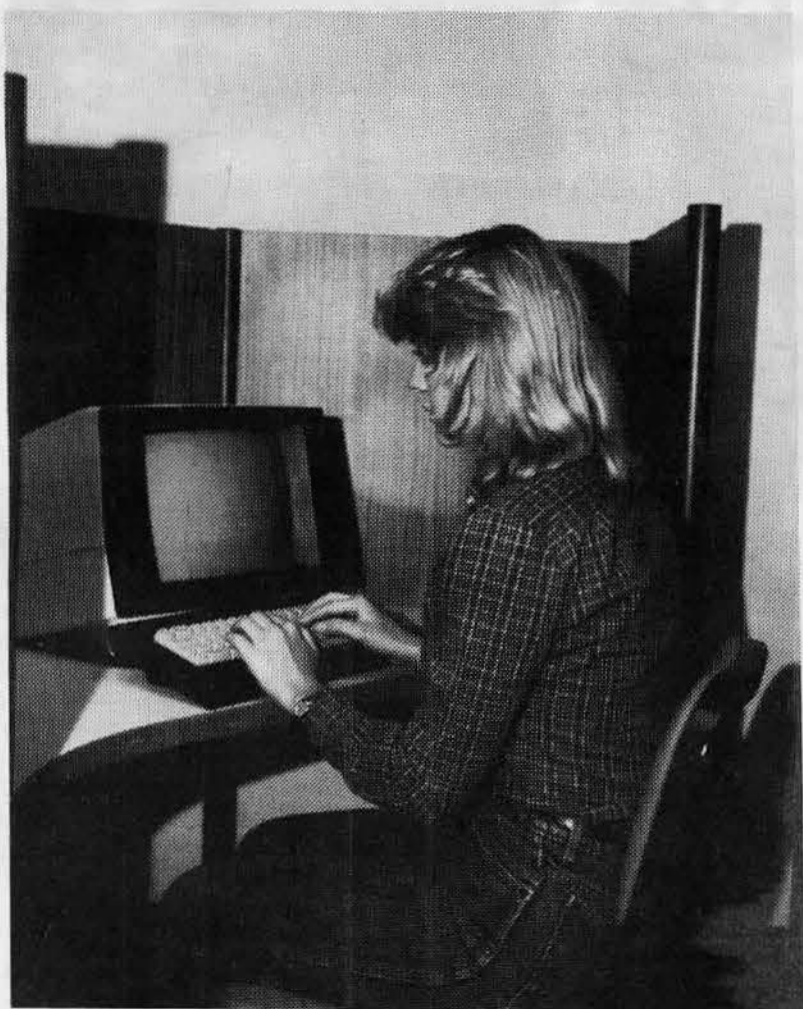
Here is my gift in support of the Alumni Association:

Name \_\_\_\_\_ Class Year \_\_\_\_\_

Address \_\_\_\_\_

City \_\_\_\_\_ State \_\_\_\_\_ Zip \_\_\_\_\_

Make checks payable to the Alumni Fund.



COMPUTER USER — Ann Morgan, Churchill, Tenn., junior, takes advantage of MSU's computer-assisted instruction, using a computer terminal on the fourth floor of the Camden-Carroll Library.

# Eagles had 3 trips to NCAA in '82-83

"See the USA through the NCAA" might well have been the motto for Morehead State University's athletic teams in 1982-83 as the Eagles recorded the most successful sports year in MSU's history.

Three teams represented MSU in national tournaments conducted by the NCAA as the Eagles carried the Blue and Gold to Hartford, Conn., for men's basketball under Coach Wayne Martin, to Pomona, Calif., for women's tennis under Coach Beverly Mayhew, and to Ann Arbor, Mich., for baseball under Coach Steve Hamilton.

In addition, the Eagles won championships in the Ohio Valley Conference and the state of Kentucky and had individual athletes selected for All-OVC and All-America honors. Also, Coach Hamilton was named the OVC's "Coach of the Year" in baseball. Beverly Mayhew was picked as the OVC's "Coach of the Year" in women's tennis.

Alison Hill in women's tennis and Martha Rust in women's volleyball received coveted OVC "Scholar-Athlete" awards.

By sport, the 1982-83 scorecard included:

**FOOTBALL** — Record improved to 5-6. Wide receiver Mark Ledford and punter John Christopher named All-OVC. Christopher won All-America honors for the second straight year. He was signed by the Cincinnati Bengals of the NFL.

**WOMEN'S VOLLEYBALL** — Finished second in OVC with 38-22 record. Martha Rust and Becky Peterson named All-OVC.

**WOMEN'S SOCCER** — Won state title with 13-1 record.

**MEN'S SOCCER** — Finished with 8-7 record.

**MEN'S CROSS COUNTRY** — Finished fourth in OVC and won invitational meets at Berea and Asbury.

**WOMEN'S CROSS COUNTRY** — Finished fifth in OVC.

**WOMEN'S BASKETBALL** — Finished second in OVC with 16-14 record. Priscilla Blackford named OVC "Player of the Year" and OVC "Female Athlete of the Year." Janice Towles selected for All-OVC frosh.

**MEN'S BASKETBALL** — Tied school record for victories with 19-11 record. Won OVC tournament after second-place finish in regular season. First NCAA appearance in 22 years. Earl Harrison and Guy Minnifield named to second team All-OVC.

**WOMEN'S SWIMMING** — Finished fourth in state tournament.

**MEN'S SWIMMING** — Finished third in state tournament.

**WOMEN'S SOFTBALL** — Finished with 17-9 record.

**MEN'S GOLF** — Finished third in OVC. Mike Shafer named All-OVC.

**MEN'S TENNIS** — Finished third in OVC. Paul Hope won singles title and named All-OVC.

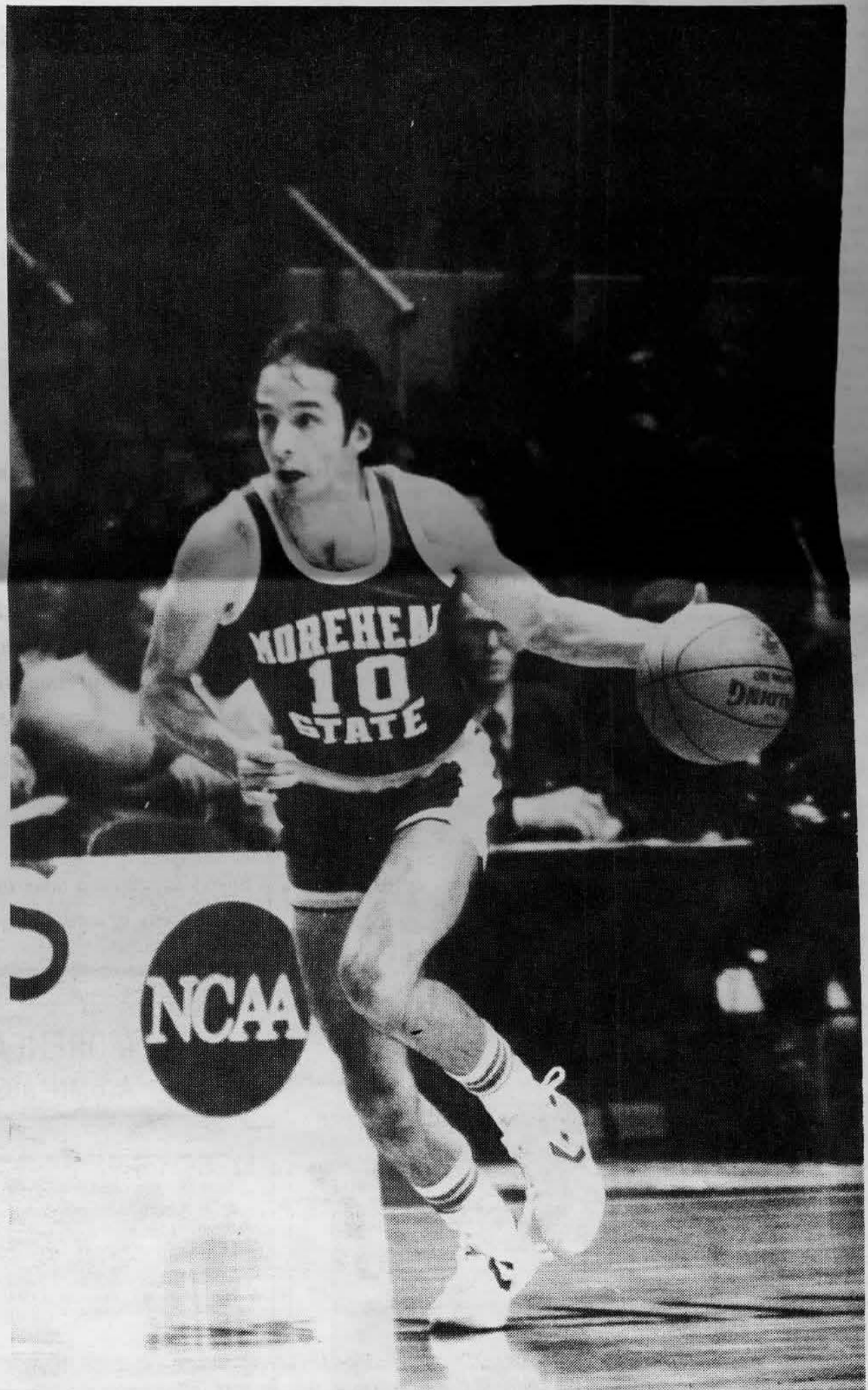
**WOMEN'S TENNIS** — Won

OVC as Helen Curtis and Alison Hill each captured singles titles and Hill and Sally Anne Birch won in doubles. Helen Haddon and Pam Reeves joined other three on All-OVC team. Represented MSU in NCAA ten-

nis for the first time.

**BASEBALL** — Finished with 27-18-1 record, including OVC divisional and league titles and second place in NCAA Mideast Regional. Second baseman Steve Heatherly named OVC

Northern Division "Player of the Year." Second NCAA appearance since 1977. School record for season victories. Heatherly, Joe Mitchell, Shawn Johnson, Alan Steele, and Rob Williams on All-Tourney squad.



**ON THE MOVE** — Senior co-captain Rocky Adkins brought the ball downcourt as the men's basketball Eagles traveled to Hartford, Conn., to meet Syracuse in the NCAA tournament. The game was carried nationally on ESPN Television and worldwide on Armed Forces Radio.

# Len Miller Room dedicated

Nearly three years of effort culminated in the 1982-83 basketball season, when the Len Miller Room was dedicated at MSU's Academic-Athletic Center.

Miller, who died in 1945, served on MSU's football and basketball coaching staffs for nine years, including a wartime stint as head coach in basketball.

The drive to honor the memory of the Lexington native was launched officially in 1980 by a group of MSU alumni and other supporters. Homer Bickers of Lexington was chairman of the Len Miller Memorial Fund Committee which has raised funds to finance a sculptured bust of Miller and to establish a scholarship fund.

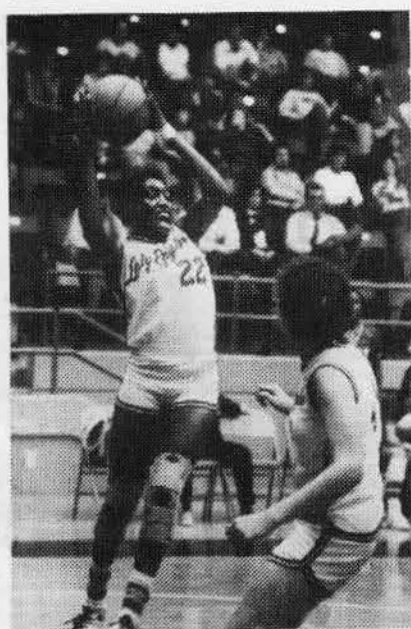
"Our committee's goal is to aid deserving young leaders of the future by perpetuating the memory of Coach Miller, a highly respected coach, teacher, counselor and a man of compassion for others," said Bickers.

He said the committee will continue to solicit and accept gifts to the Len Miller Memorial Fund to build a permanent base of support for the scholarships to be awarded in his name. Gifts are received by the MSU Foundation, Inc., UPO Box 1000, Morehead, KY 40351.

Other members of the com-

mittee are Dr. Harold Holbrook, Elmer Anderson, Lorene Day, Theresa Caudill, Walter Carr, Harold Bellamy and Wallace

Fannin, all of Morehead; J. Phil Smith and Ralph Holbrook of Jackson; Ray Kring of Frankfort; and Mel Otten of Florence.



**BEST IN OVC** — Junior forward Priscilla Blackford of the Lady Eagles basketball squad was selected as the "Female Athlete of the Year" in the Ohio Valley Conference. She also was picked as the top women's cager in the league.

## 3 grads help MSUF

Three prominent graduates of Morehead State University have been appointed this year to key positions on the Board of Trustees of the MSU Foundation.

Named to three-year terms as alumni at-large members were James P. Pruitt, Jr., of Pikeville and James A. Finch of Mayslick. Pruitt, immediate past president of the Alumni Association, is an attorney. Finch is active in the management of his family's agricultural, banking and broadcasting interests in the Maysville area.

James D. (Dan) Lacy of Russell, manager of public relations for Ashland Oil, Inc., was elected vice president of the Foundation, succeeding Billy Joe Hall of Mt. Sterling, who resigned from the board after being appointed to the Kentucky Council on Higher Education.

The 18-member Board of Trustees oversees the operation of the non-profit, tax-exempt foundation which was established in 1979 to receive and administer private gifts to MSU. Constituent members of the foundation include the Alumni Association, Eagle Athletic Fund, Parents Association and MSU Scholarship Committee.

## Six become emeriti

Six recently-retired MSU faculty members have been granted emeritus status by the Board of Regents.

They include Floy Patton, home economics; Dr. Noah Logan and John Stanley, education; Dr. Ruth Barnes, English; and Dr. Margaret Heaslip and Allen Lake, biology.

# M



**LEN MILLER MEMORIAL** — Officials of MSU and friends and relatives of the late Len Miller, a former coach at MSU, gathered late in the basketball season to unveil a memorial to Miller and to dedicate a facility named in his honor by the University. From left are Mrs. Dale Turpin, widow of the late coach; Michael Len Miller, son of the late coach; William Turpin; Dale Greer; Homer Bickers, chairman of the Len Miller Memorial Fund Committee; MSU President Morris L. Norfleet; J. Phil Smith, Mrs. Turpin's brother and a member of the committee; and Jerry Howell Sr., chairman of the MSU Board of Regents. The Len Miller Room is located in MSU's Academic-Athletic Center. Funds from the bronze bust were donated by alumni and other friends.

# Experience the Excitement of Eagle Football!

## 1983 Schedule

Date	Opponent	Time
Sept. 10	at Kentucky State	2:00
Sept. 17	MARSHALL (Parents Weekend)	2:30
Sept. 24	MIDDLE TENNESSEE	1:30
Oct. 1	at Murray State	8:30
Oct. 8	AUSTIN PEAY	1:30
Oct. 15	AKRON (Homecoming)	2:00
Oct. 22	at Tennessee Tech	2:30
Oct. 29	at Western Kentucky	2:00
Nov. 5	LIBERTY BAPTIST	1:30
Nov. 12	EASTERN KENTUCKY	1:30
Nov. 19	at Youngstown State	1:30

Home games in caps; all times Eastern.



**Family Plan**—The MSU Family Plan offers a \$50 savings for a family of five over individual game rates. Adults may buy two season tickets at \$20 each and may purchase up to three youth season tickets for only \$10 each. Make MSU football a family affair!

Season ticket orders will be filled first. Additional tickets will be made available for individual games after Aug. 25 and may not be next to season ticket seats. Please send payment by check or money order to Division of Athletics, Morehead State University, Morehead, KY 40351. Do not send cash. Tickets will be mailed as soon as possible. No phone orders can be accepted. The deadline for acceptance of season ticket orders is Aug. 25, 1983.

(Detach here and mail)

## Ticket Application

No. Tickets	Game	Date	Price	Amount
	SEASON—All home games—Adult		\$20.00	
	SEASON—Youth (with two adults)		10.00	
	MARSHALL (Parents Weekend)	2:30 Sept. 17	4.00	
	MIDDLE TENNESSEE	1:30 Sept. 24	4.00	
	AUSTIN PEAY	1:30 Oct. 8	4.00	
	AKRON (Homecoming)	2:00 Oct. 15	4.00	
	LIBERTY BAPTIST (Youth Day)	1:30 Nov. 5	4.00	
	EASTERN KENTUCKY	1:30 Nov. 12	4.00	
TOTAL AMOUNT ENCLOSED				\$

RETURN WITH CHECK TO:  
Division of Athletics  
Morehead State University  
UPO Box 698  
Morehead, KY 40351

(Ticket prices include sales tax)  
NO REFUNDS

Name \_\_\_\_\_

Address \_\_\_\_\_

# "It's Eagle Time!"

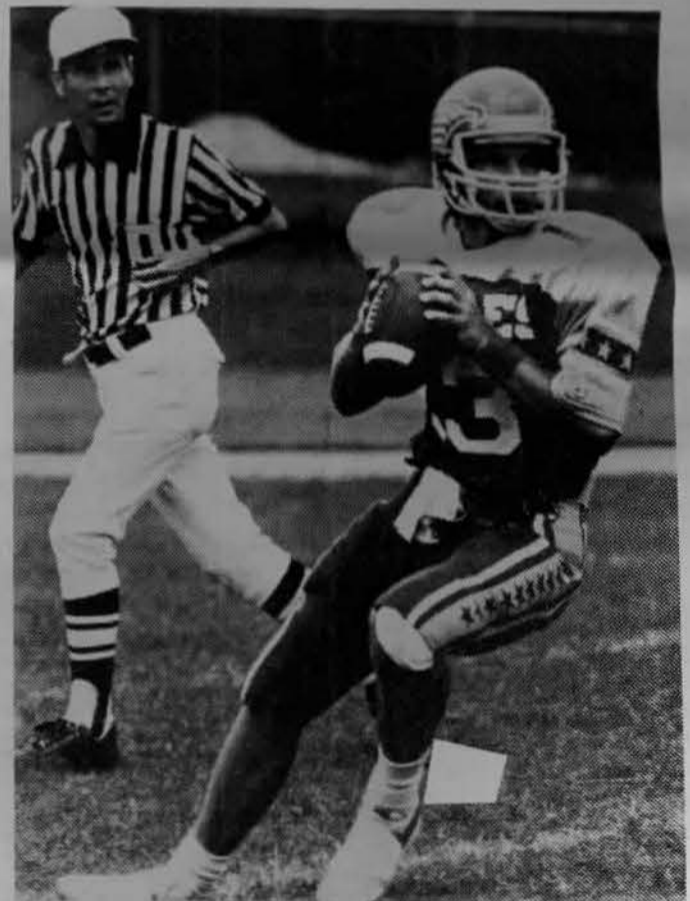
## HOMECOMING 1983



**Fun**



**Friends**



**Football**



**Fellowship**

### Oct. 13-15, 1983

#### Thursday, Oct. 13

Concert, AAC, 8:30 p.m.

#### Friday, Oct. 14

Membership Reception  
5:30 p.m., Holiday Inn  
Candlelight Dinner,  
ADUC, 6:30 p.m.  
(Awards at 8 p.m.)  
Homecoming Dance,  
Crager Room, 9 p.m.  
(Queen Coronation at 10 p.m.)

#### Saturday, Oct. 15

Alumni Coffee,  
Alumni Center, 9 a.m.  
Lettermen's Breakfast,  
ADUC, 9 a.m.  
Reunions of 33, 43, and 53  
ADUC, noon  
Football Game,  
Jayne Stadium 2 p.m.  
Post-game Dance,  
Perkins Center, 9 p.m.

Watch for ticket details in our next issue



# DELMARVA chartered

June 27 was an evening to remember.

Two U.S. senators, an ambassador, two governors and two university presidents, all from Kentucky, were assembled in the Russell Senate Office Building, along with about 40 graduates of Morehead State University.

Two hours later, history was made as MSU President Morris L. Norfleet issued the charter to MSU's DELMARVA alumni chapter, the first such organization to be formally recognized by the University.

DELMARVA (for Delaware, Maryland and Virginia) will be the regional alumni chapter for MSU graduates living in those three states and the District of Columbia.

Elaine Kibler, class of 1975, was elected president of the chapter. A resident of Temple Hills, Md., she is an admissions officer for Bowie State College in Bowie, Md.

Other officers include Carolyn Yehl (69) of Alexandria, Va., vice president; Patsy Martin Caudill (75) of Frederick, Md., secretary; B. Pat O'Rourke (66) of Arlington, Va., treasurer; and William H. Counts, program chairman.

Assisting the officers in contacting other MSU grads in the Washington area were Dr. Marshall Banks (62) of Howard

University, Dr. Peter Verhoven (64) of Reston, Va., Lawrence (Lot) Marzetti (39) and Edith Noe, both of Annapolis, Md., and John R. Hall (66) of Woodbridge, Va. Hall is vice president for alumni administration of the Council for Advancement and Support of Education (CASE), based in Washington. He also serves as second vice president of the MSU Alumni Association.

"This great event is the result of an outstanding volunteer effort by several individuals, especially Elaine Kibler and John Hall," President Norfleet said in the charter presentation. "We are hopeful that several more alumni chapters will be chartered in the coming year, both in Kentucky and other states."

In her acceptance remarks, Ms. Kibler challenged her fellow alumni to remain loyal to MSU and to find meaningful ways of assisting the University with their time, talents and money.

Also appearing on the program was MSU President Emeritus Adron Doran. Dr. Doran was accompanied by his wife, Mignon. Other special guests included Sen. Wendell Ford, a former governor; former Gov. Edward T. (Ned) Breathitt, now a railroad executive; former Sen. John Sherman Cooper, also a former ambassador; and Dr. Ted

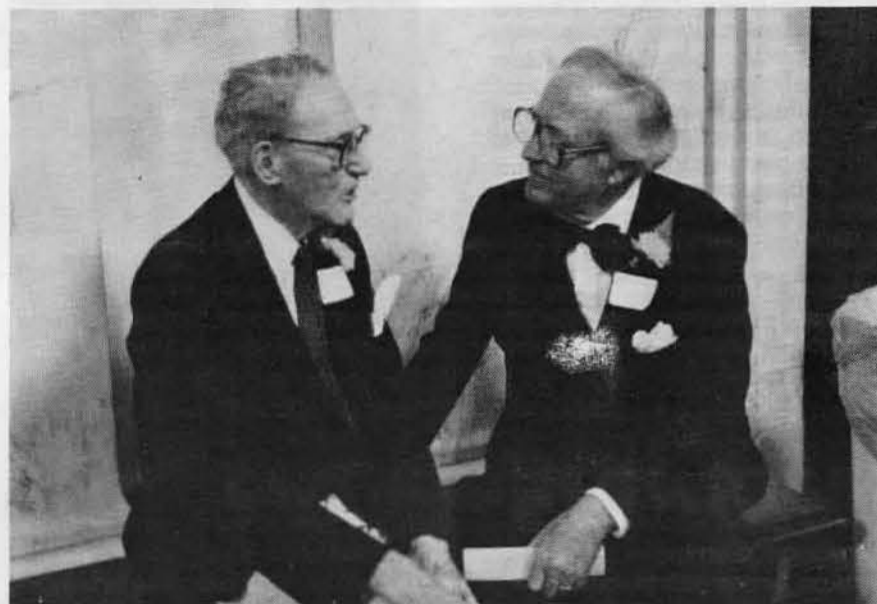
Crosthwait of Frankfort, a two-time alumni president.

Alumni Association President Merl Allen recently announced that plans are underway to organize chapters in Cincinnati, New York City and Florida, in addition to the Lexington, Louisville and Ashland areas in Kentucky. Graduates living in other areas who are interested in helping organize alumni chapters are invited to contact Don Young

at 606-783-2080.

MSU alumni living in Delaware, Maryland, Virginia and the District of Columbia are asked to contact President Kibler for more information about the DELMARVA chapter. Her address is:

Elaine Kibler  
5108 Durrand St.  
Temple Hills, MD 20748



OLD TIMES — President Emeritus Doran and former U.S. Sen. John Sherman Cooper recalled their long personal friendship. Mr. Cooper now practices law in Washington. Dr. and Mrs. Doran live in Louisville.



MADAM PRESIDENT — Chapter President Elaine Kibler accepts the post. Looking on are fellow officers B. Pat O'Rourke, Carolyn Yehl and Patsy M. Caudill. Program Chairman William H. Counts was not available for the photo.



FORMER CLASSMATES — Reliving their campus days, from left, were B. Pat O'Rourke, Dr. Pete Verhoven, John Hall and Dale Greer, who represented the Alumni office at the charter party.



GETTING ACQUAINTED — President Norfleet chatted with Vaughn and Patsy Caudill of Frederick, Md., and Tom Smith of Fairfax, Va. Tom is the husband of the former Sharon Maggard of Lexington.



CAPITOL CONVERSATION — Lawrence (Lot) Marzetti, a retired official of the U.S. Census Bureau, chatted with U.S. Sen. Wendell Ford during a break in the proceedings. Sen. Ford is a former governor of Kentucky. Marzetti is an Ashland native.

# Alumni Today

## 1930s

**Dr. Roger W. Barbour** (38), Lexington, Ky., received an honorary doctoral degree at MSU's spring commencement in recognition of his prominence as a professor of zoology at the University of Kentucky. He is a Morehead native.

## 1940s

**Frances Young Crum** (40), is the author of a new children's book, entitled "Ralph and the Strip Miners," which traces the efforts of a little squirrel to save his family's home on a Kentucky hilltop from surface miners. Mrs. Crum and her husband, Ercel, moved back to Hitchens, Ky., from Washington, D.C., in 1974.

**Marjorie Cox Roberts** (43), Summitville, Ohio, has retired after 45 years in teaching and school administration. Her last assignment was principal of Franklin Elementary School in Summitville.

## 1950s

**Chester W. Greene** (54), Georgetown, Ohio, was selected this year for the 18th time to represent public school educators in five Southern Ohio counties at the convention of the National Education Association.

**Ethel E. Rose** (54), Arrowsmith, Ill., is the author of an article titled "Focus on Junior High," which appeared in a recent issue of "The Professional Photographer," official journal of the Professional Photographers of America, Inc. He is the owner of Rose's Photography.



**Dr. Howard L. Setser** (56), was selected for MSU's 1982-83 "Distinguished Faculty Award." A botanist specializing in Eastern Kentucky plant life, Dr. Setser is a professor of biology. He has been a member of the MSU science faculty since 1964.

**Charles W. Hoodenpyl, Jr.** (59), Jeffersonville, Ind., is chairman-elect of the 200-member House of Delegates of the Indiana State Bar Association. He will become the chairman of the policy-making body in October.

**Annabelle C. Snapp** (59), Mayslick, Ky., has been elected chairman of the Farm Home Advisory Committee of Maysville Southern States Cooperative. She is also vice president of the Mason County Retired Teachers.

## 1960s

**Fairce O. Woods** (60), Flemingsburg, has retired as principal of Fleming County High School after 12 years in the post and more than 30 years in public education. Earlier, he was a coach, teacher and principal in Breathitt and Powell Counties.

**Gary S. Link** (61), has joined Broadcast Music, Inc. (BMI) as a songwriter affiliate. Gary and his wife, Marianne, own and operate The Hut Restaurant in Ft. Myers, Fla., where he entertains six nights a week. He has recorded a number of albums.

**Craynor Slone** (62), has been named head basketball coach at Paul Blazer High School in Ashland. He guided Carlisle County to the runner-up spot in the 1983 Kentucky State High School Basketball Tournament. The Floyd County native compiled a 136-26 record in five years at Carlisle County.

**Donna Alexander Lander** (63), Perysburg, Ohio, has been appointed a sales representative for Little World Toys, Inc., of Madison, Wis.

**Roy A. Lucas** (64), has been named head football coach at Greenup County High School. Earlier he served as assistant coach at MSU and as head coach at West Virginia Tech.

**Ronald Thomas** (68), Flemingsburg, Ky., has published the first issue of a new literary magazine, "Beyond The City Limits." He is a social worker with the Kentucky Department for Human Resources.

**Joy Gooding** (69), Flemingsburg, has a part-time teaching position with Maysville Community College. Her husband, **Larry Gooding** (71), manages Gooding Auto Parts and was vice mayor of Flemingsburg.

**Allen J. Osborne** (69), has been named superintendent of the Frankfort, Ky., Independent School District. He came to the position from the superintendency of the Paintsville Independent Schools. Earlier, he held teaching, coaching or administrative positions in schools in Carter, Boyd and McCreary counties in Kentucky.



**Dr. James B. Osborne** (65), has been named director of corporate relations at Georgia Tech. Earlier, he was director of cooperative education at the University of Alabama, director of career planning and placement at East Tennessee State University, a faculty member at Lees-McRae College and a high school teacher in Louisville.

**Dwight D. Johnson** (66), is the principal of Elliott County High School, Sandy Hook, Ky. He formerly was a coach, teacher and principal in Johnson and Greenup Counties.

**Lillian D. Williams** (66), Lexington, Ky., has been promoted to assistant division counsel of Ashland Petroleum Co. with responsibility for all legal services to Valvoline Oil Co. She has been a member of Ashland's legal staff since 1976. Ashland Petroleum is the largest operating division of Ashland Oil, Inc.

**Gary Holcombe** (67), is a member of the company of "Annie" as Oliver Warbucks. His Broadway and off-Broadway credits include "The Golden Apple," "An Evening with Romberg" and "Damon's Song" and national touring companies "1976," "Man of La Mancha" and "On the Twentieth Century." He has sung with major symphonies around the country and had the lead role in "The Stephen Foster Story."

**Janie Rather Baldrige** (68), and husband **Bill** (68), are living in Lawrence, Kansas, where he is an assistant football coach at the University of Kansas. They have two children.

**C. J. Bailey** (68), Morehead, Ky., has been employed as a substance abuse counselor at Pathways, Inc., in

Montgomery County. His wife, **Bonnie Hay Bailey** (79), is an instructor of data processing at MSU. They have three children.

**Wayne M. Martin** (68), men's head basketball coach at MSU, wrote an article which appeared in a recent issue of "The Basketball Bulletin," the periodical of the National Association of Basketball Coaches (NABC).

## 1970s

**Sharon Angel Bennett** (70), is married to **Tom Bennett** (70), and they live in Villa Hills, Ky. Tom teaches at Covington Holmes High School, and Sharon teaches elementary school in Erlanger. They have a son.

**Sam W. Hall** (70), Maysville, Ky., has been appointed principal of Maysville Junior-Senior High School.

**Carolyn Sue Vanhose** (70), Nippa, Ky., has been promoted to office manager at Pontiki Coal Corp., Mine No. 2, in Martin County, Ky. She also teaches part-time at Prestonsburg Community College.

**Dale Greer** (71) has been appointed to a full-time faculty position in radio-television at Morehead State. A former radio and television news anchorman and producer and talk show host in Louisville, Greer managed his own broadcast production company before returning to MSU. He is a member of the MSU Alumni Hall of Fame.

**Betty Sue Staton** (71) was named "Teacher of the Year" at Camargo Elementary School in Camargo, Ky., where she has been a faculty member for 11 years.

**Elaine Tyree** (71), Frenchburg, is serving as the principal teacher in the basic skills education program at the Frenchburg Civilian Conservation Center. The program is operated by MSU under a contract with the U.S. Forest Service.

**Richard O. Butler** (75), Washington, Ky., has been appointed assistant principal of Maysville Junior-Senior High School. He has taught in the Maysville system for 11 years.

**Bette J. Dickerson** (72) is a program assistant for the W. K. Kellogg Foundation of Battle Creek, Mich. She is a doctoral candidate in applied sociology at Washington State University. Bette was a George Edmund Haynes Fellow with the National Urban League in New York City.

**Fred Hensley** (72) is serving as director of public information at Western Kentucky University. He came to WKU from a similar post at Delta State University in Mississippi. Earlier, Hensley was director of news services and sports information director at Morehead State. He is a former play-by-play announcer on the Eagle Sports Network. Fred and his wife, the former **Mary Jane Reed** (73), have two children.

**Robert B. Hudson** (72), Niceville, Fla., has received the Air Force Commendation Medal for outstanding performance of duty. He is a captain.

**James L. McDonald** (72), Lexington, Ky., has been promoted to the position of assistant secretary for policy benefits in the Kentucky Central Life Insurance Co. He joined the firm in 1972.

**Lisa M. Palas** (72) is a songwriter in Nashville, Tenn., where she is employed by the Songwriter's Association.

**Roger D. Cline** (73), Olive Hill, Ky., has become the first National Guard officer to be assigned to Army ROTC instructor duty at Morehead. A captain who was commissioned through

MSU's ROTC program in 1973, Cline previously served with the 201st Engineer Battalion in Ashland. He is only the third NG officer in Kentucky to be selected for ROTC duty. His academic rank is assistant professor of military science.

**Lawrence N. (Larry) Jones** (73) is a design engineer with the Kimberly-Clark Corp. in Conway, Ark.

**Gary Light** (73) and **Sandy Stephenson Light** (74) are serving as missionaries under the Foreign Mission Board of the Southern Baptist Convention. They are assigned to Trujillo, Peru, where Gary teaches at the seminary.

**R. Kent Pearl** (73), Richardson, Texas, is an application engineer for the Applicon Computer Co. in Dallas.

**Raymond Lamont Reed** (73), Louisville, Ky., is assistant advertising manager for the Kroger Co. in Louisville. He is vice president of the Advertising Club of Louisville.

**J. Lowell Ashby** (74), Shelbyville, Ky., has joined the Louisville office of Touche Ross & Co. as a management consultant.

**Vickie Cook** (74), Frankfort, Ky., is a full-time enlistment counselor with the Kentucky Army National Guard. She is a former music teacher in Danville. She is a sergeant.

**Deborah Yoder Miranda** (74), Kerrville, Texas, has been awarded a master's degree in nursing by the University of Texas Health Science Center in San Antonio. She is a nursing supervisor at Peterson Memorial Hospital in Kerrville.

**Dr. William Redmon** (74) is assistant professor of psychology at West Virginia University in Morgantown. Earlier, he taught at Western Michigan and served as a consultant to the Michigan Department of Mental Health.

**Diana Feldman Smith** (74) lives in Cincinnati, Ohio, where she works for Blue Cross-Blue Shield of Ohio.

**Joyce Crouch Whiting** (74) recently was promoted to assistant professor of speech at Morehead State. She lives in Lexington, Ky., with her husband, Dallas, an IBM engineer.

**K. Lee Chaudoin, Jr.** (75) received a master's degree in religious education this spring from Southern Baptist Theological Seminary in Louisville.



**NEW ASSOCIATE DEAN** — Dr. Wanda Bigham has been named associate dean for academic affairs at Morehead State University. Former director of MSU's Office of Instructional Systems, Dr. Bigham recently received a Fellowship in Academic Administration from the American Council on Education. She also is currently serving a two-year term as president of the Southern Association of Educational Opportunity Program Personnel. She has bachelor's and master's degrees from MSU.

# Alumni Today

**Connie C. Edmonds (75)**, Jackson, Ky., was selected as "Outstanding Teacher of the Year" in Breathitt County. She teaches fourth grade at LBJ Elementary in Jackson.

**Bernadine Howell Gallenstein (75)**, Florence, Ky., is director of nursing at Grant County Hospital in Williamstown.

**Burley R. Hudson (75)** has been appointed vice president for student affairs at Lees College in Jackson, Ky. He previously served as dean of students at Lees and as coach and teacher in the Breathitt county schools.

**Donald F. Russell (75)** has been appointed associate director of athletics at the University of Louisville with responsibilities in fund raising, sports information, promotions and broadcasting. A former Eagle football standout, Russell previously served as sports director at WMKY Radio on campus, as play-by-play announcer on the Eagle Sports Network and as MSU's first athletic development officer.

**Elaine H. Brewer (76)**, Louisville, Ky., is a pricing administrator for Brown-Forman Distillers Corp. in Louisville. She is a native of Mt. Sterling, Ky.

**Charles Conn (76)**, Morehead, is serving as a teacher in the basic skills educational program at the Frenchburg Civilian Conservation Center. The program is operated by MSU under a contract with the U.S. Forest Service. Charles also is the commander of the U.S. Army Reserve unit in Morehead at the rank of captain.

**Sharon Gayle Fletcher (76)**, is physical education instructor and head girls basketball coach at Pendleton High School in Falmouth, Ky.

**Timothy W. Gresham (76)**, Abingdon, Va., has been appointed to the staff of Virginia Attorney General Gerald L. Baliles. He also is a graduate of the University of Tennessee School of Law and has been admitted to practice in Virginia and Tennessee.

**Katie Ballingal Hunt (76)** is a teacher in the Nicholas county schools. She and her husband, Dennis, live in Carlisle, Ky., with their two children.

**James Lawrence Jones (76)** received a master's degree in church music this spring from Southern

Baptist Theological Seminary in Louisville.

**Robert W. Miller (76)** is serving as county attorney in Carter county. He has been practicing law in Grayson for three years.

**Michelle M. Mueller (76)** has joined the Knoth & Mead advertising and public relations firm as a vice president. She is responsible for general account supervision in San Diego, Dallas, and Orange county, Calif.

**Virginia Abrunzo Sargent (76)** is assistant director of community resources for the city of Covington, Ky. She and her husband, Ron, live in Ft. Wright.

**William F. Wilson (76)**, Flatwoods, Ky., has been promoted to senior business analyst in the planning and analysis department of Ashland Petroleum Co., a division of Ashland Oil, Inc. He has been an AOI employee since 1972.

**Marie Callihan Hardy (77)**, Flatwoods, Ky., was selected as "Outstanding Young Woman of the Year" in the Flatwoods area. She is head pediatric nurse at Our Lady of Bellefonte Hospital. Her husband, **Mark D. Hardy (77)**, is an attorney in Greenup county.

**Randy Ruley (77)** has been promoted to compliance officer at the Peoples Bank of Olive Hill, Ky. He joined the bank's staff in 1979.

**Randy L. Stacy (77)** is serving as assistant sports information director at the University of Kentucky. He came to UK from the SID's position at Tennessee Tech. Earlier, Randy was men's sports information director at MSU. At UK, the Knott county native is primarily responsible for press relations for the men's basketball team.

**Kathy Voiers (77)**, Flemingsburg, Ky., has been certified by the American Humane Association for obtaining a high level of proficiency in the treatment of family problems. She is a social worker for the Kentucky Department for Human Resources.

**Vic Carter (78)** has joined the news department of WSB-TV in Atlanta, Ga., as a reporter. Earlier, he was employed for three years by WRAL-TV in Raleigh, N.C. In Raleigh, he received the George Peabody Award for a 1981 documentary and a first place award for spot news coverage from the Radio-Television News Directors Association of the Carolinas.

**Michael Farrell (78)**, Morehead, is serving as a math teacher in the basic skills education program at the Frenchburg Civilian Conservation Center. The program is operated by MSU under a contract with the U.S. Forest Service.

**Dr. John D. O'Cull (78)**, Tollesboro, Ky., has opened a dental practice in Vanceburg, Ky. He also is a graduate of the University of Louisville School of Dentistry.



**PUBLISHED PROF** — Dr. Victor B. Howard, professor of history at Morehead State, recently had a major book published by the University Press of Kentucky. The book, titled "Black Liberation in Kentucky, Emancipation and Freedom, 1862-64," is the result of more than 10 years of research by the Harlan native. Dr. Howard earned his bachelor's degree at MSU in 1940.

**Valerie Poe Smith (78)** is married to **Ross Smith (78)**, and they live in Maysville, Ky., where Ross is the golf pro at Maysville Country Club.

**Thom Yancy (78)**, instructor of radio-television at MSU, has been named to a four-year term on the Advisory Committee of Kentucky Educational Television (KET).

**Mary Gay Clemons (79)**, Mt. Sterling, Ky., was named Montgomery county "Teacher of the Year." She teaches seventh grade at Miller Middle School.

**Dr. S. E. Dixon, Jr. (79)**, Sandy Hook, Ky., has become associated with the dental practice of **Dr. C. D. Howard (72)** in Grayson, Ky. Dr. Dixon also is a graduate of the University of Louisville School of Dentistry.

**David Flatt (79)** has established a general law practice in Sandy Hook, Ky. He is a 1982 graduate of Chase College of Law at Northern Kentucky University.

**Angela Patrick (79)**, Mt. Sterling, Ky., has joined the law firm of White, Peck and Carrington as a staff attorney. She is a 1982 graduate of the UK College of Law.

**William H. (Bill) Redwine (79)** has been promoted to coordinator of giving programs in the Office of Development at Morehead State. He previously served as university development officer. Redwine is responsible for supervising MSU's annual, deferred and endowed giving programs. He is married to the former **Susette Dalton (78)**, MSU's associate director of student activities and organizations. They have a son, Brett, who was born April 26. Bill is the advisor to Sigma Nu fraternity.

**Bobby K. Whitaker (79)** has been appointed as an assistant on the Washington staff of U.S. Rep. Carl D. Perkins, D-Ky. He previously was involved in retail sales with Clay, Greene and Nesbitt in Mt. Sterling.

## 1980s

**Joseph R. Broce (80)**, Flatwoods, Ky., has been named manager of debt administration for Ashland Oil, Inc., in Ashland. His responsibilities include administration of AOI's debt and capital lease obligations.

**John Ed Eversole (80)**, Booneville, Ky., has been promoted to captain in the U.S. Army Reserve. He has taught in the Owsley County school system since 1975.

**Allen L. Lake (80)**, Hopkinsville, Ky., was honored by the Kentucky Press Association with a first place award in local sports picture competition. He has been a staff photographer with "The Kentucky New Era" in Hopkinsville since 1981.

**Cherie McClure (80)** has joined the technical staff at Opryland, U.S.A., in Nashville, Tenn., where she is associated with the production of "I hear America Singing."

**Stephen L. Rego (80)**, Lexington, Ky., has been awarded a master's degree by Troy State University in Alabama. A first lieutenant in the

## What's New with You?

MOREHEAD STATEment welcomes updates on family additions, job changes, relocations, promotions—whatever you think is newsworthy. Help us keep track of you by filling out this form and returning it. Recent newspaper clippings also are appreciated.

Name \_\_\_\_\_ Class Year \_\_\_\_\_

Spouse's full name \_\_\_\_\_ Class Year \_\_\_\_\_

Children \_\_\_\_\_

Current address—STREET: \_\_\_\_\_

CITY: \_\_\_\_\_ STATE: \_\_\_\_\_ ZIP \_\_\_\_\_

NEWS ITEM \_\_\_\_\_

\_\_\_\_\_

\_\_\_\_\_

(Send to MOREHEAD STATEment, Alumni Center, Morehead, KY 40351)



**ANTIQUE MUSIC** — MSU alumni Meta and Mervil Whitt of Fairborn, Ohio, played old songs on antique instruments for spectators at MSU's recent Appalachian Celebration. The "tater bug mandolin" she is playing dates back to the 1920s, and the cigar box fiddle he is playing was handmade around the turn of the century. Both are traditional mountain instruments. Mervil graduated in 1950 and Meta in 1958.

U.S. Army, he is stationed at Fort Benjamin Harrison, Ind. He and his wife, **Betty Cox Rego** (78), have two daughters.

**Walt Terrell** (80) is playing his second season in the baseball major leagues as a starting pitcher for the New York Mets. Called up in late 1982, Terrell, formerly of Jeffersonville, Inc., has been a member of the team's starting rotation since spring training.

**Denese Williams** (80) has been appointed office systems analyst for Universal Business Machines in Boise, Idaho. Universal is a distributor of Lanier business products.

**Christa Beth O'Cull** (81) has been appointed director of a residence hall at Eastern Kentucky University in Richmond. Earlier, she was employed by the Division of Student Housing at MSU.

**Boyd L. Randolph** (81), Mintonville, Ky., has been nominated as the Republican candidate for Casey County property evaluation administrator in the November election.

**Deborah K. Woods** (81), Brooksville, Ky., has joined Fleming County Hospital as director of social services and public relations.

**Randall V. Fritz** (82), Flemingsburg, Ky., has joined the Farmers Deposit Bank as collections office.

**Anita Louise Joly** (82), Radcliff, Ky., recently reported for active duty with the U.S. Army. Following her training at Fort Dix, N.J., and Fort Jackson, S.C., she will become a member of an Army Reserve unit in Radcliff.

**Rocky Adkins** (83) has been named boys head basketball coach at Elliott County High School in Sandy Hook. A member of last season's NCAA squad at MSU, Rocky is returning to the school where he was a standout player and where his father, **Jess Adkins** (63), coached for several years. Rocky is married to the former **Bonita Boggs** (84), also of Sandy Hook.

**David Burba** (83), Grayson, Ky., has been admitted to the College of Veterinary Medicine at Auburn University in Auburn, Ala. His brother, **Daniel Burba** (82), has completed his first year of veterinary studies at Auburn.

**Teresa Fryman** (83) has been named manager of Prospect House, an adolescent group home in Berea, Ky. She was selected last spring as MSU's outstanding student in social work. Prospect House is operated by the Presbyterian Child Welfare Agency.

## Wedding bells

**Tammy Jo Worthington** (81), Greenup, Ky., and **David Patrick Edge**, Huntington, W. Va.

**Tracy Lynn Hutchison**, Jacksonville, Fla., and **Steven Paul Adams** (77), Flatwoods, Ky.

**Marcia Lynn Stephens**, Oldtown, Ky., and **Thomas Ray Riffe** (78), Grayson, Ky.

**Lara Eugenia Hopkins** (78), Morehead, Ky., and **Charles Henry Overy**, Lexington, Ky.

**Sonja Gay Conn**, Olive Hill, Ky., and **David Brian Carroll** (81), Olive Hill, Ky.

**Julie Roberts Fannin**, Morehead, Ky., and **Dale D. Greer** (71), Morehead, Ky.

**Eileen Chelf Sumner**, Frankfort, Ky., and **Richard Hampton Fisher, II** (69), Frankfort, Ky.

**Sheryl Kim Bailey**, Paris, Ky., and **Clifford Wayne Shumate** (81), Carlisle, Ky.

**Karen Elaine Tolliver**, Greenup, Ky., and **Timothy Dale Ison** (81), Greenup, Ky.

**Peggy Lynn White** (75), Perryville, Ky., and **Edward Womack**, Atlanta, Ga.

**Teresa Jane Bilotta** (76), Louisville, Ky., and **Olin McMillan, Jr.**, Quincy, Fla.

**Jacqueline Marie Stephens** (82), Grayson, Ky., and **Robert Lee Garbrick** (80), Cincinnati, Ohio.

**Brenda Key Steele** (81), Grayson, Ky., and **Terry Lee Prichard**, Grayson, Ky.

**Karen Lynne Evans** (73), West Liberty, Ky., and **Ronald E. Stanfield**, Paris, Ky.

**Mary Joyce Avis** (83) Bardstown, Ky., and **Bryan D. Boudreault** (82), Riviera Beach, Fla.

**Patricia Ann Thompson** (83), Louisa, Ky., and **Dennis Ray Hatfield**, Inez, Ky.

**Diana Lea Kappes** (82), Grayson, Ky., and **Robert Lee Chappell**, Morehead, Ky.



**WRITER'S RETURN** — Dressed in traditional clothing from his native Nigeria, Dr. Sam Adewoye, class of 1972 at Morehead State University, often made public appearances during the 1982-83 school year at MSU. He has written three novels. Dr. Adewoye visited MSU while on leave from a university in Nigeria.

## Cassity renamed to Board of Regents



Lloyd Cassity

**Lloyd Cassity**, Ashland, was reappointed by Gov. John Y. Brown Jr. to a six-year term on the Morehead State University Board of Regents.

A member of the board since 1963 and its chairman from 1976 until this summer, Cassity is president of Johnson's All-Star Dairy, inc. A native of Morgan County, he joined Johnson's in 1949 and became its chief executive in 1968. His new term on the MSU board will expire March 31, 1989. Cassity is the senior member of the board in years of service. He is a former president of the MSU Alumni Association and the Joint Alumni Council of Kentucky.



**CAMPUS CONNECTION** — Maj. Gen. Billy G. Wellman, the adjutant general of Kentucky and state justice secretary, shared a personal moment with Dr. Custer B. Reynolds, Nicholasville, during a recent event on the MSU campus. Both men are MSU alumni. Wellman, who also serves as acting commissioner of the Kentucky State Police, is a member of the Alumni Hall of Fame. Reynolds, who headed MSU's 1982-83 Annual Giving Campaign, is a former president of the Alumni Association. Wellman recently was elected president of the Adjutants General Association of the United States (AGAUS) for a two-year term.

## 'Hawkisms' available

"The object of conducting is to stand up there and do it without making a fool of yourself."

That's what Dr. Robert Hawkins, better known as "Hawk" to his family, friends and students said about his profession. He was conductor and director of bands at MSU from 1966 until his death in 1981.

This and other one-liners by and about him are included in "Hawkisms," a compilation of stories about Hawk as told by his students, colleagues, family and friends.

"It's a memorial, but it isn't all sanctimonious," says Kate Hawkins, his widow and instructor of English at MSU. "It's part tomfoolery, a total reflection of his life."

Hawk loved practical jokes. "I guess because he was a musician," she says, adding "Beethoven was a practical joker, so I suppose it goes with the profession."

One of the practical jokes mentioned in "Hawkisms" relates how one of Hawk's colleagues was practicing the clarinet when a plumber opened the door, peeked in and said: "You're just a little bit flat in the throat tones," and closed the door. Hawk, of course, had sent him.

Another time, during a band trip, Hawk slipped into a colleague's motel room and put a three-foot icicle into his bed.

"It is both sacred and profane, including everything from poker to podium," Kate says of the book.

Poker is mentioned throughout, in stories told by many of his acquaintances. Coffee and cigarettes are mentioned quite often, too.

"He loved to play cards, and he always had a cigarette and a cup of coffee nearby," says his

widow. "When we first talked of a scholarship in his honor, Hawk said the requirements should be that the student be an excellent conductor and smoke a pack of cigarettes and drink a pot of coffee a day."

In 1975, Hawk had a serious operation. When he went to the hospital, he gave his wife instructions for starting a scholarship with money to be raised by the sale of tapes of his four best performances. But he survived the operation and the scholarship was put on hold for six years while he continued to work.

"We never mentioned it after he came home," Kate remarks.

Now, the tapes he selected and "Hawkisms" are on sale, with proceeds going to the Robert Hawkins Memorial Scholarship Fund. "Hawkisms" is priced at \$3 a copy, and the tapes are \$8 each.

"He knew nothing of the book, and if he did, he probably would have vetoed it, or made some crass remark, I'm sure," says Kate.

"Hawkisms" was compiled and edited by Charles Martyn, band director at West Virginia Institute of Technology and a close friend of Hawk's.

To order a copy of "Hawkisms," or for more information about the tapes, contact Kate Hawkins at MSU, UPO 1264, Morehead, KY 40351.

**HIGHER EDUCATION WEEK** October 1 to 8, 1983

# Discover

YOUR ALUMNI ASSOCIATION



You may be surprised at what we can offer you! Check the list below to see how many of our programs interest you. We will send you details on everything from academic support groups to ticket discounts.

- Academic Support Groups
- Admissions Volunteers
- Alumni Awards
- Alumni Book Club
- Alumni Chapters
- Alumni College
- Alumni Executive Council
- Alumni Publications
- Alumni Records
- Class Reunions
- Club Reunions
- Deferred Giving/Life Insurance
- Finals Week Study Center
- Graduation Picnic
- Homecoming
- Legislative Relations
- Library Privileges
- Membership Gifts
- Memorial Books
- Pre-Game Parties
- Souvenir Merchandise
- Special Events
- Study Tours (U.S. and abroad)
- Ticket Discounts



**MOREHEAD STATE UNIVERSITY**  
ALUMNI ASSOCIATION, INC.

Name \_\_\_\_\_ Class Year \_\_\_\_\_

Address \_\_\_\_\_

City \_\_\_\_\_ State \_\_\_\_\_ Zip \_\_\_\_\_

Please mail list and coupon to: MSU Alumni Association  
Alumni Center  
Morehead, KY 40351

# Don's Digest

By **DON YOUNG, SR.**  
Executive Secretary-Treasurer  
MSU Alumni Association

We're coming on strong!!

As the organization which represents the graduates of MSU, your Alumni Association is moving to the front. We have made major changes in organization, physical facilities and objectives. All of these actions have resulted from a common desire to create a more effective, efficient and representative organization for you.

Under the direction of fellow alumnus Keith Kappes, a new Division of Alumni, Development and Public Affairs has been created. This merger of existing advancement functions enables all staff who work with our alumni to have the advantages of closer cooperation, coordination and mutual support. With the addition of automated equipment, we are improving our record-keeping ability and we will be in touch with you more often to update your accomplishments and successes.

For example, this is the first issue of a new, joint publication to be mailed more often, to include more information on a wider variety of subjects, and to be printed on a better quality paper. You will see additional areas of improvement in the near future as we intensify our efforts

to find "lost" alumni, to provide new services and activities and to strengthen our communications link with alumni.

President Merl Allen is completing her first year as president of the Alumni Association, and, under her leadership, the Executive Council and its Committees have accomplished major projects which will benefit the University for years to come. Perhaps the most important project was the feasibility study for the deferred giving through life insurance program, started by past president James P. Pruitt. Now at the forefront are increased activities and assistance for students.

The Association wants to be your organization. It should express your ideas and suggestions for a better Morehead State University. Please consider making a special effort to help by finding us a student, by keeping us informed about yourself, by assisting us in starting an alumni chapter in your area, by attending alumni functions on campus, by sharing your ideas and interests, and by being counted as an active voting member as a result of a membership gift to the Alumni Fund.

If you want the Alumni Association to be a positive force for a constantly improving MSU, we invite you to come aboard.

## GIFTS & GRANTS

\$37,000 from the NCAA for continuation of a sports program for 325 youth in Rowan County.

\$30,508 from the Kentucky Department of Human Resources for continuation of the Displaced Homemakers Program.

\$10,050 from Russell J. Peterson for the establishment of a student loan fund.

\$30,000 from Ashland Oil, Inc., for unrestricted support.

\$17,503 from the Kentucky Real Estate Commission for continuation of real estate education services.

\$207,961 from the U.S. Department of Education for continuation of the Upward Bound program.

\$6,202 from the Myrtle Mae Mitchell Trust for scholarship support.

\$90,263 from the U.S. Department of Education for continua-

tion of the Talent Search Program.

\$54,026 from the Corporation for Public Broadcasting for continued support of WMKY Radio.

\$2,000 from Sierra Coal Co. for support of mining technology and energy studies.

\$6,000 from the E. O. Robinson Mountain Fund for scholarship support.

\$5,000 from Phillip M. Tackett in data processing equipment.

\$2,175 from WHAS Crusade for Children for scholarship support.

\$3,035 from Drs. Lewis and Ruth Barnes in instructional equipment and supplies.

\$3,000 from the Federal Reserve System in instructional materials.

If you are interested in giving to MSU, we invite you to contact the Office of Development at 606-783-2033.

# Letters to the Editor

Dear Editor:

From the left to right in the enclosed photo are Paul Young, Virginia Harpham, Ralph Schwartz, Christine Scott Thaw, and Leah Schwartz Tourkow.

Now, if you will turn to your 1937 "Raconteur," you will find all of them except Leah on the very opening pages in the pictures that spell out "Raconteur." Paul is the stem of the letter "A," Christine and Virginia are seen in the first stem of the letter "N," and Ralph is busy leading his drum corps on the street behind Fields Hall in the final letter "R."

This was the first time in 45 years these former Morehead students got together at the home of Ralph Schwartz in Ft. Wayne, Ind. They all agreed it was a most enjoyable and heart-warming experience.

In 1937 all but Leah were scholarship students in the Morehead Music Department. Leah appeared in 1941 as an assistant to the late, great Lewis Henry Horton, noted head of the department. Paul Young played and taught trombone and was business manager of the Raconteur. Virginia Harpham played and taught viola and was voted the most versatile student in 1937. Christine played and taught violin and viola and was secretary-treasurer of the sophomore class of 1937. Ralph played and taught percussion and was business manager of The Trail Blazer, editor of the Quill and Quair, and president of the English Majors Club.



Paul has taught band and orchestra at schools in Mt. Sterling and Lynch. He was vice-president of Beaver Associates, consultants to fund raising and community relations, and now owns his own firm, Young & Young.

Virginia Harpham is principal player of the second violin section of the Washington Symphony and an arranger for the U.S. Marine Band.

Christine lives in Montreal where she teaches and plays professionally. She commutes regularly to Denmark where her daughter lives.

Ralph is owner of Schwartz Babyland, a chain of children's stores operating in shopping centers, and recently retired after 40 years as tympanist of the Ft. Wayne Philharmonic Orchestra.

Leah is active in religious affairs and is married to Fred Tourkow, an attorney.

All five remember Morehead with love and loyalty and hope that Morehead can be proud of them.

Ralph Schwartz  
Box 11352  
Ft. Wayne, IN 46857

# New aid started

In an effort to recognize and encourage superior academic achievement, Morehead State University has instituted a new student financial aid package which includes six scholarship and grant programs tied to academic performance.

President Norfleet described the new programs in use this fall as "a serious and well-planned effort to attract and retain more of the most capable students."

"We have taken this step because of our institutional commitment to enhance the academic excellence of the University now and in the future," Dr. Norfleet added.

The aid programs include:

- Presidential Merit Scholarship, \$1,500 yearly toward tuition and housing fees.
- Leadership / Recognition Grant, \$400 toward housing fees.
- Regents Scholarship, \$600 toward housing fees.
- Regents Scholarship for Transfer Students, \$600 toward housing fees.
- Valedictorian / Salutatorian Award, \$800 toward tuition and housing fees.
- Two-year College Transfer Scholarship, \$400 toward housing fees.

Additional information and application forms are available from the Division of Admissions, MSU, Morehead, KY 40351.

# Bio study ready

A new biological study of the Big Sandy River Basin is available from MSU's Appalachian Development Center.

The study, titled "The Macroinvertebrates of the Big Sandy River Basin, with Special Emphasis on the Levisa Fork Drainage" was completed by Dr. Gerald DeMoss, professor of biology and an MSU alumnus.

"I would call it a check list of the invertebrate biota of the Big Sandy River," explained Dr. DeMoss. "It would primarily be of interest to aquatic biologists, faculty members, invertebrate zoologists and anyone doing research in this area."

During the research, which was originally done for the U.S. Corps of Engineers in Huntington, W. Va., no rare, endangered or threatened species were found, according to Dr. DeMoss.

The study includes a list of organisms and where they were found.

Copies of the study are available free of charge from the Appalachian Development Center, Morehead State University, Morehead, KY 40351.



**NATIONAL SPEAKERS** — MSU's speech and individual events team placed fourth in the nation at last spring's National Forensic Association National Championship Tournament. Members of the team, from the left, were Truman Monison, speech graduate assistant from Ypsilanti, Mich.; Keith Murphy, Grayson junior; Scott Coburn, Grayson sophomore; Belinda Stambough, West Liberty junior; Dan Vice, team coach; Cheryl Pollitte, Morehead freshman; Rachel Holloway, Morehead senior; Donna Totich, Morehead senior; and Lori Glass, Parkersburg, W. Va., senior.

# Some things can only be shared at college.



**L**ife at college is a very special experience. It's a time to grow. A time to share.

Living on campus at Morehead State University gives you the opportunity to enjoy the friendship of your roommates, watch exciting intercollegiate athletic events, get involved in fraternity or sorority and 100 other student groups, and listen to interesting and entertaining guests.

Morehead State University offers you the opportunity to experience all of this, plus many other cultural and social activities in a lively college community.

If you're looking for a college, come and experience the good life at Morehead State University.



**Attention Alumni:** You can help MSU by sharing this page with a high school senior and telling them of your great experience in Eagle Country. For more information, the address is Division of Admissions, MSU, Morehead, KY 40351. In Kentucky, the toll-free number is 1-800-262-7474. In adjoining states, the number is 1-800-354-2090.

# MSU's most wanted list

These alumni aren't wanted by the campus police, but, as of July 1, we did not have their current addresses. If you spot the name of a former classmate or relative and know their location, please share the information with us as soon as possible. Send your letter or postcard to MSU Alumni Association, Alumni Center, Morehead, KY 40351. Thanks for caring — and sharing.!

- 1934**  
Lana McClure
- 1935**  
Hazel E. Frank  
Edward Ellis Hale  
Charlotte Slagel  
Bernard Whitt
- 1936**  
Dr. Murvel Blair  
Charles McClave  
Kathleen P. Morris  
Roy Vanderpool
- 1937**  
Earl Hogg  
Lillian M Martin  
Shirley D. Poynter
- 1938**  
Thelma L. Earwood  
Woodrow W. Gearhart  
Ruth M. Lyons  
Louise T. McCoy  
Elizabeth R. McHugh  
Miriam B. & William C. Stewart  
Altheah Thompson
- 1939**  
Lucille Basenbach  
Christine T. Ross  
John E. Simons  
Florence Litman Smith  
Charles Tate  
Mary Tussey  
Ruby Hunter Watson
- 1940**  
William Clark  
Christine Hall  
Iva K. Howard  
Virginia Hart Reynolds  
Albert L. Rhoton  
George Steen, Sr.  
Martha E. Willey  
Agatha E. Williams
- 1941**  
Clifton Basye  
Dorothy S. Harris  
Wanda Mae Mitchell  
Gladys Ramey  
Kathryn Talley
- 1942**  
Mary Jane Beattie  
Jack W. Dumford  
Sara A. Maloney
- 1943**  
Alberta Wolf Ankrim  
Erika Nelkirk Decker  
Nellie Fisher  
Madge Johnson  
Lionel O. Lyon  
Vincent Zachem
- 1944**  
Dr. Joseph E. McKinney  
Gladys Patterson
- 1945**  
Marguerite F. Armfield  
Hermalalee Conley  
Blanche McGlone  
Mark F. Rice  
Bess Ewing Roberts
- 1946**  
Bernice Cabell  
Ray Justice  
Glen Robinson  
Homer W. Stepp
- 1947**  
Ollie J. Conley  
Goldie Mabel Haymaker  
Mrs. Gladys J. Hunnicut  
Bill D. Reynolds
- 1948**  
Arthur Blankenship  
Garnet S. Cooksey  
Aerolene Ison McLin  
Larry Workman
- 1949**  
Modie R. Howard  
Naomi Kazee  
Betty Lewis  
James C. Purkhiser, Jr.  
Irvil Rogers  
Fay Slone  
Joseph W. Stapleton  
Mr. Alonzo C. Varney
- 1950**  
Beatrice R. Arnette  
Henry Arnette  
J. Donald Galbraith  
Darwin Hunt  
Lola F. Jones  
Edna Kiser  
Ora McKenzie, Jr.  
George Rogers  
Oliver E. Rogers  
Paul Leonard Smith
- 1951**  
Lurlie W. Hatfield  
Joseph P. Heavey  
Ada Green Kidd  
Lottie McBrayer  
Mary Elizabeth Murphy  
Billy Joe Peed  
Vernon H. Risner  
Maggie R. Smith  
James Edgel VanHoose
- 1952**  
Eugene Bailey  
Clarice & Nancy Bustetter  
Mabel & Harland Crawford  
Carroll Hall  
Eunice Elizabeth Hinkle  
James Duane Landreth  
Galada Higgins Patrick  
Mary M. Reynolds  
Clarice Bustetter Stanley  
Charles Ray Thompson  
Verna A. Thompson  
Bill Wade  
Stanley R. Wheeler
- 1953**  
Bess P. Bailey  
Mrs. Barbara B. Bariow  
Beryl Motley Cornwell  
Geraldine Cowan  
Lodema B. Cox  
Marvin G. Danner  
Jack Elkins  
Lorene H. Greenhow  
Patricia O. Hampton  
William Elsworth Hauck  
Eunice J. Hurley  
Dudley Lee  
Arvis Phillips Parrish  
Agnes Lima Phillips  
Clemma Shubert  
Amos Wesley Summers, Jr.  
Donald L. Thompson  
Pauline J. Walker
- 1954**  
Coburn Black  
Louanna Bryant  
Allie F. Gilvin  
Wilma J. Lewis  
Mervill Randolph Mann  
Faye C. Meeke  
Jack Roberts  
Menifee Slone, Jr.  
John Spriggs  
Carley Gene Tolliver  
Geneva R. Walker
- 1955**  
Mary Eloise Barker  
Louise Williams Christian  
Mildred W. Ferrell  
Clement A. Hall  
Charles David Harris  
Oma Pearl Hatfield  
Pet Salisbury  
Lena Downs Stephens  
Nancy Jane Stratton  
Grover D. Taylor
- 1956**  
Margaret V. Allis  
Velma Atkinson  
Charles Bowers  
Raleigh W. Chadwick  
Brida Collins  
Dorothy Conley  
Lois Crawford  
David R. Davis  
Maggie R. Kiser  
Alva Knechtleyk  
Mrs. Virginia Moles  
Elva Mae Muncy  
Robert C. Richards  
William A. Saulsberry  
Carroll L. Saunders  
Ollie J. Slone  
Isabel Prichard Stiner  
Challis C. Warren  
Adrian Wells  
Charles R. Williamson
- 1957**  
Ruby Collier Adams  
Thelma Bates  
Kathleen Chandler  
Icile Neeley Cornette  
Woodrow W. Creech  
Ina Carey Hendrix  
George Lacey  
Billy J. Jarshall  
Richard Miller  
Antionette Dickens Nowak  
Mr. & Mrs. Homer Oliver  
Martha Pence  
Dr. Robert E. Polley  
Bill Smith  
John K. Smith  
Audra Horn Stewart  
Everett T. Vanover  
Nan K. Ward
- 1958**  
Florence R. Brannen  
Sharon L. Cole  
E. J. Fannin  
Robert Wayne Hudson  
Mr. & Mrs. Daeton P. Kiser  
Eddie Montgomery  
Irma Ray  
Beth Patrick Robinette  
Ruby A. Ruley  
Bob Dean Ruthh  
Alice Horton Seipelt  
Andra Ray Smallwood  
Lon Stamper, Jr.  
Mae Caudill Thompson  
Olive W. Tingle  
Ruby Jean Turner  
Madge Litton Wagoner  
Aria Dale Walker
- 1959**  
Charles N. Amos  
Faith Blevins  
Ruby Reeves Burton  
Virginia L. Caudill  
Howard Chandler  
James T. Conley  
Wilma Reed Crawford  
Billy J. Day  
Mr. & Mrs. Ruby W. Ellington  
Donald C. Ensminger  
Gavin Augustus Fugate  
John W. Gullett  
Edith Gunnell  
John P. Haag  
Edith Greene Holbrook  
Elizabeth Fletcher Horn  
Thomas G. Howard  
Marilyn Johnson  
Dixie W. Justice  
Delma Day Little  
Richard Arno Neiser  
Barbara Sue Phillips  
Emily Jean Preston  
Esther Richie  
Ruby Roe Robinson  
Harry James Wallace  
Ethel Walters Wallen  
Mrs. Marcena Webster  
Harry James Welsh
- 1960**  
Jerry Amburgey  
Joseph E. Blackburn  
Della M. Brown  
James W. Clark  
Mabel A. Collins  
Phillip Keith Cornett  
Forrest Curry  
Allie B. Curtis  
Bess Damron  
C. W. Day  
Reda Castle Day  
Orville J. Doyle, Jr.  
Barbara B. Ferrell  
Kenneth E. Gilbert  
Kenneth Ray Greene  
Bill Grimes  
Wilbur L. Holbrook  
Mona Ethel Johnson  
Sandra Lynn Johnston  
James E. Martin  
Shirley Belcher Phillips  
Howard Russell Rule  
Merrill Salyers  
Thomas M. Sims  
Richard G. Slater  
Ralph M. Smith  
Robert D. Smith  
Joe P. Tackett, III  
William Talley  
Catlett Tipton  
Agnes N. Young
- 1961**  
Betty L. Borders  
Russell Bowen, Jr.  
Woodrow W. Burchett, II  
Martha V. Clark  
Betty D. Collins  
Dr. Man Singh Das  
Emily M. Durrett  
John Farrell  
Georgia Kay Forsythe  
Lloyd Goble  
Mary B. Grubb  
Johnnie M. Hall  
Dorothy Jarvis  
Gary R. Lee  
Patricia West Livingston  
James Martin  
Aline Hogge Miller  
Gladys Lewis Prichard  
Janet C. Ranier  
Blueford M. Rice  
Eidean Lambert Roberts  
Bonnie Lou Rogers  
Cova Donald Smith  
Bernice Boggs Stevens  
Roy P. Stratton  
Eunice Taulbee  
Lucille C. Trent
- 1962**  
John E. Adams  
G. L. Arnett  
Ronald G. Barker  
Luther Bradley  
Max Baer Calhoun  
Jewell M. Clevenger  
Mr. & Mrs. Roger Coffee  
Garlena R. Colemann  
Temple L. Cope  
Douglas Dees  
Wilber E. Doddridge  
Katherine E. Duncan  
Garnetta M. Graves  
Brenda Snelling Griffin  
Joseph B. Hall  
Mr. & Mrs. Douglas J. Hayes  
Morgan Hedrick  
Donley M. Hill  
Clyde & Peggy Honaker  
Robert J. Igo  
Barbara A. Kazee  
George D. Kilgore  
Miriam C. Krauter  
Ronald Lea  
Loretta King Little  
John B. Malone  
Dr. William S. McMichael  
Patricia T. McNeal  
Dudly Melton  
Marilyn J. Moore  
Charles Newman  
Linda Rye Ratliff  
Mary Lee Ricketts  
Glen O. Ridenour  
Geneva Branson Roberts  
Don Roush  
Billie Vertice Scaggs  
Bonnie D. Shapland  
Lena Denham Smith  
Darrell Raymond Stephenson
- 1963**  
Deloris C. Adams  
Nancy Ruth Akers  
Glenna Compton Amburgey  
Stephen S. Barnett  
Norma H. Bergeron  
Dudley Blevins, Jr.  
Marguerite B. Boggs  
Wanda J. Boggs  
Clydia B. Brashear  
Harold J. Brewer  
Betty Burchett  
Beatrice R. Calvert  
Viola R. Cassidy  
Glenn I. Chandler  
Lassie B. Copley  
Patricia J. Cox  
Ronald R. Dixon  
Ben R. Ellis  
Jackie R. Ellis  
Norma Ellis  
Albert D. Forcum  
Madge C. Fraley  
L. Sue Bodinhiemer Fridley  
Helen L. Gallihier  
Glenn Forrest Gleim  
Martha Gray  
Juanita White Gregory  
Ray H. Grider  
James Gross  
William E. Haines  
Janice Evelyn Hauck  
William R. Herald  
Suellen Major Hill  
Mrs. Hermione T. Jones  
Mr. & Mrs. Larry G. Jones  
Stuart H. Kaminsky  
Sharon Pennington Lewis  
Wanda Louella Lewis  
Janice Long  
Charles Edwin Lyon  
Virginia L. Mabry  
Warner Keith Manning  
Beverly T. Mayabb  
Henry F. McGuire  
Bonnie D. Meyer  
Kermit Ewell Miller  
Gloria I. Mobley  
Lydia M. Morgan  
Darrell Lynn Murphy  
Jacqueline R. Paddock  
Ray Allen Patrick  
Gladys B. Preston  
Charles Edwin Ratliff  
Janice Lea Reed  
Alma L. Roberson  
French R. Roberts  
Mr. & Mrs. Thomsa G. Salyer  
John T. Shook  
Rosemary B. Shook  
Thomas D. Smith  
Mr. & Mrs. James Staton, Jr.  
Joseph G. Stearns  
Jack B. Stephens  
Judith Henke Stewart  
James H. Thomas  
Robb W. Thompson  
Nadean H. Thornsberry  
Lillie Townsend  
Myra J. Turman  
Magdalene Crisp Valint  
Emma A. Ward  
James & Sandra West  
John Emery White  
Jack R. Williams  
Willis W. Williams  
Mr. & Mrs. Jan R. Willis  
William L. Worthington
- 1964**  
Anna Mae Arnett  
Clara D. Arthur  
Sharon Lynne Bailey  
Carl Baldrige  
Mary Campbell Bonneau  
Delmas Brewer  
Rita Wilson Buchette  
Betty Ellis Canter  
Virginia Pfeffer Clayton  
Joyce Taulbee Clerc  
Marlene C. Clevenger  
James C. Codell, III  
June J. Combs  
Steve Crace
- 1965**  
Georgeanna Almazon  
Kenneth Charles Ambrose  
Meta Faust Bach  
William T. Barry  
John A. Beckley  
Joe T. Bennett  
Melvin Bergman  
David Franklin Boyer  
Allene Branham  
Paul F. Carpenter  
Clarence J. Combs  
James Elmo conley  
Demarkis Goodwin Eisinger  
Dr. Samuel Garten  
Gary Gemmer  
Reba H. Gibson  
Elizabeth J. Goodwin  
Mr. & Mrs. Robert E. Honsted, Jr.  
Sybil J. Lemay  
Ruby Carol Lucas  
Kent E. Maggard  
Sandra Slone Martin  
William P. Martin  
Sharon Leigh McBrayer  
Mr. & Mrs. David Melton  
Joseph L. Mills  
Darwin Leon Newkirk  
William E. Norcross, Jr.  
Mr. & Mrs. Richard Joseph Osterrieder  
Richard Stephen Pawlick  
Reva Joyce Phelps  
John Salton Redman  
Paul D. Reffitt  
Martha Ann Risner  
William C. rose  
William Scott  
John E. Shelton  
Shirley Sagraves Shelton  
Glenda Mullins Snyder  
Patricia Hall Verhoven  
Mary Ann Walker  
Ted Walls  
Vivian Watts  
Phyllis L. Wolf  
Gerald L. Woollard
- William C. Stevens  
Lloyd Story, Jr.  
Billy Raymond Thomas  
Elijah V. Turman  
Larry D. Waggoner  
Imogene Ward  
Rachel T. Whitney  
Durward V. Whitt
- Betty J. Craft  
Jimmie Crosthwaite  
Lloyd Ray Davis  
Benny Dotson  
Joseph Elliot  
Harold J. Fawns  
Emerson Fyffe, Sr.  
John W. Gibson  
Betty Gay Gilkison  
James Smith Griffin  
Arthur R. Hanig  
Hester R. Harding  
Edmund Tracy Hartman  
George Hazelwood  
Mr. & Mrs. David E. Henderson  
Mr. & Mrs. Raymond L. Ingram  
Martha Fay Jaquay  
Esta Johnson  
Robert W. Knox  
Jeffery G. Laycock  
Jimmy V. Little  
Patricia Jo McKinney  
Anna L. McNeill  
Larry P. Midkiff  
James Kenna Miller  
Phillip D. Newsom  
John D. Oaks  
Noal F. Oney  
Donald Paddock  
Mr. & Mrs. Jack Pelphry  
Linda Rose Pfaffenberger  
Kerry C. Rice  
Albert Clay Richardson  
Milton R. Roeth  
James G. Rowland  
James J. Schweitzer  
Charollet Gregory Schworer  
Gloria J. Shaffer  
Ethel Shepherd  
Harold L. Shingler  
Alvin W. Simon  
Mary Lois Smith  
Robert L. Storey  
Vonnice Nilson Svec  
Roger L. Tackett  
Vivian K. Talley  
John T. Tucker  
Hubert B. Ullberall  
Vernon Leroy Ullrich, Jr.  
Sid Darrell Walters  
Louvena Watts  
Charles T. Whittier, Jr.  
Paul Ray Wilson  
Russell Wingate



1966

Dr. Rafeh Wael Aboul-Hosn  
 Brenda Kitchen Bennett  
 Robert Bennett  
 Martha L.M. Bihl  
 Mahmood Bozorfad  
 Mr. & Mrs. Harvey Brazin  
 James N. Brickey  
 Daniel Allen Brown  
 James L. Brown  
 Harry Brumbaugh  
 Robert J. Clemons  
 Curtis D. Cochran  
 Capt. Denver G. Compton  
 Mr. & Mrs. Larry J. Conley  
 Joyce A. Cushman  
 Margaret Adams Dunlap  
 Nancy Byman Gibson  
 Peter D. Grabowski  
 John William Groelke  
 Sue E. Hall  
 Howard C. Hall, Jr.  
 Mr. & Mrs. Ronald Harper  
 Louis R. Haubner  
 Beverly Hayes  
 Robert C. Henke, Jr.  
 Edith Irene Hopkins  
 Phyllis Thompson Hughes  
 Robert P. Hurt  
 Boyd A. Hutchinson  
 Hartzel Jennings, Jr.  
 Robert L. Johnson  
 Lawrence E. Kiasmeier  
 Mr. & Mrs. George L. Langston  
 Judith Brock Lantz  
 Vernal Little  
 Anna Belle Lyons  
 Janet Lykins Martin  
 Bonnie L. May  
 Ella Reffett Morrison  
 Richard M. Norman  
 Phyllis Power Owen  
 Mr. & Mrs. James Patrick  
 Joseph N. Patterson  
 Ronald Wayne Patterson  
 Delores R. Pennington  
 Mr. & Mrs. Ronald Earl Reed  
 Daniel J. Rivard  
 Thelma Theora Roe  
 Phyllis Anne Rueppel  
 Louise Fryman Salyer  
 C. Dale Sexton  
 Wayne Leslie Sloan  
 Marcia Palmer Smith  
 Mr. & Mrs. Kenneth A. Starnes  
 Clyde Stewart  
 Carl R. Stiles  
 John R. Stivers  
 Kenneth Storer  
 Dolores Callahan Swanson  
 Linda Titus  
 Larry & Penny Vincent  
 John L. Wells  
 Clyde Whitt, Jr.  
 Thomas W. Wilson  
 Byron Wisecup  
 James B. Young

1967

Nick Augustino  
 William George Aukerman  
 Nancy Sims Austin  
 Paulene Bihl  
 Jim Bishop  
 Joyce Snapp Bishop  
 Charles E. Bolden  
 Michael Bowman  
 Charles D. Boyd  
 Patricia Joy Bozorgas  
 Janice Houck Burge  
 Karen Rae Bussey  
 Betty B. Caldwell  
 Carolyn Braden Campbell  
 Mitchell Thomas Campbell  
 John L. Cantrell  
 John Capelle  
 Marilyn Jean Cassity  
 Riley E. Caudill  
 Vonda Lay Chaffins  
 Larry Chinn  
 Mr. & Mrs. R. Lance Clanton  
 Jordan B. Clay  
 James Click  
 Thomas J. Cook  
 Gary Michael Courtwright  
 James Andrew Craft  
 Howard Houston Curtis, Jr.  
 Joe Dangler  
 Michael Dewan  
 John Douglas Evans  
 Marion Jeanette Fannin  
 Linda Rice Ferguson  
 Sara Ford  
 Ernest Francis  
 Robert S. Gally  
 Mr. & Mrs. Ira C. Gayheart  
 Corwin Augustin Georges, Jr.  
 Randy H. Greene  
 Sally Greene  
 Elizabeth M. Greenhill  
 Lovell Grizzle  
 Marquetta B. Gully  
 Sandra Ritchie Hall  
 Harold Handy  
 Linda Kaye Harness  
 Judith Dotson Harris  
 James Hughes  
 Bonnie Lustic Jones  
 Richard J. Kasper  
 Jackie Lee Kegley  
 Connie Killion  
 Columbia Ferrell Kirk  
 Anna Ruth Lewis

Phyllis Osborn Lykins  
 Susan Alene Lyons  
 Andrew Martain  
 Michael J. Mauk  
 Joseph Thomas McCane  
 Mary Elizabeth MsDavid  
 Ronald McMackin  
 Sarah James Mercer  
 Elizabeth E. Miller  
 Martha Miller  
 Wanda Major Miller  
 Dorothy Young Mills  
 Boyd Miracle  
 Addie H. Mitchell  
 Paul Moore  
 Eugenia Snyder Morgan  
 Thomas D. Morgan  
 Mildred Mullins  
 Chrystal Brown Nelson  
 Edward Newcomb  
 Patty Blankenship Null  
 Clifford Gary Nusbaum  
 Ann E. Oppenheimer  
 James W. Parsley  
 John V. Patwell  
 Donald Payne  
 Terrance J. Peters  
 Mr. & Mrs. William Peters  
 Robert L. Petty  
 Sylvia S. Pfaff  
 David William Phillips  
 Gary Phillips  
 Suzanne Ebersold Pierce  
 Sharon Elaine Plank  
 Carol Nowacki Pratt  
 Fred Michael Prumo  
 Marie Janice Rath  
 Scott R. Reddick  
 Jonathan Stephen Rice  
 Robert C. Rucker  
 John Michael Rudowski  
 Charlotte Kegley Sabie  
 Philip Edward Salisbury  
 Alan W. & Sally K. Seigel  
 Michael Mark Simmons  
 Harold Stone  
 Thelma Anderson Stone  
 Jean Smetana  
 Rosemary Holbrook Smith  
 Sandra G. Smith  
 Anita Conley Snyder  
 Nancy Alice Spray  
 Virginia Criswell Stapleton  
 Stephen L. Start  
 Mr. & Mrs. James Stevens  
 Allen W. Stigen  
 Roland P. Stockland  
 Sharon Conley Stone  
 Michael McComas Sturgill  
 Shirley Gayle Thompson  
 John Martin Tomlin  
 Joe Toy  
 Jayant Tulaydhan  
 Charles Walker  
 David Lee Waller  
 Rita Diane Waller  
 James H. Watson  
 Beverly Gail Wells  
 Darrell Wheeler  
 Shirley Robinson Whitt  
 Sue Williams  
 Louis Wojcil  
 Gary Yarus

1968

Roger L. Adornetto  
 Edward C. Andres  
 William T. Bailey  
 Myrna Bernstein  
 Rita Bevins  
 Gary Blythe  
 Luna Joyce Booth  
 Bonnie Bellamy Bowling  
 James M. Bowling  
 Ronald W. Breitfelder  
 Eugene Joseph Brindise  
 Judith Brumbaugh  
 Lou Ann Bryant  
 Allyn D. Buckner, Jr.  
 Lawrence Q. Burgess  
 Catherine Caskey  
 Joseph M. Caudill  
 Annah May Chambelon  
 Karen Clark  
 Sigle Jayson Cline  
 Thomas Lee Close  
 Gaylord Coffey  
 Michael Collins  
 Patricia J. Collins  
 Jerry Lee Colvin  
 Larry Colwell  
 Peter E. Conlon  
 Patricia H. Dailley  
 Robert P. D'Andrea  
 Arthur B. Dayton  
 Donald C. Declerco  
 Sabatino Demarino  
 Stephen Digiovanni  
 Robert G. Dolgoff  
 James Kenneth Dowdy  
 Richard F. Drab  
 Willie Mae Dukes  
 Michael M. Dunbar  
 Larry T., Dunn  
 Jack I. Edelman  
 Ira E. Eggleton  
 Joan M. Eggleton  
 John Tobitt Elder  
 Von S. Elkins  
 Norman N. Engell  
 Juanita C. Everidge  
 Thomas E. Eyerman  
 Margaret L. Fain  
 Donald R. Fannin  
 Elizabeth M. Flashner

Constance A. Ford  
 Paul L. Ford  
 Mr. & Mrs. Ray Fox, Jr.  
 Patrick E. Gantley  
 Patricia S. Giannelli  
 Richard P. Gibson, Jr.  
 Georgianna Glass  
 David M. Greco  
 Arnold R. Hall  
 Sara Hall  
 Carolyn Diane Hamblin  
 Arthur Stephen Hardyman  
 Rebecca Cassidy Harless  
 Rita Chapman Harrison  
 Patricia Lynn Hill  
 Ida Hall Hinson  
 Phillip F. Hock, Jr.  
 Anthony Holbrook  
 Linda May Hopkins  
 Dwight Gordon Horn  
 George Ray Howard  
 Billie Fluty Hunt  
 Ronald Lee Hurt  
 Jerry Ronnie Hutchinson  
 Blanche Cluxton Ingram  
 Floyd E. Jackson  
 Thomas F. Jankunas  
 Michael Vayden Jenkins  
 Linda Jennings  
 Frances Walker Johnson  
 John E. Jones  
 Marcella Jones  
 Wayne C. Jordy, Jr.  
 Robert Anthony Keathley  
 Mr. & Mrs. Richard M. Kerestian  
 Eva L. King  
 Sue Ella Kobak  
 Joseph Kydon  
 Ronald Lamagna  
 Anamary S. Langley  
 John P. Lauri  
 Jeanette Clarkson Layman  
 James David Litteral  
 David C. Lower  
 Michael G. Lynn  
 David Earl Marsh  
 Abbie Lynn Martin  
 Sharon Kay Martin  
 Charles E. May  
 Charles R. Mays  
 Cheryl Porter McConnell  
 Russell McCoy  
 John T. McGovney  
 Steven Douglas Meade  
 Arlene Francis Miller  
 Jackie Carol Montgomery  
 Billie T. Moore  
 Mr. & Mrs. William A. Nelson  
 Donald Charles Nemes  
 Diane M. Nothangel  
 James W. Oakes  
 Leva Sharon Osborn  
 Dennis Clifford Osborne  
 Paulette K. Osborne  
 Thomas Peter Oukes  
 Ruth Ramona Peck  
 Pamela Petryl  
 Mary Frances Pinkerton  
 Richard Charles Platek  
 Clifton Peo, Jr.  
 Shelby Jean Potter  
 Joy Stokes Powers  
 Ilene Prater  
 Edward J. Raczka  
 Betty L. Ramey  
 Sharon Aurelia Reece  
 Charlotte Mae Reid  
 Harold Duran Reynolds, Jr.  
 Dale Stephen Rhea  
 Sonza Gail Ritchie  
 Corbett Ritchie, Jr.  
 Chalmer Kermit Robbins  
 James Douglas Ross  
 Gene Rothman  
 Ada Lee Salisbury  
 William Terry Salisbury  
 James G. Shively  
 Mary K. Stone  
 Patricia Kay Spangle  
 David Spears  
 James P. Spurling  
 Barbara Starr  
 Wilbur J. Stockland  
 Larry Burns Sturgill  
 Donney Lee Sullivan  
 Teddy R. Sullivan  
 Gary Lee Symonds  
 Henry L. Tackett  
 Lynn R. Tackett  
 Patrick F. Taricone  
 Kathy Bailey Tarry  
 David N. Taylor  
 Harold W. Thomas  
 Jacqueline Thomas  
 Leeann Opal Thomas  
 Geneva L. Thompson  
 Sandra Compton Thornbury  
 Stephen F. Tremel  
 Ellen T. Tufts  
 Robert S. Tufts  
 Paul H. Utter  
 Ferdinand R. Vecchione  
 Peggy Ranier Vital  
 Mr. & Mrs. Mitchell B. Walker  
 John Webb  
 James G. Weitkamp  
 William J. Welch  
 Isaac Appleman Weldon  
 Nicholas T. Weldon  
 Vickie Halfhill Whitmore  
 Mr. & Mrs. Paul A. Wieseman  
 Douglas M. Willis  
 Barbara J. Wilson  
 Curtis Allen Wilson  
 Nellie Anita Wilson  
 Helen Conn Wooley

Margaret Ann Yonts

1969

Barbara Jean Anderson  
 Linda Barker  
 Wanda P. Bartlet  
 Mr. & Mrs. Ronnie G. Bartley  
 Burt Francis Batty  
 Karen Buckler Baum  
 Carolyn Jean Beasley  
 Donald Lee Backman  
 Phyllis Ertel Betz  
 Thomas Allen Bise  
 Janet Barker Bishop  
 Mr. & Mrs. Paul Bishop  
 Robert Sherrill Boggs  
 Robert Lawrence Bogin  
 Virginia Rose Brajner  
 Amos L. Brashear  
 Sylvia Brown  
 Mr. & Mrs. Jerry W. Bruncker  
 Anthony V. Butler  
 Thomas O. Calvert  
 Bernice Pitts Campbell  
 Mr. & Mrs. Robert B. Cambell  
 Edward William Casey  
 George H. Childs, Jr.  
 Penny Coleman Chilton  
 Karen Cline  
 Mr. & Mrs. Melvin Coen  
 William M. Cooksey  
 Mary Ellen Cooper  
 Hazel Ruth Craft  
 Edward Lee Crisp  
 Roy J. Cunningham  
 Edward Dale Daniels  
 Bonnie Corum Dearing  
 Bobby Deaton  
 Susan Renegar Dehart  
 Pamela Anne Dobbins  
 Timothy Warren Downey  
 Patsy Fultz Duvall  
 Richard Danny Eblin  
 Sharon Kennard Esham  
 Mr. & Mrs. Carrol Estep  
 Nancy Lee Fannin  
 Michael D. Ferguson  
 Richard Hampton Fisher, II  
 Claude W. Frady  
 Jo Anbn Fraley  
 Beverly J. Franklin  
 James Lamarr Frazier  
 Paula Risner Galbreath  
 James Mason Gallaher  
 William Michael Gasser  
 Bennie Gibson  
 Carolyn Butler Gillum  
 Donald Lowe Glass  
 Linda Chapman Griffith  
 Stephen Robert Gurin  
 Martha Louise Haich  
 Elizabeth Gene Hale  
 Donald Wayne Harris  
 Minnie Fugett Hill  
 Roy K. Hill  
 Patricia Stephens Hofacker  
 Terry Lee Hoffman  
 Bruce E. Hogg  
 Sherrill Smart Holt  
 Deberah J. Honeywell  
 Carol Jean Howell  
 Judith Kay Hunt  
 David Hunter  
 William P. Isbir  
 Barbara Sue Jackson  
 Kenneth Jerich  
 Barry Lynn Jordan  
 Dennis J. Judge  
 Bernard Frank Kenner  
 Jack Boyd Kirtland  
 Dennis M. Krompascik  
 Lyn P. Lacock  
 Michael Earl Leiwig  
 Gary F. Levy  
 James L. Lincoln  
 Leslie M. Little  
 Gordon Daniel Long  
 James W. Lukens  
 Gloria Henry Maddix  
 Patricia Souder Main  
 Roger C. Marshall  
 Paul Anthony Martin  
 Carolyn Maxine Matthews  
 Asa Fariol Mayse  
 Donna Castle McCarty  
 Barbara Houser McDonald  
 Frederick Lawrence Miller  
 Wanda Justice Moore  
 Patricia Wade Morris  
 Carlos G. Morrison  
 Ahmad Reza Nazari  
 David Christopher Norman  
 Maureen Elizabeth O'Meara  
 Tennice Elene Painter  
 E. T. Parker, II  
 Marylou Partee  
 Sharon Key Patton  
 Constance Chandler Pettry  
 Elizabeth Elaine Phillips  
 Capt. Jonathan R. Phillips  
 David John Piersol  
 Nancy Lynn Porter  
 Rita Simmons Preston  
 Timothy Lee Pulem  
 Ali Raiszadeh  
 Larry Ratliff  
 Donald Russell Rawlings  
 Robert J. Richards  
 Jerlena B. Riley  
 Mr. & Mrs. Ronald Lee Rupp  
 Terry Lee Rusche  
 Mr. & Mrs. Phillip S. Sanders  
 Harue Sano  
 David Early Scheurich  
 Susan Virginia Shank

Elizabeth Clark Singholka  
 Connie Blankenship Slone  
 Edward I. Smookler  
 Richard A. Snyder  
 Billie Lou Spencer  
 Betty Ann Staton  
 Louis M. Steward  
 Marilyn Justice Steward  
 David R. Strickland  
 Glenda Sue Tackett  
 Mr. & Mrs. Robert Michael Taylor  
 Sue Buckley Thacker  
 James J. Thomas  
 Rose S. Thomas  
 Terry Robert Toles  
 Alan Charles Tongret  
 James Robert Ulp  
 Deloras Reeves Vahising  
 Peggy Hilton Valdes  
 James E. Van Over  
 Judgee Cornette Vanderpool  
 Eva Drake Waldrige  
 William Warth  
 Patsy Loy Webb  
 William Dan Webb  
 Donald B. Whitt  
 Shirley Ann Wichmann  
 Hope Anne Wigand  
 James R. Williams  
 Katherine Thompson Williams  
 Karen Kay Willis  
 Judith Barbara Winters  
 Wanda Worley  
 Heinrich J. Zehetmaier

1970

A. Karem Adibpur  
 Donna Carol Arnett  
 Donna Sue Belew  
 David E. Bradley  
 Peggy Hopkins Brewer  
 Dintel Roy Brown  
 Noel Michael Burcham  
 Thomas F. Burkhardt  
 Richard A. Calvert  
 Carolyn Turner Camp  
 Mr. & Mrs. Darrell Carter  
 Ruby V. Carter  
 Salvatore F. Catalano  
 Hobert Caudill  
 Judith Yvonne Chandler  
 Michael Chris Chapman  
 Mereda Faye Collins  
 Larry Winfred Compton  
 Glenlyn Ann Conley  
 Jennifer Biggs Conover  
 Barbara P. Corbitt  
 Mr. & Mrs. Howard Corcoran  
 Edgar Darrell Cornett  
 Lois Inez Cox  
 Kathy Crawford  
 Marcene Casebolt Culbreth  
 James Ellis Dash  
 Madonna Davis  
 Charles E. Deaton  
 Jane DeLong  
 Dick Digiacomo, Jr.  
 Thomas M. Dominique  
 Timothy E. Drake  
 Linda Murphy Durham  
 Joyce B. Ellis  
 David Tyrone Ercole  
 Nancy Cook Farley  
 Mr. & Mrs. Ronald Lee Felty  
 Ralph Benton Felty, Jr.  
 R. Robert Ferguson  
 Martin J. Finklestein  
 Karen Sue Flora  
 Christine L. Fox  
 Jeffery Russell Fox  
 Billy J. French  
 Carroll Hampton French  
 Linda S. Fries  
 Mr. & Mrs. Harold Stanley Fry  
 Robert Wells Gandy  
 Danny N. Ginter  
 Eugene Gray, Jr.  
 Ronald L. Greene  
 Sandra Mabe Greer  
 Martha Leigh Hall  
 Bic Hamlin  
 Janet Yvonne Hancock  
 Linda Kleiss Hanewinkel  
 Carlos Eugene Haney  
 Tanna Lee Harding  
 Jane Elizabeth Hinton  
 Charles L. Hocker, Jr.  
 Emma Rebecca Hogge  
 Larry M. Horn  
 Tomma J. Howard  
 Mr. & Mrs. Willie D. Jackson  
 Portia S. Jones  
 Shirley Pollirr Jones  
 Marie Blendinger Jump  
 Sandra M. Keck  
 Linda Townsend Kendall  
 Thomas William Kennedy  
 Suzanne Kenney  
 Raymond D. Kirk  
 Danny E. Lacy  
 Lloyd E. Lacey  
 Charlotte L. Landreth  
 David Aubrey Law  
 Mariem Carolyn LeForgee  
 John Litton Doris Marie Ludwick  
 Bruce Stephen Mac Farlane  
 Diane Ballay McEachron  
 Barbara Molinar McKee  
 Betty Caudill McKenna  
 Mary Crawford Miller  
 Mr. & Mrs. David Murray  
 Elizabeth K. Newman  
 J. Michael Noyes  
 Don H. Pence

2 LT. Gustof A. Persson, III  
 Mr. & Mrs. Edward P. Phillips, II  
 Gary Phillip Poynter  
 Gerald Quinlan  
 Catherine A. Rachford  
 Arlan Paul Ratliff  
 Glenda Hawkins Ratliff  
 George Reuthebuck  
 Robert Joseph Richmond  
 Charles M. Robertson  
 Jo Hunter Roe  
 James Reed Roper  
 Josephine Greear Rose  
 Mr. & Mrs. John F. Rowe, Jr.  
 Pauline Salyer  
 Clifton Lee Salyers  
 Karen Dance Sandoval  
 Sam Henry Schafer  
 Larry B. Seawald  
 James E. Van Over  
 Margaret Eileen Songer  
 Marilyn A. Stalmack  
 Sharon K. Stanley  
 Myrna Streitenberger  
 Helen C. Sullivan  
 Linda Steck Swiger  
 Barbara Nell Tackett  
 Dorothy Pelphry Terry  
 Loia C. Thomas  
 Mary Ann Thompson  
 Ethel Francis Thornbury  
 Mr. & Mrs. Ronald W. Tierney  
 Charlotte Landreth Verville  
 Thomas Keith Wagoner  
 Edsel Wallen  
 Rita Spears Webb  
 Linda Mastin Webster  
 Edith L. Weddington  
 Anna M. Wells  
 Richard Paul Wheeler  
 Lois Benham White  
 Teresa Herron Weidersatz  
 Ben L. Williams  
 Dr. & Mrs. Robert S. Williams  
 Donna Kittle Williamson  
 Richard C. Wilmhoff  
 James Carroll Wilson  
 James Charles Wilson  
 Joan Wiley Works

1971

Laverne Belcher Adams  
 Beverly Woods Allen  
 Rondell Banks  
 Larry O. Barker  
 Mr. & Mrs. Ronald Keith Bennett  
 Sharon Kay Bowles  
 Robert Lynn Branham  
 Carroll Browning  
 Margaret Curran Bryant  
 Christine Ann Buelterman  
 Phyllis Gabbard Bullock  
 Phil Clyburn  
 Kayrene Collins  
 Mr. & Mrs. Keith Cornett  
 Terry A. & Kathleen Cox  
 Constance Frederick Crosby  
 Joseph Deluca  
 Barbara Ann Dickerson  
 Virginia Stanley Doyne  
 Becky Kay Duduit  
 Donnie Durham  
 Sharon Fitzwater Edington  
 Stanley C. Ferguson  
 Phyllis Davis Fisher  
 Juanita Hayward Flick  
 Nancy Jean Franklin  
 Judy Kay Freeman  
 Dr. John P. Gearhart  
 Sandra Burke Gillum  
 Robert A. Gray  
 Mr. & Mrs. Charles T. Griffith  
 Donald Lee Hackney  
 Mr. & Mrs. Thomas Charles Huckleberry  
 Rebecca Wilson Hutton  
 Wilma Johnson  
 Fronda Mae Kellum  
 Margaret Ann Kenner  
 Mr. & Mrs. John M. Kenney  
 Carole Lee Kernohan  
 Deborah King  
 Donald Richard Lacy  
 Penny Sue Lanich  
 Patrick A. Legg  
 Barbara M. Martin  
 Janie Jett Mason  
 Clyde Mays, Jr.  
 Kevin A. McCarthy  
 Judy Ann McNeas  
 Edward Charles Mignery  
 Janice Fuhrer Mynhior  
 Inez Wade Newman  
 Sydney Colley Nolty  
 Raymond Nurse  
 John O'Malley  
 Thomas Leslie Orcutt  
 Plina Lou Parker  
 Louis Peter Pellegrino  
 Ruth Parks Pigman  
 Ronald G. Preece  
 Catherine Irene Preston  
 Lelsie Ann Quillian  
 Dennis Craig Reed  
 Jeanetta Lynn Rice  
 Mr. & Mrs. William Bailey Rieger  
 Franklin Eugene Roberts  
 Gary Lee Rogers  
 Margaret Clifford Rogers  
 Mr. & Mrs. Morteza Sabouivchi  
 Luther S. Safriet  
 Connie Alexander Sargent  
 Judith Ann Shields  
 Mr. & Mrs. Charles A. Stagge  
 Dana L. Stamper

Mr. & Mrs. Edwin Stewart  
Stephanie Turner Stewart  
David S. Stone  
Ora Elizabeth Taylor  
Guthrie G. Thompson  
Merrell Douglas Thompson  
Glenn Tyra  
Ahmad Hedayat Vatandoost  
Mr. & Mrs. Bradley M. Vice  
Mr. & Mrs. Timothy Lowell Walker  
Wayne S. Warren  
William B. Weedman  
Jackie Edwards Wheeler  
Carolyn Upchurch White  
Ruth Marlene White  
Paula Elizabeth Wichmann  
Wesley Wiggins  
Linda Lou Wilson  
Barbara C. Wilt  
Dorita Coblenz Wise  
Beverly Sue Woods  
Deborah Beeding Youell  
Gary Kenneth Young

## 1972

Donna Mae Adams  
Melva Lee Adams  
Norma Cornette Adams  
Robert R. Adams  
Mr. & Mrs. K. Dale Adkins  
Wilma McClure Adkins  
Roger Dale Amburgey  
Ann Duke Anderson  
Shron Willis Arline  
Pamela B. Armstrong  
Ronald Lee Ashworth  
Boneva Willis Back  
Kenneth Back  
Ronnie Harold Back  
Barbara Ann Bahoosh  
James Robert Baker  
Pam Wilson Baldridge  
Frank Barnett  
Donald G. Barney, Jr.  
Phyllis Marie Beamon  
Ronald Alvin Bertram  
Thomas Eugene Beschler  
L. Michael Bihl  
Mr. & Mrs. David Chester Birch  
Fonetta Akers Blackburn  
Nadine Keathley Blankenship  
Malcolm Alphonse Blount  
Janet Sue Bonfield  
Mr. & Mrs. David R. Bostleman  
Sharon Royster Bramblett  
Carolyn Sue Brandt  
Debra Coyer Bratcher  
James Edward Bruan  
Mr. & Mrs. Alger Bart Breeding  
Mr. & Mrs. Robert A. Brewer  
Capt. Clyde D. Brown  
Lawrence Glenn Brown  
Connie Jenkins Browning  
Gregory C. Bulluck  
Boneta Sue Burton  
Jerry Wendell Butler  
Delois Derossett Calhoun  
Mary Cameron  
Johnnie C. Canada  
James Michael Carpenter  
Roberta Hough Caudill  
Irene Hunt Centers  
Carloyn Sue Chaffin  
Barbara Poloskey Chandler  
Betty Sue Clark  
Mike G. Clevenger  
Gregory A. Collinsworth  
Michael Kent Conley  
John Mark Cooper  
Bruce Foster Crawford  
Mary Davis Crowe  
Charles Edward Cummings  
Martha Louise Daniels  
Paul David Davis  
James W. Davis, Jr.  
William Debord  
Gregory Lee Dehart  
Capt. & Mrs. David P. Dekorte  
Mr. & Mrs. Michael Ray Delawder  
George P. Derifield  
Regina Sue Dove  
Clyburn Duder  
James Cureton Dunnett  
David Durall  
Mary Josephine Elam  
Jinx Yvonne Elkins  
Bobby Dean Estep  
David Dallas Etchison  
Domenick Falconetti  
Gary L. Fannin  
John F. Fearnow, II  
Junice Whitt Fields  
Pamela Trusedell Fields  
Robert Lee Fisher  
Dennis Michael Flack  
Liza Ann Fleming  
Linda Howard Flynt  
Candace Nunn Forbes  
James A. Forbes  
Brenda J. Fulkerson  
Lara Green Gahafer  
Shelia Carol Gilreath  
Delores Puckett Goldsberry  
Mr. & Mrs. Dennis Gray  
Doris Jane Gray  
Mr. & Mrs. Lawrence Grazizni  
Pamela Scott Grooms  
John Kent Guy  
Gretchen Nelson Hale  
Ellen McWhinney Hall  
Glenna Christman Hall  
Nora L. Hall  
Lavaughn Lee Hamblin  
Raymond Hampton

Larry Hamrick  
Shirley Elaine Hardin  
Jacqueline Marie Hardy  
Mary Sue Harmon  
Ralph Michael Harper  
Gloria S. Harrell  
Diane Rebecca Hawker  
Hal Jay Haymaker  
Lana Lou Haymaker  
Mr. & Mrs. Barry Lyle Hays  
Karen J. Hilton  
Teresa Lynn Holley  
Danny Lee Hollon  
Gary Lee Hollon  
Carol Allen Hoskins  
Rita Doan Houston  
Russell Walter Howard  
James W. Hudson, Jr.  
William D. Huff  
Robert E. Hughes  
Mr. & Mrs. Thomas R. Humbard  
Ralph E. Hunt  
Joan Louise Jacoby  
Susan Ann Johns  
Betty Mirand Johnson  
Billie Johnson  
Sgt. Larry P. Johnson  
Mark Firth Johnson  
Willie Millard Johnson  
Glenna Claire Just  
Frank Edward Kees  
Patricia Butler Kees  
Jerome Dale Ketchum  
Kenneth Brian King  
Sandra Lorraine King  
Robert Henry Kinzel  
Phillip Kirk  
Mr. & Mrs. Paul Fernando Lagos  
Barbara Liles Lands  
Elizabeth Ann Latham  
Barry Lee Laurinavich  
Linda McKee Lawler  
Lillian Louise Lawson  
David Kenneth Lee  
Gloria Bailey Lennon  
Bernie Wilmer Lewis  
Ronald Edward Little  
Robert Darrel Looney  
Sandra Michele Lovely  
Rita Lavon Malone  
Glenda Thomas Martin  
Peggy Martin  
William Alan Matthews  
Don. E. McClurg  
Sue Frisloe McGovney  
Mr. & Mrs. Randolph T. McKenzie  
Gary Lynn McKinney  
Leola Bowman McQuinn  
Marvin Boliver Meade  
John Douglas Moore  
Deborah Lacy Morgan  
Michael Anthony Moss  
Elgin White Murphy  
Mary Francis Murphy  
Michael John Murphy  
Alan Stephen Nogiec  
Mark Kevin O'Keefe  
Larkin Benjamin Oliver  
Sharon Lee Paper  
Phyllis Murphy Paul  
Charles Franklin Payne  
Janis Mae Pearson  
Jacqueline Perkins  
Kenneth Michael Peterson  
Camilla Kegley Phillips  
Rita Endicott Phillips  
James Warren Poe  
Dean Emmett Pore  
Kenneth Perry Preston  
David Charles Ratliff  
Regina Vice Reeves  
Gloria Sestili Reynolds  
Elaine Bagford Rhule  
Mr. & Mrs. F. Keith Richerson  
Judith Ann Riddell  
Charles Leslie Rider  
Joseph Samuel Roberts, Jr.  
Deborah Sue Robinson  
Georgetta Prather Rollins  
Larry Douglas Rollins  
Evelyn Brown Rose  
Abbas Salamat  
Modena Salyer Sallee  
Richard Wayne Sallee  
Peggy Clevinger Sanders  
Christine Lee Schramm  
Timothy Robert Scribner  
Mary Stephanie Serafini  
Michael Foriest Settles  
William Calvin Settles  
Beverly Holthaus Sheets  
Corinne Short  
William Paul Skeans  
Harold Robert Smith  
George R. Stamper  
Judith Ann Stanforth  
Donna Carol Stapperfenne  
Mr. & Mrs. Keith G. Stewart  
Feryn J. Stigall  
Muerlyn Deholas Stigall  
Donald Allen Storer  
Mr. & Mrs. James T. Stratton  
Eugene Thomas Strode  
Janet Irene Summers  
Carole Lynn Swayne  
Terry Lee Teegarden  
Patricia Chandler Tharpe  
Daniel Lee Thompson, Jr.  
Debby Denny Titlow  
Joe Rogers Trabue  
Charles Wallace Turner  
John Wayne Tuttle  
Sharon Marie Tuttle  
Jon Alan Vincent  
Carl K. Wainscott  
Howard Craig Wallace

Kathleen Walker Warren  
Michael Dawson Warren  
Linda Carol Watts  
Cecil Ray Wayman  
Mr. & Mrs. Timothy Patrick Wayt  
Ronald Arthur Weber  
Maurine Joan Welsh  
Carman J. White  
John K. Williams

## 1973

Judy L. Adkins  
Donald E. Alt  
Linda S. Amburgey  
Michael W. Anderson  
Winnie J. Arnett  
William Arrowood, Jr.  
A.M. Babaloradi  
Robert K. Ballard  
Mamie Holbrook Banbel  
Dominec Bellissimo  
William F. Bostleman  
Capt. Bruce Alan Boulton  
Dorothy Taulbee Bowling  
Winifred Dutton Bradley  
Lania Gayle Bryant  
Kent L. Bryson  
Gerald Louis Burger  
Geri Campbell  
Rosemary Carlson  
Mr. & Mrs. Lawrence D. Carman  
Linda J. Caskey  
Paula Prince Caskey  
William Cason  
Mr. & Mrs. James W. Cassity  
Mr. & Mrs. Frederick A. Caudill  
Jannie Hewetson Caudill  
Lana Sutton Combs  
June Page Cook  
Mr. & Mrs. Christopher A. Cooley  
Mary C. Couch  
James P. Coyle  
Betty Jane Currie  
Diana Laura Cutright  
Gloria A. Dale  
Ronald C. Damron  
Bonnie London Daughtery  
Glenis C. Dean  
Juliana Deaton, Jr.  
Yuth Dejmarone  
Deanna S. Dibella  
Mary Shannon Doyle  
Carolyn S. Drake  
Ralph E. Dunlap  
John W. Durbin  
Winifred A. Dutton  
Kathleen S. Egleston  
Michael E. Elliott  
Margaret Rose Ellison  
Derl L. Everman  
Joel A. Ewing  
Lois Taylor Ficarro  
Frederick W. Fiebigler, II  
Laura L. Fisher  
Ralph E. Frazier  
Mr. & Mrs. Jack Friedman  
Jerry A. Fultz  
Deborah Sellmeyer Funk  
John D. Gaines  
Mr. & Mrs. Stephen R. Gerrard  
Randy D. Glass  
Mr. & Mrs. Ralph Gossett  
Drema Dawn Hager  
Robert D. Haggstrom  
Carol Lynn Hamm  
Mildred Marie Hamm  
Deborah G. Hampton  
Karen Compton Hatton  
Lee Hay  
Joseph P. Hayes  
Keith D. Haynes  
Sister Julia Marie Head  
Bobetta Jo Helem  
Judy L. Helphenstein  
Kathy Smiley Helton  
Glenna Scott Henry  
Mary H. Herald  
Christine Bernice Hockenberry  
John William Hollenbach  
Brenda K. Howard  
Laine E. Howard  
Rita Gregg Jarvis  
Vicki L. Johnson  
Hosea Johnson, III  
Bryan Lee Jones  
Elizabeth D. Jones  
Elizabeth Jeanette Jones  
William Lynne Jones  
William A. Jones  
Robert Kelcy  
Daniel L. Kidd  
Gary D. Layne  
Denise E. Leblanc  
Jane Heekin Lotton  
John J. Lysien  
Jackie R. Martin  
Susan Doseck Mason  
George William Mason, Jr.  
Gary R. May  
Michael W. May  
Ben Henry McGuire  
Gary R. McGuire  
Johnny Mac McGuire  
Mary Linda McKinney  
Phillip Ray McNally, Jr.  
Russell D. McStoots  
Martha Jan Maebon  
Karen Fletcher Merritt  
Ethel J. Mills  
2nd Lt. Don Minto  
Richard M. Moon  
Donna Perry Morgan  
Carla Patterson Mouser  
Deborah Adkins Murray

Marcha G. Myers  
David Roy Nygie  
Freddie Newsome  
Sallie Stumbo Nickell  
Robert Michael O'Mara  
Sa Njuan Ongsrilool  
Joyce A. Osborne  
Patty D. Owens  
Claire Perdue  
Donald Peters  
Pamela Ann Peterson  
Thongkum Phadoongsook  
Carole Pleasant  
Danny E. Potter  
Sharon K. Potter  
Donald T. Powell  
Richard A. Powell  
Garrett Monroe Powers  
Dennis Leslie Probst  
Roy Neil Ransom  
Thomas J. Rath  
Linda K. Rayment  
Thelma T. Reed  
Brenda R. Roberts  
Michael H. Rorick  
Shelia K. Rose  
Frank Douglas Ross  
Nancy L. Ross  
Mr. & Mrs. Ronald A. Rossi  
David Mark Sageser  
Alan R. Salyer  
Regina Wilde Sandefur  
Doris A. Scilley  
Michael Owen Sexton  
Madolyn Wheatley Shippey  
Mr. & Mrs. Rex L. Shoemaker  
Ernest Slone  
Beverly Zanchetti Smith  
Janis A. Smith  
Kla Somotrakool  
Deborah Ruber Spaulding  
Shirley Ann Stapleton  
Lauren Prasek Stewart  
Andrea Leigh Story  
James P. Stowe  
Raymond W. Strawser  
James C. Strickland  
Judy F. Strong  
Kenneth M. Stutler  
Sthan Suwanra  
Daniel R. Swan  
Michael Lowell Swisher  
Althea Osborne Taylor  
Marianne Taylor  
Patsy Sexton Taylor  
Walter E. Thomas, II  
Roger Todd  
Dennis D. Tolliver  
Garry Tolliver  
Claris C. Turner  
Janet Lee VanHoose  
Barbara L. Vanover  
Elizabeth S. Vinciguerra  
Sally D. Virgin  
Robert E. Wallace  
Jill M. Wells  
Fred W. White  
Gary Gene White  
Lt. & Mrs. Marcus F. Wiley  
Felix G. Williams  
Patti V. Williams  
Mr. & Mrs. Roland E. Williams  
Linda Willoughby  
Chris H. Wilson  
Raymond L. Woolum  
Sabo E. Yakubu

## 1974

Mary Elizabeth Adams  
Teresa Ann Akers  
Katherine M. Anglin  
Edna E. Ashcraft  
Juanita Jewell Barker  
Robert Lee Barker, II  
Charles Michael Barnhart  
Raymond Michael Belknap  
Elizabeth Ann Bellan  
Renee Benhower  
Louis Patrick Bihl  
Berma Whitaker Blair  
Portia C. Blair  
Donna Campbell Blanton  
James Allen Bowling  
Robert Ray Bradley, Sr.  
Mickey Lee Bradshaw  
Gary Eugene Briggs  
Beverly Green Buckner  
Phyllis Newman Bunch  
Melissa A. Burgoyne  
Phyllis Long Burkett  
Janice Louis Burkhart  
Holly Ann Caruso  
Diane L. Casey  
Thomas Randal Chaffin  
Barbara Sue Coffey  
Arthur Dean Coleman  
Carol Elaine Coleman  
Janice Marie Coleman  
Phillip Ray Collins  
Randolph Day Couch  
Mr. & Mrs. David L. Cox  
James Darrell Craig  
Arnold Creech  
Gail B. Crow  
Barri Shreyes Dalton  
Shirley Puckett Davis  
Edgar Thomas Denton  
Susan E. Despain  
Kathy Lynn Dodds  
Charles R. Doran  
Gretta Wood Dotson  
Sandra Chalupa Douglas  
Arnold Lee Drury  
Daniel Lee Duncan  
Barbara J. Eiswick

David P. Everman  
Mary Ruth Faulkner  
Nettie Luvenia Ferguson  
Constance Marie Ferris  
Marietta C. Fish  
Mr. & Mrs. Carl Fleming  
Christine C. Forman  
Margaret Toby Fried  
Johnny A. Fryman  
Morris Bradley Gahafer  
Paula Jean Gibbs  
Pamela Bedell Gillum  
Janie Lawson Gover  
Michael Scott Gray  
Duane R. Greenly  
Debra Pack Grimm  
Mr. & Mrs. Brian Thomas Grothaus  
Linda Jo Habern  
James Dwight Hale  
Francis Marion Hall  
Sammy Hanshoe  
Barbara Ross Harris  
Jennie Moore Hawkins  
Gladys Marlean Herdman  
William Edward Hesch  
David A. Hillard  
John H. Hirschauer  
Susan M. Hubler  
William Ray Hudnall  
Wilma Sue Huffman  
John Mark Hume  
Ernest Dale Hunt  
Patrick Leonard Iarossi  
Leona Elizabeth Johnson  
Michelle Kay Johnson  
Mr. & Mrs. Albert W. Jordan  
Marie Baugess Jordan  
Kathleen Kay Kearns  
James Ward Kelly  
Joyce Ann Kennedy  
Richard Dennis Ketelhorn  
Saad Sbie Khamis  
Susan Joan King  
Marita Louise Kinnaird  
Carole Sue Kinnison  
Lydia Richmond Kirker  
Gail Anne Kowaleski  
John R. Lambert  
Mr. & Mrs. Jerry M. Lee  
Deborah Lynne Lewis  
Judy Nelson Logan  
Richard Thomas Lykins  
Bonnie June Mathews  
Denise Ann Matson  
Michael John Mattia  
Mitchel T. McCardwell  
Calvin Bruce McWhorter  
Rhonda Bevins Miles  
Sammy A. Miller  
Nancy Jayne Mills  
Rebecca Bauer Mills  
Cheryl H. Moore  
Pamela Lansdale Morton  
Debra Rae Mowers  
Scott Randall Grace  
Alvin P. Greathouse  
Buford J. Murphy  
Marlin Gene Nicol  
Wanda Lee Noel  
Elizabeth Hill Nunan  
Rebecca Mattingly Pack  
Wanda Sue Parke  
Carolyn C. Pennington  
Lillian Louise Plunkett  
James Andrew Porter  
Nina C. Poynter  
Judith Kaye Redman  
Linda Garrett Rice  
Robert William Richards  
Shelia Miles Robinson  
Delmar Roy Rogers  
Kim Douglas Rogers  
Saad Khamis Sabie  
Sharon Layne Sandifer  
Dale E. Sandlin  
Karen Endicott Sandlin  
Barbara A. Saunders  
Gary William Schearing  
Carol Hill Schmitt  
Mr. & Mrs. Robert F. Shearer  
Curtis Lee Shelton  
Jane Shafer Simmons  
Lawrence Graham Simpson  
Martha Bartos Skidmore  
Walter Scott Slone  
Betty Currie Smith  
Dana Ace Smith  
Denzil Smith  
Mr. & Mrs. Robert E. Smith, Jr.  
James Walton Spears  
Robert Vanhorne Spicer  
Kathleen O'Hara Stacey  
Mr. & Mrs. Joe D. States  
Mary Elizabeth Steffen  
Janet Lynn Stephens  
Kathy Lee Stowe  
Richard Lee Stultz  
Judy Baxter Tabor  
Steven Dwayne Tabor  
Lynette Taylor  
Mariam Jean Taylor  
Allen Edwin Taylor, Jr.  
Betty Arnold Thacker  
Bambi Lynn Thomas  
Thomas Madison Thompson  
James M. Thoroughman  
Nick Tsanges  
Sandra L. Turner  
Elizabeth Tutt  
Karen B. VanHoose  
Debra Eccles Vonallmen  
Stewart Vonallmen  
Steven Andrew Wade  
David Eugene Walker  
Lanny Joe Walters  
Eugene Lockhart Welsh  
Deborah Leforce Williams

Henry Mack Williams  
James Jay Williams  
Paula Ruth Williams  
Stewart Alan Williams  
Paula Lee Wilson  
Wylie Edward Wilson  
Jeffery Paul York

## 1975

Don E. Abshire  
Mohammed Adamu  
Bonnie Annis Adkins  
George T. Akers  
Mark Altenberger  
Mr. & Mrs. Larry W. Amburgey  
Howard Eugene Anderson  
John Wayne Back  
Shirley Stamey Barker  
James E. Bays  
Richard K. Beam  
Barbara G. Bentley  
Sharon Ann BERcaw  
Beverly Mann Blake  
Forrest C. Brown  
Fred Warren Brown, Jr.  
Robert Joe Burney  
Mary Fultz Cantrell  
Larry Arnold Carter  
Thomas Ray Castle  
Robert Bryant Chandler  
Carla Wan Chang  
Belinda E. Christian  
Mr. & Mrs. Douglas N. Church  
Thomas Allan Clark  
Hazel Price Clifton  
Judith Ann Combs  
Leland James Cook  
Susan Dohn Cook  
Cheryl E. Cornette  
Deborah Anne Danner, III  
Gary Russell Deaton  
Brenda Kay Deskins  
Janice Lee Doggett  
Julie Denise Draggo  
Janet Jones Dudley  
Linda White Duvall  
William James Dye  
Diane Dyer  
Hazel Gordon Dyer  
Linda Odden Dyer  
Jacqueline F. Evans  
Connie Ison Feaser  
Mary Odessa Ferris  
Cindy Lee Foster  
Claudia Jane Foulkes  
Frank T. Fugate  
Jessie Lynne Gabbard  
Leo Gayheart  
Leah C. Gee  
Susan Alice Gill  
Richard Vaughn Gorton  
Scott Randall Grace  
Alvin P. Greathouse  
David Scott Guiler  
Glenda Stanfield Guiler  
Linda Bilitier Hale  
Paula Patrick Hall  
Krista Lynn Hamilton  
Debbie Sue Hammond  
James Terry Harmon  
Kristine Othersen Harwood  
Linda Sue Hasenstab  
Bonnie Jean Hinkle  
Janice Pardoe Hinton  
Phillip Hoffman  
Sandra Lynn Holtzapfel  
Stanley T. Hoskin  
Delmar Roy Rogers  
Kim Douglas Rogers  
Saad Khamis Sabie  
Sharon Layne Sandifer  
Dale E. Sandlin  
Karen Endicott Sandlin  
Barbara A. Saunders  
Gary William Schearing  
Carol Hill Schmitt  
Mr. & Mrs. Robert F. Shearer  
Curtis Lee Shelton  
Jane Shafer Simmons  
Lawrence Graham Simpson  
Martha Bartos Skidmore  
Walter Scott Slone  
Betty Currie Smith  
Dana Ace Smith  
Denzil Smith  
Mr. & Mrs. Robert E. Smith, Jr.  
James Walton Spears  
Robert Vanhorne Spicer  
Kathleen O'Hara Stacey  
Mr. & Mrs. Joe D. States  
Mary Elizabeth Steffen  
Janet Lynn Stephens  
Kathy Lee Stowe  
Richard Lee Stultz  
Judy Baxter Tabor  
Steven Dwayne Tabor  
Lynette Taylor  
Mariam Jean Taylor  
Allen Edwin Taylor, Jr.  
Betty Arnold Thacker  
Bambi Lynn Thomas  
Thomas Madison Thompson  
James M. Thoroughman  
Nick Tsanges  
Sandra L. Turner  
Elizabeth Tutt  
Karen B. VanHoose  
Debra Eccles Vonallmen  
Stewart Vonallmen  
Steven Andrew Wade  
David Eugene Walker  
Lanny Joe Walters  
Eugene Lockhart Welsh  
Deborah Leforce Williams

**MOREHEAD STATEment page 19**

Judith Phillips Oliver  
Wendella Karon Osborn  
Helen Ruth Osborne  
Alfie Louis Plummer  
Vicki Sue Prichard  
Jana Lee Priest  
Patricia Jane Quinn  
Patricia K. Raines  
Susan Ann Rece  
Deena Webster Reeves  
Cynthia Ann Richards  
Elizabeth Eileen Richards  
Steven Charles Richards  
Thomas A. Richards  
R. Bruce Richardson  
Riccardo Andre Ridley  
Hildegard Clarke Ross  
Sharon Ryan  
Susan Bolt Salyers  
Mr. & Mrs. David L. Schaetzke  
Mark Harvey Schmutzler  
Tasanne Siengkong  
Candace Jill Sitzler  
Has Stone, Jr.  
Bernice Slusher  
Rick Allen Sparks  
Pamela Jane Staton  
Paul J. Stewart  
Lois Stinson  
Patricia Smith Stivers  
Angela Jane Strickland  
James M. Surber  
Mr. & Mrs. Bill W. Tabor  
Larry Edward Taylor  
Mr. & Mrs. Chester R. Thacker  
Ross W. Thompson, III  
Marla Haley Thoroughman  
Karen Haberman Trusty  
Darlene Faye Turner  
Sally Elaine Vandivier  
Mr. & Mrs. Roger Thomas Vergne  
Jennefer T. Waddell  
Jerry P. Waddell  
Judith Blevins Walker  
Preston L. Wallace  
Jeffrey Alan Ward  
Richard M. Webb  
Jim Wayne Welch  
Ronald Wellman  
Edward Arthur Welsh, III  
Debra Jeanne Whaley  
Frederick Lane Whitt  
Bill Wiglesworth  
Mr. & Mrs. Larry M. Wiley  
Anne Willis  
Dennis Jerome Wiwi  
David Allen Woodrow  
Linda Diane Young

**1976**

Charles Arthur Allen  
David A. Ammerman  
Samule Keith Amspaugh  
Jacqueline J. Augenstein  
Howard Michael Baker  
Judith Lynn Bangert  
Mr. & Mrs. Robb L. Barlow  
William Terry Barnard  
Deborah Ellen Barr  
Pamela Hall Bell  
Carl Gentry Bennett  
Doris Ann Bentley  
Vicki Frank Boggs  
Ronnall Gale Boggs, Jr.  
Patricia Darr Bond  
Christine A. Brieske  
Debra Crout Brown  
Margaret Jones Bryan  
Mark Alan Buckel  
Gayle Boyles Busby  
G. Harold Byers, Jr.  
Donna Lee Campbell  
Chester Casanave, Jr.  
Lorraine Wilson Cash  
Michael Russell Childers  
Deborah Ann Chittum  
Terri Rae Clark  
Larry Ray Clark  
Linda Ann Cochran  
John Dherman Conrad  
Daniel Lee Cooper  
Yvonne W. Cooper  
Mr. & Mrs. David William Cover  
Charles Stephen Craig  
Johnny Fearis Craig  
Kathleen G. Crawford  
Sue Ann Creamer  
Cynthia H. Crittenden  
Linda Fisher Davis  
Sandra Jucoff Davis  
Mr. & Mrs. Richard T. Dodd  
Judith Elizabeth Doggett  
Carol Lowe Donohue  
Wirt Rexford Duff  
Donna Elizabeth Durham  
James E. Eckerle  
Terry Denise Ellington  
Billy Joe Ellison  
Brenda Ann Ewald  
Larry James Fannin  
Ronald G. Fannin  
Kathy Lee Fergus  
Deanna Adkins Fidler  
Paul Eugene Fisher  
Timothy Paul Fleischer  
Cheryl Lynn Fowler  
Michael James Fralix  
Susan Espenschied Fritz  
Jacqueline Ann Gatliff  
Saronda Horne Gayheart  
Royce L. Gentzel  
Gary K. Gibson  
Richard Gilbert  
Robin K. Gillum  
Gary C. Gilmore  
Richelle Wheeler Greer  
Danny Ferrone Hamblin  
Mark Edward Hanby  
Walter Michael Hanks

Peter J. Hawley  
Teresa Michelle Haynes  
John K. Hershberger  
Hansford Lloyd Hill  
Mr. & Mrs. Karl G. Hop  
Pamela Dunn Jacobsen  
Roscoe Wilson Jenkins, II  
Darlene Musser Johnson  
Gail Blair Johnson  
James Paul Jones  
Nancy Kathleen Jones  
Donna Marie Lawrence  
Michael Warren Lundy  
Mary Jane Lynch  
Cynthia Jo Lyons  
Marilyn Davis Marriott  
Mr. & Mrs. Horace F. Marshall  
Patricia Mack Matthews  
Gladys Faye Maynard  
Peggy L. McGee  
Jeffrey Scott McKenzie  
Jacqueline Sue McKinney  
Martin Joseph Mencer  
Judith Bond Metcalf  
Lawrence Jay Mickelson  
David Darrell Miller  
Rondall G. Mills  
Russell John Moniz  
Maureen Regina Nagy  
Glenn D. Newman  
Lucille A. Orlando  
Dale Douglas Osborn  
George M. Osei  
Bonnie Snyder Pagan  
Mitchell T. Pennington  
Ronald D. Penrod  
Ronald Ernest Peterson  
Victor Wayne Pinion  
Debra White Plank  
Anthony L. Pollard  
Joseph Dale Porter  
Sheri Ann Prater  
Carolyn Marie Pyles  
Karen Ruth Raines  
Delbert Brent Renfroe  
Tommy R. Riddle, Jr.  
Virginia Ann Ritchie  
Barbara Carolyn Romeieh  
Gary Wells Ross  
Donald B. Royse  
Judith Gay Rueve  
Samuel T. Sanders  
Karen Sue Sargent  
Dora Kayrene Scalf  
Alma Sheryl Scott  
Rhoda Ann Scott  
Ponzell Shaver  
Barbara Anne Shear  
Rebecca Margaret Shouse  
Debra Fraley Simpson  
Carolyn Rochelle Sleeper  
Brenda Sue Stone  
Kerry Sluss  
Barry Damon Smith  
Betty R. Smith  
Dena Parsons Smith  
Judith Cropper Smith  
Stephanie J. Sorrell  
Darlene T. Spears  
Dale Lee Spracklen  
Fred Spradlin  
Samuel Scott Spradlin  
Jeffrey Parr Staten  
Lawrence G. Stewart, Jr.  
Kevin Wayne Taylor  
Wanda Johnson Teegarden  
Marilyn Kaye Thomas  
Terrence Kenton Tipton  
Aida Olinda Torkelsen  
Glenna Joyce Trent  
Deborah Faye Vinson  
John Neville Vivitoe  
LT. & Mrs. Steven E. Warner  
Richard Waters  
Jindra Lynn Wheeler  
Carol Sue Whitacre  
Charles David Wilson  
Shari L. Wilson  
Cynthia Carla Wilt

**1977**

Donna Powell Abdon  
Deed Adams, Jr.  
Lydia Oladimeji Adedibu  
Sam Steven Adkins  
Sharon Nadine Adkins  
Joan Aldridge  
Christie Maloney Arnold  
Patricia Watson Atkinson  
Sister Collette Bauer  
Robert V. Bellamy, Jr.  
Lawrence Ralph Biagi  
Donna J. Biggs  
Judy Carol Blackburn  
Jane P. Blocher  
W. L. Bostic, Jr.  
Vickie Raye Bray  
Barry L. Brewer  
Mr. & Mrs. Rocky Allen Burke  
Danny M. Burns  
Barbara L. Byers  
Betty Marie Cameron  
Eric Lynn Carlson  
Bobby Ree Caudill  
Freddie K. Caudill  
William E. Caudill  
Roberts S. Coburn  
Michael Douglas Collier  
Steve L. Coyer  
Brenda Mary Conley  
Deborah Lawson Cooper  
Henry C. Dade  
Kate Delehunt  
Randy Denney  
Lorna Georgene Detrick  
Dustin Scott Deyo  
Charlotte A. Dixon

**1978**

Myra Lynne Allen  
Susan Jo Allen  
Margaret Ensor Applegate  
Zahra K. Asgharzadeh  
Vicki Lynn Barker  
Kerby Collins Bastianelli  
Mr. & Mrs. David Kent Blackwell  
Daphne Blevins  
Nancy Bea Bradley  
Mr. & Mrs. Victor Kay Brickey, Jr.  
Catherine Ann Bush  
Rory Calhoun  
Jerry L. Cantrell  
Darrell Stanley Caudill  
Deborah Ann Caudill  
James Morgan Chapman  
Marianne D. Cheap  
Carole Stephens Chinn  
Wilbur Combs  
Constance F. Cookson  
Brian Keith Cooper  
Lynette Koppelman Curtis  
Paula J. Deeken  
David John Edberg  
Mehrzaad Etebar  
Roger D. Fannin  
Shelia Jean Fitch  
Bonnie Jean Franke  
David P. Frazer  
Janice E. Frazier  
John Gregory Frazier  
James Robert Funk  
Norvetta L. Garrett  
Patricia Diane Giese

James M. Doran  
Steven Drexler Dunn  
Lisa Ann Filichia  
Roberta Sue Finfrock  
Linda Blades Fooks  
Betty June Fraley  
Nora Howard Fraley  
John Edward Fugate  
Paul Lee Gamble  
Mcleans Anthony Geojaja  
Michael Edward Ginn  
Mary Lee Golden  
Miguel Leyto Gonzalez  
Paul B. Green  
Deborah Jean Grubb  
Barbara B. Guerra  
Jean Maxon Guerrier  
Veechel Guerrier  
Sammy Douglas Gullett  
Ricki Lynn Gunterman  
Frances Yvonne Hall  
Garnett Ann Hall  
Clemma L. Hammond  
Melinda Anderson Hayes  
Alexander Aben Holland  
Pamela Shelton Hughes  
John Marshall Johnson  
Nancy L. Joseph  
Marka Kim Kannady  
Cynthia A. Keeton  
Linda Raney Kiesel  
Rebecca Sue Knipp  
Supit Kumsakul  
Sherre Harlo Lacy  
Edward Segun Lakanu  
Alvin G. Little  
Laurwin Stone Lowe  
Jan R. Mach  
Kurt D. Mason  
Kenneth R. Masters  
Dawn Alexis Maybury  
Pamela Sloas Maynard  
Dennis A. Maze  
Michael Glen McDonnell  
Michael S. McGuire  
Stephen A. McGuire  
Elizabeth B. McLothlin  
Guitta Ibrahim Melki  
Kathleen M. Mellenkamp  
Michael W. Miller  
Pamala Joy Moore  
Marsha Leigh Morris  
Frances Peck Murphy  
Spencer M. Nimmerger  
Cynthia Davis Nixon  
Nicholas S. Owens  
Adetunji Oyekunle  
Gwen Eichelman Palker  
Randall Bruce Pennington  
William C. Platt  
Stephanie Rabe Plumlee  
Martha Back Preston  
Susan Collinsworth Price  
Joseph Paul Rion  
Patricia Ellen Rose  
Nancy L. Rynerson  
David Allen Salyers  
Gus Anthony Schmitt  
Rebecca Lou Sewell  
Sandra Blackwell Simon  
Ann Lyons Stamper  
Woodrow Keith Stamper  
Siu Kay Tam  
James M. Thomas  
Sandra Motley Thompson  
Wanda Sue Turner  
Freddie Robert Waggoner  
William L. Wagner, II  
Shaw Pong Wan  
Dennis Edward Waymon  
Roberta Webb Weikert  
Gregory Allan White  
Kara Gene White  
Teresa Gail Whitton  
Patricia Ann Wilson  
Sylvia C. Wilson  
Earl Clinton Wood, III  
Harry Eugene Woodell  
Terry Jean Wooton  
Vivian Fay Wright

Donald R. Gillman  
Mary Lynn Godecker  
Pamela A. Grant  
Mr. & Mrs. William A. Gullett  
Deborah Ann Gutermuth  
Robert Stewart Hackworth  
Raja N. Haddad  
Hazel Margaret Hanson  
Michael Allen Harrod  
Barbara Johnson Hayes  
David Scott Heintz  
Mr. & Mrs. James L. Hildreth  
Allphea Sue Holden  
Karen L. Jolly  
David Lawrence Jones  
Jacqueline Jones  
Patricia F. Jones  
Kevin Kelley  
Michael Lynn Kelley  
Michael Wayne Koehler  
Jeffrey J. Lendon  
Hossein Letafat  
Dary Dale Littleton  
Douglas Charles Lowy  
Vicki Lynn Madden  
Mr. & Mrs. Mark Alan Magee  
Ahmad Mahmudieh  
Janice Watson Mansell  
Gregory John Martin  
Debra F. Mayo  
Melanie Kelly McAfee  
James Allen McAlister  
Mr. & Mrs. James P. McCarty, II  
John Gary Menke  
Pamela McClain Messer  
Beverly Lynn Miller  
Debra Dale Milner  
Leonardo Esteban Miranda  
Tilden R. Moore  
Brenda C. Murphy  
Ngolle Elvis Ngolle  
James L. Osborne  
Iva Lynn Persley  
Tamrong Ratanapool  
Mr. & Mrs. David H. Routt  
Jan Philip Seither  
Fred Thomas Sess  
Constance J. Shawler  
Sylvester M. Singleton  
Angel B. Smeeth  
Jeffrey Arlen Smith  
Marjorie Diane Smith  
Shelia Faye Smith  
2 LT. Donna Sue Souder  
Lynn Ann Spillman  
William Stanfill Stanley  
Terry Mitchell Stevens  
Sandra E. Stone  
Sitthica Techathanalert  
Marty L. Thornsberry  
Meiko Toma  
Vichitra Trikitkul  
Tamata Lee Tucker  
Phillip Lee Turner, Jr.  
Enrique Alberto Ugaz  
Yovonda Lee VanHoose  
Chiensri Vividhasiri  
Glenda Fay Walker  
Patricia Patton Wellman  
Steve Whitlock  
Lynne M. Ziebold

**1979**

Kathryn Rice Abbott  
Linda Susan Abbott  
Donald Eugene Adkins  
Afaf Alshamma  
Diane Marie Ambrose  
Parviz Vahdani Amoli  
Earl Collins Apel  
Patricia Austin  
Lovena Bailey  
Afliatoon Bastanizadeh  
Tavakoli Beitollahi  
Hubert Daniel Billter  
Pamela Furnier Bowman  
Deborah Maynard Brown  
Kathleen Ann Brown  
Stephen D. Butcher  
William Michael Campbell  
Patty Sue Carlson  
Linda Ann Carter  
Christopher Nolan Cheap  
Debra Elizabeth Clark  
Vicki Ann Cobb  
Freda Adkins Collett  
Robert Collett  
Charles C. Cornett, Jr.  
Carol Custenborder  
Tooran Davoodi  
Joseph M. Deaton  
Mary F. DeLong  
Christy Anne Downing  
Rodney Stewart Duff  
Kim Jacobs Dunn  
Leigh Ann Ellington  
Danny D. Fannin  
John M. French, Jr.  
Cynthia Rae Fuller  
Vida Ghahramani  
Esfandiar Ghollizadegan  
Richard A. Gibson  
Susan Sallee Gillespie  
Kenneth H. Godsey, Jr.  
Lora Ann Gray  
Rick A. Griffis  
Marian Lynn Gulley  
Ahmad Hakima  
Greg Tay Hall  
Amy Hamilton  
Lucinda Louise Hansgen  
Ronald A. Hansgen  
Vanessa Kay Hardy  
Myron Ray Highfield  
Mary Crooks Hines  
Pamela Dawn Hogg  
Seyed K. Hosseini

Deborah Kay Hughes  
Kathryn Lynn Hughes  
Mary Ann Ibanez  
Victoria Sue James  
Bonita Kay Johnson  
Richard Dale Jones  
Billy Ray Justus  
Gholam Reza Karimi  
Mohammad Farhad Khorrami  
Epainitus Fundi Kilasi  
Michael G. Kleier  
Boonyachat Kriddanawan  
Walter Franklin Kuntz  
Rickie David Kurtzer  
Jay Jay Maloney  
Steve A. Martin  
Beverly Ann May  
Randolph Lewis McClain  
Terri Ann McConachie  
Paul Michael McCullough  
Carl Stanley McGlone  
Deborah Deatley McGuire  
Malcom Tracy Miles  
Walter Franklin Kuntz  
Terry Michael Miller  
Rhonda Zimmerman Mills  
Agegnehu Misikir  
Effat Mortazavi  
Ahmad Reza Mostafavi  
Jenny Lee Nickum  
Mr. & Mrs. William W. Nolte  
Jeanie M. Owens  
Carol Burge Pack  
Jamshid Panahi  
Andalee Lacy Price  
Janet Williams Reibling  
John Mark Renfroe  
Mr. & Mrs. Stephen Lewis Rigbsy  
Rita Marie Rike  
Elizabeth Anne Roberts  
Mr. & Mrs. Rodney Robey  
Beth Hoskinson Rose  
Alan D. Ross  
Ezatowllah Saifi  
Martha Ann Salvato  
Chavethip Sangsophit  
Drew Edwin Scott  
Verona Janette Scott  
Connie Jo Sizemore  
Mitzie Diane Skinner  
Vicki Ellen Slack  
Rondel Smith  
Sandra Mitchell Smith  
Robin Burns Sparks  
Alvin Van Stevens  
Pamela Sue Strickler  
Joyce Ann Stitt  
Mary Elizabeth Stivers  
Susan Turner Stone  
Mr. & Mrs. Charles S. Taylor  
Madge A. Thomas  
Tommy Lee Thomas  
Mark Wood Turner  
Oda Lavonne Vanwinkle  
Suzanne Tedesco Vittitow  
Craig Douglas Weaver  
Duedard M. York, II  
Keith Dwight Young  
Mohammad Zolfaghari

**1980**

Mr. & Mrs. James R. Allen  
Marva Lacy Allen  
Victoria Amato  
Douglas E. Ashcraft  
William Harold Baker  
Beverly Lynn Barker  
Elizabeth R. Battisti  
Rosewood Binion  
Gregory Wayne Bowen  
Sandra Hicks Bradley  
Andrea Jane Charles  
Steve D. Collins  
Diane Cornett  
Virginia Dawn Correll  
William H. Cox, Jr.  
Mr. & Mrs. David A. Coy  
Michael Shawn Douglas  
Pamela Annette Evans  
Jane Ann Faler  
Seyedali H. Famouri  
Saeed S. Farbody  
Deborah Rickman Gifford  
Virgie Terry Gregory  
Cynthia Bryant Hall  
Rebecca Irene Hamilton  
Fereydoon Hamzehpour  
Steven D. Harmon  
Renee Ann Hautz  
Dwayne R. Hemphill  
Jennifer Jean Holleman  
April Elaine Howard  
John Chappell Hutka  
Thersa Anne Iwanowicz  
Vanasa Jarernpak  
Mr. & Mrs. Charles B. Jones  
Mr. & Mrs. David Allen Jones  
Deborah Ann Jones  
Mr. & Mrs. William P. Jones  
Mohammad A. Khalajani  
Jane Ann Kopp  
Oray Kurtay  
Joni Ann Lakin  
Richard Andrew Leslie  
Lisa M. Lewis  
Ching Wen Li  
Wendy Liu  
Hamid Mahmoodabadi  
Bradley S. Marcelliat  
Mr. & Mrs. John C. McVane  
Nasser Meh rzad  
Carl E. Miller, II  
Orie Thomas Mullen, Jr.  
Poonsup Naknaka  
Aloma Sue owsley  
Harry L. Pawley  
Louise Hanson Payne  
Janice Kaye Porter  
Eliisa Belinda Probst

Sithisin Ramyarupa  
Amoli Mehdi Rejaee  
Kathy Carter Robbins  
Lynette Walker Saine  
Catherine Lynne Sargent  
Kaye Gibson Schneider  
Samuel Phillip Sebastian  
Moshen Seddigh  
Louie J. Shobe  
Shahram Shokooh  
Carolyn June Sparks  
Susan Thompson Stapleton  
Suzette Stegall  
Leigh Ann Stewart  
Billie Ann Talbert  
Danny Paul Thacker  
Linda Thiede Thomas  
Danny Harmon Thornsberry  
Fazle Amin Tiwana  
Marcia Wermuth Urban  
Wendell Lee Vittitow  
Dale Waddell  
Teresa A. Walker  
Judith L. Ware  
Florence Elaine Wells  
Stephen G. Wessel  
Richard Kenneth Whitacre  
Elizabeth Nunley White  
Loretta Williams  
David D. Wilson, Jr.  
Tariq Haji Yaqub

**1981**

Deborah Bieri Alfrey  
Samuel Arredondo, Jr.  
Randy N. Bayatti  
Cheryl Taylor Blevins  
Valeria Ann Couch  
Nancy Phillips Crase  
Morri Chammess Daugherty  
Izadbaksh Djahanshahi  
Ann Jillson Duvall  
Dwight Donal Elam  
Ali Asghar Etemadian  
Mr. & Mrs. George A. Flora  
Michael P. French  
Phyllis Smith Galbraith  
Wretha Gayle Goodpaster  
Raymona Genipher Greer  
Tammy Lee Griffith  
Sharon Kay Gulley  
James W. Hamilton  
David Daniel Howe  
Carole Lee Hutchinson  
Shahram Jahanshahi  
Gholam Reza Kahidi  
Kathleen Susan Kaiser  
Marilyn Jane Keeton  
Jamileh Khorsandi-Amoli  
Jackie Sue Kinder  
Amy Marie Kordenbrock  
Gary J. Lawler  
Amy Ai-Mei Lee  
Nicholas John Lee  
Abbas Letafat  
Andrea James Lewis  
William C. Lewis  
Thinby Leo Liu  
Alfred Julius Mangu  
Vickie M. McIntire  
Leo G. McIntire, Jr.  
Mr. & Mrs. Glen K. Menhouse  
Mong Yung Oung  
Kambiz Pakfar  
Dennis Pollock  
Charles Allen Polen  
Catherine Pollock  
John P. Rahn  
Vivian Vlarck Razor  
Carolyn Lee Roberts  
Margaret Ann Sampson  
David Robinson Sawyer  
Mary Ruth Sayres  
Jacqueline Y. Shepherd  
Jane Russell Sluss  
Ernestine Sluss  
James Trent Terry  
Mr. & Mrs. Gregory A. Threat  
Dawn Yvette Tinch  
Dianne Lynn Tolson  
Paul Jonathan Walton  
Mary Tollner Williams  
Janice Lee Wise

**1982**

Mansoor Aminilari  
Jose D. Barreiro  
Margie A. Brown  
Elizabeth C. Cook  
Azam Dehbozorgi  
Christine W. Djahanshahi  
Maura E. Doyle  
Becky Jewell Fields  
Catherine Fiorillo  
Larry J. Hamilton  
Ronald L. Hardee  
Julie Chandler Hawkins  
Glendon E. Hobbs  
Leighton Jones  
Enayatollah Karimian  
Elaheh Khorsandiamoli  
Philip M. King  
Helen K. Kwaven  
Zaharuddin Mahmud  
Barry Marshall  
Gregory S. Mullins  
Noridah Mohd Noor  
Elizabeth Oosthuizen  
William James Read  
Keith B. Shepherd  
Mohammad Shirazinejad  
Randy J. Skaggs  
Charles M. Stephens  
Hai-Jyr Sung  
Mostafa Vatamand  
Howard W. White  
Mahmud Massaud Zidan

Office of Alumni Relations  
Morehead State University  
Alumni Center  
Morehead, KY 40351

Non-Profit Organization  
U.S. Postage  
PAID  
Morehead, Ky.  
Permit Number 55

ADDRESS CORRECTION REQUESTED

FAYE BELCHER  
217 WARD OATES DR. X  
MOREHEAD, KY 40351  
ASSOC.

## Commentary

# Is college worth the investment?

Two recent developments should be of interest to those who persist in questioning the value of a college education.

The U.S. Department of Labor compiles a myriad of statistics on the American work force, including the unemployment rates. In recent months when the overall jobless rate was more than 10 percent nationwide, the rate was barely three percent for college graduates. And, in certain fields such as computer science and health care, a manpower shortage continues to exist.

Another recent finding of interest is the seven-year study of wages by the National Center for Educational Statistics (NCES). The research found that the greater the educational attain-

ment of young people, the higher their starting wages.

"For many young people and their families, an important motivation for furthering their education is the improved changes for promotion and salary increases," NCES said.

While students who go directly from high school into the world of work usually make more money at first, the wages of college graduates quickly catch up and overtake those of less educated workers, the study determined.

The NCES statistics came from an analysis of data from the nationwide high school class of 1972. The study sampled 23,451 young adults who were high school seniors in 1972 and who answered

five surveys from 1972 to 1979.

Interestingly, college-educated women moved ahead of their less educated peers within four years on the average while men with college degrees required about six years to overtake their non-college classmates of the same sex. Certain high-paying crafts jobs such as steelmaking and construction were cited as factors in the study. Women without college, obviously, do not have as many of those opportunities.

If you combine the results of both of these statistical calculations, the message is unmistakable:

A college degree means higher wages on the average and a much lower risk of unemployment!

— MORRIS L. NORFLEET

# MOREHEAD STATEMENT

For Alumni and other friends of Morehead State University

Vol. 7, No. 1

July, 1983

SPECIAL DOUBLE SUPPLEMENT: THE UNIVERSE

VOL. 163, NO. 6 JUNE 1983

## NATIONAL GEOGRAPHIC

THE ONCE AND FUTURE UNIVERSE™

THAT NOBLE RIVER, THE TRAMES 393

GOOD TIMES AND BAD IN COAL COUNTRY 793

WARRIORS FROM A WATERY GRAVE 821

LAST OF THE BLACK-FOOTED FERRETS? 828

OFFICIAL JOURNAL OF THE NATIONAL GEOGRAPHIC SOCIETY WASHINGTON, D.C.

### National Press

MSU's exciting agricultural research project on a Martin County mountaintop received national attention in the June issue of **National Geographic Magazine**. Details inside.