



7189-5-45-1

**MOREHEAD
STATE
COLLEGE
ALUMNI
ASSOCIATION**

•

*thru
the
year*

•

1958

**Vol. 1
No. 1**

Dear Alumnus:

I am delighted to have this opportunity to send personal greetings to you and to bring best wishes from the faculty and staff of your Alma Mater. We are trying to keep Morehead State College in step with the times, and develop an institution of quality and character of which you can be proud. We feel that we have made great progress in the past few years with a larger student body, additional faculty, diversified programs and improved physical facilities. However, we need the continued support and assistance of the alumni to make a bigger and better Morehead State College. Whatever success we enjoy together will bring greater delight to us who are here on campus, and will enhance the degree which you earned while you were here.

We hope you will take advantage of every opportunity which you have to encourage the high school seniors from your area to continue their education at Morehead.

If you have occasion to do so, we would like to have you visit the campus at any time.

Very truly yours,

Adron Doran
President

GROWTH OF MOREHEAD STATE COLLEGE

Delightfully progressive has been the general trend of the increasing rate of growth of the student population of Morehead State College since its beginning thirty-five years ago.

By an act of the general assembly of Kentucky in the 1922 session two new normal schools were established to train teachers for Kentucky's schools. One of these was located at Morehead and was opened for classes in the fall of 1923. Even though the school at first was primarily of secondary rank, twenty-one students enrolled in the college department during that year.

In 1926 the name of the school was changed to the Morehead State Normal School and Teachers College, and the following year the first college class, consisting of three men, was graduated. The 1928 class had five students. Two years later the institution became the Morehead State Teachers College, the secondary department being continued only in the training school. By this time there were too many faculty members for all to sit on the platform during chapel, but still many people knew nearly every person on the campus.

The 1938 graduating class increased in numbers to eighty-seven, more than seventeen times as many as ten years before. The demand of World War II for manpower reduced college attendance in general, and our 1948 class dropped to fifty-five. That same year the school assumed its expanded role of service to the citizenry of Eastern Kentucky by becoming the Morehead State College.

In 1941 Morehead State College took its rightful place among the graduate schools in Kentucky, and the next year granted its first master's degree. This program has been expanding rapidly, and during 1958 forty-five of the college's degrees were of that rank.



The last ten years we have witnessed by far the greatest growth of any period. Imagine the 1958 class of two hundred eighty-seven! Yes, you must watch our recent growth to enjoy it. It is still increasing.

This growth poses a challenge for the alumni. The student body has multiplied, and prices have spiraled till costs of operating the college can hardly be met in the familiar complacent manner. Every alumnus must feel obligated to get in line with the Alumni Association and do his part in a concerted effort to sponsor a program that will adequately finance our Morehead State College.

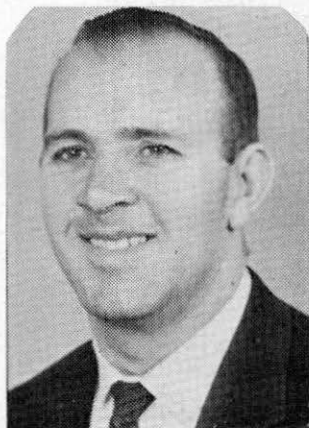
PENNY NAMED EAGLE FOOTBALL COACH

Guy D. Penny, former University of Mississippi football star, has been named football coach at Morehead replacing Paul Adams who resigned before the end of the 1958 season.

Penny was a four-letter winner at Old Miss, completing his collegiate career in 1950. His team was co-champion of the SEC in 1948 and played in the Delta Bowl at Memphis, Tennessee.

He began his coaching career at Collinsville, Alabama after his graduation from college. He then moved to Geneva, Alabama and coached the basketball and football teams at that school for the next five seasons.

Penny comes to Morehead from the Martin Branch of the University of Tennessee. He began his new duties February 1 and conducted spring practice here.



Guy Penny

FACILITIES

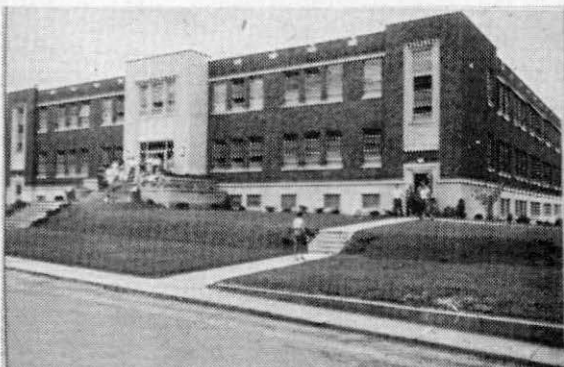
The 1958-59 school year has been a crowning one in the eyes of Morehead State College students, administrators, faculty, staff and friends and supporters of the college who like to see the work that is being accomplished.

The year was preceded by some major construction which included the final work on the Doran Student House and the college fieldhouse. These two buildings were completed in 1957. The Doran Student House is one of the South's most modern and most beautiful student centers. The fieldhouse, featuring the amazing mercury vapor lighting, seats 4,500.

These buildings are in full use, providing the students a place to refresh themselves, eat their regular meals, make the necessary purchases at the college bookstore and be entertained by the performances of the fine Eagle basketball teams.

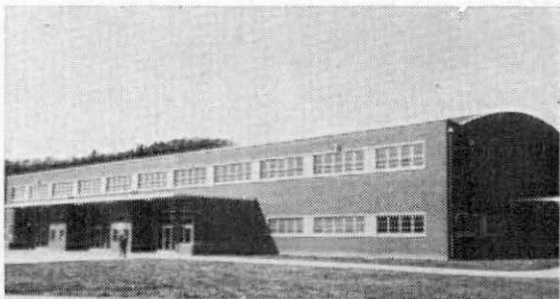
In addition to these, the campus has also seen the dreams of better classroom facilities, better dormitory conditions, more adequate parking space, and a good baseball field become realities. Improvements are currently being made on the football field and Jayne Memorial Stadium.

During the current school year, the construction of a new men's dormitory has begun. This dormitory, costing \$1,150,000 is being constructed behind Breckinridge Training School facing the picnic area below the college lake, in itself a great asset to the campus' layout and facilities. This new dormitory will consist of 201 rooms and is scheduled to be completed by the second semester of the 1959-60 school year.



Doran Student House

Just this spring a federal loan has been granted for the building of 100 units of housing for married students. These units will be constructed on the slope facing the men's



Fieldhouse

dormitory. It will consist of 84 studio efficiency apartments, eight one bedroom apartments and eight two bedroom duplex apartments.

This building project will get underway in July of this year if all plans develop as they are scheduled.

The new buildings which are now completed and these building projects are of tremendous importance to the growth and development of Morehead State College. The lack of adequate living facilities has been one of the greatest drawbacks to our school's progress. Now the barrier is being torn down. You can help the college to grow by supporting these progressive moves.

Our college has experienced the most rapid growth in enrollment, percentage-wise, of any college in Kentucky. These are reasons.



New Men's Dormitory

ABOUT THE CURRICULUM

With the increase in enrollment, curricular offerings and staff have increased in most of the departments and divisions. However, certain changes have taken place that merit particular attention.

The graduate offerings have been expanded so that courses for graduate students are found in several fields of study other than professional education. Graduate students are urged to do a significant portion of their work in a subject-matter field as a means of advancing their general education and improving their teaching efficiency.

Interest in the study of foreign languages has grown to the extent that an additional instructor in this field will be employed for the next school year.

The work in speech has also developed to a marked degree. Three full-time instructors are now employed for instruction in speech and dramatic art with an additional person working in speech correction.

It has been necessary to move the Art Department out of the library building so that the necessary expansion of library services may be made. Among these additions to the Library is a Materials Center. This Center collects teaching materials of all types and for all grade levels. It is available for use both by students and in-service teachers.

The Art Department is now housed on the ground floor of Allie Young Hall and, because of its improved physical facilities, is in position to render even more significant service than it has in the past.

At the present time a study is being made which involves the total faculty and the entire curricular program. Graduates of the college may feel certain that changes and advances will be made as the needs arise.

Warren C. Lappin



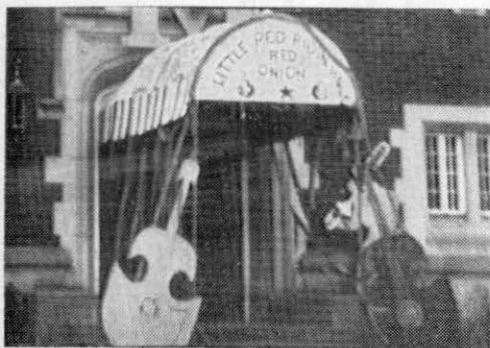
First Place Float



Morehead State College was surrounded by an atmosphere of FAIRYLAND AND FANTASY for Homecoming in 1958. All who returned to the campus on October 11th found themselves in the usual swirl of activities.

After registering in the Doran Student House, most Alumni were happy to share in the dedication of Lappin Hall, formerly the Science Hall. Ted Crosthwaite, Bardstown superintendent, represented the Alumni Association on the program. Dean Lappin graciously accepted a commission as a Kentucky Colonel. His smile and his appropriately cheerful comments have been fondly remembered by his friends and former students.

The Crescendo Club won the float competition with their float SWAN LAKE. Miss Betty Sizemore, a junior from East Point, Ky., reigned as Queen over the parade and other activities of the memorable day. Her attendants were Mary Mullins, Jane Carver, Lulla Belle Webb, Patsy Taylor, Scottye Copher, Arlene Shadrach, Glenna Begley, Alice Fannin, Sally Roberts, and Judie Wilson. They are pictured from left to right above.



Winning Dormitory

A tea-dance reception was held in the Baird Music Building after the parade. The attendance was small, but those who did attend enjoyed the music, punch and the opportunity to look at old yearbooks and chat with friends.



urt



Dean Lappin

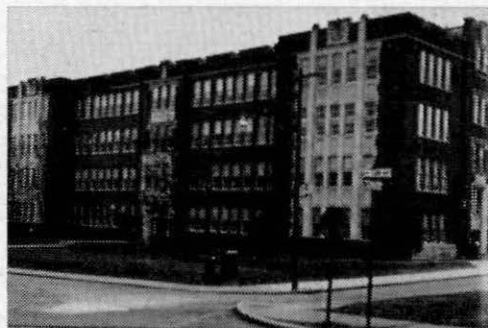
Cash prizes were presented to first, second and third place floats during the halftime of the Homecoming game with West Virginia Tech. Men's Hall won the dormitory decorations contest with their theme of Goldilocks and the Red Onion.

Plaques have been made by Rondal Hart, a 1958 graduate and presently the industrial arts instructor at Breckinridge Training School.

Many of the Alumni helped with the plans for the 1958 Homecoming. A group including John Collis, Earlyne Saunders, Don Holloway, Elsie Cornett, Marguerite Jayne, Nell Sue Cheatham, Mary Northcutt, Mary Alice Jayne, Bill Mack, Lucy Osborne, and Mr. and Mrs. Keith Huffman, worked with Executive Secretary Carl Woods. Others who should be recognized for their participation are Deane Tant, Roy Caudill, Tom Combs, Mona Combs, Terry Caudill, Jack Helwig, Paul Cox and Mary Cox.

Begin planning now to return to the campus for Homecoming in 1959. One student traveled for 36 hours from Florida to attend in 1958. Another person returned to the campus for the first time in 19 years.

Many new plans will be made for the year's activities. A new coach will be here for football and he needs the assistance of all those who have graduated here.



Lappin Hall

JOINT ALUMNI COUNCIL

Representatives of Kentucky's six state institutions met February 25, 1957 at the University of Kentucky to discuss the possibility of a Joint Alumni Council. An organizational meeting was held April 10, 1957 in Louisville. A final organizational meeting for the purpose of drawing up a constitution and electing officers was held June 5, 1957.

Officers were elected at that meeting to serve until July 1, 1958.

The Council listed the following as its purposes:

1. To provide an opportunity for the administrations of the member institutions and representatives of the six alumni associations to consult concerning mutual problems.
2. To provide a definite agency for a cooperative state-wide approach to the solution of mutual problems, using present alumni organizations insofar as possible.

Membership in the Joint Alumni Council is composed of the presidents of all member institutions and the president of each alumni association, the executive secretary of each association, and two representatives of each alumni association (to be chosen as each association may decide for two year terms on alternate years.)

The first annual meeting was held October 28, 1957 at Murray. (Each fall one of the member institutions is host to the meeting.) President Doran, Mr. Wicker, Robert Warnock, Carl Woods and John Collis attended the first meeting.

The second annual meeting was held October 27, 1958 at the University of Kentucky. President Doran, Mr. Wicker, Carl Woods, Don Holloway and John Collis attended. Don Holloway was elected vice-president. John Robinson, Eastern representative was elected president to succeed Murray's M. O. Wrather.

At each meeting, whether full membership or executive council, the harmony of purpose of all representatives has been exceptional. This was exemplified by the cooperation of the schools in the first important joint action—the display at the Kentucky State Fair. At the meeting last fall more concrete plans were discussed.

A seminar of 15 to 20 representatives from each alumni association to better understand the purposes and workings of the Joint Alumni Council has been planned. It is felt that attendance at this seminar will do much more to give our members an opportunity to learn more about the organization than any number of reports such as this.

Probably the most important purpose of the Council other than the fine cooperative spirit of approach to problems is the possible combined effort of all alumni of our state schools in expressing our needs to our elected officials. The approach of an elected representative by a combined group of alumni from every school in each county or district is obviously much more effective than an individual representing the alumni of one school.

It may be too late next year, or next month, to give our members the information that they need to help us prepare for the future.

John Collis

ON MOREHEAD STAFF

Earlyne Saunders, MSC class of '37, is currently completing her first year as Associate Dean of Students here. She is also serving as an instructor in social science.



Earlyne Saunders

WHERE ARE OUR GRADUATES ? ? ?

Approximately 3,000 persons have graduated from Morehead State College since that first class of four which was awarded diplomas in 1927. The college in the past has not kept as close contact with these graduates as it should have. However, the institution has committed itself to a follow-up program for its alumni which should be mutually beneficial.

Three important steps have been taken to implement this program. First, a new division of the college, the Division of School Services, was organized and charged with the responsibility of in-service training, placement, and school relations. Second, the college is cooperating with the State Department of Education in the promotion of in-service training for this region. Third, the Alumni Association will be staffed with a secretary who will give full time to alumni and related matters.

A committee has recently been assigned the responsibility of evaluating the products of Morehead State College. This committee is now working in cooperation with the Secretary and the Executive Committee of the Alumni Association to locate and find out the occupation of each graduate as well as to secure other vital information.

When this study is complete, an Alumni Directory will be published listing each graduate by class, giving his address and other information. Every Morehead alumnus will want such a publication. Further, the secretary will make three card files of the alumni: (1) a general alphabetical file; (2) a permanent class file; and (3) a geographical file. Every effort will be made to keep these cards up to date in the future.

The chances are that your help will be needed in contacting all of our alumni. If you should receive a list of names from us in the near future, we hope that you will mark the addresses of as many of them as possible and return the list. This will be a great service to us in our work.

Monroe Wicker

GRADUATES STAR

Ex-Morehead basketball stars Dan Swartz and Steve Hamilton had good seasons with the Wichita Vickers and Minneapolis Lakers respectively. Swartz, his team's most accurate shooter, helped his mates to the A.A.U. championship and was chosen to represent the United States in the Pan-American games. Hamilton was a member of the N.B.A. Western Division champions who fell to the Boston Celtics in the World Basketball Playoffs. He is also a professional baseballer in the Cleveland Indians farm system.

ALUMNI BULLETIN

This bulletin is scheduled to be published periodically by the Morehead State College Alumni Association. All alumni are asked to assist in its success by submitting any news of Morehead graduates to the Association office on the campus. Do your part to make it worthwhile!

MSC FEATURED

A four-page picture story about Morehead State College appeared in the December, 1958 issue of COACH AND ATHLETE, national magazine for coaches, officials, trainers and sports fans. The article was written by Billy J. Hall, class of '57. Copies of this publication may be secured by contacting John Collis at the MSC bookstore.

JAMES SMILEY IS RECIPIENT OF ALUMNI SCHOLARSHIP

James Smiley, a 1958 graduate of Prestonsburg High School, Prestonsburg, Ky., is the recipient of the Morehead State College Alumni Association scholarship.

The scholarship is awarded each year to a beginning freshman who shows evidence of need of such assistance and is declared worthy of such by his high school officials.

MOREHEAD STATE COLLEGE

ALUMNI ASSOCIATION

OFFICERS

President

Robert Warnock
Sixth and Canal Streets
Franklin, Ohio

Past President

Fola Hayes
326 Manhattan Drive
Lexington, Kentucky

Vice-President

Don Holloway
Morehead State College
Morehead, Kentucky

EXECUTIVE COUNCIL MEMBERS

1957-1959

Avanelle Bradley, '28
John Gray, '30
Austin Riddle, '32
Marguerite Jayne, '34
Ollie D. Adams, '36
Mrs. Woodrow Barber, '38
Marie Turner, '40
Mrs. Ralph Cassity, '42
Mrs. M. R. Wheeler, '44
Mary Denny, '46
Calvin Hunt, '48
Mrs. Randy Wells, '50
Marvin Rammelsberg, '52
George Ann McBrayer, '54
Velma Atkinson, '56

1958-1960

Russell Williamson, '27
Mrs. Steve Hook, '29
Ira T. Caudill, '31
Ellen Hudgins, '33
Ray E. Holbrook, '35
Elijah Hogge, '37
Harry K. Lowman, '39
Mrs. Thomas Combs, '41
William S. Black, '43
Mrs. Warren Cooper, '45
Bill Mack, '47
Betty Creech Adams, '49
Milford Wells, '51
Roberta H. Allo, '53
James Earl Davis, '55
Merle Nickell, '57

Dear Alumnus:

Although this letter is the only contribution I can make to this nice brochure, it does give me an opportunity to thank you for the honor and privilege you granted me in allowing me to serve the Alumni Association and Morehead State College.

During the past four years, under the leadership of President Doran, we have seen Morehead State College grow beyond our fondest dreams. We have seen the enrollment more than double. We have seen, and will continue to see, the physical plant increased and altered as enrollment increases. My hope, which I am sure is also yours, is to see the Alumni Association keep pace with our Alma Mater. With a renewed effort on our part I firmly believe it will keep pace.

This brochure is one of the ideas of a recently appointed Advisory Committee. Not only this brochure, but other ideas are being put into action by this committee. In their weekly meeting they are working on revisions to the constitution; bringing the alumni records up to date; starting a card file on all alumni; and planning for a permanent director of alumni affairs on the campus at all times. I am sure they will welcome any idea or suggestions you can send them.

Thru our membership in the Joint Alumni Council we have seen the alumni association of our sister state supported colleges in action. Thru this association we have gained an insight into the huge task that confronts all the institutions of higher learning. We were also awakened to the inadequacy of our organization to meet this challenge.

I hope that thru our renewed efforts and your capable assistance we can build our Alumni Association to meet this challenge.

Very truly yours,

Robert E. Warnock, President

Morehead State College

Alumni Association

MOREHEAD STATE COLLEGE ALUMNI ASSOCIATION

ELECTED OFFICERS

(To be installed May, 1959)

President

Don Holloway
Box 771, Morehead State College
Morehead, Kentucky

Vice-President

Lloyd Cassity
103 Mt. Savage Drive
Ashland, Kentucky

EXECUTIVE COUNCIL MEMBERS

1959-1961

- 1930—Clyde Lewis, Ventura Hotel, Ashland, Kentucky
1932—Bruce Dorsey, Flemingsburg, Kentucky
1934—Marguerite Jayne, 316 Wilson Avenue, Morehead, Kentucky
1936—Orville B. Hayes, Maysville, Kentucky
1938—Octavia Graves, Morehead State College
1940—Hazel Whitaker, 153 Lyons Avenue, Morehead, Kentucky
1942—Fola Hayes, 326 Manhattan Drive, Lexington, Kentucky
1944—Hazel Calhoun, Grayson, Kentucky
1946—Mrs. Robert Holbrook, 210 Elizabeth Avenue, Morehead, Ky.
1948—Merle F. Allen, Box 683, Morehead State College
1950—Walter J. Prop, 2040 Dellwood Drive, Lexington, Kentucky
1952—Frank Profitt, Salyersville, Kentucky
1954—Mary P. Northcutt, 500 College Street, Morehead, Kentucky
1956—Peggy Burke, 10 W. Walnut Street, Hagerstown, Indiana
1958—Rondal Hart, Morehead State College

CALENDAR OF EVENTS

May 31, 1959

- 12:00 Dutch Luncheon—Cafeteria
12:45 Business Meeting—Doran Student House
(Amended constitution to be voted on)
4:00 Baccalaureate, Dr. Ben F. Lewis, Head of
Department of Philosophy and Religion,
College of the Bible, Lexington, Speaker
June 3, 1959
7:00 A. M. Senior Breakfast
7:30 P. M. Commencement, Governor Cecil Under-
wood of West Virginia, Speaker