

News

University Communications

Pauline Young, Director

www.moreheadstate.edu

Morehead State University

UPO Box 1100

Morehead, KY 40351-1689

(606) 783-2030

Aug. 1, 2002

FOR IMMEDIATE RELEASE

MOREHEAD, Ky.--Award-winning singer/songwriter Dulcie Taylor will be among three acts performing at the next "Americana Crossroads Live" concert Aug. 30 at Morehead State University.

Taylor, who is also a talented multi-instrumentalist, has been praised for not only her songwriting, guitar and dulcimer prowess, but for her clear, versatile vocal performances.

Taylor's songs, as one critic said, "speak of the fleeting moments in life when thoughts, feelings and emotions manage to steer the mind into passive expressionism...and puts to music life's everyday moments."

The winner of a prestigious WAMMIE (Washington Area Music Association) award last year, Taylor also won five awards at the 2000 Mid-Atlantic songwriting contest, and was a finalist in the Chris Austin songwriting contest at Merlefest 2001 in Wilkesboro, N.C., where she also performed. While she has headlined numerous shows, she has opened concerts for acts as diverse as Jerry Lee Lewis and the reunion line-up of The Mamas & the Papas. She was recently elected to the Board of Directors of the Poetry Series at Washington, D.C.'s Folger Shakespeare Library.

Taylor's newest release on Black Iris Records, "Diamond & Glass," is a follow-up to her acclaimed 2000 self-released "Other Side of the Bed." For "Diamond & Glass," she is joined by noted session guitarist Michael Landau, whose album credits include Michael Jackson, Bonnie Raitt, Tim McGraw, Cher and 'N Sync. Additionally, jazz pianist Brian Culbertson is featured on the CD, as well as Jeff Golub, guitarist and percussionist Scott Breadman.

Taylor is scheduled to take the stage at 9 p.m. in Duncan Recital Hall. Prior to her show, Freeman, Bell & Molter, an acoustic ensemble from Lafayette, Ind., will perform at 7:30 p.m., followed by Wishing Chair, a roots folk/pop group that has just released its fourth CD, "Crow," at 8:15 p.m. Doors open at 7 p.m., and the public is invited to view the display tables by performers and concert sponsors.

"Americana Crossroads Live," which is free and open to the public, is a presentation of Morehead State Public Radio and the Kentucky Center for Traditional Music (KCTM). Sponsors include Toyota, Kentucky Folk Art Center, Morehead Tourism Commission, Farmer's Mercantile, Poppy Mountain Bluegrass Festival, Root-A-Baker's Bakery and KCTM.

Additional information is available by calling (606) 783-2001.

#####

sas

MSU is an affirmative action, equal opportunity educational institution.

Photo

University Communications

Pauline Young, Director

www.moreheadstate.edu

Morehead State University

UPO Box 1100

Morehead, KY 40351-1689

(606) 783-2030

MSU CONCERT TO FEATURE DULCIE TAYLOR

Dulcie Taylor, an award winning singer/songwriter and multi-instrumentalist, is one of three acts that will be performing during the "Americana Crossroads Live" concert on Friday, Aug. 30, at Morehead State University. The concert, which is free and open to the public, begins at 7:30 p.m. in Duncan Recital Hall. Also performing will be Freeman, Bell & Molter, an acoustic ensemble, and Wishing Chair, a folk/pop group. The program is part of a series sponsored by Morehead State Public Radio and the Kentucky Center for Traditional Music.

(MSU photo)

7-31-02py

MSU is an affirmative action, equal opportunity educational institution.



News

University Communications

Pauline Young, Director

www.moreheadstate.edu

Morehead State University

UPO Box 1100

Morehead, KY 40351-1689

(606) 783-2030

Aug. 1, 2002

FOR IMMEDIATE RELEASE

MOREHEAD, Ky.---Morehead State University students will find numerous social, cultural, athletic and educational opportunities awaiting them when they return to campus for a new academic year.

Residence halls open at noon Tuesday, Aug. 13, for upperclassmen, including those who took advantage of the first-ever online housing registration service this spring. Various student organizations will be on hand at 8 a.m. Wednesday, Aug. 14, to help freshmen move into their rooms and to introduce them to campus life.

Once settled into their residence halls, students may take part in a variety of activities planned to welcome them to the MSU community, from business days to bowling and from Web workshops to a worship service.

Beginning at noon on Wednesday, Aug. 14, new student orientation will kickoff with "Take Care of Some Business" at the Academic-Athletic Center. There, students may pick up their ID, the Eagle Card and parking permits; confirm MSU 101 class section and requirements, sign up for Web education sessions; meet student organization representatives and more. The day's activities will conclude with a traditional block party from 8-11 p.m. on the Wilson/Regents Hall lawn, which offers a good opportunity to meet fellow students, faculty and staff.

"Welcome to the Time of Your Life!" is the first activity on the orientation schedule for Thursday, Aug. 15, beginning at 8:45 a.m. in Button Auditorium. This required program will feature renowned speaker Dr. Will Keim, followed by presentations by students and members of the Student Life staff. The afternoon session at 1 p.m. will include "Big Money," an interactive multimedia program to educate students on money matters, including how to avoid credit card debt and other financial traps. Patrick McGarrity and John Dietrich are the instructors.

Residence Hall floor meetings are slated for 7 p.m. that night, followed by a performance by comedian Renee Hicks at 8:30 p.m. in Button Auditorium.

(MORE)

Back to School
2-2-2-2-2

Business days will continue at 10 a.m. Friday, Aug. 16, in Button Auditorium as an orientation session for non-traditional and commuter students is presented in Fields Hall seminar room 2. Web sessions for those who previously registered will be held in the Camden-Carroll Library computer lab.

The staff at the Wellness Center wants everyone thinking fitness with an orientation session from 2-6 p.m. Saturday, Aug. 17. The afternoon features an open recreation period in Laughlin Health Building where students may bowl, use the weight room and sign out sports equipment. The day's agenda will conclude with a showing of "American Pie 2," on the Laughlin lawn beginning at 9:15 p.m. The film presentation is a "Drive-In Movie" feature of the Student Activities Council (SAC).

The Fellowship of Christian Athletes will open welcome activities at 11 a.m. Sunday, Aug. 18, with a worship service at Button Auditorium. An activities fair with an ice cream social and street dance, sponsored by the Student Government Association and MSU President and Mrs. Ronald G. Eaglin, is slated for 7-11 p.m. in the Combs Building courtyard.

When buying textbooks for the opening of classes on Monday, Aug. 19, students will find the MSU Bookstore has moved to a new home. Now located at 149 E. Main Street in Morehead, the store is fully operational with books, supplies, clothing and computer accessories.

The fun events will continue during the semester with a performance by hypnotist Tom DeLuca on Aug. 21 at 8 p.m. in Button Auditorium; a poster sale Aug. 19-21 in the Adron Doran University Center; comedian Brad Lowery on Sept. 4; Recycled Percussion on Sept. 11; and Friday night movies at the University Cinema, beginning Aug. 16 and continuing through the end of the academic year.

MSU's Football Eagles will open the home season on Aug. 31, taking on Cumberland at 7 p.m. at Jayne Stadium. Home games also will be held on Sept. 14, against Kentucky State University; Sept. 28, Butler; Oct. 12, St. Joseph; Oct. 19, Jacksonville; and Nov. 1, Tiffin.

Family members are invited to visit the campus for Family Weekend, Sept. 13-15. On tap are a number of events, including an MSU 101 picnic, student talent show, the MSU-KSU football game, golf scramble and Drive-In Movie.

Alumni and other University friends will be welcomed back to campus during Homecoming 2002, the weekend of Oct. 18-20. Activities on tap include a parade, a pep rally and the Homecoming Game, where the Eagles will host Jacksonville at 1 p.m. Oct. 19.

(MORE)

Photo

University Communications

Pauline Young, Director

www.moreheadstate.edu

Morehead State University

UPO Box 1100

Morehead, KY 40351-1689

(606) 783-2030

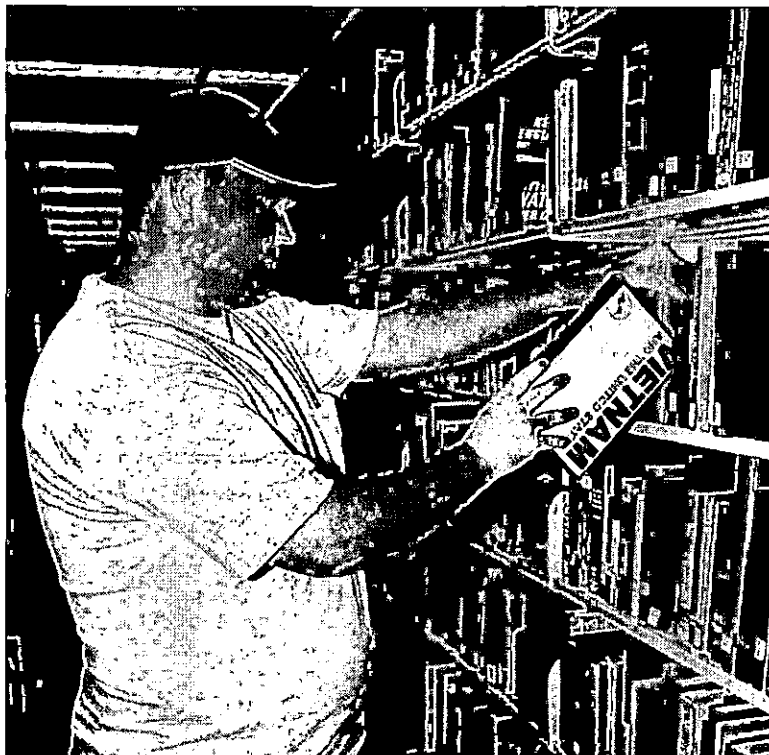
MSU STUDENT HOLDS SUMMER JOB

Several Morehead State University students worked on campus this summer, earning money to help pay for fall semester expenses. Wesley Dunn, Vanceburg freshman, shelves books in the Camden-Carroll Library. Dunn is a construction mining technology major. Fall 2002 semester classes at MSU begin Aug. 19. Additional information about academic programs at the University is available by calling the Office of Admissions at (606) 783-2000, or toll-free at (800) 585-6781.

(MSU photo by Shirley A. Smith)

8-1-02sas

MSU is an affirmative action, equal opportunity educational institution.



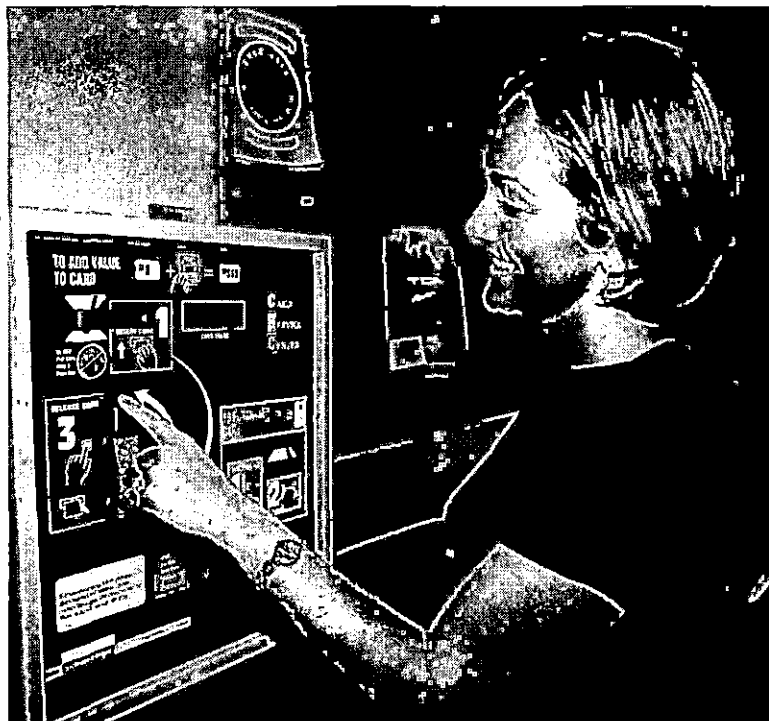
GETTING READY FOR THE FALL SEMESTER

Morehead State University students are gearing up for the fall semester. Jen Patrick of Wellington adds money to her Eagle Card, the University's official ID card for students that also functions as a debit card for various services on campus. Patrick is a senior elementary education major. Fall 2002 semester classes at MSU begin Aug. 19. Additional information about academic programs at the University is available by calling the Office of Admissions at (606) 783-2000, or toll-free at (800) 585-6781.

(MSU photo by Shirley A. Smith)

8-1-02sas

MSU is an affirmative action, equal opportunity educational institution.



Media Advisory

University Communications

Pauline Young, Director

www.moreheadstate.edu

Morehead State University

UPO Box 1100

Morehead, KY 40351-1689

(606) 783-2030

EVENT: Jim Carroll, author and e-commerce expert, speaks at **Regional Entrepreneur Conference**

DATE: Tuesday, August 6, 2002

TIME: 8 a.m. (keynote speech); 10-11 a.m. (panel discussion)

SITE: Ashland Plaza Hotel, Ashland

The current fall of the stock market, downturns in tech and Internet stocks, and how new businesses can still survive will be the hot topics for international speaker and author Jim Carroll. He will deliver the keynote breakfast address at the 2002 Regional Entrepreneur Conference, "Succeeding in a Digital Age," Aug. 5-6 at the Ashland Plaza Hotel.

With more than 30 books and 600 articles, Carroll has written and lectured extensively on business survival in the digital age and how businesses can embrace and use technology to thrive.

Nine small business workshops will be offered during the two-day event. Topics include: doing business on the Internet, designing and maintaining a Web site, selling items to the state and federal government, exporting and selling overseas and improving customer service.

Conference participants also will attend a reception, meet exhibitors and have breakfast and a luncheon complete with guest presentations.

####

Media representatives wishing to cover the conference and/or interview Jim Carroll should contact event coordinator, Kim Jenkins, at the MSU/Ashland Small Business Development Center, by calling (606) 329-8011.

7-29-02dlb

News

University Communications

Pauline Young, Director

www.moreheadstate.edu

Morehead State University

UPO Box 1100

Morehead, KY 40351-1689

(606) 783-2030

Aug. 1, 2002

FOR IMMEDIATE RELEASE

MOREHEAD, Ky.--- Morehead State University has announced that Matthew Kenneth Ballard of **Clearfield** is among those students receiving an Alumni Award and the Regents Scholarship for the fall semester.

Ballard, the son of Matt and Brenda Ballard, is a graduate of Rowan County Senior High School. He has received the Football Academic All-State Award, Algebra Award, Citizenship Award and the Leadership Award. His name has also appeared in "Who's Who Among American High School Students" and on the honor roll.

To be eligible for the Alumni Award, at least one parent or grandparent of the applicant must be an MSU alumnus and an active member of the MSU Alumni Association. The candidate must be admitted as an entering freshman or transfer student; and have a minimum ACT composite of 18.

To be eligible for the Regents Scholarship, applicants must be admitted to MSU as an entering freshman, and have an admissions index of 500 or more and have a minimum ACT composite of 20.

Applications and information on scholarships and grant programs at MSU are available from the Office of Admissions, MSU, Morehead, KY 40351-1689. The toll-free number is (800) 585-MSU1 (6781).

####

trt

Aug. 1, 2002

FOR IMMEDIATE RELEASE

MOREHEAD, Ky.---Nearly tripling in population for its upcoming second year, Morehead State University's Honors Leadership Residential College (HLRC) will be offering an enhanced college learning experience to more than 150 students this fall.

The HLRC, which began last year with 68 students on two floors of Butler Hall, provides a living-learning environment to help the University's top scholarship recipients and honors students develop their academic and leadership skills.

"The program offers students the chance to live and learn in the same place," said Dr. Beverly McCormick, assistant vice president for academic affairs and HLRC. "Students not only take classes, but they also interact with fellow honors students, take part in community service projects, attend special seminars and, most importantly, they learn valuable leadership skills."

She said the program's first year was a remarkable success, but students will be amazed at how MSU has improved upon that this year.

"We've been hard at work this summer renovating Butler Hall to better accommodate the increase in students," she said. "We've added air conditioning to the entire building, upgraded lighting and electrical wiring, added a new classroom and even installed new furniture in student rooms."

This fall, all students in the co-ed facility will be members of the HLRC, as well as some enrolled in the Academic Honors Program. They will have the usual amenities of a residence hall, but there are also two classrooms, study rooms on each floor, a lounge and even access to academic counseling and tutoring.

"My office in Butler Hall allows me to advise and counsel students daily, taking caring of many issues and questions on the spot, without forcing the student to travel to other parts of campus," said Dr. McCormick.

"Our study rooms and tutors have become one of the most popular aspects of the program," she explained, "All resident advisors are available to tutor students and we also have work-study students that are available 10-12 hours per week to help tutor in various subjects."

"The hospitable, community atmosphere of residential colleges has proven to be a very effective way to encourage students to stay in college," she said. "After just one year, we see what a true benefit this is to our students. We are even looking ahead to more expansion and improvements for the 2003-2004 academic year as well."

Additional information is available by calling Dr. McCormick at (606) 783-5156.

####

Photo

University Communications

Pauline Young, Director

www.moreheadstate.edu

Morehead State University

UPO Box 1100

Morehead, KY 40351-1689

(606) 783-2030

MSU STUDENTS PREPARE FOR FALL SEMESTER

Summer vacations are almost over and soon students will return to the classroom for the fall term. Morehead State University students will begin classes on Monday, Aug. 19. Nathan Hankins, Morehead sophomore, got an early start on purchasing his textbooks when he made a stop at the University Bookstore recently. Helping him with his purchases is Sandy Day, left, business cashier. During the summer month, the bookstore moved to a new location at 149 East Main Street in Morehead.

(MSU photo by Guy Huffman)

7-31-02py

MSU is an affirmative action, equal opportunity educational institution.



News

University Communications

Pauline Young, Director

www.moreheadstate.edu

Morehead State University

UPO Box 1100

Morehead, KY 40351-1689

(606) 783-2030

Aug. 2, 2002

FOR IMMEDIATE RELEASE

MOREHEAD, Ky.---Dr. Robert H. Willenbrink has joined Morehead State University as the new chair of the Department of Communication and Theatre.

A two-time MSU graduate, Dr. Willenbrink earned a bachelor's degree in theatre and communications in 1975 and a master's degree in communications in 1978. A Louisville native, he returns to the University to succeed Dr. Janet Kenney, who retired in July after eight years as department chair.

After receiving his Ph.D. degree in theatre from Bowling Green State University in Ohio in 1986, he became an assistant professor and director of theatre at the University of Central Arkansas. He taught acting, directing, theatre history, dramatic theory and literature, text analysis and theatre appreciation.

Dr. Willenbrink remained in Arkansas for 16 years, serving as chair of UCA's Department of Speech, Theatre and Mass Communication for nine years and becoming professor and director of theatre in 2001. During his tenure, he expanded the staff and faculty for the UCA Theatre and helped it earn accreditation from the National Association of Schools & Theatre. He also directed 39 plays and musicals, including several of his own creation.

Active on campus, he served on the UCA Faculty Senate as well as various committees in athletics and research. He also has worked to secure grants and other funding for theatre student projects and scholarships.

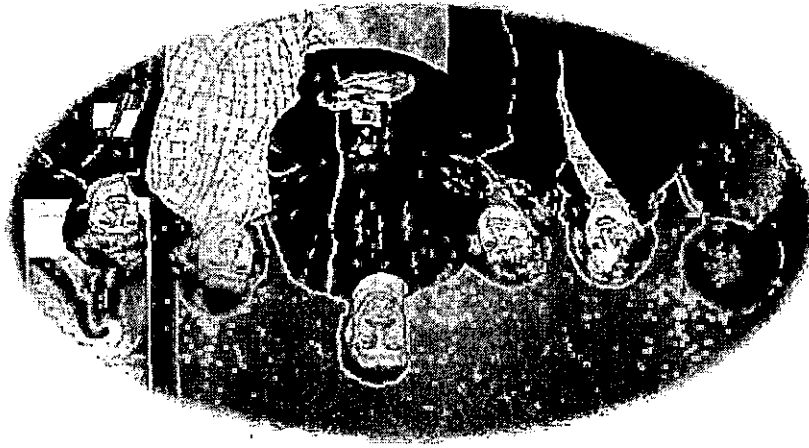
He served as the Arkansas chair of the Kennedy Center American College Theatre Festival (KCACTF) based in Washington, D.C. and spent the last two years as its Region VI chair.

In 1990, he founded the Youth Theatre of Central Arkansas as an educational opportunity for young actors under age 18. He also was instrumental in developing Very Special Arts, a performance group for individuals with special needs, and served as director of a national arts institute for challenged and disabled citizens.

Additional information is available by calling (606) 783-2134.

####

dlb



News

University Communications

Pauline Young, Director

www.moreheadstate.edu

Morehead State University

UPO Box 1100

Morehead, KY 40351-1689

(606) 783-2030

Aug. 5, 2002

FOR IMMEDIATE RELEASE

MOREHEAD, Ky.---It's time to draw up your designs and submit float ideas for the 2002 Homecoming Parade at Morehead State University.

"Constructing New Traditions" is the theme for this fall's event, which is sponsored by MSU and the Rowan County Tourism Commission. Kicking off the four-day MSU Homecoming Weekend, the parade will be held on Thursday, Oct. 17, at 6:00 p.m.

All community, civic and student groups are encouraged to participate. Float theme approval forms are available at the Adron Doran University Center's information desk on campus. The forms must be completed and returned on or before Friday, Sept. 27.

Cash prizes will be awarded for winning floats in both the community/civic category and the student category. First place receives \$1,000 with second and third places receiving \$500 and \$250, respectively.

Additional information is available by calling Darin Blackburn or Cheryl Farmer at (606) 783-2809.

####

dlb

Aug. 7, 2002

FOR IMMEDIATE RELEASE

MOREHEAD, Ky.--Morehead State University has announced that Ahren Hilterbrandt of Tollesboro is among those students receiving Regional Honors and Academic Honors Program scholarships for the fall semester. The daughter of Rick and Karen Hilterbrandt, she is a graduate of St. Patrick's High School.

Involved in numerous school activities, Hilterbrandt was a member of the Teen Leadership Club, National Honor Society and choir for three years; a varsity cheerleader for three years with one year as co-captain; class vice president for two years; member of Social Skills and Etiquette Club and Student Council class representative, one year; Future Business Leaders of America for two years with one year as secretary; and on the Homecoming Court, 2 years with one year as Queen.

In the community, Hilterbrandt participated in the National Pro-life March and the American Red Cross Coin Drive following the Sept. 11 terrorist attack and volunteered at church, YMCA and nursing home.

She has spent her summer vacations working in local businesses: Pizza Hut, Where in the World Gift Shop, Underground Aptitude and its predecessor, Sports Sensation. She also was a counselor for the YMCA summer camp.

To be eligible for the Regional Honors Scholarship, the applicant must be admitted to MSU as an entering freshman, be a graduate of a high school within MSU's Kentucky service region, be recommended by the high school, be the highest or second highest ranking academic achiever coming to MSU from that high school and have at least a cumulative 3.50 grade point average (on a 4.0 scale) based on seven semesters of work.

Students who receive at least 26 on their ACT and rank in the top 10 percent of their graduating class are eligible to be admitted in the Academic Honors Program and awarded a scholarship.

Applications and information on scholarships and grant programs at MSU are available from the Office of Admissions, MSU, Morehead, KY 40351-1689. The toll-free number is (800) 585-MSU1 (6781).

####

News

University Communications

Pauline Young, Director

www.moreheadstate.edu

Morehead State University

UPO Box 1100

Morehead, KY 40351-1689

(606) 783-2030

Aug. 7, 2002

FOR IMMEDIATE RELEASE

MOREHEAD, Ky.---The fall semester at Morehead State University will begin on Monday, Aug. 19, at 8 a.m. It is not too late for new or returning students to be a part of the upcoming term.

For returning students who have not pre-registered, class registration may be completed on the Web if the student's adviser has approved the schedule. Current students, who have an official checksheet on file, may register via MSU's Web site (www.moreheadstate.edu) using their Personal Identification Number (PIN). Those who do not have a PIN are given the option to choose one when they log onto the student user page.

Campus registration for new students will be offered on Thursday and Friday, Aug. 15 and 16, from 8 a.m. -5:30 p.m. in the academic departments. Those who have not declared a major will schedule their classes in 222 Allie Young Hall. Once the student's adviser has approved the schedule, the student will complete the business portion of the process.

The University will hold business days Wednesday through Friday, Aug. 14-16, in the Crager Room of the Adron Doran University Center, 9 a.m.-5 p.m., on Wednesday; and 10 a.m.-6 p.m., the following two days. Students will be admitted to the payment area based on an alphabetical listing with advance registered sophomores and juniors on Wednesday; seniors and graduate students on Thursday; and all freshmen on Friday.

The registration process is not complete until all fees are paid. A \$50 late fee will be charged if fees are not paid by 6 p.m. on Aug. 16.

Undergraduate students, who have not previously been admitted or were not enrolled this spring or during one of the summer terms, will begin the registration process at the Admissions Office, 301 Howell-McDowell. Graduate students will need to go to 701 Ginger Hall.

Additional information is available on the Web or by calling the Office of the Registrar at (606) 783-2008.

####

September Highlights

2-2-2-2-2

Sept. 27, Concert: "Americana Crossroads Live," Duncan Recital Hall, 7:30 p.m. Additional information: (606) 783-2001.

Sept. 28, Football: MSU vs. Butler, Jayne Stadium, 1 p.m., charge. Additional information: (606) 783-2020.

Sept. 28, Volleyball: MSU vs. Austin Peay State University, Wetherby Gymnasium, 11 a.m. Additional information: (606) 783-2122.

Sept. 29, Soccer: MSU vs. Tennessee Tech State University, 1 p.m. Additional information: (606) 783-2589.

Sept. 29, Senior Recital: Eric Allen, saxophone, Duncan Recital Hall, 8 p.m. Additional information: (606) 783-2473.

Due to early press deadlines, some listings subject to change.

#####

8-8-02sas

Photo

University Communications

Pauline Young, Director

www.moreheadstate.edu

Morehead State University

UPO Box 1100

Morehead, KY 40351-1689

(606) 783-2030

FREE CONCERT AT MSU

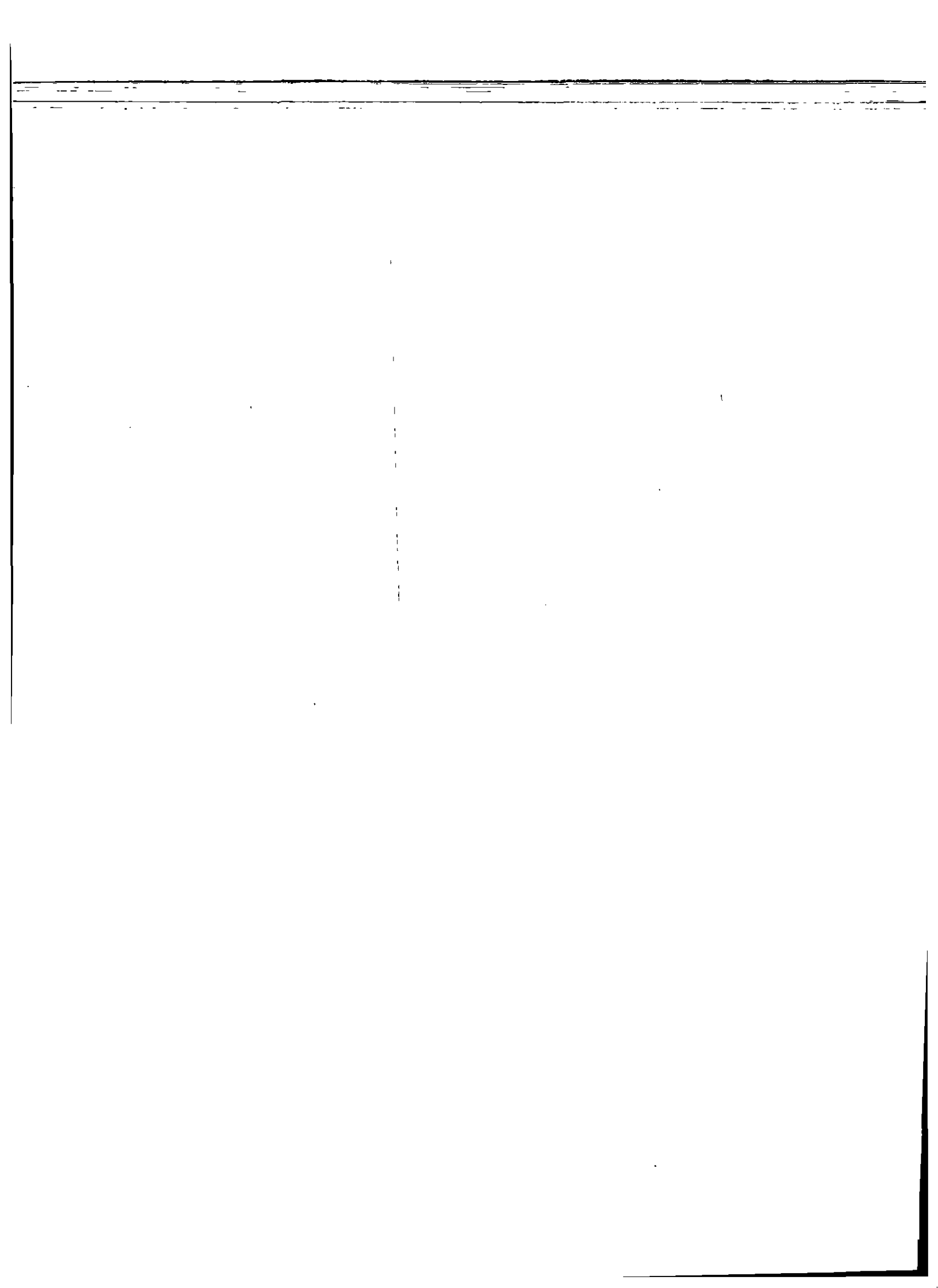
Freeman, Bell and Molter (FMB), an acoustic four-piece ensemble, will perform at the next "Americana Crossroads Live" concert on Friday, Aug. 30, at Morehead State University. FMB will take the stage at Duncan Recital Hall within the Baird Music Building at 7:30 p.m. They will be followed by Wishing Chair at 8:15 p.m. and Dulcie Taylor at 9 p.m. Doors open at 7 p.m. "Americana Crossroads Live," free and open to the public, is a presentation of Morehead State Public Radio and the Kentucky Center for Traditional Music (KCTM). Sponsors include Toyota, Kentucky Folk Art Center, Morehead Tourism Commission, Farmer's Mercantile, Poppy Mountain Bluegrass Festival, Root-A-Baker's Bakery and KCTM. Additional information is available by calling (606) 783-2001 or visiting the Web site at www.msuradio.com.

(MSU photo)

8-9-02sas



MSU is an affirmative action, equal opportunity educational institution.



Photo

University Communications

Pauline Young, Director

www.moreheadstate.edu

Morehead State University

UPO Box 1100

Morehead, KY 40351-1689

(606) 783-2030

MSU STUDENTS BEGIN A NEW SEMESTER

Students are back on the Morehead State University campus and the fall semester has begun.

Kim Claar, a Morehead junior speech communications major, issued a welcome to the Methodist Student Center via the sidewalk with an invitation for “free pizza.” The fall term runs through Dec. 13.

(MSU photo by Tim Holbrook)

8-16-02

MSU is an affirmative action, equal opportunity educational institution.



News

University Communications

Pauline Young, Director

www.moreheadstate.edu

Morehead State University

UPO Box 1100

Morehead, KY 40351-1689

(606) 783-2030

Aug. 19, 2002

FOR IMMEDIATE RELEASE

MOREHEAD, Ky.--Keeping up with rising student enrollment, Morehead State University begins the 2002-03 academic year with a new family housing complex and more than adequate living space for all students.

"In the last three years, we've invested more than \$2 million to modernize residence halls across campus and replace room furnishings," said Porter Dailey, vice president for administration and fiscal services. "We also provide high-speed Internet access and phone and basic cable service to every room."

A projected student population of nearly 3,200 will be living in MSU's 14 residence halls and three family housing complexes this semester.

"Our maximum capacity is about 3,660 students," said Kenny White, MSU housing director, "so we still have room to accommodate students that are getting a late start but still want to live on campus."

Eagle Lake Apartments, the University's newest family housing complex, opened this fall with 28 units. Located next to MSU's Eagle Lake, the \$3.1 million complex contains 22 one-bedroom and six two-bedroom fully furnished apartments, secure internal entrances to all rooms and two conference-size rooms that can serve as study areas or classrooms.

"These units are very affordable with paid utilities, full-size refrigerator, stove, microwave, dishwasher, as well as free phone, cable and high-speed Internet access and even individual balconies," said Dailey.

As one of the nation's safest campuses, MSU continues to make student safety a high priority with its five-year project to install sprinkler and fire alarm systems in all residence halls that require them.

"We have finished the fourth year of the project," Dailey said. "Eleven of our 14 residence halls and two family housing complexes now have complete fire safety systems. We'll finish the project next summer."

Renovations to one residence hall, Mignon Tower, were slightly delayed this summer when a fire broke out in June. Dailey says the new sprinkler system "worked perfectly" and the water and smoke damage was not as extensive as previously thought.

"Mignon Tower is now ready for students," said Dailey. "We've upgraded the air conditioning system and modernized the entire building with sprinklers, new furniture, bedding, desks and floor tile.

"We're proud to say that our residence halls are clean, safe and definitely in good condition."

Additional information is available from Dailey by calling (606) 783-2053.

####

d/b

MSU is an affirmative action, equal opportunity educational institution.

Photo

University Communications

Pauline Young, Director

www.moreheadstate.edu

Morehead State University

UPO Box 1100

Morehead, KY 40351-1689

(606) 783-2030

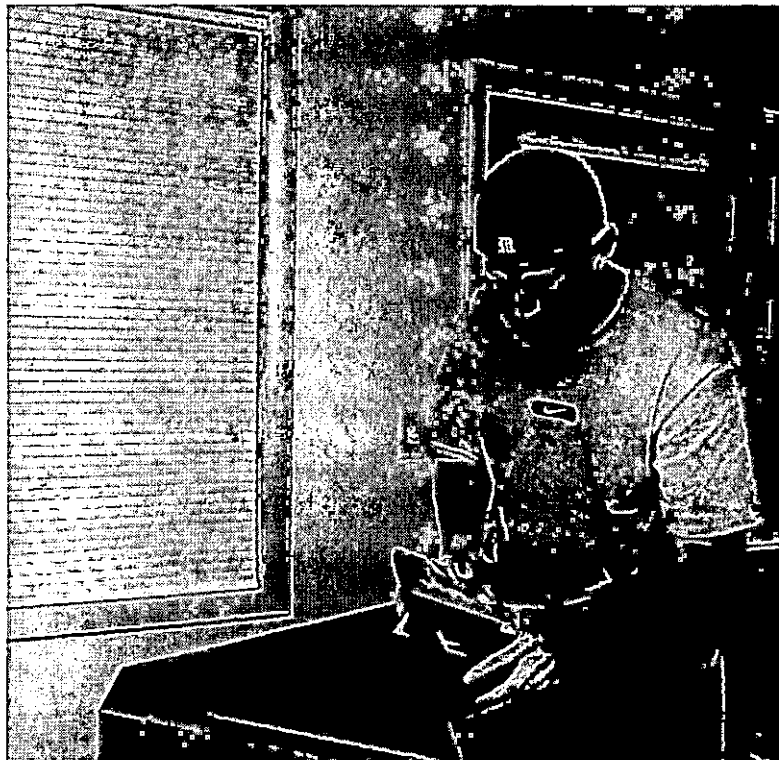
NEW HOUSING COMPLEX OPENS

A projected student population of nearly 3,200 will be living in Morehead State University's 14 residence halls and three family housing complexes this semester. Keeping up with rising student enrollment, the University begins the 2002-03 academic year with more than adequate living space for all students, as the residence facilities total capacity is about 3,660. James Akers, a physical education junior from **Belfry**, unpacks a box as he moves into Eagle Lake Apartments, a new family housing complex on campus. Additional information about living on the MSU campus is available from the Housing Office at (606) 783-2060.

(MSU photo by Tim Holbrook)

8-20-02

MSU is an affirmative action, equal opportunity educational institution.



Photo

University Communications

Pauline Young, Director

www.moreheadstate.edu

Morehead State University

UPO Box 1100

Morehead, KY 40351-1689

(606) 783-2030

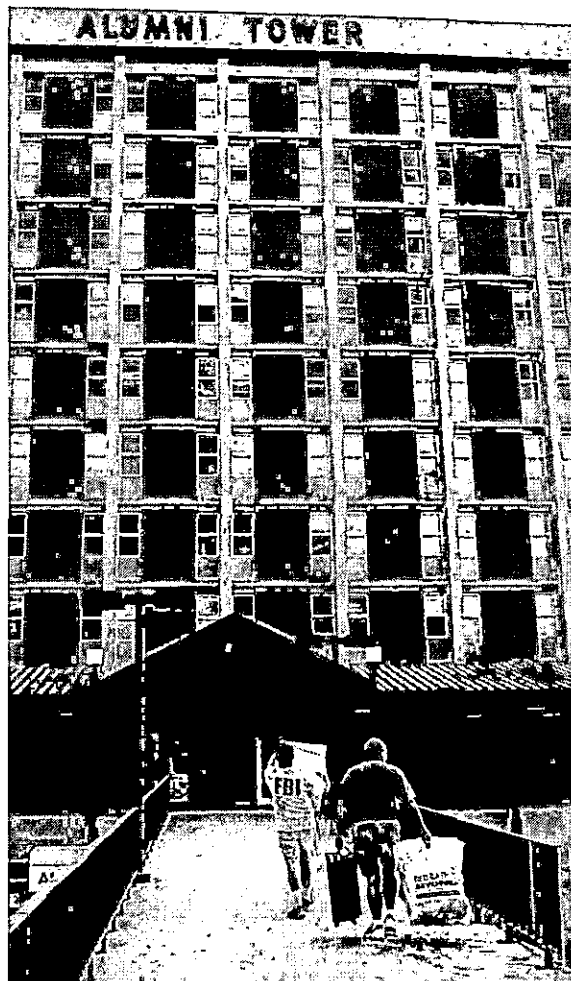
MSU STUDENTS MOVE IN FOR FALL SEMESTER

Students are returning to the Morehead State University campus for the fall 2002 semester. The first chore for many students is moving in. MSU has committed all of its approximately 3,500 residence hall spaces for unmarried students and 110 family housing units, including a new, 28-unit apartment building opened last week. Morehead State University is expecting its largest enrollment ever this semester with a preliminary headcount enrollment of 9,300. The fall semester record is 9,169 students in 1992.

(MSU photo by Tim Holbrook)

8-20-02dlb

MSU is an affirmative action, equal opportunity educational institution.



Photo

University Communications

Pauline Young, Director

www.moreheadstate.edu

Morehead State University

UPO Box 1100

Morehead, KY 40351-1689

(606) 783-2030

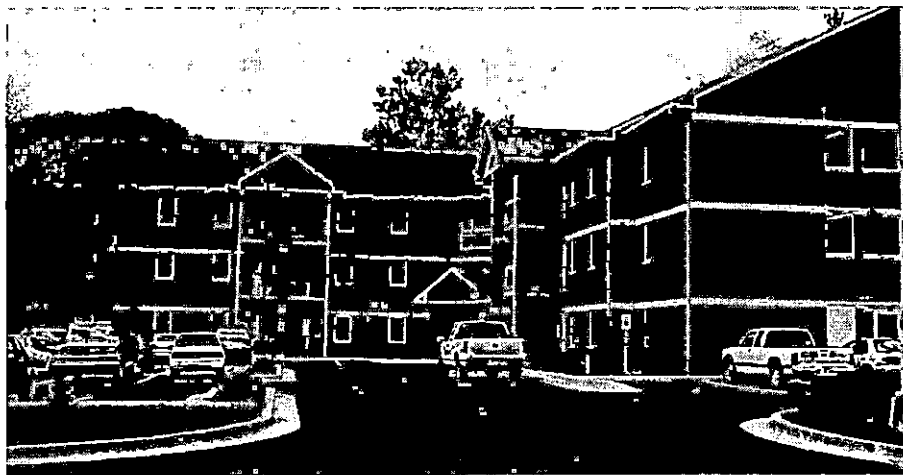
HOUSING COMPLEX OPENS

Morehead State University begins the 2002-03 academic year with housing space for all students who want to live on campus, including in this new family complex, Eagle Lake Apartments. Completed this summer, the apartments feature 22 one-bedroom and six two-bedroom units, secure internal entrances to all rooms, balconies and two conference-size rooms. Appliances such as refrigerator, stove, microwave and dishwasher, as well as paid utilities, cable, phone and Internet access are included in the rental fees. Additional information about living on campus is available from the University's Housing Office at (606) 783-2060.

(MSU photo by Tim Holbrook)

8-20-02sas

MSU is an affirmative action, equal opportunity educational institution.



News

University Communications

Pauline Young, Director

www.moreheadstate.edu

Morehead State University

UPO Box 1100

Morehead, KY 40351-1689

(606) 783-2030

Aug. 19, 2002

FOR IMMEDIATE RELEASE

MOREHEAD, Ky.---Blood is urgently needed nationwide; to help fill those needs, a blood drive will be held Tuesday and Wednesday, Aug 27-28, on the Morehead State University campus.

Sponsored by Central Kentucky Blood Center (CKBC), the drive will be held from 11 a.m.-5 p.m. both days in the Button Drill Room. All donors will receive a free T-shirt.

Blood and blood components are used to treat accident and burn victims, cancer patients and those undergoing surgeries and medical treatments. Most individuals may donate blood every 56 days.

Donors must be at least 17 years of age, weigh a minimum of 100 pounds and be in good general health. The process of giving blood takes less than an hour.

CKBC provides blood to 71 hospitals in 57 Kentucky counties. Additional information is available from Holly Ray at CKBC by calling (800) 775-2522.

####

sas

Aug. 19, 2002

FOR IMMEDIATE RELEASE

MOREHEAD, Ky.---Accomplished roots folk songwriting duo Wishing Chair will take the stage on Friday, Aug. 30, at Morehead State University as part of the “Americana Crossroads Live” concert.

Wishing Chair features multi-instrumentalists Miriam Davidson and Kiya Heartwood. They have released four CDs on the Terrakin Records label, the newest of which is titled “Crow.”

Claiming not to fit into a specific musical genre, Davidson and Heartwood describe their style as roots folk or new folk with a dose of pop, rock and soul and cite influences as varied as from the Beatles to jazz and world music.

A Long Island, N.Y., native raised in Philadelphia, Davidson comes from a family of musicians. Her father, Charles, is a well-known composer and sister Ilana sings opera professionally. Her mother, Frances, is an accomplished pianist and music teacher.

Davidson is a gifted musician whose instrumental talents include banjo, accordion, Hammond B3, flute, guitar, bass and hand percussion. She is learning penny whistle and Irish flute.

She headed the songwriting division at the National Guitar Workshop for many years. After meeting her band mate Heartwood at the organization’s Toronto campus in 1995, they soon formed Wishing Chair. Their name is inspired by a rock formation in Northern Ireland where it is said you can sit and make a wish that will come true. The duo has written a book, “Beginning Songwriting,” published by Workshop Arts and Alfred Press.

Born in Nashville, Tenn., and raised in the central Kentucky region, Heartwood began writing songs and playing guitar at age 12. She played drums in her high school band and sang in school and church choirs. By the late 1970s, Heartwood was playing solo acoustic shows and opening for such artists as the Reel World String Band and Holly Near.

In her late twenties, Heartwood fronted and wrote songs for the roots-rock band Stealin Horses, who were signed to Arista Records. She finished a master’s degree in cultural studies and traditional music at Norwich University’s Vermont College in 1999 and plans to continue her studies of the world’s traditional music while writing and performing with Wishing Chair.

(MORE)

Americana Live in August
2-2-2-2-2

Wishing Chair is scheduled to perform at the "Americana Crossroads Live" concert at 8:15 p.m. at Duncan Recital Hall in Baird Music Hall. They will be preceded by acoustic ensemble Freeman, Bell and Molter at 7:30 p.m. Concluding the concert will be Dulcie Taylor at 9 p.m.

"Americana Crossroads Live," which is free and open to the public, is a presentation of Morehead State Public Radio and the Kentucky Center for Traditional Music (KCTM). Sponsors include Toyota, Kentucky Folk Art Center, Morehead Tourism Commission, Farmer's Mercantile, Poppy Mountain Bluegrass Festival, Root-A-Baker's Bakery and KCTM. Doors open at 7 p.m. to allow the public to view the display tables by performers and concert sponsors.

Additional information is available by calling (606) 783-2001, or on the Web at www.msuradio.com.

####

sas

Photo

University Communications

Pauline Young, Director

www.moreheadstate.edu

Morehead State University

UPO Box 1100

Morehead, KY 40351-1689

(606) 783-2030

FREE CONCERT AT MSU

Wishing Chair, an acclaimed roots folk duo featuring Miriam Davidson and Kiya Heartwood, will perform at the "Americana Crossroads Live" concert on Friday, Aug. 30, at Morehead State University. Wishing Chair will take the stage at Duncan Recital Hall at 8:15 p.m. They will be preceded by Freeman, Bell and Molter at 7:30 p.m. and followed by Dulcie Taylor at 9 p.m. Doors open at 7 p.m. The "Americana Crossroads Live" concert, which is free and open to the public, is a presentation of Morehead State Public Radio and the Kentucky Center for Traditional Music (KCTM). Program sponsors include Toyota, Kentucky Folk Art Center, Morehead Tourism Commission, Farmer's Mercantile, Poppy Mountain Bluegrass Festival, Root-A-Baker's Bakery and KCTM. Additional information is available by calling (606) 783-2001 or visiting the Web site at www.msuradio.com.

(MSU photo)

8-16-02sas



Tips

University Communications

Pauline Young, Director

www.moreheadstate.edu

Morehead State University

UPO Box 1100

Morehead, KY 40351-1689

(606) 783-2030

HIGHLIGHTS AT MOREHEAD STATE UNIVERSITY

(Aug. 25-31)

Tuesday, Aug. 27

Central Kentucky Blood Center blood drive, Button Auditorium, also Aug. 28, 8 a.m.-6 p.m.
Additional information: (800) 775-2522.

Wednesday, Aug. 28

“Real/SurReal: Photographs and Prints by Maureen France, Andrew Au and David Mohallatee,”
art exhibit opening reception, Claypool-Young gallery, 6-8 p.m. Additional information:
(606) 783-5446.

Friday, Aug. 30

Board of Regents Orientation/Work Session, Riggle Room, Adron Doran University Center,
9 a.m. Additional information: (606) 783-2030.

Concert: “Americana Crossroads Live,” Duncan Recital Hall, 7:30 p.m., free;
featuring Freeman, Bell and Moulter, Dulcie Taylor and Wishing Chair.
Additional information: (606) 783-2001.

Saturday, Aug. 31

Eagle Football: MSU vs. Cumberland, Jayne Stadium, 7 p.m. charge.
Additional information: (606) 783-2020.

#####

8-19-02sas

News

University Communications

Pauline Young, Director

www.moreheadstate.edu

Morehead State University

UPO Box 1100

Morehead, KY 40351-1689

(606) 783-2030

August 20, 2002

FOR IMMEDIATE RELEASE

MOREHEAD, Ky. --- Preliminary figures indicate Morehead State University is headed for the highest fall enrollment in the institution's 115-year history.

Dr. Michael Moore, MSU's provost and executive vice president, said Tuesday that reports from the first day of classes projected a headcount enrollment of at least 9,300. Last fall's figure was 9,027 students and the school record is 9,169 from fall 1992.

"We won't have final figures until all of the regional centers and online classes finish enrolling but it is clear that we are showing growth in all areas -- on campus, off campus and distance learning -- and our retention of returning students could be the best ever," Moore said. He predicted the freshman class would be close to last year's record of 1,590.

MSU has committed all of its approximately 3,500 residence hall spaces for unmarried students and 110 family housing units, including a new, 28-unit apartment building opened just last week.

Morehead State was the only public university in Kentucky to meet or exceed all of last year's statewide goals on recruitment, retention and graduation of students as set by the Council on Postsecondary Education.

####

Photo

University Communications

Pauline Young, Director

www.moreheadstate.edu

Morehead State University

UPO Box 1100

Morehead, KY 40351-1689

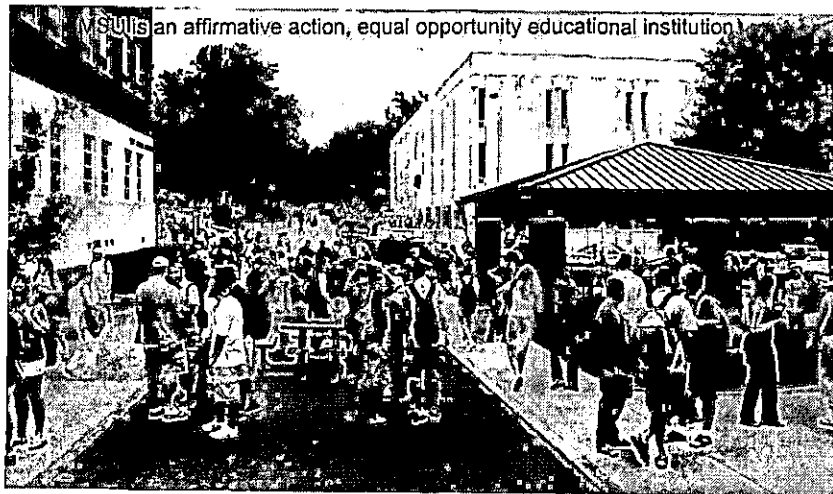
(606) 783-2030

MSU FALL ENROLLMENT HEADED FOR RECORD LEVEL

Preliminary figures indicate Morehead State University is headed for the highest fall enrollment in the institution's 115-year history. Last fall, MSU enrolled 9,027 students, which was second only to the fall 1992 record number of 9,169. Dr. Michael Moore, MSU's provost and executive vice president, said Tuesday that reports from the first day of classes projected a headcount enrollment of at least 9,300. Dr. Moore said final numbers won't be available until all regional centers and online classes finish enrolling but all areas are showing clear growth. He predicted the freshman class would be close to last year's record of 1,590. MSU has committed all of its approximately 3,500 residence hall spaces for unmarried students and 110 family housing units, including a new, 28-unit apartment building opened just last week.

(MSU photo by Tim Holbrook)

8-20-02



Aug. 23, 2002

FOR IMMEDIATE RELEASE

MOREHEAD, Ky.---The Morehead State University Police Department will join state and law enforcement officers in conducting traffic safety checkpoints and saturation patrols as part of a statewide law enforcement campaign to identify and arrest impaired drivers.

Increased enforcement for the "You Drink & Drive. You Lose." campaign will run through Tuesday, Sept. 3, as part of the Governor's Highway Safety Program Kentucky Mobilization.

"These increased checkpoints and patrols will help make the roads safer for everyone on and around campus," said MSU Police Capt. Joe Cline. "If you drink, don't drive. Call a taxi, designate a sober driver or plan on spending the night wherever you choose to celebrate."

According to statistics from the National Highway Traffic Safety Administration, drunk and drugged driving kills more than 16,000 each year. There were 5,853 alcohol-related crashes in Kentucky in 2001, which killed 172 people and injured 3,995. Of the 10 fatal crashes during the 2001 Labor Day holiday period, four were alcohol related.

Police statewide also made nearly 49,000 drunk driving arrests last year, up 11.5 percent from the previous year.

Additional information is available by calling Capt. Cline at (606) 783-2035.

####

dlb

News

University Communications

Pauline Young, Director

www.moreheadstate.edu

Morehead State University

UPO Box 1100

Morehead, KY 40351-1689

(606) 783-2030

Aug. 23, 2002

FOR IMMEDIATE RELEASE

MOREHEAD, Ky.---A plan to establish a rail trail for bicyclists, runners and hikers in Rowan County will be discussed at a public hearing next week.

Daniel Boone Rails-to-Trails, Inc. (DBRT), a non-profit organization, will present its plan at a hearing at the Morehead Tourism Office on Wednesday, Aug. 28, at 6:30 p.m., according to Dr. Eric Jerde, assistant professor of geology at Morehead State University, who is president of the group.

The Rowan County trail would eventually become the central section of the proposed Lexington/Big Sandy Rail Trail, which will begin in Ashland and travel along the old CSX railway to Lexington.

“Our immediate goal is to develop the city of Morehead section to serve as a bicycle trail, a walking trail and a heritage trail that will be paved to accommodate wheelchairs, strollers, tricycles and wagons,” said Mary Jerde, DBRT vice president.

Additional information is available on the Web at www.dbrt.org or by calling Dr. Jerde at (606) 783-5406 weekdays, or (606) 768-9731, at home.

####

dlb

News

University Communications

Pauline Young, Director

www.moreheadstate.edu

Morehead State University

UPO Box 1100

Morehead, KY 40351-1689

(606) 783-2030

Aug. 23, 2002

FOR IMMEDIATE RELEASE

MOREHEAD, Ky.---A newly established race will benefit a Morehead State University scholarship fund.

The Poppy Mountain 5K, the inaugural run of which will be Sept. 21, is sponsored by the MSU student organization Eta Sigma Gamma, a new health education honor society. Proceeds from the entry fees will benefit a scholarship fund in the Department of Health, Physical Education and Sport Sciences.

Registration for the event will be held at MSU's Academic-Athletic Center, beginning at 9:15 a.m. The entry fee is \$8 if received by Sept. 10, and \$12 thereafter. There will be prizes for the top three winners overall, male and female, and T-shirts will be given to the first 95 persons to register.

Runners and walkers will begin at the AAC, continuing 3.1 miles in a route that goes through the MSU campus and into the Morehead residential areas surrounding campus.

Post race "surprises" and refreshments will be featured, including a visit to the Poppy Mountain Bluegrass Festival. Participants, regardless of finish time, may win various raffle prizes.

Entry forms may be picked up in various campus locations, including residence halls and the University Bookstore. Additional information and entry forms are available from Sarah Levin by calling (606) 783-2461.

####

sas

Aug. 23, 2002

FOR IMMEDIATE RELEASE

MOREHEAD, Ky.---A collection of photographic works by a Morehead State University staff member are now on display at a campus gallery.

“Eastern Kentucky: Its People and Its Places” by Judy Carpenter will be displayed in the Strider Gallery of the Claypool-Young Art Building, through Aug. 29.

The exhibit is a collection of many of Carpenter’s 35-mm, medium and large-format photographs taken as class projects for photography courses she completed at MSU. The photos were taken in Rowan, Bath, Morgan, Menifee and Montgomery counties and represent three areas, Carpenter said.

“I have three laws. One law is people - children and adults,” she explained. “The second is churches - both old and new - and different types of churches, all denominations, even one that used to be a laundromat.”

The black and white photos also include images that fall into what Carpenter calls her third law.

“These are things that I personally like to take pictures of,” she said. Featured are old buildings, barns and an old war memorial, among other things.

Carpenter, secretary for the Faculty Senate and the Institute for Correctional Research and Training, has been employed at the University for 23 years. She is a third degree black belt, and teaches karate and self-defense. She lives in the Ore Mines community of Bath County.

Additional information on the exhibit is available from Carpenter at (606) 783-2226.

####

sas

News

University Communications

Pauline Young, Director

www.moreheadstate.edu

Morehead State University

UPO Box 1100

Morehead, KY 40351-1689

(606) 783-2030

Aug. 23, 2002

FOR IMMEDIATE RELEASE

MOREHEAD, Ky.---Recycled Percussion has set out to prove that one man's trash is another man's musical treasure.

The popular ensemble is scheduled to bring its unique style of rhythmic melodies to Morehead State University at 8 p.m. on Wednesday, Sept. 11, in Button Auditorium.

The group uses virtually anything to make their music. Recycled tools, barrels, basement garbage building site leftovers, pots and pans, step ladders and the occasional chainsaw have all been featured as their "instruments," to energize and inspire audiences in more than 40 states across the country.

Band members create an interactive show that is great for all ages, using fresh and fun ways to recycle junk.

Working in the music industry for four years, Recycled Percussion has played with headliner performers to include LL Cool J, Godsmack, Staind and They Might Be Giants. They also have played during halftime shows of both the San Francisco 49ers and the Utah Jazz.

The group has been featured on television shows "Crook and Chase," "Talk Soup," "Chronicle" and on HBO. The band was one of the hottest acts at the National Association for Campus Activities this year, showcasing at seven of the regional conferences nationwide.

Admission to Recycled Percussion's performance is free. Additional information is available from MSU's Student Activities Office by calling (606) 783-2071.

####

sas

Photo

University Communications

Pauline Young, Director

www.moreheadstate.edu

Morehead State University

UPO Box 1100

Morehead, KY 40351-1689

(606) 783-2030

RECYCLED PERCUSSION COMES TO MSU

Recycled Percussion, a musical group that utilizes items found in trash for its instruments, will appear in concert on Wednesday, Sept. 11, at Morehead State University. The free performance, sponsored by MSU's Student Activities Council, will begin at 8 p.m. in Button Auditorium. Additional information is available by calling (606) 783-2031.

(MSU photo)

8-28-02

MSU is an affirmative action, equal opportunity educational institution.

Recycled Percussion



Aug. 23, 2002

FOR IMMEDIATE RELEASE

MOREHEAD, Ky.---An opportunity to explore Kentucky's natural beauty and history will be available this fall for those who enroll in Morehead State University's Elderhostel programs.

Patterned after popular youth hostel programs in Europe, Elderhostel, Inc., a not-for-profit organization, began working with universities in 1975 to provide inexpensive travel and learning opportunities for those 55 and older. Today, more than 250,000 participate in 10,000 programs each year in more than 100 countries.

MSU is working with Elderhostel to sponsor four programs this fall to give older adults affordable, quality adventures throughout the state. The locations to be explored are:

- **Cumberland Falls State Park Resort** (Aug. 25-30) – Enjoy an entire week of canoeing at Laurel Lake, a riverboat ride, hiking in the scenic Beaver Creek Wilderness area, white-water rafting on the Cumberland River, as well as learning and listening as expert guides provide information about Kentucky's historic waterways and navigable streams.
- **Natural Bridge State Park** (Sept. 15-20) – Explore Natural Bridge and the amazing wildlife of the Red River Gorge, river, and cliff-line habitat. Learn about geologic forces that created the gorge and many natural bridges. Hike to breathtaking views as a naturalist shows you the forest and river ecology and wildflowers. Day hikes range from 2 to 8 miles.
- **Lexington** (Sept. 22-27) – Experience the heart of the Bluegrass as you tour the rolling hills, white fences and premier horse farms of the region. Visit the Red Mile, Keeneland Race track and the Kentucky Horse Park while you learn about the area's beautifully maintained historic homes and famous families who helped shape our heritage. Tour the home of first lady Mary Todd Lincoln, Waveland home of the Bryan family who accompanied Daniel Boone through the Cumberland Gap and Ashland, the Henry Clay estate.
- **Greenbo State Resort Park** (Nov. 3-8) -- Discover the rich, isolated culture of Eastern Kentucky and Appalachia through first-hand narratives, lively lectures and anecdotes. Experience the work of Jesse Stuart, a world famous writer, educator, conservationist and spokesman for his native W-Hollow. Also, study the natural mountain beauty of the surroundings, as well as tour spectacular underground caverns.

(MORE)

Elderhostel Programs
2-2-2-2.

On tap for the spring will be outings for Kentucky Explorer, March 2-7; Kentucky's Celebration of Music, Appalachia Uncovered or The Mysterious World In and Under the Mountains, March 16-21; The Kentucky Bluegrass – Horses, Heroes and Homes, March 30-April 4 and May 4-9; Natural Bridges and Wonderful Wildlife, April 13-18; The Civil War in Kentucky: Major Figures and Events, May 11-16; My Old Kentucky Home, June 19-22; From Old Time Ballads to Dances and Bluegrass, May 16-24; and Appalachian Celebration, June 23-28.

MSU is part of Elderhostel's Eastern area office. Interested individuals may visit the organization's Web site at www.elderhostel.org or call (800) 895-0727 to request a copy of the latest catalog of programs.

Additional information regarding enrollment, cost and other travel requirements in MSU's programs is available by calling Tina Stafford, MSU extended campus coordinator, at (606) 783-2605 or (800) 585-6781, option 3.

####

dlb

Aug. 23, 2002

FOR IMMEDIATE RELEASE

PRESTONSBURG, Ky.---Can your small business qualify for federal contracting opportunities?

A workshop to educate local business owners about those opportunities is being offered by Morehead State University's East Kentucky Small Business Development Center.

"The Benefits of HUBZone Certification" will be held Wednesday, Sept. 4, at the Big Sandy Area Development District Center, 100 Resource Drive in Prestonsburg, from 9 a.m. to 12:30 p.m.

The HUBZone (Historically Underutilized Business Zone) Empowerment Contracting Program is a new initiative designed to stimulate economic development by providing federal contracting opportunities to small businesses in eligible areas. Many of the Kentucky counties eligible as HUBZones are located in eastern Kentucky.

The program is a place-based federal contracting program serving new market communities with low income or high unemployment. It provides both federal prime contract and subcontract benefits. It will help to empower distressed areas, build substantial communities and promote long-term economic development and growth.

Admission is free, but advance registration is necessary because of limited seating.

Training programs sponsored or co-sponsored by SBDC are available to all individuals without regard to race, color, sex, creed or national origin. Special arrangements for those with disabilities will be made if requested in advance.

Additional information and registration are available by calling Judy Hankins, EKSBDC training coordinator, at (606) 432-5848, or by e-mail to judhank@yahoo.com.

#####

dlb

Aug. 23, 2002

FOR IMMEDIATE RELEASE

MOREHEAD, Ky.---Blood donors can now make the most of their donations, thanks to a new collection system that allows more blood cells to be given at a single visit.

With the Automated Blood Collection (ABC) technology of cell separator equipment, donors may give selectively only those blood components that are needed for transfusion, such as red blood cells, while the rest of the blood is returned immediately to their bodies. This enables one to give two pints of red blood cells during the same donation time.

According to the Central Kentucky Blood Center in Lexington, red blood cells are the most used part of the blood, and it is where local communities often experience shortages.

The CKBC will bring the ABC technology to Morehead State University for a blood drive on Tuesday and Wednesday, Aug. 27 and 28, in Button Drill Room.

The ABC process takes about 20 minutes longer than the regular blood donation time. Donors must then wait 112 days until their next donation instead of the usual 56 days.

“Now you can do in one visit what it would normally take two visits to do,” said Holly Ray, CKBC donor recruitment specialist. “ABC is designed to save you time while providing a double donation for those patients who rely on the help of volunteer blood donors.”

The requirements for ABC are the same as for whole blood, with the following additions: donors must be at least age 18; weigh at least 150 pounds and be 5 feet 5 inches if female; weigh at least 130 pounds and be at least 5 feet 1 inch if male and have a 40 percent or greater hematocrit, which indicates adequate iron level in the blood.

Persons with type “O” blood are particularly needed as this is the most used type, whether they try the ABC system or make a standard donation.

Additional information on the ABC process and the MSU blood drive is available by calling Ray at (800) 775-2522.

####

sas

News

University Communications

Pauline Young, Director

www.moreheadstate.edu

Morehead State University

UPO Box 1100

Morehead, KY 40351-1689

(606) 783-2030

Aug. 23, 2002

FOR IMMEDIATE RELEASE

MOREHEAD, Ky.---A special juried group exhibition of the works of three artists will be featured at Morehead State University.

“Real/SurReal: Photographs and Prints by Maureen France, Andrew Au and David Mollahatee,” will be displayed in the main gallery of the Claypool-Young Art Building, Aug. 28-Sept. 27.

A reception to open the exhibition will be held from 6-8 p.m. on Wednesday, Aug. 28, in the gallery, featuring live music and refreshments. The event is free and open to the public.

France, whose black and white silver gelatin prints tell stories of the odd in everyday life, is an associate professor at the University of Cincinnati. She will give an artist’s lecture on Friday, Sept. 27, at 12:40 p.m. in the art building.

The works of Mollahatee, a professor at Eastern Kentucky University in Richmond, features intaglio prints focusing on iconic symbolism.

Au, of Washington, D.C., also is an intaglio printmaker who creates surreal and complexly layered images that illustrate, he says, “the idea of Utopia and the unattainable ideal.”

The gallery, which serves the community as well as the University’s service region, is open Monday through Friday, from 8 a.m. until 4 p.m. or by appointment. There is no admission charge.

Additional information is available from gallery director Jennifer Reis by calling (606) 783-5446.

#####

sas

ART EXHIBITION OPENS AT MSU

A special art exhibition featuring three artists will be on display in the main gallery of Claypool-Young Art Building on the Morehead State University campus, Aug. 28-Sept. 27. An opening reception for "Real/SurReal: Photographs and Prints by Maureen France, Andrew Au and David Mohallatee," will be held from 6-8 p.m. on Wednesday, Aug. 28, in the gallery. The exhibition includes France's black and white silverprint "Boxer with Plane." Gallery hours are 8 a.m. until 4 p.m. weekdays. There is no charge for viewing the exhibition or the opening reception. Additional information is available from gallery director Jennifer Reis at (606) 783-5446.

(MSU photo)

8-23-02

MSU is an affirmative action, equal opportunity educational institution.



News

University Communications

Pauline Young, Director

www.moreheadstate.edu

Morehead State University

UPO Box 1100

Morehead, KY 40351-1689

(606) 783-2030

Aug. 26, 2002

FOR IMMEDIATE RELEASE

MOREHEAD, Ky.---Don Rigsby, director of Morehead State University's Kentucky Center for Traditional Music, has been nominated for two awards by the International Bluegrass Music Association (IBMA).

Rigsby, 34, and his fellow band members in Rock County are in the running for "Emerging Artists of the Year". Rigsby and Dudley Connell were nominated for "Recorded Event of the Year" as artists and producers of "Another Saturday Night," a duet album on the Sugar Hill label.

The 13th annual IBMA awards show will be held Thursday, Oct. 17, at the Kentucky Center for the Arts in Louisville. It will be co-hosted by Ricky Skaggs and Patty Loveless.

Rigsby is no stranger to awards as a Bluegrass singer and instrumentalist. He was the 2001 "Male Vocalist of the Year" by the Society for the Preservation of Bluegrass Music in America (SPBGMA). The MSU alumnus and Elliott County resident shared two IBMA awards while performing with Longview and also sang on a Grammy-winning album by rocker John Fogerty.

"We are very proud of the recognition Don is receiving as a professional musician," said Keith Kappes, MSU's vice president for university relations. "His success and respect in the music industry are great assets to his work in building our program in traditional music."

####

Media Advisory

University Communications

Pauline Young, Director

www.moreheadstate.edu

Morehead State University

UPO Box 1100

Morehead, KY 40351-1689

(606) 783-2030

EVENT: Board of Regents Work Session
DATE: Friday, Aug. 30, 2002
TIME: 8:30 a.m.
SITE: Sheltowee Trail Country Club

Morehead State University's Board of Regents will conduct an orientation for new members and hold a work session to discuss items of interest for the coming year. On the agenda will be the 2002-03 Planning and Operating Budget and the University's Microcomputer Acquisition Program.

####

Media representatives planning to attend the session should call the Office of University Communications at (606) 783-2030 before noon on Thursday, Aug. 29, so that sufficient support materials will be available.

8-26-02py

Tips

University Communications

Pauline Young, Director

www.moreheadstate.edu

Morehead State University

UPO Box 1100

Morehead, KY 40351-1689

(606) 783-2030

HIGHLIGHTS AT MOREHEAD STATE UNIVERSITY

(Sept. 1-7)

Monday, Sept. 2

Labor Day holiday; no classes or office hours.

Wednesday, Sept. 4

Comedian Brad Lowery, Button Auditorium, 8 p.m., free. Additional information:
(606) 783-2071.

Thursday, Sept. 5

Art Exhibition: "New Deal Murals in Kentucky Post Offices," color photos of 33 paintings on the walls of Kentucky post offices, Kentucky Folk Art Center, through Nov. 3, charge. Opening reception: Sept. 5, 6 p.m., free. Gallery hours: Monday-Saturday, 9 a.m.-5 p.m.; Sunday, 1-5. Additional information: (606) 783-2204.

####

8-26-02sas

MSU GAINS NEW POLICE OFFICER

David C. Gavin is a new officer with the Morehead State University Police Department. He began his law enforcement career in Portsmouth, Va., where he worked in intake and booking, as a street officer and with various programs including DARE and Scared Straight. Officer Gavin, a graduate of the Hampton Roads Regional Academy of Criminal Justice, has been trained in drug abuse, recognition and enforcement, domestic disturbances, sexual assault and dealing with gangs. He recently completed training at the Department of Criminal Justice Police Academy in Richmond. Carol Johnson, assistant to MSU President Ronald G. Eaglin, issued the oath of the position.

(MSU photo by Tim Holbrook)

8-27-02py

MSU is an affirmative action, equal opportunity educational institution.



Aug. 27, 2002

FOR IMMEDIATE RELEASE

MOREHEAD, Ky.---The Kentucky Folk Art Center has announced the opening of “New Deal Murals in Kentucky Post Offices” on Thursday, Sept. 5. The exhibition, which is on loan courtesy of the University of Louisville, is recognized for historic and artistic reasons.

During the Great Depression, the U.S. government subsidized several art programs with the primary goal of providing jobs for unemployed artists. Many of these were “public art” projects, including one that was intended to provide “tasteful work of good quality to those who had no experience of fine art, and for raising cultural standards, especially in rural areas.” The mural project resulted in the placement of some interesting paintings in some of the most public places, the post office.

Through this project, many people who did not normally encounter original fine art were exposed to at least one painting during their weekly routine. The murals provided scenes of local history or daily life designed to stimulate patriotism and a sense of community, as well as to keep pride and optimism alive during difficult times.

During World War II, many of the post office paintings were ignored, neglected or destroyed. One that survived is located in Morehead’s former post office, now City Hall, on Main Street, a block from the Kentucky Folk Art Center.

The KFAC exhibit is an effort to record and preserve the photographs of the 33 post office murals that remain in Kentucky.

The exhibition opens with a reception from 6 – 8 p.m., on Thursday, Sept. 5, at Kentucky Folk Art Center in Morehead. It is free and open to the public.

The Kentucky Folk Art Center is a cultural and educational service of Morehead State University. Located at 102 West First Street in Morehead, the Center is open Monday-Saturday, 9 a.m. to 5 p.m., and Sundays, 1-5 p.m. Additional information is available from the Web site at www.kyfolkart.org, or by calling (606) 783-2204.

#####

KFAC EXHIBIT HIGHLIGHTS MURALS

The Kentucky Folk Art Center will exhibit "New Deal Murals in Kentucky Post Offices," Sept. 5 through Nov. 3. A free, public reception will be held on Thursday, Sept. 5, from 6-8 p.m. at the center to open the show. The exhibition, on loan from the University of Louisville, includes photographs of 33 post office murals. These works were produced when the U.S. government subsidized several art programs during the Great Depression. This photograph, painted by Frank Weathers Long remains on the wall of Morehead's City Hall, formerly the post office. The Kentucky Folk Art Center is a cultural and educational service of Morehead State University.

(MSU photo by Tim Holbrook)

8-27-02py

MSU is an affirmative action, equal opportunity educational institution.



Aug. 27, 2002

FOR IMMEDIATE RELEASE

MOREHEAD, Ky.---The Caudill College of Humanities has published a multi-year strategic plan in a document titled, "The Response: Demonstration of Support for the Morehead State University Strategic Plan 2001-2006 "Pride and Promise." The plan was the result of a yearlong task force initiated by Dean Michael Seelig and involving more than 60 Humanities faculty colleagues, librarians and selected staff members from units throughout the campus.

"The most important aspect of the plan was, that from its very conceptualization, it involved a faculty-administration partnership in collaboration and was not an administratively developed plan hoping for faculty support," Dr. Seelig said.

The essence of the plan required 84 separate objectives to be focused on in the next four years within 10 major areas: initiating and integrating college-level planning, assessment and budgeting; technology integration, distance learning and library inclusion; student enrollment, retention and general education; grant writing, fund raising and alumni networking; community partnering and campus and regional culture; diversity and international experiences; undergraduate and graduate programs; Web marketing and design; teacher education programs; and recruitment, development and retention of faculty and staff.

"The plan is not only comprehensive and strategic," explained Dr. Seelig, "but its multi-year dimension makes it an expression of the College's vision as to what it wishes to accomplish and become." Each of the plan's objectives are directly tied to one or more of the five general goals of the University Strategic Plan, and each objective will guide the development of comprehensive departmental plans.

The implementation, monitoring and evaluation of the plan will be enhanced by the establishment of a college-level planning, assessment, budgeting and evaluation advisory committee comprised of departmental faculty representatives and key staff members representing support units on campus that are critical to the plan's overall success. The plan is available in hard copy and will be added to the College's Web page.

(MORE)

“The Response” prepared by the Caudill College of Humanities documents a critical piece of the University’s Strategic Planning process which is the implementation of specific objectives at the ‘grass roots’ level of the institution, according to Beth Patrick, associate vice president of planning and technology.

“Development and implementation of effective college-level plans are essential for positioning MSU to reach its broader goals and objectives defined in the University Strategic Plan and ultimately support the education goals of the Commonwealth as defined in the Council on Postsecondary Education’s Action Agenda and 2020 Vision,” Patrick said.

“Dean Seelig and the faculty should be commended for this outstanding collaborative work that documents an action plan for their college that is comprehensive, strategic, broad-based, measurable and developed in support of the University’s strategic plan,” she added.

The Dean will be held accountable for successful implementation through an annually published “Report Card” with ratings determined by the faculty planning council.

“This is a very exciting time for all of us within the Caudill College,” Dr. Seelig said, “and a review of the plan will reveal the level of commitment to progressiveness and excellence that our faculty and staff uphold.”

Additional information is available from the Caudill College of Humanities by calling (606) 783-2650.

#####

Aug. 27, 2002

FOR IMMEDIATE RELEASE

MOREHEAD, Ky.---Kentucky-based hip-hop band, Nappy Roots, will bring its southern-flavored brand of hip-hop music to Morehead State University this fall.

The six-man group from Bowling Green will perform at MSU's Academic-Athletic Center at 8 p.m. on Thursday, Oct. 10. The concert, sponsored by the University's Student Activities Council and J.Dub Entertainment, also will include performances by Bravo and Lyrixx.

Nappy Roots is touring the country after releasing its smash Atlantic Records debut CD, "Watermelon, Chicken & Gritz," in February. Backed by hit singles, "Awnaw" and "Po' Folks," the CD is currently ranked among the top 50 albums in the nation by Billboard magazine.

Originally signed by Atlantic in 1998, the group started their own music store in Bowling Green and produced their own independent record before releasing their music commercially. Critics note that Nappy Roots is a rarity in its genre because they emerged on their own and had no previous association with a solely hip-hop recording label.

The group recently played before a packed house at the Rock and Rock Hall of Fame in Cleveland and was nominated for MTV2 music award. They are wrapping up the summer on the Sprite Liquid Mix Tour with Jay-Z, 3LW and Hoobastank.

Concert tickets, which go on sale Monday, Sept. 9, are \$15 for full-time MSU students and \$20 for non-students.

Tickets can be purchased at the MSU Student Activities Office on campus and all MSU extended campus centers; Main Street Music and Martin's Department Store in Morehead; Back's Auto Auction in Mt. Sterling; Jam's in Winchester's K-Mart Shopping Center; Ken's Market in Maysville; Rose Department Store in Jackson; and James Family Outfitters in Grayson.

Additional information is available by calling the Student Activities Council at (606) 783-2071.

####

dlb

NAPPY ROOTS TO BRING HIP-HOP TO MSU IN OCTOBER

Kentucky-based hip-hop band, Nappy Roots, will perform its southern-flavored brand of hip-hop music at Morehead State University's Academic-Athletic Center at 8 p.m. on Thursday, Oct. 10. The concert, sponsored by the University's Student Activities Council and J.Dub Entertainment, also will include performances by Bravo and Lyrixx. Tickets, which go on sale Monday, Sept. 9, are \$15 for full-time MSU students and \$20 for non-students. They can be purchased at the MSU Student Activities office on campus and all MSU extended campus centers; Main Street Music and Martin's Department Store in Morehead; Back's Auto Auction in Mt. Sterling; Jam's in Winchester's K-Mart Shopping Center; Ken's Market in Maysville; Rose Department Store in Jackson; and James Family Outfitters in Grayson. Additional information is available by calling the Student Activities Council at (606) 783-2071.

(MSU photo)

8-23-02

MSU is an affirmative action, equal opportunity educational institution.



Ron Clutch Big V B. Stille R. Prophet Scales Skinny DeVille

News

University Communications

Pauline Young, Director

www.moreheadstate.edu

Morehead State University

UPO Box 1100

Morehead, KY 40351-1689

(606) 783-2030

Aug. 29, 2002

FOR IMMEDIATE RELEASE

PRESTONSBURG, Ky.---Are you confused about the tax forms and deadline requirements for small businesses?

A two-day workshop on "Small Business Taxes" being offered by Morehead State University's East Kentucky Small Business Development Center may have answers to all your questions

The free training workshop will be held Monday and Tuesday, Sept. 16 and 17, at the Big Sandy Area Development District Center, 100 Resource Drive in Prestonsburg, from 6-8:30 p.m.

Participants will gain invaluable information about the various tax forms, licenses and documentation needed to maintain the records for your business. A certified public accountant will be on hand to answer all questions on both evenings.

Admission is free, but advance registration is necessary because of limited seating.

Training programs sponsored or co-sponsored by SBDC are available to all individuals without regard to race, color, sex, creed or national origin. Special arrangements for those with disabilities will be made if requested in advance.

Additional information and registration are available by calling Judy Hankins, EKSBDC training coordinator, at (606) 432-5848, or by e-mail to judhank@yahoo.com.

####

dlb

News

University Communications

Pauline Young, Director

www.moreheadstate.edu

Morehead State University

UPO Box 1100

Morehead, KY 40351-1689

(606) 783-2030

Aug. 29, 2002

FOR IMMEDIATE RELEASE

MOREHEAD, Ky.---Two radio stations have added Morehead State University's "Americana Crossroads Live" series to their entertainment lineup.

KDHS with the Delta/Greely School District in Delta Junction, Alaska, and Northeastern Oklahoma A & M College in Miami, Okla., recently began including the series, which highlights Bluegrass, folk, and other classic American styles of music.

Morehead State Public Radio (MSPR) and the University's Kentucky Center for Traditional Music sponsor the monthly performance. Paul Hitchcock, MSPR program and production director, coordinates the show.

"Americana Crossroads Live" concerts are held the last Friday of each month in Duncan Recital Hall within Baird Music Hall on the Morehead State University campus. Recordings of the free concerts are then broadcast on the radio program.

A total of six stations now carry "Americana Crossroads Live," including CBLY in Nanaimo, British Columbia, Canada, and the MSPR network affiliates.

Additional information on MSPR programming is available by calling at (606) 783-2001.

####

8-29-02sas

Media Advisory

University Communications

Pauline Young, Director

www.moreheadstate.edu

Morehead State University

UPO Box 1100

Morehead, KY 40351-1689

(606) 783-2030

EVENT: Board of Regents Orientation
DATE: Friday, Aug. 30, 2002
TIME: 8:30 a.m.
SITE: Sheltowee Trail Country Club

Morehead State University's Board of Regents will conduct an orientation for new members and hold a work session to discuss items of interest for the coming year. On the agenda will be the 2002-03 Planning and Operating Budget and the University's Microcomputer Acquisition Program.

Following this session, Board members will join the University's administrative staff to review plans for the coming year.

At the conclusion, the Board will meet to discuss business matters. If six members are present, this could constitute a regularly called meeting.

####

Media representatives planning to attend the session should call the Office of University Communications at (606) 783-2030, so that sufficient support materials will be available.

8-29-02py

HIGHLIGHTS AT MOREHEAD STATE UNIVERSITY

(Jan. 1 – Dec. 31, 2003)

January

Jan. 1, New Year's Day holiday, no office hours.

Jan. 8, Campus-wide Convocation, location/time, TBA, division, college and department meetings, business days. Additional information: (606) 783-2002.

Jan. 9, Class scheduling in academic departments, business days, also Jan. 10. Additional information: (606) 783-2002.

Jan. 9, Basketball: Eagles vs. Eastern Illinois, Academic-Athletic Center, 7 p.m., charge. Additional information: (606) 783-2087.

Jan. 11, Basketball: Lady Eagles and Eagles vs. Southeast Missouri, Academic-Athletic Center, 5:30 and 7:30 p.m., charge. Additional information: (606) 783-2088.

Jan. 13, Spring 2003 classes begin; term ends May 9. Additional information: (606) 783-2008.

Jan. 13, Basketball: Lady Eagles vs. Eastern Illinois, Academic-Athletic Center, 7 p.m., charge. Additional information: (606) 783-2126.

Jan. 20, Dr. Martin Luther King, Jr. Holiday; no classes or office hours.

Jan. 20, Basketball: Lady Eagles and Eagles vs. Tennessee State, Academic-Athletic Center, 5:30 and 7:30 p.m., charge. Additional information: (606) 783-2088.

Jan. 29, Art Exhibition: "Pop, Rock & Roll: Popular culture in Contemporary Art," Claypool-Young Art Building, main gallery, through Feb. 28. Opening reception at gallery, 6-8 p.m. Jan. 29, free. Additional information: (606) 783-2766.

Jan. 30, Basketball: Eagles vs. Austin Peay, Academic-Athletic Center, 7 p.m., charge. Additional information: (606) 783-2087.

Jan. 31, "Americana Crossroads Live," Duncan Recital Hall, 7:30 p.m., free. Additional information: (606) 783-2001.

February

Feb. 1, Rifle: MSU vs. Nebraska, Button Building, time, TBA. Additional information (606) 783-2088.

(MORE)

2003 Calendar

2-2-2-2-2

Feb. 1, Basketball: Eagles vs. Kentucky Christian, Academic-Athletic Center, 7 p.m., charge. Additional information: (606) 783-2087.

Feb. 1, Second Annual Winter Avalanche of Bluegrass, featuring IIIrd Tyme Out, Button Auditorium, 7:30 p.m. Additional information: (606) 783-9001.

Feb. 3, Basketball: Lady Eagles vs. Austin Peay, Academic-Athletic Center, 7 p.m., charge. Additional information: (606) 783-2126.

Feb. 10, Basketball: Eagles vs. Tennessee Tech, Academic-Athletic Center, 7 p.m., charge. Additional information: (606) 783-2087.

Feb. 13, Concert Band Clinic, Baird Music Hall, through Feb. 16. Additional information: (606) 783-2473.

Feb. 15, Basketball: Eagles vs. Eastern Kentucky University, Academic-Athletic Center, 7 p.m., charge. Additional information: (606) 783-2087.

Feb. 17, Basketball: Lady Eagles vs. Eastern Kentucky University, Academic-Athletic Center, 7 p.m., charge. Additional information: (606) 783-2126.

Feb. 20, Art Exhibition: "Behind the Walls: Art in Confinement," Kentucky Folk Art Center, through May 31, charge. Opening reception, Feb. 20, 6-8 p.m., free. Additional information: (606) 783-2204.

Feb. 21, Baseball: Eagles vs. Indiana, Allen Field, TBA. Additional information: (606) 783-2881.

Feb. 22, Basketball: Lady Eagles and Eagles vs. Murray State, Academic-Athletic Center, 5:30 and 7:30 p.m., charge. Additional information: (606) 783-2088.

Feb. 24, Basketball: Lady Eagles vs. Tennessee-Martin, Academic-Athletic Center, 7 p.m., charge. Additional information: (606) 783-2126.

Feb. 26, Softball: Lady Eagles vs. Louisville, 2 p.m. Additional information: (606) 783-5283.

Feb. 26, Baseball: Eagles vs. Cedarville, Allen Field, 3 p.m. Additional information: (606) 783-2881.

Feb. 28, "Americana Crossroads Live," Duncan Recital Hall, 7:30 p.m., free. Additional information: (606) 783-2001.

March

March 4, Baseball: Eagles vs. Dayton, Allen Field, 1 p.m. Additional information: (606) 783-2881.

March 5, Baseball: Eagles vs. Campbellsville, Allen Field, 3 p.m. Additional information: (606) 783-2881.

(MORE)

2003 Calendar

3-3-3-3-3

March 7, Baseball: Eagles vs. Toledo, Allen Field, TBA. Additional information:
(606) 783-2881.

March 8, Tennis: Lady Eagles and Eagles vs. IUPUI, Sadler Tennis Courts, 9:30 a.m.
Additional information: (606) 783-5408.

March 8, Baseball: Eagles vs. Toledo, Allen Field, TBA. Additional information:
(606) 783-2881.

March 10, Baseball: Eagles vs. Northern Illinois, Allen Field, TBA. Additional information:
(606) 783-2881.

March 11, Baseball: Eagles vs. Youngstown State, Allen Field, 3 p.m. Additional information:
(606) 783-2881.

March 12, Baseball: Eagles vs. Youngstown State, Allen Field, 1 p.m. Additional information:
(606) 783-2881.

March 12, Art Exhibition: Burley-Coal High School Exhibition and Competition, Claypool-
Young Art Building, main gallery, through March 19. Additional information:
(606) 783-2766.

March 13, Theatre Production: "Forty-Second Street," Button Auditorium, 8 p.m., through
March 15, charge. Additional information: (606) 783-2170.

March 13, Rifle: Eagles at NCAA Finals, through March 15. Additional information:
(606) 783-2088.

March 14, Softball: Lady Eagles host MSU Invitational, TBA, through March 16. Additional
information: (606) 783-5283.

March 14, Baseball: Eagles vs. Cleveland State, Allen Field, 2 p.m. Additional information:
(606) 783-2881.

March 15, Baseball: Eagles vs. Cleveland State, Allen Field, 3 p.m. Additional information:
(606) 783-2881.

March 16, Baseball: Eagles vs. Cleveland State, Allen Field, noon. Additional information:
(606) 783-2881.

March 18, Founders Day, campus. Additional information: (606) 783-2030.

March 19, High School Art Day, Claypool-Young Art Building, TBA. Additional information:
(606) 783-2766.

March 22, Tennis: Lady Eagles and Eagles vs. Tennessee Tech, Sadler Courts, 11 a.m.
Additional information: (606) 783-5408.

(MORE)

2003 Calendar

4-4-4-4-4

March 22, Baseball: Eagles vs. IPFW, Allen Field, 3 p.m. Additional information:
(606) 783-2881.

March 23, Baseball: Eagles vs. IPFW, Allen Field, noon. Additional information:
(606) 783-2881.

March 24, Spring Break, no classes or office hours, through March 28.

March 28, "Americana Crossroads Live," Duncan Recital Hall, 7:30 p.m., free. Additional
information: (606) 783-2001.

March 29, Softball: Lady Eagles vs. Eastern Illinois, 1 p.m., also March 30. Additional
information: (606) 783-5283.

April

April 1, Softball: Lady Eagles vs. Dayton, 2 p.m. Additional information: (606) 783-5283.

April 2, Tennis: Lady Eagles and Eagles vs. Cumberland, Sadler Courts, 2 p.m. Additional
information: (606) 783-5408.

April 5, Tennis: Lady Eagles and Eagles vs. IPFW, Dayton, Sadler Courts, 8 a.m. and 2 p.m.
Additional information: (606) 783-5408.

April 5, Baseball: Eagles vs. Eastern Illinois, Allen Field, 2 p.m. Additional information:
(606) 783-2881.

April 6, Tennis: Lady Eagles and Eagles vs. Tennessee-Martin, Sadler Courts, 2 p.m. Additional
information: (606) 783-5408.

April 6, Baseball: Eagles vs. Eastern Illinois, Allen Field, 2 p.m. Additional information:
(606) 783-2881.

April 7, Sophomore Art Exhibition, Claypool-Young Art Building, main gallery, through
April 18. Opening reception, April 9, 6-8 p.m.; free. Additional information:
(606) 783-2766.

April 8, Theatre Production: "A Midsummer Night's Dream," Lucille Caudill Little Theatre,
8 p.m., through April 12, charge. Additional information: (606) 783-2170.

April 9, Tennis: Lady Eagles and Eagles vs. Eastern Kentucky University, Sadler Courts, 2 p.m.
Additional information: (606) 783-5408.

April 9, Softball: Lady Eagles vs. Eastern Kentucky University, 3 p.m. Additional information:
(606) 783-5283.

April 12, Softball: Lady Eagles vs. Tennessee State, 1 p.m. Additional information:
(606) 783-5283.

(MORE)

2003 Calendar
5-5-5-5

April 13, Softball: Lady Eagles vs. Tennessee State, 1 p.m. Additional information:
(606) 783-5283.

April 15, Baseball: Eagles vs. Marshall University, Allen Field, 6 p.m. Additional information:
(606) 783-2881.

April 18, Baseball: Eagles vs. Tennessee Tech, Allen Field, 2 p.m. Additional information:
(606) 783-2881.

April 19, Baseball: Eagles vs. Tennessee Tech, Allen Field, 2 p.m. Additional information:
(606) 783-2881.

April 19, Softball: Lady Eagles vs. Tennessee-Martin, 1 p.m. Additional information
(606) 783-5283.

April 20, Softball: Lady Eagles vs. Tennessee-Martin, 1 p.m. Additional information
(606) 783-5283.

April 22, Baseball: Eagles vs. Cumberland, Allen Field, 6 p.m. Additional information:
(606) 783-2881.

April 25, "Americana Crossroads Live," Duncan Recital Hall, 7:30 p.m., free. Additional
information: (606) 783-2001.

April 26, Annual Spring Gala, campus. Additional information: (606) 783-2022.

April 28, Senior Art Exhibition, Claypool-Young Art Building, main gallery, through May 9.
Opening reception: April 30, 6-8 p.m., free. Additional information: (606) 783-2766.

May

May 3, Second Annual Appalachian Acoustic Instrument Expo, Carl Perkins Center,
noon-6 p.m.; also May 4, 1-5 p.m. Additional information: (606) 783-9001.

May 3, Baseball: Eagles vs. Murray State, Allen Field, 2 p.m. Additional information:
(606) 783-2881.

May 4, Baseball: Eagles vs. Murray State, Allen Field, 2 p.m. Additional information:
(606) 783-2881.

May 9, Associate degree and baccalaureate degree nursing programs pinning ceremony, Button
Auditorium, 7:30 p.m. Additional information: (606) 783-2296.

(MORE)

2003 Calendar

6-6-6-6-6

May 10, Spring 2003 Commencement, Academic-Athletic Center, 10:30 a.m. Additional information: (606) 783-2008.

May 13, Baseball: Eagles vs. Belmont, Allen Field, 2 p.m. Additional information: (606) 783-2881.

May 17, Baseball: Eagles vs. Eastern Kentucky University, Allen Field, 2 p.m. Additional information: (606) 783-2881.

May 18, Baseball: Eagles vs. Eastern Kentucky University, Allen Field, 2 p.m. Additional information: (606) 783-2881.

May 26, Memorial Day holiday, no classes or office hours.

May 30, "Americana Crossroads Live," Duncan Recital hall, 7:30 p.m., free. Additional information: (606) 783-2001.

June

June 9, Summer I 2003 begins, term ends July 3. Additional information: (606) 783-2008.

June 18, National Youth Sports Program camp, through July 24. Additional information: (606) 783-2180.

June 25, 27th Annual Appalachian Celebration, featuring arts, crafts, classes, music and more, various locations on campus, through June 28. Additional information: (606) 783-2204.

June 27, "Americana Crossroads Live," Duncan Recital Hall, 7:30 p.m., free. Additional information: (606) 783-2001.

June 28, Appalachian Celebration Arts and Crafts Market and Antique Show, Laughlin Health Building, 9 a.m. – 5 p.m., charge. Additional information: (606) 783-2204.

July

July 3, "Bluegrass on the Beach," Cave Run Lake beach area, 6 p.m., free. Additional information: (606) 783-9001.

July 4, Independence Day holiday, no classes or office hours.

July 7, Summer II 2003 begins; term ends Aug. 1. Additional information: (606) 783-2008.

July 26, "Americana Crossroads Live," Duncan Recital Hall, 7:30 p.m., free. Additional information: (606) 783-2001.

(MORE)

2003 Calendar
7-7-7-7-7

August

September

Sept. 1, Labor Day Holiday, no classes or office hours.

October

November

Nov. 26, Thanksgiving holiday, no classes or office hours through Nov. 30.

December

####

Due to early press deadlines, some listings may be subject to change.

8-29-02sas

Aug. 30, 2002

FOR IMMEDIATE RELEASE

MOREHEAD, Ky.---A social work educator with more than 25 years of experience has been named interim chair of the Department of Sociology, Social Work and Criminology at Morehead State University.

Ted Marshall, professor of social work, assumed his new duties July 1. He succeeds Dr. Edward Reeves who has accepted a position with the Institute for Regional Analysis and Public Policy.

A member of MSU's faculty since 1977, Marshall earned his bachelor's degree in social work from Eastern Kentucky University and his Master of Social Work (MSW) degree from the University of Kentucky. His areas of expertise include family violence inmate/father parenting, sexual abuse treatment, anger and conflict resolution, and workplace violence.

Marshall is a member of the Academy for Criminal Justice Sciences, Prevent Child Abuse Kentucky, the Parent Development Institute, the School Safety Evaluation Advisory committee, the Child Advocacy Center, and the Kentucky Social Work Educators Association.

Additionally, he has served on various community service projects and committees and is a former president of the board of directors of Christian Social Services and Prevent Child Abuse Kentucky. He has worked as a consultant for several school districts, government agencies and domestic violence organizations.

The author or co-author of numerous grants, Marshall was the recipient of the Donna J. Stone Award from Prevent Child Abuse America, the Community Peacemaker Award of the Rowan County Domestic Violence Council and the National Service Award of the Betty Crocker Foundation.

Marshall is a former employee of the Department of Human Resources, working as district program manager in Lexington and superintendent of the Frenchburg Boys' Treatment Center. In his field, he has made numerous presentations at conferences across the country.

Additional information is available by calling MSU's Department of Sociology, Social Work and Criminology at (606) 783-2656.

####

sas

News

University Communications

Pauline Young, Director

www.moreheadstate.edu

Morehead State University

UPO Box 1100

Morehead, KY 40351-1689

(606) 783-2030

Aug. 30, 2002

FOR IMMEDIATE RELEASE

MOREHEAD, Ky.---A Morehead State University senior has been awarded the prestigious Harry Barfield Scholarship from the Kentucky Broadcasters Association.

James Chase Abner of **Lost Creek** was presented a check for the \$1,000 merit-based award by Dr. Janet Kenney, MSU communications professor and outgoing chair of the Department of Communication and Theatre.

"In the last eight years, this is only the second time an MSU student has won this scholarship," Dr. Kenney said.

Abner, the son of Randall and Pamela Abner of Breathitt County, is pursuing a bachelor's degree in broadcasting. A graduate of Breathitt County High School, he worked part-time at WYMT-TV in Hazard this summer where he assisted reporters with news coverage and received on-air reporting experience.

During the 2001-02 academic year, he worked with MSU's Office of University Communications gathering, writing and videotaping campus news events and announcements. Maintaining a perfect 4.0 grade point average and a member of MSU's Academic Honors Program, he will work this fall as the news assignment editor for NewsCenter, the University's television station.

The scholarship, established in 1992, is named for Harry Barfield, former president and general manager of WLEX-TV in Lexington, who died in 1991. It is awarded annually to two juniors or seniors attending a Kentucky college or university. Winners must be Kentucky residents majoring in broadcasting or telecommunications that have completed the application requirements and received at least one recommendation by a faculty member.

Additional information is available by calling Dr. Kenney at (606) 783-2134.

#####

dlb

Photo

University Communications

Pauline Young, Director

www.moreheadstate.edu

Morehead State University

UPO Box 1100

Morehead, KY 40351-1689

(606) 783-2030

MSU SENIOR RECEIVES BARFIELD SCHOLARSHIP

Morehead State University's James Chase Abner, Lost Creek senior, has been awarded the prestigious Harry Barfield Scholarship from the Kentucky Broadcasters Association. A broadcasting major, he accepted a \$1,000 check for the merit-based award from Dr. Janet Kenney, MSU communications professor and outgoing chair of the Department of Communication and Theatre. The scholarship, established in 1992, is named for Harry Barfield, former president and general manager of WLEX-TV in Lexington, who died in 1991. Abner, the son of Randall and Pamela Abner of Breathitt County, is pursuing a bachelor's degree in broadcasting. Maintaining a perfect 4.0 grade point average and a member of MSU's Academic Honors Program, he will work this fall as the news assignment editor for NewsCenter, the University's television station.

(MSU photo by Tim Holbrook)

8-30-02

MSU is an affirmative action, equal opportunity educational institution.

