

Tips

University Communications

Pauline Young, Director

Morehead State University

UPO Box 1100

Morehead, KY 40351-1689

(606) 783-2030

HIGHLIGHTS AT MOREHEAD STATE UNIVERSITY

(Sept. 10-16)

Sunday, Sept. 10

Eagle Soccer: MSU vs. Indiana State University, Mahaney Recreational Complex, 1 p.m., free.
Additional information: (606) 783-2589.

Tuesday, Sept. 12

Red Cross Blood Drive, Button Drill Room, 10 a.m.-4 p.m. Additional information:
(606) 783-5124.

Nic Varner, billiards champion, Adron Doran University Center, 1-4 p.m., through Sept. 13.
Additional information: (606) 783-2071.

Friday, Sept. 15

Board of Regents meeting, Riggle Room, time: TBA. Additional information: (606) 783-2030.

####

9-1-00rdm

News

University Communications

Pauline Young, Director

Morehead State University

UPO Box 1100

Morehead, KY 40351-1689

(606) 783-2030

Sept. 1, 2000

FOR IMMEDIATE RELEASE

MOREHEAD, Ky.---If learning how to use computer software has been on your "to do list," Morehead State University's Office of Continuing Education may have the classes to fulfill that goal.

Starlet Roberts, MSU's technology training coordinator, will teach "Introduction to Excel 2000" on Mondays, Sept. 18-Oct. 9, and "Introduction to Word 2000" on Mondays, Nov. 6-27. Each class, which will meet from 5 to 7 p.m., has a \$50 fee.

Two different, one-session courses will be taught by Darrell Smith, senior academic consultant. "Introduction to Web Page Development" will be offered from 5 to 7 p.m. on Tuesday, Oct. 5, and repeated on Tuesday, Nov. 14. He will teach "Introduction to the World Wide Web" at the same time on Thursday, Sept. 21, and again on Tuesday, Oct. 24. There is a \$25 fee for either session.

Additional information and registration is available by calling (606) 783-2875.

####

rdm

News

University Communications

Pauline Young, Director

Morehead State University

UPO Box 1100

Morehead, KY 40351-1689

(606) 783-2030

Sept. 1, 2000

FOR IMMEDIATE RELEASE

ASHLAND, Ky.---A "Labor and Wage Laws" workshop will be offered by Morehead State University's Ashland Small Business Development Center and the Ashland Alliance on Monday, Sept. 11, in Ashland.

The program will run from 1 to 3:30 p.m. at the MSU Ashland, at 1401 Winchester Ave.

James Karn of the U.S. Department of Labor's wage and hour division will be the workshop instructor. Participants will learn about employer requirements and employee rights under the Fair Labor Standards Act (FLSA) and the Family and Medical Leave Act (FMLA). Laws involving child labor, minimum wage, overtime, salaried-verses-hourly employees and contract labor also will be discussed.

All training programs, sponsored or co-sponsored by the MSU-Ashland Small Business Development Center, are available to all individuals without regard to race, color, sex, creed or national origin. Special arrangements for the disabled will be made if requested in advance.

Pre-registration is necessary because of limited seating. The cost to attend the class is \$20, or \$10 for Ashland Alliance members.

Registration and additional information are available by calling (606) 329-8011.

####

js

News

University Communications

Pauline Young, Director

Morehead State University

UPO Box 1100

Morehead, KY 40351-1689

(606) 783-2030

Sept. 1, 2000

FOR IMMEDIATE RELEASE

MOREHEAD, Ky. ---Morehead State University will host a variety of activities for family and friends of students during its annual Family Weekend, scheduled for Friday-Sunday, Sept. 8-10, on the campus.

The weekend will begin with a picnic for MSU 101 students on Friday, Sept. 8, at 6 p.m. on the lawn of Fields Hall. Family members will have the opportunity to meet their son or daughter's instructor and classmates.

Later that evening, the Eagle soccer team will take on Western Carolina at the Mahaney Recreational Complex at 7:30 p.m. There is no admission charge. The soccer team will play again on Sunday, Sept. 10, at 1 p.m. when the Eagles take on Indiana State University.

Also on Friday, Barry Drake will present "The Roots of Rock and Roll, 1953-1963" in Button Auditorium at 8 p.m. There is no admission charge but contributions to benefit the Student Emergency Loan Fund will be accepted. The fund provides students with small, interest-free loans.

A golf scramble at SunnyBrook, MSU's public golf course, will be held Saturday, Sept. 9, beginning at 9 a.m. The contest will be a nine-hole, best-ball tournament with a shotgun start.

Play is limited to the first 72 registrants, so pre-registration is necessary for the tournament, which is sponsored by the Family Association. University students may participate when accompanied by parents or family members.

The Family Association will hold its annual meeting on Saturday, Sept. 9, at 4:40 p.m. in the Len Miller Room of the Academic-Athletic Center. All parents of MSU students are automatically members of this group. Officers in the association, outgoing co-presidents Jim and Sue Dotson of Grove City, Ohio, will install the new co-presidents, Richard and Faye Barber of Greenup.

Students and their guests may enjoy a complimentary meal during a tailgate party Saturday, Sept. 9, from 4:30 until 6:30 p.m., outside of the Academic-Athletic Center.

(MORE)

Family Weekend
2-2-2-2

The football Eagles will play Butler University at 7 p.m. in Jayne Stadium. There will be a fireworks display following the game, weather permitting. Students may purchase tickets for their family members at a special rate if purchased by noon Friday, Sept. 9.

Throughout the weekend, a number of other activities will allow family involvement on campus and in the city. The University Bookstore will extend its hours on Friday until 7:30 p.m., and open from 1 to 4 p.m. on Saturday. A Parade of Festivals is slated for downtown Morehead, beginning at 11 a.m. on Saturday.

Additional information on the weekend's activities is available by calling
(606) 783-2071.

####

rdm

News

University Communications

Pauline Young, Director

Morehead State University

UPO Box 1100

Morehead, KY 40351-1689

(606) 783-2030

Sept. 5, 2000

FOR IMMEDIATE RELEASE

MOREHEAD, Ky.--Morehead State University's Department of Military Science has a new leader. Lt. Col. John H. Karaus of Cincinnati is the new department chair. He holds the rank of professor of military science.

Lt. Col. Karaus came to MSU from Germany where he had completed assignments in Katterbach and Schweinfurt. He holds a Bachelor of Science degree in engineering from the U.S. Military Academy in West Point, N.Y., and a Master of Military Arts and Science from Command and General Staff College at Fort Leavenworth, Kan.

Commissioned a second lieutenant in air defense in 1982, Lt. Col. Karaus was assigned to Fort Knox as a platoon leader and then brigade headquarters executive officer. After graduation from flight school in 1985, he was stationed at Fort Campbell, where he was a scout section leader, support platoon leader and attack platoon leader.

After completing the advanced officer course, Lt. Col. Karaus served as commander of a cavalry troop that deployed to Saudi Arabia as part of Desert Storm. Then in 1995, he was stationed in Germany as a division plans chief before becoming the executive officer of a cavalry squadron in Bosnia. His most recent assignment in Germany was as the Brigade S3 of an aviation brigade.

Lt. Col. Karaus has received many awards and decorations including Senior Aviation Badge, Parachute Badge, Bronze Star, Air Medal (second award), Meritorious Service Medal (third award), Army Commendation Medal and Campaign Medals for Southwest Asia, Bosnia and Kosovo.

He and his wife, the former Terrisa Peacock, have two daughters: Lauren, 8, and Sara, 3.

####

rdm

News

University Communications

Pauline Young, Director

Morehead State University

UPO Box 1100

Morehead, KY 40351-1689

(606) 783-2030

Sept. 6, 2000

FOR IMMEDIATE RELEASE

ASHLAND---A workshop offering Internal Revenue Service and tax information will be presented by Morehead State University's Ashland Small Business Development Center and the Ashland Alliance on Wednesday, Sept. 13, from 9 a.m. to 3 p.m.

Designed for pre-business planners and new business owners, the workshop will be held at MSU Ashland, at 1401 Winchester Ave. Rebecca Sheeks from the IRS will teach the session.

Topics for discussion will include the advantages and disadvantages of sole proprietorships, partnerships and corporations, self-employment tax, and recordkeeping procedures.

Participants will learn about small business tax issues including required forms and schedules, due dates and filing procedures. There will be time allotted for a question and answer period

All training programs, sponsored or co-sponsored by the Ashland SBDC, are available to all individuals without regard to race, color, sex, creed or national origin. Special arrangements for the disabled will be made if requested in advance.

Pre-registration is necessary because of limited seating. There is no charge to attend the workshop.

Registration and additional information are available by calling (606) 329-8011.

####

js

News

University Communications

Pauline Young, Director

Morehead State University

UPO Box 1100

Morehead, KY 40351-1689

(606) 783-2030

Sept. 7, 2000

FOR IMMEDIATE RELEASE

MOREHEAD, Ky.---Morehead State University's Student Government Association will present Stroke 9 and ninedays in concert on Thursday, Oct. 12, at 8 p.m. in the Academic-Athletic Center.

The San Francisco-based rock band, Stroke 9 will play hits from their debut album, "Nasty Little Thoughts," that features such songs as "Little Black Backpack," "Washin' and Wonderin'" and "Letters."

Three of the four members of the group formed the band nearly a decade ago as a high school senior project. Since that time, they have released two albums themselves, booked their own national tour and signed with Cherry/Universal Records to release their debut album.

They also appeared and played in the movie "Ed TV."

"The Maddening Crowd," the debut album of ninedays features "Absolutely (Story of a Girl)," which currently is at the number seven spot on "Billboard's" chart of singles. "Sometimes" and "I Am" also are included on the compact disc, which was produced by Nick DiDia, best known for his engineering of albums by Pearl Jam and Rage Against the Machine.

Natives of New York, ninedays self-released two albums and booked themselves for shows around their hometown of Deer Park, Long Island.

Tickets, on sale now, are \$15 for the general public, or \$10 for MSU students. All seats are reserved.

Tickets may be purchased at: MSU's Office of Student Activities, Martin's Department Store, Gold Emporium and Main Street Music, in Morehead; Back's Auto Auction in Mt. Sterling; MSU's Ashland Center; Ken's New Market in Maysville; Jams Music Exchange in Winchester; Martin's Department Store in Jackson; James Family Outfitters in Grayson; MSU's Big Sandy Center in Prestonsburg; and MSU's Licking Valley Center in West Liberty.

Additional information is available by calling (606) 783-2071.

####

rdm

Photo

University Communications

Pauline Young, Director

Morehead State University

UPO Box 1100

Morehead, KY 40351-1689

(606) 783-2030

MSU STUDENTS TO ROCK WITH NINEDAYS

The group ninedays, along with Stroke 9, will take the stage at Morehead State University's Academic-Athletic Center for the Student Government Association-sponsored concert on Thursday, Oct. 12, at 8 p.m. Members of nine days are, from left, Vincent Tattanelli, drums, percussion; John Hampson, vocals, guitars; Jeremy Dean, Hammond B3, piano and keyboards; Brian Desveaux, vocals, guitars; and Nick Dimichino, bass. Tickets are on sale now at MSU's Office of Student Activities, Martin's Department Store, Gold Emporium and Main Street Music, in Morehead; Back's Auto Auction in Mt. Sterling; MSU's Ashland Center; Ken's New Market in Maysville; Jams Music Exchange in Winchester; Martin's Department Store in Jackson; James Family Outfitters in Grayson; MSU's Big Sandy Center in Prestonsburg; and MSU's Licking Valley Center in West Liberty. Additional information is available by calling (606) 783-2071.

#####

9-7-00py

MSU is an affirmative action equal opportunity educational institution.



News

University Communications

Pauline Young, Director

Morehead State University

UPO Box 1100

Morehead, KY 40351-1689

(606) 783-2030

Sept. 7, 2000

FOR IMMEDIATE RELEASE

MOREHEAD, Ky.--Piano playing for busy people will be the subject of three different courses offered this fall by Morehead State University's Office of Continuing Education.

"In one morning or afternoon you can learn the secrets to play just about any song," said Stephanie Evans, continuing education coordinator.

The courses will be taught by Bernie Schweickart, a professional pianist from Louisville, whose music career spans 35 years.

"Instant Piano for Hopelessly Busy People" is scheduled for Saturday, Sept. 23, from 9:30 a.m. to 12:30 p.m. and "How to Play Piano by Ear" is slated for the same day from 1:30 to 4:30 p.m. Participants in the afternoon class must have a grasp of basic piano chords, Evans said.

Holiday music will be the focus of the third course taught Thursday, Nov. 9, from 6 to 9 p.m.

The cost of each course is \$30 plus a \$20 materials fee that includes a study book and a 60-minute cassette tape.

Additional information and reservations are available by calling Evans at (606) 783-2875.

#####

rdm

News

University Communications

Pauline Young, Director

Morehead State University

UPO Box 1100

Morehead, KY 40351-1689

(606) 783-2030

Sept. 7, 2000

FOR IMMEDIATE RELEASE

MOREHEAD, Ky.---Michael W. Hail, research and development director for Morehead State University's Institute for Regional Analysis and Public Policy, has written an article highlighting that program for an upcoming book on Appalachia.

The "Encyclopedia of Appalachia," to be released in the summer of 2001, will feature information on the land, people, economics, traditions and institutions of the region. "The essay on IRAPP discusses the mission, curriculum and projects of the institute," Hail said.

"The article was written to provide information about the institute," he added. "As we are very young, we were honored to be included along organizations that are longstanding in the region."

IRAPP was established in 1998 as MSU's Program of Distinction. Among its goals are to provide research, public service and academic study for the University's service region and all of Appalachia.

The encyclopedia is being compiled by the Center for Appalachian Studies and Services at East Tennessee State University.

####

rdm

News

University Communications

Pauline Young, Director

Morehead State University

UPO Box 1100

Morehead, KY 40351-1689

(606) 783-2030

Sept. 8, 2000

FOR IMMEDIATE RELEASE

MOREHEAD, Ky.---Jeremy W. McCane of **Vanceburg** has been awarded a three-year Army Reserve Officers' Training Corps (ROTC) scholarship at Morehead State University.

The scholarship will pay all tuition and fees, according to Lt. Col. John H. Karaus, professor of military science. In addition, recipients receive an allotment for books and supplies plus a \$200 monthly subsistence allowance during the next three years.

The MSU sophomore will be commissioned as a second lieutenant in the United States Army upon graduation and completion of the ROTC program.

He is the son of Lannie and Sharon McCane.

####

js

News

University Communications

Pauline Young, Director

Morehead State University

UPO Box 1100

Morehead, KY 40351-1689

(606) 783-2030

Sept. 8, 2000

FOR IMMEDIATE RELEASE

MOREHEAD, Ky.---Melinda Melendez of **Three Rivers, Mich.**, has been awarded a two-year Army Reserve Officers' Training Corps (ROTC) scholarship at Morehead State University.

The scholarship will pay all tuition and fees, according to Lt. Col. John H. Karaus, professor of military science. In addition, recipients receive an allotment for books and supplies plus a \$200 monthly subsistence allowance during the next two years.

The MSU sophomore will be commissioned as a second lieutenant in the United States Army upon graduation and completion of the ROTC program.

She is the daughter of Brenda K. Myers.

####

js

News

University Communications

Pauline Young, Director

Morehead State University

UPO Box 1100

Morehead, KY 40351-1689

(606) 783-2030

Sept. 8, 2000

FOR IMMEDIATE RELEASE

MOREHEAD, Ky.---James L. Polk of **Clay City** has been awarded a three-year Army Reserve Officers' Training Corps (ROTC) scholarship at Morehead State University.

The scholarship will pay all tuition and fees, according to Lt. Col. John H. Karaus, professor of military science. In addition, recipients receive an allotment for books and supplies plus a \$200 monthly subsistence allowance during the next three years.

The MSU sophomore will be commissioned as a second lieutenant in the United States Army upon graduation and completion of the ROTC program.

He is the son of Walter and Rita Polk.

####

js

News

University Communications

Pauline Young, Director

Morehead State University

UPO Box 1100

Morehead, KY 40351-1689

(606) 783-2030

Sept. 8, 2000

FOR IMMEDIATE RELEASE

MOREHEAD, Ky.---Morehead State University has announced two students from **Ashland** are new members of MSU's Academic Honors Program.

Anetta Lynn Pierce, the daughter of Frank and Teresa Pierce. A graduate of Fairview High School, she is listed in "Who's Who Among American High School Students" and was a member of National Honor Society.

Pierce was the recipient of MSU's Regional Honors and Academic Honors scholarships.

Sherry Swymn, the daughter of Sheila Clinger. A graduate of Boyd County High School, she was a member of Beta Club and FBLA, and was guard captain during her junior year.

Swymn is the recipient of MSU's Regents Scholarship and Alumni Award and the Kentucky Educational Excellence Scholarship.

Students are accepted into the Academic Honors Program for outstanding academic performance with an ACT composite score of 26 or higher and a strong academic record.

College students are eligible to join the program if they meet the criteria.

Additional information is available by calling the Academic Honors Program at (606) 783-2807.

####

ahn

News

University Communications

Pauline Young, Director

Morehead State University

UPO Box 1100

Morehead, KY 40351-1689

(606) 783-2030

Sept. 8, 2000

FOR IMMEDIATE RELEASE

MOREHEAD, Ky.---Morehead State University has announced that Mary Sarah Cochran of **Danville** is a new member of MSU's Academic Honors Program.

A graduate of Danville High School, she is the daughter of David and Joan Cochran. A distinguished math and social studies scholar, she was a member of National Honor Society and graduated with a 4.0 grade point average. She was president of SADD and co-president of the Diversity Club.

Cochran was the recipient of MSU's Presidential Scholarship and the Kentucky Educational Excellence Scholarship.

Students are accepted into the Academic Honors Program for outstanding academic performance with an ACT composite score of 26 or higher and a strong academic record. College students are eligible to join the program if they meet the criteria.

Additional information is available by calling the Academic Honors Program at (606) 783-2807.

####

ahn

News

University Communications

Pauline Young, Director

Morehead State University

UPO Box 1100

Morehead, KY 40351-1689

(606) 783-2030

Sept. 8, 2000

FOR IMMEDIATE RELEASE

MOREHEAD, Ky.--- Morehead State University has announced that Melissa Marie Yeoman of **Jackson** is a new member of MSU's Academic Honors Program.

A graduate of Jackson Independent High School, she is the daughter of Jon and Cindy Yeoman. Listed in "Who's Who Among American High School Students," she is a member of the National Honor Society and an American Achievement Academy Award winner.

Yeoman was a recipient of MSU's Regents Scholarship.

Students are accepted into the Academic Honors Program for outstanding academic performance with an ACT composite score of 26 or higher and a strong academic record.

College students are eligible to join the program if they meet the criteria.

Additional information is available by calling the Academic Honors Program at (606) 783-2807.

####

ahn

News

University Communications

Pauline Young, Director

Morehead State University

UPO Box 1100

Morehead, KY 40351-1689

(606) 783-2030

Sept. 8, 2000

FOR IMMEDIATE RELEASE

MOREHEAD, Ky.--- Morehead State University has announced that James Donovan of **Ewing** is a new member of MSU's Academic Honors Program.

A graduate of Fleming County High School, he is the son of David and Karen Donovan. An Achievement Academy Award winner, he was a member of Beta Club, Spanish Club and pep band.

Donovan is a recipient of MSU's Regents Scholarship.

Students are accepted into the Academic Honors Program for outstanding academic performance with an ACT composite score of 26 or higher and a strong academic record. College students are eligible to join the program if they meet the criteria.

Additional information is available by calling the Academic Honors Program at (606) 783-2807.

####

ahn

News

University Communications

Pauline Young, Director

Morehead State University

UPO Box 1100

Morehead, KY 40351-1689

(606) 783-2030

Sept. 8, 2000

FOR IMMEDIATE RELEASE

MOREHEAD, Ky.--- Morehead State University has announced that Alicia Shell of **Betsy Layne** is a new member of MSU's Academic Honors Program.

A graduate of Betsy Layne High School, she is the daughter of Jack and Joycie Shell. Listed in "Who's Who Among American High School Students," she is a member of National Honor Society and Beta Club.

Shell is the recipient of MSU's Academic Honors and Regional Honors scholarships and the Kentucky Educational Excellence Scholarship.

Students are accepted into the Academic Honors Program for outstanding academic performance with an ACT composite score of 26 or higher and a strong academic record. College students are eligible to join the program if they meet the criteria.

Additional information is available by calling the Academic Honors Program at (606) 783-2807.

####

ahn

News

University Communications

Pauline Young, Director

Morehead State University

UPO Box 1100

Morehead, KY 40351-1689

(606) 783-2030

Sept. 8, 2000

FOR IMMEDIATE RELEASE

MOREHEAD, Ky.--- Morehead State University has announced that Ginny Webb of **Crittenden** is a new member of MSU's Academic Honors Program.

A graduate of Grant County High School, she is the daughter of Dean and Elizabeth Webb. Listed in "Who's Who Among American High School Students," she was Student Council president and a participant in the National Student Leadership Conference and Kentucky Youth Assembly. She received the Youth Performance Award and the Orie P. Gruell Scholarship.

Webb also was a recipient of MSU's Regents Scholarship.

Students are accepted into the Academic Honors Program for outstanding academic performance with an ACT composite score of 26 or higher and a strong academic record. College students are eligible to join the program if they meet the criteria.

Additional information is available by calling the Academic Honors Program at (606) 783-2807.

####

ahn

News

University Communications

Pauline Young, Director

Morehead State University

UPO Box 1100

Morehead, KY 40351-1689

(606) 783-2030

Sept. 8, 2000

FOR IMMEDIATE RELEASE

MOREHEAD, Ky.--- Morehead State University has announced that two students from Greenup County are new members of MSU's Academic Honors Program.

They are:

Jessica Cremeans of **Flatwoods**. A graduate of Russell High School, she is the daughter of Larry and Liz Cremeans. A Kentucky Governor's Scholar, she was a member of Beta Club, 4-H Club president, and a Best of the Class award winner.

Cremeans is the recipient of MSU's Presidential and Academic Honors scholarships, the MSU Foundation Award and the Beta Club Scholarship.

Kinda Lowder of **South Shore**. A graduate of Greenup County High School, she is the daughter of Jackie and Winford Lowder. Listed in "Who's Who Among American College Students" and on the Dean's List, she is an MSU Peer Adviser and an All-American Scholar Collegiate Award winner.

Lowder is the recipient of MSU's Regional Honors Scholarship and Alumni Award.

Students are accepted into the Academic Honors Program for outstanding academic performance with an ACT composite score of 26 or higher and a strong academic record.

College students are eligible to join the program if they meet the criteria.

Additional information is available by calling the Academic Honors Program at (606) 783-2807.

####

ahn

News

University Communications

Pauline Young, Director

Morehead State University

UPO Box 1100

Morehead, KY 40351-1689

(606) 783-2030

Sept. 8, 2000

FOR IMMEDIATE RELEASE

MOREHEAD, Ky.--- Morehead State University has announced that two students from **Louisville** are new members of MSU's Academic Honors Program.

The Louisville Male High School graduates are:

Doug Kelly, the son of Robert and Pamela Kelly. An award winner at the regional science fair and the Kentucky Junior Academy of Science competition, he also served as president of Mu Alpha Theta and captain of the science club.

Kelly is the recipient of MSU's Presidential Scholarship.

John Scott Stauble, Jr., the son of John and Cindy Stauble.

A Kentucky Governor's Scholar, he was awarded the Bausch and Lomb Award for scientific excellence and was named volunteer of the year at the Louisville Science Center.

Stauble is the recipient of MSU's Presidential and Academic Honors scholarships.

Students are accepted into the Academic Honors Program for outstanding academic performance with an ACT composite score of 26 or higher and a strong academic record. College students are eligible to join the program if they meet the criteria.

Additional information is available by calling the Academic Honors Program at (606) 783-2807.

####

ahn

News

University Communications

Pauline Young, Director

Morehead State University

UPO Box 1100

Morehead, KY 40351-1689

(606) 783-2030

Sept. 8, 2000

FOR IMMEDIATE RELEASE

MOREHEAD, Ky.--- Morehead State University has announced that two students from **Ft. Mitchell** are new members of MSU's Academic Honors Program.

The Beechwood High School graduates are:

Alisha Address, the daughter of Sally and Darrell Address. A member of National Honor Society, she was a participant in the theatre program and Odyssey of the Mind.

Address is the recipient of MSU's Regents and Academic Honors scholarships.

Morgan Battrell, the son of Joseph and Sherida Dougherty. Listed in "Who's Who Among American High School Students," he was a member of National Honor Society and marching band.

Battrell is the recipient of MSU's Regents Scholarship and the Burger King Founder's Award.

Students are accepted into the Academic Honors Program for outstanding academic performance with an ACT composite score of 26 or higher and a strong academic record. College students are eligible to join the program if they meet the criteria.

Additional information is available by calling the Academic Honors Program at (606) 783-2807.

####

ahn

News

University Communications

Pauline Young, Director

Morehead State University

UPO Box 1100

Morehead, KY 40351-1689

(606) 783-2030

Sept. 8, 2000

FOR IMMEDIATE RELEASE

MOREHEAD, Ky.--- Morehead State University has announced that Ryan Mynatt of **London** is a new member of MSU's Academic Honors Program.

A graduate of North Laurel High School, he is the son of Michael and Lisa Mynatt. A member of National Honor Society and Beta Club, he was co-captain of the soccer team and a member of the all-district soccer team.

Mynatt is the recipient of MSU's Academic Honors Scholarship and the London Rotary Club Scholarship.

Students are accepted into the Academic Honors Program for outstanding academic performance with an ACT composite score of 26 or higher and a strong academic record. College students are eligible to join the program if they meet the criteria.

Additional information is available by calling the Academic Honors Program at (606) 783-2807.

####

ahn

News

University Communications

Pauline Young, Director

Morehead State University

UPO Box 1100

Morehead, KY 40351-1689

(606) 783-2030

Sept. 8, 2000

FOR IMMEDIATE RELEASE

MOREHEAD, Ky.--- Morehead State University has announced that Brandon P. Thompson of **Louisa** is a new member of MSU's Academic Honors Program.

A summa cum laude graduate of Lawrence County High School, he is the son of George and Sue Thompson. He was a member of National Honor Society and the academic team.

Thompson is the recipient of MSU's Regional Honors, Academic Honors and Music scholarships and the CSX scholarship.

Students are accepted into the Academic Honors Program for outstanding academic performance with an ACT composite score of 26 or higher and a strong academic record. College students are eligible to join the program if they meet the criteria.

Additional information is available by calling the Academic Honors Program at (606) 783-2807.

####

ahn

News

University Communications

Pauline Young, Director

Morehead State University

UPO Box 1100

Morehead, KY 40351-1689

(606) 783-2030

Sept. 8, 2000

FOR IMMEDIATE RELEASE

MOREHEAD, Ky.--- Morehead State University has announced that Erica Danielle Cooper of **Garrison** is a new member of MSU's Academic Honors Program.

A graduate of Lewis County High School, she is the daughter of Jim and Debbie Cooper. Listed in "Who's Who Among American High School Students," she is a member of National Honor Roll Society, Beta Club and Future Problem Solving Team. She was co-editor of her high school yearbook.

Cooper is the recipient of MSU's Regents Scholarship and Alumni Award, the Kentucky Educational Excellence Scholarship, the Grayson RECC Scholarship, and the Kentucky State Police Professional Association Scholarship.

Students are accepted into the Academic Honors Program for outstanding academic performance with an ACT composite score of 26 or higher and a strong academic record. College students are eligible to join the program if they meet the criteria.

Additional information is available by calling the Academic Honors Program at (606) 783-2807.

####

ahn

News

University Communications

Pauline Young, Director

Morehead State University

UPO Box 1100

Morehead, KY 40351-1689

(606) 783-2030

Sept. 8, 2000

FOR IMMEDIATE RELEASE

MOREHEAD, Ky.--- Morehead State University has announced that two students from **Salyersville** are new members of MSU's Academic Honors Program.

They are:

Stephanie Ann Mays, the daughter of Charlene and Jeffery Mays. A graduate of Magoffin County High School, she is listed in "Who's Who Among American High School Students, and is a National Merit Award winner and honors graduate.

Mays is the recipient of MSU's Regents Scholarship and Alumni Award.

Ryan E. Mullins, the son of James and Orrenda Mullins. A graduate of Piarist School in Martin, he was listed in "Who's Who Among American High School Students" and was a member of the school newspaper staff and the French Club.

Mullins is the recipient of MSU's Academic Honors and Regional Honors scholarships.

Students are accepted into the Academic Honors Program for outstanding academic performance with an ACT composite score of 26 or higher and a strong academic record. College students are eligible to join the program if they meet the criteria.

Additional information is available by calling the Academic Honors Program at (606) 783-2807.

####

ahn

News

University Communications

Pauline Young, Director

Morehead State University

UPO Box 1100

Morehead, KY 40351-1689

(606) 783-2030

Sept. 8, 2000

FOR IMMEDIATE RELEASE

MOREHEAD, Ky.--- Morehead State University has announced that Julia Slone of **Mt. Sterling** is a new member of MSU's Academic Honors Program.

A graduate of Montgomery County High School, she is the daughter of Maureen Allison-Slone and Billy Slone. A Kentucky Governor's Scholar, she was a member of National Honor Society.

Slone is the recipient of MSU's Presidential Scholarship, the Robert C. Byrd Scholarship, the Dr. Elwick Scholarship, and the Sam Walton Community Scholarship.

Students are accepted into the Academic Honors Program for outstanding academic performance with an ACT composite score of 26 or higher and a strong academic record. College students are eligible to join the program if they meet the criteria.

Additional information is available by calling the Academic Honors Program at (606) 783-2807.

####

ahn

News

University Communications

Pauline Young, Director

Morehead State University

UPO Box 1100

Morehead, KY 40351-1689

(606) 783-2030

Sept. 8, 2000

FOR IMMEDIATE RELEASE

MOREHEAD, Ky.--- Morehead State University has announced that Lauren Michael Bihl of **West Union, Ohio**, is a new member of MSU's Academic Honors Program.

A graduate of West Union High School, she is the daughter of Karen and Michael Bihl. Salutatorian of her class, she was a member of National Honor Society and Beta Club.

Bihl is the recipient of MSU's Alumni Award.

Students are accepted into the Academic Honors Program for outstanding academic performance with an ACT composite score of 26 or higher and a strong academic record.

College students are eligible to join the program if they meet the criteria.

Additional information is available by calling the Academic Honors Program at (606) 783-2807.

####

ahn

News

University Communications

Pauline Young, Director

Morehead State University

UPO Box 1100

Morehead, KY 40351-1689

(606) 783-2030

Sept. 8, 2000

FOR IMMEDIATE RELEASE

MOREHEAD, Ky.--- Morehead State University has announced that two students from **Pike County** are new members of MSU's Academic Honors Program.

They are:

Heather Paulette Whitt of **Ransom**. A summa cum laude graduate of Belfry High School, she is the daughter of Harvey and Linda Whitt. Listed in "Who's Who Among American High School Students," she is a member of National Honor Roll Society.

Whitt is the recipient of MSU's Regional Honors and Academic Honors scholarships.

Steven Bartley of **Pikeville**. A graduate of Millard High School, he is the son of William and Ethel Bartley. He was president of FBLA and was a participant in the Presidential Classroom's Scholar Program.

Bartley is a recipient of MSU's Regional Honors Scholarship.

Students are accepted into the Academic Honors Program for outstanding academic performance with an ACT composite score of 26 or higher and a strong academic record. College students are eligible to join the program if they meet the criteria.

Additional information is available by calling the Academic Honors Program at (606) 783-2807.

####

ahn

News

University Communications

Pauline Young, Director

Morehead State University

UPO Box 1100

Morehead, KY 40351-1689

(606) 783-2030

Sept. 8, 2000

FOR IMMEDIATE RELEASE

MOREHEAD, Ky.--- Morehead State University has announced that Tashena Nobrega of **Morehead** is a new member of MSU's Academic Honors Program.

A graduate of Rowan County Senior High School, she is the daughter of Joe and Sheila Nobrega. A 1999 Rowan County Junior Miss first runner-up, she placed fifth in the National Forensics Tournament for dramatic presentation. She is a martial arts instructor and a graduate of Images Model and Talent Agency.

Nobrega is the recipient of MSU's Presidential Scholarship and Alumni Award.

Students are accepted into the Academic Honors Program for outstanding academic performance with an ACT composite score of 26 or higher and a strong academic record. College students are eligible to join the program if they meet the criteria.

Additional information is available by calling the Academic Honors Program at (606) 783-2807.

####

ahn

News

University Communications

Pauline Young, Director

Morehead State University

UPO Box 1100

Morehead, KY 40351-1689

(606) 783-2030

Sept. 8, 2000

FOR IMMEDIATE RELEASE

MOREHEAD, Ky.--- Morehead State University has announced that Emmalene Lowers of **Washington, W. Va.**, is a new member of MSU's Academic Honors Program.

A graduate of Parkersburg South High School, she is the daughter of Christopher and Kathy Lowers. President of FBLA, she was listed on the honor roll and was a member of Youth Volunteer Corps and the varsity crew.

Lowers is the recipient of MSU's Presidential Scholarship.

Students are accepted into the Academic Honors Program for outstanding academic performance with an ACT composite score of 26 or higher and a strong academic record. College students are eligible to join the program if they meet the criteria.

Additional information is available by calling the Academic Honors Program at (606) 783-2807.

####

ahn

News

University Communications

Pauline Young, Director

Morehead State University

UPO Box 1100

Morehead, KY 40351-1689

(606) 783-2030

Sept. 8, 2000

FOR IMMEDIATE RELEASE

MOREHEAD, Ky.--- Morehead State University has announced that Hope Denise Spencer of **Pine Ridge** is a new member of MSU's Academic Honors Program.

A graduate of Wolfe County High School, she is the daughter of Everett and Sharon Spencer. Valedictorian of her class, she was vice-president of Beta Club and captain of the WCHS varsity cheerleading team. She was a member of the academic team and SADD.

Spencer is the recipient of MSU' Presidential Scholarship.

Students are accepted into the Academic Honors Program for outstanding academic performance with an ACT composite score of 26 or higher and a strong academic record. College students are eligible to join the program if they meet the criteria.

Additional information is available by calling the Academic Honors Program at (606) 783-2807.

####

ahn

News

University Communications

Pauline Young, Director

Morehead State University

UPO Box 1100

Morehead, KY 40351-1689

(606) 783-2030

Sept. 8, 2000

FOR IMMEDIATE RELEASE

MOREHEAD, Ky.--- Morehead State University has announced that Lorie Conley of **Isonville** is a new member of MSU's Academic Honors Program.

A graduate of East Carter High School, she is a member of the Student Association of Feminist Thought, and has been a contributing author for Emerging Voices, the Women's Studies newsletter, and Matters of Honor, the AHSA newsletter.

Daughter of Chris McGhee of Grayson, she is the wife of James Conley Jr. and mother of two children: Mandie and Jamie.

Students are accepted into the Academic Honors Program for outstanding academic performance with an ACT composite score of 26 or higher and a strong academic record. College students are eligible to join the program if they meet the criteria.

Additional information is available by calling the Academic Honors Program at (606) 783-2807.

#####

ahn

News

University Communications

Pauline Young, Director

Morehead State University

UPO Box 1100

Morehead, KY 40351-1689

(606) 783-2030

Sept. 8, 2000

FOR IMMEDIATE RELEASE

MOREHEAD, Ky.--- Morehead State University has announced that Amber Ferrell of **Sudith** is a new member of MSU's Academic Honors Program.

A graduate of Menifee County High School, she is the daughter of Tommy and Rosetta Ferrell. A member of the PEPP pre-med program, she also served as Beta Club secretary.

Ferrell is the recipient of MSU's Regents Scholarship.

Students are accepted into the Academic Honors Program for outstanding academic performance with an ACT composite score of 26 or higher and a strong academic record.

College students are eligible to join the program if they meet the criteria.

Additional information is available by calling the Academic Honors Program at (606) 783-2807.

####

js

Sept. 8, 2000

FOR IMMEDIATE RELEASE

MOREHEAD, Ky.--- Morehead State University has announced that Jillian Salisbury of **Lucasville, Ohio**, is a new member of MSU's Academic Honors Program.

A graduate of Minford High School, she is the daughter of Harold and Roxanna Salisbury. A senior mentor, she was chosen WSAZ best of the class. She also has been a member of the 4-H Club and Girl Scouts.

Salisbury is the recipient of MSU's Presidential and Academic Honors Scholarship.

Students are accepted into the Academic Honors Program for outstanding academic performance with an ACT composite score of 26 or higher and a strong academic record.

College students are eligible to join the program if they meet the criteria.

Additional information is available by calling the Academic Honors Program at (606) 783-2807.

####

js

News

University Communications

Pauline Young, Director

Morehead State University

UPO Box 1100

Morehead, KY 40351-1689

(606) 783-2030

Sept. 8, 2000

FOR IMMEDIATE RELEASE

MOREHEAD, Ky.--- Morehead State University has announced that Laurel Taylor of **Troy, Ohio**, is a new member of MSU's Academic Honors Program.

A graduate of Dayton Christian High School, she is the daughter of Larry and Mary Lee Taylor. She is the recipient of MSU's Presidential Scholarship.

Students are accepted into the Academic Honors Program for outstanding academic performance with an ACT composite score of 26 or higher and a strong academic record. College students are eligible to join the program if they meet the criteria.

Additional information is available by calling the Academic Honors Program at (606) 783-2807.

####

js

Media Advisory

University Communications

Pauline Young, Director

Morehead State University

UPO Box 1100

Morehead, KY 40351-1689

(606) 783-2030

EVENT: MSU Board of Regents Meeting
DATE: Friday, Sept. 15, 2000
TIME: 9:30 a.m.
SITE: Riggle Room, Adron Doran University Center

The board's agenda will include a number of items for action and/or discussion, including approval of Personnel Policy PG-57, Retired Faculty and Staff Re-Employment Program; renaming of Extended Campus Centers and membership in the Pioneer Football League. They also will ratify Student Government Association Constitutional Amendments.

The regents will be asked to approve the revision of several personnel policies: PG-44, Staff Job Classification, Wage and Salary Administration; PG-50, Staff Performance Management System; PSE-7, Discipline and Dismissal (exempt employees) and PSNE-8, Discipline and Dismissal (non-exempt employees); and Pad-7, Suspension With or Without Pay.

Reports are slated on Preliminary 2000 Fall Enrollment, Personal Service Contracts, 1999-2000 Salaries, Real Property Leases, Real Property Acquisition, Private Giving, Major Gifts; as well as an executive briefing on a special NASA project.

The spotlight presentation will be status reports on the Enrollment Task Force and the Teacher Education Reform.

Media representatives planning to attend this meeting are requested to contact the Office of University Communications at (606) 783-2030, by noon Thursday, Sept. 14, so that sufficient support materials will be available.

####

9-10-00py

Tips

University Communications

Pauline Young, Director

Morehead State University

UPO Box 1100

Morehead, KY 40351-1689

(606) 783-2030

HIGHLIGHTS AT MOREHEAD STATE UNIVERSITY

(Sept. 17-23)

Wednesday, Sept. 20

Comedians Vic Henley and Buzz Sutherland, Button Auditorium, 8 p.m., free. Additional information: (606) 783-2071.

High-Risk Drinking Prevention Conference, through Sept. 22, Adron Doran University Center, all day. Additional information: (606) 783-2125.

Friday, Sept. 22

Eagle Soccer: MSU vs. Indiana University-Purdue University Indianapolis, Mahaney Recreational Complex, 2 p.m., free. Additional information: (606) 783-2589.

####

9-11-00rdm

Tips

University Communications

Pauline Young, Director

Morehead State University

UPO Box 1100

Morehead, KY 40351-1689

(606) 783-2030

OCTOBER HIGHLIGHTS AT MOREHEAD STATE UNIVERISTY

- Oct. 2-Nov. 2, Art Exhibit: Marshutz, Blanch, Abrahamson and Lowenstein, Claypool-Young Art Building, 8 a.m.-4 p.m., weekdays, free. Opening reception, Oct. 4, 7-9 p.m. Additional information: (606) 783-2766.
- Oct. 3, Art Exhibit: Southland Highland Craft Guild 70th Anniversary Exhibition, Kentucky Folk Art Center, 9 a.m.-5 p.m., Monday-Saturday, 1-5 p.m., Sundays, charge. Additional information: (606) 783-2204.
- Oct. 3, Fall Job Fair and Graduate School Day, Crager Room, Adron Doran University Center, 10 a.m.-1 p.m. Additional information: (606) 783-2233.
- Oct. 3, Faculty Recital: Dr. Robert Pritchard, flute, Duncan Recital Hall, Baird Music Hall, 8 p.m., free. Additional information: (606) 783-2473.
- Oct. 5, Faculty Recital: Michael Acord, clarinet, Duncan Recital Hall, Baird Music Hall, 8 p.m., free. Additional information: (606) 783-2473.
- Oct. 6, Kentucky Association of Housing Officers conference, campus, 8 a.m. Additional information: (606) 783-2060.
- Oct. 6, Eagle Soccer: MSU vs. Southeast Missouri State University, Mahaney Recreational Complex, 4 p.m., free. Additional information: (606) 783-2589.
- Oct. 7, Preview Day, Crager Room, Adron Doran University Center, 9 a.m. Additional information: (606) 783-2000 or (800) 585-6781.
- Oct. 7-8, Tennis: Women's Eagle Fall Classic, Sadler Tennis Courts, all day, free. Additional information: (606) 783-5408.
- Oct. 8, Eagle Soccer: MSU vs. Murray State University, Mahaney Recreational Complex, 1 p.m., free. Additional information: (606) 783-2589.
- Oct. 11, Eagle Soccer: MSU vs. Marshall University, Mahaney Recreational Complex, 7 p.m., free. Additional information: (606) 783-2589.
- Oct. 11, Eagle Volleyball: MSU vs. West Virginia University, Wetherby Gymnasium, 7 p.m., free. Additional information: (606) 783-2122.
- Oct.11, Performance: "We Speak Freedom: Bridges to the Future," Stacy Little and Kimberly Ross-Brown, actors, grill, Adron Doran University Center, 7 p.m. Additional information: (606) 783-2129.
- Oct. 11, Junior Recital: Kousuke Otaki, guitar, Duncan Recital Hall, Baird Music Hall, 8 p.m., free. Additional information: (606) 783-2473.
- Oct. 12, Concert: Stoke 9 with ninedays, Academic-Athletic Center, 8 p.m.; charge Additional information (606) 783-2071.

October Highlights

2-2-2-2

- Oct. 12, Guest Recital: Dr. Ken Kroesche, euphonium, Octubafest, Duncan Recital Hall, Baird Music Hall, 8 p.m., free. Additional information: (606) 783-2473.
- Oct. 12-14, Theatre: "The Government Inspector," Kibbey Theatre, 8 p.m., charge. Additional information: (606) 783-2170.
- Oct. 13, Eagle Volleyball: MSU vs. Tennessee Technological University, Wetherby Gymnasium, 7 p.m., free. Additional information: (606) 783-2122.
- Oct. 14, Eagle Soccer: MSU vs. Tennessee Technological University, Mahaney Recreational Complex, 11 a.m., free. Additional information: (606) 783-2589.
- Oct. 14, Eagle Volleyball: MSU vs. Lipscomb University, Wetherby Gymnasium, 11 a.m., free. Additional information: (606) 783-2122.
- Oct. 19, Studio Recital: Octubafest, tuba/euphonium, Duncan Recital Hall, Baird Music Hall, 8 p.m., free. Dr. Stacy Baker, director. Additional information: (606) 783-2473.
- Oct. 19-22, Homecoming, campus. Additional information: (606) 783-2080.
- Oct. 20, Eagle Volleyball: MSU vs. Tennessee State University, Wetherby Gymnasium, 7 p.m., free. Additional information: (606) 783-2122.
- Oct. 20, Concert: D-Dawg, Button Auditorium, 8 p.m. Additional information: (606) 783-2129.
- Oct. 21, Eagle Football: MSU vs. Bowie State University, Jayne Stadium, 1:30 p.m., charge. Additional information: (606) 783-2020.
- Oct. 21, Eagle Volleyball: MSU vs. Austin Peay State University, Wetherby Gymnasium, 7 p.m., free. Additional information: (606) 783-2122.
- Oct. 24-25, Graduation Fair, Crager Room, Adron Doran University Center, 9 a.m., free. Additional information: (606) 783-2080.
- Oct. 24, Eagle Soccer: MSU vs. Spalding University, Mahaney Recreational Complex, 7 p.m., free. Additional information: (606) 783-2589.
- Oct. 24-26, Delta Zeta/Theta Chi Haunted House, Button Drill Room, time: TBA, charge. Additional information: (606) 783-2886.
- Oct. 26, Recital: Rocktubafest, Tuba/Euphonium Ensemble, Duncan Recital Hall, Baird Music Hall, Dr. Stacy Baker, director, 8 p.m., free. Additional information: (606) 783-2473.
- Oct. 30-31, Central Kentucky Blood Center blood drive, Button Drill Room, 9 a.m. Competition between freshmen and other donors. Additional information: (800) 775-2522.
- Oct. 31, WellFest, Crager Room, Adron Doran University Center, 8 a.m. Additional information: (606) 783-5316.

Due to early press deadlines, some listings may be subject to change.

####

9-11-00rdm

MSU is an affirmative action equal opportunity educational institution.

Tips

University Communications

Pauline Young, Director

Morehead State University

UPO Box 1100

Morehead, KY 40351-1689

(606) 783-2030

NOVEMBER HIGHLIGHTS AT MOREHEAD STATE UNIVERISTY

- Nov. 1, Concert: MSU Orchestra, Duncan Recital Hall, Baird Music Hall, 8 p.m., free.
Terry Durbin, conductor. Additional information: (606) 783-2473.
- Nov. 2, Guest Recital: Brass Band of the Tri-State, Duncan Recital Hall, Baird Music Hall,
8 p.m., free. Additional information: (606) 783-2473.
- Nov. 3, Eagle Volleyball: MSU vs. Eastern Illinois University, Wetherby Gymnasium, 7 p.m.,
free. Additional information: (606) 783-2122.
- Nov. 4, Preview Day, Crager Room, Adron Doran University Center, 9 a.m. Additional
information: (606) 783-2000 or (800) 585-6781.
- Nov. 4, MSU Rifle Team vs. Murray State University, Button Drill Room, time: TBA.
Additional information: (606) 783-2289.
- Nov. 4, Eagle Volleyball: MSU vs. Southeast Missouri State University, Wetherby Gymnasium,
11 a.m., free. Additional information: (606) 783-2122.
- Nov. 4, Eagle Football: MSU vs. Kentucky Wesleyan College, Jayne Stadium, 1:30 p.m., charge.
Additional information: (606) 783-2020.
- Nov. 5, MSU Rifle Team vs. University of Tennessee at Martin, Button Drill Room, time: TBA.
Additional information: (606) 783-2289.
- Nov. 5, Lady Eagle (Exhibition) Basketball: MSU vs. Queen City Hoopstars, Academic-Athletic
Center, 2 p.m., charge. Additional information: (606) 783-2126.
- Nov.5, Faculty Recital: Jay Flippin, keyboards, Duncan Recital Hall, Baird Music Hall, 8 p.m.,
free. Additional information: (606) 783-2473.
- Nov. 8, Eagle Volleyball: MSU vs. Eastern Kentucky University, Wetherby Gymnasium, 7 p.m.,
free. Additional information: (606) 783-2122.
- Nov. 8, Speaker: "An Afrocentric Perspective Towards Black Male/Female Relationships,"
Dr. Pamela Hill-Traynham, Commonwealth Room, Adron Doran University Center,
7 p.m. Additional information: (606) 783-2129.
- Nov. 9, Roundtable: "Black Issues in Higher Education," Dr. Pamela Hill-Traynham,
East Room A, Adron Doran University Center, noon, bring a lunch. Additional
information: (606) 783-2129.
- Nov. 10, MSU Board of Regents meeting, campus, time: TBA. Additional information:
(606) 783-2030.

(MORE)

November highlights

2-2-2-2

Nov. 12, Lady Eagle (Exhibition) Basketball: MSU vs. Sports Reach, Academic-Athletic Center, 2 p.m., charge. Additional information: (606) 783-2126.

Nov. 13-14, MSU Choral Festival, Baird Music Hall, charge. Additional information: (606) 783-2480.

Nov. 13, Eagle (Exhibition) Basketball: MSU vs. Sports Reach, Academic-Athletic Center, 7:30 p.m., charge. Additional information: (606) 783-2087.

Nov. 13, Concert: MSU Choirs, Duncan Recital Hall, Baird Music Hall, 8 p.m., free. Dr. Greg Detweiler, conductor. Additional information: (606) 783-2473.

Nov. 14, Concert: Festival Choir, Duncan Recital Hall, Baird Music Hall, 7 p.m., free. John Dickson, guest conductor. Additional information: (606) 783-2473.

Nov. 14, Eagle Volleyball: MSU vs. Ohio University, Wetherby Gymnasium, 7 p.m., free. Additional information: (606) 783-2122.

Nov. 14, Chi Omega Follies, Button Auditorium, 8 p.m., charge. Additional information: (606) 783-2886.

Nov. 14-19, Theatre: "Quilters," Kibbey Theatre, 8 p.m., except Nov. 19, 2 p.m., charge. Additional information: (606) 783-2170.

Nov. 15-Dec. 15, Art Exhibit: Faculty Show, Claypool-Young Art Building, 8 a.m.-4 p.m., weekdays, free. Opening reception, Nov. 15, 7 p.m. Additional information: (606) 783-2766.

Nov. 15, Concert: MSU Jazz Ensemble I, Duncan Recital Hall, Baird Music Hall, 8 p.m., free. Dr. Gordon Towell, director. Additional information: (606) 783-2473.

Nov. 16, Guest Recital: "The Brass Music of Brian Balmages," Duncan Recital Hall, Baird Music Hall, 8 p.m., free. Additional information: (606) 783-2473.

Nov. 18, MSU Ramada Inn Tip-Off Classic: MSU vs. Glenville State College, Academic-Athletic Center, 4 p.m., charge. Additional information: (606) 783-2126.

Nov. 19, MSU Ramada Inn Tip-Off Classic: MSU vs. Texas A & M University, Academic-Athletic Center, 4 p.m., charge. Additional information: (606) 783-2126.

Nov. 18, Eagle Football: MSU vs. Westminster College, Jayne Stadium, 12:30 p.m., charge. Additional information: (606) 783-2020.

Nov. 20, Eagle Basketball: MSU vs. Huntington College, Academic-Athletic Center, 7:30 p.m., charge. Additional information: (606) 783-2087.

Nov. 25, Eagle Basketball: MSU vs. College of Mount St. Joseph, Academic-Athletic Center, 7:30 p.m., charge. Additional information: (606) 783-2087.

(MORE)

November highlights
3-3-3-3

Nov. 27, American Red Cross Blood Drive, Button Drill Room, all day. Additional information:
(606) 783-5124.

Nov. 28, Concert: MSU OperaWorks, Duncan Recital Hall, Baird Music Hall, 8 p.m., free .
Dr. Roma Prindle, director. Additional information: (606) 783-2473.

Nov. 29, Speaker: "Your Health for Optimum Living," Dr. Sunyatta Amen, naturopathic
physician and syndicated columnist, Commonwealth Room, Adron Doran University
Center, 7 p.m. Additional information: (606) 783-2129.

Nov. 30, Holiday tree lighting activities, campus, 4:30-6 p.m. Additional information:
(606) 783-2071.

Nov. 30, Concert: MSU Concert Band, Duncan Recital Hall, Baird Music Hall, 8 p.m., free.
Dr. Susan Creasap, director. Additional information: (606) 783-2473.

Due to early press deadlines, some listings may be subject to change.

####

9-11-00rdm

News

University Communications

Pauline Young, Director

Morehead State University

UPO Box 1100

Morehead, KY 40351-1689

(606) 783-2030

Sept. 12, 2000

FOR IMMEDIATE RELEASE

MOREHEAD, Ky.---An exhibit featuring the work of four artists from around the country will be on display in Morehead State University's main gallery of the Claypool-Young Art Building beginning Monday, Oct. 2.

The opening reception for "Marshutz, Blanch, Abrahamson, Loewenstein" is set for Wednesday, Oct. 4, 5-7 p.m. The gallery is open Monday through Friday, 8 a.m.-4 p.m. There is no admission charge.

A committee of MSU Department of Art faculty chose the artists—Roger Marshutz, Natalia Blanch, Mark Abrahamson and Daniel Loewenstein—for the show, which will run through Friday, Nov. 3.

From Los Angeles, Marshutz constructs portraits by using photographic images and voice recordings. "His mixed media works give a voice to marginalized segments of our society," said Jennifer Reis, art gallery coordinator.

A native of Hyattsville, Md., Blanch records her voice reading prayers, then etches her interpretation of the sound into iron and copper. "In 'Writing of Sound,' she explores the inner resonance of sound," Reis said.

Abrahamson of Stanwood, Wash., "depicts images of water and the impact of land use on it," Reis said. On display will be a series of aerial photographs of the Hudson River in New York.

Loewenstein, an assistant professor of art at the University of Washington in Seattle, is a sculptor. "He strives to transform the mundane into objects of fascination," Reis said.

####

rdm

Photo

University Communications

Pauline Young, Director

Morehead State University

UPO Box 1100

Morehead, KY 40351-1689

(606) 783-2030

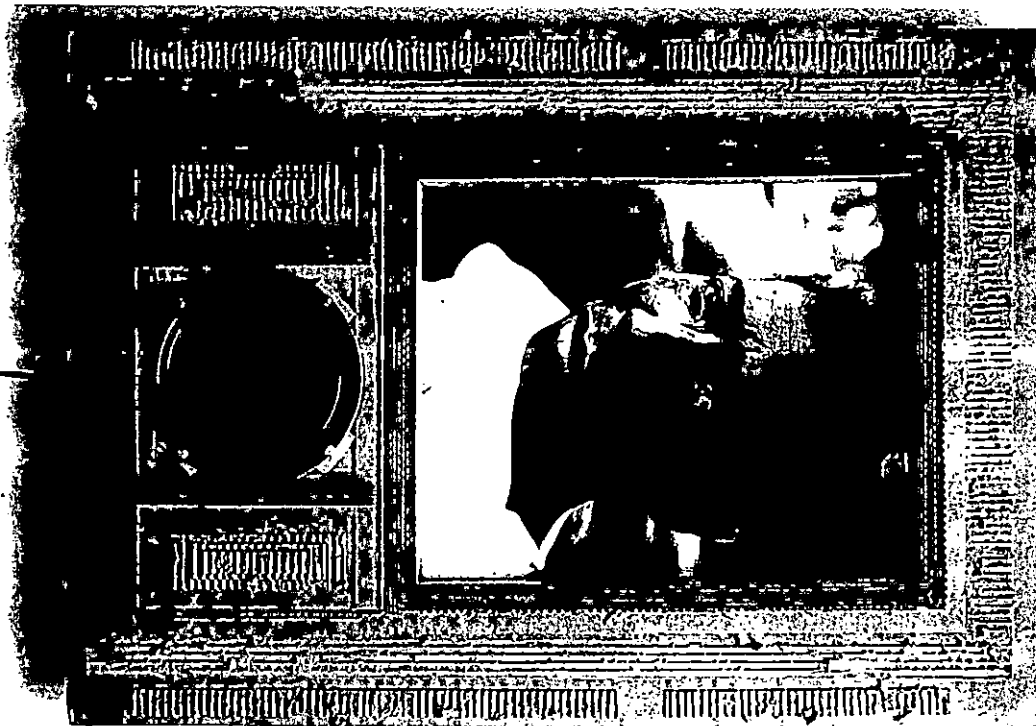
GROUP SHOW WILL OPEN AT MSU

A multi-media work, titled "Homeless: David" by Roger Marshutz of Los Angeles, will be on display in the main gallery of the Claypool-Young Art Building at Morehead State University, Oct. 2 through Nov. 3. The work is part of a group show by four individuals, Mark Abrahamson of Stanwood, Wash., Natalia Blanch of Hyattsville, Md., Daniel Loewenstein of Seattle, Wash., and Marshutz. The gallery is open Monday through Friday, 8 a.m. until 4 p.m. There is no charge for viewing.

(MSU photo)

9-12-00

MSU is an affirmative action equal opportunity educational institution.



News

University Communications

Pauline Young, Director

Morehead State University

UPO Box 1100

Morehead, KY 40351-1689

(606) 783-2030

Sept. 12, 2000

FOR IMMEDIATE RELEASE

MOREHEAD, Ky.---The talent of faculty members from Morehead State University's Department of Music will be presented in the Annual Faculty Showcase Recital on Tuesday, Sept. 26. This year's performance marks the 14th consecutive year of this event and as a special gift to the continuing support of our patrons to the music programs, there will be no admission charge.

The performance will begin at 8 p.m. in Duncan Recital Hall.

The faculty members and their instruments/expertise are:

Michael Acord, clarinet; Stacy Baker, tuba; Sandra Derby, soprano; Terry Durbin, violin; Amy Jones, trumpet; Jeanie Lee, trombone; David Oyen, bassoon, Raymond Ross, guitar; and Dr. Gordon Towell, saxophone; assistant professors;

Jay Flippin, keyboards; Dr. Curtis Hammond, horn; Frank Oddis, drum set; Dr. Robert Pritchard, flute, Dr. Roma Prindle, soprano; Dr. Paul Taylor, piano; John Viton, oboe, associate professors; and Larry Keenan, keyboards, professor.

Also participating will be Mary Ellen McNeill, staff accompanist, piano; Deb Eastwood, visiting artist, trumpet; and J.T. Cure, MSU junior from **Elkhorn City**, acoustic bass.

The evening's program will include a variety of music for all ages. Contributions to the Music Scholarship Fund will be accepted at the door.

Additional information is available by calling the Department of Music at (606) 783-2473.

####

News

University Communications

Pauline Young, Director

Morehead State University

UPO Box 1100

Morehead, KY 40351-1689

(606) 783-2030

Sept. 13, 2000

FOR IMMEDIATE RELEASE

MOREHEAD, Ky.---Jerry Umberger of Ashland, who has devoted nearly 30 years of his life to educating students of East Kentucky, is the newest member of Morehead State University's Board of Regents.

Umberger was appointed to a six-year term by Gov. Paul Patton. He will take the oath of office at the Board's quarterly meeting on Friday, Sept. 15, on the campus.

After completing a college degree, Umberger began his first teaching position at Wurtland High School in 1971; the school consolidated with McKell and Greenup two years later to become Greenup County High School. During the 13 years with the Greenup County Board of Education, he taught math, health, physical education and driver's education. For six years, from 1971 until 1980, he added the role of head basketball coach.

In 1984, Umberger moved to the Ashland Independent School System and joined the faculty at Paul G. Blazer High School. He served as a health, physical education and driver education teacher from 1984 until 1986; head basketball coach from 1986 until 1988; athletic director from 1989 until 1998; and assistant principal from 1990 until 1998 when he retired with more than 27 years in education.

Recently he accepted an appointment to serve as interim assistant principal at PBHS for 100 days.

Active in numerous professional and civic organizations, he is a member of Ashland Optimist Club, Benevolent and Protective Order of Elks Lodge #350 and its Scholarship Committee, and the South Ashland Methodist Church where he is active on the administrative board.

An Ashland native, Umberger is a three-time graduate of Morehead State University. He earned a Bachelor of Science degree in health, physical education and recreation in 1970, a Master of Arts degree in 1979, and the Rank I certification in 1989, both in secondary education.

A long-time supporter of MSU, Umberger is married to the former Mary Elizabeth (Beth) Wheeler, a two-time graduate of the University. They are the parents of two sons: Travis and Kyle, an MSU junior who has been a member of the Eagle Basketball team for two years.

####

News

University Communications

Pauline Young, Director

Morehead State University

UPO Box 1100

Morehead, KY 40351-1689

(606) 783-2030

Sept. 13, 2000

FOR IMMEDIATE RELEASE

MOREHEAD, Ky.---Morehead State University's College of Science and Technology will hold its Mathematics, Physics and Advanced Technology Exploration Day for high school students on Wednesday, Oct. 4, from 8:30 a.m. to 1:30 p.m.

Throughout the day, student teams will participate in learning activities that involve math, physics and technology. Each team will be comprised of students from various schools and prizes will be awarded to groups with high scores. Teachers will have the opportunity to take part in activities designed especially for them.

All students must be registered by **Wednesday, Sept. 20**. Space is limited to approximately 30 advanced math and/or physics juniors and seniors from each school. A fee of \$4 per student must be paid by **Friday, Sept. 22**.

Additional information is available from the Department of Mathematical Sciences Web site at www.moreheadstate.edu/colleges/science/math/mpate00/mpate00_index.htm, or by calling Joyce Saxon, assistant professor of mathematics and MPATE coordinator, at (606) 783-2923.

####

rdm

News

University Communications

Pauline Young, Director

Morehead State University

UPO Box 1100

Morehead, KY 40351-1689

(606) 783-2030

Sept. 13, 2000

FOR IMMEDIATE RELEASE

MOREHEAD, Ky.---More than 50 employers are expected to visit the Morehead State University campus for the Fall Job Fair and Graduate School Day on Tuesday, Oct. 3. Several other businesses have job listings available on the Internet.

Any person interested in full-time or part-time employment, co-ops, or in enrolling in graduate school may participate in the job fair, which runs from 10 a.m. to 1 p.m. in the Crager Room of the Adron Doran University Center.

Among the employers scheduled to attend the job fair are representatives from the service industry and health-related fields, and various firms in Kentucky and surrounding states. The registrants include the Bureau of Alcohol, Tobacco and Firearms; Mitsubishi Electric Automotive America, Inc.; State Farm Insurance; Radisson Plaza Hotel; and Walgreens. A number of governmental agencies will be represented, on campus or via the Internet, including the U.S. Navy, the Kentucky Department of Fish and Wildlife and the Kentucky State Police.

For those seeking additional schooling, information on the graduate programs at Northern Kentucky University, Murray State University and MSU will be provided as well as admission requirements for the Salmon P. Chase School of Law.

“Employers will be available to provide information about their companies and to accept resumes,” said Dr. Mike Hopper, career services director. “Many companies will conduct initial interviews,” he added.

The job fair is free and open to the public. Additional information on the fair and the businesses to be represented, are available on the Web at www.moreheadstate.edu/fall_jobfair/ or by calling career services at (606) 783-2233.

####

js

News

University Communications

Pauline Young, Director

Morehead State University

UPO Box 1100

Morehead, KY 40351-1689

(606) 783-2030

Sept. 13, 2000

FOR IMMEDIATE RELEASE

MOREHEAD, Ky. ---Rowan County Senior High School will participate in Morehead State University's annual Blue and Gold Festival of Marching Bands on Saturday, Sept. 30, from 9 a.m. to 10 p.m. in Jayne Stadium on the campus.

"We've participated for the last 10 years or so," said Rex Payton, band director at the high school. "It's one of the better ones in the state because it focuses more on education than competition."

Approximately 40 high schools from Kentucky and Indiana are participating in this year's event. During the festival, MSU's Marching Band will give an exhibition performance.

Rowan County's 44-member band will perform "Faces of the Jungle," which is taken from different musical pieces: "African Ceremony, Song and Ritual" and "After a Gentle Rain." The group, led by co-field commanders Jenni Cummins and Virginia Weaver, started practicing the work at a camp in late July.

Sanctioned by the Kentucky Music Education Association, the Blue and Gold Festival features a non-competitive format. Each band will receive a rating from a KMEA panel of adjudicators, as well as an individual mini-clinic. "This reinforces what the directors have taught," Payton said.

Tickets to the festival, available at the gate, are \$5 for adults, \$3 for children 12 and under, and free to those under 5-years-old.

Additional information is available by calling MSU's Office of Bands at (606) 783-2486.

####

js/rdm

News

University Communications

Pauline Young, Director

Morehead State University

UPO Box 1100

Morehead, KY 40351-1689

(606) 783-2030

Sept. 13, 2000

FOR IMMEDIATE RELEASE

MOREHEAD, Ky. ---Rowan County Senior High School will participate in Morehead State University's annual Blue and Gold Festival of Marching Bands on Saturday, Sept. 30, from 9 a.m. to 10 p.m. in Jayne Stadium on the campus.

"We've participated for the last 10 years or so," said Rex Payton, band director at the high school. "It's one of the better ones in the state because it focuses more on education than competition."

Approximately 40 high schools from Kentucky and Indiana are participating in this year's event. During the festival, MSU's Marching Band will give an exhibition performance.

Rowan County's 44-member band will perform "Faces of the Jungle," which is taken from different musical pieces: "African Ceremony, Song and Ritual" and "After a Gentle Rain." The group, led by co-field commanders Jenni Cummins and Virginia Weaver, started practicing the work at a camp in late July.

Sanctioned by the Kentucky Music Education Association, the Blue and Gold Festival features a non-competitive format. Each band will receive a rating from a KMEA panel of adjudicators, as well as an individual mini-clinic. "This reinforces what the directors have taught," Payton said.

Tickets to the festival, available at the gate, are \$5 for adults, \$3 for children 12 and under, and free to those under 5-years-old.

Additional information is available by calling MSU's Office of Bands at (606) 783-2486.

####

js/rdm

News

University Communications

Pauline Young, Director

Morehead State University

UPO Box 1100

Morehead, KY 40351-1689

(606) 783-2030

Sept. 13, 2000

FOR IMMEDIATE RELEASE

MOREHEAD, Ky.---**Montgomery County High School** will participate in Morehead State University's annual Blue and Gold Festival of Marching Bands on Saturday, Sept. 30. The activity will be held at MSU's Jayne Stadium from 9 a.m. to 10 p.m.

Keith Coleman is the band director at MCHS.

Approximately 40 Kentucky high schools are participating in this fall's showcase. MSU's Marching Band will give an exhibition performance that day.

Sanctioned by the Kentucky Music Education Association, the Blue and Gold Festival offers a non-competitive format. Each band will receive a rating from a KMEA panel of adjudicators, as well as an individual mini-clinic.

Tickets to the festival, available at the gate, are \$5 for adults, \$3 for children 12 and under, and free to those under five.

Additional information is available by calling MSU's Office of Bands at (606) 783-2486.

####

js

News

University Communications

Pauline Young, Director

Morehead State University

UPO Box 1100

Morehead, KY 40351-1689

(606) 783-2030

Sept. 13, 2000

FOR IMMEDIATE RELEASE

MOREHEAD, Ky.---**Danville High School** will participate in Morehead State University's annual Blue and Gold Festival of Marching Bands on Saturday, Sept. 30. The activity will be held at MSU's Jayne Stadium from 9 a.m. to 10 p.m.

Elaine Hammonds is the band director at DHS.

Approximately 40 Kentucky high schools are participating in this fall's showcase. MSU's Marching Band will give an exhibition performance that day.

Sanctioned by the Kentucky Music Education Association, the Blue and Gold Festival offers a non-competitive format. Each band will receive a rating from a KMEA panel of adjudicators, as well as an individual mini-clinic.

Tickets to the festival, available at the gate, are \$5 for adults, \$3 for children 12 and under, and free to those under five.

Additional information is available by calling MSU's Office of Bands at (606) 783-2486.

####

js

News

University Communications

Pauline Young, Director

Morehead State University

UPO Box 1100

Morehead, KY 40351-1689

(606) 783-2030

Sept. 13, 2000

FOR IMMEDIATE RELEASE

MOREHEAD, Ky.---Two **Campbell County** schools will participate in Morehead State University's annual Blue and Gold Festival of Marching Bands on Saturday, Sept. 30. The activity will be held at MSU's Jayne Stadium from 9 a.m. to 10 p.m.

Band students from Dayton High School, under the direction of Kevin Grow, and Bellevue High School, under the direction of Tim Kennedy, are among the participants.

Approximately 40 Kentucky high schools are participating in this fall's showcase. MSU's Marching Band will give an exhibition performance that day.

Sanctioned by the Kentucky Music Education Association, the Blue and Gold Festival offers a non-competitive format. Each band will receive a rating from a KMEA panel of adjudicators, as well as an individual mini-clinic.

Tickets to the festival, available at the gate, are \$5 for adults, \$3 for children 12 and under, and free to those under five.

Additional information is available by calling MSU's Office of Bands at (606) 783-2486.

####

js

News

University Communications

Pauline Young, Director

Morehead State University

UPO Box 1100

Morehead, KY 40351-1689

(606) 783-2030

Sept. 13, 2000

FOR IMMEDIATE RELEASE

MOREHEAD, Ky.---Two **Jefferson County** high schools will participate in Morehead State University's annual Blue and Gold Festival of Marching Bands on Saturday, Sept. 30. The activity will be held at MSU's Jayne Stadium from 9 a.m. to 10 p.m.

Band students from Eastern High School, under the direction of Mike Arthur, and DuPont Manual High School, under the direction of Curtis Essig, will participate.

Approximately 40 Kentucky high schools are participating in this fall's showcase. MSU's Marching Band will give an exhibition performance that day.

Sanctioned by the Kentucky Music Education Association, the Blue and Gold Festival offers a non-competitive format. Each band will receive a rating from a KMEA panel of adjudicators, as well as an individual mini-clinic.

Tickets to the festival, available at the gate, are \$5 for adults, \$3 for children 12 and under, and free to those under five.

Additional information is available by calling MSU's Office of Bands at (606) 783-2486.

####

js

News

University Communications

Pauline Young, Director

Morehead State University

UPO Box 1100

Morehead, KY 40351-1689

(606) 783-2030

Sept. 13, 2000

FOR IMMEDIATE RELEASE

MOREHEAD, Ky. ---**Pineville High School** will participate in Morehead State University's annual Blue and Gold Festival of Marching Bands on Saturday, Sept. 30. The activity will be held at MSU's Jayne Stadium from 9 a.m. to 10 p.m.

Jackie Thompson is PHS' band director.

Approximately 40 Kentucky high schools are participating in this fall's showcase. MSU's Marching Band will give an exhibition performance that day.

Sanctioned by the Kentucky Music Education Association, the Blue and Gold Festival offers a non-competitive format. Each band will receive a rating from a KMEA panel of adjudicators, as well as an individual mini-clinic.

Tickets to the festival, available at the gate, are \$5 for adults, \$3 for children 12 and under, and free to those under five.

Additional information is available by calling MSU's Office of Bands at (606) 783-2486.

####

js

News

University Communications

Pauline Young, Director

Morehead State University

UPO Box 1100

Morehead, KY 40351-1689

(606) 783-2030

Sept. 13, 2000

FOR IMMEDIATE RELEASE

MOREHEAD, Ky.---Two **Fayette County** high schools will participate in Morehead State University's annual Blue and Gold Festival of Marching Bands on Saturday, Sept. 30. The activity will be held at MSU's Jayne Stadium from 9 a.m. to 10 p.m.

Band students from Bryan Station Traditional High School, under the direction of Shawn Parrish, and Paul Laurence Dunbar High School, under the direction of Jeff Hood, will participate.

Approximately 40 Kentucky high schools are participating in this fall's showcase. MSU's Marching Band will give an exhibition performance that day.

Sanctioned by the Kentucky Music Education Association, the Blue and Gold Festival offers a non-competitive format. Each band will receive a rating from a KMEA panel of adjudicators, as well as an individual mini-clinic.

Tickets to the festival, available at the gate, are \$5 for adults, \$3 for children 12 and under, and free to those under five.

Additional information is available by calling MSU's Office of Bands at (606) 783-2486.

####

js

News

University Communications

Pauline Young, Director

Morehead State University

UPO Box 1100

Morehead, KY 40351-1689

(606) 783-2030

Sept. 13, 2000

FOR IMMEDIATE RELEASE

MOREHEAD, Ky.---**Bracken County High School** will participate in Morehead State University's annual Blue and Gold Festival of Marching Bands on Saturday, Sept. 30. The activity will be held at MSU's Jayne Stadium from 9 a.m. to 10 p.m.

Dan Black is the band director at BCHS.

Approximately 40 Kentucky high schools are participating in this fall's showcase. MSU's Marching Band will give an exhibition performance that day.

Sanctioned by the Kentucky Music Education Association, the Blue and Gold Festival offers a non-competitive format. Each band will receive a rating from a KMEA panel of adjudicators, as well as an individual mini-clinic.

Tickets to the festival, available at the gate, are \$5 for adults, \$3 for children 12 and under, and free to those under five.

Additional information is available by calling MSU's Office of Bands at (606) 783-2486.

####

js

News

University Communications

Pauline Young, Director

Morehead State University

UPO Box 1100

Morehead, KY 40351-1689

(606) 783-2030

Sept. 13, 2000

FOR IMMEDIATE RELEASE

MOREHEAD, Ky.---Two **Pike County** high schools will participate in Morehead State University's annual Blue and Gold Festival of Marching Bands on Saturday, Sept. 30. The activity will be held at MSU's Jayne Stadium from 9 a.m. to 10 p.m.

Band students from Pike County Central High School, under the direction of Lee Burke, and Shelby Valley High School, under the direction of Kevin Bowling, will participate.

Approximately 40 Kentucky high schools are participating in this fall's showcase. MSU's Marching Band will give an exhibition performance that day.

Sanctioned by the Kentucky Music Education Association, the Blue and Gold Festival features a non-competitive format. Each band will receive a rating from a KMEA panel of adjudicators, as well as an individual mini-clinic.

Tickets to the festival, available at the gate, are \$5 for adults, \$3 for children 12 and under, and free to those under five.

Additional information is available by calling MSU's Office of Bands at (606) 783-2486.

#####

js

News

University Communications

Pauline Young, Director

Morehead State University

UPO Box 1100

Morehead, KY 40351-1689

(606) 783-2030

Sept. 13, 2000

FOR IMMEDIATE RELEASE

MOREHEAD, Ky.---**Whitley County High School** will participate in Morehead State University's annual Blue and Gold Festival of Marching Bands on Saturday, Sept. 30. The activity will be held at MSU's Jayne Stadium from 9 a.m. to 10 p.m.

Jenny Collins is the band director at WCHS.

Approximately 40 Kentucky high schools are participating in this fall's showcase. MSU's Marching Band will give an exhibition performance that day.

Sanctioned by the Kentucky Music Education Association, the Blue and Gold Festival offers a non-competitive format. Each band will receive a rating from a KMEA panel of adjudicators, as well as an individual mini-clinic.

Tickets to the festival, available at the gate, are \$5 for adults, \$3 for children 12 and under, and free to those under five.

Additional information is available by calling MSU's Office of Bands at (606) 783-2486.

####

js

News

University Communications

Pauline Young, Director

Morehead State University

UPO Box 1100

Morehead, KY 40351-1689

(606) 783-2030

Sept. 13, 2000

FOR IMMEDIATE RELEASE

MOREHEAD, Ky. ---**Mason County High School** will participate in Morehead State University's annual Blue and Gold Festival of Marching Bands on Saturday, Sept. 30. The activity will be held at MSU's Jayne Stadium from 9 a.m. to 10 p.m.

Doug Calland is the band director at MCHS.

Approximately 40 Kentucky high schools are participating in this fall's showcase. MSU's Marching Band will give an exhibition performance that day.

Sanctioned by the Kentucky Music Education Association, the Blue and Gold Festival offers a non-competitive format. Each band will receive a rating from a KMEA panel of adjudicators, as well as an individual mini-clinic.

Tickets to the festival, available at the gate, are \$5 for adults, \$3 for children 12 and under, and free to those under five.

Additional information is available by calling MSU's Office of Bands at (606) 783-2486.

####

js

News

University Communications

Pauline Young, Director

Morehead State University

UPO Box 1100

Morehead, KY 40351-1689

(606) 783-2030

Sept. 13, 2000

FOR IMMEDIATE RELEASE

MOREHEAD, Ky.---**Pulaski County High School** will participate in Morehead State University's annual Blue and Gold Festival of Marching Bands on Saturday, Sept. 30. The activity will be held at MSU's Jayne Stadium from 9 a.m. to 10 p.m.

Jeremy Cole is the band director at PCHS.

Approximately 40 Kentucky high schools are participating in this fall's showcase. MSU's Marching Band will give an exhibition performance that day.

Sanctioned by the Kentucky Music Education Association, the Blue and Gold Festival offers a non-competitive format. Each band will receive a rating from a KMEA panel of adjudicators, as well as an individual mini-clinic.

Tickets to the festival, available at the gate, are \$5 for adults, \$3 for children 12 and under, and free to those under five.

Additional information is available by calling MSU's Office of Bands at (606) 783-2486.

####

js

News

University Communications

Pauline Young, Director

Morehead State University

UPO Box 1100

Morehead, KY 40351-1689

(606) 783-2030

Sept. 13, 2000

FOR IMMEDIATE RELEASE

MOREHEAD, Ky.---**George Rogers Clark High School** will participate in Morehead State University's annual Blue and Gold Festival of Marching Bands on Saturday, Sept. 30. The activity will be held at MSU's Jayne Stadium from 9 a.m. to 10 p.m.

Eddie Prichard is the band director at GRCHS.

Approximately 40 Kentucky high schools are participating in this fall's showcase. MSU's Marching Band will give an exhibition performance that day.

Sanctioned by the Kentucky Music Education Association, the Blue and Gold Festival offers a non-competitive format. Each band will receive a rating from a KMEA panel of adjudicators, as well as an individual mini-clinic.

Tickets to the festival, available at the gate, are \$5 for adults, \$3 for children 12 and under, and free to those under five.

Additional information is available by calling MSU's Office of Bands at (606) 783-2486.

####

js

News

University Communications

Pauline Young, Director

Morehead State University

UPO Box 1100

Morehead, KY 40351-1689

(606) 783-2030

Sept. 13, 2000

FOR IMMEDIATE RELEASE

MOREHEAD, Ky.---Three **Boyd County** high schools will participate in Morehead State University's annual Blue and Gold Festival of Marching Bands on Saturday, Sept. 30. The activity will be held at MSU's Jayne Stadium from 9 a.m. to 10 p.m.

Band students who will participate include Paul G. Blazer High School, under the direction of Terry Thompson; Fairview High School, under the direction of Keith Simmons; and Boyd County High School, under the direction of Tony Sparks.

Approximately 40 Kentucky high schools are participating in this fall's showcase. MSU's Marching Band will give an exhibition performance that day.

Sanctioned by the Kentucky Music Education Association, the Blue and Gold Festival offers a non-competitive format. Each band will receive a rating from a KMEA panel of adjudicators, as well as an individual mini-clinic.

Tickets to the festival, available at the gate, are \$5 for adults, \$3 for children 12 and under, and free to those under five.

Additional information is available by calling MSU's Office of Bands at (606) 783-2486.

#####

js

News

University Communications

Pauline Young, Director

Morehead State University

UPO Box 1100

Morehead, KY 40351-1689

(606) 783-2030

Sept. 13, 2000

FOR IMMEDIATE RELEASE

MOREHEAD, Ky.---**Mercer County High School** will participate in Morehead State University's annual Blue and Gold Festival of Marching Bands on Saturday, Sept. 30. The activity will be held at MSU's Jayne Stadium from 9 a.m. to 10 p.m.

Jeff Meadows is the band director at MCHS.

Approximately 40 Kentucky high schools are participating in this fall's showcase. MSU's Marching Band will give an exhibition performance that day.

Sanctioned by the Kentucky Music Education Association, the Blue and Gold Festival offers a non-competitive format. Each band will receive a rating from a KMEA panel of adjudicators, as well as an individual mini-clinic.

Tickets to the festival, available at the gate, are \$5 for adults, \$3 for children 12 and under, and free to those under five.

Additional information is available by calling MSU's Office of Bands at (606) 783-2486.

####

js

News

University Communications

Pauline Young, Director

Morehead State University

UPO Box 1100

Morehead, KY 40351-1689

(606) 783-2030

Sept. 13, 2000

FOR IMMEDIATE RELEASE

MOREHEAD, Ky.---**Morgan County High School** will participate in Morehead State University's annual Blue and Gold Festival of Marching Bands on Saturday, Sept. 30. The activity will be held at MSU's Jayne Stadium from 9 a.m. to 10 p.m.

Greg Greene is the band director at MCHS.

Approximately 40 Kentucky high schools are participating in this fall's showcase. MSU's Marching Band will give an exhibition performance that day.

Sanctioned by the Kentucky Music Education Association, the Blue and Gold Festival offers a non-competitive format. Each band will receive a rating from a KMEA panel of adjudicators, as well as an individual mini-clinic.

Tickets to the festival, available at the gate, are \$5 for adults, \$3 for children 12 and under, and free to those under five.

Additional information is available by calling MSU's Office of Bands at (606) 783-2486.

#####

js

News

University Communications

Pauline Young, Director

Morehead State University

UPO Box 1100

Morehead, KY 40351-1689

(606) 783-2030

Sept. 13, 2000

FOR IMMEDIATE RELEASE

MOREHEAD, Ky.---**Lawrenceburg High School** will participate in Morehead State University's annual Blue and Gold Festival of Marching Bands on Saturday, Sept. 30. The activity will be held at MSU's Jayne Stadium from 9 a.m. to 10 p.m.

Susan Cassidy is the band director at LHS.

Approximately 40 high schools are participating in this fall's showcase. MSU's Marching Band will give an exhibition performance that day.

Sanctioned by the Kentucky Music Education Association, the Blue and Gold Festival offers a non-competitive format. Each band will receive a rating from a KMEA panel of adjudicators, as well as an individual mini-clinic.

Tickets to the festival, available at the gate, are \$5 for adults, \$3 for children 12 and under, and free to those under five.

Additional information is available by calling MSU's Office of Bands at (606) 783-2486.

####

js

News

University Communications

Pauline Young, Director

Morehead State University

UPO Box 1100

Morehead, KY 40351-1689

(606) 783-2030

Sept. 13, 2000

FOR IMMEDIATE RELEASE

MOREHEAD, Ky.---**Lewis County High School** will participate in Morehead State University's annual Blue and Gold Festival of Marching Bands on Saturday, Sept. 30. The activity will be held at MSU's Jayne Stadium from 9 a.m. to 10 p.m.

Sherri Stanfield is the band director at LCHS.

Approximately 40 Kentucky high schools are participating in this fall's showcase. MSU's Marching Band will give an exhibition performance that day.

Sanctioned by the Kentucky Music Education Association, the Blue and Gold Festival offers a non-competitive format. Each band will receive a rating from a KMEA panel of adjudicators, as well as an individual mini-clinic.

Tickets to the festival, available at the gate, are \$5 for adults, \$3 for children 12 and under, and free to those under five.

Additional information is available by calling MSU's Office of Bands at (606) 783-2486.

####

js

News

University Communications

Pauline Young, Director

Morehead State University

UPO Box 1100

Morehead, KY 40351-1689

(606) 783-2030

Sept. 13, 2000

FOR IMMEDIATE RELEASE

MOREHEAD, Ky.---**Lawrence County High School** will participate in Morehead State University's annual Blue and Gold Festival of Marching Bands on Saturday, Sept. 30. The activity will be held at MSU's Jayne Stadium from 9 a.m. to 10 p.m.

Jeff Ware is the band director at LCHS.

Approximately 40 Kentucky high schools are participating in this fall's showcase. MSU's Marching Band will give an exhibition performance that day.

Sanctioned by the Kentucky Music Education Association, the Blue and Gold Festival offers a non-competitive format. Each band will receive a rating from a KMEA panel of adjudicators, as well as an individual mini-clinic.

Tickets to the festival, available at the gate, are \$5 for adults, \$3 for children 12 and under, and free to those under five.

Additional information is available by calling MSU's Office of Bands at (606) 783-2486.

####

js

News

University Communications

Pauline Young, Director

Morehead State University

UPO Box 1100

Morehead, KY 40351-1689

(606) 783-2030

Sept. 13, 2000

FOR IMMEDIATE RELEASE

MOREHEAD, Ky.---**Prestonsburg High School** will participate in Morehead State University's annual Blue and Gold Festival of Marching Bands on Saturday, Sept. 30. The activity will be held at MSU's Jayne Stadium from 9 a.m. to 10 p.m.

Mike Bell is the band director at PHS.

Approximately 40 Kentucky high schools are participating in this fall's showcase. MSU's Marching Band will give an exhibition performance that day.

Sanctioned by the Kentucky Music Education Association, the Blue and Gold Festival features a non-competitive format. Each band will receive a rating from a KMEA panel of adjudicators, as well as an individual mini-clinic.

Tickets to the festival, available at the gate, are \$5 for adults, \$3 for children 12 and under, and free to those under five.

Additional information is available by calling MSU's Office of Bands at (606) 783-2486.

####

js

News

University Communications

Pauline Young, Director

Morehead State University

UPO Box 1100

Morehead, KY 40351-1689

(606) 783-2030

Sept. 13, 2000

FOR IMMEDIATE RELEASE

MOREHEAD, Ky.---**Gallatin County High School** will participate in Morehead State University's annual Blue and Gold Festival of Marching Bands on Saturday, Sept. 30. The activity will be held at MSU's Jayne Stadium from 9 a.m. to 10 p.m.

Keith Howard is the band director at GCHS.

Approximately 40 Kentucky high schools are participating in this fall's showcase. MSU's Marching Band will give an exhibition performance that day.

Sanctioned by the Kentucky Music Education Association, the Blue and Gold Festival offers a non-competitive format. Each band will receive a rating from a KMEA panel of adjudicators, as well as an individual mini-clinic.

Tickets to the festival, available at the gate, are \$5 for adults, \$3 for children 12 and under, and free to those under five.

Additional information is available by calling MSU's Office of Bands at (606) 783-2486.

####

js

News

University Communications

Pauline Young, Director

Morehead State University

UPO Box 1100

Morehead, KY 40351-1689

(606) 783-2030

Sept. 13, 2000

FOR IMMEDIATE RELEASE

MOREHEAD, Ky.---**Lee County High School** will participate in Morehead State University's annual Blue and Gold Festival of Marching Bands on Saturday, Sept. 30. The activity will be held at MSU's Jayne Stadium from 9 a.m. to 10 p.m.

Tony Barrett is the band director at LCHS.

Approximately 40 Kentucky high schools are participating in this fall's showcase. MSU's Marching Band will give an exhibition performance that day.

Sanctioned by the Kentucky Music Education Association, the Blue and Gold Festival offers a non-competitive format. Each band will receive a rating from a KMEA panel of adjudicators, as well as an individual mini-clinic.

Tickets to the festival, available at the gate, are \$5 for adults, \$3 for children 12 and under, and free to those under five.

Additional information is available by calling MSU's Office of Bands at (606) 783-2486.

####

js

News

University Communications

Pauline Young, Director

Morehead State University

UPO Box 1100

Morehead, KY 40351-1689

(606) 783-2030

Sept. 13, 2000

FOR IMMEDIATE RELEASE

MOREHEAD, Ky.---**Owen County High School** will participate in Morehead State University's annual Blue and Gold Festival of Marching Bands on Saturday, Sept. 30. The activity will be held at MSU's Jayne Stadium from 9 a.m. to 10 p.m.

Mathew Love is the band director at OCHS.

Approximately 40 Kentucky high schools are participating in this fall's showcase. MSU's Marching Band will give an exhibition performance that day.

Sanctioned by the Kentucky Music Education Association, the Blue and Gold Festival offers a non-competitive format. Each band will receive a rating from a KMEA panel of adjudicators, as well as an individual mini-clinic.

Tickets to the festival, available at the gate, are \$5 for adults, \$3 for children 12 and under, and free to those under five.

Additional information is available by calling MSU's Office of Bands at (606) 783-2486.

####

js

News

University Communications

Pauline Young, Director

Morehead State University

UPO Box 1100

Morehead, KY 40351-1689

(606) 783-2030

Sept. 13, 2000

FOR IMMEDIATE RELEASE

MOREHEAD, Ky.---**Conner High School** will participate in Morehead State University's annual Blue and Gold Festival of Marching Bands on Saturday, Sept. 30. The activity will be held at MSU's Jayne Stadium from 9 a.m. to 10 p.m.

Chris Peterson is the band director at CHS.

Approximately 40 Kentucky high schools are participating in this fall's showcase. MSU's marching band also will give an exhibition performance that day.

Sanctioned by the Kentucky Music Education Association, the Blue and Gold Festival offers a non-competitive format. Each band will receive a rating from a KMEA panel of adjudicators, as well as an individual mini-clinic.

Tickets to the festival, available at the gate, are \$5 for adults, \$3 for children 12 and under, and free to those under five.

Additional information is available by calling MSU's Office of Bands at (606) 783-2486.

####

js

News

University Communications

Pauline Young, Director

Morehead State University

UPO Box 1100

Morehead, KY 40351-1689

(606) 783-2030

Sept. 13, 2000

FOR IMMEDIATE RELEASE

MOREHEAD, Ky.---**Sheldon Clark High School** will participate in Morehead State University's annual Blue and Gold Festival of Marching Bands on Saturday, Sept. 30. The activity will be held at MSU's Jayne Stadium from 9 a.m. to 10 p.m.

Jason Chapman is the band director at SCHS.

Approximately 40 Kentucky high schools are participating in this fall's showcase. MSU's Marching Band will give an exhibition performance that day.

Sanctioned by the Kentucky Music Education Association, the Blue and Gold Festival offers a non-competitive format. Each band will receive a rating from a KMEA panel of adjudicators, as well as an individual mini-clinic.

Tickets to the festival, available at the gate, are \$5 for adults, \$3 for children 12 and under, and free to those under five.

Additional information is available by calling MSU's Office of Bands at (606) 783-2486.

#####

js

News

University Communications

Pauline Young, Director

Morehead State University

UPO Box 1100

Morehead, KY 40351-1689

(606) 783-2030

Sept. 13, 2000

FOR IMMEDIATE RELEASE

MOREHEAD, Ky.---**Holmes High School** will participate in Morehead State University's annual Blue and Gold Festival of Marching Bands on Saturday, Sept. 30. The activity will be held at MSU's Jayne Stadium from 9 a.m. to 10 p.m.

Frank Sloan is the band director at HHS.

Approximately 40 Kentucky high schools are participating in this fall's showcase. MSU's Marching Band will give an exhibition performance that day.

Sanctioned by the Kentucky Music Education Association, the Blue and Gold Festival offers a non-competitive format. Each band will receive a rating from a KMEA panel of adjudicators, as well as an individual mini-clinic.

Tickets to the festival, available at the gate, are \$5 for adults, \$3 for children 12 and under, and free to those under five.

Additional information is available by calling MSU's Office of Bands at (606) 783-2486.

####

js

News

University Communications

Pauline Young, Director

Morehead State University

UPO Box 1100

Morehead, KY 40351-1689

(606) 783-2030

Sept. 13, 2000

FOR IMMEDIATE RELEASE

MOREHEAD, Ky.---**Estill County High School** will participate in Morehead State University's annual Blue and Gold Festival of Marching Bands on Saturday, Sept. 30. The activity will be held at MSU's Jayne Stadium from 9 a.m. to 10 p.m.

Randy Webb is the band director at ECHS.

Approximately 40 Kentucky high schools are participating in this fall's showcase. MSU's Marching Band will give an exhibition performance that day.

Sanctioned by the Kentucky Music Education Association, the Blue and Gold Festival features a non-competitive format. Each band will receive a rating from a KMEA panel of adjudicators, as well as an individual mini-clinic.

Tickets to the festival, available at the gate, are \$5 for adults, \$3 for children 12 and under, and free to those under five.

Additional information is available by calling MSU's Office of Bands at (606) 783-2486.

####

js

News

University Communications

Pauline Young, Director

Morehead State University

UPO Box 1100

Morehead, KY 40351-1689

(606) 783-2030

Sept. 13, 2000

FOR IMMEDIATE RELEASE

MOREHEAD, Ky.---**Powell County High School** will participate in Morehead State University's annual Blue and Gold Festival of Marching Bands on Saturday, Sept. 30. The activity will be held at MSU's Jayne Stadium from 9 a.m. to 10 p.m.

Michael Estep is the band director at PCHS.

Approximately 40 Kentucky high schools are participating in this fall's showcase. MSU's Marching Band will give an exhibition performance that day.

Sanctioned by the Kentucky Music Education Association, the Blue and Gold Festival offers a non-competitive format. Each band will receive a rating from a KMEA panel of adjudicators, as well as an individual mini-clinic.

Tickets to the festival, available at the gate, are \$5 for adults, \$3 for children 12 and under, and free to those under five.

Additional information is available by calling MSU's Office of Bands at (606) 783-2486.

####

js

News

University Communications

Pauline Young, Director

Morehead State University

UPO Box 1100

Morehead, KY 40351-1689

(606) 783-2030

Sept. 13, 2000

FOR IMMEDIATE RELEASE

MOREHEAD, Ky.---**Lincoln County High School** will participate in Morehead State University's annual Blue and Gold Festival of Marching Bands on Saturday, Sept. 30. The activity will be held at MSU's Jayne Stadium from 9 a.m. to 10 p.m.

Joe Briley is the band director at LCHS.

Approximately 40 Kentucky high schools are participating in this fall's showcase. MSU's Marching Band will give an exhibition performance that day.

Sanctioned by the Kentucky Music Education Association, the Blue and Gold Festival offers a non-competitive format. Each band will receive a rating from a KMEA panel of adjudicators, as well as an individual mini-clinic.

Tickets to the festival, available at the gate, are \$5 for adults, \$3 for children 12 and under, and free to those under five.

Additional information is available by calling MSU's Office of Bands at (606) 783-2486.

####

js

News

University Communications

Pauline Young, Director

Morehead State University

UPO Box 1100

Morehead, KY 40351-1689

(606) 783-2030

Sept. 13, 2000

FOR IMMEDIATE RELEASE

MOREHEAD, Ky.--**Knott County Central High School** will participate in Morehead State University's annual Blue and Gold Festival of Marching Bands on Saturday, Sept. 30. The activity will be held at MSU's Jayne Stadium from 9 a.m. to 10 p.m.

Bob Saylor is the band director at KCCHS.

Approximately 40 Kentucky high schools are participating in this fall's showcase. MSU's Marching Band will give an exhibition performance that day.

Sanctioned by the Kentucky Music Education Association, the Blue and Gold Festival offers a non-competitive format. Each band will receive a rating from a KMEA panel of adjudicators, as well as an individual mini-clinic.

Tickets to the festival, available at the gate, are \$5 for adults, \$3 for children 12 and under, and free to those under five.

Additional information is available by calling MSU's Office of Bands at (606) 783-2486.

####

js

News

University Communications

Pauline Young, Director

Morehead State University

UPO Box 1100

Morehead, KY 40351-1689

(606) 783-2030

Sept. 13, 2000

FOR IMMEDIATE RELEASE

MOREHEAD, Ky.---**Bourbon County High School** will participate in Morehead State University's annual Blue and Gold Festival of Marching Bands on Saturday, Sept. 30. The activity will be held at MSU's Jayne Stadium from 9 a.m. to 10 p.m.

Chuck Edwards is the band director at BCHS.

Approximately 40 Kentucky high schools are participating in this fall's showcase. MSU's Marching Band will give an exhibition performance that day.

Sanctioned by the Kentucky Music Education Association, the Blue and Gold Festival offers a non-competitive format. Each band will receive a rating from a KMEA panel of adjudicators, as well as an individual mini-clinic.

Tickets to the festival, available at the gate, are \$5 for adults, \$3 for children 12 and under, and free to those under five.

Additional information is available by calling MSU's Office of Bands at (606) 783-2486.

####

js

News

University Communications

Pauline Young, Director

Morehead State University

UPO Box 1100

Morehead, KY 40351-1689

(606) 783-2030

Sept. 13, 2000

FOR IMMEDIATE RELEASE

MOREHEAD, Ky.---Two **Greenup County** high schools will participate in Morehead State University's annual Blue and Gold Festival of Marching Bands on Saturday, Sept. 30. The activity will be held at MSU's Jayne Stadium from 9 a.m. to 10 p.m.

Band students from Russell High School, under the direction of Lee Kearns, and Raceland-Worthington High School, under the direction of David Barker, will be participants.

Approximately 40 Kentucky high schools are participating in this fall's showcase. MSU's marching band also will give an exhibition performance that day.

Sanctioned by the Kentucky Music Education Association, the Blue and Gold Festival offers a non-competitive format. Each band will receive a rating from a KMEA panel of adjudicators, as well as an individual mini-clinic.

Tickets to the festival, available at the gate, are \$5 for adults, \$3 for children 12 and under, and free to those under five.

Additional information is available by calling MSU's Office of Bands at (606) 783-2486.

####

js

News

University Communications

Pauline Young, Director

Morehead State University

UPO Box 1100

Morehead, KY 40351-1689

(606) 783-2030

Sept. 14, 2000

FOR IMMEDIATE RELEASE

ASHLAND, Ky.---Small business owners will have the opportunity to broaden their knowledge in two workshops sponsored by Morehead State University's Ashland Small Business Development Center and the Ashland Alliance.

"The Beauty Industry-Taxability of Tips" will be held on Monday, Sept. 18, from 9:30 a.m. to noon. "Marketing and Public Relations" will meet on Tuesday, Sept. 19, from 1 to 3 p.m. Both sessions will be held at MSU Ashland, 1401 Winchester Ave.

The tax workshop, designed for the beauty industry, will discuss employment tax issues. The session, led by an Internal Revenue Service representative, will discuss the requirements for reporting tips, worker classification, booth rental responsibilities, as well as the Tip Reporting Alternative Commitment (TRAC). There will be no cost for this seminar.

The "Marketing and Public Relations" workshop will be taught by Bob Owen, president of Owen Communications. Participants may use the strategies taught in class to determine which methods of advertising will work best for their business.

Ideas to attract new customers and retain existing ones will be discussed and time will be allotted for questions. The cost to attend the seminar is \$20, or \$10 for Ashland Alliance members.

All training programs, sponsored or co-sponsored by the Ashland SBDC, are available to all individuals without regard to race, color, sex, creed or national origin. Special arrangements for the disabled will be made if requested in advance.

Pre-registration is necessary because of limited seating. Registration and additional information are available by calling (606) 329-8011.

####

js

News

University Communications

Pauline Young, Director

Morehead State University

UPO Box 1100

Morehead, KY 40351-1689

(606) 783-2030

Sept. 14, 2000

FOR IMMEDIATE RELEASE

MOREHEAD, Ky.---Christopher Garris, **Sandy Hook** freshman, has joined the team of students at Morehead State University's yearbook, the "Raconteur," as a staff writer and photographer.

Valedictorian of his class at Elliott County High School, he worked on that institution's yearbook, "The Echo," during his senior year. "Joining the MSU yearbook staff is an exciting step in my life," Garris said. "It is one that is sure to help guide my future and enrich my mind."

The "Raconteur" is a 96-page, four-color publication that is compiled by students to reflect the academic year, organizations, and student life.

####

sdb

News

University Communications

Pauline Young, Director

Morehead State University

UPO Box 1100

Morehead, KY 40351-1689

(606) 783-2030

Sept. 14, 2000

FOR IMMEDIATE RELEASE

MOREHEAD, Ky.---Shannon Brown, **Richmond** junior, has returned to the staff of the Morehead State University yearbook, the "Raconteur."

A Commonwealth Diploma recipient and graduate of Madison Central High School, Brown has begun her second year on staff as a writer and photographer for the yearbook. She is a philosophy major at the University.

"Working in the 'Raconteur' office is a great learning experience. I get paid for doing what I like--writing," Brown said.

A 96-page, four-color publication, the book is compiled by students to document student activities throughout the academic year.

####

sdb

News

University Communications

Pauline Young, Director

Morehead State University

UPO Box 1100

Morehead, KY 40351-1689

(606) 783-2030

Sept. 14, 2000

FOR IMMEDIATE RELEASE

MOREHEAD, Ky. ---Three Lewis County High School graduates are staff members of Morehead State University's yearbook. **Vanceburg** sophomores Kelley Esham, Melissa Stamm and Kimberly Crawford, **Wallingford** sophomore, have taken various positions at the "Raconteur."

Esham is beginning her second year of work at the "Raconteur," this time as editor. An accounting major at MSU, Esham was co-editor of her high school yearbook, "Days of Daze."

"Being on the 'Raconteur' staff is a great opportunity," Esham said. "Last year, I got to interview and write about faculty, staff, and students I would have not been able to meet otherwise. I'm looking forward to the new challenge of helping to shape the yearbook as editor this year," she added.

Psychology major Melissa Stamm is a staff writer and photographer for the MSU yearbook. The salutatorian of her high school class, she worked on the "Days of Daze" as a staff writer.

"In the following year I will get to experience the joy of seeing 'Raconteur' come together, meeting new people and working with an interesting staff," Stamm said.

Joining the team as a staff writer and photographer, Crawford is an English major. "I'm glad to have the opportunity to make a contribution to such a great part of MSU," Crawford said of her new job.

The valedictorian her high school class, she was co-editor of "Days of Daze" and a staff member of the school newspaper. She previously worked for Morehead State's student newspaper, The Trail Blazer, as a photographer.

The "Raconteur" is a 96-page, four-color publication that is compiled by students to document the academic year, student organizations, and life on the campus.

####

sdb

Photo

University Communications

Pauline Young, Director

Morehead State University

UPO Box 1100

Morehead, KY 40351-1689

(606) 783-2030

MOREHEAD STATE STUDENTS JOIN YEARBOOK STAFF

The student staff for Morehead State University's yearbook, the "Raconteur" has been assembled. The members of the 2000-2001 academic year team are: back row, from left, Shannon Brown, **Richmond** junior; Kelley Esham and Melissa Stamm, both **Vanceburg** sophomores; front row, from left, Chris Garris, **Sandy Hook** freshman; and Kimberly Crawford, **Wallingford** sophomore. Esham is serving as the editor of the publication and all other staff members are writers and photographers. The "Raconteur" is a 96-page, four-color publication that is compiled by students to document the academic year, student organizations, and life on the campus.

(MSU photo by Tim Holbrook)

9-15-00rdm

MSU is an affirmative action equal opportunity educational institution.



News

University Communications

Pauline Young, Director

Morehead State University

UPO Box 1100

Morehead, KY 40351-1689

(606) 783-2030

Sept. 15, 2000

FOR IMMEDIATE RELEASE

MOREHEAD, Ky.---Eleven of the state's higher education institutions have been awarded minigrants to participate in the grassroots effort to combat high-risk drinking in college youth.

These schools join the eight other institutions as partners in the U.S. Department of Education project, the Kentucky Network to Reduce High-Risk Drinking Among College Students. Morehead State University President Ronald G. Eaglin is the project director for the \$249,000 grant awarded last year.

These 11 schools will develop plans to assess the campus/community environment and to create and/or expand the campus coalition. "We are so fortunate to have each of the college leaders join us in our efforts to combat high-risk drinking in college youth," Dr. Eaglin said in announcing the individual campus minigrants.

The new 2000 partners--their campus leaders and coordinators--are:

Ashland Community College, Dr. Angeline G. Dvorak;

Bellarmino University, Dr. Joseph McGowan; Alice Kimble, director of wellness and health services;

Berea College, Dr. Larry Shinn; Holli Hudson, director of wellness services;

Central Kentucky Technical College, Ron W. Baugh, Ann Pennington, counselor;

Hazard Community College, Dr. G. Edward Hughes; Pamela Banks, career/transfer counselor;

Henderson Community College, Dr. Patrick Lake, Pennae L. Fuchs, assistant professor of nursing, coordinator;

Lindsey Wilson College, William Luckey Jr.; Denise Fudge, vice president of student service; Dean Adams, dean of students;

Maysville Community College, Jim Miller; Tina Baker, public relations coordinator;

Somerset Community College, Dr. Jo Marshall; Jim McFeeters, assistant professor of CIS/IT;

(MORE)

News

University Communications

Pauline Young, Director

Morehead State University

UPO Box 1100

Morehead, KY 40351-1689

(606) 783-2030

Sept. 15, 2000

FOR IMMEDIATE RELEASE

MOREHEAD, Ky.---Eleven of the state's higher education institutions, including Ashland Community College, have been awarded minigrants to participate in the grassroots effort to combat high-risk drinking in college youth.

Dr. Angeline G. Dvorak; president of ACC, is among those leaders in higher education who will be involved in this project.

These schools join the eight other institutions as partners in the U.S. Department of Education project, the Kentucky Network to Reduce High-Risk Drinking Among College Students. Morehead State University President Ronald G. Eaglin is the project director for the \$249,000 grant awarded last year.

These 11 schools will develop plans to assess the campus/community environment and to create and/or expand the campus coalition. "We are so fortunate to have each of the college leaders join us in our efforts to combat high-risk drinking in college youth," Dr. Eaglin said in announcing the individual campus minigrants.

The new 2000 partners---their campus leaders and coordinators---are:

Bellarmino University, Dr. Joseph McGowen; Alice Kimble, director of wellness and health services;

Berea College, Dr. Larry Shinn; Holli Hudson, director of wellness services;

Central Kentucky Technical College, Ron W. Baugh, Ann Pennington, counselor;

Hazard Community College, Dr. G. Edward Hughes; Pamela Banks, career/transfer counselor;

Henderson Community College, Dr. Patrick Lake, Pennae L. Fuchs, assistant professor of nursing, coordinator;

Lindsey Wilson College, William Luckey Jr.; Denise Fudge, vice president of student service; Dean Adams, dean of students;

Maysville Community College, Jim Miller; Tina Baker, public relations coordinator;

Somerset Community College, Dr. Jo Marshall; Jim McFeeters, assistant professor of CIS/IT;

(MORE)

Minigrants conference
2-2-2-2

Transylvania University, Dr. Charles L. Shearer; Michael Covert, assistant dean of students;

West Kentucky Technical College, Dr. Paul McInturff; Dr. David Cooper, admissions counselor.

Awarded mini-grants during the first of the year of the grant were St. Catharine College, Western Kentucky University, Campbellsville University, Murray State University, Eastern Kentucky University, Kentucky State University, University of Kentucky and MSU. Representatives from these post secondary institutions gathered in January to begin the process of devising plans and sharing strategies.

Each of the partners have been invited to participate in a "Moving to Action: Framework and Strategies for Campus-Based ADD Prevention" conference on the MSU campus Wednesday through Friday, Sept. 20-22, where they will fine tune the plans and outline the procedures that will be used in the coming year. The three-day workshop will be held in the Adron Doran University Center.

Judy Krug, MSU student wellness coordinator and the Kentucky network chair, will facilitate the program. Highlights of the program will include a discussion of how to implement the grant to gain the greatest rewards for the campus and community.

Upon disbursement of the grant funds, representatives from each school attended workshops where they shared experiences and looked at ways to increase the awareness of the dangers of high-risk drinking, and to streamline programs to reduce the problem and achieve the greatest results.

MSU was one of a few universities nationwide to receive the federal grant. "Alcohol abuse is the most insidious form of self-destructive behavior because too many young people do not recognize it as their enemy," Dr. Eaglin said. "Now, thanks to this grant, we will attack the problem on a statewide basis."

Additional information on the grant is available by calling Krug at (606) 783-5248.

####

Minigrants conference
2-2-2-2

Transylvania University, Dr. Charles L. Shearer; Michael Covert, assistant dean of students;

West Kentucky Technical College, Dr. Paul McInturff; Dr. David Cooper, admissions counselor.

Awarded mini-grants during the first of the year of the grant were St. Catharine College, Western Kentucky University, Campbellsville University, Murray State University, Eastern Kentucky University, Kentucky State University, University of Kentucky and MSU.

Representatives from these post secondary institutions gathered in January to begin the process of devising plans and sharing strategies.

Each of the partners have been invited to participate in a "Moving to Action: Framework and Strategies for Campus-Based ADD Prevention" conference on the MSU campus Wednesday through Friday, Sept. 20-22, where they will fine tune the plans and outline the procedures that will be used in the coming year. The three-day workshop will be held in the Adron Doran University Center.

Judy Krug, MSU student wellness coordinator and the Kentucky network chair, will facilitate the program. Highlights of the program will include a discussion of how to implement the grant to gain the greatest rewards for the campus and community.

Upon disbursement of the grant funds, representatives from each school attended workshops where they shared experiences and looked at ways to increase the awareness of the dangers of high-risk drinking, and to streamline programs to reduce the problem and achieve the greatest results.

MSU was one of a few universities nationwide to receive the federal grant. "Alcohol abuse is the most insidious form of self-destructive behavior because too many young people do not recognize it as their enemy," Dr. Eaglin said. "Now, thanks to this grant, we will attack the problem on a statewide basis."

Additional information on the grant is available by calling Krug at (606) 783-5248.

####

News

University Communications

Pauline Young, Director

Morehead State University

UPO Box 1100

Morehead, KY 40351-1689

(606) 783-2030

Sept. 15, 2000

FOR IMMEDIATE RELEASE

MOREHEAD, Ky.---Eleven of the state's higher education institutions, including Bellarmine University, have been awarded minigrants to participate in the grassroots effort to combat high-risk drinking in college youth.

Dr. Joseph McGowan, president of Bellarmine, is among those leaders in higher education who will be involved in this project. He will be assisted by Alice Kimble, director of wellness and health services.

These schools join the eight other institutions as partners in the U.S. Department of Education project, the Kentucky Network to Reduce High-Risk Drinking Among College Students. Morehead State University President Ronald G. Eaglin is the project director for the \$249,000 grant awarded last year.

These 11 schools will develop plans to assess the campus/community environment and to create and/or expand the campus coalition. "We are so fortunate to have each of the college leaders join us in our efforts to combat high-risk drinking in college youth," Dr. Eaglin said in announcing the individual campus minigrants.

The new 2000 partners--their campus leaders and coordinators--include:

Ashland Community College, Dr. Angeline G. Dvorak;

Berea College, Dr. Larry Shinn; Holli Hudson, director of wellness services;

Central Kentucky Technical College, Ron W. Baugh, Ann Pennington, counselor;

Hazard Community College, Dr. G. Edward Hughes; Pamela Banks, career/transfer counselor;

Henderson Community College, Dr. Patrick Lake, Pennae L. Fuchs, assistant professor of nursing, coordinator;

Lindsey Wilson College, William Luckey Jr.; Denise Fudge, vice president of student service; Dean Adams, dean of students;

Maysville Community College, Jim Miller; Tina Baker, public relations coordinator;

Somerset Community College, Dr. Jo Marshall; Jim McFeeters, assistant professor of CIS/IT;

(MORE)

Minigrants conference
2-2-2-2

Transylvania University, Dr. Charles L. Shearer; Michael Covert, assistant dean of students;

West Kentucky Technical College, Dr. Paul McInturff, Dr. David Cooper, admissions counselor.

Awarded mini-grants during the first of the year of the grant were St. Catharine College, Western Kentucky University, Campbellsville University, Murray State University, Eastern Kentucky University, Kentucky State University, University of Kentucky and MSU.

Representatives from these post secondary institutions gathered in January to begin the process of devising plans and sharing strategies.

Each of the partners have been invited to participate in a "Moving to Action: Framework and Strategies for Campus-Based ADD Prevention" conference on the MSU campus Wednesday through Friday, Sept. 20-22, where they will fine tune the plans and outline the procedures that will be used in the coming year. The three-day workshop will be held in the Adron Doran University Center.

Judy Krug, MSU student wellness coordinator and the Kentucky network chair, will facilitate the program. Highlights of the program will include a discussion of how to implement the grant to gain the greatest rewards for the campus and community.

Upon disbursement of the grant funds, representatives from each school attended workshops where they shared experiences and looked at ways to increase the awareness of the dangers of high-risk drinking, and to streamline programs to reduce the problem and achieve the greatest results.

MSU was one of a few universities nationwide to receive the federal grant. "Alcohol abuse is the most insidious form of self-destructive behavior because too many young people do not recognize it as their enemy," Dr. Eaglin said. "Now, thanks to this grant, we will attack the problem on a statewide basis."

Additional information on the grant is available by calling Krug at (606) 783-5248.

####

News

University Communications

Pauline Young, Director

Morehead State University

UPO Box 1100

Morehead, KY 40351-1689

(606) 783-2030

Sept. 15, 2000

FOR IMMEDIATE RELEASE

MOREHEAD, Ky.---Eleven of the state's higher education institutions, including Berea College, have been awarded minigrants to participate in the grassroots effort to combat high-risk drinking in college youth.

Larry D. Shinn, president of Berea, is among those leaders in higher education who will be involved in this project. He will be assisted by Holli Hudson, director of wellness services.

These schools join the eight other institutions as partners in the U.S. Department of Education project, the Kentucky Network to Reduce High-Risk Drinking Among College Students. Morehead State University President Ronald G. Eaglin is the project director for the \$249,000 grant awarded last year.

These 11 schools will develop plans to assess the campus/community environment and to create and/or expand the campus coalition. "We are so fortunate to have each of the college leaders join us in our efforts to combat high-risk drinking in college youth," Dr. Eaglin said in announcing the individual campus minigrants.

The new 2000 partners--their campus leaders and coordinators--include:

Ashland Community College, Dr. Angeline G. Dvorak;

Bellarmine University, Dr. Joseph McGowan; Alice Kimble, director of wellness and health services;

Central Kentucky Technical College, Ron W. Baugh, Ann Pennington, counselor;

Hazard Community College, Dr. G. Edward Hughes; Pamela Banks, career/transfer counselor;

Henderson Community College, Dr. Patrick Lake, Pennae L. Fuchs, assistant professor of nursing, coordinator;

Lindsey Wilson College, William Luckey Jr.; Denise Fudge, vice president of student service; Dean Adams, dean of students;

Maysville Community College, Jim Miller; Tina Baker, public relations coordinator;

Somerset Community College, Dr. Jo Marshall; Jim McFeeters, assistant professor of CIS/IT;

(MORE)

Minigrants conference
2-2-2-2

Transylvania University, Dr. Charles L. Shearer; Michael Covert, assistant dean of students;

West Kentucky Technical College, Dr. Paul McInturff; Dr. David Cooper, admissions counselor.

Awarded mini-grants during the first of the year of the grant were St. Catharine College, Western Kentucky University, Campbellsville University, Murray State University, Eastern Kentucky University, Kentucky State University, University of Kentucky and MSU.

Representatives from these post secondary institutions gathered in January to begin the process of devising plans and sharing strategies.

Each of the partners have been invited to participate in a "Moving to Action: Framework and Strategies for Campus-Based ADD Prevention" conference on the MSU campus Wednesday through Friday, Sept. 20-22, where they will fine tune the plans and outline the procedures that will be used in the coming year. The three-day workshop will be held in the Adron Doran University Center.

Judy Krug, MSU student wellness coordinator and the Kentucky network chair, will facilitate the program. Highlights of the program will include a discussion of how to implement the grant to gain the greatest rewards for the campus and community.

Upon disbursement of the grant funds, representatives from each school attended workshops where they shared experiences and looked at ways to increase the awareness of the dangers of high-risk drinking, and to streamline programs to reduce the problem and achieve the greatest results.

MSU was one of a few universities nationwide to receive the federal grant. "Alcohol abuse is the most insidious form of self-destructive behavior because too many young people do not recognize it as their enemy," Dr. Eaglin said. "Now, thanks to this grant, we will attack the problem on a statewide basis."

Additional information on the grant is available by calling Krug at (606) 783-5248.

####

News

University Communications

Pauline Young, Director

Morehead State University

UPO Box 1100

Morehead, KY 40351-1689

(606) 783-2030

Sept. 15, 2000

FOR IMMEDIATE RELEASE

MOREHEAD, Ky.---Eleven of the state's higher education institutions, including Hazard Community College, have been awarded minigrants to participate in the grassroots effort to combat high-risk drinking in college youth.

Dr. G. Edward Hughes, chief executive officer at HCC, is among those leaders in higher education who will be involved in this project. He will be assisted Pamela Banks, career/transfer counselor.

These schools join the eight other institutions as partners in the U.S. Department of Education project, the Kentucky Network to Reduce High-Risk Drinking Among College Students. Morehead State University President Ronald G. Eaglin is the project director for the \$249,000 grant awarded last year.

These 11 schools will develop plans to assess the campus/community environment and to create and/or expand the campus coalition. "We are so fortunate to have each of the college leaders join us in our efforts to combat high-risk drinking in college youth," Dr. Eaglin said in announcing the individual campus minigrants.

The new 2000 partners--their campus leaders and coordinators--include:

Ashland Community College, Dr. Angeline G. Dvorak;

Bellarmine University, Dr. Joseph McGowan; Alice Kimble, director of wellness and health services;

Berea College, Dr. Larry Shinn; Holli Hudson, director of wellness services;

Henderson Community College, Dr. Patrick Lake, Pennae L. Fuchs, assistant professor of nursing, coordinator;

Lindsey Wilson College, William Luckey Jr.; Denise Fudge, vice president of student service; Dean Adams, dean of students;

Maysville Community College, Jim Miller; Tina Baker, public relations coordinator;

Somerset Community College, Dr. Jo Marshall; Jim McFeeters, assistant professor of CIS/IT;

(MORE)

Minigrants conference
2-2-2-2

Transylvania University, Dr. Charles L. Shearer; Michael Covert, assistant dean of students;

West Kentucky Technical College, Dr. Paul McInturff; Dr. David Cooper, admissions counselor.

Awarded mini-grants during the first of the year of the grant were St. Catharine College, Western Kentucky University, Campbellsville University, Murray State University, Eastern Kentucky University, Kentucky State University, University of Kentucky and MSU.

Representatives from these post secondary institutions gathered in January to begin the process of devising plans and sharing strategies.

Each of the partners have been invited to participate in a "Moving to Action: Framework and Strategies for Campus-Based ADD Prevention" conference on the MSU campus Wednesday through Friday, Sept. 20-22, where they will fine tune the plans and outline the procedures that will be used in the coming year. The three-day workshop will be held in the Adron Doran University Center.

Judy Krug, MSU student wellness coordinator and the Kentucky network chair, will facilitate the program. Highlights of the program will include a discussion of how to implement the grant to gain the greatest rewards for the campus and community.

Upon disbursement of the grant funds, representatives from each school attended workshops where they shared experiences and looked at ways to increase the awareness of the dangers of high-risk drinking, and to streamline programs to reduce the problem and achieve the greatest results.

MSU was one of a few universities nationwide to receive the federal grant. "Alcohol abuse is the most insidious form of self-destructive behavior because too many young people do not recognize it as their enemy," Dr. Eaglin said. "Now, thanks to this grant, we will attack the problem on a statewide basis."

Additional information on the grant is available by calling Krug at (606) 783-5248.

####

News

University Communications

Pauline Young, Director

Morehead State University

UPO Box 1100

Morehead, KY 40351-1689

(606) 783-2030

Sept. 15, 2000

FOR IMMEDIATE RELEASE

MOREHEAD, Ky.---Eleven of the state's higher education institutions, including Henderson Community College, have been awarded minigrants to participate in the grassroots effort to combat high-risk drinking in college youth.

Dr. Patrick Lake, president of HCC, is among those leaders in higher education who will be involved in this project. He will be assisted by Pennae L. Fuchs, assistant professor of nursing, coordinator.

These schools join the eight other institutions as partners in the U.S. Department of Education project, the Kentucky Network to Reduce High-Risk Drinking Among College Students. Morehead State University President Ronald G. Eaglin is the project director for the \$249,000 grant awarded last year.

These 11 schools will develop plans to assess the campus/community environment and to create and/or expand the campus coalition. "We are so fortunate to have each of the college leaders join us in our efforts to combat high-risk drinking in college youth," Dr. Eaglin said in announcing the individual campus minigrants.

The new 2000 partners--their campus leaders and coordinators--include:

Ashland Community College, Dr. Angeline G. Dvorak;

Bellarmino University, Dr. Joseph McGowan; Alice Kimble, director of wellness and health services;

Berea College, Dr. Larry Shinn; Holli Hudson, director of wellness services;

Central Kentucky Technical College, Ron W. Baugh; Ann Pennington, counselor;

Hazard Community College, Dr. G. Edward Hughes; Pamela Banks, career/transfer counselor;

Lindsey Wilson College, William Luckey Jr.; Denise Fudge, vice president of student service; Dean Adams, dean of students;

Maysville Community College, Jim Miller; Tina Baker, public relations coordinator;

Somerset Community College, Dr. Jo Marshall; Jim McFeeters, assistant professor of CIS/IT;

(MORE)

Minigrants conference
2-2-2-2

Transylvania University, Dr. Charles L. Shearer; Michael Covert, assistant dean of students;

West Kentucky Technical College, Dr. Paul McInturff; Dr. David Cooper, admissions counselor.

Awarded mini-grants during the first of the year of the grant were St. Catharine College, Western Kentucky University, Campbellsville University, Murray State University, Eastern Kentucky University, Kentucky State University, University of Kentucky and MSU.

Representatives from these post secondary institutions gathered in January to begin the process of devising plans and sharing strategies.

Each of the partners have been invited to participate in a "Moving to Action: Framework and Strategies for Campus-Based ADD Prevention" conference on the MSU campus Wednesday through Friday, Sept. 20-22, where they will fine tune the plans and outline the procedures that will be used in the coming year. The three-day workshop will be held in the Adron Doran University Center.

Judy Krug, MSU student wellness coordinator and the Kentucky network chair, will facilitate the program. Highlights of the program will include a discussion of how to implement the grant to gain the greatest rewards for the campus and community.

Upon disbursement of the grant funds, representatives from each school attended workshops where they shared experiences and looked at ways to increase the awareness of the dangers of high-risk drinking, and to streamline programs to reduce the problem and achieve the greatest results.

MSU was one of a few universities nationwide to receive the federal grant. "Alcohol abuse is the most insidious form of self-destructive behavior because too many young people to not recognize it as their enemy," Dr. Eaglin said. "Now, thanks to this grant, we will attack the problem on a statewide basis."

Additional information on the grant is available by calling Krug at (606) 783-5248.

####

News

University Communications

Pauline Young, Director

Morehead State University

UPO Box 1100

Morehead, KY 40351-1689

(606) 783-2030

Sept. 15, 2000

FOR IMMEDIATE RELEASE

MOREHEAD, Ky.---Eleven of the state's higher education institutions, including Lindsey Wilson College, have been awarded minigrants to participate in the grassroots effort to combat high-risk drinking in college youth.

William Luckey Jr., president of Lindsey Wilson, is among those leaders in higher education who will be involved in this project. He will be assisted by Denise Fudge, vice president of student service, and Dean Adams, dean of students.

These schools join the eight other institutions as partners in the U.S. Department of Education project, the Kentucky Network to Reduce High-Risk Drinking Among College Students. Morehead State University President Ronald G. Eaglin is the project director for the \$249,000 grant awarded last year.

These 11 schools will develop plans to assess the campus/community environment and to create and/or expand the campus coalition. "We are so fortunate to have each of the college leaders join us in our efforts to combat high-risk drinking in college youth," Dr. Eaglin said in announcing the individual campus minigrants.

The new 2000 partners--their campus leaders and coordinators--include:

Ashland Community College, Dr. Angeline G. Dvorak;

Bellarmine University, Dr. Joseph McGowan; Alice Kimble, director of wellness and health services;

Berea College, Dr. Larry Shinn; Holli Hudson, director of wellness services;

Central Kentucky Technical College, Ron W. Baugh; Ann Pennington, counselor;

Hazard Community College, Dr. G. Edward Hughes; Pamela Banks, career/transfer counselor;

Henderson Community College, Dr. Patrick Lake; Pennae L. Fuchs, assistant professor of nursing;

Maysville Community College, Jim Miller; Tina Baker, public relations coordinator;

Somerset Community College, Dr. Jo Marshall; Jim McFeeters, assistant professor of CIS/IT;

(MORE)

Minigrants conference
2-2-2-2

Transylvania University, Dr. Charles L. Shearer; Michael Covert, assistant dean of students;

West Kentucky Technical College, Dr. Paul McInturff; Dr. David Cooper, admissions counselor.

Awarded mini-grants during the first of the year of the grant were St. Catharine College, Western Kentucky University, Campbellsville University, Murray State University, Eastern Kentucky University, Kentucky State University, University of Kentucky and MSU. Representatives from these post secondary institutions gathered in January to begin the process of devising plans and sharing strategies.

Each of the partners have been invited to participate in a "Moving to Action: Framework and Strategies for Campus-Based ADD Prevention" conference on the MSU campus Wednesday through Friday, Sept. 20-22, where they will fine tune the plans and outline the procedures that will be used in the coming year. The three-day workshop will be held in the Adron Doran University Center.

Judy Krug, MSU student wellness coordinator and the Kentucky network chair, will facilitate the program. Highlights of the program will include a discussion of how to implement the grant to gain the greatest rewards for the campus and community.

Upon disbursement of the grant funds, representatives from each school attended workshops where they shared experiences and looked at ways to increase the awareness of the dangers of high-risk drinking, and to streamline programs to reduce the problem and achieve the greatest results.

MSU was one of a few universities nationwide to receive the federal grant. "Alcohol abuse is the most insidious form of self-destructive behavior because too many young people do not recognize it as their enemy," Dr. Eaglin said. "Now, thanks to this grant, we will attack the problem on a statewide basis."

Additional information on the grant is available by calling Krug at (606) 783-5248.

####

News

University Communications

Pauline Young, Director

Morehead State University

UPO Box 1100

Morehead, KY 40351-1689

(606) 783-2030

Sept. 15, 2000

FOR IMMEDIATE RELEASE

MOREHEAD, Ky.---Eleven of the state's higher education institutions, including Maysville Community College, have been awarded minigrants to participate in the grassroots effort to combat high-risk drinking in college youth.

Jim Miller, president of MCC, is among those leaders in higher education who will be involved in this project. He will be assisted by Tina Baker, public relations coordinator.

These schools join the eight other institutions as partners in the U.S. Department of Education project, the Kentucky Network to Reduce High-Risk Drinking Among College Students. Morehead State University President Ronald G. Eaglin is the project director for the \$249,000 grant awarded last year.

These 11 schools will develop plans to assess the campus/community environment and to create and/or expand the campus coalition. "We are so fortunate to have each of the college leaders join us in our efforts to combat high-risk drinking in college youth," Dr. Eaglin said in announcing the individual campus minigrants.

The new 2000 partners---their campus leaders and coordinators---are:

Ashland Community College, Dr. Angeline G. Dvorak;

Bellarmino University, Dr. Joseph McGowan; Alice Kimble, director of wellness and health services;

Berea College, Dr. Larry Shinn; Holli Hudson, director of wellness services;

Central Kentucky Technical College, Ron W. Baugh, Ann Pennington, counselor;

Hazard Community College, Dr. G. Edward Hughes; Pamela Banks, career/transfer counselor;

Henderson Community College, Dr. Patrick Lake, Pennae L. Fuchs, assistant professor of nursing, coordinator;

Lindsey Wilson College, William Luckey Jr.; Denise Fudge, vice president of student service; Dean Adams, dean of students;

Somerset Community College, Dr. Jo Marshall; Jim McFeeters, assistant professor of CIS/IT;

(MORE)

Minigrants conference
2-2-2-2

Transylvania University, Dr. Charles L. Shearer; Michael Covert, assistant dean of students;

West Kentucky Technical College, Dr. Paul McInturff; Dr. David Cooper, admissions counselor.

Awarded mini-grants during the first of the year of the grant were St. Catharine College, Western Kentucky University, Campbellsville University, Murray State University, Eastern Kentucky University, Kentucky State University, University of Kentucky and MSU.

Representatives from these post secondary institutions gathered in January to begin the process of devising plans and sharing strategies.

Each of the partners have been invited to participate in a "Moving to Action: Framework and Strategies for Campus-Based ADD Prevention" conference on the MSU campus Wednesday through Friday, Sept. 20-22, where they will fine tune the plans and outline the procedures that will be used in the coming year. The three-day workshop will be held in the Adron Doran University Center.

Judy Krug, MSU student wellness coordinator and the Kentucky network chair, will facilitate the program. Highlights of the program will include a discussion of how to implement the grant to gain the greatest rewards for the campus and community.

Upon disbursement of the grant funds, representatives from each school attended workshops where they shared experiences and looked at ways to increase the awareness of the dangers of high-risk drinking, and to streamline programs to reduce the problem and achieve the greatest results.

MSU was one of a few universities nationwide to receive the federal grant. "Alcohol abuse is the most insidious form of self-destructive behavior because too many young people to not recognize it as their enemy," Dr. Eaglin said. "Now, thanks to this grant, we will attack the problem on a statewide basis."

Additional information on the grant is available by calling Krug at (606) 783-5248.

####

News

University Communications

Pauline Young, Director

Morehead State University

UPO Box 1100

Morehead, KY 40351-1689

(606) 783-2030

Sept. 15, 2000

FOR IMMEDIATE RELEASE

MOREHEAD, Ky.---Eleven of the state's higher education institutions, including Somerset Community College, have been awarded minigrants to participate in the grassroots effort to combat high-risk drinking in college youth.

Dr. Jo Marshall, president of SCC, is among those leaders in higher education who will be involved in this project. She will be assisted by Jim McFeeters, assistant professor of CIS/IT.

These schools join the eight other institutions as partners in the U.S. Department of Education project, the Kentucky Network to Reduce High-Risk Drinking Among College Students. Morehead State University President Ronald G. Eaglin is the project director for the \$249,000 grant awarded last year.

These 11 schools will develop plans to assess the campus/community environment and to create and/or expand the campus coalition. "We are so fortunate to have each of the college leaders join us in our efforts to combat high-risk drinking in college youth," Dr. Eaglin said in announcing the individual campus minigrants.

The new 2000 partners---their campus leaders and coordinators---are:

Ashland Community College, Dr. Angeline G. Dvorak;

Bellarmine University, Dr. Joseph McGowan; Alice Kimble, director of wellness and health services;

Berea College, Dr. Larry Shinn; Holli Hudson, director of wellness services;

Central Kentucky Technical College, Ron W. Baugh, Ann Pennington, counselor;

Hazard Community College, Dr. G. Edward Hughes; Pamela Banks, career/transfer counselor;

Henderson Community College, Dr. Patrick Lake, Pennae L. Fuchs, assistant professor of nursing, coordinator;

Lindsey Wilson College, William Luckey Jr.; Denise Fudge, vice president of student service; Dean Adams, dean of students;

Maysville Community College, Jim Miller; Tina Baker, public relations coordinator;

(MORE)

Minigrants conference
2-2-2-2

Transylvania University, Dr. Charles L. Shearer; Michael Covert, assistant dean of students;

West Kentucky Technical College, Dr. Paul McInturff; Dr. David Cooper, admissions counselor.

Awarded mini-grants during the first of the year of the grant were St. Catharine College, Western Kentucky University, Campbellsville University, Murray State University, Eastern Kentucky University, Kentucky State University, University of Kentucky and MSU.

Representatives from these post secondary institutions gathered in January to begin the process of devising plans and sharing strategies.

Each of the partners have been invited to participate in a "Moving to Action: Framework and Strategies for Campus-Based ADD Prevention" conference on the MSU campus Wednesday through Friday, Sept. 20-22, where they will fine tune the plans and outline the procedures that will be used in the coming year. The three-day workshop will be held in the Adron Doran University Center.

Judy Krug, MSU student wellness coordinator and the Kentucky network chair, will facilitate the program. Highlights of the program will include a discussion of how to implement the grant to gain the greatest rewards for the campus and community.

Upon disbursement of the grant funds, representatives from each school attended workshops where they shared experiences and looked at ways to increase the awareness of the dangers of high-risk drinking, and to streamline programs to reduce the problem and achieve the greatest results.

MSU was one of a few universities nationwide to receive the federal grant. "Alcohol abuse is the most insidious form of self-destructive behavior because too many young people to not recognize it as their enemy," Dr. Eaglin said. "Now, thanks to this grant, we will attack the problem on a statewide basis."

Additional information on the grant is available by calling Krug at (606) 783-5248.

####

News

University Communications

Pauline Young, Director

Morehead State University

UPO Box 1100

Morehead, KY 40351-1689

(606) 783-2030

Sept. 15, 2000

FOR IMMEDIATE RELEASE

MOREHEAD, Ky.---Eleven of the state's higher education institutions, including West Kentucky Technical College, have been awarded minigrants to participate in the grassroots effort to combat high-risk drinking in college youth.

Dr. Paul McInturff, director of the college, is among those leaders in higher education who will be involved in this project. He will be assisted by Dr. David Cooper, admissions counselor.

These schools join the eight other institutions as partners in the U.S. Department of Education project, the Kentucky Network to Reduce High-Risk Drinking Among College Students. Morehead State University President Ronald G. Eaglin is the project director for the \$249,000 grant awarded last year.

These 11 schools will develop plans to assess the campus/community environment and to create and/or expand the campus coalition. "We are so fortunate to have each of the college leaders join us in our efforts to combat high-risk drinking in college youth," Dr. Eaglin said in announcing the individual campus minigrants.

The new 2000 partners---their campus leaders and coordinators---are:

Ashland Community College, Dr. Angeline G. Dvorak;

Bellarmino University, Dr. Joseph McGowan; Alice Kimble, director of wellness and health services;

Berea College, Dr. Larry Shinn; Holli Hudson, director of wellness services;

Central Kentucky Technical College, Ron W. Baugh, Ann Pennington, counselor;

Hazard Community College, Dr. G. Edward Hughes; Pamela Banks, career/transfer counselor;

Henderson Community College, Dr. Patrick Lake, Pennae L. Fuchs, assistant professor of nursing, coordinator;

Lindsey Wilson College, William Luckey Jr.; Denise Fudge, vice president of student service; Dean Adams, dean of students;

Maysville Community College, Jim Miller; Tina Baker, public relations coordinator;

(MORE)

Minigrants conference
2-2-2-2

Somerset Community College, Dr. Jo Marshall; Jim McFeeters, assistant professor of CIS/IT;

Transylvania University, Dr. Charles L. Shearer; Michael Covert, assistant dean of students;

Awarded mini-grants during the first of the year of the grant were St. Catharine College, Western Kentucky University, Campbellsville University, Murray State University, Eastern Kentucky University, Kentucky State University, University of Kentucky and MSU.

Representatives from these post secondary institutions gathered in January to begin the process of devising plans and sharing strategies.

Each of the partners have been invited to participate in a "Moving to Action: Framework and Strategies for Campus-Based ADD Prevention" conference on the MSU campus Wednesday through Friday, Sept. 20-22, where they will fine tune the plans and outline the procedures that will be used in the coming year. The three-day workshop will be held in the Adron Doran University Center.

Judy Krug, MSU student wellness coordinator and the Kentucky network chair, will facilitate the program. Highlights of the program will include a discussion of how to implement the grant to gain the greatest rewards for the campus and community.

Upon disbursement of the grant funds, representatives from each school attended workshops where they shared experiences and looked at ways to increase the awareness of the dangers of high-risk drinking, and to streamline programs to reduce the problem and achieve the greatest results.

MSU was one of a few universities nationwide to receive the federal grant. "Alcohol abuse is the most insidious form of self-destructive behavior because too many young people do not recognize it as their enemy," Dr. Eaglin said. "Now, thanks to this grant, we will attack the problem on a statewide basis."

Additional information on the grant is available by calling Krug at (606) 783-5248.

####

Photo

University Communications

Pauline Young, Director

Morehead State University

UPO Box 1100

Morehead, KY 40351-1689

(606) 783-2030

MSU CAMPAIGN GETS UNDERWAY

Reducing high-risk drinking has always been an important goal of Morehead State University's President Ronald G. Eaglin, right. After being named project director of a \$249,000 grant from the U.S. Department of Education last year, he continued to push ahead to enforce a unified effort to address the problem. The grant, which was supported by Kentucky's governor and top-level administrators in government and education, was awarded through the Kentucky Network of Colleges and Universities Committed to the Elimination of Drug and Alcohol Abuse.

Recently, he discussed the special poster, designed for this year's social marketing campaign, with Mike Mincey, MSU vice president of student life and the assistant project director. MSU is joining 18 other partners who will institute similar campaigns on their campus.

(MSU photo by Tim Holbrook)

9-15-00

MSU is an affirmative action, equal opportunity educational institution.

*M. News
Trail Blazer
Bath Co.
mt. Sterling*



News

University Communications

Pauline Young, Director

Morehead State University

UPO Box 1100

Morehead, KY 40351-1689

(606) 783-2030

Sept. 15, 2000

FOR IMMEDIATE RELEASE

MOREHEAD, Ky.---The Board of Regents voted unanimously on Friday to extend the contract of Morehead State University President Ronald G. Eaglin by one year, through June 30, 2004.

The Regents also approved MSU's membership in the Pioneer Football League, effective July 1, 2001. By then, the Pioneer League will consist of eight NCAA Division I schools playing non-scholarship football at the I-AA level. MSU will remain in the Ohio Valley Conference for all other sports.

Also, the Regents authorized renaming of MSU's four regional centers. Henceforth, they will be known as MSU Ashland, MSU Jackson, MSU Prestonsburg and MSU West Liberty.

Three Regents were administered the oath of office, including citizen member Jerry Umberger of Ashland, staff member Gene Caudill of Morehead and student member Teresa Johnson of Jackson, Ohio.

Executive Vice President Michael Moore reported that MSU is experiencing an increase in out-of-state students and first-time graduate students and that the average ACT score for new students is up from 19.7 to 20. Final fall enrollment figures have not been compiled.

####

Photo

University Communications

Pauline Young, Director

Morehead State University

UPO Box 1100

Morehead, KY 40351-1689

(606) 783-2030

MSU REGENTS SWORN IN

During the quarterly meeting of Morehead State University's Board of Regents, three regents were sworn in by legal counsel Jon Woodall, left. Taking the oath of office were Gene Caudill of **Morehead**, who is beginning his third term as staff regent; Teresa Johnson, a **Jackson, Ohio**, senior and the Student Government Association president who will serve as the 2000-2001 student regent; and Jerry Umberger, right, of **Ashland**, who was newly-appointed to a six-year term.

(MSU photo by Tim Holbrook)

9-15-00

MSU is an affirmative action equal opportunity educational institution.



Media Advisory

University Communications

Pauline Young, Director

Morehead State University

UPO Box 1100

Morehead, KY 40351-1689

(606) 783-2030

- EVENT:** "Moving to Action: Framework and Strategies for Campus-Based ADD Prevention"
- DATE:** Wednesday through Friday, Sept. 20-22
- TIME:** Conference begins Sept. 20, at 2 p.m.; all-day Thursday and Friday
- SITE:** Adron Doran University Center on the Morehead State University campus

Representatives from 19 post secondary schools will gather to discuss ways to reduce alcohol abuse on the college campus and in the community. All the schools are partners in the U.S. Department of Education project, administered through the Kentucky Network to Reduce High-Risk Drinking Among College Students.

The college presidents of the schools have joined forces in an effort to combat alcohol abuse, a problem that affects students on college campuses nationwide.

The conference is sponsored by a grant from the U.S. Department of Education for the Kentucky Network to Reduce High-Risk Drinking Among College Students. MSU President Ronald G. Eaglin is the project director for the \$249,000 grant awarded last year.

Additional information on the conference is available by calling Judy Krug, MSU student wellness coordinator and chair of the Kentucky network, at (606) 783-5248.

####

9-15-00

News

University Communications

Pauline Young, Director

Morehead State University

UPO Box 1100

Morehead, KY 40351-1689

(606) 783-2030

Sept. 15, 2000

FOR IMMEDIATE RELEASE

MOREHEAD, Ky.---Members of the community may learn about the Family and Medical Leave Act at a workshop on Tuesday, Sept. 26, sponsored by Morehead State University's offices of Human Resources and Continuing Education.

The two-hour session will begin at 9:10 a.m. in the Riggle Room of the Adron Doran University Center on campus. The cost is \$25, which must be received by **Sept. 22** in the Office of Continuing Education, MSU, UPO 3000, Morehead, KY 40351.

The educational seminar will be led by human resources staff members Phyllis Dehart, compensation and benefits manager, and Suzanne Hogge, assistant director of compensation and benefits. Topics to be covered include rights and responsibilities of employees and employers under the law.

MSU's policy regarding the act will be reviewed and a question and answer session will follow.

Because of limited seating, pre-registration is necessary. Additional information is available by calling 783-5480 or 783-2077.

####

rdm

Photo

University Communications

Pauline Young, Director

Morehead State University

UPO Box 1100

Morehead, KY 40351-1689

(606) 783-2030

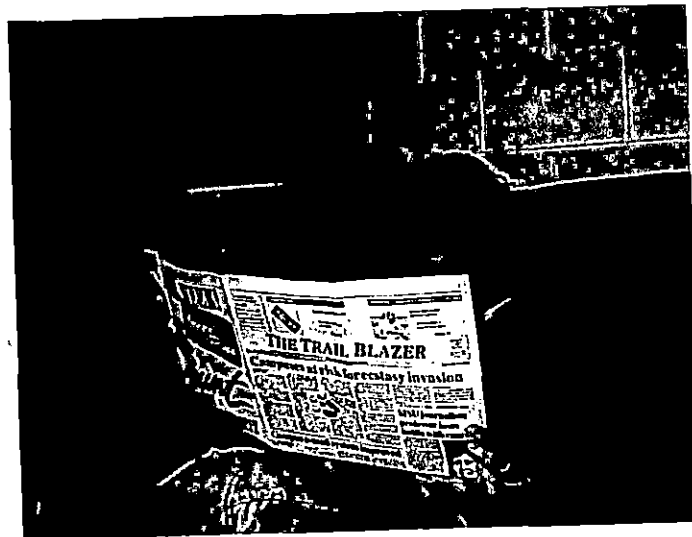
MOREHEAD STATE STUDENTS BEGIN FALL SEMESTER

Destiny Thorpe, **Powell County** sophomore, reads an edition of The Trail Blazer, Morehead State University's student-produced newspaper. The semester for the communications major and her fellow students runs through Friday, Dec. 15, with a fall break Monday-Tuesday, Nov. 6-7, and Wednesday-Friday, Nov. 22-24, for the Thanksgiving Holiday.

(MSU student photo by Kelley Esham)

9-15-00rdm

MSU is an affirmative action equal opportunity educational institution.



Photo

University Communications

Pauline Young, Director

Morehead State University

UPO Box 1100

Morehead, KY 40351-1689

(606) 783-2030

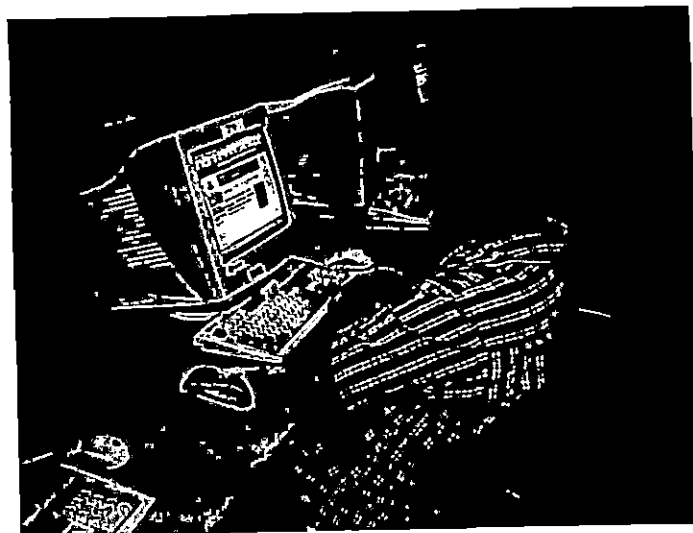
MOREHEAD STATE STUDENTS BEGIN CLASSES

Chris Davis, **Bath County** communications major, enjoys reading news headlines on Morehead State University's Web site during the break between classes. Beginning this semester, students could lease computers from the Office of Information Technology for their personal use. The machines come loaded with a Web browser and Microsoft Office 95.

(MSU student photo by Kelley Esham)

9-15-00rdm

MSU is an affirmative action equal opportunity educational institution.



Photo

University Communications

Pauline Young, Director

Morehead State University

UPO Box 1100

Morehead, KY 40351-1689

(606) 783-2030

MOREHEAD STATE STUDENTS BEGIN CLASSES

Kelly Pierce, a Morehead State University freshman from **Mt. Sterling**, reviews her notes before the next class. Students may enjoy a variety of activities during the fall semester, including Homecoming slated for Thursday-Sunday, Oct. 19-22. The festivities get underway on Thursday evening with a parade through downtown Morehead. Highlights for Saturday pit the Eagle football team against Bowie State University in a match-up that begins at 1:30 p.m. in Jayne Stadium. MSU students are admitted free of charge with a valid I.D. card to many University activities including athletic events, music recitals and plays.

(MSU student photo by Kelley Esham)

9-15-00rdm

MSU is an affirmative action equal opportunity educational institution.



Photo

University Communications

Pauline Young, Director

Morehead State University

UPO Box 1100

Morehead, KY 40351-1689

(606) 783-2030

MOREHEAD STATE STUDENTS BEGIN CLASSES

Mary Ann Howard, left, and Elizabeth Montgomery, **Salyersville** juniors, walk along University Boulevard on their way to class at Morehead State University. The fall semester is in session until Dec. 15. During their time on campus, students may attend a variety of extracurricular activities, from athletic events and intramural sports to music recitals.

(MSU student photo by Kelley Esham)

9-15-00rdm

MSU is an affirmative action equal opportunity educational institution.



Photo

University Communications

Pauline Young, Director

Morehead State University

UPO Box 1100

Morehead, KY 40351-1689

(606) 783-2030

MOREHEAD STATE STUDENTS BEGIN FALL SEMESTER

Dan Gullet, **Greenup** senior, finishes his homework at Morehead State University's Camden-Carroll Library. In his time away from his schoolwork, Gullet may participate in Homecoming 2000 activities, which begin with a parade on Thursday, Oct. 19, and continue through Sunday, Oct. 22. The Eagle football team will take on Bowie State University Saturday, Oct. 21, at 1:30 p.m. in Jayne Stadium. There will be a postgame fish fry, which is free and open to the public, at the Alumni Center. MSU students are admitted free of charge to many University activities including athletic events and plays.

(MSU student photo by Kelley Esham)

9-15-00rdm

MSU is an affirmative action equal opportunity educational institution.



Photo

University Communications

Pauline Young, Director

Morehead State University

LPO Box 1100

Morehead, KY 40351-1689

(606) 783-2030

MOREHEAD STATE STUDENTS BEGIN FALL SEMESTER

Leaving all the hustle and bustle of new students and new classes, Tommy Cains, **Morehead** freshman, formerly of **Bath County**, retreats to a quieter area in Morehead State University's Camden-Carroll Library to study. Cains, like all MSU students, may enjoy time away from classes by participating in a variety of activities, including Homecoming, which will be held Thursday-Saturday, Oct. 19-22. The festivities begin Thursday evening with a parade through downtown Morehead. The Eagle football team will take on Bowie State University on Saturday in a match-up that gets underway at 1:30 p.m. in Jayne Stadium. MSU students are admitted free with a valid I.D. card to all University athletic events.

(MSU student photo by Kelley Esham)

9-15-00rdm

MSU is an affirmative action equal opportunity educational institution.



Photo

University Communications

Pauline Young, Director

Morehead State University

UPO Box 1100

Morehead, KY 40351-1689

(606) 783-2030

MOREHEAD STATE STUDENTS BEGIN FALL SEMESTER

Rosalind Donald, **Louisville** freshman, uses a break between classes to browse at a sidewalk sale in front of Morehead State University's Adron Doran University Center. Students also may use their time away from coursework to participate in various activities on campus including intramural sports, free movie nights and music recitals.

(MSU student photo by Kelley Esham)

9-15-00rdm

MSU is an affirmative action equal opportunity educational institution.



Photo

University Communications

Pauline Young, Director

Morehead State University

UPO Box 1100

Morehead, KY 40351-1689

(606) 783-2030

MOREHEAD STATE SOCCER PLAYER DEFENDS GOAL

Holly Beach, **Milford, Ohio**, sophomore, defended Morehead State University's lead in a recent soccer game. The goalkeeper and her Eagle teammates, who play home games at Mahaney Recreational Complex, have a record thus far of 4-2-1. Soccer games are free and open to the public. The following is the team's home schedule for the remainder of the season: Sept. 22, Indiana University Purdue University Indianapolis, 2 p.m.; Sept. 24, University of Arkansas, Little Rock, 1 p.m.; Oct. 6, Southeast Missouri State University, 4 p.m.; Oct. 8, Murray State University, 1 p.m.; Oct. 11, Marshall University, 7 p.m.; Oct. 14, Tennessee Technological University, 11 a.m.; and Oct. 24, Spalding University, 7 p.m.

(MSU photo by Tim Holbrook)

9-15-00rdm

MSU is an affirmative action equal opportunity educational institution.



Photo

University Communications

Pauline Young, Director

Morehead State University

UPO Box 1100

Morehead, KY 40351-1689

(606) 783-2030

FALL SEMESTER UNDERWAY AT MSU

The fall semester is in full swing at Morehead State University and with autumn just around the corner, students, faculty and staff prepare for the change in the weather. Working to keep the campus beautiful, Morehead State groundskeeper Larry Hignite of **Olive Hill**, trims a tree near the Little Bell Tower.

(MSU photo by Tim Holbrook)

9-15-00ahn

MSU is an affirmative action equal opportunity educational institution.



Photo

University Communications

Pauline Young, Director

Morehead State University

UPO Box 1100

Morehead, KY 40351-1689

(606) 783-2030

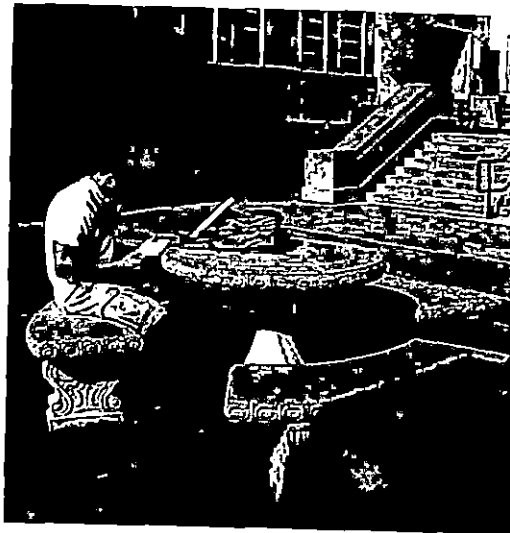
MOREHEAD STATE STUDENTS BEGIN FALL SEMESTER

Chris Cooper, **Georgetown, Ohio**, junior, studies outside the Bert Combs Building on the Morehead State University campus. An exercise science major, Cooper and other students may spend time away from their coursework participating in a variety of activities from intramural sports, free movie nights and music recitals. The fall term closes Dec. 15, with Winter Commencement set for Dec. 16.

(MSU student photo by Kelley Esham)

9-15-00rdm

MSU is an affirmative action equal opportunity educational institution.



Photo

University Communications

Pauline Young, Director

Morehead State University

UPO Box 1100

Morehead, KY 40351-1689

(606) 783-2030

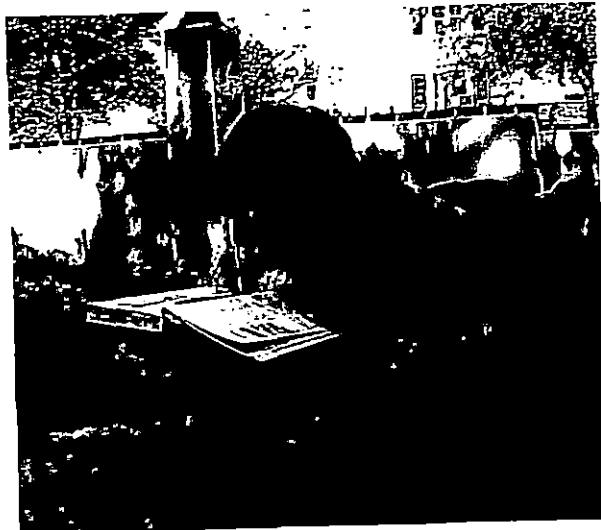
MOREHEAD STATE STUDENTS BEGIN FALL SEMESTER

Paula Diamond, **Nicholasville** freshman, studies near the Eagle Monument on Morehead State University's campus. Students may use their time away from classes and studying to participate in various activities on campus including intramural sports, free movie nights and music recitals.

(MSU student photo by Kelley Esham)

9-15-00rdm

MSU is an affirmative action equal opportunity educational institution.



Photo

University Communications

Pauline Young, Director

Morehead State University

UPO Box 1100

Morehead, KY 40351-1689

(606) 783-2030

MOREHEAD STATE STUDENTS BEGIN FALL SEMESTER

Lauren Grant, **Somerset** freshman, completes her biology homework in one of several computer labs on Morehead State University's campus. Beginning this semester, students may lease computers from the Office of Information Technology for their personal use. The fall term closes Dec. 15 with Winter Commencement set for Dec. 16.

(MSU student photo by Kelley Esham)

9-15-00rdm

MSU is an affirmative action equal opportunity educational institution.



Photo

University Communications

Pauline Young, Director

Morehead State University

UPO Box 1100

Morehead, KY 40351-1689

(606) 783-2030

MOREHEAD STATE STUDENTS BEGIN FALL SEMESTER

James McGlone, **Vanceburg** freshman, walks near the Bert Combs Building on his way to class at Morehead State University. A computer information systems major, McGlone is one of many freshman adapting to life on a college campus this fall. He will have the opportunity to join other MSU students to participate in a variety of activities include intramural sports, athletic events and music recitals.

(MSU student photo by Kelley Esham)

9-15-00rdm

MSU is an affirmative action equal opportunity educational institution.



Sept. 15, 2000

FOR IMMEDIATE RELEASE

MOREHEAD STATE STUDENTS BACK TO SCHOOL: A Picture Story

MOREHEAD, Ky.---The fall semester has begun at Morehead State University. The students were greeted with new options this year, which included the opportunity to purchase textbooks and supplies online at www.morehead-st.edu/units/bookstore. In addition, students may perform a variety of administrative tasks online, from course scheduling to receiving grade reports, to paying fees, all from their student Web account.

A variety of campus activities will be held this semester, including Homecoming, Oct. 19-22. The festivities will begin with a parade through downtown Morehead on Thursday, Oct. 19. The Eagle football team will play Bowie State University on Saturday, Oct. 21, in a match-up that begins at 1:30 p.m. in Jayne Stadium. MSU students are admitted free of charge with a valid I.D. card to all University athletic events. A fish fry at the Alumni Center will follow the Homecoming game.

Cutlines:

1---Dan Gullet, **Greenup** senior, completes his homework at MSU's Camden-Carroll Library. With the fall semester in full swing, this elementary education major wants to stay on top of his studies.

2---Mary Ann Howard, left, and Elizabeth Montgomery, **Salyersville** juniors, walk along University Boulevard near the Adron Doran University Center on their way to class.

3---Kelly Pierce, **Mt. Sterling** freshman, looks over her geography notes before the start of class in Rader Hall.

4---Leaving all the hustle and bustle of new students and classes, Tommy Cains, **Morehead** freshman, retreats to a quieter area in the library to study for an upcoming assignment.

(MSU student photos by Kelley Esham)

5---Working to keep the campus beautiful, Morehead State groundskeeper Larry Hignite of **Olive Hill**, trims a tree.

(MSU photo by Tim Holbrook)

#####



3



5



4



Photo

University Communications

Pauline Young, Director

Morehead State University

UPO Box 1100

Morehead, KY 40351-1689

(606) 783-2030

STROKE 9 TO PERFORM AT MOREHEAD STATE

Stroke 9, along with ninedays, will take the stage Thursday, Oct. 12, at 8 p.m. at Morehead State University's Academic-Athletic Center for a Student Government Association-sponsored concert. The band, known for its song "Little Black Backpack," include, from left, John McDermott, Greg Gueldner, Luke Esterkyn and Eric Stock. Tickets, at \$15 per person, are on sale now at MSU's Office of Student Activities, Martin's Department Store, Gold Emporium and Main Street Music in Morehead; Back's Auto Auction in Mt. Sterling; MSU's Ashland Center; Ken's New Market in Maysville; Jams Music Exchange in Winchester; Martin's Department Store in Jackson; James Family Outfitters in Grayson; MSU's Big Sandy Center in Prestonsburg; and MSU's Licking Valley Center in West Liberty. Additional information is available by calling (606) 783-2071.

####

9-15-00rdm

MSU is an affirmative action equal opportunity educational institution.



Tips

University Communications

Pauline Young, Director

Morehead State University

UPO Box 1100

Morehead, KY 40351-1689

(606) 783-2030

HIGHLIGHTS AT MOREHEAD STATE UNIVERSITY

(Sept. 24-30)

Sunday, Sept. 24

Eagle Soccer: MSU vs. University of Arkansas at Little Rock, Mahaney Recreational Complex, 1 p.m., free. Additional information: (606) 783-2589.

Monday, Sept. 25

Future Business Leaders of America Fall Conference, campus, all day. Additional information: (606) 783-5393.

Tuesday, Sept. 26

Faculty Showcase Recital, Duncan Recital Hall, Baird Music Hall, 8 p.m., contributions accepted at the door. Additional information: (606) 783-2473.

Friday, Sept. 29

Eagle Volleyball: MSU vs. Murray State University, Wetherby Gymnasium, 7 p.m., free. Additional information: (606) 783-2122.

Saturday, Sept. 30

Blue and Gold Festival of Marching Bands, Jayne Stadium, all day. Additional information: (606) 783-2473.

Men's Eagle Fall Classic, through Oct. 1, Sadler Tennis Courts, all day, free. Additional information: (606) 783-5408.

Eagle Volleyball: MSU vs. University of Tennessee at Martin, Wetherby Gymnasium, noon, free. Additional information: (606) 783-2122.

#####

9-18-00rdm

News

University Communications

Pauline Young, Director

Morehead State University

UPO Box 1100

Morehead, KY 40351-1689

(606) 783-2030

Sept. 18, 2000

FOR IMMEDIATE RELEASE

MOREHEAD, Ky.---Workshops in learning to use the information super highway and tips for beauticians are among the educational opportunities being offered by Morehead State University's Small Business Development Center in the coming weeks.

The workshops to be offered on the MSU campus include:

"Introduction to the World Wide Web," Thursday, Sept. 21, from 5 to 7 p.m. in 110 Ginger Hall. The cost is \$25.

"IRS Tips for Beauticians," Monday, Sept. 25, from 9:30 a.m. until noon in 210 Combs Building. There is no registration fee.

"Introduction to Excel 2000," three consecutive Mondays, Sept. 25, Oct. 2 and 9, from 5 to 7 p.m. in 110 Ginger Hall. The cost is \$50.

Another seminar, "Financing Your Business," will be offered at the Fleming County Hospital's conference room on Tuesday, Sept. 26, from 6:30 to 9 p.m. The cost is \$5.

Because of limited seating, pre-registration is necessary for these workshops which are co-sponsored by the Flemingsburg-Fleming County Chamber of Commerce and the MSU's Office of Continuing Education and SBDC.

Any training programs, sponsored by the MSU SBDC, are available to all individuals without regard to race, color, sex, creed or national origin. Special arrangements for the disabled will be made if requested in advance.

Registration and additional information are available by calling the Flemingsburg-Fleming County Chamber of Commerce at (606) 845-1223; Morehead State's SBDC at (606) 783-2895; or the Office of Continuing Education at (606) 783-2785.

####

js

News

University Communications

Pauline Young, Director

Morehead State University

UPO Box 1100

Morehead, KY 40351-1689

(606) 783-2030

Sept. 22, 2000

FOR IMMEDIATE RELEASE

MOREHEAD, Ky.---Morehead State University has announced that Kristy Nelson of **Louisa** is among the students who received Alumni and Leadership awards for the fall semester.

Nelson, the daughter of Gary and Nikki Nelson, is a graduate of Lawrence County High School. The class secretary all four years of high school and the 1999 homecoming queen, she was a youth cheerleading coach and a member of Pep and 4-H clubs.

To be eligible for the Alumni Award, applicants must be admitted to MSU as an entering freshman; have exhibited strong leadership and achievement capabilities through school and community activities; have a minimum ACT composite of 18, and have a 2.50 grade point average (on a 4.00 scale) based on seven semesters of work.

To be eligible for the Leadership Award, applicants must be admitted to MSU as an entering freshman; have exhibited strong leadership and achievement capabilities through school and community activities; have a minimum ACT composite of 18, and have a 2.50 grade point average (on a 4.00 scale) based on seven semesters of work.

Applications and information on scholarships and grant programs at MSU are available from the Office of Admissions at (800) 585-6781.

####

rdm

News

University Communications

Pauline Young, Director

Morehead State University

UPO Box 1100

Morehead, KY 40351-1689

(606) 783-2030

Sept. 22, 2000

FOR IMMEDIATE RELEASE

MOREHEAD, Ky.---Morehead State University's Kentucky Folk Art Center is now accepting nominations for its 2001 Appalachian Treasure Award, which will be given during the Appalachian Celebration slated for the last full week in June.

The treasure award, presented during the opening reception of the celebration, recognizes individuals who have demonstrated unusual talents and who possess a dedication to promoting and preserving the cultural heritage of Appalachia.

To be eligible for the award, candidates must be current or former residents of the Appalachian region; have produced quality work and gained renown in some area of arts, crafts, music or literature representative of Appalachia; have demonstrated a willingness to share his or her talents with others; and be cooperative and humanitarian in spirit.

The nomination must be submitted by Wednesday, Nov. 15, to Georgia Sammons Grigsby, marketing coordinator, KFAC, 102 W. First St., Morehead, KY 40351. Additional information is available by calling Grigsby at (606) 783-2204, or by e-mail to g.sammons@morehead-st.edu.

Past recipients of the award include James Still, 1988; Jean Ritchie, 1989; Loyal Jones, 1990; Gurney Norman, 1991; Lyndall "Granny" Toothman, 1992; Homer Ledford, 1993; Minnie Adkins, 1994; Albert Stewart, 1995; C. Roger Lewis, 1996; J. P. Fraley, 1997; Ronald and Jessie Cooper, 1998; Billy C. Clark, 1999; and Tom T. Hall, 2000.

MSU's Appalachian Celebration, which will be held June 24-30 next year, includes a variety of activities, from demonstrations and workshops to daily noon concerts and a crafts market.

####

rdm

News

University Communications

Pauline Young, Director

Morehead State University

UPO Box 1100

Morehead, KY 40351-1689

(606) 783-2030

Sept. 22, 2000

FOR IMMEDIATE RELEASE

MOREHEAD, Ky.---Morehead State University's Staff Congress has elected officers for the 2000-2001 academic year.

The group's chair is Madonna B. Weathers, director of student development. An MSU employee since 1972, she has had various jobs at the University including associate director of student housing and director of resident education.

The Louisville native holds a bachelor's degree in education and master's degrees in education and adult and higher education from Morehead State. She was the co-chair of the Campus Giving Campaign 1999 and will serve in that capacity again this year.

She is a member of the National Association of Student Personnel Administrators, Southern Association for College Student Affairs, American College Health Association, Mid-America College Health Association and Kentucky College Health Association.

Married to James L. Weathers, she has two children, Sarah and Guy Huffman, both of whom are students at MSU. She is a member of Morehead Women's Club and Morehead First United Methodist Church, and is on the board of the Rowan County chapter of the American Red Cross and Peoples Bank.

Pamela Moore, secretary specialist in the educational service unit, was elected vice chair. A member of the University's employee and benefits committee, she has worked at MSU since 1985.

A past team captain for the American Cancer Society's Relay for Life, she is pursuing a bachelor's degree in computer information systems at the University. Originally from Michigan, she has lived in Rowan County for 21 years and is married to Murlyn Moore, a Morehead native.

In her time away from campus, she reads, raises horses and German shepherds and participates in drag races.

Dallas Sammons, associate director of housing, is the secretary of Staff Congress. A Prestonsburg native, she has worked at the University since 1979 when she was a graduate assistant in Waterfield Hall.

(MORE)

Staff Congress

2-2-2-2

She holds Bachelor of Music Education and Master of Arts in Education degrees from Morehead State.

Sammons is a member of Sigma Alpha Iota, a professional music fraternity for women; Phi Delta Kappa, an education honors fraternity; Association of College and University Housing Officers-International; South Eastern Association of Housing Officers; Kentucky Association of Housing Officers; and National Association of Student Personnel Administrators.

A frequent blood donor with the Central Kentucky Blood Center, she serves as the music and choir director at Elliottville Baptist Church.

MSU's Staff Congress, established in 1987, was created to form a stronger bond within the staff, and to promote cooperation among the administration, faculty, students.

####

rdm

Photo

University Communications

Pauline Young, Director

Morehead State University

UPO Box 1100

Morehead, KY 40351-1689

(606) 783-2030

MOREHEAD STATE STAFF CONGRESS ELECTS LEADERS

Morehead State University's Staff Congress has elected officers for the 2000-2001 academic year. The officeholders and their positions are, from left, Pamela Moore, secretary specialist in the educational service unit, as vice chair; Madonna B. Weathers, director of student development, as chair; and Dallas Sammons, associate director of housing, as secretary. MSU's Staff Congress, established in 1987, was created to form a stronger bond within the staff, and to promote cooperation among the administration, faculty, and students.

(MSU photo by Tim Holbrook)

9-22-00rdm

MSU is an affirmative action equal opportunity educational institution.



News

University Communications

Pauline Young, Director

Morehead State University

UPO Box 1100

Morehead, KY 40351-1689

(606) 783-2030

Sept. 22, 2000

FOR IMMEDIATE RELEASE

FLEMINGSBURG, Ky.---A marketing workshop will be offered by Morehead State University's Small Business Development Center on Tuesday, Oct. 3, from 6:30 to 9 p.m.

The seminar, held at the Fleming County Hospital conference room will provide information for participants on how to successfully market their small business and generate high returns by developing a marketing plan.

Topics will include Pricing strategies, Business location and promotion, Advertising media, how to identify your target market, and how to address your competition.

The session is co-sponsored by the Community Trust Bank, Firstar Bank, People's Bank, and the Flemingsburg-Fleming County Chamber of Commerce.

Any training programs sponsored by the MSU SBDC, are available to all individuals without regard to race, color, sex, creed or national origin. Special arrangements for the disabled will be made if requested in advance.

The cost to attend is \$5. Because of limited seating, pre-registration is necessary. Registration and additional information are available by calling the Flemingsburg- Fleming County Chamber of Commerce at (606) 845-1223; Morehead State's SBDC at (606) 783-2895; or the Office of Continuing Education at (606) 783-2785.

####

js

News

University Communications

Pauline Young, Director

Morehead State University

UPO Box 1100

Morehead, KY 40351-1689

(606) 783-2030

Sept. 22, 2000

FOR IMMEDIATE RELEASE

FLEMINGSBURG, Ky.---A “ Financing Your Business” workshop will be offered by Morehead State University’s Small Business Development Center on Tuesday, Sept. 26, from 6:30 to 9 p.m.

Designed for those who are thinking about expanding their business or starting a new one, the workshop will be held at the Fleming County Hospital conference room. The seminar will address the basics of small business lending, understanding business plans and financial statements, and sources for capital. Other topics will include the five C’s of credit and SBA loan programs.

The session is co-sponsored by the Community Trust Bank, Firstar Bank, Peoples Bank, and the Flemingsburg-Fleming County Chamber of Commerce.

Any training programs, sponsored by the MSU SBDC, are available to all individuals without regard to race, color, sex, creed or national origin. Special arrangements for the disabled will be made if requested in advance.

The cost to attend is \$5. Because of limited seating, pre-registration is necessary. Registration and additional information are available by calling the Flemingsburg-Fleming County Chamber of Commerce at (606) 845-1223; Morehead State’s SBDC at (606) 783-2895; or the Office of Continuing Education at (606) 783-2785.

####

js

News

University Communications

Pauline Young, Director

Morehead State University

UPO Box 1100

Morehead, KY 40351-1689

(606) 783-2030

Sept. 22, 2000

FOR IMMEDIATE RELEASE

MOREHEAD, Ky.---Morehead State University has announced that Kristy Nelson of **Louisa** is among the students who received Alumni and Leadership awards for the fall semester.

Nelson, the daughter of Gary and Nikki Nelson, is a graduate of Lawrence County High School. The class secretary all four years of high school and the 1999 homecoming queen, she was a youth cheerleading coach and a member of Pep and 4-H clubs.

To be eligible for the Alumni Award, applicants must be admitted to MSU as an entering freshman; have exhibited strong leadership and achievement capabilities through school and community activities; have a minimum ACT composite of 18, and have a 2.50 grade point average (on a 4.00 scale) based on seven semesters of work.

To be eligible for the Leadership Award, applicants must be admitted to MSU as an entering freshman; have exhibited strong leadership and achievement capabilities through school and community activities; have a minimum ACT composite of 18, and have a 2.50 grade point average (on a 4.00 scale) based on seven semesters of work.

Applications and information on scholarships and grant programs at MSU are available from the Office of Admissions at (800) 585-6781.

#####

rdm

News

University Communications

Pauline Young, Director

Morehead State University

UPO Box 1100

Morehead, KY 40351-1689

(606) 783-2030

Sept. 25, 2000

FOR IMMEDIATE RELEASE

MOREHEAD, Ky.---The Upward Bound program at Morehead State University is recruiting freshmen and sophomore students from **Bath County High School** for the 2000-2001 school year.

Upward Bound is an academic program for high school students who are interested in furthering their education beyond high school. The program provides a variety of services designed to ensure that students are successful in their high school coursework and that they will then enter an educational program (college or university) after high school.

Among the services offered are academic advising and/or tutoring; school visits; monthly newsletters; visits to the University campus; social/cultural trips; and a six-week residential summer program at MSU.

To be eligible for the program, students must have a high school GPA of 2.0 or higher, be interested in exploring their education beyond high school, and be willing to participate in all Upward Bound activities, including the summer residential component.

Students also must meet the income or first generation eligibility criteria. Income eligibility is based on taxable income and number of family members; first generation implies that neither of the student's parents have completed a four-year college degree.

Interested students may pick up an application at their high school counselor's office or contact MSU's Upward Bound office at 1-800-5UPWARD.

####

js

News

University Communications

Pauline Young, Director

Morehead State University

UPO Box 1100

Morehead, KY 40351-1689

(606) 783-2030

Sept. 25, 2000

FOR IMMEDIATE RELEASE

MOREHEAD, Ky.---The Upward Bound program at Morehead State University is recruiting freshmen and sophomore students from **Boyd County High School** for the 2000-2001 school year.

Upward Bound is an academic program for high school students who are interested in furthering their education beyond high school. The program provides a variety of services designed to ensure that students are successful in their high school coursework and that they will then enter an educational program (college or university) after high school.

Among the services offered are academic advising and/or tutoring; school visits; monthly newsletters; visits to the University campus; social/cultural trips; and a six-week residential summer program at MSU.

To be eligible for the program, students must have a high school GPA of 2.0 or higher, be interested in exploring their education beyond high school, and be willing to participate in all Upward Bound activities, including the summer residential component.

Students also must meet the income or first generation eligibility criteria. Income eligibility is based on taxable income and number of family members; first generation implies that neither of the student's parents have completed a four-year college degree.

Interested students may pick up an application at their high school counselor's office or contact MSU's Upward Bound office at 1-800-5UPWARD.

####

js

News

University Communications

Pauline Young, Director

Morehead State University

UPO Box 1100

Morehead, KY 40351-1689

(606) 783-2030

Sept. 25, 2000

FOR IMMEDIATE RELEASE

MOREHEAD, Ky.---The Upward Bound program at Morehead State University is recruiting freshmen and sophomore students from **East Carter High School** for the 2000-2001 school year.

Upward Bound is an academic program for high school students who are interested in furthering their education beyond high school. The program provides a variety of services designed to ensure that students are successful in their high school coursework and that they will then enter an educational program (college or university) after high school.

Among the services offered are academic advising and/or tutoring; school visits; monthly newsletters; visits to the University campus; social/cultural trips; and a six-week residential summer program at MSU.

To be eligible for the program, students must have a high school GPA of 2.0 or higher, be interested in exploring their education beyond high school, and be willing to participate in all Upward Bound activities, including the summer residential component.

Students also must meet the income or first generation eligibility criteria. Income eligibility is based on taxable income and number of family members; first generation implies that neither of the student's parents have completed a four-year college degree.

Interested students may pick up an application at their high school counselor's office or contact MSU's Upward Bound office at 1-800-5UPWARD.

####

js

News

University Communications

Pauline Young, Director

Morehead State University

UPO Box 1100

Morehead, KY 40351-1689

(606) 783-2030

Sept. 25, 2000

FOR IMMEDIATE RELEASE

MOREHEAD, Ky.---The Upward Bound program at Morehead State University is recruiting freshmen and sophomore students from **Elliott County High School** for the 2000-2001 school year.

Upward Bound is an academic program for high school students who are interested in furthering their education beyond high school. The program provides a variety of services designed to ensure that students are successful in their high school coursework and that they will then enter an educational program (college or university) after high school.

Among the services offered are academic advising and/or tutoring; school visits; monthly newsletters; visits to the University campus; social/cultural trips; and a six-week residential summer program at MSU.

To be eligible for the program, students must have a high school GPA of 2.0 or higher, be interested in exploring their education beyond high school, and be willing to participate in all Upward Bound activities, including the summer residential component.

Students also must meet the income or first generation eligibility criteria. Income eligibility is based on taxable income and number of family members; first generation implies that neither of the student's parents have completed a four-year college degree.

Interested students may pick up an application at their high school counselor's office or contact MSU's Upward Bound office at 1-800-5UPWARD.

#####

js

News

University Communications

Pauline Young, Director

Morehead State University

UPO Box 1100

Morehead, KY 40351-1689

(606) 783-2030

Sept. 25, 2000

FOR IMMEDIATE RELEASE

MOREHEAD, Ky.---The Upward Bound program at Morehead State University is recruiting freshmen and sophomore students from **Fleming County High School** for the 2000-2001 school year.

Upward Bound is an academic program for high school students who are interested in furthering their education beyond high school. The program provides a variety of services designed to ensure that students are successful in their high school coursework and that they will then enter an educational program (college or university) after high school.

Among the services offered are academic advising and/or tutoring; school visits; monthly newsletters; visits to the University campus; social/cultural trips; and a six-week residential summer program at MSU.

To be eligible for the program, students must have a high school GPA of 2.0 or higher, be interested in exploring their education beyond high school, and be willing to participate in all Upward Bound activities, including the summer residential component.

Students also must meet the income or first generation eligibility criteria. Income eligibility is based on taxable income and number of family members; first generation implies that neither of the student's parents have completed a four-year college degree.

Interested students may pick up an application at their high school counselor's office or contact MSU's Upward Bound office at 1-800-5UPWARD.

####

js

News

University Communications

Pauline Young, Director

Morehead State University

UPO Box 1100

Morehead, KY 40351-1689

(606) 783-2030

Sept. 25, 2000

FOR IMMEDIATE RELEASE

MOREHEAD, Ky.---The Upward Bound program at Morehead State University is recruiting freshmen and sophomore students from **Greenup County High School** for the 2000-2001 school year.

Upward Bound is an academic program for high school students who are interested in furthering their education beyond high school. The program provides a variety of services designed to ensure that students are successful in their high school coursework and that they will then enter an educational program (college or university) after high school.

Among the services offered are academic advising and/or tutoring; school visits; monthly newsletters; visits to the University campus; social/cultural trips; and a six-week residential summer program at MSU.

To be eligible for the program, students must have a high school GPA of 2.0 or higher, be interested in exploring their education beyond high school, and be willing to participate in all Upward Bound activities, including the summer residential component.

Students also must meet the income or first generation eligibility criteria. Income eligibility is based on taxable income and number of family members; first generation implies that neither of the student's parents have completed a four-year college degree.

Interested students may pick up an application at their high school counselor's office or contact MSU's Upward Bound office at 1-800-5UPWARD.

#####

js

News

University Communications

Pauline Young, Director

Morehead State University

UPO Box 1100

Morehead, KY 40351-1689

(606) 783-2030

Sept. 25, 2000

FOR IMMEDIATE RELEASE

MOREHEAD, Ky.---The Upward Bound program at Morehead State University is recruiting freshmen and sophomore students from **Johnson Central High School** for the 2000-2001 school year.

Upward Bound is an academic program for high school students who are interested in furthering their education beyond high school. The program provides a variety of services designed to ensure that students are successful in their high school coursework and that they will then enter an educational program (college or university) after high school.

Among the services offered are academic advising and/or tutoring; school visits; monthly newsletters; visits to the University campus; social/cultural trips; and a six-week residential summer program at MSU.

To be eligible for the program, students must have a high school GPA of 2.0 or higher, be interested in exploring their education beyond high school, and be willing to participate in all Upward Bound activities, including the summer residential component.

Students also must meet the income or first generation eligibility criteria. Income eligibility is based on taxable income and number of family members; first generation implies that neither of the student's parents have completed a four-year college degree.

Interested students may pick up an application at their high school counselor's office or contact MSU's Upward Bound office at 1-800-5UPWARD.

####

js

News

University Communications

Pauline Young, Director

Morehead State University

UPO Box 1100

Morehead, KY 40351-1689

(606) 783-2030

Sept. 25, 2000

FOR IMMEDIATE RELEASE

MOREHEAD, Ky.---The Upward Bound program at Morehead State University is recruiting freshmen and sophomore students from **Lewis County High School** for the 2000-2001 school year.

Upward Bound is an academic program for high school students who are interested in furthering their education beyond high school. The program provides a variety of services designed to ensure that students are successful in their high school coursework and that they will then enter an educational program (college or university) after high school.

Among the services offered are academic advising and/or tutoring; school visits; monthly newsletters; visits to the University campus; social/cultural trips; and a six-week residential summer program at MSU.

To be eligible for the program, students must have a high school GPA of 2.0 or higher, be interested in exploring their education beyond high school, and be willing to participate in all Upward Bound activities, including the summer residential component.

Students also must meet the income or first generation eligibility criteria. Income eligibility is based on taxable income and number of family members; first generation implies that neither of the student's parents have completed a four-year college degree.

Interested students may pick up an application at their high school counselor's office or contact MSU's Upward Bound office at 1-800-5UPWARD.

####

js

News

University Communications

Pauline Young, Director

Morehead State University

UPO Box 1100

Morehead, KY 40351-1689

(606) 783-2030

Sept. 25, 2000

FOR IMMEDIATE RELEASE

MOREHEAD, Ky.---The Upward Bound program at Morehead State University is recruiting freshmen and sophomore students from **Magoffin County High School** for the 2000-2001 school year.

Upward Bound is an academic program for high school students who are interested in furthering their education beyond high school. The program provides a variety of services designed to ensure that students are successful in their high school coursework and that they will then enter an educational program (college or university) after high school.

Among the services offered are academic advising and/or tutoring; school visits; monthly newsletters; visits to the University campus; social/cultural trips; and a six-week residential summer program at MSU.

To be eligible for the program, students must have a high school GPA of 2.0 or higher, be interested in exploring their education beyond high school, and be willing to participate in all Upward Bound activities, including the summer residential component.

Students also must meet the income or first generation eligibility criteria. Income eligibility is based on taxable income and number of family members; first generation implies that neither of the student's parents have completed a four-year college degree.

Interested students may pick up an application at their high school counselor's office or contact MSU's Upward Bound office at 1-800-5UPWARD.

####

js

News

University Communications

Pauline Young, Director

Morehead State University

UPO Box 1100

Morehead, KY 40351-1689

(606) 783-2030

Sept. 25, 2000

FOR IMMEDIATE RELEASE

MOREHEAD, Ky.---The Upward Bound program at Morehead State University is recruiting freshmen and sophomore students from **Mason County High School** for the 2000-2001 school year.

Upward Bound is an academic program for high school students who are interested in furthering their education beyond high school. The program provides a variety of services designed to ensure that students are successful in their high school coursework and that they will then enter an educational program (college or university) after high school.

Among the services offered are academic advising and/or tutoring; school visits; monthly newsletters; visits to the University campus; social/cultural trips; and a six-week residential summer program at MSU.

To be eligible for the program, students must have a high school GPA of 2.0 or higher, be interested in exploring their education beyond high school, and be willing to participate in all Upward Bound activities, including the summer residential component.

Students also must meet the income or first generation eligibility criteria. Income eligibility is based on taxable income and number of family members; first generation implies that neither of the student's parents have completed a four-year college degree.

Interested students may pick up an application at their high school counselor's office or contact MSU's Upward Bound office at 1-800-5UPWARD.

#####

js

News

University Communications

Pauline Young, Director

Morehead State University

UPO Box 1100

Morehead, KY 40351-1689

(606) 783-2030

Sept. 25, 2000

FOR IMMEDIATE RELEASE

MOREHEAD, Ky.---The Upward Bound program at Morehead State University is recruiting freshmen and sophomore students from **Menifee County High School** for the 2000-2001 school year.

Upward Bound is an academic program for high school students who are interested in furthering their education beyond high school. The program provides a variety of services designed to ensure that students are successful in their high school coursework and that they will then enter an educational program (college or university) after high school.

Among the services offered are academic advising and/or tutoring; school visits; monthly newsletters; visits to the University campus; social/cultural trips; and a six-week residential summer program at MSU.

To be eligible for the program, students must have a high school GPA of 2.0 or higher, be interested in exploring their education beyond high school, and be willing to participate in all Upward Bound activities, including the summer residential component.

Students also must meet the income or first generation eligibility criteria. Income eligibility is based on taxable income and number of family members; first generation implies that neither of the student's parents have completed a four-year college degree.

Interested students may pick up an application at their high school counselor's office or contact MSU's Upward Bound office at 1-800-5UPWARD.

####

js

News

University Communications

Pauline Young, Director

Morehead State University

UPO Box 1100

Morehead, KY 40351-1689

(606) 783-2030

Sept. 25, 2000

FOR IMMEDIATE RELEASE

MOREHEAD, Ky.---The Upward Bound program at Morehead State University is recruiting freshmen and sophomore students from **Montgomery County High School** for the 2000-2001 school year.

Upward Bound is an academic program for high school students who are interested in furthering their education beyond high school. The program provides a variety of services designed to ensure that students are successful in their high school coursework and that they will then enter an educational program (college or university) after high school.

Among the services offered are academic advising and/or tutoring; school visits; monthly newsletters; visits to the University campus; social/cultural trips; and a six-week residential summer program at MSU.

To be eligible for the program, students must have a high school GPA of 2.0 or higher, be interested in exploring their education beyond high school, and be willing to participate in all Upward Bound activities, including the summer residential component.

Students also must meet the income or first generation eligibility criteria. Income eligibility is based on taxable income and number of family members; first generation implies that neither of the student's parents have completed a four-year college degree.

Interested students may pick up an application at their high school counselor's office or contact MSU's Upward Bound office at 1-800-5UPWARD.

####

js

News

University Communications

Pauline Young, Director

Morehead State University

UPO Box 1100

Morehead, KY 40351-1689

(606) 783-2030

Sept. 25, 2000

FOR IMMEDIATE RELEASE

MOREHEAD, Ky.---The Upward Bound program at Morehead State University is recruiting freshmen and sophomore students from **Morgan County High School** for the 2000-2001 school year.

Upward Bound is an academic program for high school students who are interested in furthering their education beyond high school. The program provides a variety of services designed to ensure that students are successful in their high school coursework and that they will then enter an educational program (college or university) after high school.

Among the services offered are academic advising and/or tutoring; school visits; monthly newsletters; visits to the University campus; social/cultural trips; and a six-week residential summer program at MSU.

To be eligible for the program, students must have a high school GPA of 2.0 or higher, be interested in exploring their education beyond high school, and be willing to participate in all Upward Bound activities, including the summer residential component.

Students also must meet the income or first generation eligibility criteria. Income eligibility is based on taxable income and number of family members; first generation implies that neither of the student's parents have completed a four-year college degree.

Interested students may pick up an application at their high school counselor's office or contact MSU's Upward Bound office at 1-800-5UPWARD.

#####

js

News

University Communications

Pauline Young, Director

Morehead State University

UPO Box 1100

Morehead, KY 40351-1689

(606) 783-2030

Sept. 25, 2000

FOR IMMEDIATE RELEASE

MOREHEAD, Ky.---The Upward Bound program at Morehead State University is recruiting freshmen and sophomore students from **Rowan County High School** for the 2000-2001 school year.

Upward Bound is an academic program for high school students who are interested in furthering their education beyond high school. The program provides a variety of services designed to ensure that students are successful in their high school coursework and that they will then enter an educational program (college or university) after high school.

Among the services offered are academic advising and/or tutoring; school visits; monthly newsletters; visits to the University campus; social/cultural trips; and a six-week residential summer program at MSU.

To be eligible for the program, students must have a high school GPA of 2.0 or higher, be interested in exploring their education beyond high school, and be willing to participate in all Upward Bound activities, including the summer residential component.

Students also must meet the income or first generation eligibility criteria. Income eligibility is based on taxable income and number of family members; first generation implies that neither of the student's parents have completed a four-year college degree.

Interested students may pick up an application at their high school counselor's office or contact MSU's Upward Bound office at 1-800-5UPWARD.

#####

js

News

University Communications

Pauline Young, Director

Morehead State University

UPO Box 1100

Morehead, KY 40351-1689

(606) 783-2030

Sept. 25, 2000

FOR IMMEDIATE RELEASE

MOREHEAD, Ky.---The Upward Bound program at Morehead State University is recruiting freshmen and sophomore students from **West Carter High School** for the 2000-2001 school year.

Upward Bound is an academic program for high school students who are interested in furthering their education beyond high school. The program provides a variety of services designed to ensure that students are successful in their high school coursework and that they will then enter an educational program (college or university) after high school.

Among the services offered are academic advising and/or tutoring; school visits; monthly newsletters; visits to the University campus; social/cultural trips; and a six-week residential summer program at MSU.

To be eligible for the program, students must have a high school GPA of 2.0 or higher, be interested in exploring their education beyond high school, and be willing to participate in all Upward Bound activities, including the summer residential component.

Students also must meet the income or first generation eligibility criteria. Income eligibility is based on taxable income and number of family members; first generation implies that neither of the student's parents have completed a four-year college degree.

Interested students may pick up an application at their high school counselor's office or contact MSU's Upward Bound office at 1-800-5UPWARD.

####

js

Tips

University Communications

Pauline Young, Director

Morehead State University

UPO Box 1100

Morehead, KY 40351-1689

(606) 783-2030

HIGHLIGHTS AT MOREHEAD STATE UNIVERSITY

(Oct. 1-7)

Monday, Oct. 2

Art Exhibit: Marshutz, Blanch, Abrahamson and Lowenstein, through Nov. 2, Claypool-Young Art Building, 8 a.m.-4 p.m., weekdays, free. Opening reception, Oct. 4, 7-9 p.m.
Additional information: (606) 783-5446.

Tuesday, Oct. 3

Fall Job Fair and Graduate School Day, Crager Room, Adron Doran University Center, 10 a.m.-1 p.m. Additional information: (606) 783-2233.

Faculty Recital: Dr. Robert Pritchard, flute, Duncan Recital Hall, Baird Music Hall, 8 p.m., free.
Additional information: (606) 783-2473.

Thursday, Oct. 5

National Depression Screening Day, Eagle Meeting Room, Adron Doran University Center, 9 a.m., free. Additional information: (606) 783-2123.

Faculty Recital: Michael Acord, clarinet, Duncan Recital Hall, Baird Music Hall, 8 p.m., free.
Additional information: (606) 783-2473.

Friday, Oct. 6

Eagle Soccer: MSU vs. Southeast Missouri State University, Mahaney Recreational Complex, 4 p.m., free. Additional information: (606) 783-2589.

Saturday, Oct. 7

2000 Walk for the Heart, Laughlin Health Building, registration begins at 8 a.m., walk starts at 9 a.m. Additional information: (606) 783-6500.

Preview Day, Crager Room, Adron Doran University Center, 9 a.m. Additional information: (606) 783-2000 or (800) 585-6781.

Tennis: Women's Eagle Fall Classic, through Oct. 8, Sadler Tennis Courts, all day, free.
Additional information: (606) 783-5408.

####

9-25-00rdm

News

University Communications

Pauline Young, Director

Morehead State University

UPO Box 1100

Morehead, KY 40351-1689

(606) 783-2030

Sept. 26, 2000

FOR IMMEDIATE RELEASE

MOREHEAD, Ky.---A "Small Business Safety and Security Seminar" will be offered by Morehead State University's Small Business Development Center on Tuesday, Oct. 10, from 9 to 11 a.m.

Designed for business owners, the workshop will be held at the Kentucky Folk Art Center. A member of the Morehead Police Department will speak on security tips and tactics for businesses, and how to handle shoplifting and bad checks.

All training programs, sponsored or co-sponsored by the SBDC, are available to all individuals without regard to race, color, sex, creed or national origin. Special arrangements for the disabled will be made if requested in advance.

There is a \$10 registration fee to attend the workshop, co-sponsored by the Citizens Bank of Morehead. Pre-registration is necessary because of limited seating.

Registration and additional information are available by calling (606) 783-2895.

####

js

News

University Communications

Pauline Young, Director

Morehead State University

UPO Box 1100

Morehead, KY 40351-1689

(606) 783-2030

Sept. 26, 2000

FOR IMMEDIATE RELEASE

MOREHEAD, Ky.---Morehead State University's chapter of the Kappa Sigma fraternity was recognized for scholastic achievements at a recent leadership conference program.

The MSU chapter was presented with three scholarship awards at a closing banquet of the program, which provides the national fraternity with the opportunity to recognize achievements by its undergraduate chapters and alumni. The awards were: Above All Men's Average Fall 1999; Above All Fraternity Fall 1999; and Above All Fraternity Spring 1999.

"We wanted to raise our academic standing and these awards are the benefits of hard work," said Shannon Harr, **Olive Hill** graduate student, who is the group's adviser. "I'm very proud of the members of the fraternity."

The president of the 25-member chapter is Brandon Laws, **Burlington** senior. The organization currently has five pledges, but recruitment is ongoing, Harr said.

####

rdm

News

University Communications

Pauline Young, Director

Morehead State University

UPO Box 1100

Morehead, KY 40351-1689

(606) 783-2030

Sept. 26, 2000

FOR IMMEDIATE RELEASE

MOREHEAD, Ky.---Morehead State University's third Annual Campus Giving Campaign is now underway with proceeds from the campus-wide initiative to be used to fund scholarships, program enhancements, professional development and other needs of the institution.

The theme of "One Eagle at a Time" will be retained for the 2000 effort, according to Madonna Weathers, who along with Dr. Gerald DeMoss, will co-chair the campaign.

More than 25 faculty, staff and student volunteers have agreed to lead the fundraising activities in an attempt to reach a \$95,000 goal. Their role will be to plan, conduct and evaluate every aspect of the campaign, according to Dr. DeMoss.

"We have a dedicated and committed group of campus volunteers this year who show every indication of bringing great energy to the campus campaign" he said. "We are appreciative that students have asked to take an active role in this year's campaign," he added.

All funds raised from the sale of 'Eagles' during the campaign will not only promote spirit, but also raise funds for the Student Emergency Loan Fund. "We are extremely lucky to have student leaders Teresa Johnson, (Student Government Association president) and Phillip James, (Residence Hall Association president) as campaign volunteers this year" Weathers said.

Other campaign volunteers include: Al Baldwin, institutional planning; Francene Botts-Butler; multicultural student services; Gene Caudill, physical plant; Shannon Colvin, housing; Lary Cowart and Janet Ratliff, business; Jackie Darling, science and technology; Phyllis Dehart, human resources; Kathleen Dowling, grants and contracts; John Ernst, geography, government and history; Trey Fitch and Lynne Fitzgerald, education and behavioral sciences; Bob Franzini, art; Phyllis Gilliland, public safety; Mike Hail, IRAPP; Mike Hopper and Laura Pace, extended campuses, continuing education and academic support; Larry Lipker, admissions; Bill Malone and Debbie Morris, Camden-Carroll Library; Linda Morris, Caudill Health Clinic; John Philley, science and technology and retirees; Ken Sexton, communications; Linda Simpson, university relations; Jeannine Stevens, accounting and budgetary control; and Rusty Thurman, information technology.

"With this group working together we anticipate a third successful campus giving campaign" the co-chairs concluded. Results of the three-month campaign, which began Sept. 9, will be announced during halftime ceremonies of the MSU/Samford basketball game on Saturday, Dec. 9.

####

Photo

University Communications

Pauline Young, Director

Morehead State University

UPO Box 1100

Morehead, KY 40351-1689

(606) 783-2030

MSU GATHERING 'ONE EAGLE AT A TIME'

The third annual Campus Giving Campaign is underway with more than 25 faculty, staff and student volunteers assisting the in fundraising activities to reach a \$95,000 goal. The three-month campaign began with a kickoff on Sept. 9, with announcement of the campus volunteers who will be assisting with the "One Eagle At a Time" campaign. They include, front row, from left, Phillip James, Flatwoods senior, and Teresa Johnson, Jackson, Ohio, senior, holding banner. Second row, from left, are Debra Morris, Francene Botts-Butler, Jackie Darling and Jeanine Stevens. Third row, from left, are Margaret Sloan, Linda Morris, Linda Simpson, Phyllis Dehart, Madonna Weathers and Mindy Highley. Back row, from left, are Patsy Bumgardner, Janet Ratliff, Larry Lipker, Ken Sexton and Gene Caudill.

(MSU photo by Tim Holbrook)

9-26-00

MSU is an affirmative action, equal opportunity educational institution.



News

University Communications

Pauline Young, Director

Morehead State University

UPO Box 1100

Morehead, KY 40351-1689

(606) 783-2030

Sept. 28, 2000

FOR IMMEDIATE RELEASE

MOREHEAD, Ky.---“An Innovative Spirit: The Southern Highland Craft Guild Celebrates 70 Years,” a traveling exhibition, opens at the Kentucky Folk Art Center in Morehead on Thursday, Oct. 12. This landmark exhibition is made up of 92 works produced in Southern Appalachia during the last seven decades.

An Innovative Spirit highlights the accomplishments of the Southern Highland Craft Guild and its members, with traditional and non-traditional objects made by more than 90 different crafts men and women, between 1930 and 2000. The exhibition demonstrates the gradual evolution of certain craft forms over this 70-year period, explores issues of tradition and innovation, and illustrates changes that have taken place in the use of materials and design.

“If there is one constant in the objects made in this region over the past 300 years, it is innovation and change,” writes Robert S. Brunk, in the exhibition catalogue. “The objects made by Guild members over the past 70 years are part of a much longer continuum of cultural memory, assimilation and invention. Why are we surprised that the objects keep changing? Are we afraid that something will be lost if we don’t see objects familiar to us?”

Since its founding in 1930, the guild has nurtured the creative skills and promoted the work of craftspeople from 293 mountain counties in nine southern states, and has served as a model for many similar crafts organizations formed elsewhere in the country. The guild’s mission has been to bring together the crafts and craftspeople of the Southern Highlands for the benefit of shared resources, education, marketing and conservation. The organization’s education role resulted in the development of this important exhibition.

“An Innovative Spirit: The Southern Highland Craft Guild Celebrates 70 Years,” will be on display at the Kentucky Folk Art Center, through Dec. 22. The Center, located at 102 West First Street in Morehead, is open Monday-Saturday, 9 a.m. to 5 p.m., and Sundays, 1-5 p.m.

Kentucky Folk Art Center is cultural and educational service of Morehead State University. Additional information is available from the Center’s web site at www.kyfolkart.org, or by calling (606) 783-2204.

####

kfac

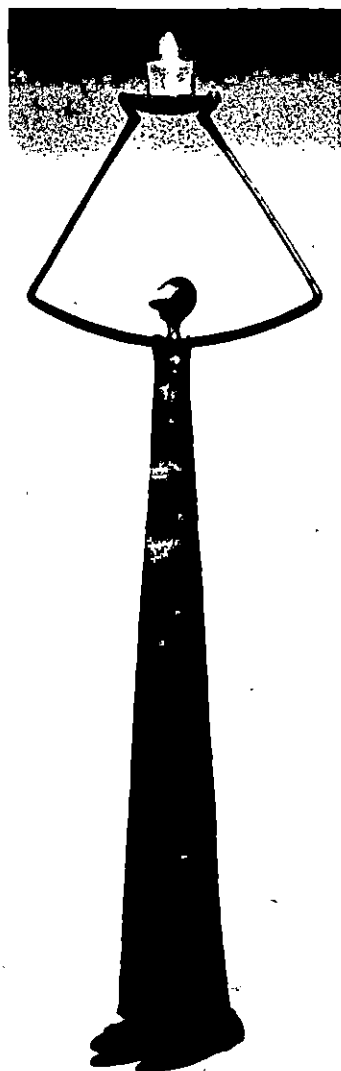
MSU is an affirmative action equal opportunity educational institution.

TRAVELING EXHIBITION OPENS AT KFAC

“An Innovative Spirit: The Southern Highland Craft Guild Celebrates 70 Years,” a traveling exhibition, opens at the Kentucky Folk Art Center in Morehead on Thursday, Oct. 12. Works on display will include items like this “Hostess Candleholder” crafted out of steel by Paige Davis. This landmark exhibition is made up of 92 works produced in Southern Appalachia during the last seven decades. Additional information is available by calling KFAC at 3-2204 or by visiting the Web site at www.kyfolkart.org.

9-28-00ahn

MSU is an affirmative action equal opportunity educational institution.



News

University Communications

Pauline Young, Director

Morehead State University

UPO Box 1100

Morehead, KY 40351-1689

(606) 783-2030

Sept. 28, 2000

FOR IMMEDIATE RELEASE

MOREHEAD, Ky.---A "Staff Performance and Management System" workshop will be held on Wednesday, Oct. 4, beginning at 1:50 p.m., in the Riggle Room of the Adron Doran University Center on the Morehead State University campus.

The session, sponsored by MSU's offices of Human Resources and Continuing Education, will be led by Roger Barker, director of Human Resources.

The workshop will provide information about staff performance that is of importance to the supervisor and the employee being evaluated. Discussion of MSU's staff performance management system also will be included.

Because of limited seating, pre-registration is necessary and must be made before Oct. 3. The program will be of interest to all members of the workforce. The cost is \$25 for the two-hour seminar.

Registration and additional information are available by calling Cindy Thompson at 783-5480.

####

js

News

University Communications

Pauline Young, Director

Morehead State University

UPO Box 1100

Morehead, KY 40351-1689

(606) 783-2030

Sept. 28, 2000

FOR IMMEDIATE RELEASE

MOREHEAD, Ky.---Morehead State University is making going to college a little easier for high school students by hosting a Preview Day on Saturday, Oct. 7.

“Preview Day will give future University students the opportunity to locate answers to questions they may have about campus programs, from academics to financial aid to athletics,” said Larry Lipker, assistant director of admissions. The day will begin at 9 a.m. in the Adron Doran University Center.

Students and parents may take a campus tour and meet with faculty members from the academic departments. “Parent participation is very beneficial, as well,” Lipker said. “They will hear from administrators, faculty, current students and their parents on what life is like on the campus.”

While visiting MSU, future students and their parents may see Eagle athletes in action by attending a soccer game and tennis match. The soccer team will take on Southeast Missouri State University at Mahaney Recreational Complex on Friday, Oct. 6, at 4 p.m., and the men’s and women’s tennis teams will host the Eagle Fall Classic on the Sadler Tennis Courts all day on Saturday, Oct. 7.

A second Preview Day is slated for Saturday, Nov. 4, on the campus. Additional information about these special days is available from the Office of Admissions at (606) 783-2000 or (800) 585-6781.

####

rdm

Photo

University Communications

Pauline Young, Director

Morehead State University

UPO Box 1100

Morehead, KY 40351-1689

(606) 783-2030

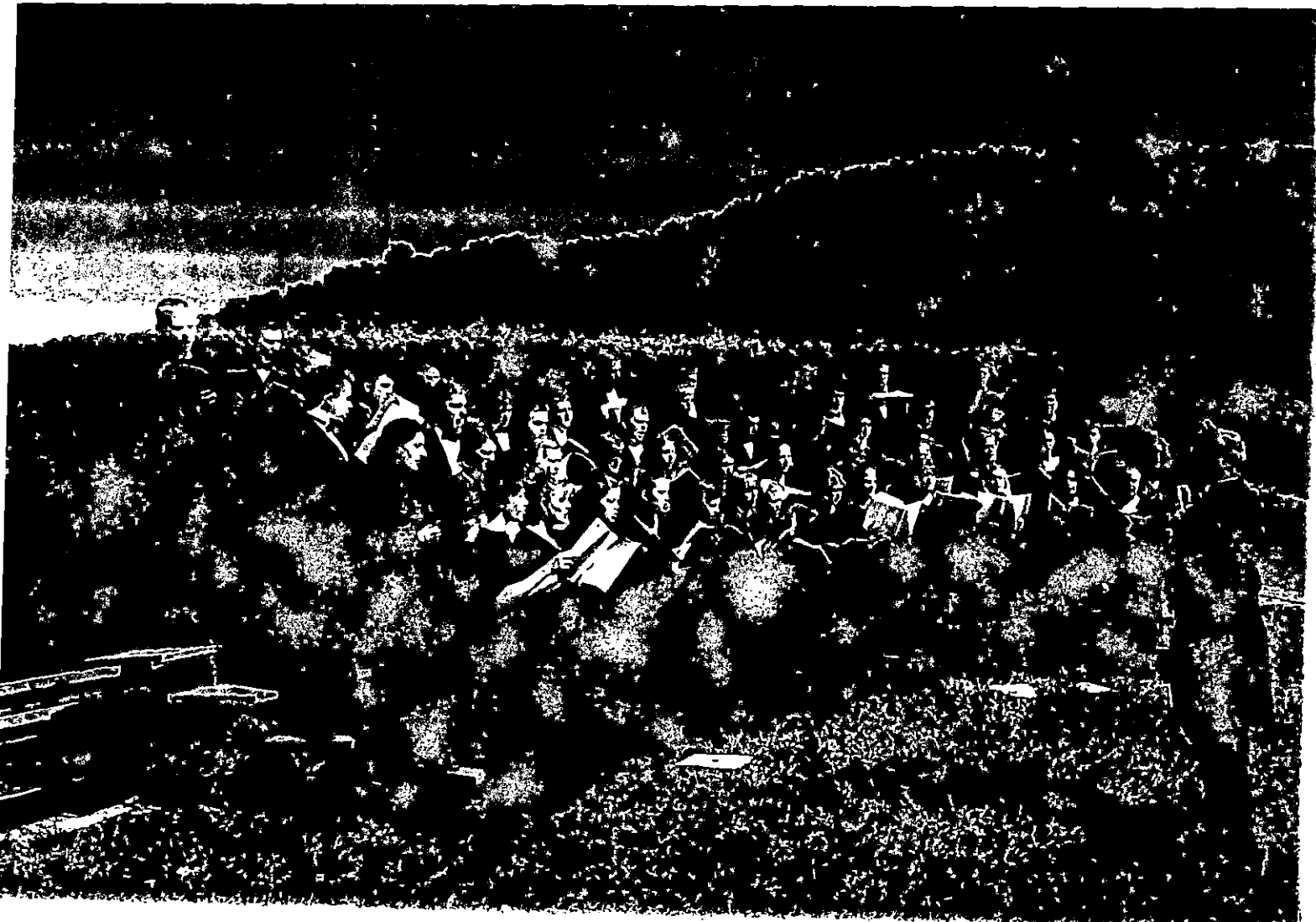
SINGING BY THE LAKE

Morehead State University's Concert Choir has been invited to sing at the Kentucky Music Educators Association convention in February. The 57-member choir competed against other choirs in the state for the opportunity to perform at KMEA, according to Dr. Greg Detweiler, director of the group. Recently, the choir chose to practice in the sunshine by Eagle Lake where they sang Mendelssohn's "On the Lake."

(MSU photo by Tim Holbrook)

9-29-00py

MSU is an affirmative action equal opportunity educational institution.



News

University Communications

Pauline Young, Director

Morehead State University

UPO Box 1100

Morehead, KY 40351-1689

(606) 783-2030

Sept. 29, 2000

FOR IMMEDIATE RELEASE

MOREHEAD, Ky.---It will be a time of recognition, reunions and reminiscing at Morehead State University's "There's no place like Homecoming 2000" activities, Oct. 19-22.

Six individuals who made outstanding contributions to the Eagle athletic program will be inducted into the Athletic Hall of Fame during ceremonies on Friday, Oct. 20. Reservations for the 7:30 p.m. banquet, which will be held in the Crager Room of the Adron Doran University Center, may be made by calling the MSU Alumni Association at (606) 783-2080 or toll free at (800) 783-ALUM, before **Friday, Oct. 6**. The cost is \$12 per person.

The newest members of the Athletic Hall of Fame will be Rex Chaney (golf and baseball coach), Dan Gooch of Utica (football), Chester Greene of Georgetown, Ohio, (track and cross country), John High of Jackson (football), Robin Harmon-Newsome of Lovely (women's basketball) and Dr. Mohammed Sabie (soccer coach).

Additionally, the University's cheerleading coach, Myron Doan, and bowling club coach, Larry Wilson, will receive special recognition.

The unveiling of the new eagle print by alumnus John Ward of Mt. Sterling will be a part of the evening's ceremony. The full-color print, signed by the artist, will be available for purchase throughout the weekend.

The annual celebration gets underway on Thursday, Oct. 19, with the Homecoming Parade that will taxi down Main Street, beginning at 6:30 p.m. A community pep rally at Jayne Stadium will conclude the event.

The Alumni Association will host a Welcome Reception on Friday from 5 to 7 p.m. at the Ramada Inn in Morehead. To be part of the fun, make plans now to meet with your classmates and chart your activities for the weekend.

On Saturday, Oct. 21, the day begins at 10 a.m. with registration and a Kentucky Brunch in the Adron Doran University Center. The classes of 1950 and 1975 will hold reunions at 11 a.m. that day. The cost to attend the brunch is \$10 for adults and \$5 for children.

(MORE)

Homecoming at MSU

2-2-2-2

The traditional Homecoming football game will pit the Eagles against Bowie (Md.) State at 1:30 p.m. The Alumni Band will perform for the crowd and the Homecoming King and Queen will be crowned.

The Homecoming Fish Fry, scheduled for post-game, offers food and fellowship for all those who have come "home" for the weekend.

Other activities slated during the Homecoming celebration include: an All-Greek Reunion at T-bone's Steakhouse from 6 p.m. until midnight on Saturday; and the baseball alumni and the Women's Recreation Association (WRA) will meet on the campus throughout the weekend. The WRA members will be recognized at several activities including the hall of fame banquet, and volleyball and football games. They will be guests of the University for a reception on Saturday in the Len Miller Room of the Academic-Athletic Center.

To mark the occasion, the Alumni Association is offering special "There's No Place Like Homecoming" t-shirts, which must be ordered by **Monday, Oct. 9**. The cost is \$15 each, plus shipping, for long sleeves or \$10, plus shipping, for short sleeves, whether you choose the general version or the one for Greeks. Details for ordering are available from the Alumni Association.

Additional information on Homecoming 2000 is available by calling (606) 783-2080.

####

News

University Communications

Pauline Young, Director

Morehead State University

UPO Box 1100

Morehead, KY 40351-1689

(606) 783-2030

Sept. 29, 2000

FOR IMMEDIATE RELEASE

PIKEVILLE, Ky.--Morehead State University representatives are going to Pikeville for a "Meet MSU Night."

The event, which is designed for high school students and their parents, is scheduled for Tuesday, Oct. 10, from 6:30 to 8 p.m. at the Landmark Inn.

"We would like to showcase our excellent programs and wonderful faculty and staff to all local high school students," said Joel Pace, associate director of admissions. "We hope you will come and discover all the good things that are happening at Morehead State," he added.

MSU representatives from the academic departments, housing, financial aid, admissions, minority student affairs, student activities and academic support will be among those on hand to talk with future students. University President Ronald G. Eaglin and Dr. Michael R. Moore, executive vice president for academic affairs, are scheduled to be in attendance.

Students may register at the door for a \$1,000 residence hall grant.

Additional information is available from the Office of Admissions at (800) 585-6781 or (606) 783-2000.

####

rdm

News

University Communications

Pauline Young, Director

Morehead State University

UPO Box 1100

Morehead, KY 40351-1689

(606) 783-2030

Sept. 29, 2000

FOR IMMEDIATE RELEASE

PRESTONSBURG, Ky.---Morehead State University representatives are going to Prestonsburg for a "Meet MSU Night."

The event, which is designed for high school students and their parents, is scheduled for Thursday, Oct. 12, from 6:30 to 8 p.m. at the Holiday Inn.

"We would like to showcase our excellent programs and wonderful faculty and staff to all local high school students," said Joel Pace, associate director of admissions. "We hope you will come and discover all the good things that are happening at Morehead State," he added.

MSU representatives from the academic departments, housing, financial aid, admissions, minority student affairs, student activities and academic support will be among those on hand to talk with future students. University President Ronald G. Eaglin and Dr. Michael R. Moore, executive vice president for academic affairs, are scheduled to be in attendance.

Students may register at the door for a \$1,000 residence hall grant.

Additional information is available from the Office of Admissions at (800) 585-6781 or (606) 783-2000.

####

rdm

Morehead State University

UPO Box 1100

Morehead, KY 40351-1689

(606) 783-2030

OFFICERS ELECTED DURING FAMILY WEEKEND AT MSU

Morehead State University's Family Association installed new officers during the University's annual Family Weekend held recently on the campus. Outgoing co-presidents, from left, Sue and Jim Dotson of **Grove City, Ohio**, installed new officers, Richard and Faye Barber of **Greenup**, incoming presidents, and Sally and Sid Baxter of **Maysville**, co-presidents-elect. The officers serve a one-year term. At right is Jeanie Scruggs, administrative assistant to the vice president for student life, who works with the Family Association.

(MSU photo by Tim Holbrook)

9-29-00py

MSU is an affirmative action, equal opportunity educational institution.



Morehead State University

UPO Box 1100

Morehead, KY 40351-1689

(606) 783-2030

FRANKFORT STUDENT WINS SCHOLARSHIP

Kristi Anderson, **Frankfort** freshman, was a scholarship recipient during Morehead State University's Family Weekend, held recently. The presentation was made by co-presidents-elect of the Family Association, Sally and Sid Baxter of **Maysville**, during half-time of the football game. In back is Anderson's father, Bobby Anderson.

(MSU photo by Tim Holbrook)

9-28-00py

MSU is an affirmative action, equal opportunity educational institution.



Photo

University Communications

Pauline Young, Director

Morehead State University

UPO Box 1100

Morehead, KY 40351-1689

(606) 783-2030

SCHOLARSHIP RECIPIENT AT MSU

Kenya Cooksey, **Louisville** freshman, won a \$250 scholarship during Morehead State University's Family Weekend activity held recently on the campus. The presentation was made during halftime ceremonies of the football game by Teresa Johnson, **Jackson, Ohio**, senior, who is president of the Student Government Association.

(MSU photo by Tim Holbrook)

9-28-00py

MSU is an affirmative action, equal opportunity educational institution.



Photo

University Communications

Pauline Young, Director

Morehead State University

UPO Box 1100

Morehead, KY 40351-1689

(606) 783-2030

REGENTS HALL GETS AWARD FOR ATTENDANCE

During Family Weekend, held recently on the Morehead State University campus, the residence halls competed for cash prizes for the highest parents participation award. Phillip James, **Flatwoods** senior and president of the Residence Halls Association, presented the check to Jody Abdon, **Argillite** junior nursing major, a resident of Regents Hall, winner of the Hall Participation Award.

(MSU photo by Tim Holbrook)

9-28-00py

MSU is an affirmative action, equal opportunity educational institution.

