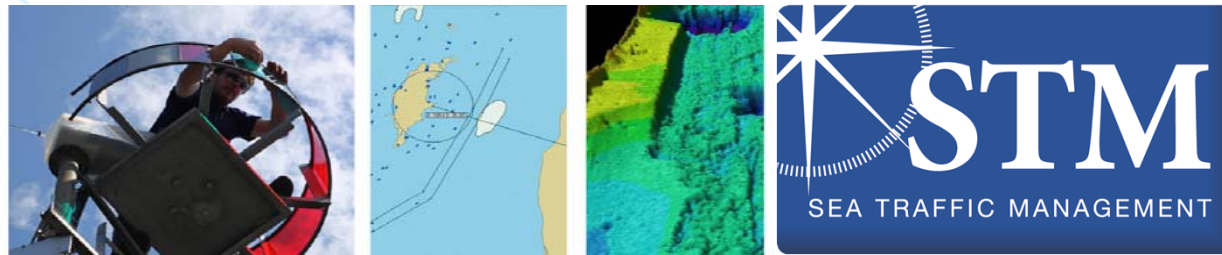


# Research and Innovation



- taking the Swedish Maritime Administration and the maritime sector into to future

August 2018

# Mission

**The Swedish Maritime Administration (SMA)** is an authority and public enterprise within the transport sector, responsible for maritime infrastructure and services connected to maritime transport.







## Objectives of Research and Innovation

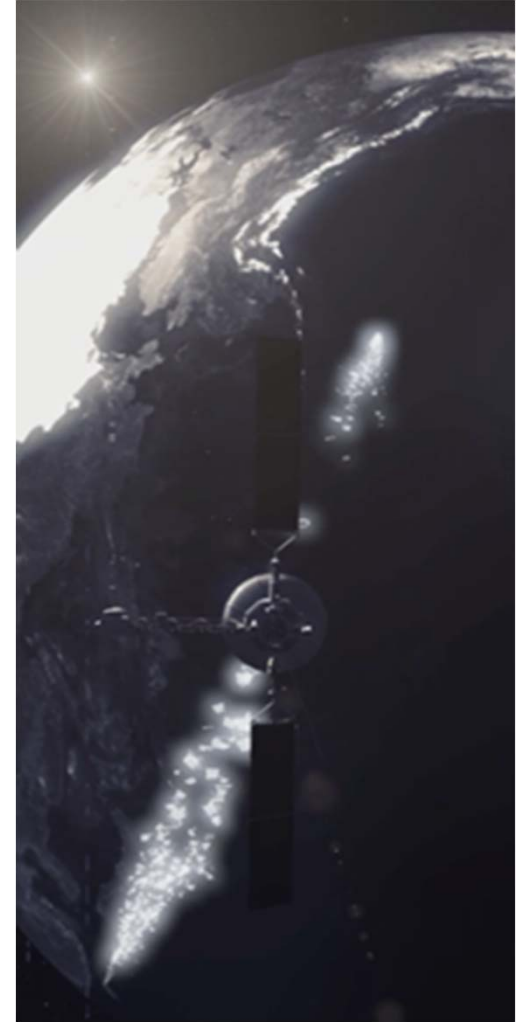
- R&I develops services, products and operations of SMA
- R&I contributes to sustainable, safe and efficient maritime transport
- R&I strengthen the competitiveness of maritime transport





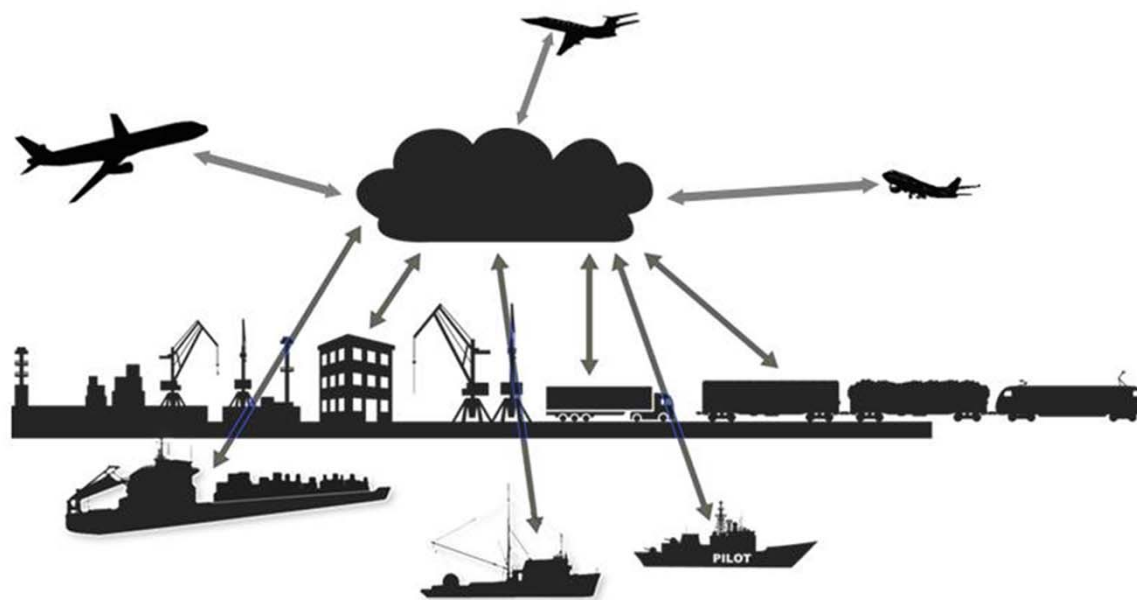
## Focus areas of R&I

- Digitalisation
- Automation
- Positioning
- Information sharing
- Sea Traffic Management



# Digitalisation and Sea Traffic Management

- A prerequisite for a sustainable and integrated transport system



# Benefits of R&I within SMA...

Why  
R&I?







 Co-financed by the European Union  
Connecting Europe Facility



A paradigm shift for shipping, similar to AIS!



## Examples of R&I: VTS and pilotage



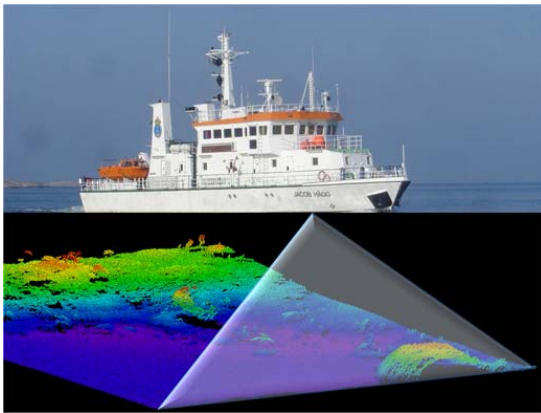
- STM in practice
- RESKILL och F-AUTO
- Increased automation of pilotage services ordering and planning
- Shore-based navigational assistance
- Autonomous safety

## Examples of R&I: SAR and icebreaking



- STM in practice
- New sensor technology for SAR
- New technology for competence building and trials
- Winter navigation research programme with Finland

## Examples of R&I: fairways, aids to navigation and hydrography



- Robust positioning
- Digital and connected fairways
- Broadband at sea
- UKC Management
- New methods for hydrographic surveys

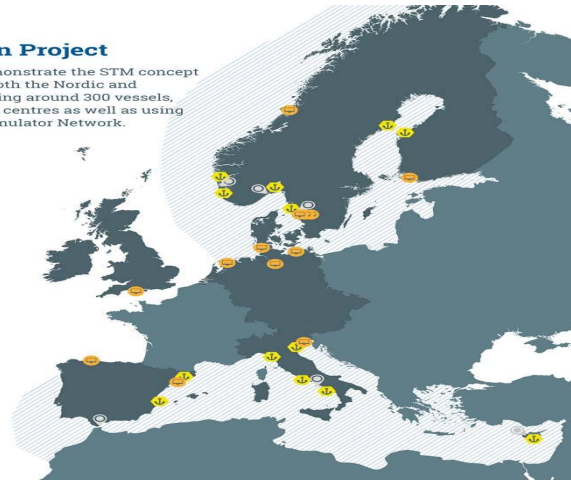
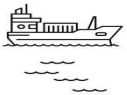


# The maritime simulator centre and the Simulator Network

## STM Validation Project

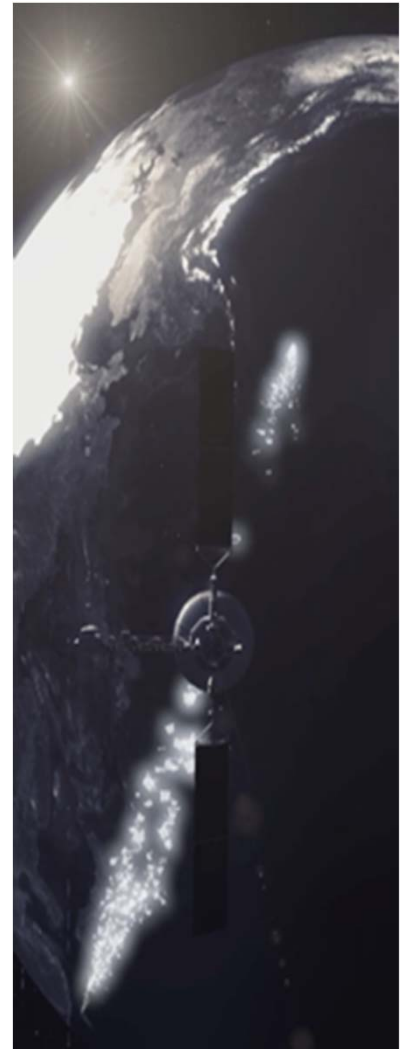
The STM Validation Project will demonstrate the STM concept in large-scale test beds in both the Nordic and Mediterranean Seas, encompassing around 300 vessels, 13 ports and 6 shore based service centres as well as using the European Maritime Simulator Network.

- Simulation centre in European simulation network (EMSN)
- Port CDM Port
- Shore centre
- Test bed for STM-services
- Country with project partner(s)



## Requirements for long-term R&I at SMA

- External and internal focus
- Long-term financing
- Close collaboration within the organisation
- Close collaboration with the private sector, other authorities and academia
- International cooperation
- Continued high ambition, engagement and positive energy among experts and management





**THINK DIFFERENT**  
**MAKE THINGS HAPPEN**  
**MAKE A DIFFERENCE**