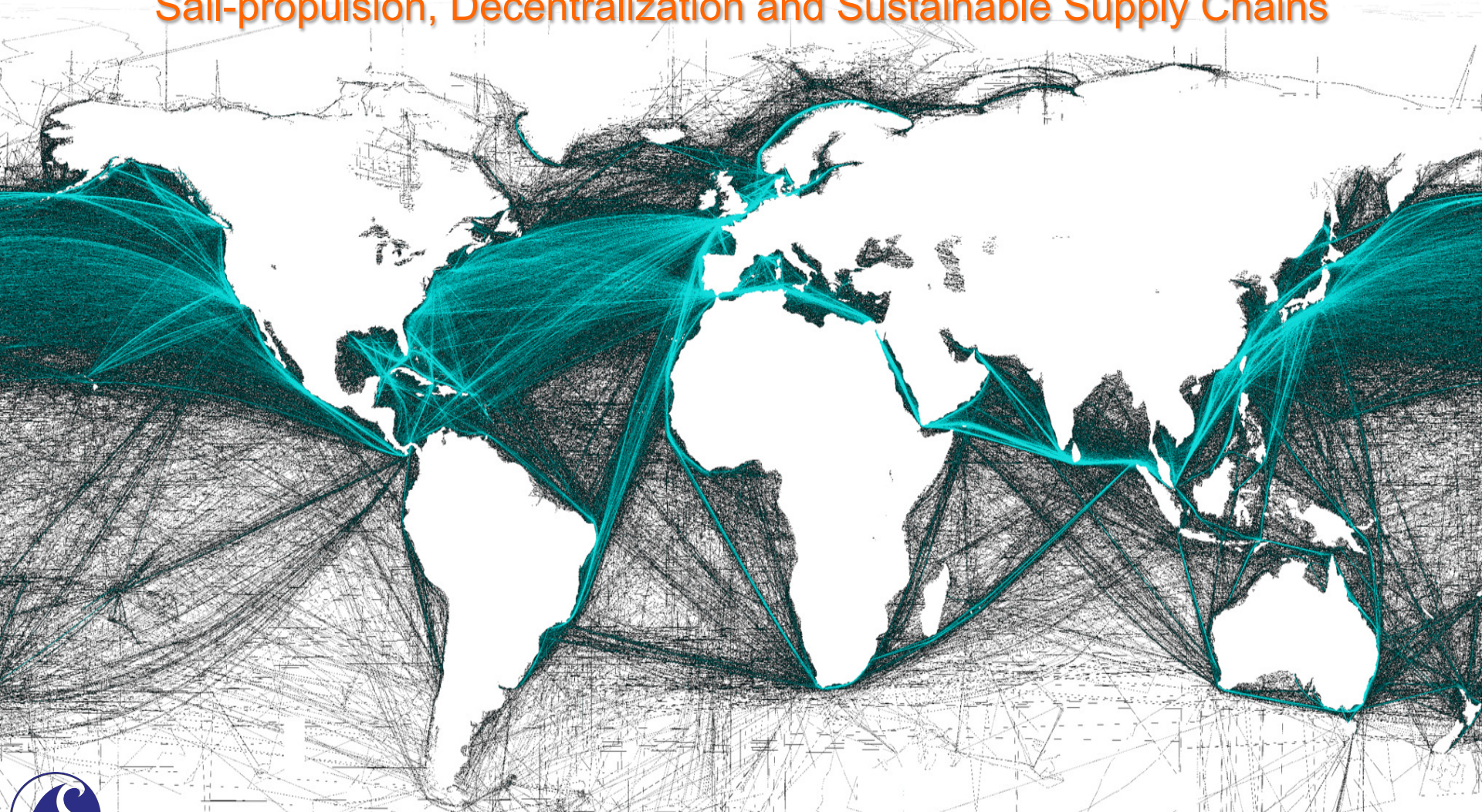


Fair Winds Trust

Shifting the Paradigm

Sail-propulsion, Decentralization and Sustainable Supply Chains



madadh.maclaine@fairwindstradingcompany.org



The triple EEE's of Shipping Impacts;

- Energy
- Eco-systems
- Economics



Energy Impacts



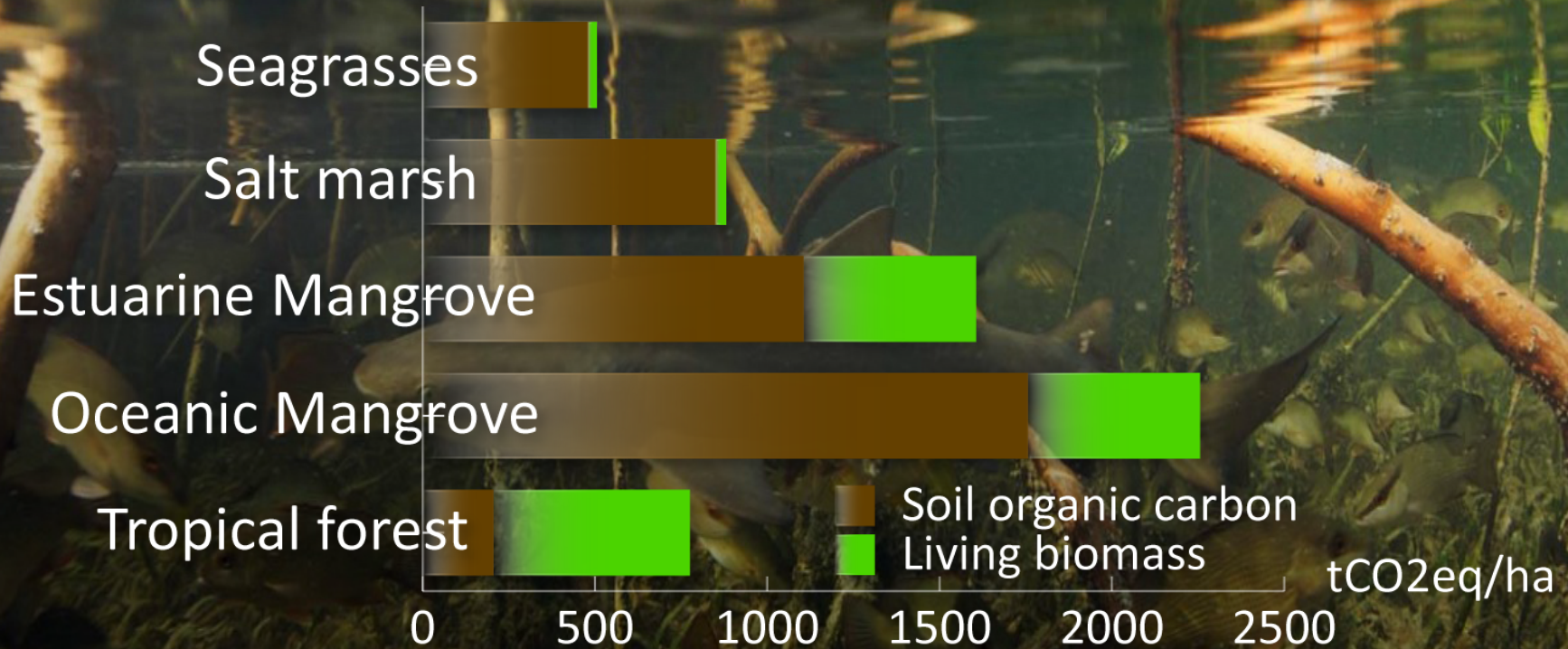
Geopolitical / Environmental



Eco-systems

Dredging + Wake Action

Blue Carbon - Fish stocks



Economics

What we transport from where
can change the economics
balance of the world



Virtuous circle of trade



Ethical brands

High value cargo

Revenue stream



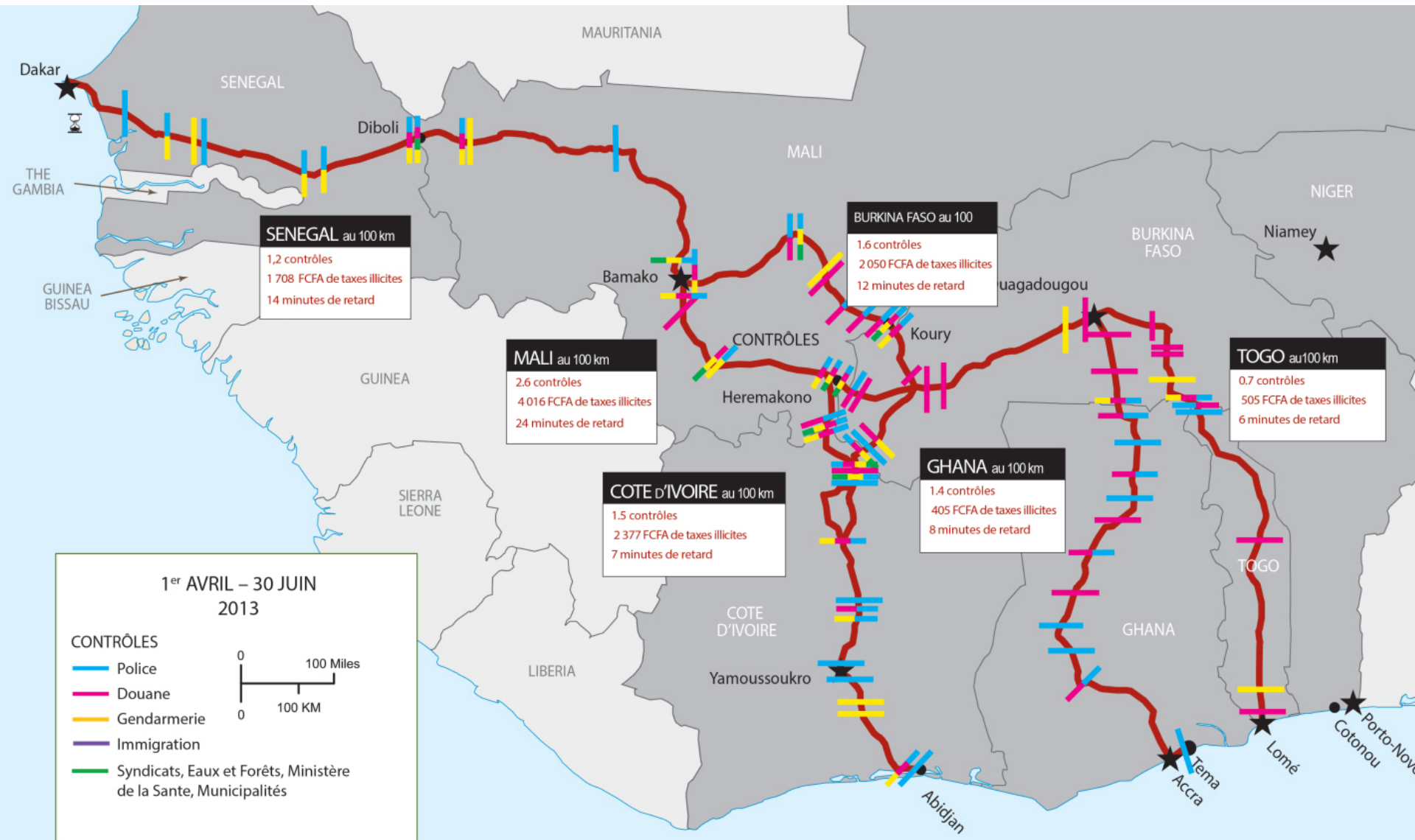
Fair Winds Trust Working with local producers



Remote coastal village



West African Road Networks





Guinea Bissau

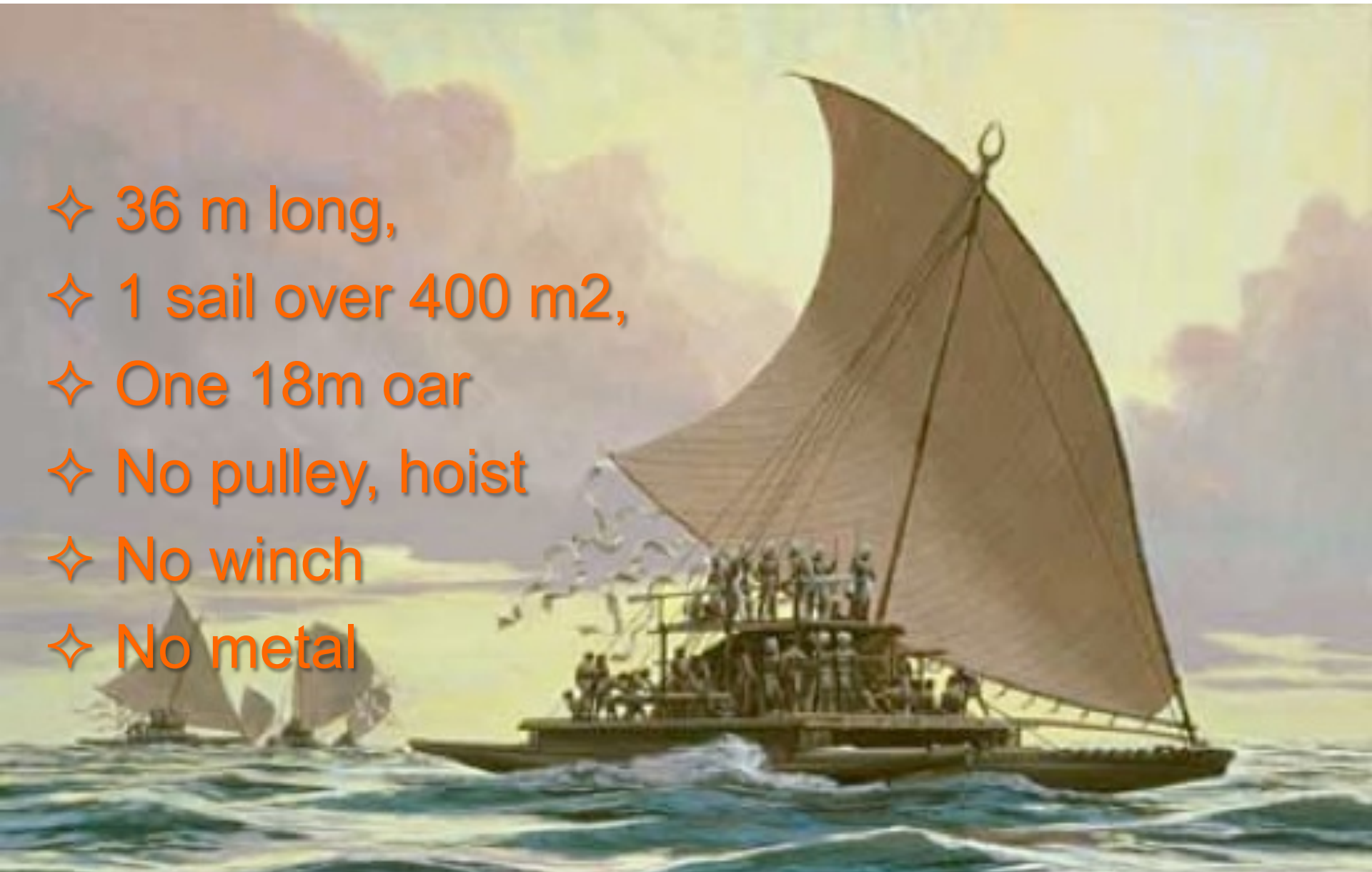




Fijian Proa



- ✧ 36 m long,
- ✧ 1 sail over 400 m²,
- ✧ One 18m oar
- ✧ No pulley, hoist
- ✧ No winch
- ✧ No metal



Transporting Copra



- ✓ High Speed
- ✓ Shallow draft
- ✓ Stable
- ✓ Load capacity





The Praocargo





Stats

- LOA – 60m
- Draught loaded - 4m - 6 mtr
depending on rudder position
- Cargo capacity – 500t
- Weight of light ship - 160t (max)
- Speed maximum 25knts,
average 13kns
- Electric propulsion system
- Electric RIB annex can be used as tug



Multi Access



The Cargo Proa can access goods
anywhere without negatively impacting the
natural environment.





The Cargo Proa will give these women access to world markets





North Sea Region Sail Cargo Transport Network

- eco-sailcargo ships
- ethical goods
- networks of private and public NSR agents
- impact local & regional levels.



Project Objectives



Reduce CO₂ & Costs

- Establishing Sail Cargo Hubs
- Regional Entrepreneurial Ports
- Recreating short sea shipping routes
- Supporting local business



Local Benefits



- **Full logistics cycle**

1. Reduction of land based transport emissions
2. Farm/factory gate to market/dinner plate
3. Hinterland transport; canals, trains...

- **Small ports and port cities benefits**

1. Blue growth/economic development –
2. Local ship repairs, port facilities,
3. Victualing, Employment,
4. Ship training, Crew facilities
5. Tourism, Heritage, Nautical Museums

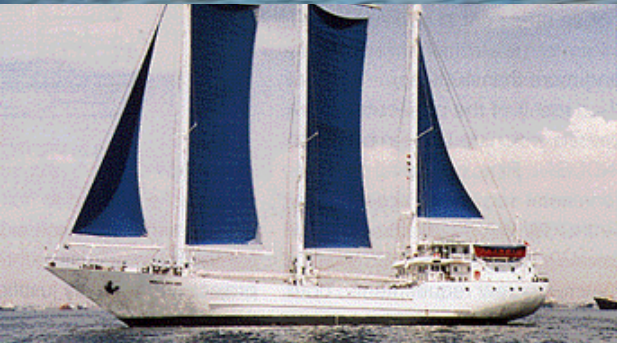


Traditional Sail Cargo & Training





INNOVATION



Linking the North Sea Region to an ethical maritime supply network.



Sustainable Impacts;

- ✓ Energy - Renewable
- ✓ Economics - Ethical
- ✓ Eco-systems - Protected

