

World Maritime University
The Maritime Commons: Digital Repository of the World
Maritime University

WMU in the News

5-20-1985

WMU : World Maritime University, Malmoe Sweden

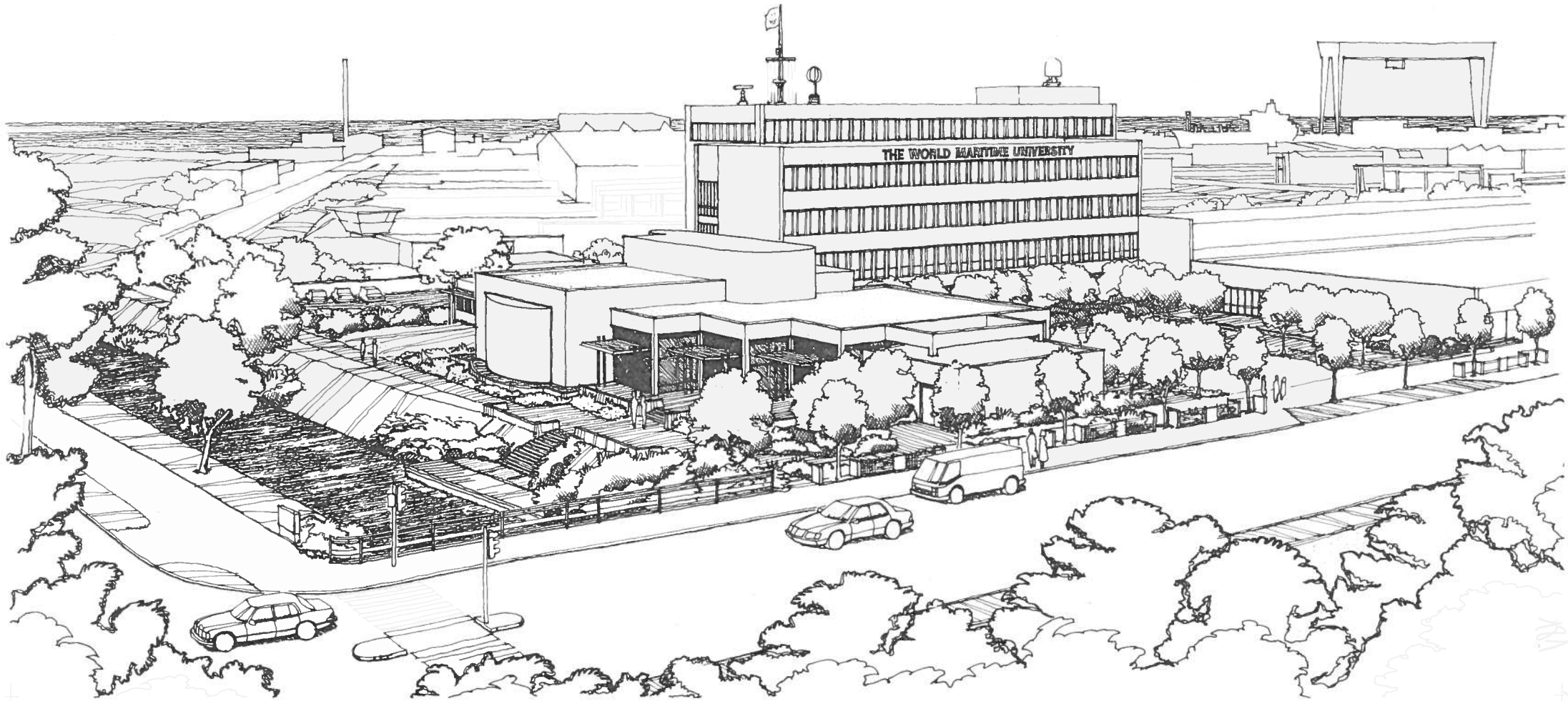
Thurfjell Arkitektkontor

Follow this and additional works at: http://commons.wmu.se/wmu_news

Recommended Citation

Arkitektkontor, Thurfjell, "WMU : World Maritime University, Malmoe Sweden" (1985). *WMU in the News*. 209.
http://commons.wmu.se/wmu_news/209

This News Article is brought to you courtesy of Maritime Commons. Open Access items may be downloaded for non-commercial, fair use academic purposes. No items may be hosted on another server or web site without express written permission from the World Maritime University. For more information, please contact library@wmu.se.



WMU

WORLD MARITIME UNIVERSITY
MÄLMÖ SWEDEN

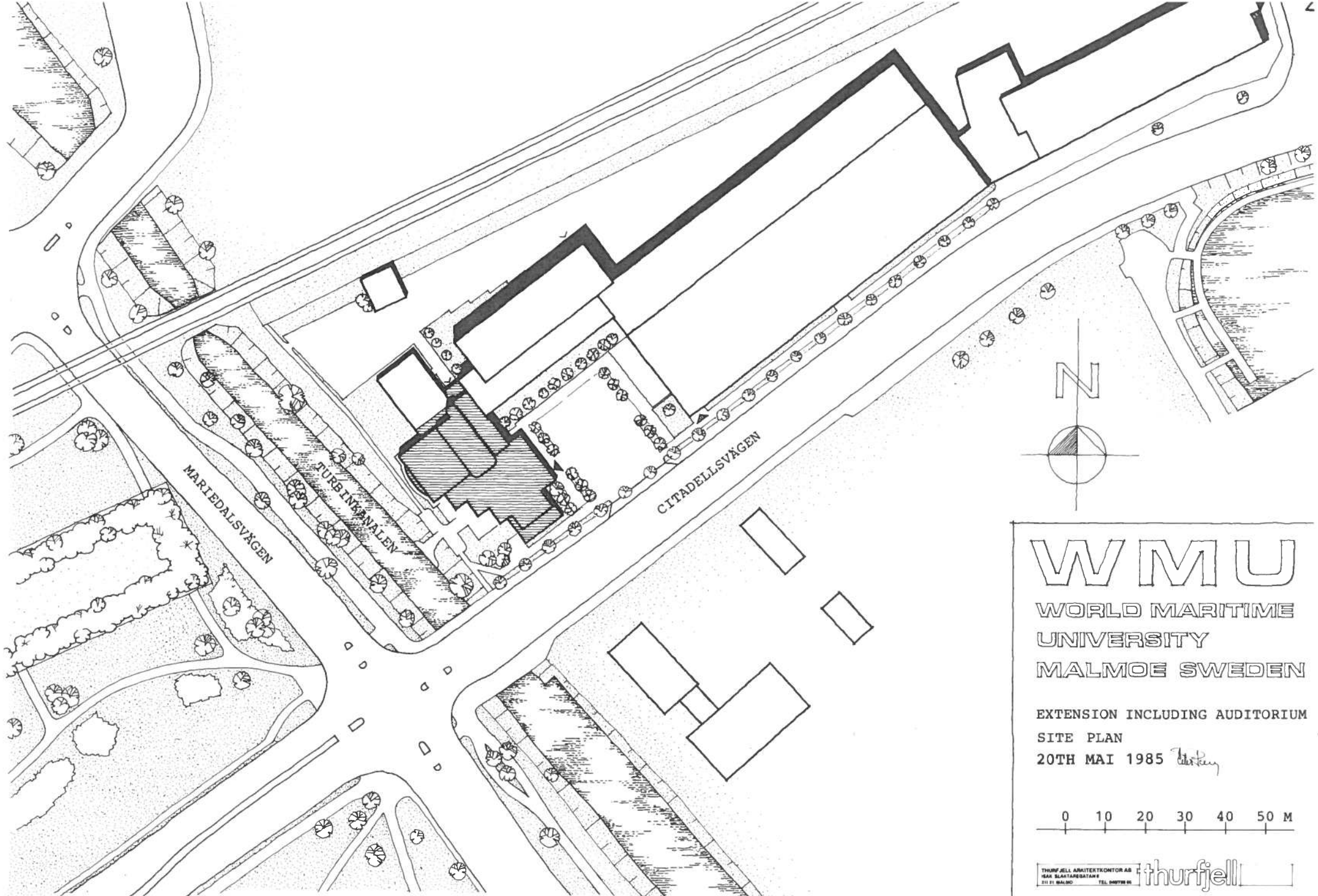
VIEW FROM SOUTH
20TH MAI 1985

Ståhl

THURFJELL

thurfjell

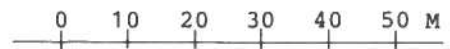
WMA
1985. 5. 20



WMMU

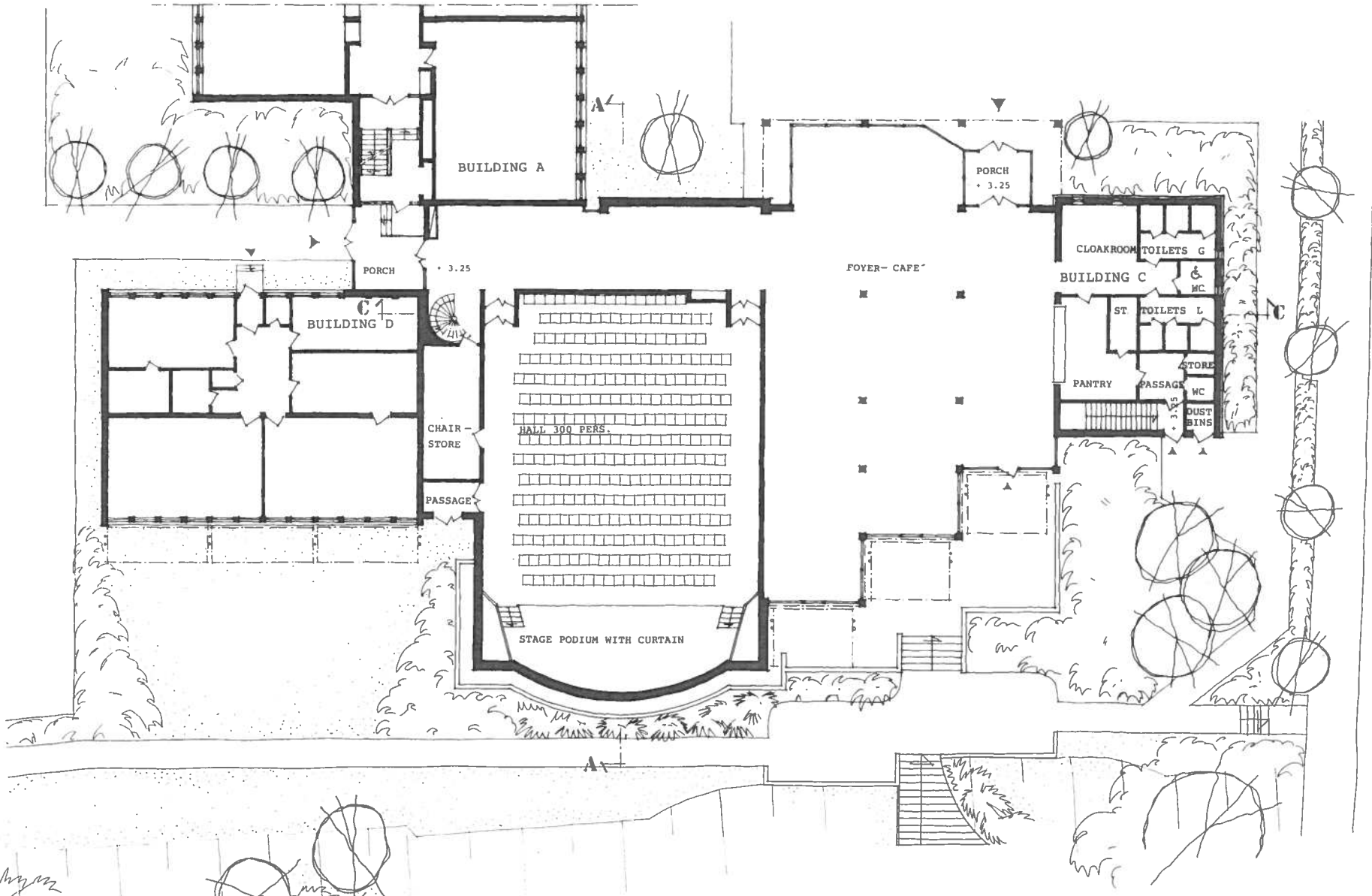
WORLD MARITIME
UNIVERSITY
MALMOE SWEDEN

EXTENSION INCLUDING AUDITORIUM
SITE PLAN
20TH MAI 1985 *Thurfjell*



THURFJELL ARCHITEKTKONTOR AB
15ÅR SLÅTTAREGÅTAN 1
211 21 MALMÖ TEL. 040730 00

thurfjell



WMU

WORLD MARITIME UNIVERSITY
MALMOE SWEDEN

GROUND FLOOR AND LANDSCAPING

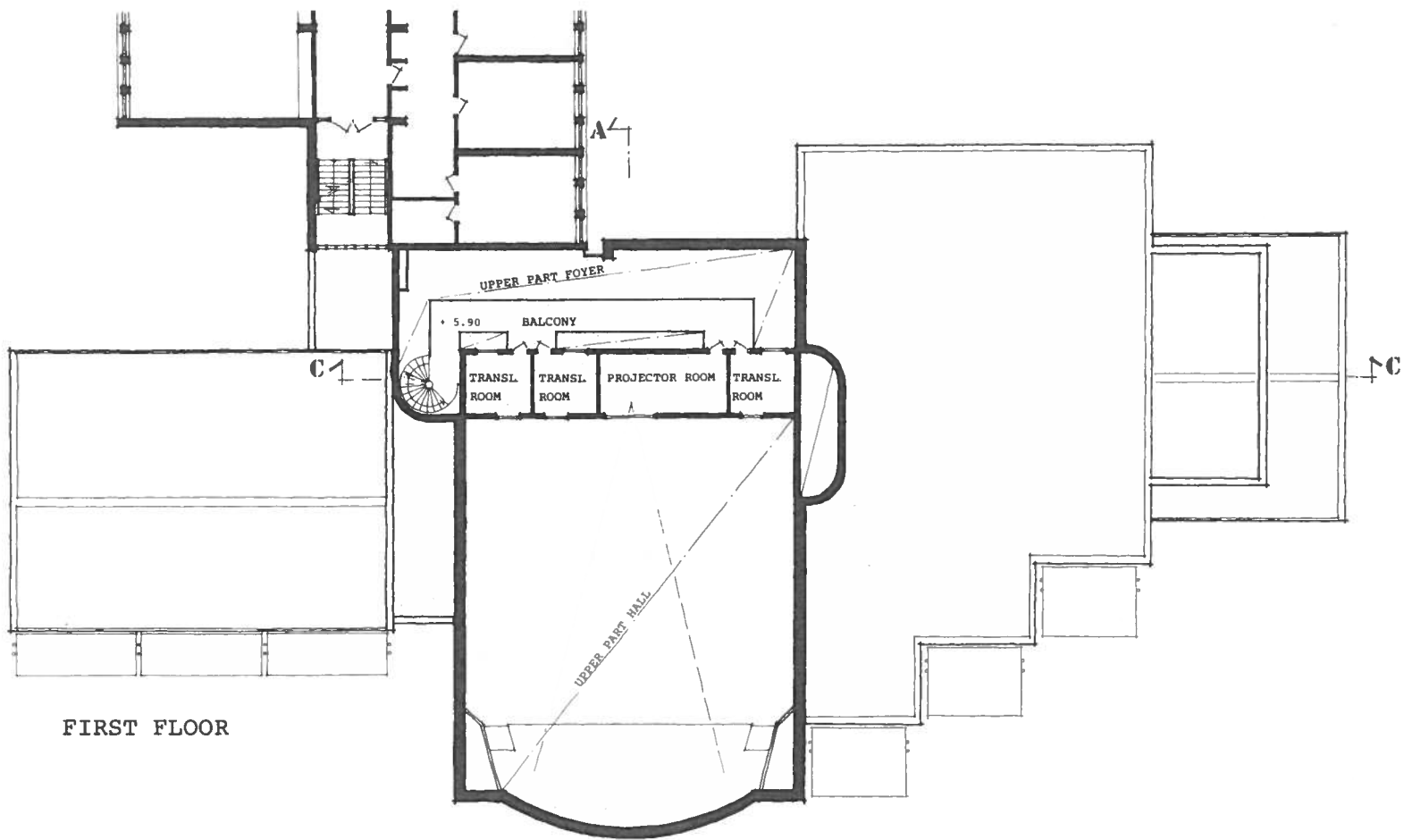
20TH MAI 1985

thurfjell

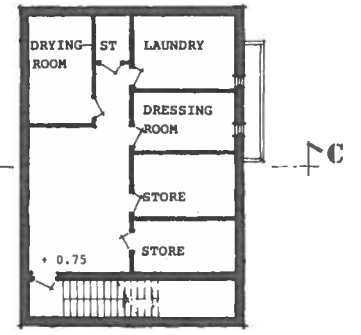


THURFJELL ARKITEKTONOR AB
ISAK BLAÅBERGATAN 4
211 21 MALMÖ TEL. 040789 60

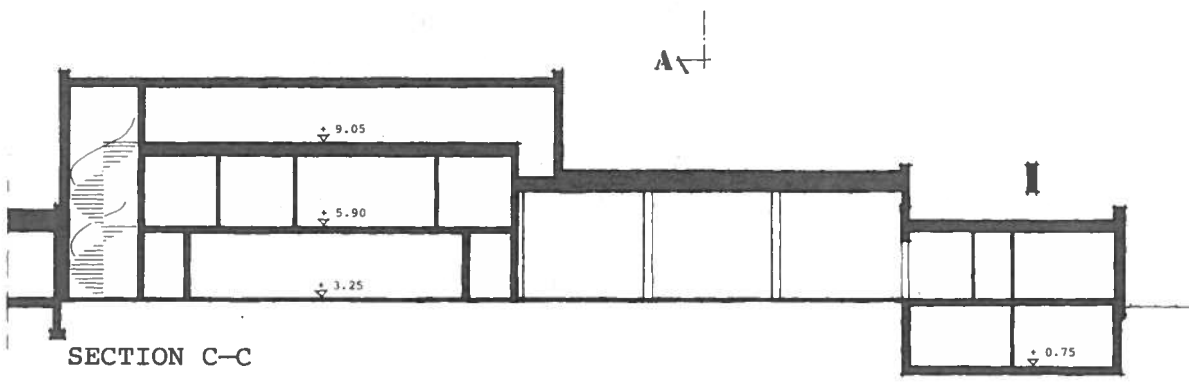
thurfjell



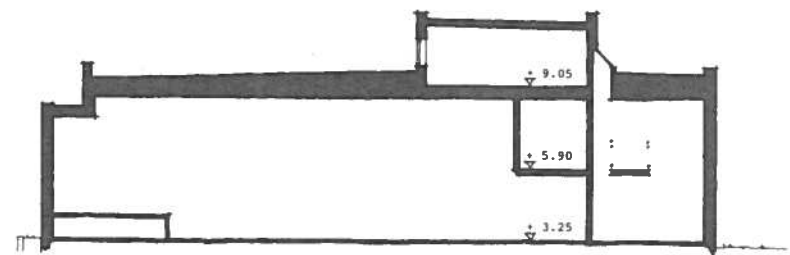
FIRST FLOOR



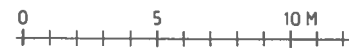
BASEMENT



SECTION C-C



SECTION A-A



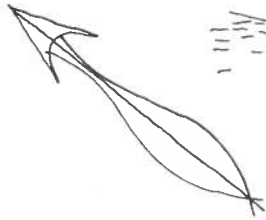
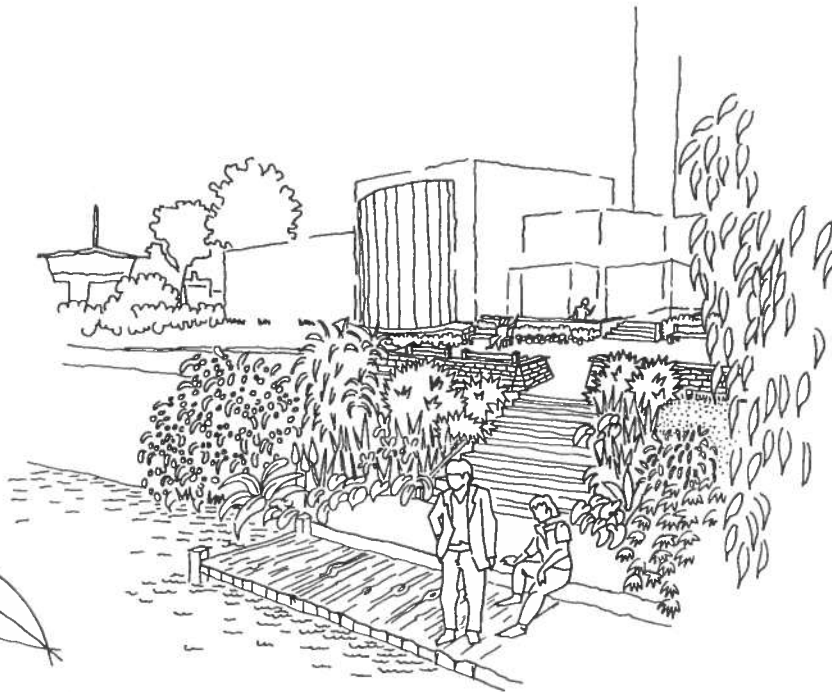
WMU

WORLD MARITIME UNIVERSITY
MALMOE SWEDEN

PLANS AND SECTIONS

20TH MAI 1985 *Thurfiell*

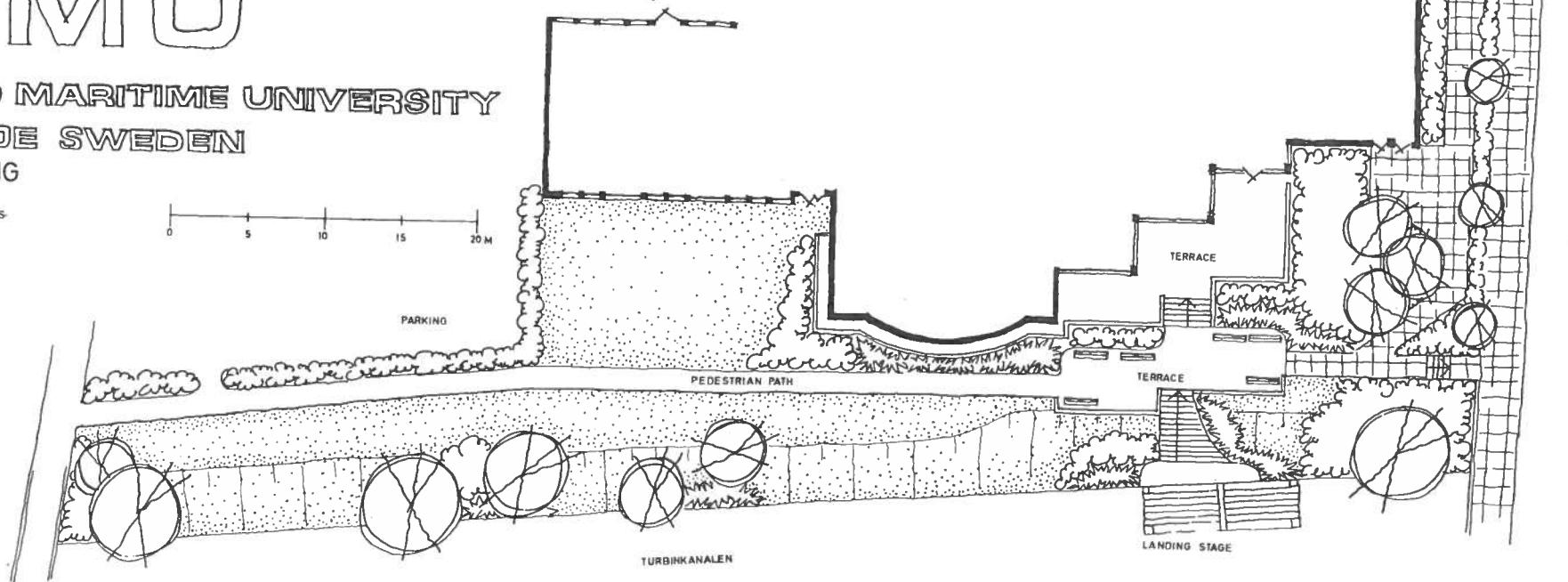
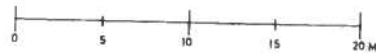
THURFIJELL ARKITEKTTONOR AB
SÅGÅ SKÅTÅRSGÅTAN 6
211 21 MALMÖ TEL. 040770 00 **thurfiell**



WMU

WORLD MARITIME UNIVERSITY
MALMOE SWEDEN
LANDSCAPING

KONSULTERANDE TRADGÅRDS-
OCH LANDSKAPSARKITEKT
LENNART TRULSSON AB
PERSEUS VÄG 3 211 42 MALMÖ
TEL. 040 738 15



WMU - World Maritime University

	Net room area	Net floor area
Plan 0		82,6 m ²
Plan 1		753,9 m ²
Hall including stage, 300 pers	264,0 m ²	
Foyer; open area	168,6 m ²	
café area, 100 pers	175,0 m ²	
Cloakroom, 160 pers	20,5 m ²	
Chair store	20,0 m ²	
Toilettes 7 pers	24,5 m ²	
Kitchen	32,3 m ²	
Plan 2		68,6 m ²
Translator rooms, 3 x 6,8 m ²	20,4 m ²	
Projector room	13,5 m ²	
Plan 3		98,4 m ²
Ventilation plant	91,5 m ²	
		1003,5 m ²
