

5-14-1985

## World Maritime University : Report of the Board of Governors

Secretary General of the International Maritime Organization

Follow this and additional works at: [http://commons.wmu.se/wmu\\_news](http://commons.wmu.se/wmu_news)

---

### Recommended Citation

Secretary General of the International Maritime Organization, "World Maritime University : Report of the Board of Governors" (1985). *WMU in the News*. 208.  
[http://commons.wmu.se/wmu\\_news/208](http://commons.wmu.se/wmu_news/208)

This News Article is brought to you courtesy of Maritime Commons. Open Access items may be downloaded for non-commercial, fair use academic purposes. No items may be hosted on another server or web site without express written permission from the World Maritime University. For more information, please contact [library@wmu.se](mailto:library@wmu.se).



COUNCIL - 54th session  
Agenda item 10(c)

IMO

WORLD MARITIME UNIVERSITY  
REPORT OF THE BOARD OF GOVERNORS

Note by the Secretary-General

1. Article 16(h) of the Charter of the World Maritime University provides that the Board shall report annually through the Secretary-General to the Council on the work of the University. The report of the Board on the working of the University from its inauguration on 4 July 1983 to 31 March 1985 is attached.

2. The Secretary-General wishes to take this opportunity to express his profound gratitude to the distinguished Members of the Board for their wise guidance and highly important contribution to the successful functioning of the University. Their deep knowledge and wide experience have indeed been invaluable to the University in achieving its objectives in the early stages of its existence. The dedication of the highly qualified and competent teaching and administrative staff and the most distinguished contribution of eminent visiting professors as well as the excellence of the students have been of immense help. The Secretary-General wishes to reiterate his sincere thanks to the Government of Sweden, the Municipality of Malmö, UNDP and the many Governments, agencies, organizations and individuals for their generosity, assistance and co-operation.

3. The next session of the Board of Governors is scheduled to be held on 8 and 9 July 1985 and the next report of the Board will be submitted to the Council at its 56th session in June 1986.

Action requested of the Council

4. The Council is invited to take note of the report of the Board of Governors of the World Maritime University and to comment or decide as may be deemed appropriate.

\*\*\*



IMO

Resolution A.852(20) on the  
Guidelines for the Design and Construction of  
Cargo Gear for Bulk Carriers

1. The International Maritime Organization (IMO) is pleased to announce the adoption of the Guidelines for the Design and Construction of Cargo Gear for Bulk Carriers, adopted by the Assembly on 17 November 2004.

2. The Guidelines are intended to provide a uniform standard for the design and construction of cargo gear for bulk carriers, thereby ensuring the safety and security of the cargo and the crew.

3. The Guidelines apply to all bulk carriers of 200 gross tonnage and above, engaged in international trade, and to all cargo gear used on such vessels.

4. The Guidelines are a result of the work of the Working Group on Cargo Gear, established by the Maritime Safety Committee in 1998.

Adopted on 17 November 2004 at the 20th Session of the Assembly

5. The Guidelines are available in English, French, and Spanish. The original text is in English.

REPORT OF THE BOARD OF GOVERNORS  
OF THE WORLD MARITIME UNIVERSITY TO THE COUNCIL

The Members of the Board of Governors of the World Maritime University deem it an honour and privilege to have the responsibility for directing the affairs of this unique maritime institution and to participate in this historic example of genuine international co-operation in pursuit of the universally accepted IMO objective: "safer shipping and cleaner oceans". It has been heartening to see the widespread interest of the international community in having a new institution to offer advanced training for maritime administrators, teachers and technical experts as clearly expressed in the IMO Assembly and IMO Council, as well as in the Governing Council of the United Nations Development Programme, which rapidly led to the establishment of the World Maritime University in Malmö, Sweden in July 1983. This strong endorsement in the inter-governmental bodies during the formative stages of development of the World Maritime University has been carried further with the supportive efforts of so many developed and developing countries, multilateral organizations, maritime organizations and training institutions, companies and individuals interested in the implementation of maritime global standards and the overall improvement of the safety and efficiency of international shipping.

The strength of this exercise in international co-operative action has provided the University with a solid foundation, and during its early life it has had a strong beginning with a creditable record as well as a keen and growing interest on the part of developing countries in sending students there for advanced training. A progress report on the World Maritime University since its inception is given below.

The Charter of the University

The Charter of the University was promulgated by the Secretary-General on 15 June 1983 pursuant to the request and authorization given to him by the Assembly to take all appropriate and necessary steps for the establishment of the World Maritime University. As provided in the Charter the Secretary-General of IMO in accordance with criteria and guidelines approved

by the Council, established a Board of Governors which at present comprises 56 members. Annex 1 gives a list of the Board of Governors.

Inauguration of the University and the First Session of the Board of Governors

The University was inaugurated by His Excellency the Foreign Minister of Sweden as scheduled on 4 July 1983, and was attended, among other personalities, by as many as 30 Members of the Board of Governors, who travelled at their own expense. This yet another demonstration of the great and abiding interest which has been created in the Maritime community as a result of the establishment of the World Maritime University.

During the inauguration meeting the Members of the Board had the opportunity to hold its first meeting and to see the University buildings which had been refurbished by the City of Malmö and which contained up-to-date maritime navigational and communication equipment for training purposes, to meet the students who had come from many developing countries of the world, and also to visit the apartment building provided by the Malmö Municipality as living quarters of the students. The Board of Governors wish to place on record their deep appreciation and gratitude to the authorities of the City of Malmö for the most generous assistance which has been extended by them to the University.

At this session the Board:

- (i) unanimously elected Governor I. Sandvik as Vice-Chairman of the Board as provided under Article 16(i) of the Charter,
- (ii) decided that for some time to come, the full Board of Governors should itself perform the functions of the Executive Council envisaged in Article 19 of the Charter,
- (iii) appointed a Management Body consisting of the Rector, the Vice-Rector, two Professors appointed by the rector in

consultation with the Vice-Rector and the Administrator with the responsibility of over-all supervision and control over the day-to-day functioning of the University,

- (iv) appointed the Academic Council provided for in Article 24 of the Charter consisting of the Rector, the Vice-Rector and all of the full time professors of the University, co-option of additional members being authorized as required,
- (v) recorded its gratitude to the Government of Sweden, the City of Malmö, the Secretary-General and the Council of IMO for the arrangements which had been made with respect to the WMU, and
- (vi) recognized that what the International Maritime Organization had achieved within a short time was truly outstanding and expressed its very sincere and very warm thanks and gratitude.

Board of Governors Meeting - Second Session - June 1984

The second session of the Board of Governors of the World Maritime University was held in Malmö on 18 and 19 June 1984. Thirty-six Governors attended the meeting.

A number of documents were prepared for the Governors meeting including a progress report on the first year of operation of the University and financial documents giving a report on the accounts for 1983, a revised budget for 1984 and budget estimates for 1985, and a statement on the financial resource situation of WMU and its requirements over the medium-term period. These documents were amplified and brought up-to-date as needed by verbal presentation.

The report on the decisions taken by the WMU Board of Governors at its second session is provided here for the information of the Council in Annex 2. Among its main decisions, the Board approved the revised budget for 1984 and the budget for 1985, which will be submitted to the Council separately as provided in the Charter. Having in mind the University's

prospective revenue and expenditure, the Board decided that the present fellowship fee of \$ 10,000 mobilized by sponsoring authorities should be raised to \$ 12,000 per student per year, with the increase applicable to new entrants for the 1985 class. It was decided that admissions should not be restricted to developing countries and that about 10% of the total intake of new students each year could come from developed countries; for them a fellowship of \$ 25,000 per annum is to be charged to approximate the estimated full economic cost per student of funding the University. The Governors decided that WMU should develop a programme of short courses utilizing training facilities in various regions of the world. The Board considered the question of periodic assessments, external and internal "as soon as practicable after an initial period to allow the University to begin to function normally", and it set up a group to look into future accreditation or other suitable recognition of the University's degrees. The Governors decided to establish a Capital Fund with a goal of \$ 25,000,000 in assets. It also recommended that organizations such as the Friends of the World Maritime University in the USA should be established in all IMO Member States.

The third meeting of the WMU Board of Governors will be held in Malmö on 8 and 9 July 1985. The University intends to hold its first convocation for the award of degrees to successful students of the 1983 class during that period.

#### Student enrolment at the University

From the very outset sponsoring developing countries showed a strong interest in the World Maritime University. The initial class at WMU which entered in July 1983 numbered 72 students from 40 countries. The developing countries continued to show a keen interest in the University and the second class, whose academic year began in February 1984, numbered 65 students and brought the total number of sponsoring developing countries to 59. The interest on the part of the developing countries in sending students has further strengthened and the 1985 class beginning in March consisting of 83 students is the largest so far. It is noteworthy that about 15 new countries who have not sent students thus far have sponsored students for study at the WMU in 1985.

At present, that is on 31 March, 1985, 212 students from as many as 74 countries are studying at the University.

High quality of students

Perhaps the greatest strength of the University is the excellence of its student body. The general evaluation by Resident and Visiting Professors, as well as by organizations and persons visited by WMU students in field trips and on-the-job training, clearly shows a high quality student body approaching their work at the University with seriousness and diligence.

Annex 3 to this report gives information on the 1983, 1984 and 1985 classes by student names, country and region, and also indicates the course of study being followed by each student. A summary of the regional distribution is as follows:

	<u>Number of Countries</u>	<u>Number of students</u>		
		<u>1983 class</u>	<u>1984 class</u>	<u>1985 class</u>
Africa	19	25	23	29
Arab States	8	11	6	19
Asia and Pacific	13	12	19	16
Latin America and Caribbean	16	18	15	17
Europe	<u>3</u>	<u>6</u>	<u>2</u>	<u>2</u>
TOTAL	<u>59</u>	<u>72</u>	<u>65</u>	<u>83</u>

Academic developments at the World Maritime University since July 1983  
Resident faculty and administrative staff

A resident faculty was well in place at the University at the outset. During the first semester of its operation the resident faculty consisted of the Rector, (from Sweden), the Vice-Rector, (from the Federal Republic of Germany), and six other resident Professors (from Egypt, India, Japan, Norway, United Kingdom and the United States of America). Early in 1984 a Professor (from France) was added to the resident faculty in the field of shipping company management bringing the total number to nine. Because of



the additional workload with the start of the 1985 class it was decided to add three junior members to the resident faculty as lecturers. Annex 4 gives a list of the Resident Professors and Lecturers at WMU.

The full-time staff of the University comprises in addition to the aforesaid resident faculty, administrative and general service staff. An organizational chart as effective at present is given in Annex 5.

For strengthening and streamlining its operations, the University has established a Students' Admission and Registration Board, a Personnel Selection Board and a Library and Publications Board. There is also a Students' Council elected by the students.

#### Visiting Professors

Supplementary to the resident faculty, the University has had a highly successful programme of education by Visiting Professors. This involves the giving of lectures at the University by specialists who are prominent in a number of maritime fields and whose cost to the University is only for their transport to and from the University and for a per diem while they are at the University. Normally the Visiting Professors reside at the student hostel in Malmö where some apartments are reserved for their use. This has proved beneficial both to students and to the Professors.

The roster of persons from which visiting Professors are invited to give lectures at the University now totals well over 150 from countries all over the world. In the first semester, July-December 1983, 11 Visiting Professors gave lectures at WMU, as well as several lectures by senior IMO officials. In the year 1984, 39 Visiting Professors came from Australia, Canada, China, Denmark, Egypt, France, German Democratic Republic, Greece, Federal Republic of Germany, India, the Netherlands, Poland, Sweden, Union of Soviet Socialist Republics, United Kingdom, United States of America and Yugoslavia. Experts came also from Hong Kong.

### Field trips and on-the-job training

Beginning in 1983 but especially in 1984, a particular effort was made to provide relevant, practical learning opportunities for the students at WMU through field trips and on-the-job training. For students in both the 1983 and 1984 classes the field trips involved visits ranging from 1-13 days, to a number of places in Denmark, Finland, Federal Republic of Germany, the Netherlands, Norway, Sweden and the United Kingdom.

The University concentrates its programme of on-the-job training in the third semester of a two-year programme and has attempted to arrange specially designed visits to meet the particular interests and qualifications of a student or group of students. This has meant that during the second half of 1984 the 1983 class spent a good part of their time away from Malmö. For example the four Nordic countries - Denmark, Finland, Norway and Sweden - each took all of the students in the Maritime Safety Administration course for about one month each for various on-the-job training assignments. Students from the other classes similarly went to a number of countries in Europe and the United States of America. Visits to other countries are being arranged.

Success of the programme has been made possible by the excellent co-operation shown by host country governments and organizations, and the Board of Governors wishes to express its sincere gratitude for the interest shown and the great effort which has been made to make these field trips and on-the-job training so valuable to the students at WMU.

### Intensive English language programme

When the University first started it was realized that special English language courses would have to be given at WMU for students who needed strengthening in English, the language of instruction at the University. For the first class which entered in July 1983 only a few weeks were available for intensive English language instruction during the period of the regular academic programme. In 1984 the intensive English language programme was further strengthened, including the installation early in the year of a

language laboratory with equipment purchased under the Norwegian grant to the University. In 1984 an intensive course was given starting in early January, eight weeks prior to the classes of regular maritime courses which began early in March 1984. For the 1985 class the period was lengthened to a ten-week intensive English course beginning in January 1985, or an 18-week course which started in November 1984 for students who had further to go to improve their proficiency in English.

#### Equipment and Library

Since the University started in July 1983 the University has received gifts of equipment which have been installed for instructional purposes at the University and to some extent for the floating laboratory maintained by WMU. By the end of 1984 total grants of equipment to the University from various manufacturers all over the world amounted to roughly US\$ 800,000 in value. This has provided the opportunity to study the operation of modern bridge and engine equipment as well as allowing Maritime Safety Administration students to undertake practical equipment surveys and it has also strengthened computer training.

A number of gifts were also made for the University's Library. Also the University's Library was importantly strengthened in 1984 by the addition of a full-time professional Librarian experienced and conversant with maritime subjects.

#### University and residential buildings

In the Spring of 1984 the City of Malmö made available the whole of the building for the University after some sections of Lund University moved out and following the construction by the City of a new building to accommodate the nautical school which had been occupying part of the University's building. This provided much needed additional space for lecture halls, faculty offices, administrative staff, the Language Laboratory and a snack bar for students. At present the University does not have any room large enough to accommodate all students for common lectures or other functions. A

University hall with a seating capacity of about 300 persons is needed. This matter will receive the attention of the Board at its next meeting.

Towards the end of 1984 the University discussed with the Malmö Municipal authorities the need for additional residential quarters for the students because during the first half of 1985 extra housing will be required to accommodate the larger 1985 class as well as provide for the continued attendance of the 1984 and 1983 classes (the latter ending their stay in Malmö early in July 1985). This will be the only time in which three classes will be present all at once, which is attributable to the fact that the initial class will be at the University from mid-1983 to mid-1985 whereas all subsequent classes will be on a calendar year basis with academic years from February to December.

WMU Seminar for Heads of National and Regional Maritime Training Institutions in Developing Countries

An important event took place at the University in September 1984 when the WMU held a seminar in Malmö for Heads of Regional and National Maritime Training Institutions in Developing Countries. This was a significant step towards the realization of the University as the apex of a worldwide system of maritime training institutions. It was well attended and provided a useful exchange between the University and the other institutions. This new dialogue provided a better understanding of WMU and its operations on the part of the others and also how the University on its part could best serve the other training institutions; a strengthening of ties between WMU and the other organizations or new links with them; and consideration of future co-operation between the University and other constituent parts of a worldwide system of maritime training.

The Seminar took place from 17 through 25 September 1984. In the first two and a half days the Third International Conference on Maritime Education and Training was held by the International Maritime Lecturers' Association (IMLA) in co-operation with the World Maritime University. The IMLA Conference was attended by a number of maritime educators and lecturers from Europe, North America, Latin America, Africa, Asia and the Middle East.

Immediately following the IMLA Conference the WMU held its Seminar for Heads of National and Regional Maritime Training Institutions in Developing Countries. Altogether 182 persons attended the IMLA Conference and WMU Seminar; 52 from national and regional maritime training institutions in developing countries and 130 more for the IMLA Conference. In addition, 20 WMU students in the Maritime Education courses attended both.

WMU Seminar for Maritime Administration and Safety Administration Senior Officials in Developing Countries

Similar to strengthening and establishing links with the maritime training institutions in developing countries with its Seminar in September, the University intends to hold a seminar in August 1985 in Malmö for senior officials in maritime administration and maritime safety in the developing countries. Thus with these two Seminars the University will bring together for fruitful discussion at the University the principal "user" organizations of WMU's activities.

Financial situation of the University

During its early years the World Maritime University has had about one half of its budgeted expenditure met from income provided on a recurrent basis and the remaining half was received in an ad hoc way. Assured financing from year to year has come from Sweden, Norway and the United Nations Development Programme, and the Commonwealth Secretariat has a standing agreement to provide financing for five new students enrolled each year for two-year courses. The remaining revenue for the University has come primarily from the fellowship income required for each student, which for the first two classes amounted to \$ 10,000 per year, and was raised for new entrants to \$ 12,000 per year in 1985. Also certain gifts were made to the University in the form of equipment, books and teaching materials which covered the cost of items which otherwise would have required budgetary expenditure by the University itself.

The Board of Governors is seriously concerned about the uncertainty which arises from dependence upon income arising in an ad hoc fashion. Reducing this uncertainty can be accomplished both by direct contributions to the

University's budget as is now provided by Sweden, Norway and the UNDP, as well as by assured financing of fellowships from year to year as is the case with the Commonwealth Secretariat. Assured support on a recurrent basis will contribute to a sounder basis for operations at the University and to greater certainty in planning for the future.

The Board of Governors recognizes that despite the availability of only one half of its income through recurrent cost support, the University has managed satisfactorily to live within its means as will be explained in the next section, and to make a satisfactory beginning of its operations. At the same time the Governors wish to stress that all means should be found to increase the level of assured recurrent costs financing for the University. Looking into the longer term future, the Board of Governors decided to establish a Capital Fund whose investments are providing earnings for the University's operations, which resulted in a widespread appeal by the Secretary-General last September. However, it will take some time no doubt before the Capital Fund can be of sufficiently large size to make a material difference in allowing the University greater self-reliance through this means. Therefore the Governors believe that in future years other methods also must be found to reduce the University's dependence to meet its costs on the uncertainty and variability of ad hoc income that it learns about only as the immediate future unfolds. At the same time the Board of Governors notes with much appreciation the very generous help now being given in this form to the University by Sweden, Norway and the UNDP. The Board also wishes to thank donor countries and organizations for the fellowship assistance they have provided to allow students from needy countries to attend WMU and at the same time to encourage a greater participation on the part of donors in financing WMU fellowships for worthy students from developing countries.

Income and Expenditure of WMU  
July - December 1983

In the first six months of its operations, July-December 1983, WMU received recurrent cost support to its budget of \$ 500,000 from Sweden, \$ 350,000 from the United Nations Development Programme and \$ 200,000 from Norway (including \$ 50,000 for five fellowships). Fellowship income attributable to that six-month period, i.e. the \$ 10,000 required to be paid

to the University for each student per year, amounted to \$ 310,000. Together with miscellaneous income of \$ 30,000, WMU had an income of \$ 1,390,000 in the six-month period, July-December 1983.

During the same six-month period total expenditure amounted to \$ 1,171,000. Thus the University realized a surplus of \$ 219,000 in the first six months of its operation.

#### 1984

In 1984 the contribution of the Government of Sweden amounted to \$ 1,000,000 as pledged, with the next largest contributor was the United Nations Development Programme which gave annual support to the University's budget in the amount of \$ 700,000. In 1984 Norway increased its contribution to \$ 350,000 from \$ 200,000 in 1983 (including \$ 50,000 for fellowships). Thus Sweden, UNDP and Norway together provided budgetary support to the University totalling \$ 2,050,000. The bulk of the University's other income in 1984 derived from the \$ 10,000 fellowships required per year for each student. This fellowship income amounted to \$ 1,300,000 in 1984. Together with about \$ 50,000 in miscellaneous income, total revenue of WMU was about \$ 3,400,000.

Total expenditure of the University amounted to about SEK 27,500,000 or about US\$ 3,330,000 (calculated at the exchange rate of SEK 8.25 per US\$, which was the weighted average exchange rate for conversions of dollar income into kronor during the course of 1984). Thus in 1984 the University achieved a small surplus of about \$ 70,000.

#### 1985 Estimates

Income for 1985 again will show recurrent costs support of \$ 1,000,000 from Sweden, \$ 700,000 from UNDP and \$ 350,000 from Norway (including \$ 78,000 made available for fellowship support). With fellowship income (other than Norway) of about \$ 1,900,000 and miscellaneous income of about \$ 50,000, total income in 1985 is estimated at approximately \$ 4,000,000. A revised budget for 1985, reflecting increased expenditures for a large 1985 class and

resulting needs for additional academic staff and for student costs as well as an assumed exchange rate of SEK 8.5 per dollar, gives a total expenditure estimate of \$ 4,025,000. This would indicate a near balance with expenditure in 1985 again on the basis of estimates drawn up in March 1985.

#### Fellowship assistance

In 1983 fellowship support for 24 students, or US\$ 240,000, was provided by the Commonwealth Secretariat, Denmark, Greece, Italy and Norway. In 1984 fellowship assistance of the Commonwealth Secretariat amounted to US\$ 100,000 and an additional US\$ 310,000 was made available to the Secretary-General of IMO by Denmark, France, Italy and Norway for financing the WMU fellowships of US\$ 10,000 a year per student. In addition, in 1984 bilateral assistance was given by the Federal Republic of Germany for the financing of 21 students for US\$ 210,000, by Sweden for two students and by the United Kingdom for one student. Thus the total fellowship support provided by donors to enable students from developing countries to attend the University in 1984 amounted to US\$ 650,000, or fellowships for 65 students. If additional fellowship money had been available probably eight to ten more students could have been admitted for study at WMU in 1984.

#### 1985

In 1985 the largest amount of fellowship assistance will again be provided under bilateral arrangements of the Federal Republic of Germany with developing countries. The FRG total in that year will amount to US\$ 390,000, covering 21 students in the 1984 class returning in 1985 at US\$ 10,000 each and 15 new students enrolled in the 1985 class at US\$ 12,000 per student. The Commonwealth Secretariat will contribute US\$ 110,000 for WMU fellowships, US\$ 50,000 for the second year of five 1984 class students and US\$ 60,000 for five new students entering in 1985. Fellowship assistance from Norway in 1985 is expected to amount to US\$ 78,000 out of the US\$ 350,000 annual grant made available through the IMO in support of the World Maritime University. France will provide another US\$ 50,000 in 1985 to finance the second year for the five students who entered the 1984 class. Denmark fellowship assistance in 1985 will amount to US\$ 48,000 for four new students in the 1985 class.



Fellowship support in 1985 will also be given through bilateral aid from the United Kingdom (British Council) and Sweden (SIDA). As in the previous year, more students could have enrolled in the 1985 class if more fellowship assistance had been provided.

Annex 6 gives information about financial and fellowship assistance given or pledged to-date in support of the World Maritime University.

#### Other support to the University

The University also received very useful non-financial support since the start of its operations. This "in kind" assistance took a number of different forms. As noted above, the University received a considerable amount of equipment from a number of manufacturers around the world and contributions were also made in the form of instructional materials. Books were provided for the library from several sources, prominent among them being a gift worth £ 2,000 from the Marine Society of the United Kingdom. The Friends of the World Maritime University, USA financed the purchase of a vehicle for the University as well as sent books and provided the services of a consultant to assist in the development of the University Library. Very important also was the assistance given by a number of countries and organizations in absorbing some of the costs involved in the visits of students for field trips and on-the-job training.

The Governors welcome the excellent work being done by the Friends of the WMU in the United States of America in fostering interest in the University and in providing various kinds of support and they hope very much that similar bodies can be set up in other countries to provide support to the University.

#### Capital Fund Appeal by the Secretary-General

Acting on the mandate given to him by the Board of Governors, the Secretary-General launched a worldwide appeal for contributions to the Capital Fund of the World Maritime University on the occasion of World Maritime Day in September 1984. The subject of World Maritime Day 1984 was "Global Co-operation for Training of Maritime Personnel" and there was a special focus

on the World Maritime University both at IMO Headquarters in London and throughout the world. The appeal for donations to the WMU Capital Fund was included in his message on World Maritime Day 1984. In addition to this statement which was widely disseminated, the Secretary-General spared no effort to carry the message and sent letters of appeal for contributions to the Capital Fund to many organizations and companies which have an interest in maritime affairs. As of 31 March 1985 total contributions to the Capital Fund amounting to US\$ 170,899 have been received from governments, organizations, companies and individuals and an additional US\$ 52,000 was pledged to the Capital Fund. Annex 7 lists the donations received or promised so far.

### Conclusion

The World Maritime University has come a long way in the brief period since July 1983. The University has just admitted its third batch of students in March 1985 and looks forward within a few months to the successful completion of studies by the first batch of students who entered in July 1983. There is now a well established resident faculty, enriched through an effective scheme of Visiting Professors, a successful programme of field trips and on-the-job training, a strengthened intensive English language programme, a considerable amount of up-to-date donated equipment installed for instructional purposes, the building up of a good Library and perhaps the most important of all, the diligent involvement of an excellent student body sponsored by a vast and ever growing number of countries who see the advantages of the advanced training offered at WMU. The Board of Governors can reasonably state that in this early, first phase of its existence, the World Maritime University has lived up to its promise.

The Board is extremely pleased to inform the Council that the highly esteemed University of Wales which has a globally renowned maritime faculty, has just announced its recognition of the Master of Science Degree of the World Maritime University for admission to its Ph.D. class.

The accomplishments of the University no doubt can be attributed to the excellence of the work of the University's academic and administrative staff and to the seriousness and diligence of its students, but of crucial

importance has been the contribution of those who through financial support and in other ways have made it possible for the World Maritime University to achieve as much as it has in such a brief period of time. In order for the University to build on this very good start and to have a future of solid growth and excellent performance, the international co-operative effort which has sustained the University must be continued and enhanced in the future.

What is needed now is for the strong beginning of the World Maritime University to lead readily into a secure future so as to provide the University and indeed the international community with an assured basis for stability and effectiveness in its operations and for sound planning for its future. The Board of Governors is hopeful that the many and diverse efforts which have brought about this remarkable achievement in international co-operation, the establishment of the World Maritime University and the success in its early years, can be continued and expanded. This calls for international support in a number of different ways.

The Board now has the honour to invite the Council of the International Maritime Organization to consider and to extend its strong support to the following suggestions which are being made with a view to strengthening, improving and stabilizing the operation of the World Maritime University:

(i) Appeal to the developed countries:

The Board re-iterates its gratitude to all developed maritime countries who have, in diverse ways, already given invaluable support to the World Maritime University. It is essential, however, that this support is enhanced and is provided in future on a recurring basis. The Board is aware that all developed maritime countries have a generous programme of technical assistance to developing countries and as a part of assistance funds are provided for maritime programmes. Considering that the most effective way to ensure the observance of IMO's global technical standards for maritime safety and pollution prevention, is to enable developing countries to train their nationals as maritime specialists, developed countries may be invited to allocate a small part of

their development assistance funds to the World Maritime University. Such assistance may be provided in the form of (a) an appropriate number of fellowships each of the value of \$ 12,000 per annum valid for two years (b) an appropriate annual contribution to the funds of the University to meet expenditure not fully covered by fellowships and other donations and (c) an appropriate contribution to the Capital Fund of the University. In this connection the Board invites attention to the provisions of Article XI of the International Convention on Standards of Training, Certificates and Watchkeeping for Seafarers, 1978, quoted below:

"(1) Parties to the Convention shall promote, in consultation with, and with the assistance of, the Organization, support for those Parties which request technical assistance for:

- (a) training of administrative and technical personnel;
- (b) establishment of institutions for the training of seafarers;
- (c) supply of equipment and facilities for training institutions;
- (d) development of adequate training programmes, including practical training on sea-going ships; and
- (e) facilitation of other measures and arrangements to enhance the qualifications of seafarers;

preferably on a national, sub-regional or regional basis, to further the aims and purposes of the Convention, taking into account the special needs of developing countries in this regard.

(2) On its part, the Organization shall pursue the aforesaid efforts, as appropriate, in consultations or association with other international organizations, particularly the International Labour Organization."

(ii) Appeal to developing countries:

The developing countries have clearly demonstrated their recognition of the value of the WMU by the significant numbers and

high quality of the students they have sponsored. Noting that for well into the future there will continue to be a great need for advanced training for maritime personnel in the developing countries, the Board of Governors invites the Council to urge developing countries to prepare carefully a medium-term plan for training such personnel in each of the following categories:

Teachers in maritime training institutions;  
Surveyors, Examiners and Maritime Safety Administrators;  
General Maritime Administrators;  
Technical Managers of Shipping Companies.

The Board wishes to emphasize that specific attention needs to be given to the training of personnel for each of these categories. With the identification of their needs for such key personnel, sponsoring developing countries then can arrange suitable programmes for continuing their participation in the world of the World Maritime University. A crucial element in their effective utilization of WMU is arranging for the financing of the fellowships to be mobilized for students to attend the University. Therefore accompanying the manpower planning noted above, there should be the financial planning to cover the costs of the fellowships through use of funds provided under UNDP Country Programmes or bilateral arrangements for financing by donor governments and other organizations.

(iii) Appeal to UNDP

The Board of Governors recognizes fully the crucial role which has been played by the UNDP in the internationalizing effort to establish the World Maritime University and in providing a stable source of income to cover recurrent costs in the initial phase of its work. The Governors are also most grateful to the worldwide UNDP system which has helped so much in many administrative ways to liaise with governments about prospective students and arranged for their transport to the University. The University counts on this

co-operation in the future. The Board of Governors also would like to emphasize that the financial support given to the University's budget in financing recurrent costs will be a crucial element in providing assured stability of income in future years. Therefore the Board invites the Associate Administrator of UNDP kindly to give special attention to the need for the enhancement of UNDP financial support to WMU. This would be in full conformity with the policy of the United Nations Development Programme to give priority to the training requirements of developing countries. The World Maritime University has already established itself as an important and effective global centre for the transfer of high-level maritime technology to the developing countries and for the training of their personnel.

The Governors, while expressing sincere gratitude for the contributions made thus far to the Capital Fund of the WMU, call upon governments, organizations, donor agencies, Foundations, Trusts, companies and individuals to contribute to the Capital Fund so that its modest size can grow to a much larger figure to yield significant earnings which could be made available as support to WMU.

The achievements of the University so far are indeed impressive. This augurs well for the future of this unique institution, a symbol of global peaceful co-operation in the maritime sector. The Governors are confident that the benefits of the activities of the University will be fully evident when its graduates return home to become shipping policy makers, maritime administrators, maritime surveyors and inspectors, teachers in training institutions and technical managers and start contributing effectively to the implementation of global maritime standards.

On behalf of the Board of Governors



(C. P. SRIVASTAVA)  
Chancellor

\*\*\*

The first part of the document discusses the importance of maintaining accurate records of all transactions. It emphasizes that every entry should be supported by a valid receipt or invoice. This ensures transparency and allows for easy verification of the data. The second part of the document provides a detailed breakdown of the financial data for the quarter. It includes a table showing the revenue generated from various sources, as well as the associated costs and expenses. The final part of the document concludes with a summary of the overall financial performance and provides recommendations for future actions to improve efficiency and profitability.

The following table summarizes the key financial metrics for the quarter:

Metric	Q1 2024	Q2 2024	Q3 2024
Total Revenue	\$1,200,000	\$1,350,000	\$1,400,000
Total Expenses	\$800,000	\$850,000	\$900,000
Net Profit	\$400,000	\$500,000	\$500,000

The data indicates a steady increase in revenue over the three quarters, while expenses have remained relatively stable. This suggests that the company is effectively managing its costs while growing its sales. Moving forward, it is recommended that the company continue to focus on expanding its market reach and optimizing its operational processes to further enhance its financial performance.

In conclusion, the financial performance of the company for the quarter has been strong. The consistent growth in revenue and the ability to maintain low expenses are key factors contributing to the positive net profit. The management team is committed to maintaining this momentum and ensuring long-term success. The following actions are proposed for the next quarter:

- Implement new marketing strategies to attract more customers.
- Review and optimize the supply chain to reduce costs.
- Invest in research and development to create new products.

These initiatives are expected to drive further growth and improve the company's overall financial health. The management team will continue to monitor the results and make adjustments as needed to stay on track with the company's strategic goals.

ANNEX 1WORLD MARITIME UNIVERSITYMEMBERS OF THE BOARD OF GOVERNORS

	<u>Chancellor (Chairman):</u> Mr. C.P. Srivastava International Maritime Organization
	<u>Vice-Chairman:</u>
NORWAY	Mr. I. Sandvik Director-General of Shipping and Navigation The Norwegian Maritime Directorate
ALGERIA	M. El-Hadj Sami Directeur de l'Institut Supérieur Maritime
AUSTRALIA	Captain D.M. Waters Principal Australian Maritime College Tasmania
BANGLADESH	Mr. A.K.M. Kamaluddin Chowdhury Secretary Ports, Shipping and I.W.T. Division Ministry of Communications
BRAZIL	Captain Isaac Benchimol Counsellor for Maritime Affairs, and Permanent Representative to IMO Embassy of Brazil London
BULGARIA	Mr. Bojidar Kirilov Floroshky Director, Bulgarian Shipping Register
CANADA	Mr. William A. O'Neil President The St. Lawrence Seaway Authority
CHILE	Sr. D. Guillermo S. Santa-Cruz Representante permanente de Chile ante la OMI Embajada de Chile London



CHINA	Mr. Chen Zhuwei Vice-President Dalian Marine College
COLOMBIA	Contralmirante G. Angel-Mejia Director General Maritimo y Portuario Edificio CAN Ministeria de Defensa
DENMARK	Mr. Tage Madsen Under-Secretary Ministry of Industry
EGYPT	H.E. Dr. Gamal El-Din A. Moukhtar Director-General Maritime Transport Academy Alexandria
FRANCE	Professeur Pierre Bauchet Professeur à l'Université Vice-Président du Conseil Supérieur de la Marine Marchande
GERMAN DEMOCRATIC REPUBLIC	Professor Dr. E. Moeck Rector of Nautical College of GDR
GERMANY, FEDERAL REPUBLIC OF	Dr. Gerhard Breuer Deputy Director-General of the Shipping Department of the Federal Ministry of Transport (retired)
GHANA	Commodore S.G. Obimpeh Chairman of Mobilising Committee of Manpower and Member of Board of Governors of Regional Maritime Academy, Accra
GREECE	Mr. M.A. Baroutakis Director Mariteco Ltd. (Consulting Engineers, Naval Architects and Marine Surveyors) Piraeus
HONG KONG	Mr. Frank Chao Chairman, Hong Kong Merchant Navy Training Board President, Wah Kwong and Co. (H.K.) Ltd
INDIA	Mrs. Sumati Morarjee Chairman Scindia Steam Navigation Co. Ltd. Bombay

ITALY	Dr. Gaudenzio Pierantozzi Vice Avvocato Generale dello Stato
IVORY COAST	M. Souleymane Sogodogo Directeur général du Groupe des Ecoles de la Marine Marchande d'Abidjan
JAMAICA	Mr. Erwin Angus, C.D. Executive Director Jamaica Merchant Marine Ltd., and Chairman Jamaica Marine Training Institute
JAPAN	Professor Hatsuzo Tani President Tokyo University of Mercantile Marine
REPUBLIC OF KOREA	Dr. Joon-Soo Lee Chairman Korea Merchant Marine Training Institute
KUWAIT	His Excellency Dr. Ibrahim Makki Ibrahim Director General Ports Public Authority
LEBANON	Mr. Georges Achkar Directeur Institut Superieur des Sciences Maritimes
LIBERIA	The Honourable Philip T. Bowen Commissioner of Maritime Affairs Ministry of Finance
MOZAMBIQUE	Mr. Oscar Jonassen Borges de Carvalho Assistant National Director National Board for Maritime and River Transport Ministerio dos Portos e Transportes de Superficie
NIGERIA	His Excellency Alhaji I.R. Abukabar Permanent Secretary Federal Ministry of Transport
PAKISTAN	Mr. Mustafa K. Gokal Chairman Gulf Shipping Lines Limited
PHILIPPINES	Mr. Miguel A. Magsaysay Chairman Filipino Shipowners' Association

POLAND	Dr. Aleksander Walczak Rector Merchant Navy Academy Szczecin
SAUDI ARABIA	H.E. Eng. A. Yousif Al Turki Deputy Minister of Communications for Transport Affairs Ministry of Communications
SPAIN	Capitan Francisco Joaquin Montero Llacer Jefe de los Servicios de Asuntos Maritimos, Formacion y Pesca Junta de Andalucia Sevilla
SWEDEN	Mr. A. Forsse Director-General Swedish International Development Authority
SWEDEN (City of Malmö)	Mr. Nils Yngvesson Chairman Executive Board, Malmö
USSR	Mr. H.A. Davydov Rector Leningrad Higher Marine Engineering School
UNITED ARAB EMIRATES	H.E. Dr. Abdul Wahab Al Diwani Director-General Arab Maritime Transport Academy Sharjah
UNITED KINGDOM	Mr. J.K. Rice-Oxley, CBE Chairman United Kingdom Merchant Navy Training Board
USA	Mr. Edwin Murray Hood Director of Government Relations National Steel and Shipbuilding Company Washington, D.C.
VENEZUELA	Capitan Marcel Antonorsi Ministerio Transporte y Comunicaciones Direccion de Transportes Acuatico
YUGOSLAVIA	Dr. Predrag Stankovic Professor Faculty of Maritime and Transport Studies Rijeka

COMMONWEALTH  
SECRETARIAT

His Excellency Mr. S.S. Ramphal, A.C.,  
Kt., C.M.G., Q.C.  
Commonwealth Secretary-General  
Commonwealth Secretariat  
London

MINISTERIAL CONFERENCE  
OF WEST AND CENTRAL  
AFRICAN STATES ON  
MARITIME TRANSPORT

Dr. J.S. Walla  
Secrétaire général de la Conférence  
Ministérielle des Etats de l'Afrique  
de l'Ouest et du Centre sur les  
Transports Maritimes

FEDERATION OF ASEAN  
SHIPOWNERS' ASSOCIATIONS

Mr. Lua Cheng Eng  
Chairman  
Federation of ASEAN Shipowners'  
Associations (FASA)  
Singapore

INTERNATIONAL CHAMBER  
OF SHIPPING

Mr. J.C.S. Horrocks  
Secretary-General  
International Chamber of Shipping  
London

INTERNATIONAL TRANSPORT  
FEDERATION

Mr. Knud Mols Sorensen  
International Transport Federation  
Copenhagen,  
Denmark

## UNDP

Mr. W.T. Mashler  
c/o UNDP, New York

## UNITAR

Mr. M. Doo-Kingue  
Executive Director  
United Nations Institute for  
Training and Research

Ex officio members

## ILO

Director-General  
International Labour Organization

## UNESCO

Director-General  
United Nations Educational, Scientific  
and Cultural Organization

## UNDP

Administrator  
United Nations Development Programme

## IMO

Secretary-General  
International Maritime Organization

UNCTAD

Secretary-General

United Nations Conference on Trade  
and Development

Chairman  
Maritime Safety Committee

Mr. E. Jansen  
Deputy Director-General of Shipping and  
Navigation  
Norwegian Maritime Directorate

Chairman  
Marine Environment  
Protection Committee

Dr. J. Cowley  
Surveyor General  
Marine Directorate  
Department of Transport  
United Kingdom

\*\*\*

ANNEX 2REPORT ON THE DECISIONS TAKEN BY THE BOARD OF GOVERNORS OF THE  
WORLD MARITIME UNIVERSITY AT ITS SECOND SESSION

1. The Board of Governors of the World Maritime University held its second session in Malmö on 18 and 19 June 1984, under the Chairmanship of Mr. C. P. Srivastava, Chancellor of the World Maritime University and Secretary-General of the International Maritime Organization.

2. The list of participants is annexed.

3. The Board of Governors approved the provisional agenda for the session contained in document WMU 2/1. The following substantive documents were before the Board of Governors for its consideration:

- WMU 2/2 - Progress report on first year of operation of the University
- WMU 2/3 - Report of the Academic Council of the University
- WMU 2/4 - Adoption of Rules of Procedure of the Board
- WMU 2/5 - Budget of the University
- WMU 2/6 - Presentation of accounts for 1983
- WMU 2/7 - Presentation of the budget with report of the Board to the Council of the International Maritime Organization
- WMU 2/8 - Financial resource situation and requirements over medium term period
- WMU 2/9 - Provisional Financial Rules of the University
- WMU 2/10 - Staff Regulations and Rules.

4. The following decisions were arrived at by consensus:-

a) The establishment of the Executive Body within the University, as well as its duties and responsibilities were duly noted and approved. This body was, however, re-named as the Management Body.

b) The World Maritime University will be the centre of a network of training institutions, and the forthcoming seminar to be held from 17 to 28 September at the University for heads of training institutions will be an important step in strengthening this network.

c) There should be periodic assessments, the first such assessment to be organized as soon as practicable after an initial period to allow the University to begin to function normally. This external assessment should be done on a very careful basis with a small group of distinguished people who will be asked to produce a report for the Board of Governors. Such an external assessment will be complementary to an internal assessment which will be undertaken by two or three Members of the Board at the invitation of the Chancellor.

d) A limited number of students from developed countries will in future be allowed to join the University. This could be about 10% of the total intake, which in numerical terms would be seven or eight students per year. Such students will pay the full economic cost amounting to about US\$ 25,000 per annum. The presence of some students from developed countries will enhance the truly global character of the World Maritime University, will benefit the students from developing countries through contacts with their counterparts from developed maritime countries, and should be beneficial to the world maritime community as a whole.

e) English language training will be still further improved, either through further work by students before leaving their own countries, or through earlier arrival at the University before starting the substantive part of the training programme, as required.

f) The value of the equipment donated to the University will be calculated so that it can be taken into account by, inter-alia, the host country in calculating the proportionate share of the University's costs represented by their contribution.

g) The matter of accreditation or other suitable recognition of the University's degrees by other educational institutions throughout the world

will be pursued by a group consisting of the Chancellor, Governor Al Diwani, Governor Bauchet, Governor Moukhtar and Governor Tani, and this group will submit a report to the Board in due course.

h) The Chancellor/Secretary-General will pursue discussions with the ILO in response to Governor Nilssen's offer of ILO co-operation with respect to implementing the training modules in a number of areas of special interest to the ILO, including labour standards, crew health and sanitation, human factors and accidents, etc.

i) The progress achieved by the University to date through the work of the Rector, the Vice-Rector, the Professors and the staff was noted with satisfaction.

j) The long-range programme of work of the University should, in due course, include research and development of model training courses as a help to developing countries.

k) The University should develop a programme of short courses utilizing facilities in various regions. Modules for such courses should be prepared at the University so as to ensure that a high and uniform standard for these courses is achieved. Initially, such short courses should be held in one suitable training venue each in Africa, Asia and the Pacific, Latin America, and perhaps also in Europe, subject to availability of financial resources. Such a training programme of short courses will bring about a saving in costs in regard to travel and provision of hostship facilities for short courses and also assist in extending the World Maritime University training network throughout the major regions of the developing world.

l) It was decided to explore the possibility of the University developing an abstract service for technical literature on maritime matters, to be distributed to Member States.

m) The Board noted the good performance of the students with particular satisfaction, and further noted that close contact will be maintained by the faculty with the students, and that the students will be kept well informed



by the faculty on their strong points and their weak points so that remedial action can be taken in a timely manner whenever required.

n) The Board wishes to stress the importance of the library facilities of the University.

o) The budget of the University was reviewed for the July/December 1983 period, as also the revised budget for 1984 and the budget for 1985. The revised budget for 1984, and the budget for 1985 were approved, subject to the necessary financial resources being found. The approved budgets are annexed. It was decided that in future budget documents should include more detailed explanatory notes in regard to each item.

p) As a result of the discussion of these budgets, the Board decided that the present fellowship fee of US\$ 10,000 contributed by sponsoring authorities should be raised to US\$ 12,000 per student per year, in part to meet rising costs due to inflation. This figure will apply to new entrants, but not to the second year of students already enrolled. This new figure will also apply for the entrants in 1986, but thereafter there will be a review of the figure every three years.

q) The Board also examined the draft Rules of Procedure of the Board, provisional Financial Rules of the University, and the Staff Regulations of the University, and decided that these three sets of rules should be further improved and their revised version be submitted for approval at the third annual session of the Board. In the meantime, the members would be invited to send in suggestions on these drafts at their earliest convenience. In the interim and until the next session, these sets of rules will be employed for guidance in a flexible manner.

r) A World Maritime University Capital Fund of US\$ 25 million will be established by the Secretary-General of IMO for the benefit of the University. All ad hoc contributions not otherwise earmarked by the donors should go to the Capital Fund. The interest accruing will normally be retained in the Fund. The Board also urged all Member States to pursue the subject of tax exemption, i.e. charitable status, for contributions to the

University, and this recommendation will be made through IMO to all IMO Member States. The Board also recommended that organizations such as the United States Friends of the World Maritime University should be established in all IMO Member States.

s) The report of the Board, through the Secretary-General, to the Council of the International Maritime Organization on the work of the University will be prepared after the close of the session and circulated to Members of the Board of Governors.

t) The next session of the Board of Governors will take place on Monday and Tuesday immediately following the June 1985 session of the IMO Council.

\*\*\*

W/0528B

ANNEX 1

BOARD OF GOVERNORS  
Second Session

LIST OF PARTICIPANTS

Chairman	Mr. C. P. Srivastava	Chancellor World Maritime University Australia
	Capt. D. M. Waters	Brazil
	Capt. Geraldo Luis Miranda de Barros	Canada
	Mr. William A. O'Neil	Chile
	Sr. Guillermo S. Santa-Cruz	China
	Mr. Chen Zhuwei	Colombia
	Mr. Fernando Baldion	Denmark
	Mr. Tage Madsen	Egypt
	Dr. Gamal El-Din A. Moukhtar	France
	Professeur Pierre Bauchet	German Democratic Republic
	Professor Dr. E. Moeck	Germany, Federal Republic of
	Dr. Gerhard Breuer	Ghana
	Commodore S. G. Obimpeh	Greece
	Mr. M. A. Baroutakis	Hong Kong
	Mr. Frank Chao	Ivory Coast
	M. Souleymane Sogodogo	Japan
	Professor Hatsuzo Tani	Republic of Korea
	Dr. Joon-Soo Lee	Lebanon
	Mr. Georges Achkar	Liberia
	The Honourable P. T. Bowen	Nigeria
	Alhaji I. R. Abubakar	Norway
	Mr. A. Os	Poland
	Dr. Aleksander Walczak	Spain
	Capitan Francisco J. Montero Llacer	Sweden
	Mr. A. Forsse	City of Malmö
	Mr. Nils Yngvesson	USSR
	Mr. K. A. Davydov	United Arab Emirates
	Dr. Abdul Wahab Al Diwani	

ANNEX 2

WORLD MARITIME UNIVERSITY

Mr. J. K. Rice-Oxley, CBE United Kingdom

Mr. Edwin Murray Hood USA

Mr. Predrag Stankovic Yugoslavia

Mr. E. Jansen  
Chairman, Maritime  
Safety Committee,  
International

Maritime Organization

Mr. W. R. Mashler United Nations

Development Programme

Mr. B. Nilssen  
International Labour  
Organization

Dr. J. S. Walla Ministerial

Conference of West  
and Central African

States on Maritime  
Transport

Admiral A. Tulyanon  
Federation of ASEAN  
Shipowners'  
Associations

Mr. J. C. S. Horrocks  
International Chamber  
of Shipping

Mr. Knud Mols Sorensen  
International

Transport Federation

International Maritime  
Organization

Mr. L. van Nort

Mr. A. Adib

Cdre. S. A. Hussain

Advisers to the  
Secretary-General

B. Zagorin

Admiral S. Kinney

World Maritime  
University

Professor S. Arvedson, Rector

Professor G. Zade, Vice-Rector

Professor C. Mathieu

Professor P. S. Vanchiswar

Mr. L. Ohlin, Administrator

\*\*\*

## ANNEX 2

WORLD MARITIME UNIVERSITY  
BUDGET EXPENDITURES FOR 1984 AND ESTIMATES FOR 1985

(in US\$ thousands at 7.50 SEK = \$)

	<u>Revised</u> 1984 <u>Budget</u>		<u>1985</u> <u>Estimates</u>	
<b>I. <u>PERSONNEL COSTS FOR FACULTY AND ADMINISTRATIVE STAFF</u></b>				
<b>A. <u>Malmö-based staff</u></b>				
1. Resident faculty	484		518	
2. Administrative staff				
a. Professional	272		291	
b. General Service	192		200	
TOTAL	464		491	
3. Language courses	80		80	
4. Official duty travel	38		38	
TOTAL Malmö-based staff	1,066	30%	1,127	30.4%
<b>B. <u>External staff</u></b>				
1. Visiting Professors	90		90	
2. Advisory consultants	110		90	
TOTAL external staff	200		180	
TOTAL PERSONNEL COSTS FOR FACULTY AND ADMINISTRATIVE STAFF	1,266	36%	1,307	35.3%
<b>II. <u>STUDENT COSTS</u></b>				
1. Travel to/from home country	276		265	
2. Lodging and catering	714		830	
3. Cash allowance	228		268	
4. Clothing allowance	13		14	
5. Books	40		45	
6. Field trips/field work	350		350	
7. Other	4		4	
TOTAL STUDENT COSTS	1,625	46%	1,776	47.9%





## ANNEX 3

STUDENT ENROLMENT AT WORLD MARITIME UNIVERSITY

<u>COUNTRY</u>	<u>NAME</u>	<u>1983</u>	<u>1984</u>	<u>1985</u>
Algeria	Bernard DJEBAILI	2-MED(E)		
	Lounes LAHYANI	2-MED(N)		
	Abdelkrim REZAL	2-MED(E)		
	Ali AMGHAR			2-GMA
	Djamel BENCHEIKH			2-GMA
	Azzam DJEDIDI			2-MSA(N)
	Larbi AHMED YAHIA			2-GMA
Angola	C. P. T. da SILVA			2-GMA
	Manual Domingos FARIA			2-GMA
Argentina	F. HATZENBUHLER		2-MED(N)	
	Alejandro ARROYO			2-GMA
Bahrain	Yusuf Zainal A. M. ZAINAL	2-GMA		
Bangladesh	A. S. M. FATEHLOHANI	2-MED(N)		
	A. ZIAUDDIN	2-MED(E)		
	A. F. Hedayetullah BHUIYAN		2-MSA(N)	
	A. K. M. RUHUL AMIN		2-MED(E)	
	M. BADIUZZAMAN		2-MSA(E)	
	Kazi Ali IMAM			2-MSA(N)
	Abdul F. MOHAMMAD ULLAH			2-MSA(E)
Barbados	R. T. EMTAGE		2-GMA	
	Richard O. ALLEYNE			2-GMA
Benin	Wenceslas AFOUDA	2-GMA		
	Mohamed YACOUBOU		2-GMA	
Bolivia	Mario R. AGUILAR ZAMORANO		2-GMA	
Cameroon	Barnabas AKWO	2-GMA		
	Hans Ntungwa EWANG	2-GMA		
	Nzambu NSAHLAI	2-GMA		
GMA	- General Maritime Administration			2-year course
MED(N)	- Maritime Education (Nautical)			2-year course
MED(E)	- Maritime Education (Engineering)			2-year course
MSA(N)	- Maritime Safety Administration (Nautical)			2-year course
MSA(E)	- Maritime Safety Administration (Engineering)			2-year course
TMS	- Technical Management of Shipping Companies			2-year course
TOMSA	- Technical Officers Engaged in Maritime Safety Administration			1-year course
TESSC	- Technical Staff of Shipping Companies			1-year course



ANNEX 3

Chile	L. P. THORNTON Raul R. PILLADO VILLA	2-GMA 2-GMA	2-MSA(N)
China	Chen YISHUN Lian-tin LI Ming WEI	2-MED(N) 2-MED(N)	2-GMA
Colombia	Jose D. BELTRAN MARTIN Julio C. ESPITIA AVILEZ Antonella GAVIRIA DE LAVALLE	2-MSA(N) 2-GMA 2-GMA	
Comoros	Saidi DAOUDOU		2-GMA
Costa Rica	J. A. GALLEGOS	2-GMA	
Cuba	Ofelia MENDOZA MEDINA Humberto G. GONZALEZ Julio G. GONZALEZ SELLES Marcos ARZA VIZCAINO	2-GMA 2-TMS 2-MSA(E) 2-GMA	
Cyprus	Andreas C. LOIZIDES Andreas A. CONSTANTINOU Charalambos GEORGIADES Yiannakis KARITZIS Panicos PANAYI Demosthenes KANAKAS N. CHARALAMBOUS Nicos ECONOMIDES	2-MED(E) 2-MSA(N) 2-TMS 2-MED(N) 2-TMS 1-TESSC	2-TMS 2-MSA(N)
Ecuador	Luis GONZALEZ FRAGA Oswaldo JARRIN	2-TMS 2-TMS	
Egypt	Adel Hassan Adel EL AZIZ Salah Ahmed M. SALEH Said Ahmed ARBED Adel Hakim MAKAR Talal EL-SHAWARBY	2-MED(E) 2-MED(N) 2-MSA(E) 2-TMS	2-MED(N) 2-TMS
Equatorial Guinea	R. OBIANG ASANGONO	2-GMA	
Ethiopia	Abraha AMBACHEW T. BEKELE S. KEBEDE Negere Nega SEGNI Araya Lulseged YIMER Tilahun YIMER Samson SHIFERAW	2-TMS 2-MSA 1-TESSC	2-MSA(N) 2-GMA 2-GMA 2-GMA
Fiji	Netani SUKANAIVALU		2-MED(E)

Gabon	Joseph M. Etoughe OBAME Kaka GNAMBAULT	2-GMA 2-GMA	
Gambia	Abdou JALLOW		2-TMS
Ghana	Ambrose K. N. BEECHAM Nestor Percy GALLEY Benjamin OWUSU-MENSAH Magnus Teye ADDICO	2-GMA 2-GMA 2-GMA 2-GMA	
Greece	Konstantino ANDRITSOPOULUS	2-MSA(E)	
Guatemala	Maria I. FERNANDEZ		2-GMA
Guinea	Ibrahima Dianka CONDE Nounke KEITA I. SOMPARE Hassane BARRY Mamadou CISSOKO	2-GMA 2-TMS 2-GMA	2-TMS 2-MSA(E)
Haiti	Marie OSCAR Pierre CONSTANT	2-GMA 2-GMA	
Honduras	Jorge COLINDRES		2-MSA(E)
India	Sudhir KUMAR T. D. HAZARI Shri R. S. PANWAR Shri Shanti NARAYAN Byram Pastakia	2-MSA(N) 2-MED(N) 2-MSA(E) 2-MSA(E)	2-TMS
Indonesia	Ali MAKMUR Syukri MARZUKI Darmantuah SARAGIH Hamid HASAN Mohamad LUKMAN SYAH	2-TMS 2-GMA 2-GMA	2-GMA 2-GMA
Iran	Majid KEYNEJAD Hossein MOHIT	2-MSA(N) 2-MSA(N)	
Ivory Coast	Okon Joel AHIMON Yoboue KOUASSI	2-MED(E) 2-MED(N)	
Jamaica	Luci KITCHIN		2-GMA
Jordan	Ibrahim TAYYAN Walid AHMAD		2-GMA 1-TOMSA
Kenya	Mohammed Kassim MWATUWANO S. NZAVU Mohamed R. HUSSEIN JIN J. MAKAU J. M. ODHACH Juvenal SHIUNDU	2-GMA 2-GMA	2-GMA 2-TMS 2-MSA(N) 2-MSA(E)

Kuwait	Mohamed K. AL-MAZEEDI	2-GMA	
Liberia	L. KROMAH	2-GMA	
	S. R. BRUCE	2-MSA(E)	
Madagascar	Bruno ANDRIAMPARANTSOA		
	RAZAFINDRAZAKA	2-TMS	
	A. RAJOELARINOSY		1-TESSC
	Chrispin LEKIRA		1-TESSC
Malawi	A. B. MSOWAYA	2-MSA(E)	
Malaysia	K. RAMADAS	2-GMA	
Maldives	Mohamed THOWFEEQU		1-TOMSA
Mauritania	Aly Samba SALL	2-GMA	
	Idrissa BA		2-GMA
Mauritius	Wong CHUNG TOI		2-MSA(N)
	R. VASSOODAVEN		2-MSA(E)
Mexico	Santiago G. GARCIA GONZALEZ	2-MSA(N)	
	Angel SAUCEDO ESCOBAR	2-MED(N)	
	Armando FIERRO CARBAJAL	2-MED(N)	
	Angel Emilio SAVALA MADERO		2-MSA(E)
	Gilberto RUBIO IBIRA		2-GMA
	Genaro HERNANDEZ NARVAEZ		2-MED(N)
	Louis MURIEL DEL CASTILLO		2-MED(N)
	Wilfrido CHIPULI PALMA		2-MED(N)
	Jesus VAZQUEZ MORA		2-TMS
Morocco	Abderrafia BENNIS	2-MED(E)	
	Habib-Allah EL-HASSAN	2-MED(E)	
Mozambique	Antanasio FRANCISCO	2-MSA(E)	
	Joao Jaime SITOI	2-MSA(E)	
	Eugenio Luis Franco MACAMO		2-TMS
	Joaquim KANAMBANGA		1-TOMSA
	Aurelio S. MANGUE		1-TESSC
Nicaragua	Camilo J. LARGAESPADA		1-TESSC
	Absalon MARTINEZ		2-TMS
Nigeria	Herbert O. ANARAH	2-MED(N)	
	Philip Chukwumma NWOKO	2-MSA(N)	
	Moses Ayi OTOBO	2-MSA(E)	
	Olukayode AKINSOJI		2-MSA(E)
	N. S. A. ARCHIBONG		2-MSA(N)
	Sulaman A. BALARABE		2-TMS
	T. D. FEBOKE		2-TMS
	C. N. NEZIANYA		2-MED(N)
	W. A. O'DWYER		2-TMS
G. M. OYELAMI		2-TMS	

Pakistan	Bashir Ahmad VISTRO Habib Akhtar DAR Syed Akhtar ZAIDI	2-TMS	2-MSA(E) 2-MED(E)
Panama	Eduardo ARAUZ MORANTES Nazareno A. MONTALVAN CLEGHORN Mrs. I. NG DE TEJADA	2-MED(N) 2-MSA(E)	2-GMA
Papua New Guinea	Tony AMOA	2-GMA	
Peru	Gonzalo JAUREGUI BARRENECHEA Ramiro GUERRA SALINAS Jaime QUINTANA Luis MELLA MONTOYA	2-MSA(N) 2-GMA 2-MSA(E)	2-MSA(N)
Philippines	George M. PIMENTEL Julio L. RODRIGUES A. VIRAY	2-MED(N) 2-MED(E)	2-GMA
Portugal	Serafim Silveira PINHEIRO	2-GMA	
Qatar	Abdulrahman AL-MAHMOUD		1-TOMSA
Republic of Korea	Chul KIM Soon Myung SUL Eun LEE Yeong Woo JEON Yeong Sup LEE Cheon Kyi KIM	2-TMS 2-MSA(E)	2-GMA 2-MSA(E) 1-TOMSA 2-GMA
Samoa	Sammy STEWART		1-TOMSA
Saudi Arabia	S. HARERY Khalil KHAYYAT Hussein M. AL-MAJED Khalid M. A. SIDIK Mohammad S. YOUNIS	2-MSA(N) 2-MSA(E)	2-MSA(N) 2-MSA(N) 2-GMA
Senegal	Malamine THIAM El Hadj TOBE Pierre SARR	2-MSA(N)	2-GMA 2-TMS
Sierre Leone	Francis BOCKARI Patrick KOMOKAI C. D. GILPIN F. C. BOB-JONES	2-GMA 2-MSA(N)	2-MSA(N) 2-TMS
Somalia	Ahmed Hagi GAAL C. H. MUNYE A. S. MOHAMED Mohamed Said ABDI Abdullahi S. HUSSEIN Mohamoud M. KARSHE	2-TMS	2-GMA 2-GMA 2-GMA 2-GMA 2-TMS

Sri Lanka	A. J. S. L. PERERA Sarath Ubeypala LEWIS D. M. RATNAYAKE	2-TMS 2-TMS	2-GMA
Sudan	Hamad EL NIL HAMMAD		2-MSA(N)
Tanzania, United Rep. of	Che-Chiwalo NDALAMA A. S. MASSAWE Z. G. MORI	2-GMA 2-GMA 2-TMS	
Thailand	Pakit SANGKAPRIJA Veera PURIPANYAWONG Aree PICHITGLARIAM Miss B. PUKKAMAAN	2-MSA(N) 2-GMA	2-GMA 2-GMA
Togo	Pilakiwe ABOUZI Kossi ALETA		2-GMA 2-GMA
Trinidad & Tobago	Curtis Anthony ROACH George ALEXIS Adrian BEHARRY Michelle G. SQUIRES Yolande GOODING	2-MSA(N)	1-TOMSA 2-GMA 2-GMA 2-GMA
Tunisia	Samir MILADI Ridha BOUGATFA Lofti M. JEMMAL	2-MSA(N)	2-TMS 2-MED(E)
Vanuatu	Leith NASAK	2-GMA	
Venezuela	Edgard N. JIMENEZ EGUI Marcos LUCCHESI-CELIS Pastor M. NARANJO LA GRAVE Carlos Roberto WATKINS Omar Antonio VARELA	2-GMA 2-GMA 2-TMS 2-MSA(N) 2-TMS	
Yemen Arab Republic	M. Ahmed Abdo SALEM		1-TOMSA
Zaire	LUTUMBA-KOMBA Samba K. VUSHI R. NKURU	2-GMA 2-TMS	2-TMS
Zambia	Jolly M. SIMFUKWE		1-TOMSA

W/0536B

\*\*\*

ANNEX 4ACADEMIC STAFF AT WORLD MARITIME UNIVERSITY - FEBRUARY 1985

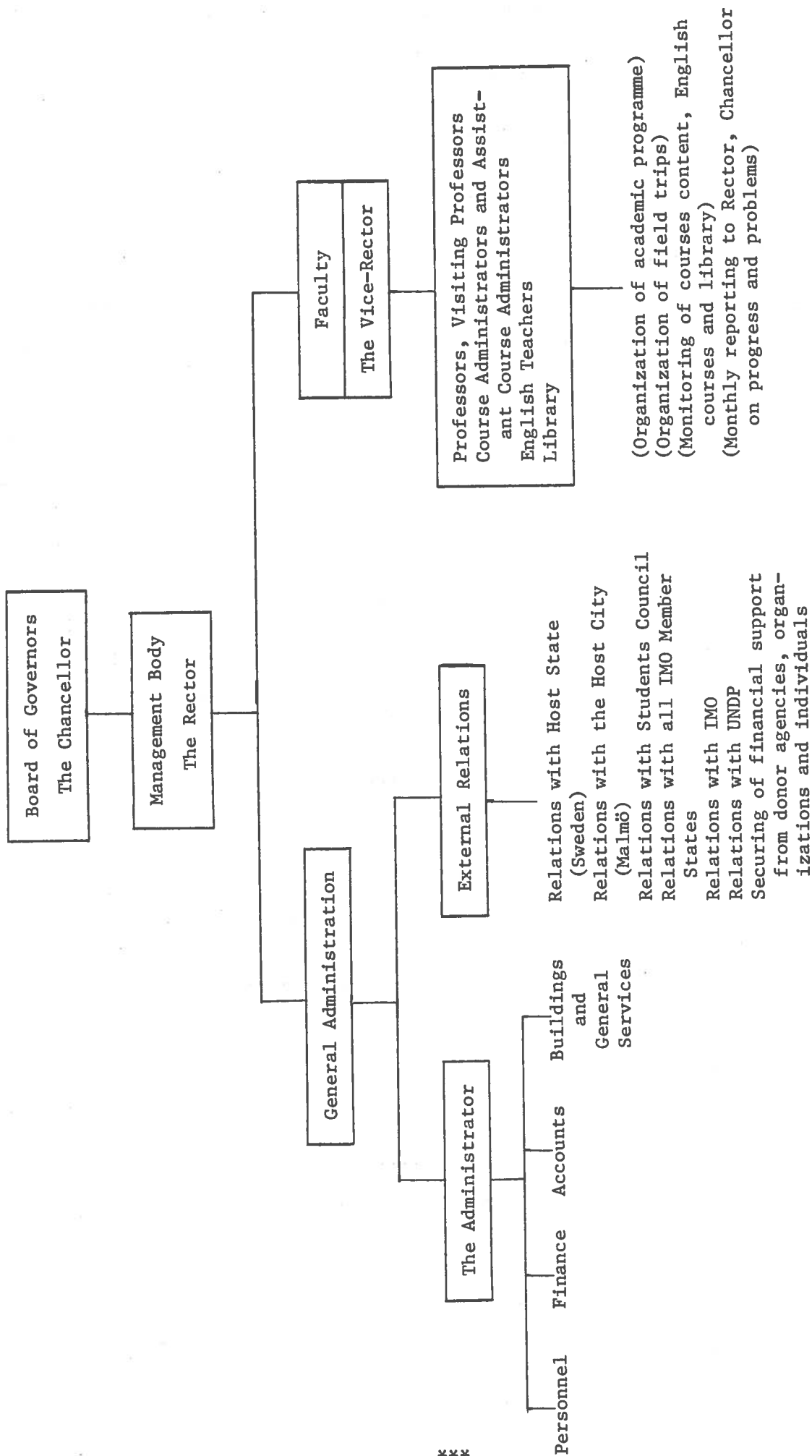
<u>NAME</u>	<u>COUNTRY</u>	<u>OFFICE</u>	<u>COURSE AND CLASS</u>
S. Arvedson	Sweden	Rector	
G. Zade	Federal Rep. of Germany	Vice-Rector & Professor	Maritime Education (Nautical) 83 & 84
T. Balmer	United Kingdom	Professor	Maritime Safety Admin- istration (Engineering) 83 & 84
P. Houssin	France	Professor	Technical Management of Shipping Companies 83 & 84
C. Mathieu	United States of America	Professor	Maritime Education (Engineering) 83 & 84
A Monsef	Egypt	Professor	General Maritime Administration 84
K. Nomoto	Japan	Professor	Technical Management of Shipping Companies 83 & 84
G. Stubberud	Norway	Professor	General Maritime Admin- istration 83
P. Vanchiswar	India	Professor	Maritime Safety Admin- istration (Nautical) 83 & 84
T. Sorensen	Denmark	Lecturer	
K. Mordt	Sweden	Head of English Programme	
A. Howe	United States of America	Senior Lecturer, English Programme	
R. Poisson	United States of America	Librarian	

W/0531B

\*\*\*



ANNEX 5



\*\*\*





## ANNEX 6

FINANCIAL AND FELLOWSHIP SUPPORT FOR WORLD MARITIME UNIVERSITY  
(US\$ thousands)

	1983 (July-Dec)	1984	1985
<u>RECURRENT COST SUPPORT</u>			
Sweden	500	1,000	1,000
UNDP*	400	800	800
Norway**	200	350	350
Commonwealth Secretariat for fellowships	50	100	110
TOTAL RECURRENT SUPPORT	1,150	2,250	2,260
<u>OTHER FINANCING OF FELLOWSHIPS</u>			
Greece	50	-	-
Italy	50	50	-
Denmark	40	60	48
France	-	150***	50
Germany, Federal Republic of	-	210	402
Japan****	-	-	100
United Kingdom	-	10	12
Sweden	-	20	58
TOTAL FELLOWSHIP FINANCING	140	500	570
TOTAL	1,290	2,750	2,830

\* Including advisory services at \$ 100,000 annual level. Figure for 1985 assumes continuation UNDP support beyond 30 June 1985 at previous level of \$ 200,000 per year.

\*\* Including fellowship support by Norway of \$ 50,000 in 1983, \$ 50,000 in 1984 and \$ 78,000 in 1985.

\*\*\* 1983 and 1984 pledges all paid in 1984.

\*\*\*\* Pledge \$ 100,000 for 1985 by Japanese Shipping Foundation

TABLE 1

TABLE 1. SUMMARY OF DATA FOR THE STUDY

Year	No. of subjects	Age (years)	Measurements	
			Mean (SD)	Range
1980	100	25	120 (10)	100-150
1981	100	25	120 (10)	100-150
1982	100	25	120 (10)	100-150
1983	100	25	120 (10)	100-150
1984	100	25	120 (10)	100-150
1985	100	25	120 (10)	100-150
1986	100	25	120 (10)	100-150
1987	100	25	120 (10)	100-150
1988	100	25	120 (10)	100-150
1989	100	25	120 (10)	100-150
1990	100	25	120 (10)	100-150
1991	100	25	120 (10)	100-150
1992	100	25	120 (10)	100-150
1993	100	25	120 (10)	100-150
1994	100	25	120 (10)	100-150
1995	100	25	120 (10)	100-150
1996	100	25	120 (10)	100-150
1997	100	25	120 (10)	100-150
1998	100	25	120 (10)	100-150
1999	100	25	120 (10)	100-150
2000	100	25	120 (10)	100-150
2001	100	25	120 (10)	100-150
2002	100	25	120 (10)	100-150
2003	100	25	120 (10)	100-150
2004	100	25	120 (10)	100-150
2005	100	25	120 (10)	100-150
2006	100	25	120 (10)	100-150
2007	100	25	120 (10)	100-150
2008	100	25	120 (10)	100-150
2009	100	25	120 (10)	100-150
2010	100	25	120 (10)	100-150
2011	100	25	120 (10)	100-150
2012	100	25	120 (10)	100-150
2013	100	25	120 (10)	100-150
2014	100	25	120 (10)	100-150
2015	100	25	120 (10)	100-150
2016	100	25	120 (10)	100-150
2017	100	25	120 (10)	100-150
2018	100	25	120 (10)	100-150
2019	100	25	120 (10)	100-150
2020	100	25	120 (10)	100-150
2021	100	25	120 (10)	100-150
2022	100	25	120 (10)	100-150
2023	100	25	120 (10)	100-150
2024	100	25	120 (10)	100-150
2025	100	25	120 (10)	100-150
2026	100	25	120 (10)	100-150
2027	100	25	120 (10)	100-150
2028	100	25	120 (10)	100-150
2029	100	25	120 (10)	100-150
2030	100	25	120 (10)	100-150

Table 1. Summary of data for the study. The table shows the number of subjects, age, and measurements for each year from 1980 to 2030.

The data indicates a consistent number of subjects (100) and age (25) across all years, with measurements ranging from 100 to 150.

This study was conducted over a 50-year period, from 1980 to 2030, with data collected annually.

The measurements recorded in the table are consistent across all years, suggesting a stable population and measurement protocol.

WORLD MARITIME UNIVERSITY CAPITAL FUND TRUST  
REGISTER OF DONATIONS

CONTRIBUTIONS PRIOR TO APPEAL

<u>Donor</u>	<u>Amount</u>	<u>US\$ Equiv.</u>	<u>Total</u>
Admiral Kinney	\$ 1,000	1,000	1,000
Kingdom of Saudi Arabia	\$ 50,000	50,000	51,000
Korea Maritime Port Administration	\$ 40,000	40,000	91,000
Mr. Chandris	\$ 10,000	10,000	101,000
Mr. Livanos	\$ 10,000	10,000	111,000
Mr. Santa Cruz	\$ 500	500	111,500

CONTRIBUTIONS AFTER APPEAL

John Swire & Sons Ltd.	£ 1,000	1,241	112,741
Intertanko	\$ 2,000	2,000	114,741
Anglo-Soviet Ship Co. Ltd.	£ 50	62	114,803
Secretary-General IMO	\$ 500	500	115,303
Dr. J. Wonham	£ 100	124	115,427
Sedgwick Ltd.	\$ 500	500	115,927
Dr. J. Wonham	£ 800	992	116,919
The Baltic Exchange	£ 1,000	1,241	118,160
Port Services Corp. Ltd. Oman	\$ 1,443	1,443	119,603
Varnima Corporation International, Greece	\$ 15,000	15,000	134,603

<u>Donor</u>	<u>Amount</u>	<u>US\$ Equiv.</u>	<u>Total</u>
Lloyd's Register of Shipping	£ 1,000	1,241	135,844
Dr. J. Wonham	£ 100	121	135,965
Maritime Transport Academy, Alexandria	\$ 2,000*	2,000	137,965
Dr. G. A. Mokhtar	\$ 400	400	138,365
Olympic Maritime S.A.	\$ 1,500	1,500	139,865
Compania Brasileira de Transporte de Graneas, Brazil	\$ 5,000	5,000	144,865
Government of Mexico	\$ 20,000	20,000	164,865
Sicula Oceanica Lit	1,000,000	534	165,399
Govt. of Seychelles	\$ 500	500	165,899
Hancock Ship Co. Ltd.	\$ 2,000	2,000	167,899
Arabian American Oil Co.	\$ 2,000	2,000	169,899
International Maritime Pilots' Association	\$ 1,000	1,000	170,899

\*\*\*

Additional Pledges

India:	The Shipping Corporation of India	\$ 10,000
	The India Ports Association	\$ 10,000
	The Maritime Union of India	\$ 10,000
China:	The Minister of Communications of the People's Republic of China (plus \$ 10,000 and Yuan 50,000 to IMO in support of short courses to be organized at Dalian Nautical College under the auspices of WMU)	\$ 10,000
Egypt:	Maritime Transport Academy, Alexandria	\$ 10,000 over five years of which the first \$ 2,000 is listed above.
Portugal:	Government of Portugal	\$ 4,000