


ShipArc 2015

World Maritime University

Regulatory developments and challenges – The Polar Code

An aerial photograph of a ship's deck, likely a research vessel, navigating through a field of sea ice. The deck is green and yellow, with various pieces of equipment and crew members visible. The surrounding water is dark blue, and the ice is white and fragmented.

Arsenio A. Dominguez
Ambassador and Permanent Representative of Panama to the IMO
Chairman MEPC

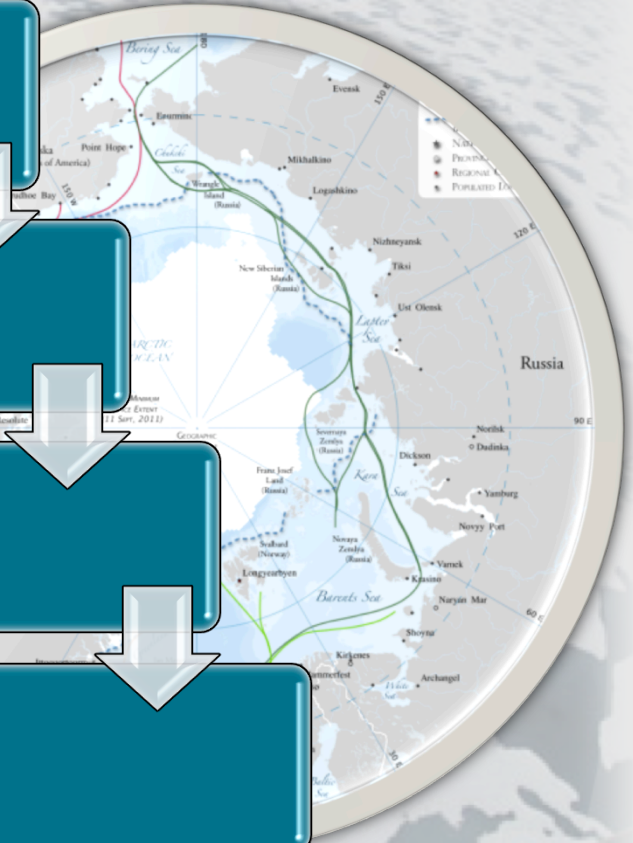
Code development process

SOLAS Chapter V

Intact Stability Code

MARPOL Annexes I, II and V

Guidelines



Adoption of the Polar Code



MSC 94 – November 2014

MEPC 68 – May 2015

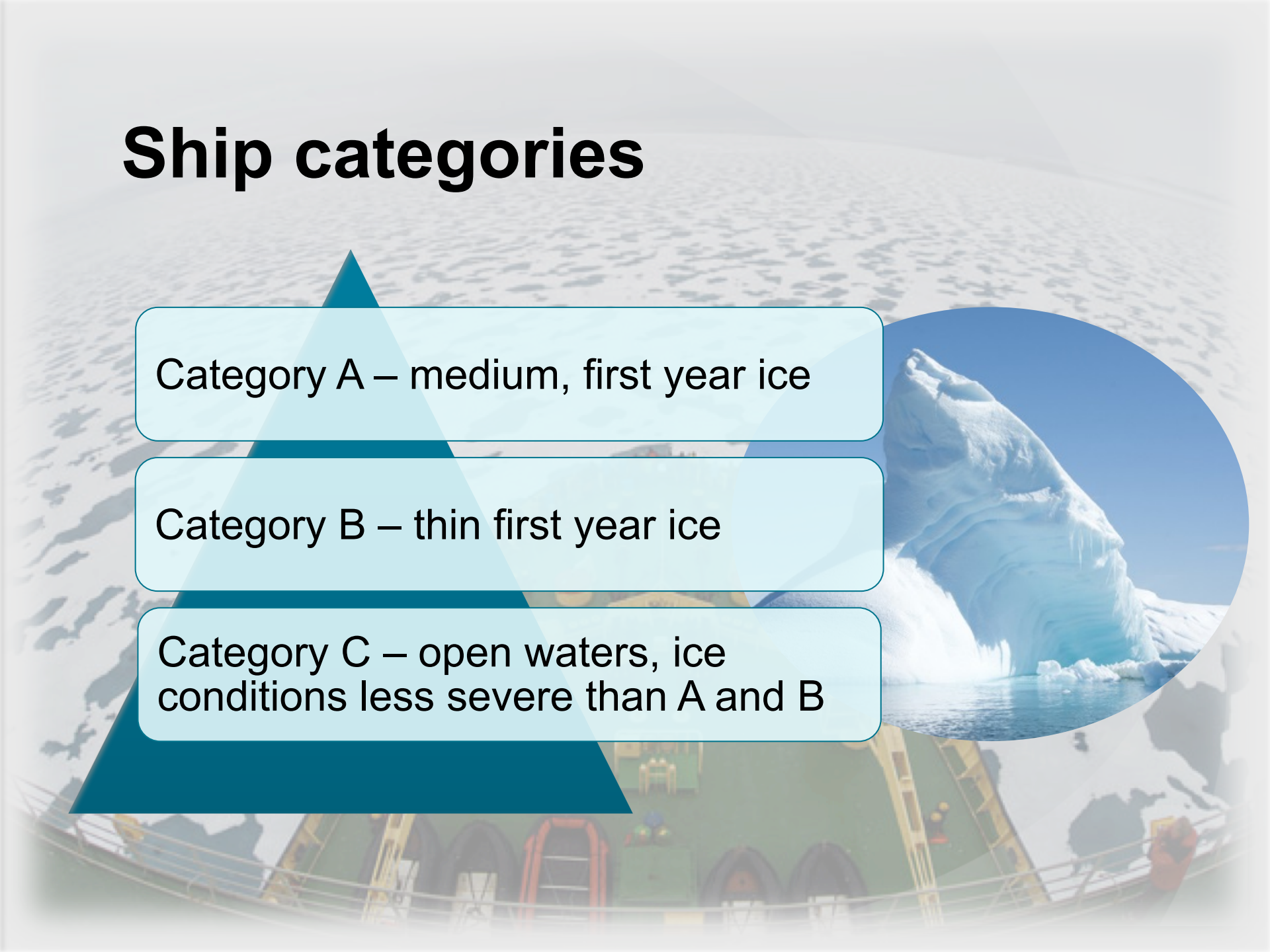
1 January 2017

Ship categories

Category A – medium, first year ice

Category B – thin first year ice

Category C – open waters, ice conditions less severe than A and B



Seafarers certification

Minimum requirements for masters and deck officers

Standards of competence, certificates, documentary evidence

Transitional provisions



Further work



Guidance on a methodology for determining limitations for ships operation in ice - POLARIS (Polar Operational Limit Assessment Risk Indexing System)

Assessment of additional performance / test standards on Fire Protection and LSA

Transitional requirements for training and certification of seafarers

Non SOLAS vessels

Challenges

Reception
facilities

Finalisation of
guideline
implementation

Seafarers

SAR

New
instruments or
regulations

An aerial photograph of a ship's deck, showing various pieces of equipment, including two large red cylindrical tanks, several yellow cranes, and a central structure. The deck is green, and the ship is surrounded by blue water. A semi-transparent green rectangular box with a thin white border is overlaid on the upper portion of the image, containing the text "Thank you" in white. The background image is slightly faded and has a soft vignette effect.

Thank you