

1891

## Bird's-Eye View of the City of Spartanburg, South Carolina, looking southeast, 1891

Bird's Eye View

Follow this and additional works at: <http://digitalcommons.wofford.edu/localhist>



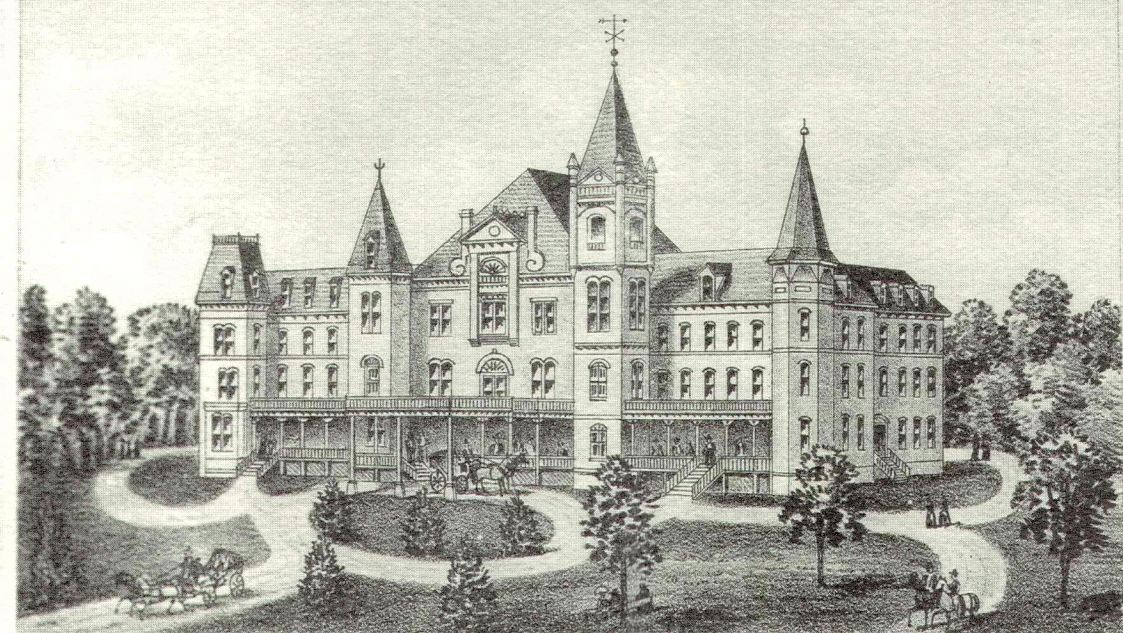
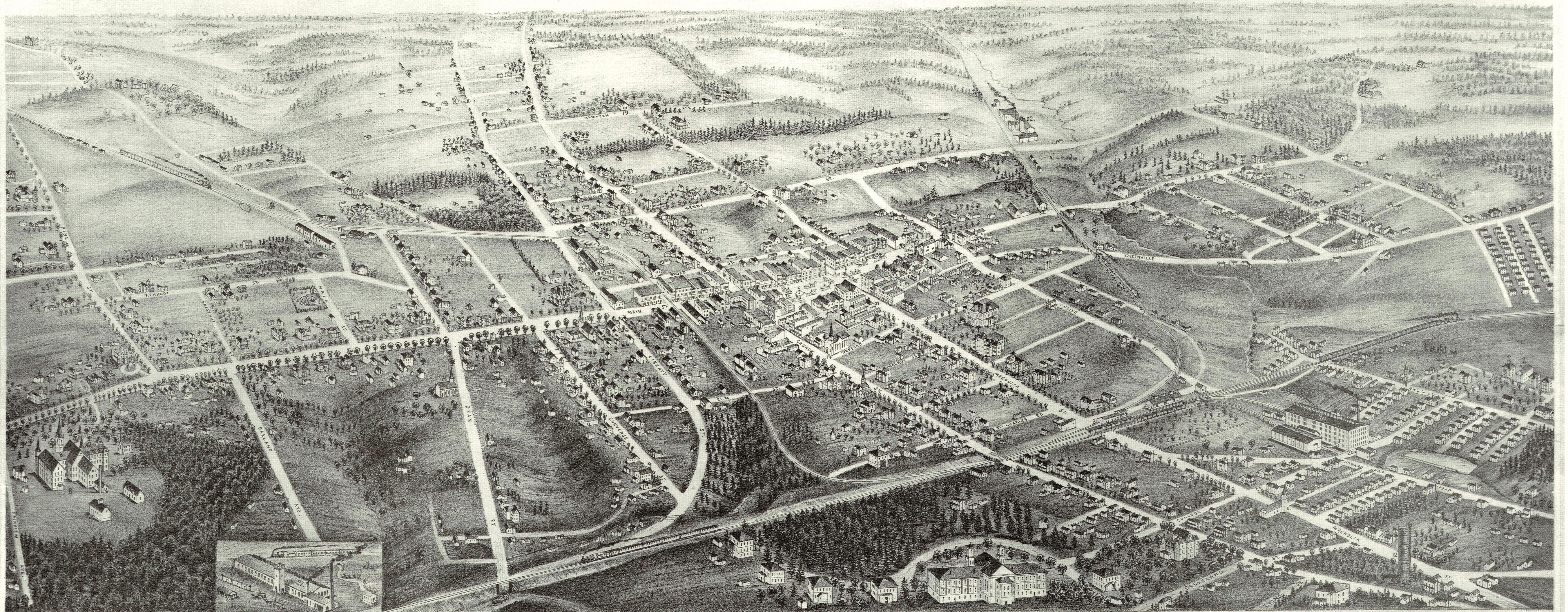
Part of the [Geography Commons](#), and the [United States History Commons](#)

---

### Recommended Citation

Bird's Eye View, "Bird's-Eye View of the City of Spartanburg, South Carolina, looking southeast, 1891" (1891). *Local History*. Book 9.  
<http://digitalcommons.wofford.edu/localhist/9>

This Book is brought to you for free and open access by the Sandor Teszler Library Archives and Special Collections at Digital Commons @ Wofford. It has been accepted for inclusion in Local History by an authorized administrator of Digital Commons @ Wofford. For more information, please contact [stonerp@wofford.edu](mailto:stonerp@wofford.edu).



CONVERSE COLLEGE

C. D. Whitman, Hardware, Main St.  
 S. B. Ezell, Hardware, Main St.  
 R. L. Bowden, Dry Goods, Main St.  
 Frank S. Smith, Commission Mcht., Main St.  
 New York Syndicate Store, Dry Goods & Shoes, Main St.  
 M. Helmman, Harness Mfr., Magnolia St.  
 John B. Cleveland, Attorney, " "  
 S. Wilson, Att., Magnolia St. " "  
 J. K. Jennings, Att., " "  
 H. B. Carlisle, Att., " "  
 T. R. Trimmer, County Clerk, Court House.  
 Jno. Earle Bomar, Attorney, Main St.  
 Spartanburg Real Estate Co., Calvert & Lawe, Main St.  
 Carlisle & Cannon, Furniture, "

- 1 Court House.
- 2 Jail.
- 3 City Building & Opera House.
- 4 Graded School.
- 5 Colored Graded School.
- 6 Wofford College.
- 7 Wofford Training School.
- 8 Converse College.
- 9 Kenney Library.
- 10 Morgan Monument.
- 11 Water Works.
- 13 Methodist Church.
- 14 Baptist " "
- 15 Presbyterian " "
- 16 Episcopal " "
- 17 Catholic " "
- 18 Baptist Mission.
- 19 Methodist Missions.
- X Colored Churches.

Ralf K. Carson, Attorney, Main St.  
 D. R. Duncan, Attorney - " "  
 T. N. Cudd & Co., Groceries & Provisions, Main St.  
 H. D. Dreyer, Samsplace  
 P. A. Gardner, Dry Goods, Boots, Shoes & Clothing, Main St.  
 W. T. Wingo, Fine Groceries.  
 J. N. Gaunt, Senr., Conf. Segars & Mineral Spring Water.  
 Jos. N. Elford, Attorney & Real Estate, Public Square.  
 Edwin Kerrison, Attorney, " "  
 S. T. McCraw, Attorney, " "  
 Jno. W. Carlisle, Attorney, Public Square.

Irwin Bros., Druggists, Main St.  
 Warren Du Pre, Books & Job Printing, Main St.  
 P. A. Gardner, Clocks, Watches & Silver Ware, Main St.  
 S. S. Daniels, Dentist Church St.  
 Samuel Q. Poinier, Postmaster, Church St.  
 Class J. Brode, Baker & Confectioner, Church St.  
 Bomar Bros., Meat Market, Church St.  
 S. Becker, Confectioner, Cor. Main & Church.  
 A. J. Guynn, Real Estate Exchange, Main St.  
 M. Hammett, Harness Mfr., Main St.

1891.

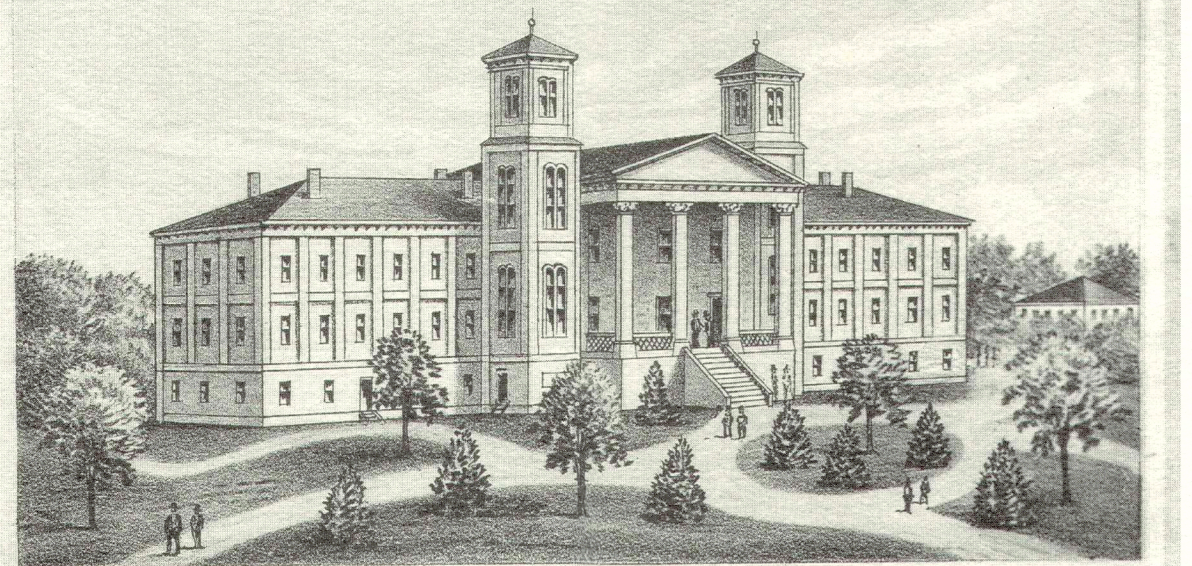
POPULATION IN 1880, 3200. SOUTH CAROLINA. POPULATION IN 1890, 8000.

# BIRD'S-EYE VIEW OF THE CITY OF SPARTANBURG,

LOOKING SOUTH EAST.

- 20 Spartan Cotton Mills, A. Green, Supt.
- 21 Beaumont Mfg Co., G. L. Wilson, Supt.
- 22 Produco Mills, R. T. Cates.
- 23 Morgan Iron Works, W. E. Lucas, Supt.
- 24 Ice Factory, W. B. Hallett, Supt. [Civil Engineers.]
- 25 Gas & Electric Light Plant, Leftwich & Ledshaw,
- 26 Carriage & Wagon Factory, F. Cantrell & Co.
- 27 Marble Works, John Geddes.
- 28 Livery Stable, Alex Long.
- 29 Lumber Yard, Robert Miller.
- 30 R & D. R. R. Depot.
- 31 P. R. & W. R. R. " "
- 32 Merchants Hotel,
- 33 Central Hotel,
- 34 National Bank,
- 35 Spartanburg Herald, Daily.
- 36 The Spartan, Weekly.
- 37 Merchants' & Farmers' Bank.

W. A. Burnett, Groceries & Commission Mcht., Main St.  
 T. A. Williams, Dry Goods, " "  
 Jno. R. Dean, Dr. " "  
 D. P. Posey, Dry Goods, Hats, Shoes & Clothing, " "  
 J. A. Hensman, Jeweler, " "  
 J. R. Liles, Commission Merchant, " "  
 W. K. Blake, Dry Goods, " "  
 S. B. Reid, Groceries & Provisions, " "  
 C. P. Thompson, Dry Goods & Groceries, " "  
 M. Carlsan, Contractor & Builder, Main & Branch St.  
 J. Miles Lee, Bakery & Confectioner, Pine St.



WOFFORD COLLEGE

A. H. Twitchel, Res. Pine St.  
 W. T. Edwards, " "  
 D. E. Converse, " "  
 Jno. Montgomery, Res. Cor. Elm & Church Sts.  
 J. A. Crews, Res. Walker St.  
 L. G. Potter, Res. Henry St. Head of Choice.  
 J. A. Laws, " "  
 R. M. Thomas, " "  
 W. H. Fleming, " "  
 W. T. Edwards, " "  
 W. Y. Penland, " "  
 Jno. F. Byerly, " "  
 C. L. Bosse, " "  
 N. P. Sorenson, " "  
 T. O. Monks, Res. Henry St.