

The University of Maine  
**DigitalCommons@UMaine**

---

Maine Town Documents

Maine Government Documents

---

2009

# Official Zoning Map Town of Porter Maine

Southern Maine Regional Planning Commission

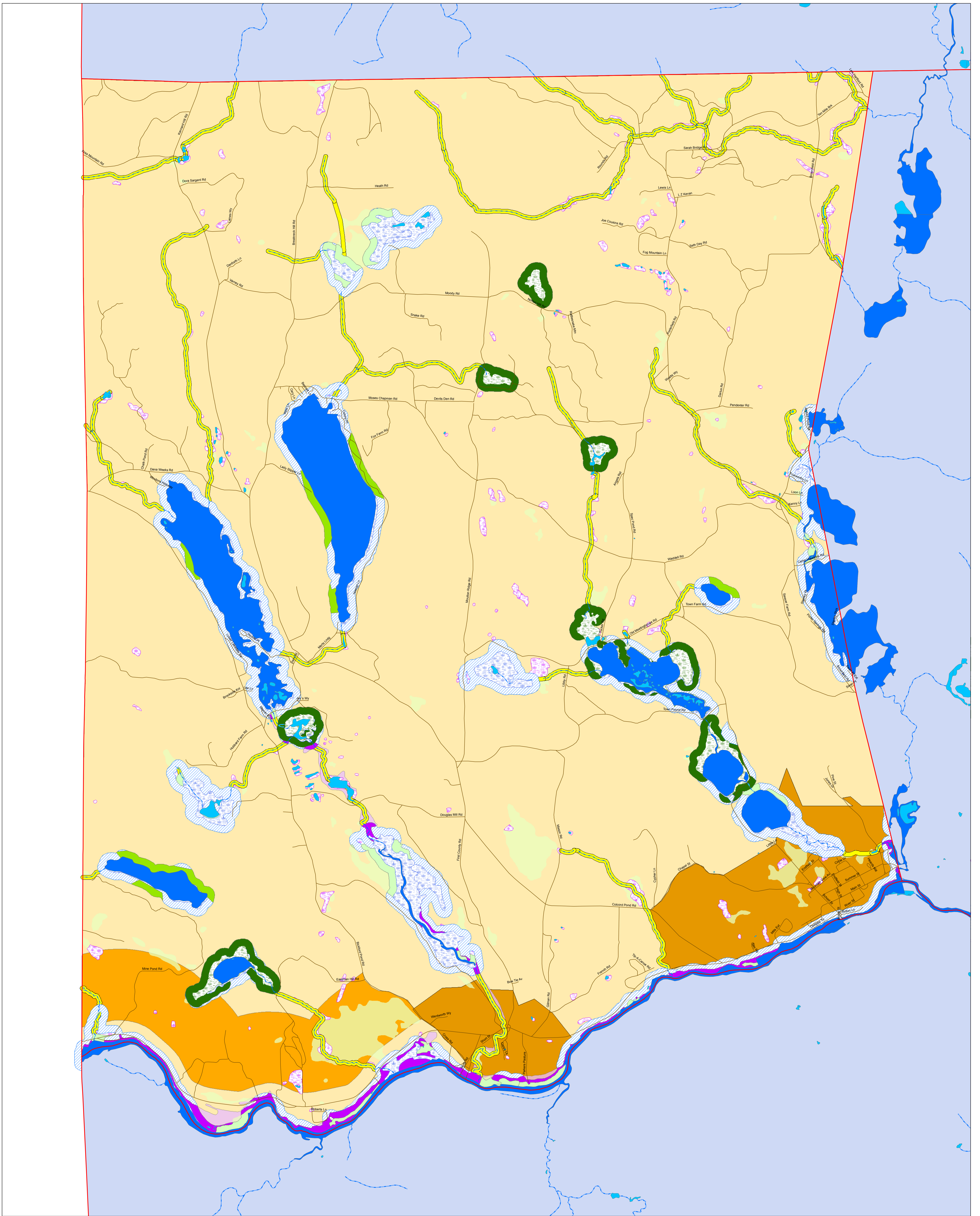
Follow this and additional works at: <https://digitalcommons.library.umaine.edu/towndocs>

---

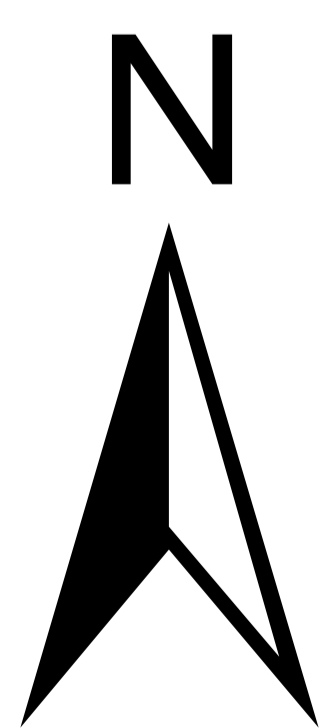
## Repository Citation

Southern Maine Regional Planning Commission, "Official Zoning Map Town of Porter Maine" (2009). *Maine Town Documents*. 8361.  
<https://digitalcommons.library.umaine.edu/towndocs/8361>

This Map is brought to you for free and open access by DigitalCommons@UMaine. It has been accepted for inclusion in Maine Town Documents by an authorized administrator of DigitalCommons@UMaine. For more information, please contact [um.library.technical.services@maine.edu](mailto:um.library.technical.services@maine.edu).



# Official Zoning Map Town of Porter



0 1,000 2,000 3,000  
Feet  
1 inch = 1,000 feet



For Town Meeting on 21 March 2009  
VERSION B - With General Development

## Legend

- Porter and Surrounding Town Boundaries
- Roads - E911 Program
- Ossipee Shore
- Rivers
- Ponds - Over 10 Acres
- Ponds - Under 10 Acres
- Streams
- Wetlands Rated as IWW Habitats by DIFW
- NWI Open Wetlands, > 10 Acres, Requires Shoreland Zone
- Resource Protection - 250 ft. around IWW Habitats - Dec. 2008
- Resource Protection - Steep Slopes >20% in Shoreland Limited Residential
- Resource Protection - NWI Wetlands in the 250 SLR Buffer, >2 ac.
- Resource Protection - 100-yr. Floodplains in Shoreland Zone
- A
- AE
- D
- Shoreland Limited Residential - 250 ft. Buffer
- Stream Protection - 75 ft. Buffer
- NWI Open Wetlands - Outside of Shoreland Zone
- NWI Forested Wetlands - Outside of Shoreland Zones
- FEMA 100-yr. Floodplains - Outside of Shoreland Zone
- A
- AE
- D
- Village Districts
- General Development District
- Rural District