

2018

Wayne Maine Zoning Map

CAI Technologies

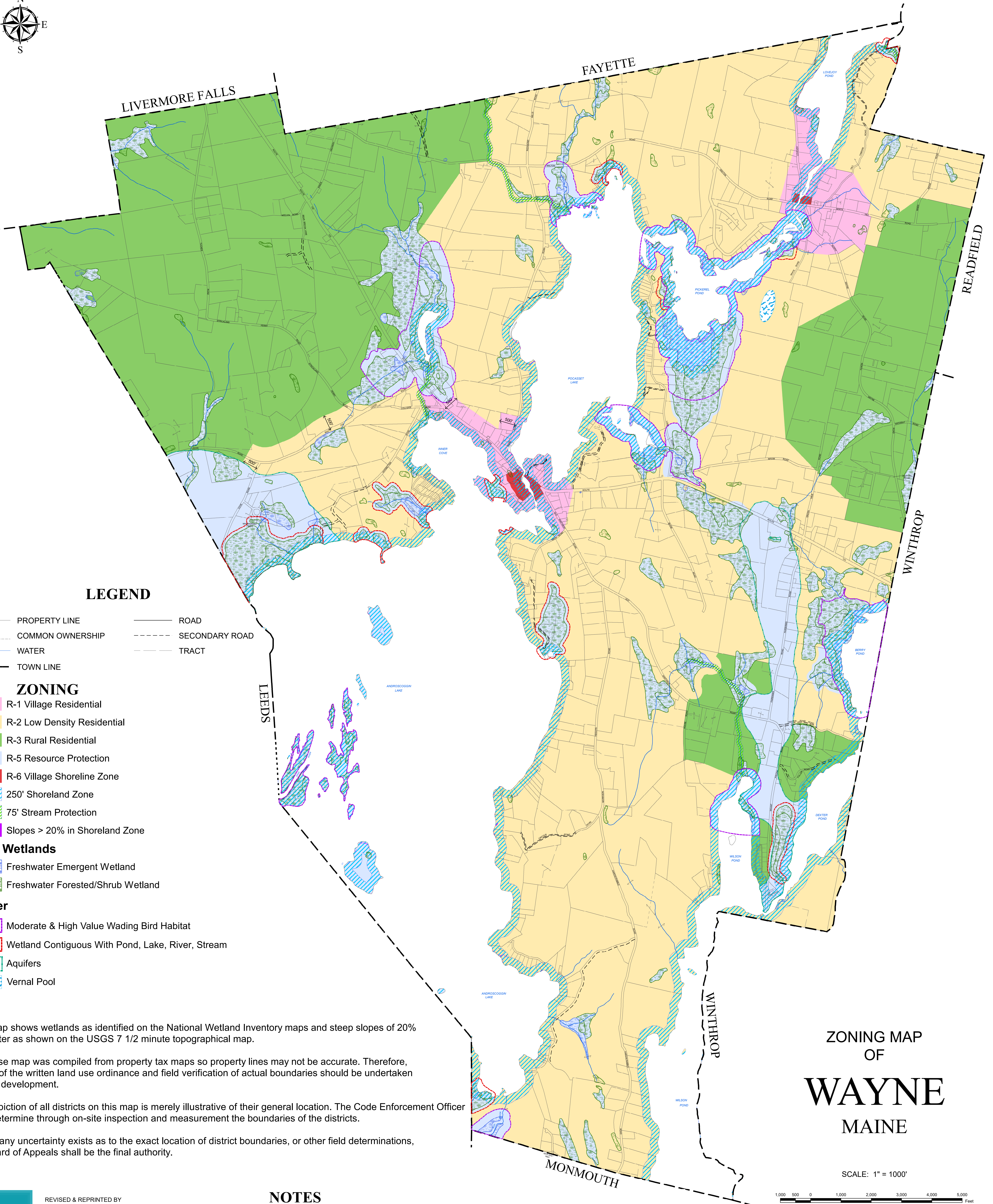
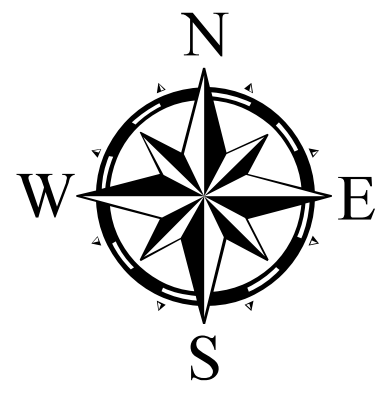
Follow this and additional works at: <https://digitalcommons.library.umaine.edu/towndocs>

 Part of the [Geography Commons](#)

Repository Citation

CAI Technologies, "Wayne Maine Zoning Map" (2018). *Maine Town Documents*. 7178.
<https://digitalcommons.library.umaine.edu/towndocs/7178>

This Map is brought to you for free and open access by DigitalCommons@UMaine. It has been accepted for inclusion in Maine Town Documents by an authorized administrator of DigitalCommons@UMaine. For more information, please contact um.library.technical.services@maine.edu.



LEGEND

- PROPERTY LINE
- COMMON OWNERSHIP
- WATER
- TOWN LINE
- ROAD
- SECONDARY ROAD
- TRACT

ZONING

- R-1 Village Residential
- R-2 Low Density Residential
- R-3 Rural Residential
- R-5 Resource Protection
- R-6 Village Shoreline Zone
- 250' Shoreland Zone
- 75' Stream Protection
- Slopes > 20% in Shoreland Zone

NWI Wetlands

- Freshwater Emergent Wetland
- Freshwater Forested/Shrub Wetland

Other

- Moderate & High Value Wading Bird Habitat
- Wetland Contiguous With Pond, Lake, River, Stream
- Aquifers
- Vernal Pool

This map shows wetlands as identified on the National Wetland Inventory maps and steep slopes of 20% or greater as shown on the USGS 7 1/2 minute topographical map.

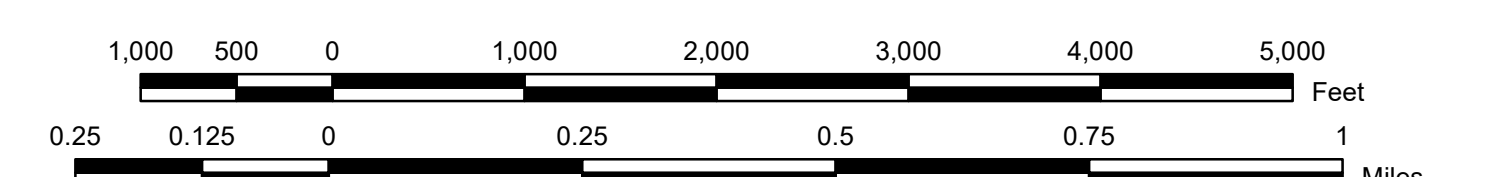
The base map was compiled from property tax maps so property lines may not be accurate. Therefore, review of the written land use ordinance and field verification of actual boundaries should be undertaken prior to development.

The depiction of all districts on this map is merely illustrative of their general location. The Code Enforcement Officer shall determine through on-site inspection and measurement the boundaries of the districts.

Where any uncertainty exists as to the exact location of district boundaries, or other field determinations, the Board of Appeals shall be the final authority.

ZONING MAP
OF
WAYNE
MAINE

SCALE: 1" = 1000'



NOTES

ORIGINAL ZONING MAP CREATED IN 1973
REVISED MAY 20, 1978
JUNE 13, 2018
IT IS INTENDED FOR REFERENCE AND PLANNING PURPOSES ONLY
PROPERTY LINES CURRENT TO 1 APRIL, 2017