

Spring 2-23-1939

Maine Campus February 23 1939

Maine Campus Staff

Follow this and additional works at: <https://digitalcommons.library.umaine.edu/mainecampus>

Repository Citation

Staff, Maine Campus, "Maine Campus February 23 1939" (1939). *Maine Campus Archives*. 3106.
<https://digitalcommons.library.umaine.edu/mainecampus/3106>

This Other is brought to you for free and open access by DigitalCommons@UMaine. It has been accepted for inclusion in Maine Campus Archives by an authorized administrator of DigitalCommons@UMaine. For more information, please contact um.library.technical.services@maine.edu.

"Campus" Broadcast
 over WLBZ
 Tonight, 7:00 P.M.

The Maine Campus

Hear Fred Patterson
 Campus Broadcast
 Tonight, 7 P.M.

Z 265

Published Weekly by the Students of the University of Maine

Vol. XI

ORONO, MAINE, FEBRUARY 23, 1939

No. 16

Rhode Island Wins Easy One-sided Victory Over Fighting Maine Quintet

Bridgton Defeated By Frosh Last Period Drive

BEARS OUTPLAYED

Rams' Scoring Trio Leads Keanymen To Victory

By Erwin Cooper
Campus Sports Editor

Led by her scoring triplets, Keaney, Jaworski, and Conley, the Rhode Island State basketball team swept over the University of Maine Varsity last night 100-56 in a game which featured basketball in its fastest state.

The University of Maine got off to a fast start when Wilson and Arbor tallied in quick succession, but thereafter the Rams took things in hand and, by the time four minutes of the first half was up, Conley had been the outstanding figure in a Rhode Island attack that built up a lead of 19-10.

Keaney's men were never in danger, and at the end of the first half Maine was clearly out of the running as the Rhode Island team led 50-22.

Rhode Island added 50 points more in the second half and Maine 36 points.

Lack of Experience

Throughout the game, it was evident that the Black Bears lacked the stamina and experience to cope with the dazzling offense which the Rhode Island team put on. Time and time again Conley, Keaney, and Jaworski eluded the Maine defense to drop the ball through the hoop. Conley contributed 25 points to his team's cause, while Keaney, besides playing a magnificent floor game despite his ungainly size, garnered 14 points for Rhode Island's Blue. Jaworski was high scorer for the evening with the amazing total of 38 points.

Despite the fact that he was outclassed, the Black Bear never gave up. Maine was handicapped by the absence of Dana Drew, a forward who had been coming fast of late. Drew was suffering from an infection and did not even dress for the game.

Despite the absence of his running mate, Louis Bourgoin was able to score 18 points which was his team's high individual score. Phil Curtis, who has been showing a good deal of improvement of late, was able to score 15 points.

Freshman Game

In a preliminary encounter, a game between the Freshmen and Bridgton Academy, the Freshmen were victorious by a score of 50-42. The game was close and hard fought throughout. The first quarter ended with the Freshmen leading 10-8 but at half

(Continued on Page Three)

Supply of Sebago Is Exhausted

The demand for the Sebago potato has greatly exceeded the supply available, according to Doctor Fred Griffee, Director of the Maine Agricultural Experiment Station. The same is true of the demand for Chippewa seed stock offered for sale by the Station.

Within less than a week from the day the announcement was made that seed stock of these varieties was for sale, orders had been taken for the whole supply. Since that time from ten to thirty requests have been received every day, requests which must be refused because the supply of seed stock has been entirely sold out. There is a great interest in the Sebago because of its resistance to late blight in the field and its resistance to late blight rot in the field and bin.

The Station has reserved some Sebago seed stock for those able to qualify for the roguing service of the new Foundation Seed program recently announced. This program assures the most rapid increase and distribution of new varieties. Such varieties in the Foundation Seed program receive the best care that the supervised service of specialists can give. Anyone interested in this program should contact his County Agent or write to Doctor G. W. Simpson at the Experiment Station at Orono.

Doten Named Business Mgr.

1923 Alumnus Receives University Position; Former Engineer

Henry L. Doten, of Augusta, construction engineer of the bridge division of the Maine State Highway Commission, has been appointed business manager of the University of Maine, President Arthur A. Hauck announced today. The appointment becomes effective March 6.

The position to which Mr. Doten has been appointed will combine the University purchasing previously handled by the late Edward H. Kelley and the general administration of plant maintenance and development formerly supervised by Mr. J. Albert Ross, who recently resigned as superintendent of buildings and grounds.

Ever since his graduation from the University in 1923, Mr. Doten has been with the State Highway Commission. His first position was bridge inspector, followed by the positions of draftsman, survey engineer, resident engineer, construction superintendent and his present position.

He has been active in fraternal and church affairs of Augusta and has been prominent in the Maine Association of Engineers, having recently been elected vice president of the association. Mr. Doten has also been active in alumni affairs, being a past president of the South Kennebec University of Maine alumni association and is president of his class, 1923, of which class Mrs. Doten, formerly Cora Russell, of Bangor, is also a member.

Maine Alumni Plan Augusta Meeting

Alumni of the Southern Kennebec County Association are planning a meeting in Augusta, Thursday, February 23, to welcome a number of guests from the campus, including President Arthur A. Hauck, Prof. Joseph M. Murray, and Alumni Secretary, Charles Crossland from the faculty, and the famous student entertainers Beth, Skip, and Ruth, Beth Trott, Mavis Creamer and Ruth Desjardins under the direction of Al Beverage, the M.C.A. secretary.

Toastmaster for the occasion will be Lucius Barrows, a graduate in 1907, chief engineer for the State Highway Commission. The story of the University's Marine Laboratory at Lamaine will be one of the features of the program, presented by Prof. Murray. President Hauck, headliner for the meeting, will bring latest news of the University to the alumni from Southern Kennebec County and the vicinity.

Alumni will Confer With Hauck, Deans

Four alumni are coming to the campus next Saturday for a meeting with President Hauck and the deans to study the possibility of a visiting committee plan at the University of Maine.

Many universities have adopted a visiting committee plan under which alumni and prominent and successful citizens are appointed to visit regularly or periodically a department or a college of an institution for the purpose of discussing with the department members problems and plans and to talk over the latest developments or trends in the fields of business, engineering or profession involved. Whether or not such a plan will be adopted at the University of Maine will depend largely upon the action of this joint committee.

The alumni committee appointed by Fred D. Knight, president of the General Alumni Association, consists of Leslie E. Little '04, engineer with the Public Utilities Commission in Augusta, Raymond D. Douglass '15, professor of mathematics at M.I.T., Cambridge, Mass., Frank W. Hussey '25, a leading grower of seed potatoes in Presque Isle, and Charles E. Page, Jr., '33, principal of the Abraham Lincoln School in Bangor.

New Queen and Mayors



Marian FitzGerald, newly chosen Intramural Carnival Queen, between "Honest" Jim Murphy, the Mayor of Rhode Island State College, and our own Mayor Patterson.

FitzGerald Elected New Queen Of Winter Carnival at Dance

Marion FitzGerald, '40, was chosen queen of the winter carnival at the Intramural Ball held Tuesday evening in Memorial Gymnasium. John Littlefield, '40, chairman of the ball committee, led her, at intermission, to Elizabeth Libbey, last year's queen, who presented her with a gold loving cup.

The newly-elected queen, a member of Alpha Omicron Pi sorority, wore a gown of blue and rose Roman stripes, with a full drinld skirt.

Elizabeth Libbey wore pink chiffon with a lace jacket.

Elizabeth Luce's dress was white taffeta with silver sequin straps. She wore a large silver sequin bird in her hair. Anna Verrill chose a gold damask dress of simple lines relieved only by a corsage of red roses.

Helen Woodwood was dressed in a black taffeta gown ornamented by pockets and a halter of rhinestone.

Eunice Gale wore a gay nineties black dress trimmed with red velvet. Tiny black ribbons on her wrists effectively complemented the gown.

Guests at the dance, for which Keaney Kallander's orchestra played, included:

Dean and Mrs. L. S. Corbett, Mr. and Mrs. F. S. Youngs, Prof. and Mrs. F. M. Brice, Prof. and Mrs. C. A. Jenkins, Dr. G. W. Small, Prof. and Mrs. H. D. Nelson, Mr. and Mrs. W. C. Kenyon, Rev. and Mrs. A. P. Beverage.

Mr. and Mrs. M. A. Hincks, Mr. and Mrs. S. N. Calderwood, Mr. and Mrs. P. A. Jones, Mr. and Mrs. J. W. Moran, Mr. and Mrs. W. C. Wells, and Mr. and Mrs. H. M. Woodbury.

Dallas Edwards, '42, and John Reitz, '41, served on the dance committee with the chairman, John Littlefield.

French Journalist Is Next Speaker

Pierre Frédréix, French author and journalist, will speak on "Europe after Munich Appeasement or War" at the next assembly to be held in Memorial Gym at 9:30 on March 2.

Mr. Frédréix is to be at the University for two days, March 2 and 3. Under the auspices of the Romance Languages department, he will lecture in the Little Theatre on the evening of March 2, when he will probably discuss the French-Spanish situation. He will be available for special conferences while on campus.

Mr. Frédréix is lecturing throughout the country under the auspices of the Institute of International Education of New York City. A contributor to journals and reviews, especially "Le Petit Parisien" for which he has reported in many European countries, in Asia, and in the United States, he has devoted himself to journalism since 1931.

He is a Licencié en Droit and a Licencié d'Histoire from the University of Paris. He has written "L'Ange et la Couronne," "Conquete," "Etat des forces en France," "Les Papiers Verts," and several other books, both political essays and novels.

Masque Will Have Extra Performance

"Helen of Troy," the third Masque production of the season will be presented four nights, March 8, 9, 10, and 11. Because this is the first presentation of the play, written by Joseph W. Miller, of the public speaking department, there has been a great demand for seats.

Herschel L. Bricker designed the setting and Mr. Miller is the scenic director. By the art of stagecraft the effect of marble has been given to the stage properties. The sixteen scenes of the play are made effective through the use of portable scenery, light and sound effects, and elaborate costumes. One of the foremost costumers in the country, Eaves of New York, has provided the costumes. He is the costumer of most Broadway productions.

Among the scenes in the play are those of the burning of Troy and a duel, for which some of the tallest men on campus have been selected.

The stage will be extended eight feet into the auditorium for the duel scene, in which as many as fourteen couples will be dueling at one time.

Arthur Nelke will play organ selections between scenes.

Music Concert Program Expanded; To be Varied

To meet the increasing interest in the Music Box concerts and the convenience of those unable to attend because of schedule conflicts, the service has now been expanded from one to five periods weekly, the concerts continuing in 17 Stevens North as follows: Mondays, Wednesdays, and Fridays at 3:30 p.m.; Tuesdays

(Continued on Page Four)

Girls of Four Colleges Will Meet for Playday

Maine will play hostess to twenty women delegates from four colleges this week-end at the twelfth annual Play Day.

The complete program of activities planned for the girls from Colby, Bates, Nason, and New Hampshire is listed below.

Friday, Feb. 24

(Continued on Page Four)

Phi Gamma Delta's Sculptured Carnival Queen, Carved in Ice, Wins First Prize in Contest

Maine Skiers Are Winners

Bears Are Easy Victors In Invitation Meet Here Wednesday

With only the ski jump event remaining, Maine led the three other colleges by 2 1/2 points in the invitation ski meet. The varsity winter sportsmen tallied 2 1/2 points to keep ahead of Bates with 18 points, Bowdoin 4 1/2, and Colby 2.

At the half of the meet, Bates led by 2 1/2 points but the Bower brothers came through on the cross country to put Maine ahead. Despite the fact that the snow was thin in places, the trails proved to be extremely fast, especially in the slalom event. Thompson, of Bates, whizzed through the difficult and fast course in 20 seconds, followed by Bill Bower and Ireland, of Bates, who tied for second place in 21.4 seconds.

Bill Bower, captain of the varsity skiers, carried away the honors for Maine by taking the downhill event in 28 seconds. Riddle, of Maine, pulled through with a tie for second with Thompson, of Bates, with a time of 29.2.

Bill Bower and John Bower did a wonderful job in the cross country event in taking first and second places respectively. Maine gained five points on Bates in this event which placed them at the head of the list of the colleges.

Summary:

Slalom—Won by J. Thompson of Bates, tie for second between Bower (M) and Ireland (Bates); R. Thompson (Bates), third: winning time 20 seconds; Bates 10.5; Maine 3.5; Colby 1; Bowdoin, 0.

Downhill—Tie for first between W. Bower (M) and Whitehall (Bowdoin); tie for third between Riddle (M) and J. Thompson (Bates); winning time 28 seconds; Maine, 7; Bowdoin, 4.5; Bates, 2.5; Colby, 1.

Cross Country—W. Bower (M) first; J. Bower (M) second. Maine 10; Bates, 5; Bowdoin, 0; Colby, 0.

Kappa Sigma Breaks Record

Houses Show Increases In Number of Pledges Over Past Years

Kappa Sigma broke all previous pledging records when forty-five men pledged to that fraternity at the end of the rushing period Monday. Alpha Tau Omega received the second highest number of pledges, thirty-one having chosen that fraternity.

All of the pledges did not choose a house on Monday and, since the following list contains only those who pledged that day, all of the present pledges are not listed.

Alpha Gamma Rho
 Boyd A. Curtis, David T. Dodge, Herbert Finlén, Raymond L. Gill, Russell D. Jose, Arnold W. Pittman, Frank E. Potter, Gordon E. Ramsdell, Charles E. Remick, Harlan O. Rowe, Norman A. Wing, and Clifford A. Priest, Jr.

Alpha Tau Omega
 Clayton P. Blake, Frederick T. Burpee, Ernest D. Chadbourne, Paul H. Clark, Bernard E. Colpitts, Douglas B. Cowie, Edgar W. Dangler, Harry L. Deering, Edwin B. Emery, Gerard A. Goulette, Michael Habern, Archie G. Hatch, Russell G. Johnson, Frederick C. Koolovitch, Laurence G. Leavitt.

Russell Matthews, Victor P. Minutti, Allan J. Neal, Jr., Dana H. Nye, Leonard Petterson, Stanley G. Phillips, Jr., Philip N. Pierce, George F. Piper, Edward N. Robertson, Henry M. Shepard, Loren F. Stewart, Roosevelt T. Susi, Mark A. Taylor, Robert J. Watson, Homer C. Woodward.

Beta is Second; S.A.E. Gets Third

MANY ENTRIES

Balentine, Maples Receive Mention For Girls

Phi Gamma Delta fraternity, with a statue carved out of ice of the carnival queen standing beside her throne, won first place in the snow sculpturing contest at the annual winter carnival yesterday. The background was made of ice squares with a diamond-shaped piece in the middle. A gold cup was presented to the fraternity by the Maine Outing Club at the Rhode Island-Maine game last night.

Beta Theta Pi and Sigma Alpha Epsilon fraternities won second and third places respectively. Beta Theta Pi's sculpture depicted two bears, one in a black tuxedo and the other on skis. A big M formed the background. A ski jumper won third place for Sigma Alpha Epsilon. The jumper was carved out from the ice background, while blocks of ice were piled up in front to give him the appearance of leaping over them.

Lambda Chi Alpha, who were attempting to beat the record held now by Dartmouth for the biggest snow sculpture, had not completed their monstrous basketball player, towering above the fraternity house, at the time when the judges viewed it.

Honorable mention for the girls went to the Maples and Balentine dormitories. Maples carved a blonde haired girl skiing in a blue ski suit and visor hat. Balentine's sculpture depicted the carnival queen seated on her throne.

An Eskimo dog sled pulled by three dogs was sculptured by Sigma Nu fraternity, while Phi Kappa Sigma fashioned theirs after the Intramural dance programs with carvings of the various sports around the base. Kappa Sigma served a coffin with a bucket and boot on the top labeled 'O' Man Moose.

A typical Maine scene of a deer lying between two fir trees was carved by Alpha Gamma Rho fraternity. A map of Maine with an M on it was carved out of the wall which served as a background. Sigma Chi's statuette was of a man on skis driving a horse. Donald Duck was carved by Tau Epsilon fraternity, while Delta

(Continued on Page Four)

Beta Theta Pi

Philbrook D. Allen, Edward P. Barrows, John C. Barrows, Francis W. Burger, Dallas H. Edwards, Paul G. Galentine, William P. Gilman, Elden D. Hall, Jr., Robert M. Healy, Dean C. Kimball, Otis C. Lawry, Harris L. McLean, Jr., Miles B. Mank, 2nd, and John W. Robie.

Delta Tau Delta

John A. Bower, J. Elwood Church, Jr., Ray W. Curtis, Jr., McClure Day, Richard Day, Anthony F. DeGraffenried, Jr., Edward J. Geary, Richard S. Graves, Carleton Herick, Jr., James F. Kenney, Jr., Paul H. Phelan, Lee W. Richards, Jr., Herbert W. Tucker, and Ellis R. VanHousen.

Kappa Sigma

Walter H. Armitage, Philip G. Baker, Reuben S. Burnham, Rudolph Conti, Thomas Dickens, George N. Dougherty, Wilbur R. Edgcomb, William Evans, Richard N. Fielding, Henry F. Cannon, William J. Garsoe, Manuel A. Gilman, Paul C. Gross, Eugene Leger, Alexander W. McKenzie, Thomas E. McCarthy, Donald E. Marriner, George V. Murphy, Einar A. Olson, Charles A. Peirce, Clarence A. Peterson, Frank H. Peterson, Thomas E. Pollock, Aaron H. Putnam.

George A. Riese, Jr., George D. Roben, Dan C. Roberts, John C.

(Continued on Page Four)

Final Casting Held For S.S. Rarebit

S. S. Rarebit, the Arts Club's second Pale Blue Revue, will be presented March 18 in the Memorial Gym, it was recently announced by the personnel committee.

Tonight at 8 o'clock tryouts for the revue will be held in the faculty room in the basement of South Stevens. The revue will also be cast tonight. No parts have been cast as yet; everyone has an equal chance to try out for the part he or she wishes.

The *S. S. Rarebit* is a light musical revue of love between a cheese King's daughter and a WPA sailor, the captain's daughter and a macaroni Prince, with comedy thrown in by two sailors, one of whom is in love with the cheese Princess' maid. There are dances originated by Miss Cassidy, and songs, written to Leo Lieberman's music, by Mr. Reynolds.

Tickets for the production will soon be on sale by members of the Arts Club.

The personnel committee consists of: William Clifford, producer; Carleton Cressy, business manager; Virginia Maguire, director; Buel Godwin, script; Mr. Cecil Reynolds, songs; Robert Davis, publicity; Eileen Cassidy, dance routines; Edna Louise Harrison, costumes; Helen Bond and Mildred Walton, secretaries; Mr. George McReynolds, faculty adviser.

Many Vote on Varied Topics In First Maine Campus Poll

In the first student poll conducted by the *Maine Campus* this week, a total of 573 votes, 127 of which were women's, was cast from the student body of 1,847.

The first question concerning a third term for President Roosevelt was heavily negative. The four and a half to one opposition undoubtedly reflects the entire student attitude.

The farmer's co-operative question showed some doubtful answers, probably because of the nature of the subject. The trend for co-operatives, only lately grown and publicized, demonstrates that the students are three to one in favor.

The Ludlow Amendment question is so narrowly favored that no significance whatever should be attached to the results. Gallup's poll showed a 70% favoring tendency. This contrasts with the bare majority maintained by the campus poll. As stated, the poll itself may not be representative of student opinion, so the question will be asked again in the spring.

The "Strange Interlude" column recently removed from the *Campus* holds a three to one sway of the 573 ballots which probably manifests the campus' desire to reinstate it.

Student opinion favors a Japanese boycott, two to one. The fact that no mention was made of the action to be taken means that Congressional or social force may have influenced the voting. However, in as much as there is no precedent for Congressional action, this influence is probably not a great factor.

The most controversial question is the choice of enlistment, draft, or refusal in regard to the student action if the United States should go to war. Three hundred fifty-six would participate by enlistment or draft and 144 were conscientious objectors. The remaining votes were of too doubtful a nature to be classified.

On 24 there were no distinguishing marks. Women constituted 18% of the ballots which made a choice.

The tabulated votes are listed below.

Question

No.	Yes	No	Doubtful
1	98	458	17
2	413	107	53
3	287	28	257
4	352	160	61
6	354	168	51
	Enlist	Draft	Refuse
5	167	251	165

The Maine Campus

Published Thursdays during the college year by the students of the University of Maine

1938 Member 1939 REPRESENTED FOR NATIONAL ADVERTISING BY Associated Collegiate Press National Advertising Service, Inc. Distributor of Collegiate Digest

Address all business correspondence to the Business Manager, all other correspondence to the Editor-in-Chief. Entered as second-class matter at the post-office, Orono, Maine. Advertising Rate 50¢ per column inch. Subscription: \$1.00 a year. Printed at the University Press, Orono, Maine. Office on the third floor of M.C.A. building. Tel. Extension 51

Table listing staff members including Editor-in-Chief, Business Manager, Managing Editor, and various departments like News, Sports, and Photography.

Rushing Has Improved

As was expected, the new system of rushing inaugurated this year has evoked considerable discussion. Most of the comment, we believe, favors the present system, both its date and duration.

The obvious tendency in the various changes made in the rushing system is to shorten its duration and minimize the time required of both fraternity men and freshmen.

Not the least of the rules which might be passed to improve rushing conditions is a rule strictly enforcing a silence period from 7 p.m. to 7 a.m. every day, excepting week-ends.

- Phi Gam Tea Dance: Phi Gamma Delta held a mid-winter tea dance Saturday afternoon...
Lambda Chi Informal: Lambda Chi Alpha held its winter informal house party Saturday evening...

CAMPUS CHATTER

By George

PARDON US for speaking when you interrupted but many happy returns of the Winter Carnival's birthday (with apologies to Winnie the Pooh).

AND INTRAMURAL Ball. When we got there we saw so many beautiful girls we thought we were in the wrong house.

WE WERE spending a quiet evening at home (we're a connoisseur on such quiet evenings) and happened to turn on the radio.

THOUGH THIS isn't by any means a column on Advice to the Lovelorn we do accept letters asking for such counsel.

Dear Perplexed: If you have been going with him two years and this is the first time he has tried to kiss you—well, give him up as a hopeless case.

At the eight o'clock bell: Gee, I can't help it if I am late to my class at Stevens. The professor always starts before I get there.

Research on Frenau Is Printed by Ellis and Marsh: Professor Milton Ellis and Philip M. Marsh, of Houlton, a former graduate student in English at the University...

Sorority Pledging Slated For First Days in March: Sorority pledging will take place March 1 and 2. All women who have made two point or over are eligible to sign preference slips.

The Men's Glee Club will have rehearsals at 8 o'clock tonight and 6:30 tomorrow night in 17 North Stevens and at 1:30 Saturday afternoon in Lord Hall.

Wednesday the Women's Glee Club will rehearse at 6:30 and the Men's Glee Club at 7:30 in 17 North Stevens.

RADIO NEWS

By Buel Godwin

We thought we would give you a rare treat tonight and have "Honest" Jim Murphy, the Mayor of Rhode Island, and our own Mayor Patterson talk to you tonight on the snowfall in the Alps, or the way to run a majority campaign.

We're very sorry but the Maine Campus Trio won't appear on the program tonight, but we are hoping that Frank Buss will. We don't know what Frank will sing, but whatever it is, it will be good.

Last Sunday night on the Maine Campus Review, we heard Alan Rosenberg and Betty Luce as Joe College and Betty Co-ed in the sketch.

Next Sunday the program will be under the direction and supervision of Betty Luce and Orin Perry. The program will consist of featuring incidents in the life of Washington at his home at Mt. Vernon.

Be sure and go to the program next Sunday afternoon. It is being held in the Little Theatre at 300, and everyone is asked to be in his seat at 2:55.

Be sure and listen tonight to the Campus broadcast at 7:00, WLBZ. While untrammeled winds sigh loudly...

In the Encyclopaedia Britannica Year Book for 1939, now in press, there is a brief article on Maine written by Edward F. Dow, head of the Department of History and Government.

Professor W. S. Evans was recently elected president of the Maine Association of Engineers, at a meeting of the association in Augusta, Saturday, February 11th.

Dorothy E. Phair, '40, was selected by the Women's Student Government Association to represent the University of Maine at the Coronation of the Queen of the Winter Carnival in Caribou.

THE RATTLE

By Al and Don

Though she was our favorite roommate's cousin, she was the original Blind Date. She blew in one night from the Ozarks and took us all by surprise.

"This," we said to ourself, "is a situation indeed. Here we are, a good six-three in altitude, and along comes this bouncing belle and tops us by at least an inch."

Oldest of eight children, she sprang from American peasant stock, in a tiny cabin in the Ozarks.

The people on last week's program were Eleanor Look, Bill Treat, Bill Hilton, Erwin E. Cooper, Louis Thibodeau, Bill Eldridge, and Buel Godwin.

Last Sunday night on the Maine Campus Review, we heard Alan Rosenberg and Betty Luce as Joe College and Betty Co-ed in the sketch.

Elwell Attends School At Washington D. C. Robert Elwell, '42, president of Future Farmers of America, is now in Washington, D. C., attending the officers' training school of that organization.

Elwell will be away at least two weeks, and, before returning, will make a brief tour of Virginia, in connection with his duties as president.

While untrammeled winds sigh loudly Trough lonesome spruce Sucking sustenance from eroded rock. Out of the bosom of the sea rise islands...

To succor the exhausted, starving for beauty. Dark-eyed, olive-skinned maiden, Loath to leave this Eden for less godly places.

To sleep in gentle peace. Dawn will rise to reveal the celestial gems To succor the exhausted, starving for beauty. Dark-eyed, olive-skinned maiden, Loath to leave this Eden for less godly places.

O Mother Nature, be sparing of your wonders, That we be less tempted to tears.

SWING CORN-ER SWEET

By "The Colonel"

What is swing? Everyone seems to have a different answer to this question. In my estimation the best answer is that given by the new "King of Swing," Artie Shaw.

Swing does not necessarily have to be fast. Some of the best pieces of swing are slow numbers. The quality of swing depends upon the synchronization and syncopation of the entire orchestra.

There is a rumor around New York that Bob Crosby may replace Benny Goodman on the Camel program. Although I have nothing against Goodman, I think it would be a good thing for a program of that type.

Four Meetings To Be Held By Intercollegiate Forum: The Maine Intercollegiate Forum, an annual event, will hold four meetings this year, at Bates on March 20, at Bowdoin on March 21, at Maine on March 22, at Colby on March 23.

Patronize Our Advertisers: Each student will write a discussion on some aspect of the problem, "What should we do about college education?" The papers are to be discussed at round table, with the audience participating.

Patronize Our Advertisers: The discussion at Maine will be at eight o'clock on March 22.

Patronize Our Advertisers: Notices of the Interest Groups now organized for members of the YWCA are being sent out this week, it was announced by Virginia Maguire, president.

Patronize Our Advertisers: The leaders of these various groups are as follows: modern art, Mildred Walton; current events, Lucille Epstein; period furniture, Ruth McClelland; new books and poetry reading, Eva Case; music appreciation, Dorothy Shiro; arts and crafts, Barbara Orff; study of culture of other countries, Margaret Hauck; and religion discussion, Margaret Steimetz.

Patronize Our Advertisers: Football Coach Dick Harlow has been appointed curator of zoology in the Harvard University museum of comparative zoology.

Advertisement for Collegiate Digest featuring the text 'The College World... In Pictures' and 'Collegiate Digest' logo. It promotes the digest as a weekly publication that brings college students and their parents news and pictures from campus.

Colby Mules in Attempt To Hand Bear Courtmen First Series Set Back

Durham is Second Trip Objective This Week

The Pale Blue basketball team, playing Colby at Waterville on Friday and New Hampshire at Durham, Saturday, take to the road again this week-end. The Colby game will be a state series battle, and the encounter with the Wildcats, which closes the current basketball season, is a New England Conference struggle.

Even if defeated by Colby, Maine is assured of at least a tie for the leadership of the State Series. The Pale Blue must win over New Hampshire to challenge for second place in the N. E. Conference.

On paper, at least, the Black Bear should have no trouble with either of these aggregations, but Colby has been somewhat strengthened by the addition of freshmen. Besides, Colby is always a difficult club to beat on its own floor. Maine outplayed New Hampshire here, but there may be a different outcome when Maine meets the Wildcats on their home floor.

The Maine quintet has improved tremendously with each game; the entire team on several occasions showing championship potentialities. Especially gratifying is the fact that most of Coach Woodbury's varsity have at least one more year of intercollegiate competition. Since the starting forwards, Louis Bourgoing and Dana Drew, are seniors, Buzz Tracy and Harv Whitten, the "Destiny Twins," will probably see a great deal of action. The rest of the probable starting lineup will consist of Wilson and Arbor at guards, and Curtis at center.

Coach Woodbury has stated that he would use as many men as possible in the next two games in order to give them experience for next year.

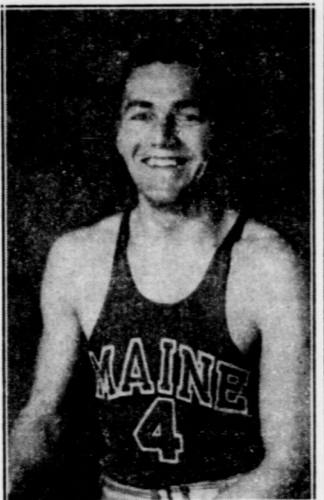
The University of Maine ski jumpers ran rough shod over the other entrants in the University of Maine invitation meet to win the meet by a comfortable margin.

Jeanette Lamoreau Elected President of South Hall

South Hall elected the following officers last week: Jeanette Lamoreau, president; Joyce Woodward, vice president; Martha Hutchins, secretary; Joan McAllister, treasurer; Dorothea Vail, fire chief; Maxine Robertson, assistant fire chief; proctors, Marjorie Whitehouse, Glenn Johnson, and Milledred Sutter.

Patronize Our Advertisers

Dana Drew



...star forward, who is playing a much improved brand of basketball this year. Dana was out of the Rhode Island game.

Frosh Court Season Ends This Week

The freshmen will wind up the season with two of their toughest games of the year, when, on Wednesday, Feb. 24 and Friday, Feb. 27, they meet Madawaska Training School and Ricker Classical Institute.

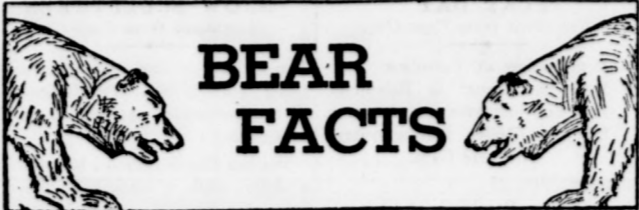
While not much is known about the Madawaska team, it is expected that their game with the frosh will be a hard-fought battle, with the freshman chances for victory pretty high as there is the possibility that Madawaska will be handicapped by the use of a large floor.

Ricker possesses a powerful team, and was recently defeated by the slim margin of two points by Coburn, admittedly one of the strongest teams in the state.

While the freshmen were defeated by Coburn 49-28, it is not safe to predict the outcome of the Ricker game as the freshmen have improved and have shown great scoring power since that defeat. The strong freshman reserves may help, as well as the fact that this will be the yearlings' last game, causing them to shoot the works in an effort to end the season with a victory.

The freshmen will depend upon Small, Downes, and Burke to take care of the forward positions, while Crowley, Barrows, Briggs, and French will hold down the guard posts with Leger at center.

Patronize Our Advertisers



BEAR FACTS

By Erwin E. Cooper

I never had so much sympathy for the umpire who gets socked with the pop bottle or crowned by a foul tip, or the referee who got knocked down in a football game as yesterday morning when I was invited to officiate at the Women's Annual Winter Sports Meet, a part of the Winter Carnival.

In the first place, I am not a lover of the wide open spaces when the cold north wind is sweeping a blinding sheet of snow down from somewhere in the Arctic Circle, and in the second place I guess the idea that the female of the species is more cunning and vicious than the male still holds true.

I thought I had been dodging a good job up until the time of the obstacle race when they asked me to sit midway on a board that was placed across three horses. Being a chivalrous gentleman, and a good fraternity man, I assented. There I was, astride the horse, the gun went off, and the horde of Amazons swept down upon the horse intent, I thought, on clearing it. Instead they seemed to make for me and I was assaulted from all sides with snow shoes. I was just about to yell for the Campu police force when the maidens looked down at the next obstacle where Alan Kirkpatrick was sitting astride another set of horses and the nowshoe army left to claim another target.

I had often wondered why men were not allowed to view the basketball games played within the inner sanctum of the women's gymnasium. At last I have the answer. Contrary to the principles of good education, we men are to be victimized on the pretext that we should not be disillusioned. Maine's athletic coeds are not the docile feminine creatures that poetry tells us should inspire men with that chivalrous feeling toward femininity.

The Amazon

By Emily Hopkins

Miss Helen Lengyel, head of the physical education department, is conducting a research on the status of the health of women students in rural and urban Maine. The study is based upon the records of the physical examinations and the health of the students during their four years of college.

Statistics used are 1922-1941 inclusive—nearly twenty years of Maine co-eds—and they consider nutrition, development, and organic and functional disorders. The purpose of the study is to determine the relationship of the weight, height, and stature of the girls.

Miss Lengyel expects to have the facts ready for publication some time this spring.

This week's basketball schedule is slated as follows:

- Thurs. Feb. 23 at 4:00 Soph. B vs. jr. B
Mon. Feb. 27 at 4:00 Frosh A vs. sr. A
Tues. Feb. 28 at 4:00 Soph. A vs. sr. A
Wed. Mar. 1 at 4:00 Frosh B vs. jr. A
Wed. Mar. 1 at 7:00 Frosh B vs. soph. B
Wed. Mar. 1 at 8:00 Jr. B vs. sr. B

The results of the games to date show some surprises. All for the glory of the sport!

Jr. B....24; frosh B....38
Sr. A....45; jr. A....16
Soph. A....43; sr. A....11
Soph. A....41; sr. A....10
Jr. A....36; frosh A....25
Frosh B....20; soph. B....30
Sr. B....20; jr. B....17

It looks as if the sophomores have the edge so far. Keep it up, '41!

The big week-end of the twelfth annual play day is almost here. Heading the arrangements are:

Ferne Lunt—General Chairman
Margaret Hoxie—Program Chairman

Madge Stacy—Registration
Marjorie Deering—Luncheon
Alice Ann Donovan—Banquet
Beatrice Gleason, Agnes Walsh—Hospitality

Maine will play hostess to five delegates from each of the following colleges: Bates, Colby, New Hampshire, and Nesson. The girls will be chaperoned by their physical education directors. Here's the program:

- Registration at Balentine 5:45
Dinner at Balentine 7:00
Program registration 8:00
Roller skating party—Alumnae Gym

Saturday, Feb. 25
7:15 Breakfast—Balentine and Colvin
8:00-8:30 Campus inspection tour
9:00 Bus leaves Balentine for Etna winter sports outing.

(If the weather is bad, games will be played in Alumnae Gym.)
1:00 Luncheon at Etna followed by discussion of girls' athletics
4:00 Return to campus
6:30 Bus leaves Balentine for Old Town
7:00 Formal banquet at the White House, Old Town

William R. Booth and Wesley J. Dyer have pledged to Alpha Gamma Rho, and John A. Friday has pledged to Beta Theta Pi it was recently reported by the interfraternity council.

Campus Calendar

Thursday Feb. 23
7:00 p.m. Campus Broadcast. WLBZ.
Alpha Chi Sigma Open Meeting. 305 Aubert Hall.
Speaker: Stanton Glover.
Subject: Rubber Industry.

Friday Feb. 24
1:00 p.m. Campus Meeting.
7:00 p.m. Basketball game. Frosh vs. Madawaska.
8:00 p.m. Alpha Gamma Rho Informal.

Sunday Feb. 26
4:15 p.m. Vesper Service.

Monday Feb. 27
7:00 p.m. Basketball game. Frosh vs. Ricker.

Phi Eta, Phi Mu, and A. T. O. Head Basketball Leagues

Pi Eta Kappa, trailed by Theta Chi, is ahead in the Northern League, while Phi Mu Delta and Alpha Tau Omega are tied for first place in the Southern League in the Intramural basketball program.

Alpha Tau Omega smashed Tau Epsilon Phi, 56-34, and downed Alpha Gamma Rho, 64-23; Beta Theta Pi subdued Theta Chi, 48-18; Phi Mu Delta scored its seventh consecutive win when it beat Phi Kappa Sigma, 39-8; East Oak managed to nose out Phi Gamma Delta, 26-24; Dorm A lost to Sigma Nu, 48-12 Delta Tau Delta was victorious over the 395 Club; the commuter setup rolled over East Oak to the tune of 45-10.

Dorm B topped Lambda Chi Alpha, 62-40; Alpha Gamma Rho was taken by Sigma Chi, 32-24; the Rover Boys beat Lambda Chi Alpha, 46-35; and the Aggies lost to Sigma Alpha Epsilon, 35-46.

Games were forfeited by the 395 Club to Phi Eta Kappa, Sigma Nu to Phi Eta Kappa, West Oak to Kappa Sigma, and West Oak to Theta Chi.

RHODY-MAINE (Continued from Page One)

time Bridgton was two up, 23-21. At the end of the third period the score was tied 33-33. In the final stanza the Freshman's superior reserve strength began to show its worth.

Parker Small continued on his winning way by scoring eighteen points. As usual, the play of Nat Crowley stood out, and, although he scored but eight points from his guard position, his play and strategy were intelligent and well conceived. Leger's performance at center and off the backboard begins to show more polish and he was able to sink several fine follow-up shots.

De Nino, with fifteen points, was high man for Bridgton.

French Club Presents La Kermesse Heroique

The French Club presented "La Kermesse Heroique" or "The Carnival in Flanders," Tuesday evening, February 14.

The theme of the movie was of the women saving Flanders from destruction due to the oncoming enemy by their "arms." The women, for once in Flanders, did something that "didn't concern men." The plot unraveled itself amusingly, involving the usual love, and ended on a happy note.

This movie gave the audience an idea of the customs of the French people.

Maine Freshman and Varsity Track Teams Favored in Meets with Colby; Cochrane and Daggett are Threats

Maine is Defeated On Cinders by N.H.

Maine lost the first dual meet of the season to New Hampshire last Saturday, 67½ to 49½. Seven new meet records were established, but the best performance of the meet was a 54 foot 4 inch weight throw that "Lefty" Bennett fouled slightly.

The Freshmen turned in an upset win over Bridgton. Bill Gilman tied the meet record in the high hurdles, but the best work by a Maine man was the double win in the 600 and 1000 yard runs by Morrill Gatcomb, Bob McGone, the fastest prep-school sprinter in the state, tied the 70 yard dash meet record for Bridgton, besides winning the 300 yard run and tying for first in the broad jump. Ben Graham scored ten points in three events for the Frosh.

The varsity showed its expected weakness in the sprints and hurdles. New Hampshire took two places in the 70 and in the high hurdles, besides sweeping the low hurdles, the 300, and the broad jump. Don Smith won the 1000 and the mile, coming within two-fifths of a second of the college record in the former. Bennett, Dyer, Smith, and Leonard all set meet records, while New Hampshire men set two and shared Leonard's pole vault mark.

- Summary:
35 Pound Weight Throw: Bennett (M), Johnson (M), Serota (M); Distance—51 ft, 8½ ins. (New meet record.)
45 Yard High Hurdles: Keadin (NH), McCarthy (M), Pieciewicz (NH); Time—6½ secs.
70 Yard Dash: Stewart (NH), Wright (NH), Atwood (M); Time—7¾ secs. (New meet record.)
1 Mile Run: Smith (M), Jernison (NH), Dequine (M); Time—4:42.
Shot Put: Dyer (M), Bennett (M), Keadin (NH); Distance—43 ft. 10 ins. (New meet record.)
600 Yard Run: Abbott (NH), Ehlrbach (M), Elliott (NH); Time—1:15½. (Ties meet record.)
High Jump: Tie between McCarthy (M) and Keadin (NH), third, Dexter (M); Height—5 ft. 10 ins. (New meet record.)
Two Mile Run: Tie between Bishop and Underwood (NH), third, Wheeler (M); Time—10:45½.
100 Yard Low Hurdles: Tie between F. A. Ayer and F. H. Ayer (NH), third, Pieciewicz (NH); Time—12 secs.
1000 Yard Run: Smith (M), Jones (NH), Underwood (NH); Time—2:17½. (New meet record.)
300 Yard Run: Abbott (NH), Sheahan (NH), Wright (NH); Time—3:35 secs.
Pole Vault: Leonard (M), Rich (M), third, tie between Weaver (M), Keadin (NH), Onella (NH); Height—12 ft. (New meet record.)
Broad Jump: Stewart (NH), Mather (NH), Maillard (NH); Distance—21 ft, 9¾ ins. (New meet record.)

Varsity Ski Team Goes To ISU Meet in Vermont

The varsity ski team will journey to Vermont Thursday to compete in the ISU Meet at Norwich University which will be held Friday and Saturday.

Each college and university is limited to an eight-man team and to four entries in each event. Coach Ted Curtis has entered a strong and well-balanced eight-man team in Bill Bower, John Bower, Oscar Riddle, Forest Whitman, Ralph Woodbury, Leon Greene, Dave Greenwood, and Bill Chandler.

However, the powerful squad has been crippled appreciably by "rushing" and the lack of practice will be a handicap. Coach Ted Curtis' big worry now is the inability of any member to compete which would throw his balanced team out of equilibrium.

The events listed for the meet are: downhill, slalom, jump, cross country, and the combined event. In the downhill event Bill Bower, John Bower, Oscar Riddle, and Forest Whitman will perform for Maine.

In the slalom, Bill Bower, John Bower, Oscar Riddle, and Ralph Woodbury are entered.

The ski jump will feature Bill Bower, John Bower, Leon Greene, and Dave Greenwood for Maine.

Bill Chandler, Greene, Bill Bower, and John Bower are entered in the cross country.

Maine's entry in the combined event are Bill Bower, John Bower, Oscar Riddle, and Leon Greene.

Naval Reserve Talk To Be Held Mon.

Representatives from the U. S. Naval Reserve Aviation Base at Squantum, Mass., will visit the University on Monday evening, February 27, to present a lecture on training opportunities in the naval and marine corps reserve aviation for students interested in this field. The talk on the Naval Reserve Aviation training will be illustrated by a moving picture, "Navy Wings of Gold," and will be scheduled in room 305 Aubert at 7:00 p.m.

Senior students and undergraduates interested in the aviation industry will be given opportunity to discuss the four-year training program with the naval reserve representatives. Following the discussion and moving pictures, a medical officer will be available for preliminary examinations of interested students.

Qualifications for admittance to the training program include a rigid physical examination and preparation in certain fields of mathematics or an equivalent educational background. It is open in exceptional cases to students who have completed their sophomore year.

Sunday at 3:00 the Men's Glee Club will broadcast from Lord on the "Maine Schools on the Air" program. A Musical Vesper will be held at 4:15 Sunday afternoon in the Little Theatre. The Men's Glee Club, the University Trio, and soloists will participate.

The Swing Band will have a rehearsal Monday at 6:00 o'clock.

Wildcats Lose To Pale Blue

The University of Maine Varsity Basketball team outscored the New Hampshire Wildcats 69-56 in a game played last Saturday night in the Memorial Gymnasium.

Maine jumped out to a lead early in the first half and thereafter was never headed although the Wildcats gave the Bears some anxious moments just after the second half began. Maine led 32-26 at half-time, but New Hampshire, with Cryans on the rampage, drew up to 37-35 when the Pale Blue took time out. From then on the Black Bears drew steadily away from the visitors so that, toward the end of the battle, the fans were yelling for the home team to make it 70 points, but Coach Woodbury sent his substitutes in and although several shots got inside the hoop, they bounced out, and Maine was just short of the mark as the game ended.

Dana Drew continued to find the hoop frequently and his 16 points was high for the evening, while Phil Curtis continued to improve at center and his play off the backboard helped the Pale Blue to the tune of 13 points! The find of the evening was Buzz Tracy, the sparkplug of last year's freshman team, who suddenly began to flash as of yore to score 12 points.

Cryans and Hatch led the Wildcat attack with 13 and 11 points respectively.

Varsity Ski Team Goes To ISU Meet in Vermont

The varsity ski team will journey to Vermont Thursday to compete in the ISU Meet at Norwich University which will be held Friday and Saturday.

Each college and university is limited to an eight-man team and to four entries in each event. Coach Ted Curtis has entered a strong and well-balanced eight-man team in Bill Bower, John Bower, Oscar Riddle, Forest Whitman, Ralph Woodbury, Leon Greene, Dave Greenwood, and Bill Chandler.

However, the powerful squad has been crippled appreciably by "rushing" and the lack of practice will be a handicap. Coach Ted Curtis' big worry now is the inability of any member to compete which would throw his balanced team out of equilibrium.

The events listed for the meet are: downhill, slalom, jump, cross country, and the combined event. In the downhill event Bill Bower, John Bower, Oscar Riddle, and Forest Whitman will perform for Maine.

In the slalom, Bill Bower, John Bower, Oscar Riddle, and Ralph Woodbury are entered.

The ski jump will feature Bill Bower, John Bower, Leon Greene, and Dave Greenwood for Maine.

Bill Chandler, Greene, Bill Bower, and John Bower are entered in the cross country.

Maine's entry in the combined event are Bill Bower, John Bower, Oscar Riddle, and Leon Greene.

Distance Events Are Pale Blue Stronghold

By Warren B. Randall

Colby will be host to the Maine track team this week-end, but they will find the visiting Bear acting contrary to Emily Post, for Coach Chester A. Jenkins has predicted that his men will make up for the loss to New Hampshire last Saturday. Colby lacks the concentrated strength that the Wildcats had, so there will be none of the disastrous sweeping of events that beat Maine.

The weight events, the shot put and the hammer and discus throws were held this afternoon in Orono, so Maine should have a substantial lead already. Johnson, Bennett, and Serota probably swept all nine points in this event, with Hal Dyer taking first in both of the other events. Hodges, of Colby, state outdoor shot put champion, may have won that event, however. At any rate, Maine should have about a ten point margin by now.

McCarthy in High Hurdles

Colby's only chance for an upset lies in her piling up a big lead in the dashes, hurdles, and the broad jump. Cochrane and Daggett should finish one-two in both the 40 yard dash and the 300 yard run. Bill McCarthy will give Burnham and Thompson a scrap in the high hurdles.

In the broad jump Daggett and Burnham both look better than McCarthy. If Daggett is in good form, he should jump better than 23 feet.

The situation will be completely reversed in the longer races. Ehlrbach, Smith, Blaisdell, Whicher, and Butterworth give Maine an almost overwhelming superiority. Chase and Card are the only opponents likely to score in the 600, 1000, mile, or two mile runs.

In the high jump McCarthy is better than Thompson, and Dexter is likely to beat the latter also. Herb Leonard will have little trouble in the pole vault, unless Johnny Daggett does much better than he did last week against Bates. Rich and Weaver, and possibly Dexter, are good for a few points in this event.

This meet will be watched with particular interest by fans who want a preview of the state championship meet in the spring. There is considerable doubt in the minds of many whether Maine can retain the title. However, the Pale Blue will not be at all strength. Fourteen men are on scholastic probation, and several others are ineligible.

The Maine and Colby freshman teams will also tangle on Saturday. This meet is something of a problem. The Frosh are weak, but Colby seems to be weaker. Graham should be good for firsts in the pole vault and broad jump, and a place in the high jump. Gilman is good for a first in the hurdles and the 40 yard dash. The longer races may see Colby fail to take a first place. Their only strength seems to be in the weight events, but Gorman, Susi, and others may prevail here too. At any rate, the Frosh will probably make it a double win for the Pale Blue.

Campus Camera By Lea



PHILLIPS FINLAY HARVARD, AVERAGED 290 YARDS ON 14 TEE SHOTS IN A ROUND AT PINEHURST, N.C. IN 1927



WHEN 20,000 HOMEWORKING BALLOONS WENT INTO THE AIR AT THE MINNESOTA-IOWA GAME LAST FALL, 17 TANKS OF HELIUM WERE USED TO SAFEGUARD SMOKERS! THE MINNESOTA HOMEWORKING COMMITTEE ABANDONED HYDROGEN BECAUSE OF DANGER, AND PAID \$500 FOR 20,000 INFLATIONS ...

BANGOR and ORONO M & P Theatres

OPERA HOUSE BANGOR Fri. & Sat. Don Ameche & The Ritz Bros. in a Musical Comedy "THE THREE MUSKETEERS"

BIJOU BANGOR Thurs. & Fri. Charles Ruggles, Mary Boland in "BOX TROUBLE"

STRAND ORONO Thurs. Feb. 23 Claudette Colbert in "ZAZA"

SOCIETY

Phi Eta Kappa Informal

Phi Eta Kappa entertained over fifty couples at an informal Saturday, February 18. Paul Monaghan and his orchestra furnished the music.

Mrs. Carrie L. Blanchard, Mr. and Mrs. Charles E. Crossland, and Mr. and Mrs. F. L. Lamoreau were the chaperons.

Those present included: Carolyn Reed, Edward Kozicky; Patricia Gogan, John Edmunds, Jr.; Juliet Sinclair, Sherwood Edwards; Marjorie Johnson, James Marr; Geraldine Demont, John Marsh; Virginia Maguire, Warren McNeil; Ella Glives, Arthur Axtell; Jane Treadwell, James Taff; Mildred Doak, Seth Thornton; Dorothy Cornell, Quenton Crandall; Marion Barker, Herbert Roberts; Frances Violette, Howard Ehrenbach; Alice Pierce, Charles Weaver.

Priscilla Tozier, Levi Dow; Esther Soucie, William Hamilton; Marjorie Weick, Donald Kilpatrick; Ruth Leavitt, Kermit Cotes; Sue Rose, Earle Bessey; Mary Upham, William Rader; Ruth McClelland, Donald Huff; Eleanor Dougherty, James Ashby; Louise Sherman, Kenneth Young; Regina Bouchard, George Roben; Evelyn Spencer, Alfred Brundage; Emily Blake, Alton Clark; Glenna Johnson, Donald Smith; Sarah Barter, Morrill Sateamb.

Dorothy Phair, Thomas Owens; Margarete Steinmetz, Henry Murdock; Ruth Warren, Kenneth Burr; Rachel Kent, Kenneth Clark; Margaret Bell, Donald McCoun; Katherine Sylvester, Carol Davis; Doris MacLaughlin, Joseph Harrington; Barbara Gowen, Lloyd Duggan; Margaret Gould, James Dow; Davy Emery, William Talbot; Barbara Young, Raymond Gay; Cherie Thorne, Gerald Elliott; Barbara Woodman, Frank Smith.

Helen Culberson, John Dow; Elizabeth McAlary, Kenneth Robertson; Marie Pousland, Robert Merrill; Phyllis Meserve, Angus Humphries; Margaret Beason, Albert Ellingson; Helen Maling, Russell Johnson; Margaret Orser, Gordon Murray; Elaine Benjamin, Harris Whitehead; Mary Ferrar, John Towle; Carrie Davis, Harvard Whitten; Hilda Rowe, William Treat; Margaret MacGregor, Bruce Mackay; Margaret Peaslee, Robert French; Leon Breton, Florence Atwood.

Sigma Nu Informal

Sigma Nu held its winter informal last Friday evening with Rudy Wallace furnishing the music.

The chaperons were Professor and Mrs. Rising L. Morrow and Professor and Mrs. W. H. Starr.

Other guests included: Professor and Mrs. Matthew Highlands; Professor and Mrs. John Stewart; Edward Anderson, Kathleen Duplisse; Bertram Blanchard, Lorraine Le Blanc; Darrell Pratt, Esther Thompson; William Perry, Virginia Stevens; Benjamin Ela, Jeannette Lamoreau; Robert Cummings, Marion Norwood; Earle Pierce, Paula Goodin; Simpson Libby, Barbara Perry; Paul Danforth, Margaret Conners; Gordon McKay, Carolyn Rogers; Christopher Fallon, Hope Chase; Ralph Pipes, Corinne Comstock; Stewart Oakes, Margaret Peaslee; Donald Bither, Dolores Peters; Hugh Murphy, Estelle Lawrence;

Phi Mu Delta Informal

Phi Mu Delta held an informal dance Friday, February 17, with music by Watie Akins.

Chaperons included: Professor and Mrs. Benjamin C. Kent, Professor and Mrs. Maurice D. Jones, and Mrs. Ada S. King, house matron, escorted by Carroll Morse.

The couples present were: Malcolm Roberts, Muriel Murphy; Bernard Robbins, Marion Fitzgerald; Roger Stearns, Eunice Gale; Parker Small, Margaret Cheney; Nathaniel Crowley, Jeannette Sanborn; Clifford Blake, Isabella Garvin; Robert Graves, Elizabeth McAlary; Edward Marsh, Elizabeth Gannons; Clifford Stevens, Anna Verrill; Elwood Millett, Constance Young; Chandler Briggs, Margaret Sawyer; Horace Gardner, Elizabeth Homans; Carleton Merrill, Constance Philbrook; Arthur Boyd, Olive Bouchard; Blaine Hodgkins, Lucille Maddocks; Allan Howe, Ella Teague; Paul Browne, Lucy Cobb; Robert Browne, Mary Scribner; John Harris, Kathleen Boyle; Merrill Carter, Helengrace Lancaster.

Angus Humphries, Regina Bouchard; Thomas Barker, Barbara Corbett; William Cooke, Jane Dyer; Robert O'Keefe, Ruth Wooster; Hartwell Lancaster, Ruth Pike; David Hopkinson, Ruth Peabody; Wesley Martin, Angelica Dillingham; Howard Kenney, Margaret Maxwell; Reid Millar, Helen Bartlett; Robert Millar, Joan McAllister; Merwin Marston, Frances Sawyer; Howard Gardner, Lucille Fogg; John Perry, Priscilla Thomas; Frederick Robie, Helen Bond; Harry Nelson, Priscilla Bickford; Albert Frost, Charlotte Lunt; Everett Thompson, Lois Stone; and James Harris, Barbara Ashworth.

Theta Chi Informal

Theta Chi held its informal Friday, February 17, with music furnished by Lloyd Raffnel. The chaperons were Mr. and Mrs. Theron A. Sparrow and Mr. and Mrs. Howard P. Leberg.

Those present included: Melvin McKenzie, Frances North; Thomas Kane, Marianne Russell; Kenneth Grinnell, Annie Ross; Kendrick Hodgdon, Emily Rand; Robert Shearson, Edith Jacobs; Paul Beegal, Mary McConnell; Clarence Perry, Priscilla Haskell; Frederick Libby, Anna Perry; Wentworth Knowlton, Virginia Rourke; Charles Patrinnellis, Hope Moody; Joseph Barry, Hazel

John Towle, Marjorie Coffee; George Cunningham, Barbara Doran; John Earnshaw, Jr., Natalie Chandler; Carleton Clark, Doris Currie; Arthur Boyd, Olive Bouchard; Reid Russell, Evangeline Anderson; Oscar Martin, Constance Flowers; Bernard Hanigan, Ruth Leavitt; Charles Shackelford, Elizabeth Brown. James McCain, Kay Brunnell; John Houghton, Velma Gray; Clifford Daigle, Dora Higgins; Robert Rich, Naomi Blake; George Mullin, Rita Seekins; Robert Beaton, Margaret Logan; Richard Hersey, Julia Beal; Theodore Stone, Marion Libby; Thomas Pinkham, Katherine Daley; James Reilly, Priscilla Hayes; and Richard Franz, Ruth Virgie.

Beta Theta Pi Tea Dance

Beta Theta Pi had a tea dance and buffet supper last Saturday afternoon. Music was furnished by Paul Monaghan and his orchestra. The chaperons were Dean and Mrs. Paul Cloke; Dr. and Mrs. R. L. Morrow; Mr. and Mrs. Rex Buzzell.

Other guests were: Clark Kuney, Julia Warren; Charles Gardiner, Virginia Moulton; Paul Galentine, Pauline Reilly; John Robie, Mary Cooper; Samuel Dyer, Margaret Moulton; Currier Treat, Barbara Welch; Artemus Weatherbee, Pauline Jellison; Robert Burleigh, Eleanor Dougherty; Richard Chase, Frances Bickford; Francis Brieger, Mary Flannagan; Roderick Gardner, Eunice Gale; Russell Belknap, Ella Glienes.

Malcolm Loring, Geraldine Watson; Richard Quigley, Madeline Banton; Laurens Parkman, Elizabeth Kruse; Miles Mank, Eleanor Look; George Nystrom, Dorothy Wing; William Mussenden, Ruth Worcester; Harlan Turner, Ruth Garrison; Thomas Nickerson, Marion Fitzgerald; John Littlefield, Katherine Piper; Harris McClain, Isabelle Crosby; Warren Fish, Margaret Phillips.

Stephen Hamlin, Dorothy Davis; Faulkner Chase, Lucille Bell; Allen Tarbell, Marjorie Thornton; Roger Cotting, Mary Cooper; Gordon Chase, Janice Merrill; Lester Tarbell, Elvora Savage; Alton Keyes, Elizabeth Mulholland; Ion Malcom, Kathryn Ingalls; Owen Wentworth, Madeline Hanson; Joseph Ingham, Kathleen Duplisse; Maurice Burr, Jane Burr; Samuel Tracy, Helen Philbrook; Harold Schute, Pauline Brown.

A regular meeting of the Education Club was held Thursday evening, February 16, in the faculty room of Stevens South. A discussion was held as to sending a representative to a meeting in New York. A social program was presented under the direction of Kappa Delta Pi, honorary education society. Refreshments were served.

Curran; Timothy Curtin, Frances Griffin.

Donald Saunders, Patricia Smith; Gordon Chapman, Jean McDonough; Linwood Day, Alice Smith; Raymond Gill, Dorothy Randall; Vincent Calvo, Miriam Adasko; Raymond Calvo, Alice Roth; Carl Blom, Helen Doran; Duncan McDonald, Beatrice Morris; William Perry, Virginia Stevens; Paul Cote, Barbara Gallagher; James Connolly, Mildred Williams; Baxter Willey, Almeda Sawyer; Mr. and Mrs. Manley Bemis.

PLAY DAY

(Continued from Page One) Registration at Balentine. 5:45 p.m.—Dinner at Balentine. 7:00 p.m.—Program registration. 8:00 p.m.—Roller skating party, Alumnae Gym.

Saturday, Feb. 25 7:15 a.m.—Breakfast at Balentine, Colvin 8:00-8:30 a.m.—Campus inspection tour. 9:00 a.m.—Bus leaves Balentine for Etna winter sports outing. If the weather is bad, games will be played in Alumnae Gym instead.

1:00 p.m.—Luncheon at Etna followed by discussion of girls' athletics. 4:00 p.m.—Return to campus. 6:30 p.m.—Bus leaves Balentine for Old Town.

7:00 p.m.—Formal banquet at the White House, Old Town.

The committee in charge of arrangements consists of: Ferne Lunt, general chairman; Margaret Hoxie, program chairman; Madge Stacy, registration; Marjorie Deering, luncheon; Alice Ann Donovan, banquet; Beatrice Gleason and Agnes Walsh, hospitality.

MUSIC BOX

(Continued from Page One) and Thursdays at 4:15 p.m.

The programs will be of varied nature and include personal requests. The latter should be written and also should designate the day for which the choice is desired.

The requests may be passed in during the concert periods or left at the Music Department office, 15 Stevens North, at other times.

Sigma Alpha Epsilon held a house party Friday night with Paul Monaghan and his orchestra supplying the music. Chaperons were Major and Mrs. Harry Hencke, Captain and Mrs. George Loupret, Prof. and Mrs. George McReynolds, and Prof. and Mrs. Reginald Hobbah.

Those present were: Shirley Mitchell, John Finks; Neva Sylvester, Eugene Mertens; Florence LaPlante, Benjamin Shaw; Virginia Thornton, Harold Higgins; Dorothy Hill, Ronald Hawkes; Norma Nelson, Shirley Sweet; Charlotte Dimitre, William Brann; Eleanor Look, Albert Bahrt; Helen Thordike, Sidney Griffith; Elizabeth Saunders, Homer Oaksford.

June Phelps, Eugene Gilbert; Mr. and Mrs. Ralph Smith; Virginia Curtis, Paul Wyman; Margaret Orser, Albert Toner; Evelyn Spenser, Gerard Goulette; Elvora Savage, George Grant; Pauline Reilly, Malcolm Loring; Marjorie Moulton, Charles Arbor. Laura Chute, George Temple;

SNOW SCULPTURES

(Continued from Page One) Tau Delta's carving depicted a skier going down a hill. The insignia of all the fraternities were carved on the background.

Phi Eta Kappa carved a bas relief of a skier, while a black bear above a base of a blue M was fashioned by the Elms, girls' dormitory, South Hall, another girls' dormitory, sculptured Wimpy eating a hamburger. Theta Chi's sculpture was of a Greek scene with the Greek letters of the fraternity carved in front. Alpha Tau Omega modelled an ice house, while a loving cup was sculptured by Colvin Hall.

The judges were: Professors Benjamin Kent, Reginald Hobbah, Harry Watson, and Miss Marion Rogers.

McMICHAEL

(Continued from Page One)

members of the Maine Liberal Club and other individuals have also been invited. All day Feb. 27, Jack McMichael will be available for conference with interested students in the Christian Association lounge.

Mr. McMichael was sent to China as a representative of the National Student Christian Movement with which the M.C.A. is affiliated, of the National Student Federation of America, and of the United Student Peace Committee, which plans nationally the annual spring peace assemblies. He was delegated to bring to Chinese students the support and sympathy of American students, in their struggle to throw off Japanese invasion.

Since his return less than three months ago, he has visited an average of a college a day throughout the U. S. Jack McMichael, Emory '37, is one of the most outstanding student leaders to arise from the Student Christian Movement in recent years. Last year he was co-chairman of the quadrennial National Assembly of that movement and one of its representatives on the World Student Christian Federation.

Jack McMichael will meet with an informal group to discuss the Japanese invasion of China at 4:00 p.m., Monday, Feb. 27, in M.C.A.

Thelma Edes, Russell Woolley; Margaret Phillips, Frederick Tracy; Elizabeth Libbey, Philip Temple; Margaret Cliff, Richard Chase; Barbara Hill, Earle Ingalls; Mr. and Mrs. Keith Smith; Margaret Benjamin, Blake Smith; Virginia Burke, Francis Lovering; Nellie Lewis, Edward Weed; Calista Buzzell, Dwight Brown; Rosemary Durick, Robert Cail; Jane Page, Frank Collins; Frances Rhoda, Donald Moore.

PLEDGING

(Continued from Page One) Roche, Donald P. Ross, Earle Stuart Smith, George H. Smith, Stuart F. Svedeman, William B. Talbot, Fred S. Tarbox, E. P. Thompson, Jr., Howard G. Tukey, Spaulding M. Tukey, R. David Wallace, Frank L. Wellcome, Jr., and Gordon H. Winters.

Lambda Chi Alpha

David A. Adams, Gerald W. Bachman, Clinton L. Bardo, Bryant C. Bean, Gordon C. Blanchard, Elliott Bouis, George H. Buck, William M. Christensen, Jr., Richard D. Dole, Maynard G. French, William G. Hepburn, Robert F. Hillier, Hulet C. Hornbeck, Donald K. Johnson, James L. Morrison, George A. Mullin, Clarence S. Nichols, Jr., Carleton W. Nowell, Allen H. Pulsifer, J. Herbert Roberts, Thomas T. Sleeper, Donald E. Stuart, Richard L. Warren, George W. Waterman, Charles F. Welch, Roger E. White, and Stephen E. Woodbury.

Phi Eta Kappa

Arthur G. Axtell, Bertrand E. Blanchard, Kenneth S. Blanchard, Frank E. Brewster, William R. Bucknam, Richard L. Chick, Alton W. Clark, Edward C. Cox, Jr., Donald M. Kilpatrick, E. Reid Millar, Robert R. Millar, Henry T. Murdock, George C. Slocum, Keith M. Thompson, Myron J. Towle, Harris G. Whited, and Fred M. Willetts.

Phi Gamma Delta

John R. Anderson, Ralph O. Dale, Jr., Robert A. Dalrymple, John W. Eldridge, Christopher Fallon, Laurie J. Greenleaf, William L. Irvine, Alton W. Johnson, John F. Keenan, Joseph N. Mullen, John J. Suslavich, and Arthur L. Teal.

Phi Kappa Sigma

Robert V. Bowser, George O. Chase, Richard Cranch, Donald H. Davis, Robert B. Deering, Donald E. Dorr, Paul Ehrenfried, Richard O. Franz, Morrill A. Gatcomb, Benjamin F. Graham, Titus S. Hale, Jr., Joseph S. Higgins, Mark W. Ingraham, Jr., Waldemar W. Littlefield, John W. Medina, Thomas F. Moore, Warren B. Randall, Austin E. Rankin, Jr., Harold T. Stanton, Jr., Harold E. Warren, and Donald E. Weston.

Phi Mu Delta

Clifford A. Blake, Arthur Boyd, Chandler A. Briggs, Robert I. Browne, Wilfred Butterfield, Jr., Nathaniel J. Crowley, Carrol D. Davis, Charles A. Guard, Arthur A. Henderson, Gerard Hodgkins, David B. Hopkinson.

Allan M. Howe, Robert E. Kelley, Richard McNeilly, Frederick A. Mitchell, Robert E. O'Keefe, Raymond E. Ramsey, Reginald T. Roberts, Preston E. Robinson, Parker W. Small, Albert B. Soule, and Peter C. Verenis.

Sigma Alpha Epsilon

William R. Beckmann, Wendell T. Butler, William B. Clark, Richard H. Coffin, Robert A. Elwell, John D. FitzPatrick, John E. Fink, Wallace R. Francis, Alvin R. Goldsmith, Earl L. Hodgkins.

Charles J. Keniston, Clarence W. Jones, Joseph Karczmarczyk, Booth G. Leavitt, Eugene G. Mertens, Parker N. Moulton, Jr., Paul E. Murphy, Richard W. Whitney, and Raymond E. Wilson.

Sigma Chi

Francis S. Andrews, Charles S. Benjamin, Jr., Milton T. Bodman, Bevan G. Cass, John M. Dillon, Lawrence W. Emery, Robert J. French, John W. Glover, Jr., John C. Gorman, Donald G. Griffice, Robert G. Holmes.

John Houston, Edward S. Keirsteads, John H. Mayo, A. William Reggio, Jr., Robert F. Roy, Francis V. Schmidt, Richard M. Sinclair, Robert E. Small, Vincent Smith, Edward R. Tanner, Edward A. Weed, Jr., and Ralph E. Woodbury.

Sigma Nu

Robert J. Beaton, Paul D. Danforth, Richard W. Hersey, Donald H. McKay, Howard W. Merrill, William L. Perry, Darrell B. Pratt, Theodore M. Stone, and Arthur R. Worster.

Theta Chi

Paul M. Beegel, Jr., Kenneth P. Grinnell, Richard B. McGraw, Lyle Martin, and Franklin S. Wescott.

Tau Epsilon Phi

Arthur Bigelson, Jozef B. Cohen, Jordan Dobrow, Robert M. Feinberg, Stanley P. Freedman, Harold Garfunkle, Saul Ginsberg, Aaron S. Hurwitz, Harold I. Kaplan.

Henry H. Lipman, Victor E. Levene, Bernard Low, David Maurice, Bernard P. Rome, Edward A. Schretzer, and Jack I. Stahl.

More than a million words have been written and broadcast by Drake University students during the last four and a half years. (A. C. P.)

YOU WILL FIND IT AT PARK'S HARDWARE and VARIETY 31-37 MILL ST. ORONO

ORDER YOUR CORSAGES

from Bangor Nursery Flower Shop

Bob Bramhall, Agent Beta House

Campus Camera By Lea

HEY GUARD! WHO WROTE "FOUR WALLS DO NOT A PRISON MAKE?" SEVERAL PRISONERS AT ALCATRAZ PRISON, WHICH HOUSES THE TOUGHEST FEDERAL CRIMINALS, ARE TAKING CORRESPONDENCE COURSES FROM THE UNIVERSITY OF CALIFORNIA! O.K. FOR METHUSELAH IT WOULD TAKE 503 YEARS FOR ONE PERSON TO COMPLETE ALL OF THE COURSES NOW BEING OFFERED BY YALE UNIVERSITY!

VELOZ and YOLANDA in their famous "Dance of the Cigarette" with Chesterfield THE HAPPY COMBINATION (perfectly balanced blend) of the world's best cigarette tobaccos Chesterfield's can't-be-copied blend of mild ripe American and aromatic Turkish tobaccos gives you all the qualities you like in a smoke . . . mildness, better taste, and pleasing aroma. When you try them you will know why Chesterfields give millions of men and women more smoking pleasure . . . why THEY SATISFY They Satisfy . . . the can't-be-copied blend . . . a HAPPY COMBINATION of the world's best cigarette tobaccos Copyright 1939, LIGGETT & MYERS TOBACCO CO.