

The University of Maine DigitalCommons@UMaine

Sanborn Maps of Maine

Special Collections

1914

Ellsworth, 1914

Sanborn Map Company

Follow this and additional works at: https://digitalcommons.library.umaine.edu/me_sanbornmaps

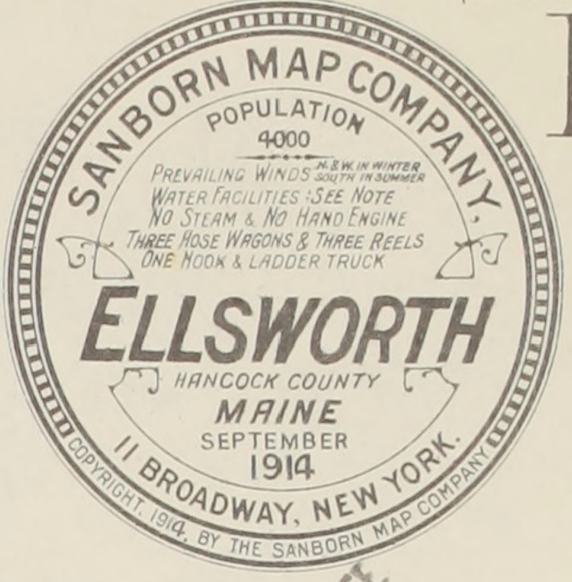


Part of the [Geography Commons](#), and the [History Commons](#)

Recommended Citation

Sanborn Map Company, "Ellsworth, 1914" (1914). *Sanborn Maps of Maine*. 106.
https://digitalcommons.library.umaine.edu/me_sanbornmaps/106

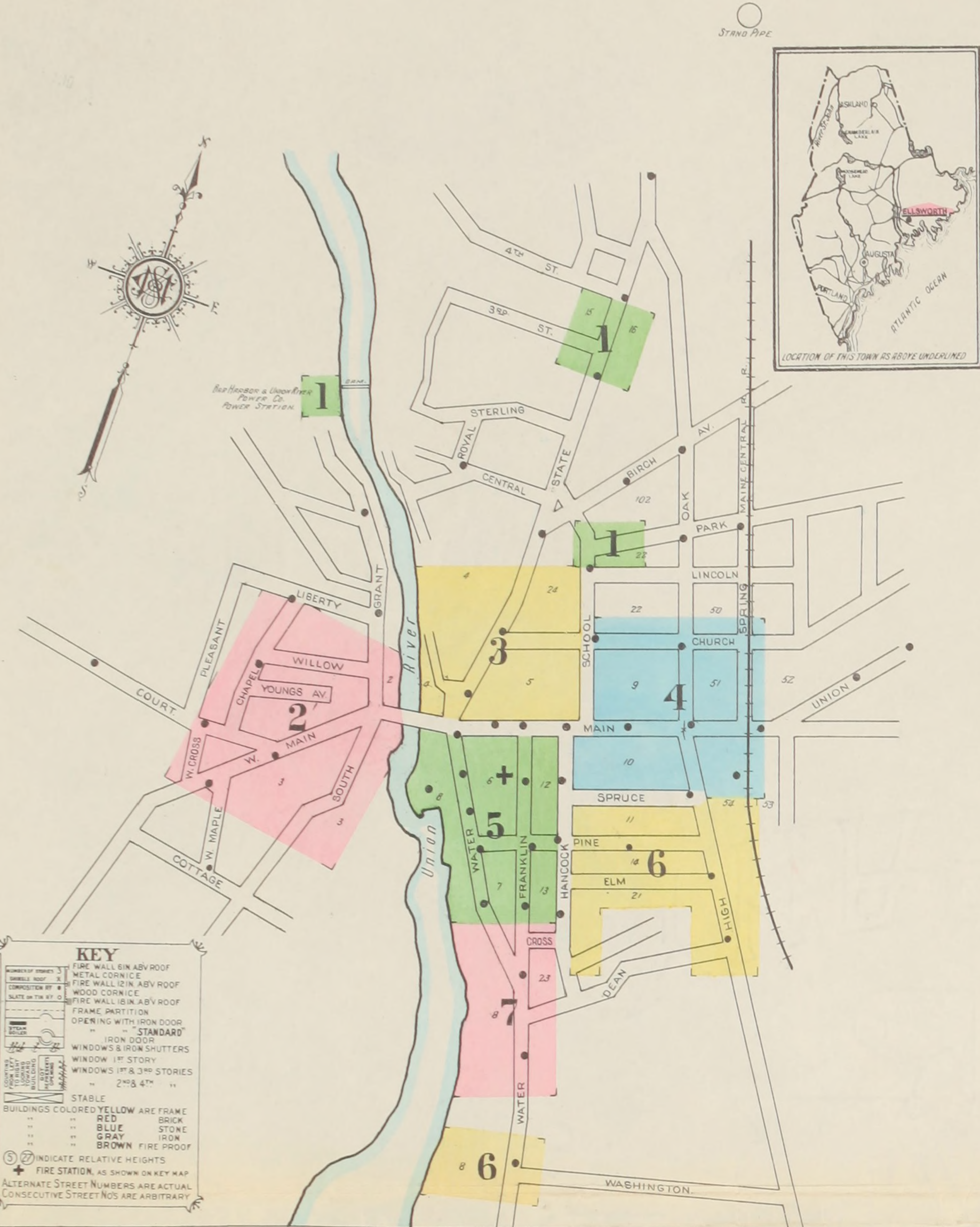
This Book is brought to you for free and open access by DigitalCommons@UMaine. It has been accepted for inclusion in Sanborn Maps of Maine by an authorized administrator of DigitalCommons@UMaine. For more information, please contact um.library.technical.services@maine.edu.



WATER FACILITIES:
Water works owned by Bar Harbor & Union River Power Co. Gravity system from 300,000 gallon stand pipe 1/2 miles North of Post Office. Base of stand pipe is elevated 175 above same. Supply pumped from Branch Pond Stream to stand pipe by Deane duplex electric pump 18" x 12" x 14" capacity 1 million gallons per 24 hours. Laidlaw-Dunn-Gordon pump 16" x 9" x 12" in reserve, capacity 720,000 gallons per 24 hours. Pressure at Post Office 100 pounds. Average daily consumption 625,000 gallons. 8 miles 4" to 10" pipe, 57 hydrants.

FIRE DEPT.:
Chief, 2 assistants, 2 companies, 2 permanent men, 2 horses, 20 call men. 1 ladder truck, 3 hose wagons, 3 hose reels, 6000' 2 1/2" hose in good condition. 6 hand chemical extinguishers. Fire alarms: bell on fire stations.

Topography: hilly. Streets: not paved. Public lights: electric. No fire limits.



INDEX

STREETS	SHEET	M	Y	H
B				
Bangor Road, at Ellsworth Falls,	8	Main, 1-183 *5	Youngs Ave., 1-24	Hancock Hall, 3
		" 2-190 *3		" House, 2
		" 185-191 *4		High School, 2
		" 192-247 *4		
Chapel, 1-44	2	" at Ellsworth Falls, 4		
Church, 1-26	3	" W., 1-80		
Court, 27-84	4	Maple, W., 2		
Cross, 1-24	2	Mill, at Ellsworth Falls, 2		
" W., 1-10	7			
D				
Dean, 1-56	7	Oak, 1-30		
" 57-70	6			
E				
Elm, 1-44	6			
F				
Falls (arbit.), at Ellsworth Falls,	8	School, 1-29 *4		
Fourth, 1-14	1	" 2-48 *3		
Franklin, 1-144	1	" near Park 1		
" 145-168	7	South, 1-40		
		Spring, 4		
		Spruce, 4		
		" 1-39 *6		
		" 2-40 *4		
		State, 1-84		
		" 135-170		
G				
Grant, 1-22	2			
H				
Hancock, 1-53 *5				
" 2-18 *4				
" 20-68 *6				
" 55-81 *7				
High, 1-17	4			
" 18-73	6			
L				
Liberty, 1-30	2			
Lincoln, see Park.				

NOTE.—House Numbers given are arbitrary.

