

Fall 12-10-1959

# Maine Campus December 10 1959

Maine Campus Staff

Follow this and additional works at: <https://digitalcommons.library.umaine.edu/mainecampus>

---

## Repository Citation

Staff, Maine Campus, "Maine Campus December 10 1959" (1959). *Maine Campus Archives*. 2569.  
<https://digitalcommons.library.umaine.edu/mainecampus/2569>

This Other is brought to you for free and open access by DigitalCommons@UMaine. It has been accepted for inclusion in Maine Campus Archives by an authorized administrator of DigitalCommons@UMaine. For more information, please contact [um.library.technical.services@maine.edu](mailto:um.library.technical.services@maine.edu).

# THE MAINE CAMPUS

Published Weekly by the Students of the University of Maine

Vol. LXI Z 265

Orono, Maine, December 10, 1959

Number 13

## Motion Passes For Formation Of Soccer Team

The Athletic Department will be asked by the Student Senate to consider the formation of a soccer team playing an intercollegiate schedule. Meeting last week, the Senate approved the proposal to establish a soccer team made by Senator Ron Drogin.

After tabling the issue for two weeks in an effort to learn student opinion, the Senate voted in favor of the motion. The bill will now be presented to the Administration and will then pass on to the Athletic Department for final approval. The Senate has appointed Senators David Baribeau, Larry Schiner, and Drogin, chairman of the committee, to work with the Athletic Department on the soccer proposal.

Problems to be met before the final formation of a team concern playing area, equipment, finance, and coaching. The Senate has been assured of student interest in the sport. Many other colleges in this area have already incorporated the sport into their athletic programs.

Acting on a motion passed previously by the Senate, the Committee on Administration has asked Comptroller Prescott Vose to look into the Senate recommendation for paying student employees at the University twice monthly. Vose plans to discuss with major student employers the amount of work involved in preparing two payrolls instead of one, and the effort required by the treasurer's office in doing so. He will also find out just how many students are involved, and will report at the next meeting of the Administrative committee.

The Senate passed a motion calling for \$75 to be placed in a standing fund for the Leadership Conference. This money was left over from the amount originally scheduled to be used this year.

## Find Faulty Date On Class Rings

Students who have received their official University class rings may have to turn them back to the company as it has been discovered that part if not all of the rings have the date 1885 rather than 1865 as the founding date of the University.

Joe Dion, chairman of the Senate Ring Committee, announced this week that the L. G. Balfour Co., manufacturer of the ring, is willing to correct the situation at their own expense. Students who have faulty dating on their ring should either send it to the Balfour Company, Attleboro, Massachusetts, or give it to the company representative who will be on campus January 12 and 13.

Dion said the company was "extremely sorry" about the situation. All rings sent to be corrected will be returned by special delivery. Any rings currently ordered but not delivered will be corrected before being shipped from the factory.

Students who have rings are urged to check them to see if the founding date is correct.



Pictured above are the Phi Kappa Phi initiates; left to right first row, J. Torrey, B. York, M. Libby, M. Zoidis, P. McGuire, L. Hoyt, A. Robbins, N. Waisanen, J. Lawlor. Second row are A. Gordon, C. Allen, L. Agathos, A. Harris, B. Connor, J. Cost, D. Ireland, R. Dunlop, and M. Carsley; third row, W. Shirley, G. Booth, J. M. Weinberg, R. Williams, M. Shibles, Jr., D. Lewis, G. Fenderson, M. Birge, R. Rowe, T. Morehouse and D. Mathieu.

## 'The Pajama Game' Is Great

By Glenn Philippon  
*Campus Theatre Critic*

Last night the Maine Masque Theatre presented its second play of the year, the colorful musical comedy, "The Pajama Game." The play is based on the novel, "7½ Cents," by Richard Bissell with music and lyrics by Richard Adler and Jerry Ross and book by George Abbot and Bissell. Professor Herschel L. Bricker directed the play with the assistance of Professor Lewis H. Niven as music consultant.

The plot is basically one of a labor vs. management hassle over a "7 and a ½ cent" wage increase. Naturally, such a perfectly simple matter is complicated by Grievance Committee Chairman, Babe, falling in love with the Superintendent, Sid. A union picnic and parties brighten the otherwise dull lives of the garment factory employees—and their employers. As time expert Hines puts it, "It's loaded with symbolism. . . . It takes the sting out of the sex."

It was this critic's unusual pleasure to attend the dress rehearsal rather than the customary opening night. In view of that fact, this is more of an educational(?) article than a critical analysis. As early as the Monday night rehearsal, yours truly counted only three out and out blunders. These were usually met with muttered curses from the offenders. As all too frequently happens in musicals during solos and duets the perform-

ers don't seem to know what to do with their hands. By the ends of the songs they seem to have something to do with them, though. Symbolism, no doubt.

The rehearsal was scheduled for 6:45 p.m., Monday. The cast assembled with high spirits and immediately plunged into heartfelt renditions of selections from "Oklahoma." There followed impromptu dancing by virtually all members of the cast (no mean trick on that stage) and a little hot piano provided by Ellie Benway.

Officially the rehearsal began twenty minutes late. Only the music, lyrics and dances changed. Spirits remained high throughout the play. Hines, played by Mike Dolley opened the show and again displayed his talents as a comedian. From there the show ran smoothly through the first act. Only one minor traumatic experience occurred—there were not enough caps for the gun.

At the end of the act, the lights went on, the cast relaxed in theatre

seats and the several directors mounted the stage. Criticisms seemed to fall into the "You were great—but, you can be the greatest!" Director Herschel L. Bricker's legendary phrases, "Don't let down," and "Keep working on it straight through Saturday night's performance," rang out. "It's beginning to sound like a musical comedy" were his greatest words of praise.

Privately, Bricker did say that he was pleased with the progress. He added that the cast is "great to work with . . . agreeable, full of pep and good workers."

After a short rally involving the usual cheers and applause, rehearsal continued with the second act. Hats off to choreographer and dance director, Cal Thomas, in this act, as well as the previous one, for his dances to "Steam Heat," "Hernando's Hideaway," and "The Pajama Game." The dances are lively, smooth and well executed. Diane Wiseman, as Gladys,  
*(Continued on Page Twelve)*

## Faculty Salaries Increase 9% Over Previous Years

By Ron Drogin

Salaries of faculty members at the University have increased 9% this year. The pay raise resulted from enlarging funds allocated to the University by the State Legislature amounting to an additional \$500,000.

Prescott Vose, Controller, told the *Campus* that the recent raise in student tuition would allow for at least another modest increase for faculty salaries next year. Vose said that the University would raise approximately \$500,000 over present funds due to the tuition hike and a recent legislative allotment.

The average faculty salary is now \$6511, an increase of \$554 over last year. According to figures released by the Controller, professors are being paid \$8,260, an improvement of \$637 over 1958-59. Associate professors received a raise of \$538 giving them \$6,757. An additional \$400 resulted in assistant professors being paid \$5,882, while instructors saw their salaries rise from \$4,581 to the level of \$4,916. These salaries are all averaged on an academic year basis. An additional \$225,000 is now be-

ing spent on faculty salaries according to Vose. About 220 faculty members on a yearly academic basis have been affected by the increase.

Many reasons were cited to the Legislature for the increased faculty salaries. One of these concerned the difficulty in recruiting teachers because of the lower salary paid by the University as opposed to other colleges and universities. Maine lost 128 faculty members in 4 years, and much of the blame for that trend had been attributed to the salaries which lagged \$1,273 on the average behind 16 nearby New England colleges and universities in 1957-58.

Concerning the recent tuition hike, Controller Vose said that much of the new funds would go into faculty salaries. He said that since college budgets are greater than student tuition, it is possible in that sense for tuition to go to salaries alone.

## Vespers Will Set Mood For Holidays

A chorus of 104 voices and a 26 piece orchestra will provide holiday gaiety for students at the annual Christmas Vespers, December 13 at 4 p.m. in the Memorial Gymnasium.

The program for the afternoon includes the processional hymn *Adeste Fideles*, with the glee club and orchestra, and *Ave Maria* by Rachmaninoff, sung by the glee club.

*The Christmas Oratorio* by Bach will feature Sandra Sylvester, Leo Daniels, and Alden Grant, Jr., as soloists. The University glee club will also sing a group of Christmas Carols with Nancy Lou Small as soloist.

A brass quartet of students will play three selections, *Noel Suisse* by Daquin, *Magnificat* by Pachelbel, and *In Dulci Jubilo* by Praetorius. The quartet is composed of Albert Elwell, Arthur Warren, trumpets; Anthony Culpovich, horn, and Patricia Blackett, baritone.

Two pieces by Prof. William A. Sleeper, Jr., of the University of Maine Music department, are to be sung.

*Cradle Song*, written in antique style, was composed while Professor Sleeper was doing graduate work at the Eastman School of Music last year.

The second piece, entitled *Praise be to God on High*, was written about four weeks ago, expressly for the Glee Club, to whom it is dedicated. This selection, in contemporary style, is described by competent music authority as brilliant and exciting.

Two pieces by another Maine composer are included in the program. Supply Belcher, though born in Massachusetts, settled in Farmington, Maine, after returning from the Revolution. In a short time he became a prominent citizen, teacher, and legislator. He completed a book, *The Harmony of Maine*, in 1794. The  
*(Continued on Page Twelve)*



**EUROPE TOURS  
ESCORTED AND  
INDEPENDENT**  
Individual Arrangements  
to suit your Budget  
**RESERVATIONS and TICKETS  
for AIR and STEAMSHIP  
TRAVEL ANYWHERE**  
**ALDEN F. HEAD  
TRAVEL BUREAU**  
61 Main St., Bangor, Tel. 2-5050

**TV Presents Christmas Program**

"The University of Maine and You" Juan Nicholas, a Cuban, will explain customs of his land. Tatiana N. Illyn and her son will speak on Russian Christmas.  
Assisting Mr. MacLaughlin will be Mr. William Draper of the University of Maine faculty.  
David Robinson will provide instrumental music, and vocal selections will be by the Maine Steiners, under the direction of Mr. Frank Morrison, and a group of four directed by Elizabeth England.

Patronize Our Advertisers

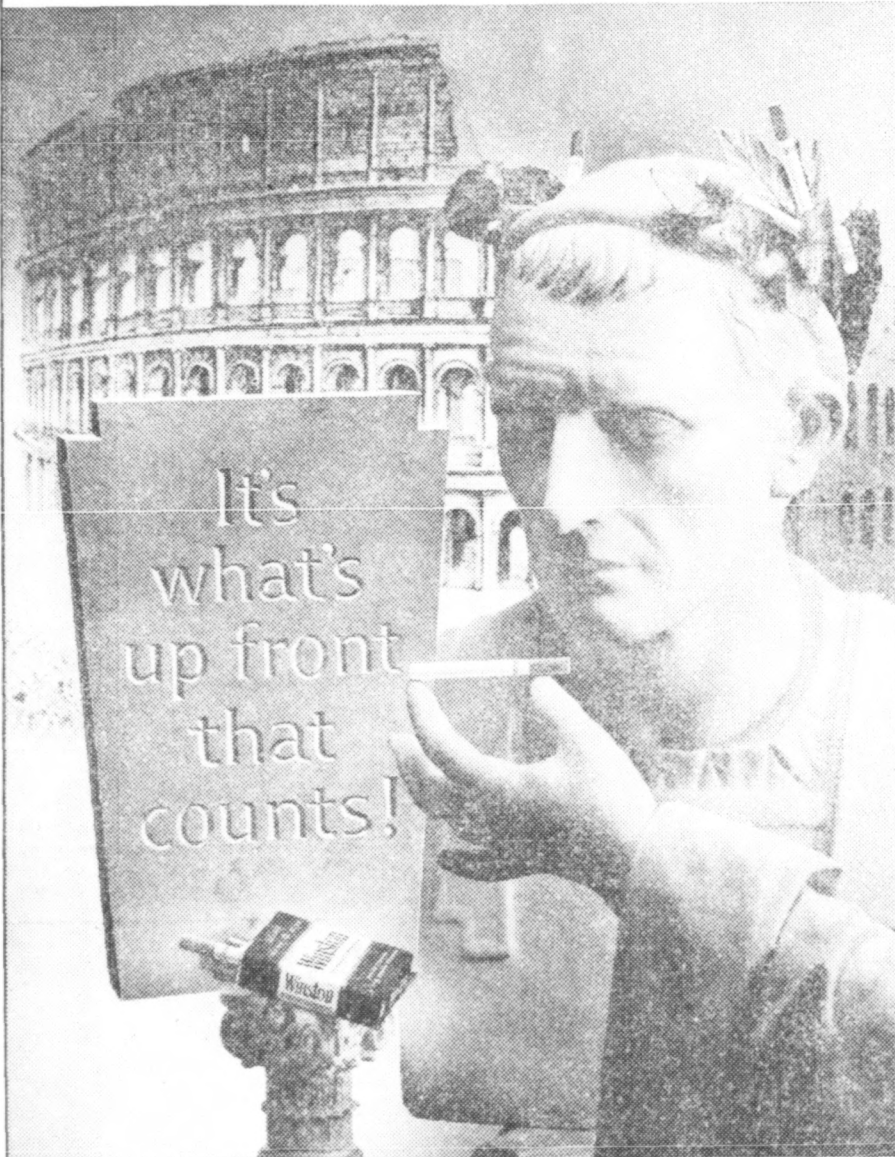
**Plans For Bowling Alleys  
And Kitchen Now Underway**

Architects are now drawing up plans for the completion of the second floor, bowling alleys, and kitchen in the Memorial Union.  
The plans for the second floor, which now houses the Hauck Memorial Fund office, include an alumni-faculty lounge and a faculty dining room in the south end. The north section will contain student organizational conference rooms, the Student Religious Association office, and a small chapel for students of all faiths.  
Other plans are for a bowling alley on the ground floor, and completion of the kitchen for the Bear's Den.  
The total cost of construction is estimated at \$375,000, including a gift of \$5,000 given by the bookstore toward the bowling lanes.  
The Union completion committee includes student members Barbara Burns, Larry Cilley, Nancy Morse, Lincoln Ravenscroft, and Stanley Chenoweth. Faculty and alumni mem-

**MCA And Canterbury  
Plan Campus Caroling**

Students from M.C.A. and Canterbury will meet at 7:15 p.m. Sunday night at the Union to participate in the annual Campus Christmas Caroling. All interested students are invited to join the group. After a tour of the campus, the group will go to the M.C.A. House for refreshments. The program will close with Evening song at the St. Thomas of Canterbury Chapel.

**All filter cigarettes are divided  
into two parts, and...**



**"Weni, widi, Winston!"** Thus did Caesar (a notoriously poor speller) hail the discovery of Filter-Blend—light, mild tobaccos specially selected and specially processed for filter smoking.

He knew that a pure white filter alone is not enough. To be a complete filter cigarette, it must have Filter-Blend up front. And only Winston's got it!

That's why Caesar would never accept another brand even when it was offered gratis. In fact, history

tells us he'd glower at the extended pack and sneer, "Ei tu, Brute?"

In a stirring peroration to his legions, Caesar put it this way: "For the Numeral I filter cigarette—for the best-tasting filter cigarette—for the noblest filter cigarette of all—smoke Winston!"

**"Winston tastes good like a cigarette should!"**

**P.S.** to bachelors. If you're lucky enough to find a gal who'll keep you in Winstons, Caesar!

R. J. REYNOLDS TOBACCO CO., WINSTON-SALEM, N. C.

**ELECTRICAL & MECHANICAL ENGINEERS**

**NORDEN DIVISION  
OF  
UNITED AIRCRAFT CORPORATION**

**...will be on campus**

**JANUARY 7 (THURSDAY)**

To Meet Graduating Electrical and Mechanical Engineers  
Interested in Research & Development Engineering

(UNITED STATES CITIZENSHIP REQUIRED)

Please Arrange in Advance  
Through Your Placement Office  
for Your Convenient Appointment  
with Norden Representatives

**CHOICE OF LOCATIONS**

**NORDEN LABORATORIES**

(White Plains, New York and Stamford, Connecticut)

Offers opportunity to do research and development engineering in diversified areas: Missile & Aircraft Guidance; Re-Entry Attitude Control Problems; Radar & Communications; Inertial & Stellar-Inertial Navigation; Data-Handling & Navigation-Stabilization Systems; Bomb Director Systems; and other electronic areas.

**MILFORD DEPARTMENT**

(Milford, Connecticut)

Offers opportunity to engage in development and design engineering of advanced precision instrumentation for application in air and space vehicles and missile systems, including All-Attitude Stable Platforms, Ultra-Resolution Position Encoders, Ground Support Equipment.

Norden now has under construction a new multi-million dollar engineering research and manufacturing facility in Norwalk, Connecticut.

**NORDEN DIVISION  
UNITED AIRCRAFT CORPORATION**

Descriptive Brochure Available upon Request

**70 Free  
Women  
To So**

The seven priorities pledge last week, ending period.

Alpha Chi Estabrooke, Keenan, Lindard, Paula Dorothy Shea

Alpha Om Louise Clark, wengler, Per Hoxie, Jo H Ladd, Joanne ter, Darlene Wright.

Chi Omega minister, An Elaine Farash reen Henry, McDonnell, Phillips, Mar Pat Small, Ju Vickery.

There are pledges: Moll Chapman, Sa ball, Evelyn K Judith London, McGuire, M Pratt, Jean I Smith.

New Delta Adams, Ann Chase, Julian Sue Jordan, Thurlow and Phi Mu s Emond, Sara Jean Marshall cilla Sawyer a Freshman Virginia Barn lyn Hanson, B Scanlin.

**Applica  
Set By**

The office nounced the assistance for 61. Scholars from Decemb uary 26, 1960

Students m and NDEA 1960 through May 1, 1960 students may

The applica lege year ma the listed per extreme emer

Forty-four for the four-y the University



enlighter Y.M.C.A. helps holiday pro

Clean, comfo accommodatio \$3.20-\$3.60 everything, Id and program and groups o

Write Reside

**WM. SLOA**

356 West 34th

(One bloc



### 70 Freshman Women Pledged To Sororities

The seven University of Maine sororities pledged 70 freshman women last week, ending the two-week rushing period.

Alpha Chi Omega pledged Sharon Estabrooke, Sandra Hunter, Claire Keenan, Linda Kierstead, Pat Packard, Paula Parker, Diane Ricker, Dorothy Shea and Ila Young.

Alpha Omicron Pi pledges are Louise Clark, Linda Ellis, Betty Furtwengler, Penny Hendershot, Gail Hoxie, Jo Hunt, Julie Ingalls, Gail Ladd, Joanne Shaw, Natalie Sweetster, Darlene Worthen and Linda Wright.

Chi Omega pledged Nancy Buckminister, Anne Doane, Pat Egan, Elaine Farashian, Jean Gerry, Maureen Henry, Peggy Higgins, Marie McDonnell, Darlene Ostic, Joyce Phillips, Marcia Roak, Judy Shaw, Pat Small, Judy Sudds and Carolyn Vickery.

There are thirteen new Tri-Delt pledges: Molly Jean Canders, Debbie Chapman, Sally Grindell, Niki Kimball, Evelyn Krauter, Pauline Lincoln, Judith London, Ruth McBreairty, Sue McGuire, Marie Patterson, Joanne Pratt, Jean Rogers and PennyLou Smith.

New Delta Zeta pledges are Cynthia Adams, Ann Buchanan, Mary Sue Chase, Julianna Free, Mary Gavin, Sue Jordan, Barbara King, Ardra Thurlow and Ann Ziegler.

Phi Mu sorority pledged Bertha Emond, Sarah Hanson, Carol Ivey, Joan Marshall, Elaine Murphy, Priscilla Sawyer and Martha Snyder.

Freshman Pi Beta Phi pledges are Virginia Barnes, Marcia Fuller, Marilyn Hanson, Barbara Jordan and Joyce Scanlin.

### Application Period Set By Aid Office

The office of student aid has announced the application period for assistance for the college year 1960-61. Scholarships may be applied for from December 7, 1959 through January 26, 1960.

Students may apply for University and NDEA loans from January 18, 1960 through May 1, 1960. From May 1, 1960 through August 1, 1960 students may apply for employment.

The applications for the next college year may be filed only during the listed periods, except in case of extreme emergency.

Forty-four students are registered for the four-year nursing program at the University of Maine.



Really Enjoy Your Holiday in New York

Make it gay, festive and enlightening. The Sloane House YMCA helps you do it with special holiday programs.

Clean, comfortable and inexpensive accommodations—\$2.20-\$2.30 single, \$3.20-\$3.60 double. Convenient to everything. Ideal year-round residence and program center for young men and groups of all sizes.

Write Residence Director for Folder

WM. SLOANE HOUSE YMCA 356 West 34th St., New York, OX 5-5133 (One block from Penn Station)



### University Administrators Moved Into New Offices

By Mary Irving

Several members of the University Administration are comfortably settled in their new offices in Alumni and Wingate Halls. Estimated cost of the renovation and moving is \$23,000, according to Henry L. Doten, University Business Manager.

The section of Alumni Hall formerly occupied by the Registrar's Office has been remodeled into four separate offices. These are occupied presently by Charles Crossland, Vice President for Administration; Prescott Vose, Controller; Harry Gordon, Treasurer; and Donald Taverner, Director of Development.

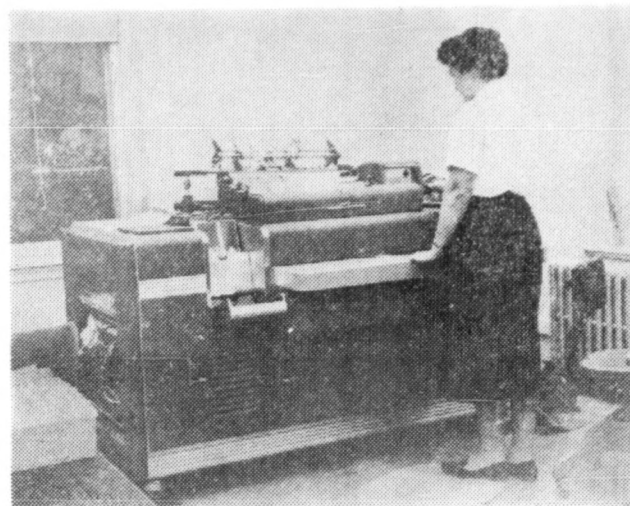
Besides offices, a conference room has been built in Alumni Hall.

The Registrar's office is now located on the first floor of Wingate Hall in the area formerly used by the Physics Department. The office of James A. Harmon, Director of Admissions, is also on the first floor.

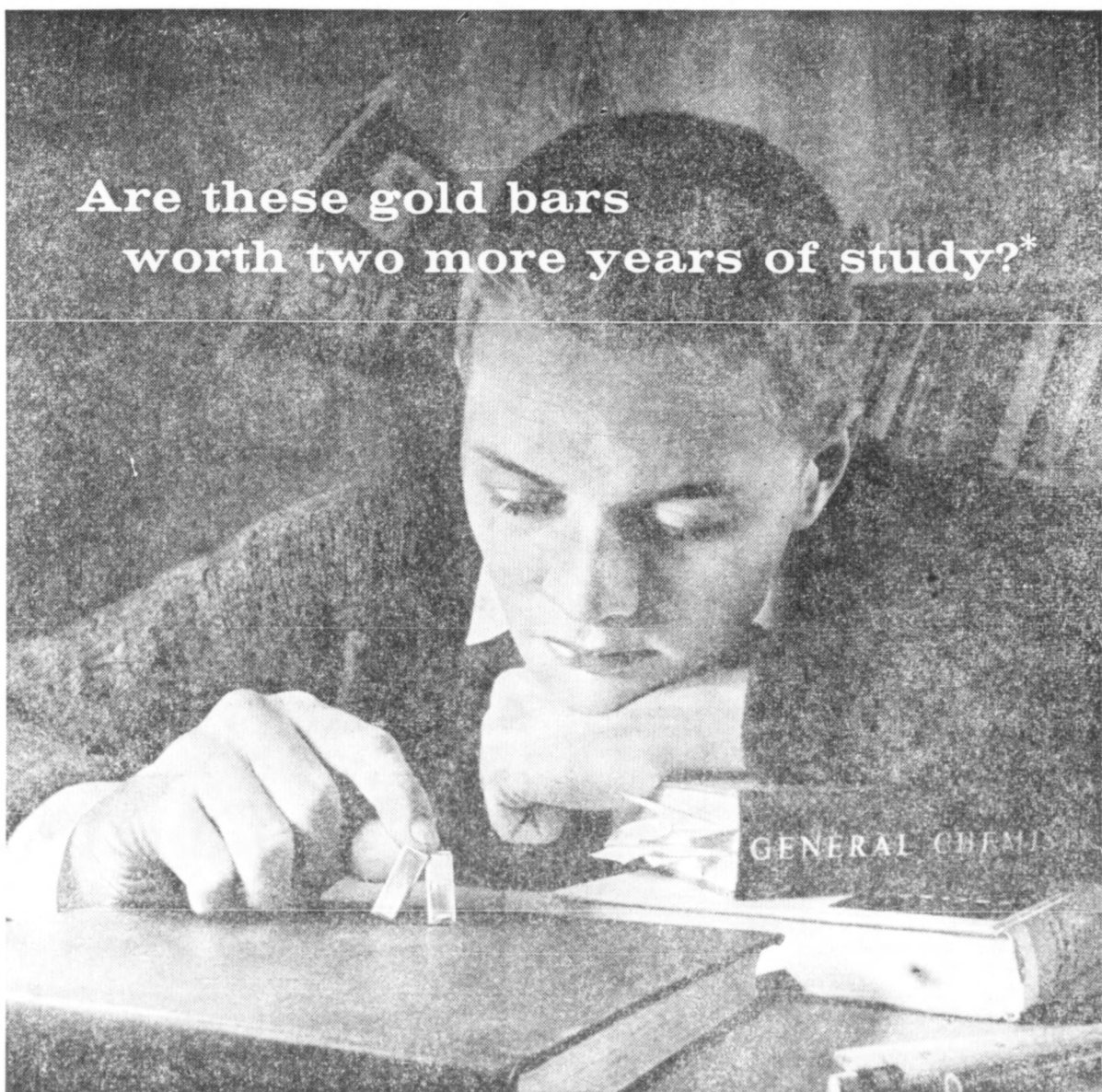
The second floor now houses the School of Nursing as well as the office of Astronomy Professor Maynard F. Jordan.

Another feature of Wingate Hall is the new I.B.M. Machine room. The I.B.M. equipment used by the Registrar's office was formerly kept in a small room without any windows. Some of the equipment had to be kept in a storage corridor. "The new machine room is much nicer," says Miss Evelyn Taylor, Assistant Registrar. "We were so crowded in the other building. We very much appreciate the pleasanter working conditions."

### Worksaver In Wingate Hall



Pictured above is the IBM machine in its new surroundings in Wingate Hall.



Are these gold bars worth two more years of study?\*

As a college sophomore, you're nearing the mid-point. Halfway through college—halfway through Army ROTC. Now you face a major decision: Are the gold bars of a Second Lieutenant worth two additional years of study in advanced ROTC?

That question is yours to answer now—before you register for your junior year. As you explore the facts, carefully weigh the traditional responsibilities and rewards of serving as an Army officer . . .

1. Traditional responsibilities. To meet the command responsibilities of an Army officer, you apply the leadership principles absorbed during advanced ROTC training. And your executive potential grows as you gather leadership experi-

ence. That's why employers often prefer men who served as commissioned officers. These men already have proven their capacity to shoulder executive responsibility.

2. Traditional rewards. In every organization, greater responsibilities mean greater rewards. Thus the traditional responsibilities and prestige of an Army officer are matched by material advantages. For example, if you plan to marry soon after graduation—an officer's salary can be a distinct advantage. A married 2nd Lieutenant earns a minimum of \$356.68 per month—plus substantial fringe benefits.

Need more information? Check with the Professor of Military Science and Tactics at your college or university. He'll be glad to discuss your decision with you.

\*Last year, 14,436 sophomores answered "yes" to this question—and entered advanced Army ROTC.



## Famous Tenor Presents Concert

Brian Sullivan, one of the foremost tenors in the United States today, will sing at the University of Maine on January 6, Professor Lewis Niven, chairman of the University concert series committee, announced today.

Born in California, Sullivan began serious study of voice during his last years in high school. During his early years, he spent much time in filling musical comedy engagements. One winter he toured with the "Ice Follies."

It was not until after he completed two years' infantry service in World

War II that his excellent performance began to gain fame for him with rare speed. Since that time as one Detroit News music critic stated, "his star has been ascending with the speed of a rocket."

His concert at the University, which will be the second in this year's series, will be given in Memorial Gymnasium at 8:15. Tickets may be purchased or reserved at the University Music Department. University students will be admitted by showing their ID cards.

## Students To Form New Folklore Club

Any students interested in folklore and folk music who would like to form a club should contact Steve Nourse at 129 Dunn Hall or at WORO, or Lee Morton at 401 Oak Hall. These students are trying to form a club with meetings to swap songs and stories and to have guest singers.

Veterans checks are due in on Wednesday, December 16.

## Lithographs By Ralph Fabri Are On Display In Library

An exhibition of casein paintings, etchings, and lithographs by Ralph Fabri, an internationally known artist, is being held in the Louis Oakes Room of the Library until December 15.

The exhibition has been arranged by members of the art department. There are 17 etchings, eight lithographs, and 15 casein paintings in the display.

Fabri studied architecture at the Royal Institute of Technology and other branches of art at the Royal Academy of Fine Arts in his native city of Budapest, Hungary. He came to the United States in 1921 and was naturalized in 1927. He is the author of several books on drawing and painting and a member of a number of societies dedicated to the advancement of art.

He has exhibited in nearly all national exhibitions and also in Italy, France, England, Scotland, Sweden, Norway, Finland, India, Egypt, Lebanon, and many other countries.

His art works are included in the permanent collections of many galleries and museums in this country and abroad.

## MCA Holds Annual Christmas Party, Banquet Tomorrow

M.C.A. will hold its Annual Christmas Party and Banquet on Friday evening, December 11, from 5:45 to 10:00 p.m. at the M.C.A. House. It was announced today by Sally Ness and Roger Upham, co-chairmen for the event. The cost for the entire evening is \$6.00. The evening will be packed with fun, prizes, and surprises, so bring your friends and spend the evening at M.C.A.

Identical Pre-Christmas Worship Services will be held this Sunday in the Little Theatre at 9:30 and 11:00 a.m. The Rev. William B. McGinnis will preach on the theme "What's In A Name?" and Sally Ness will be Worship Leader. The M.C.A. Choir, under the direction of Norwood Mansur, will sing "O Holy Night" with the solo part by Barbara Williams. Organist for the services is Peter Haynes.

The student body is urged to make church attendance this Sunday a part of their Christmas observance. Part of the Christmas offering this year will be given to the American Bible Society toward their work of distributing copies of the Scriptures throughout the world.

## Phi Eta Wives Elect

The Phi Eta Wives club has elected the following officers: Gayle McCrea, president; Nancy Huse, vice president; Donna Laskey, secretary-treasurer; and Priscilla Millier, social chairman. The wives are planning a Christmas party for underprivileged children. They also entertained the Phi Eta wives alumni at a homecoming banquet.

# engineers

and what they do at Pratt & Whitney Aircraft...

The field has never been broader  
The challenge has never been greater

Engineers at Pratt & Whitney Aircraft today are concerned with the development of all forms of flight propulsion systems—air breathing, rocket, nuclear and other advanced types for propulsion in space. Many of these systems are so entirely new in concept that their design and development, and allied research programs, require technical personnel not previously associated with the development of aircraft engines. Where the company was once primarily interested in graduates with degrees in mechanical and aeronautical engineering, it now also requires men with degrees in electrical, chemical, and nuclear engineering, and in physics, chemistry, and metallurgy.

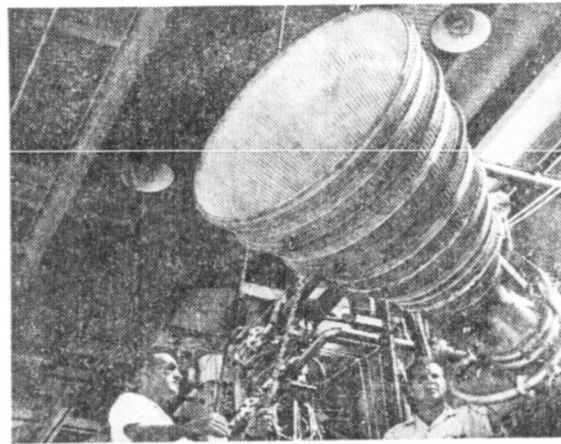
Included in a wide range of engineering activities open to technically trained graduates at all levels are these four basic fields:

**ANALYTICAL ENGINEERING** Men engaged in this activity are concerned with fundamental investigations in the fields of science or engineering related to the conception of new products. They carry out detailed analyses of advanced flight and space systems and interpret results in terms of practical design applications. They provide basic information which is essential in determining the types of systems that have development potential.

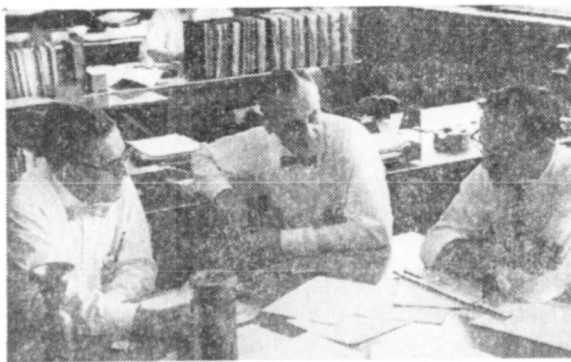
**DESIGN ENGINEERING** The prime requisite here is an active interest in the application of aerodynamics, thermodynamics, stress analysis, and principles of machine design to the creation of new flight propulsion systems. Men engaged in this activity at P&WA establish the specific performance and structural requirements of the new product and design it as a complete working mechanism.

**EXPERIMENTAL ENGINEERING** Here men supervise and coordinate fabrication, assembly and laboratory testing of experimental apparatus, system components, and development engines. They devise test rigs and laboratory setups, specify instrumentation and direct execution of the actual test programs. Responsibility in this phase of the development program also includes analysis of test data, reporting of results and recommendations for future effort.

**MATERIALS ENGINEERING** Men active in this field at P&WA investigate metals, alloys and other materials under various environmental conditions to determine their usefulness as applied to advanced flight propulsion systems. They devise material testing methods and design special test equipment. They are also responsible for the determination of new fabrication techniques and causes of failures or manufacturing difficulties.



Exhaustive testing of full-scale rocket engine thrust chambers is carried on at the Florida Research and Development Center.



Frequent informal discussions among analytical engineers assure continuous exchange of ideas on related research projects.



World's foremost designer and builder of aircraft engines

## PRATT & WHITNEY AIRCRAFT

Division of United Aircraft Corporation

CONNECTICUT OPERATIONS — East Hartford

FLORIDA RESEARCH AND DEVELOPMENT CENTER — Palm Beach County, Florida

For further information regarding an engineering career at Pratt & Whitney Aircraft, contact your college placement officer.

### FRANCONIA

OLYMPIC  
INSPIRED  
SKI WEAR  
FOR 1960

At your nearest sports shop or department store  
FRANCONIA SKI WEAR, INC.  
30 Essex Street,  
Boston, Mass.

Orono, Maine  
Memor  
And M  
The Memo  
alive with  
100 Ele  
Radio  
Will Di  
More tha  
radio engin  
discuss rev  
electric cod  
meeting to  
Room 141  
Building.  
The Am  
Electrical E  
stitute of  
their off-cam  
meeting join  
electrical co  
bers of Elec  
be welcome  
Discussing  
those atten  
prominent m  
are George  
for Underw  
Thomas Mo  
inspector for  
Carl J. Dan  
district man  
Manufacturin  
Wilbur Chad  
tor of the E  
Company. A  
Public Sate  
Mr. Hilton.  
Prof. Ken  
electrical e  
ment will l  
meeting.  
Team  
Tufts  
The Unive  
team partic  
University T  
4 and 5. An  
Daly debate  
won over B  
International  
ton, William  
Supporting  
Richard Lev  
gins. They  
Nazarene, W  
Rhode Islan  
School beat  
In all, thir  
pated in the  
December  
to Saint An  
Debate Tou  
and Leroy L  
affirmative.  
Kenneth M  
negative. T  
rounds of d

Write fo  
brochure

Prof. J. W. E  
Washington S  
College  
New York Univ  
New York 3,

# Memorial Union Will Feature Santa And Mrs. Maine Christmas Dance

The Memorial Union will be alive with activity again this

## 100 Electrical And Radio Engineers Will Discuss Code

More than 100 electrical and radio engineers are expected to discuss revisions in the national electric code at a University meeting tonight at 7 p.m. in Room 141 in the new Physics Building.

The American Institute of Electrical Engineers and the Institute of Radio Engineers and their off-campus members will be meeting jointly. In addition, all electrical contractors and members of Electrical Associates will be welcome to attend.

Discussing the revisions with those attending will be four prominent men in the field. They are George Hilton, field engineer for Underwriters' Laboratories; Thomas McLaughlin, electrical inspector for the City of Bangor; Carl J. Dane, Winchester, Mass., district manager of the Bussman Manufacturing Company; and Wilbur Chadeayne, lighting director of the Bangor-Hydro Electric Company. A film, "Album of Public Safety," will be shown by Mr. Hilton.

Prof. Kenneth Parsons, of the electrical engineering, department will be in charge of the meeting.

## Team Debates At Tufts Tournament

The University of Maine debate team participated in the Tufts University Tournament, December 4 and 5. Andy Harvey and Dawn Daly debated the affirmative and won over Brandeis and American International. They lost to Princeton, Williams, and Boston College.

Supporting the negative were Richard Levasseur and Joyce Higgins. They won over Eastern Nazarene, Wesleyan, and Suffolk. Rhode Island and Marymount School beat them.

In all, thirty-two colleges participated in the tournament.

December 12, the team is going to Saint Anselms College Novice Debate Tournament. Bill Davis and Leroy Lambert will debate the affirmative. Thomas Harvey and Kenneth Morgan will debate negative. There will be three rounds of decision debate.

week-end, this time in keeping with the Christmas spirit. Saturday afternoon from 1 to 4 p.m. Santa Claus will make the Lobby of the Union his headquarters, eliminating the inconvenience of taking students and faculty children to crowded department stores.

That evening, the Couples Committee of the Union, in cooperation with the Mrs. Maine Club will hold its annual Christmas Dance from 9 to midnight in the Main Lounge. Couples will dance to the music of Sammy Saliba's Orchestra. The public is invited.

Sunday afternoon at 1:30 a special film, "Anatohan," will be shown in the Bangor Room. The movie is based on the fantastic actual account of the twenty sailors and single girl who held out for seven years on the island of Anatohan refusing to believe in Japan's defeat. Akemi Negishi stars. Because of Christmas Vespers, the film

is being shown earlier than the usual 4 p.m.

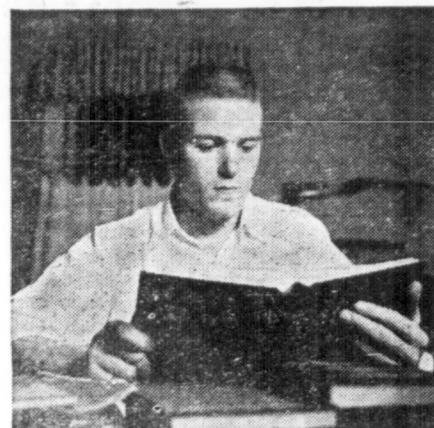
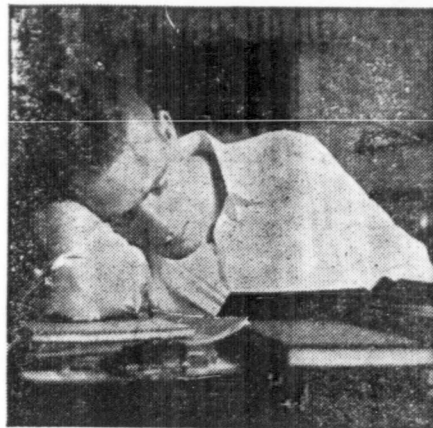
The Tuesday afternoon Poetry

Hour will feature Richard C. Cook, II, reading Charles Dickens'

"Christmas At Manor Farm" from

the Pickwick Papers.

Don't forget the Weekly Bridge Tournament tonight at 7 p.m.



### Does studying for exams make you want to zzz-zz-zz?

### Let safe NoDoz alert you through study and exams!

If hitting the books ever makes you drowsy, NoDoz is the fast waker-upper you need. NoDoz Stay Awake Tablets deliver an accurate amount of safe stimulation to keep your mind and body alert during study and exams. How? With caffeine—the same pleasant stimulant in coffee. But non-habit-forming NoDoz is faster, handier, more reliable. Buy some—and be in good company. Millions of times a year safe NoDoz helps busy people keep alert and awake.

P.S. When you need NoDoz, it'll probably be late. Play safe. Keep a supply handy.

NoDoz, the safe stay awake tablet — available everywhere



## Annual Party, Tomorrow

Annual Christmas party on Friday from 5:45 to 8:00 p.m. House it by Sally Ness. Co-chairmen for the entire evening will be...

Christmas Worship this Sunday in 10:30 and 11:00 a.m. B. McGinnis will be in charge of the meeting.

argued to make a Sunday a part servance. Part of this year American Bible work of distributions through-

## lect

club has elected Gayle McCrea, vice president; secretary-treasurer; social chairman. ing a Christmas legged children. d the Phi Eta mecoming ban-

## FRANCONIA

OLYMPIC INSPIRED SKI WEAR FOR 1960



At your nearest sports shop or department store FRANCONIA SKI WEAR, INC. 30 Essex Street, Boston, Mass.

**Junior Year in New York**

An unusual one-year college program

Write for brochure to:

Prof. J. W. Egerer  
Washington Square  
College  
New York University  
New York 3, N. Y.

12" LP VINYL RCA Custom Record

**VICEROY Cigarettes Campus Jazz Festival**

A LISTENING MAN'S RECORD (A Listening Woman's Record, too)—brought to you exclusively by VICEROY—the Cigarette with A THINKING MAN'S FILTER... A SMOKING MAN'S TASTE!

**LOOK!**

**10 GREAT JAZZ NUMBERS**

Martians' Lullaby	March Of The Toys
Royal Garden Blues	Just A Mood
Shine On Harvest Moon	
Erroll's Bounce	St. James Infirmary
Ciribiribin	Tin Roof Blues
When The Saints Go Marching In	

**PLAYED BY YOUR FAVORITE ARTISTS**

Benny Goodman	Louis Armstrong
Erroll Garner	Shorty Rogers
Jonah Jones	Duke Ellington
Ben Webster	Red Norvo
Bob Scobey	Buck Clayton
Vic Dickenson	
Rex Stewart	
Dukes of Dixieland	

**Yours for Only \$1.00 and 2 empty packages of VICEROY Cigarettes**

**CLIP THIS ORDER BLANK NOW!**

BROWN & WILLIAMSON TOBACCO CORPORATION  
Box 355  
Louisville 1, Kentucky

Please send me postpaid \_\_\_\_\_ record(s) of the Special VICEROY CAMPUS JAZZ FESTIVAL. Enclosed is \$1.00 (no stamps, please) and 2 empty Viceroys packages for each record ordered.

Name \_\_\_\_\_  
Address \_\_\_\_\_  
City \_\_\_\_\_ Zone \_\_\_\_\_  
State \_\_\_\_\_

This offer good only in U.S.A. Not valid in states where prohibited, taxed or otherwise restricted—expires Dec. 31, 1959.

Just Released for

# VICEROY CIGARETTES!

The Greatest Jazz Album in Years!

## Campus Jazz Festival

ON A SPECIALLY PRESSED RCA CUSTOM RECORD

Featuring Top Favorite Jazz Instrumentalists —winners in a national popularity survey of American College and University Students! Yours at a special low price—with the compliments of VICEROY—the cigarette that gives you the best filtering of all for full rich taste. "A Thinking Man's Filter . . . A Smoking Man's Taste."



Editorials

Letters Must Be Signed - - Always

Once again it becomes necessary to remind our readers that we cannot publish Letters to the Editor unless they are signed. Several times a year we receive letters that we would like to print but cannot, because the author has not "remembered" to sign them.

We will, on occasion, withhold a name if asked to do so, but we would like to discourage this practice as much as possible. After all if someone has enough conviction to write a letter, he should want to have his name appear with it.

We do not always print letters as soon as they arrive. Their publication depends upon space on the page and pertinency of the letter. Those that relate to a column or editorial are given first priority. We will not print letters containing libelous statements for our own protection as well as yours.

As long as we are clearing up a few points let's make one more thing clear. All editorials, unless otherwise labeled, are written by the Editorial Page Editor, not the Editor-in-Chief. So in the future if you intend to throw some stones, make sure you are aiming them at the right person.

Salutations To All

The staff of the Maine Campus takes this opportunity to wish all of our readers a very Merry Christmas and Happy New Year. Be careful on the highways, you don't want to have to use your Christmas money to pay a traffic fine. See you next year.

Delta Tau Delta History

The fraternity system, which today provides an experience of mutual service and friendship in college life, was born in the year 1776 at the College of William and Mary in Virginia. This first secret Greek-letter society, called Phi Beta Kappa, was later changed from a secret social fraternity to the scholastic honor society that it is today. The oldest social fraternity in existence today was founded as Kappa Alpha Society in 1825 at Union College, Schenectady, New York. Among the pioneers in fraternity organization was Delta Tau Delta.

In 1859 eight students at Bethany College, Virginia, organized and founded the first chapter of Delta Tau Delta Fraternity. In its second year the new organization remained strong and growing, but a disastrous fire in 1860 demolished most of Bethany and destroyed all the fraternity records. It was at this time, too, that the full impact of the Civil War was beginning to hit the Virginia schools, and the fraternity ranks were thinned. When the war's demands finally forced the chapter to temporarily suspend operations, Rhodes S. Sutton and Samuel S. Brown, two initiates from Washington and Jefferson College in Cannonsburg, Pennsylvania, were responsible for forming a new chapter at that college. These two men were thus able to continue the existence of Delta Tau Delta.

By the 1880's fraternities began to settle down and attempt to gain a more secure and stable organization. The next major obstacle to conquer was that of gaining respect from educators and college administrators. Intemperance, excesses, factionalism, opposition to constituted authority, and lack of scholarship had created a black mark in the fraternal system's reputation. Legislation outlawing fraternity existence in certain colleges caused the formation of secret chapters which were as enthusiastic as ever.

An enthusiastic member in the National Interfraternity Conference (established to discuss and work out the problems of mutual interest), composed of sixty national college social fraternities, Delta Tau Delta was among the first to take steps toward bettering fraternity morals and standards. Part of this procedure was the establishment of a national headquarters, now located at Indianapolis, Indiana. An arch chapter was also set up in 1922 in order to maintain closer contact between the national organization and the active chapters. The appointment of a field secretary to make visits to the chapters and a scholarship chairman to supervise a detailed scholarship program were further improvements in organization. These steps, together with the whole-hearted interest of Delta Alumni in both Delta Tau Delta as a fraternity and the fraternity system as a whole, have brought Delta Tau Delta a long way from those first years at Bethany College.

Today there are eighty-nine chapters in thirty-nine states, the District of Columbia, and Ontario, Canada. Approximately sixty thousand members have been initiated into Delta Tau Delta; six thousand are active members in colleges and universities.

Gamma Nu Chapter of Delta Tau Delta was established at the University of Maine in 1908 when the local fraternity, Gamma Omicron (established at Maine in 1897), was petitioned by the National organization.

That year, Gamma Nu became the fiftieth chapter of Delta Tau Delta.

In 1940 the original house was destroyed by fire, and the present structure was built the following year. Shortly after the new house was completed, the fraternal organization was temporarily suspended because the war left very few members at Orono. The house was made available for military housing until the last part of the war when the fraternity again was able to form an appreciable membership.

Following the nationally ad-

Letters to the Editor

To the Editor:

It is houseparty time again, and social chairmen have that panicky, "Where-will-I-get-a-chaperon" look! The cry goes up, in house meetings, in the Den, "Nobody wants to chaperon." And so, year after year, the weary but good natured alums step in to save the "social affair."

The chaperon problem — one that has stimulated much discussion in the Committee on Student-Faculty Relations — is not limited to fraternities alone. The situation has become drastic over the last few years. In trying to get our faculty to chaperon social affairs we find that past experiences have discouraged a large number and that their comments to the younger faculty certainly have not encouraged this new source. We feel that it comes within the scope of this committee to make a few suggestions that might promote better understanding from both students and faculty.

Strictly Speaking

'59 In Review

By JACK LINNELL

It's time again to take one long last look at 1959 before it is gone for good. So here are some of the more colorful and important happenings during the last 365.

Well, if 1959 is remembered for nothing else it will be the year that Rockefeller proved you could have money and still be popular and Charles Van Doren proved you couldn't.

The year also saw Khrushchev and Eisenhower making extensive use of their Credit Cards and Travelers Checks. Not to mention Nixon, Stevenson, Humphrey, and most of the members of the House and Senate. It was a great year for travel.

For the second year in a row the American public has been treated to the demise of a rock and roll personality. Last year it was Pfc. Pressley that left and now, Ncaa. (no class at all) Allen Freed has been advised that his services are no longer required. Huzzaaaah!

This has been a year of soul-cleansing. Boxing is crooked, quiz shows are crooked, D.J.'s are crooked, some western personality can't ride a horse, so he is a fake etc. etc. From now on everything will be on the level. Real bullets, real blood, real fights etc. Actually the whole thing has been real sickening.

Secretary Flemming personally put the cranberry out of circulation for the '59 holidays. Both Flemming and Secretary of Agriculture Benson did have cranberries for Thanksgiving, but they are about the only ones who did.

Castro has been improving his marksmanship this year. He has not taken long to show his true colors . . . red.

These are but a few of the more illustrious happenings of the year. Only time and my conscience prevent me from naming more.

vocated practice of the house-mother system. Gamma Nu Chapter has had a housemother for many years. The first Lady of the House, Mom Barron, has been with us for seven years. Seniority rights, however, must go to Roy Thibreau, our cook, who has been here thirteen years.

(This is the first in a series on fraternities at Maine.)

The most obvious block is the question of responsibility. The Handbook of Social Affairs states that the president and the social chairmen of an organization are responsible for the conduct of their group and for the enforcement of University regulations. It is taken for granted that these individuals can avoid any embarrassing situations, and it would appear that the responsibility is removed from the chaperons. However, a close look at the Faculty Handbook of Information reveals that, "As a chaperon, the faculty member is expected to require that all rules and regulations of the University be observed, and that infractions of regulations be reported to the Secretary of the Social Affairs Committee."

Considering the uncomfortable position in which this places the chaperon, we feel that this discourages the greatest number of faculty members. Here it is the responsibility of the president or social chairmen to spot and to eliminate any infraction before the chaperon is forced to act.

It is the dual role that they have to play, that of chaperon and policeman, that presents the basic problem to faculty members. These two positions are not compatible, and not until the job of policeman is assumed by the organization will the role of chaperon be a pleasant one.

Another problem that comes to light is the treatment that chaperons receive. Faculty members are human beings and would appreciate being treated as such, not as exiles locked away in the housemother's room. We are

not saying that they love to dance all night, are extreme extroverts or necessarily want to meet every guest at a party, but there is a happy medium. Perhaps the chaperoning couple has friends that they would like to bring along; some enjoy playing cards. It might even be arranged for some students to plan "the detail" for keeping the chaperons company — but certainly not so that it is obvious. Nothing could be worse.

The final problem to be mentioned here is that of arrangements. Many faculty members have children to be taken care of. Babysitters are scarce and expensive. Social organizations should provide sitters (unless the family has a "regular") and pay for them; however, no invitation should read, ". . . and we'll pay for the babysitter." Perhaps the sitter could be delivered when the chaperons are called for, and the operation reversed at the end of the evening. Thus, finances need never be mentioned. Also — no parking problem for the chaperons!

Perhaps it is not too late to win back the prospective chaperons on this campus. Much damage has been done, but we feel that improvements may be made along all these lines. It may be a long, slow process, but with the final weekend of houseparties upon us, and in preparing for spring, let us all try to redeem ourselves and promote better Chaperon-Student Relations.

Committee on Student-Faculty Relations  
Asst. Prof. Llewellyn E. Clark, chairman  
Robert Sterritt, student chairman

LITTLE MAN ON CAMPUS



The Maine Campus

Published Thursdays during the college year by students of the University of Maine. Subscription rate—\$1.00 per semester. \*Local advertising rate—\$1.00 per column inch. Editorial and business offices, 4 Fernald Hall, Telephone Extension 242. Member Associated Collegiate Press. Represented for national advertising by National Advertising Service Inc., College Publisher's Representative, 420 Madison Ave., New York 17, N. Y. Entered as Second Class Matter at the Post Office, Orono, Me.

- EDITOR-IN-CHIEF Phyllis Warren
BUSINESS MANAGER Peter Gammons
CITY EDITOR Glenn Phillipon
FEATURE EDITOR Jo Dion
SPORTS EDITOR Rick Brennan
MAKEUP EDITOR Martha Brackett
EDITORIAL PAGE EDITOR Jack Linnell
SOCIETY EDITOR Diane Wiseman
PHOTOGRAPHY EDITOR William Crawshaw
COPY EDITOR Carol Pollard

Union Com Sponsors Christmas

Tuesday, Decen Special Events Co Memorial Union s Annual Union Christ students, faculty children at 7 p.m.

The program, pattern of former vide cartoons for the Bangor Room being entertained Lounge.

The program wi rol singing, with the organ, music bers, and a studen tic group under James Barushok sent The Pled P After the entertain visit and refresh served. Informa round out the eve

Nancy Morse is the committee party.



CO

Interes ogy and tigate W your care computer basically gear uses

At its at most Western puters in and supp In its ot cations a puters an You'll with We Here con and you engineer

Principal m Burlington, Columbus, Distribution



# Union Committee Sponsors Annual Christmas Party

Tuesday, December 15, the Special Events Committee of the Memorial Union sponsor the Annual Union Christmas Party for students, faculty, staff and their children at 7 p.m.

The program, following the pattern of former years, will provide cartoons for the children in the Bangor Room while adults are being entertained in the Main Lounge.

The program will consist of carol singing, with Phil Haskell at the organ, music and dance numbers, and a student-faculty dramatic group under the direction of James Barushok which will present *The Pled Piper of Hamelin*. After the entertainment, Santa will visit and refreshments will be served. Informal dancing will round out the evening.

Nancy Morse is chairman of the committee planning the party.

# Society Many Fraternity House Parties Fill Weekend With Laughter And Dancing

Diane Wiseman

Fraternity row was lit up this past weekend for fall house party season. Gay lights, a dreamy waltz, a fast downbeat, laughter—all the things that make for a really great time.

Alpha Gamma Rho held its Fall House Party Friday night with Randy Henderson's Orchestra and a Splash Party Saturday at the Bangor YMCA. Delta Tau, Sig Ep, and Phi Gam were also the scenes of house parties Friday evening. Sigma Chi had a dance Friday night with Dick Jones' band and Saturday night the Sigs and their dates went to Lucky's Landing for a roller skating party.

Dale Whitney's Maine Bears furnished the dance music at Phi Mu Delta Friday night while a little farther down the row could be heard the melodic strains of Paul Dinsmore at Phi Kap's Arabian Nights party. The Phi Kaps went to Camden Satur-

day for an outing. Phi Eta held its house party Friday evening with Bill Stetson's Orchestra and a jam session Saturday afternoon with Dale Whitney. It was Cafe Rouge at SAE Friday night, complete with Parisian costumes. Music was supplied by the Downeasters.

This coming week, Wednesday through Saturday, December 9 through 12, the Maine Masque is presenting the musical comedy, "Pajama Game". Curtain time is 8:15 p.m.

**Pinned:** Peggy Baker, Mercy Hospital, Portland to Barry Smith, Sigma Alpha Epsilon; Marlon Pusple, Aroostook State Teachers College to Don Desroches, Phi Eta Kappa; Martha Snider to Armand

# Alpha Zeta Initiates Two Members

Alpha Zeta, agricultural fraternity, initiated two new members

Romano, Sigma Alpha Epsilon; Pat Williams to John Chesebro, Sigma Phi Epsilon; Rosemary Lear to Jere Crouse, Sigma Phi Epsilon.

last night. They are Eugene Marong, a junior in Poultry Science from Lisbon Falls, and Peter Sanborn, a senior in Agricultural Economics from Ashland, Mass. These students were selected on the basis of character, personality, potential leadership and scholastic standard.



# DECK THE HALLS

When you think of Christmas gifts you naturally think of Marlboro cigarettes, leading seller in flip-top box in all fifty states—and if we annex Wales, in all fifty-one—and if we annex Lapland, in all fifty-two. (This talk about annexing Wales and Lapland is, incidentally, not just idle speculation. Great Britain wants to trade Wales to the United States for a desert. Great Britain needs a desert desperately on account of the tourist trade. Tourists are always coming up to the Prime Minister or the Lord Privy Seal, or the Thane of Glamis, or like that and saying, "I'm not knocking your country, mind you. It's very quaint and picturesque, etc., what with Buckingham Palace and Bovril and Scotland Yard, etc., but where's your desert?")

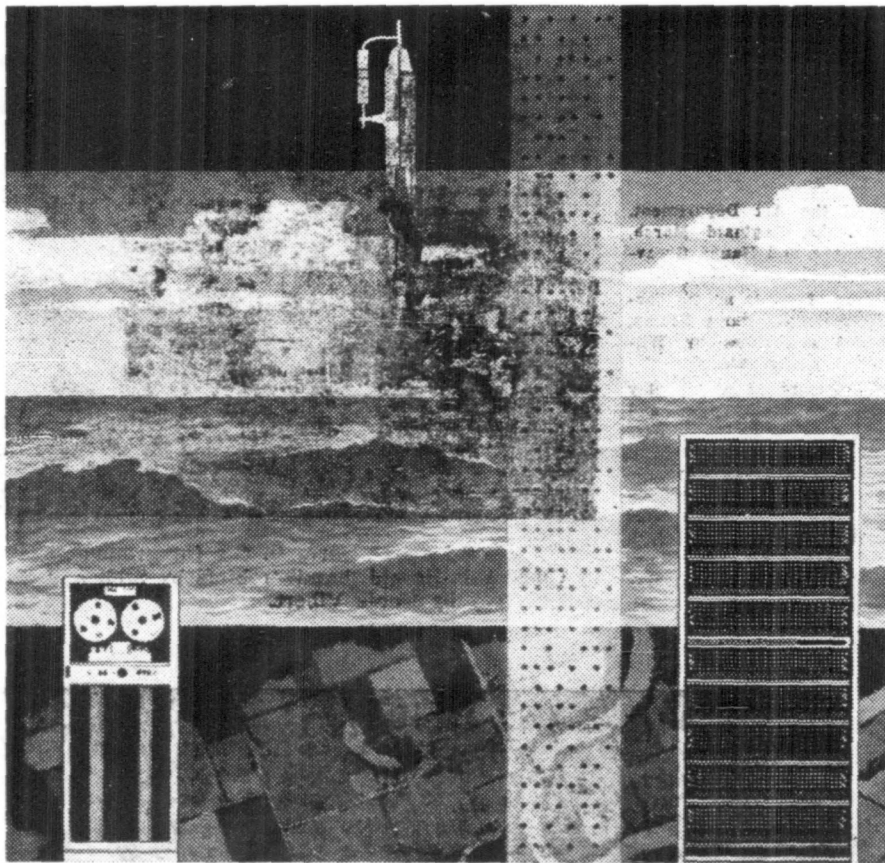


Before I forget, let me point out that Scotland Yard, Britain's plain-clothes police branch, was named after Wally Scotland and Fred Yard who invented plain clothes. The American plain-clothes force is called the F.B.I. after Frank B. Incheff, who invented fingerprints. Before Mr. Incheff's invention, everybody's fingers were absolutely glassy smooth. This, as you may imagine, played hob with the identification of newborn babies in hospitals. From 1791 until 1904 no American parent ever brought home the right baby from the hospital. This later became known as the Black Tom Explosion.

(But I digress. England, I was saying, wants to trade Wales for a desert. Sweden wants to trade Lapland for Frank B. Incheff. The reason is that Swedes to this day still don't have fingerprints. As a result, identification of babies in Swedish hospitals is so haphazard that Swedes flatly refuse to bring their babies home. There are, at present, nearly a half-billion unclaimed babies in Swedish hospitals—some of them well over eighty years old.)

But I digress. Marlboro is, of course, an ideal Christmas gift for your friends and loved ones who enjoy filter cigarettes. If, on the other hand, your friends and loved ones like mildness but don't like filters, then you can't go wrong with a carton of Philip Morris. If your friends and loved ones like a subtly mentholated cigarette that combines refreshing taste with high filtration, then buy a carton of Alpines. (Alpines, incidentally, are named after the late Albert G. Pine. Al Pine worked all his life to invent a cigarette that would combine light menthol and high filtration, but alas he never succeeded. As by-products of his research he did manage to invent the atom, the gooseneck lamp and the cocker spaniel, but the lightly mentholated high filtration cigarette, alas, never. Now this dream is realized, and what could be more fitting than to pay tribute to this gallant man by calling this cigarette Alpine?)

© 1959 Max Shulman



# COMPUTERS, CAREERS and YOU... after you join Western Electric

Interested in computers, computer technology and applications? Then you should investigate Western Electric as a place to build your career. Telephony today is built around computers. The telephone cross-bar switch is basically a computer. Electronic switching gear uses computer principles.

At its new engineering research center and at most of its 25 manufacturing locations, Western is relying more and more on computers in doing its main job as manufacturing and supply unit for the Bell Telephone System. In its other major field—Defense Communications and Missile systems—the use of computers and computer technology is widespread.

You'll discover quickly that opportunities with Western Electric are promising indeed. Here company growth stands on a solid base, and your own growth, too. We estimate that engineers will find 8,000 supervisory jobs open

to them in the next ten years. There will be corresponding opportunities for career building within research and engineering. Progress is as rapid as your own individual skills permit. And Western Electric maintains both full-time all-expenses-paid graduate engineering training and tuition refund plans to help you move ahead in your chosen field.

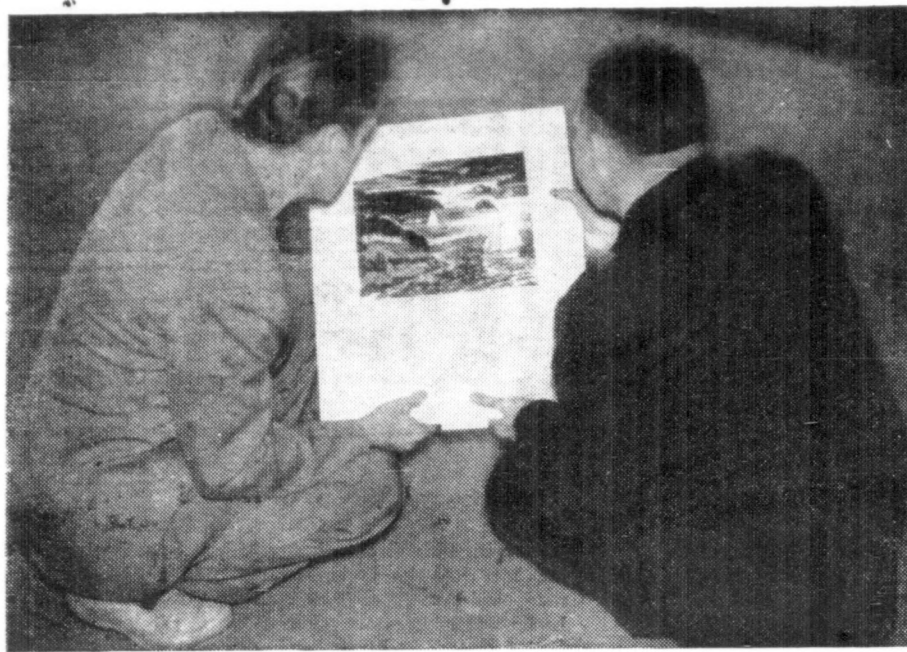
Opportunities exist for electrical, mechanical, industrial, civil and chemical engineers, as well as in the physical sciences. For more information get your copy of *Consider a Career at Western Electric* from your Placement Officer. Or write College Relations, Room 200E, Western Electric Company, 195 Broadway, New York 7, N. Y. Be sure to arrange for a Western Electric interview when the Bell System team visits your campus.



Principal manufacturing locations at Chicago, Ill.; Kearny, N. J.; Baltimore, Md.; Indianapolis, Ind.; Allentown and Laureldale, Pa.; Burlington, Greensboro and Winston-Salem, N. C.; Buffalo, N. Y.; North Andover, Mass.; Lincoln and Omaha, Neb.; Kansas City, Mo.; Columbus, Ohio; Oklahoma City, Okla.; Teletype Corporation, Chicago 14, Ill. and Little Rock, Ark. Also Western Electric Distribution Centers in 32 cities and installation headquarters in 16 cities. General headquarters: 195 Broadway, New York 7, N. Y.

...y love to  
...re extreme  
...arly want  
...a party,  
...y medium.  
...ing couple  
...would like  
...enjoy play-  
...ven be pre-  
...students to  
...keeping the  
...but cer-  
...is obvious.  
...se.  
...to be men-  
...of arrange-  
...y members  
...taken care  
...scarce and  
...rganizations  
...ers (unless  
...gular") and  
...ver, no in-  
...and  
...babysitter."  
...ould be de-  
...chaperons  
...ne operation  
...of the eve-  
...need never  
...no park-  
...chaperons!  
...too late to  
...ective chap-  
...pus. Much  
...one, but we  
...nts may be  
...se lines. It  
...process, but  
...nd of house-  
...d in prepar-  
...s all try to  
...nd promote  
...dent Rela-  
...dent-Faculty  
...yn E. Clark,  
...udent chair-  
...PUS  
...GIRL...  
...OF  
...AM 7:35  
...pus  
...of the Univer-  
...cal advertising  
...at Fernald Hall.  
...Press: Repre-  
...ryce Inc., Col-  
...ork 17, N. Y.  
...Me.  
...hyllis Warren  
...ster Gammons  
...lenn Phillippon  
...Jo Dion  
...Rick Brennan  
...artha Brackett  
...Jack Linnell  
...Jane Wiseman  
...am Crawshaw  
...Carol Pollard





Professors Vincent A. Hartgen and Harry J. Greaver examine one of the works by Carroll Thayer Berry. This is titled "Cradle Cove, Islesboro".



This 17th century song sheet on parchment, author unknown, has attracted the attention of James Harithas, student art assistant.

# Shop In Carnegie, Avoid The Rush!

Feature Editor, Jo Dion

Photographer, Bill Crawshaw

"Do your Christmas shopping early, avoid the rush", they say. Well, what more convenient and less crowded place could you shop in than Carnegie Hall? Here you'll find quiet atmosphere, pleasant salesmen, and bargain prices!

The annual "Art for Christmas" show is now in full swing in the gallery. Original paintings, graphics, sculptures, pottery, textiles, and crafts are available priced for student buying. Everything in the exhibit is under \$25.

Greaver, of the Art Department, Frank Hamabe, Roginald Marsh, Denny Winters, and Hanna Greaver.

Sculptures of paper mache covered with metal by Harry Stump, and wooden sculptures by William Muirs are available.

Ceramic pottery of native clay by Denis and Ruth Vibert and sculptured jewelry by Clark Fitz-Gerald are also featured.

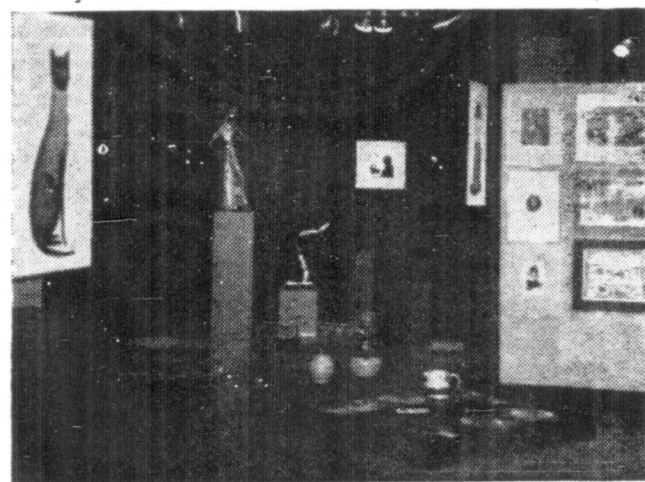
There are some very reasonable silk screen cards and handkerchiefs for those whose pocketbooks are practically deflated. Silk screen scarfs are also on sale.

The show will remain on display until Christmas vacation.

Paintings and graphics on display include works by Professors Vincent A. Hartgen and Harry J.



Scarfs for the lady, pure silk, designed by Stell and Shevis. Betsy Sweet and Carol Hall are seen trying them on.



Displayed on platform in the foreground is jewelry by Clark Fitz-Gerald, handkerchiefs by Stell and Shevis, and pottery by Denis Vibert.



Here are two cats with personality, done by Stell and Shevis. Jack Wyman and Dick Fayle seem interested in the pottery by Vibert.

SKATES SHARPENED  
25 CENTS  
WITH THIS COUPON

People Say—  
"You can find it at PARK'S"

**PARK'S** HARDWARE & VARIETY  
Mill Street Orono, Maine

**Hillson Achievement Award**  
Week of Dec. 7  
To  
**Skip Chappelle**  
**HILLSON CLEANERS**  
18 Mill St. Orono 6-3647

**New Furniture**  
at  
**DOWN TO EARTH PRICES**  
at the  
**Little Store with Big Values**  
**ECONOMY FURNITURE OUTLET**  
R. R. Station Old Town

## New Physics Lab Provides Many Facilities

One of the out-

the new Physics B... physics laboratory... Equipped with... designed for use v... materials, the labor... physics department... facilities for stud... workers interested... gations in the field.

In a course ca... ies," students stu... and molecular ph... ture, X-rays, qu... spectroscopy.

### Two Courses Give

A course calle... covers basic conc... radioactivity, nuc... ion detectors, p... nuclear fission, at... Tracer techniques... are also consider...

Another cours... Nuclear Physics" into the subjects... Physics." In add... is placed on t... three, and four... energy reactions... magnetism and m...

A grant of ap... from the Atomic... helped to make... nuclear physics l... versity.

### Radioisotope

Dr. Clarence... the physics depart... versity is licens... radioactive isots... trained on a lea... government.

Although the... oratory is one o... tures of the new... is only one of... facilities that ha... the new structure... for the first tim...

It is expected... significant addi... and research fac... will make... the availability... and to provide s... more than 100 s... in conjunction... and Science, rlb...

### Christmas T

Xi Sigma Pi... erty, will hold... ble, December... ng Hall. The s... ng school hours... Saturday. Each... if no one is pr... required to pay... fee at 105 Dec...



ment, author  
mes Harithas.



### New Physics Lab Provides Many Facilities

One of the outstanding features of the new Physics Building is a nuclear physics laboratory.

Equipped with intricate apparatus designed for use with radioactive materials, the laboratory provides the physics department with up-to-date facilities for students and research workers interested in pursuing investigations in the field of nuclear energy.

In a course called "Modern Physics," students study atomic, nuclear, and molecular physics, atomic structure, X-rays, quantum concepts, and spectroscopy.

#### Two Courses Given

A course called "Nuclear Physics" covers basic concepts of the subject, radioactivity, nuclear reactions, radiation detectors, particle accelerators, nuclear fission, and cosmic radiation. Tracer techniques and health physics are also considered.

Another course called "Advanced Nuclear Physics" delves more deeply into the subjects listed for "Nuclear Physics." In addition, special emphasis is placed on nuclear forces, two-, three-, and four-body problems, high energy reactions, nuclear spin and magnetism and multipole radiations.

A grant of approximately \$27,000 from the Atomic Energy Commission helped to make possible the modern nuclear physics laboratory at the University.

#### Radioisotopes Used

Dr. Clarence F. Bennett, head of the physics department, said the University is licensed to handle certain radioactive isotopes which are obtained on a loan basis from the U. S. Government.

Although the nuclear physics laboratory is one of the noteworthy features of the new Physics Building, it is only one of many much-needed facilities that have been provided by the new structure which is being used for the first time this fall.

It is expected that this building, a significant addition to the teaching and research facilities at the University, will make it possible to double the enrollment in freshman physics and to provide excellent facilities for more than 100 students now awaiting an engineering physics or the Arts and Science physics degree program.

### Christmas Trees Sold

Ni Sigma Pi, honorary forestry society, will hold a Christmas tree sale, December 5 to 15, behind Deering Hall. The sale will be held during school hours and until 3 p.m. on Saturday. Each tree is marked and if no one is present, purchasers are required to pay at the Forestry Office at 105 Deering Hall.

### Owls And Eagles Announce Birds Ball

The Owls and Eagles met Sunday evening to plan for the annual Bird's Ball to be held January 8th in the Gym. Co-chairmen for the dance are Alice McKiel and Bill Lashley. The main feature of the evening will be the basketball game, Eagles vs. Owls, which will be played during intermission.

### Theta Chi Sweethearts Club Elected Officers

The newly formed Theta Chi Sweetheart's Club recently held a meeting to elect officers. Those elected were: Mrs. Bette Esposito, president; Mrs. Judy Webber, vice president; Mrs. Cheryl Brownrigg, treasurer; Miss Ann Haley, secretary; and Mrs. Martha Brackett, social director. The club will sponsor a Christmas party for the fraternity on December 12.

A critical experiment, perhaps determining the fate of the world, takes place in the new Atomic Physics lab.

### BANGOR OPERA HOUSE "A GOOD SPOT TO RELAX"

SAT.-WED.

"CAREER"

with

DEAN MARTIN

SHIRLEY MACLAINE

ANTHONY FRANCIOSA

CAROLYN JONES

### BIJOU HOUSE OF HITS

NOW THRU SAT.

"GIRLS TOWN"

MAMIE VAN DOREN  
MIL TORNE  
RAY ANTHONY  
Plus Exciting Co-Hit

"TARZAN THE APE MAN"

Technicolor

D'ANNY MILLER as TARZAN

SUN.-MON.-TUE.

TWO BIG HITS

"THE DEVIL'S DISCIPLE"

BURT LANCASTER  
KIRK DOUGLAS

Plus Hit No. Two  
"THE RABBIT TRAP"  
ERNEST BORGNINE

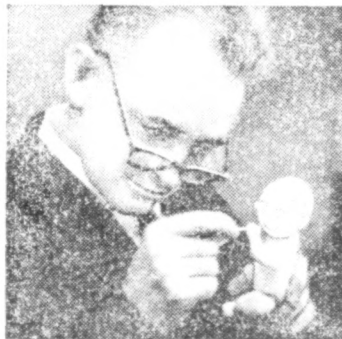
### LUCKY STRIKE presents

# Dear Dr. Frood:

## Historic event! DR. FROOD REVEALS HIS ADDRESS

(See below)

**Dear Dr. Frood:** My roommate continually steals my Luckies. What should I do?  
*Sinned Against*



**Dear Sinned Against:** The most successful defense is the traditional African one. Mold a small wax image of your roommate. Then, at full moon, insert half a dozen common household pins into the hands of the image.

**Dear Dr. Frood:** If I were demented enough to want to write to you, how would I go about it?  
*Pen Pal*

**Dear Pen Pal:** Address your letter to:  
Dr. Frood  
Box 2990  
Grand Central Station  
New York 17, N.Y.

No phone calls please. Thus far I've been unable to have a phone installed here in the box.



**Dear Dr. Frood:** Our football team has lost 8 games a year for the last 15 years. Can you give me a magic spell without doing the usual stuff?  
*Team Boss*

**Dear Alumni Pres:**  
Schedule fewer games.

**Dear Dr. Frood:** I am a 5'11" oled with a figure exactly like the Venus de Milo's. Would you say I should be in the movies?  
*Lovely*

**Dear Lovely:**  
I'll say anything you want me to.

**Dear Dr. Frood:** I told my fiancée we can't afford to get married until I finish college. She insists that two can live as cheaply as one. Is this true?  
*Dubious*

**Dear Dubious:**  
Yes. If they take turns eating.

### DR. FROOD ON HARASSING HABITS OF ROOMMATES



Roommates resent their common fault in roommates. Staring at the wall's picture. Not staring at the wall's picture. Staring when you're not staring a hungry worm. Its usual method of attack, and many a man, who is not a man, and many a woman, who is not a woman, and many a room-mate, who is not a room-mate.

## COLLEGE STUDENTS SMOKE MORE LUCKIES THAN ANY OTHER REGULAR!

When you want a tough, powerful and a good-tasting cigarette, try the famous Double Dipper's. It's the most popular cigarette in the U.S. - 1ST - LUCKY STRIKE TOBACCO CO.



## TODACCO AND TASTE TOO FINE TO FILTER!

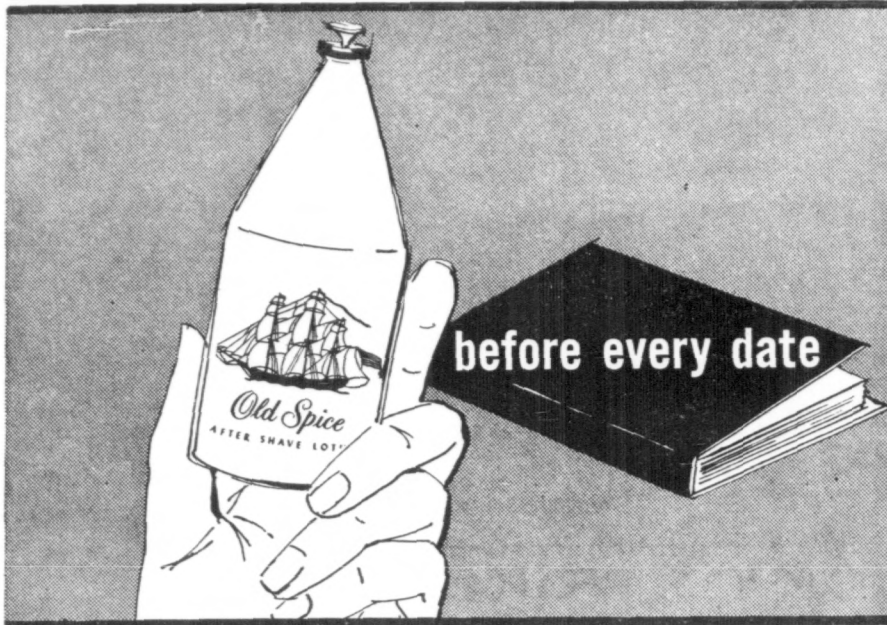
Product of The American Tobacco Company - Filtered for your pleasure.

and is jewelry  
ll and Shevis,

rs. Jack Wy-



For Shulton in Orono it's  
**The - M - Store**  
 On campus or in town our prices are the lowest  
 Main Street Orono



## after every shave

Splash on Old Spice After Shave Lotion. Feel your face wake up and live! So good for your skin... so good for your ego. Brisk as an ocean breeze, Old Spice makes you feel like a new man. Confident. Assured. Relaxed. You know you're at your best when you top off your shave with Old Spice! 100 plus tax

*Old Spice*  
 AFTER SHAVE LOTION  
 by SHULTON

## Sigma Nu Initiates Nine Including One Graduate

When one thinks of college fraternity initiations, one generally thinks of youth. So it was with Sunday's initiation ceremonies at Sigma Nu. Included among the "young men" who

were received into membership was Lester B. Howard of Bangor, a graduate of Maine, class of 1906.

After 53 years away from the formal classes and textbooks of his college years, Howard became a member of the national fraternity. Actually, he had been a member of the local group, known as Theta Epsilon. But he graduated before the organization became affiliated with Sigma Nu in 1913. Howard, a retired native of Dover-Foxcroft, was formerly general adjuster for the state of Maine for the General Adjustment Bureau.

Another aspect of the initiation was a father-son combination. Howard Stevens, a 1934 graduate of the University, and now a Portland resident, was on hand for the initiation of his son William V., class of 1961.

Along with Lester Howard and William Stevens, the following were initiated: Leroy Hunter, Edward Reidman, George Durgin, Douglas Allan, Lewis O'Brien, Robert Wood, and Joseph Dumont.

## Mrs. Maine Club Sponsors Party

The Mrs. Maine Club will present its annual children's Christmas party on December 11 from 3 to 5 p.m. The party will be held in the Women's Gym.

At the last meeting of the Club, there was a toy sale, and elections were held for the Nursery School Board, Program Committee, and Playground Committee.

The Maine varsity basketball team had a 15 and 7 record during the 1958-59 season, finishing second in the Yankee Conference and tying Colby for first place in State Series competition.

## Freshman Hoopsters Down Ricker In Unequal Contest

By Bob Stack

Last Thursday night, playing their first basketball game of the year, Coach Jim Butterfield's freshman team trounced Ricker Classical Institute by a score of 93-50.

Led by "Pud" Robertson, 27 points, Ted Leadbetter, 24 points, and Dave Pound, 14 points, the freshmen got off to an early lead and were never seriously challenged. Robertson, former Brewer High School star, used his height and excellent scoring ability to accumulate his point total.

Leadbetter, a product of Bangor High, showed plenty of drive and stamina as he scored from all over the court and also grabbed a good percentage of the rebounds. Dave Pound, who did not start the game, turned in an outstanding performance. The steady left hander from Stearns didn't miss many field goals and was always in there fighting.

Mike Burnham, Art Warren, Bob Davenport, and Laddie Deemer also looked good for the Frosh. Ricker's

all time scoring great Dalton Jordan was held to 9 points as the Frosh did an excellent job of plugging up the middle. Gary Bossie led the Ricker club with 18 points.

Coach Butterfield still will not commit himself to a definite starting lineup for the next ballgame. In an interview earlier this week, Coach Butterfield said: "I think that the freshman ballplayers have to run and operate the way that they are supposed to. If they make mental errors and cannot discipline themselves to the team effort then they'll have to take a back seat." He said that this is a necessity if a freshman player expects to eventually compete for starting varsity positions.

In their next outing the Frosh will play a rugged Washington State Teachers College team here in Orono.

Technology programs here include: mechanical engineering, electrical engineering, civil engineering, engineering physics, and chemical engineering.

### Track Announcement

Coach Styrna would like a large turnout of candidates for positions on the indoor track team. Several excellent athletes were lost from last year's team so the desirability of a large turnout is even more important.



KOOL ANSWER

## KOOL CROSSWORD

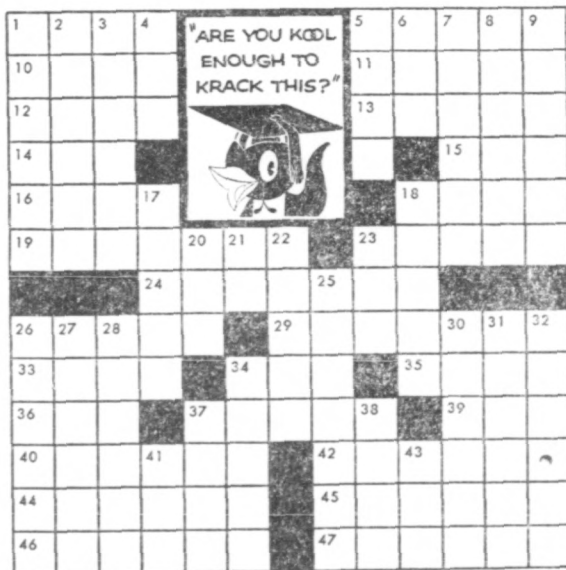
No. 12

### ACROSS

1. What familiarly did to contempt
5. Decorators
10. Singular jeans
11. Done for, German style
12. Employed
13. When you do it to a girl, it can make you sear
14. Smoking Kools is great
15. Fil's big brother
16. Was really high
18. Handy rebuff
19. Carrosses, by crewmen
23. Come up, come all the way up to
24. The Magic found in 23 Across
26. A nut
29. Always good for a laugh
33. The arid in melanolia
34. Marilyn's favorite joint
35. Faculty VIP
36. Neither's colleague
37. Thicket, not a suitable hide-out for robbers
39. Small hill dweller
40. Sort of a lemon
42. Deep thought
44. Tristan's girl friend
45. More nervous
46. You can see through 'em
47. Politers who work for Gallup

### DOWN

1. They take Council in Iowa
2. End product
3. Less of an odd ball
4. Achieved
5. Old card game, with no kitty?
6. Bills in a bunch
7. God, what a man!
8. Boot Hill activity
9. Soaks, in a precipitous way
17. Man's favorite extracurricular study
18. So cool it's frozen
20. Knowledgeable nickname
21. Almost the end
22. Bulosque take-off
23. Diminutive knockouts
25. Devotee of 34 Across?
26. You have it in hand
27. Kay Thompson's s'little friend
28. What to buy your Kools by
30. Vegetable headgear?
31. Mounted soldier; a kind of cutup
32. Matriculates
34. Rehabilitates blades
37. Morse's secret
38. Earth goddess
41. "Treasure Island" author (abbr.)
43. 60% agent



When your throat tells you it's time for a change, you need a real change...

YOU NEED THE  
*Menthol Magic*  
 OF KOOL



© 1959, Brown & Williamson Tobacco Corp.

## See RUSSIA for yourself in 1960

American conducted Student/Teacher Economy tours by Maupintour—the best routes at lowest costs. From \$495, all-inclusive, summer departures.

- **RUSSIA BY MOTORCOACH.** Beginning Helsinki or Warsaw. See country byways, rural towns plus Moscow, Leningrad. 17 days.
- **DIAMOND GRAND TOUR.** Russia, Crimea, Ukraine, Czechoslovakia, Poland, Germany, Passion Play, Bayreuth Festival, Berlin, Scandinavia, Benelux, Austria, Switzerland.
- **COLLEGIATE CIRCLE TOUR.** Cruise Black Sea, see the Caucasus, Ukraine, Crimea, Russia, White Russia, Poland, Czechoslovakia, Scandinavia, Benelux, Berlin, England, Luxembourg, France.
- **EASTERN EUROPE ADVENTURE.** New route. Bulgaria, Roumania, new hiway through Southern Russia, Ukraine, Crimea, Moscow, White Russia, Czechoslovakia, Poland, Krakow, Dresden, Berlin, Germany, Austria.

**Maupintour** See your local Travel Agent or write  
 400 Madison Avenue  
 New York 17, New York

# Black Bears Undefeated In Two Tilts

## Bear Cagers Meet Vermont, Bowdoin Next

By Bill Mortensen

Three important games are facing the Maine Bears before the Christmas vacation calls a temporary halt to early season basketball. With two victories under their belts, the Bears are eager to continue their winning ways, and must do just that, to stay on top.

This Friday and Saturday the Big U basketeers face the University of Vermont at Burlington. Maine beat Vermont twice last year here at Orono, but both games were slender two point victories. Vermont is a good basketball school and they have a fine coach in John Evans. He no doubt will be pulling out all the stops to avenge Maine's wins last season. Vermont had a 12-10 win-loss record last season and their Frosh team wound up with a 7-5 record. Nearly 50 points a game left the University of Vermont when Clyde Lord, Bob Kuchar, and Bob Gallagher graduated. These three men were good and will be hard to replace, but Evans has Charlie Isles and Frank Giordano back in harness from the starting five, plus Harry Zingg, Ray Wiener, Ray Kelsey, and Fred Robinson. A promising newcomer, Beck, and several freshmen should strengthen the Vermont team.

On Tuesday the Black Bears host the Bowdoin Polar Bears. Bowdoin was the State Series cellar team last season, but lost several games by close margins. Maine came close to losing there last year as did other State Series clubs, but we feel Bowdoin is one of the weaker teams on the Maine schedule so we look for a Bear victory. Pete Scott, Al Simonds, and Bill Cohen form the nucleus of Bob Donham's squad. Some feel Bowdoin is stronger this year, but we'll all find out next Tuesday evening.

Maine's home game attendance record last year was 32,000 fans, it is one of the highest in America's small college schools, so let's keep coming and backing this fine team.

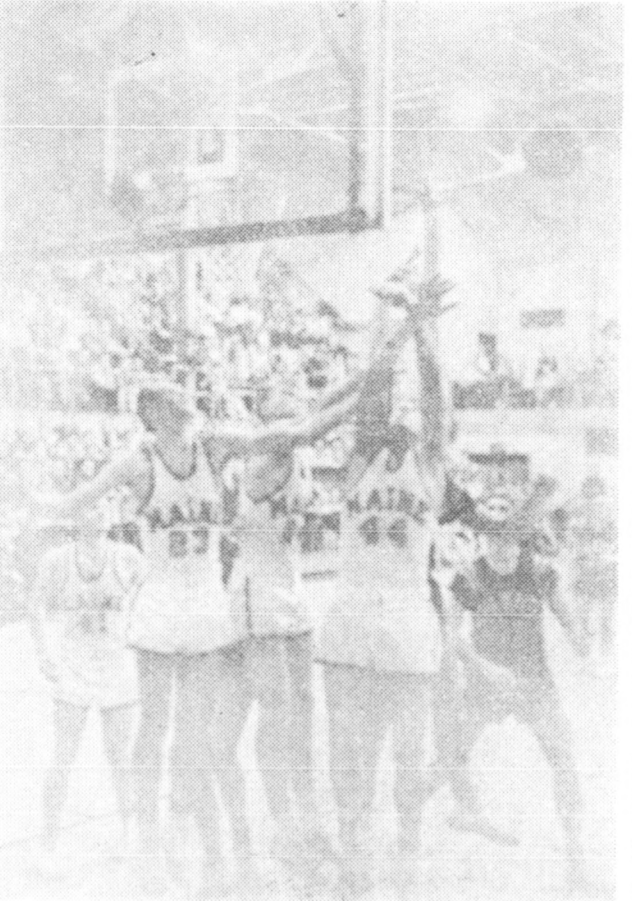
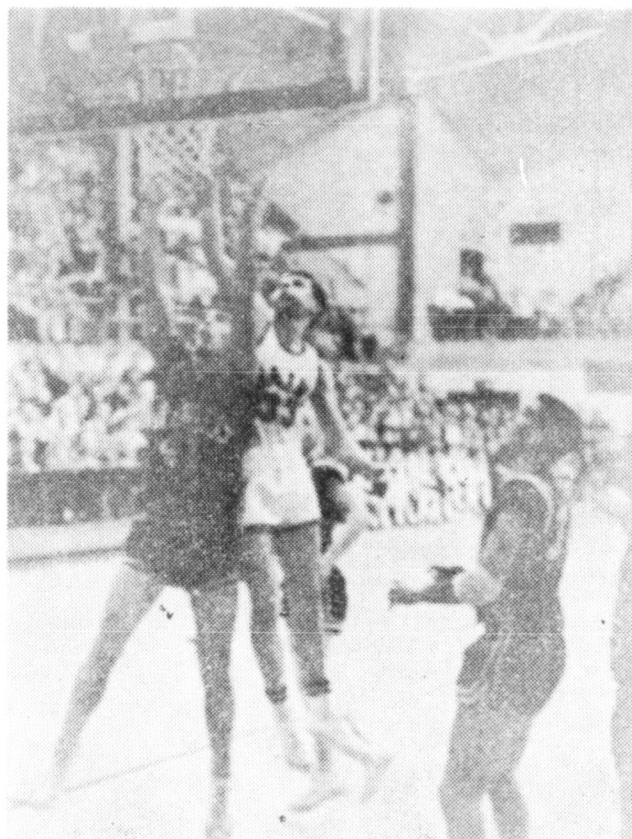
### MAINE SCOREBOARD

#### RESULTS: WEEK OF DEC. 3

Dec. 3  
Maine 93, Brandeis 79  
Maine Frosh 95, Ricker 53  
Dec. 5  
Maine 67, Bates 61  
New Hampshire 79, Vermont 60

#### NEXT WEEK, WEEK OF DEC. 10

Dec. 11  
Maine at Vermont  
Dec. 12  
Maine at Vermont  
Bowdoin at Colby  
Dec. 15  
Connecticut at Massachusetts  
Bates at Colby  
Bowdoin at Maine  
Washington STC at Maine (Frosh)  
Dec. 18  
Vermont at Massachusetts



Basketball action in the Maine-Brandeis game which Maine won 93 to 79.

## UMaine Five Captures Two Games Vs Brandeis, Bates

By Bill Mortensen

Two impressive victories for Maine's 59-60 Black Bears are in the record books. Last Thursday evening a team effort resulted in a 93-79 win over Brandeis University, and on Saturday the Bears copped a 67-61 State Series verdict over the Bates Bobcats.

In the Brandeis game the first half was one which exhibited some real fancy ball handling by the entire team. Wayne Champeon was worth a bushel of points with his unbelievable pass assists. Fans watching the contest showed their approval several times by applauding at the fine team play. With Champ breaking down the middle and Don Sturgeon and Skip Chappelle on the sides, moving at a fast pace, Brandeis just couldn't stop the fast break.

Berkman and Ellis hit for Brandeis, but the Judges just weren't in Maine's class that night. Larry Schiner was a dead eye throughout the game and wound up as top scorer with 24 points. Skip Chappelle, in his varsity debut, scored 19 points in the game and looked good on the end of the fast break. Don

Sturgeon scored 22 points and his fine rebounding was another boost to the Maine cause. Jon Ingalls and Bob Morin rebounded well while helping Maury Dore at the tough center slot.

At Bates College, Maine again came forth with a team effort in winning 67-61. The hosts were troublesome throughout the entire contest, but couldn't cope with Maine's experience and finesse. Sophomore Skip Chappelle was top scorer with a 19 point output, while Larry Schiner was second with 18. Don Sturgeon added 9 points, but was bothered with fouls. Jon Ingalls turned in a stellar performance of rebounding in the second half. Dick Sturgeon, recovering from a knee injury, and Bob Morin aided the Bears considerably, and Wayne Champeon continued his assist avalanche in the victory over Bates.

## Chadbourne Wins Tourney

The Chadbourne girls won the Dormitory Tournament, Dec. 4, by downing the Elms—39 to 35. Chadbourne emerged undefeated after ending the possibility of a three way tie with the Elms and a team comprised of No. Estabrooke, Stodder, and Balentine. Chadbourne's Barbi Clark lead the scoring of the final game with 17 points, while Faye Miles put in 15 points for the Elms.

The Chadbourne Champions consist of:

Forwards—  
Barbie Clark

Judy Gray  
Duffy Shaffer  
Sandy Smith  
Guards—  
Judy Dow  
Ann Griffiths  
Carole Higgins  
Elaine Murphy  
Donna Plummer  
Ann Weymouth  
Rita Whitten  
Joan Woodman

The ping pong singles and the badminton doubles tournaments have started.

## Bear Facts

by Rick Brennan, Sports Editor



## '59 Basketball Team Should Post Best U Maine Record

"We're a good team and we're going to give the opposition a lot of trouble." These words of varsity coach, Brian McCall, have been reflected in the play of the Black Bear five in the first two games of the basketball season. This year's squad, the finest and most capable in the school's history, should go a long way if they continue to play their present calibre of ball. Thus far, the team's ability to get rebounds has proven invaluable and, I feel, decisive in at least the game with Bates.

Here is the way the State Series will look:

Team	W	L	Pct.
Maine	7	2	.778
Colby	6	3	.667
Bates	5	4	.556
Bowdoin	0	9	.000

The Yankee Conference competition with the exception of Vermont has improved since last year. With this in mind, I would like to offer predictions on the outcome of the YC standings:

Team	W	L	Pct.
Connecticut	9	1	.900
Maine	7	3	.700
Rhode Island	7	3	.700
Vermont	3	7	.300
Massachusetts	2	8	.200
New Hampshire	2	8	.200

PLAYER OF THE WEEK: Larry Schiner, varsity forward, pumped forty-three points through the hoop last week, to lead the Bears to basketball wins over Brandeis and Bates.

## Fraternity Competition Appears More Keen

By Stan Allain

The intramural basketball season is three weeks old and the action is getting better all the time as the players gain their shooting eyes. Attendance has been good, and everyone is invited to attend the games.

The fraternity division is rolling along well with Phi Eta Kappa and Phi Mu Delta shaping up as strong candidates for title honors. Phi Eta

has added the services of tall, talented Bob Chapman, former Edward Little High ace, to their already strong club. Powerful Phi Mu ran up a season high of 97 points the other night against Theta Chi. Other teams showing good tournament possibilities are: ATO, Lambda Chi, Delta Tau, Sigma Chi, and Beta House.

The fraternity scores: Phi Mu 97, Theta Chi 45; Sigma Chi 51, SAE 35; Phi Gam 57, Alpha Gam 31;

ATO 41, Delta Tau 39, and Phi Eta 56, Phi Kap 45.

The dormitory scores: ND 4&5 41, So. Apts. 36; Gannett 3 56, Gannett 2 39; Hart 3 35, Hart 2 32; Cabins 41, ND2&3 36; Gannett 1 69, Twagies 30; Corbett 2 60, Corbett 38; Corbett 1 43, So. HHH 42; Cabins 34, So. Apts. 24; ND 2&3 55, Bangor Comms. 42; No. HHH 41, Dunn 1 40.



# Cast Has Fun With Show

(Continued from Page One)

is Thomas' able dance partner, especially in the "Hideaway" number. During scene changes Cal and George Blouin, chorus director, provided entertaining duets accompanying pianists Liz England and Ellie Benway. However, their combined efforts suffered by comparison with the fine work done by Eleanor Epstein and "Sid" Baker singing the same duets. Ellie, as Babe, sang such contrasting numbers as "Hey, There," "I'm Not At All In Love" and "7½ Cents" in an unfailingly lovely voice.

Newcomers to the stage this season are Don Hayes, as the fun-loving Prez, and Joan Lerette as the zany Poopsie. Jim Feeney, who proved himself a comedian in the Masque's previous play, *Born Yesterday*, in the role of the cowering right-hand man, now proves himself versatile as the comical dogmatic employer, Has-

ler. Technical advisor and set designer Al Chapman did his usual excellent work. The picnic scene is exceptional. Because of the many scene changes, the large cast is required to help in moving scenery. After the finale of cast singing and dancing in pajamas, Al suggested that they be a little more quiet. In order to soften his words of criticism, he added, "... the tail end of this is a real hairy change, anyway."—Al's bid for immortality.

The rehearsal ended on the same note that it had begun, that of good humor, even gaiety. All in all, one leaves the musical wishing (at least this one does) that he could say "The Pajama Game is the game I'm in..." It looks like fun.

The University has 177 students in its graduate study division, 145 men and 32 women.

# Vespers To be Unique

(Continued from Page One)

Glee Club will perform *Advent* and *While Shepherds Watched*.

A third unique feature of this year's Vespers will be the singing of two pieces which, like those by Professor Sleeper, have never been sung before. They are *On Christmas Eve* and *Early One Morning* by Osborne. The Glee Club will sing these selections direct from manuscript.

Organist for the vespers will be Eula Morris. Darlene Worthen and Peter Parsons will accompany the glee club. Lector will be Robert Wood.

The chorus will be under the leadership of Professor Lewis Niven, head of the University's music department. C. Robert Groth, Jr., will conduct the 26 piece orchestra.

# Seymour, IBM Manager, To Speak

Thursday, December 10, 1959, Mr. Herbert K. Seymour, the manager of International Business Machines Corporation, will speak on Opportunities in The Sales Field.

This meeting is another in a series of vocational information programs co-sponsored by the University Placement Bureau and the College of Arts and Sciences. Another in the series includes a meeting Tuesday, December 15, on "Opportunities in Retail Merchandising." All meetings are

scheduled in the Totman Room of the Memorial Union at 4:10 p.m. and are open to any interested persons.

# Four Seniors Receive Francis Hovey Awards

Four University seniors have been awarded \$100 Hovey Memorial Scholarships. Presentation of the awards was made by Dean Weston S. Evans, of the College of Technology.

Those receiving the awards were David Gagnon, Melvin Boivie, Louis Agathos, and Robert Rowe.

Patronize Our Advertisers

FOR ARROW SHIRTS IN BANGOR  
THE → POINTS TO



175-181 Exchange Street • Bangor

wherever you go ...  
**YOU LOOK BETTER IN AN ARROW SHIRT**




For holiday festivities—or anytime you want to look your best—treat yourself to a lion's share of flattery—the kind you'll find in an Arrow. In 100% cotton oxford that stays neat, Arrows are a pleasure to wear ... And, a most acceptable gift for the man who prizes fine tailoring. In favorite collar styles, \$5.00.

**→ARROW→**  
Each Saturday see the NCAA football "Game of the Week"—NBC TV—sponsored by ARROW.

Your Exclusive Arrow Dealer In Old Town  
**A. J. GOLDSMITH**  
53 years of service to U. of M. students

get off your pad, dad...



**GO GREYHOUND**  
(for out-of-this-world savings!)

No, there's no Greyhound Scenicruiser® Service to outer space—yet. But if you're rocketing home for the holidays, there's no better way to go! It costs less than driving your own jalopy, too. With this exclusive Greyhound Service, you get more—pay less. Get in orbit...go Greyhound.

COMPARE THESE LOW, LOW FARES:	
Boston	\$8.75
Hartford	12.80
N.Y.C.	15.00
Wash., D. C.	22.00

\*plus tax

BAGGAGE PROBLEMS? You can take more with you on a Greyhound. Or, send your belongings by Greyhound Package Express. They arrive in hours and cost you less!

It's such a comfort to take the bus... and leave the driving to us!

154 Main Street  
Bangor  
Phone 3000



**Smith-Corona wins the vote**

SO NOW I'M AN ALSO-RAN, FRAN. SOME CAMPAIGN SPEECH...I COULDN'T READ MY OWN WRITING!

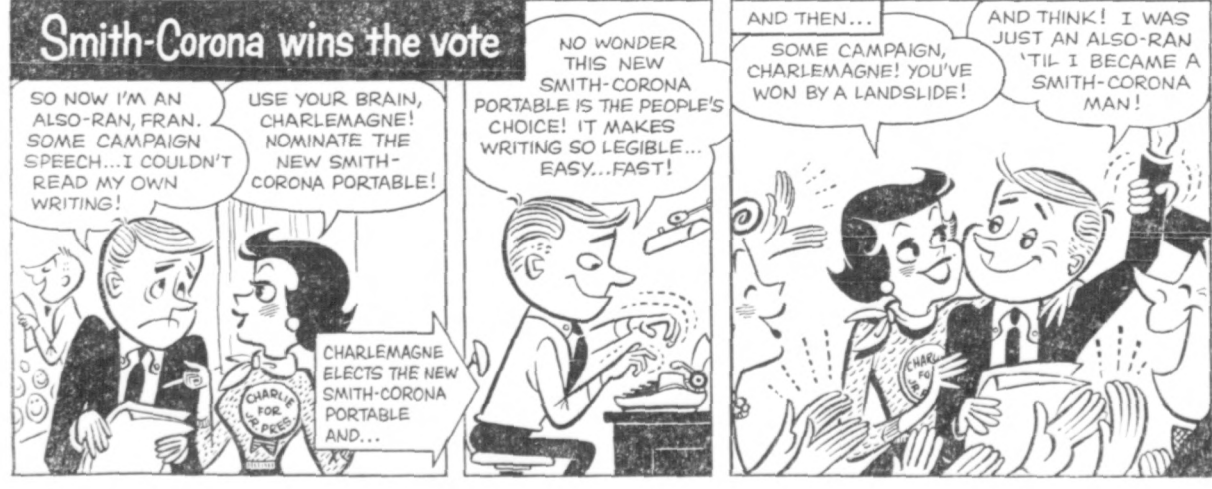
USE YOUR BRAIN, CHARLEMAGNE! NOMINATE THE NEW SMITH-CORONA PORTABLE!

CHARLEMAGNE ELECTS THE NEW SMITH-CORONA PORTABLE AND...

NO WONDER THIS NEW SMITH-CORONA PORTABLE IS THE PEOPLE'S CHOICE! IT MAKES WRITING SO LEGIBLE... EASY...FAST!

AND THEN... SOME CAMPAIGN, CHARLEMAGNE! YOU'VE WON BY A LANDSLIDE!

AND THINK! I WAS JUST AN ALSO-RAN 'TIL I BECAME A SMITH-CORONA MAN!



**FREE!**

Get Smith-Corona's new portable now, and receive free from Smith-Corona a \$23.95 course on records that teaches touch typing in just 10 days!



New in style! speed! spirit! Smith-Corona's excitingly styled new portable... first in ease and elegance. Choice of 5 colors. Only \$5 down, 24 months to pay.

# New Te Feature Wire Se

By Glen

Six weeks ago partment heads started working associated Press University. Woff of the speech de W. Hamilton, j head, received ad for subscription December 23rd immediately sig machine was ins ary 4th.

Gardner and on the AP Wire came obvious th International ser its opton with Y University has service the entire ing these facilit programming fe for the student. He added that i news broadcast point of our de tainly be helpf radio."

The Associ tion service education an It is allowed because the s a closed circet fers from the that it was a t by the Amer pany. All m therefore spo pany, a syste vertising.

This particu New England Maine leg. Bri vice combines t national and n regional. New news. The info cannot be pul newspaper nor it can be annou cuit broadcast.

Hamilton wa ing this news w wire. He mai wire is less exp provide good and re-writing to use the ma in journalism c good news wr service would for the jourm gram since eve country has on ing for journal He added that other fields of World Prober International l Herbert H. Dean of the C ences, agreed and added th (Conti

# Rings On

Representa four Co., w Tuesday and and 13 to tal University of ring will be s the lobby of \$5 deposit is is ordered.

Joe Dion, Ring Comm who wishes t should contac representative the women's