

The University of Maine
DigitalCommons@UMaine

Maine Town Documents

Maine Government Documents

2015

Bowdoinham Maine Shoreland Zoning Map

Bowdoinham, Me.

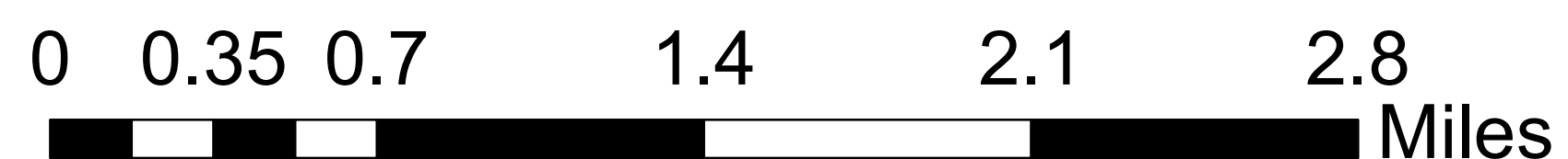
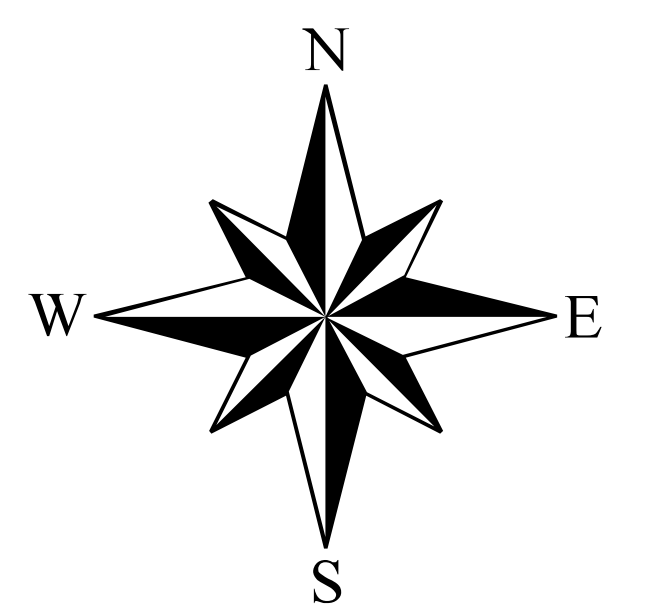
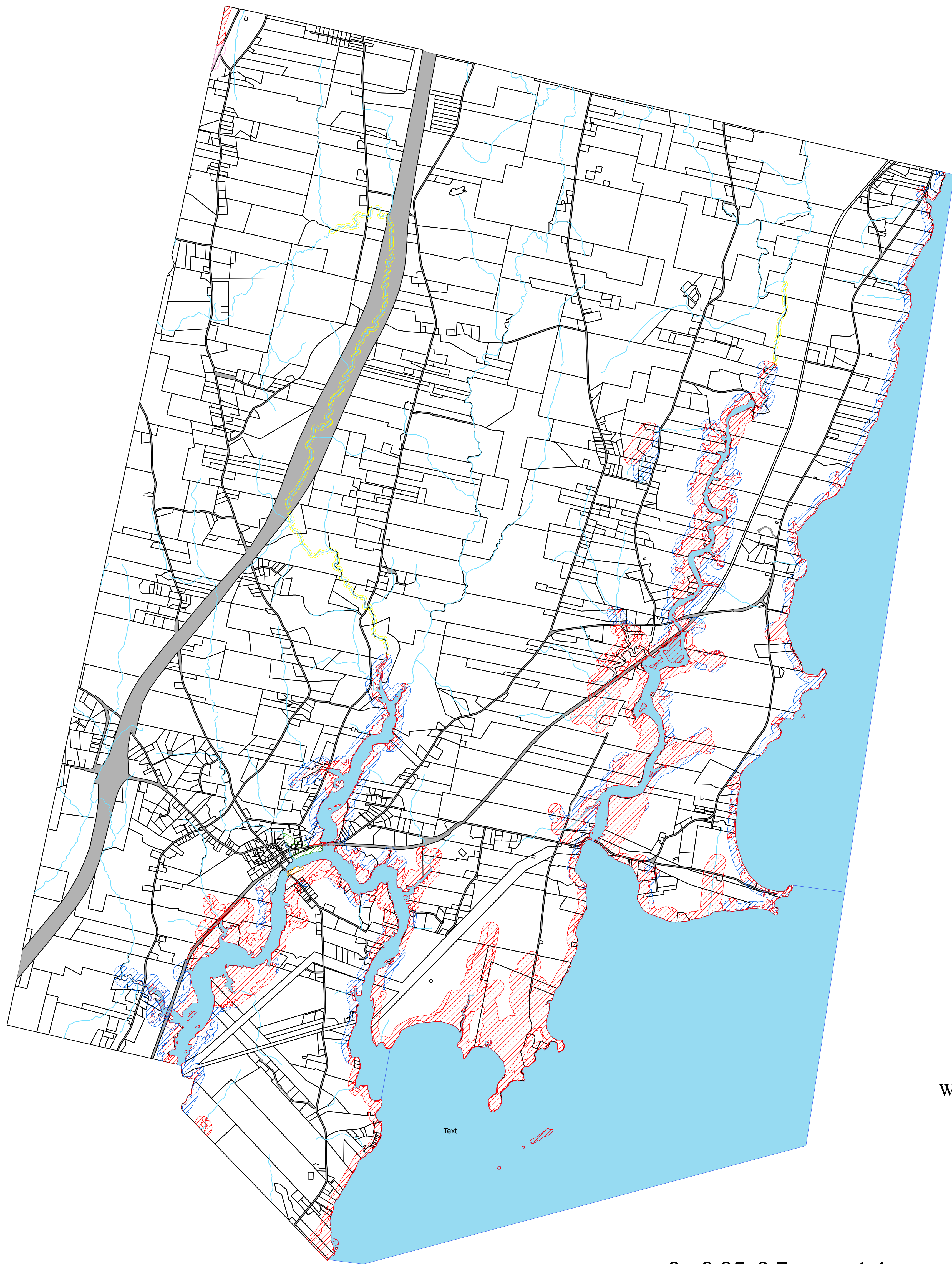
Follow this and additional works at: <https://digitalcommons.library.umaine.edu/towndocs>

Repository Citation

Bowdoinham, Me., "Bowdoinham Maine Shoreland Zoning Map" (2015). *Maine Town Documents*. 6501.
<https://digitalcommons.library.umaine.edu/towndocs/6501>

This Map is brought to you for free and open access by DigitalCommons@UMaine. It has been accepted for inclusion in Maine Town Documents by an authorized administrator of DigitalCommons@UMaine. For more information, please contact um.library.technical.services@maine.edu.

Town of Bowdoinham Official Shoreland Zoning Map



Effective Date: _____
Town Clerk: _____

Notes:

1. The Official Shoreland Zoning Map was adopted pursuant to Shoreland Zoning Amendments at Town Meeting on June 10, 2015.
2. The areas of the Resource Protection District are shown on this Official Shoreland Zoning Map through use of aerial data. The actual, on-the-ground location of the Resource Protection District shall be determined the District's description in the Land Use Ordinance and may be located by a professional surveyor.
3. Areas that are shown as Resource Protection on this Official Shoreland Zoning Map, but are proven not to be Resource Protection based on on-the-ground determination shall be considered to be the Limited Residential District.
4. Wetland areas contiguous with and at the same elevation as the normal high water line of the river and streams are considered part of those waterbodies.

Shoreland Zoning	
Shoreland Zoning District	
Type	
	Commercial Fisheries & Maritime Activities District
	General Development I District
	General Development II District
	Limited Commercial District
	Limited Residential District
	Resource Protection District
	Stream Protection District