

2012

Official Zone Map, Town of Wells, York County, Maine

Wells (Me.)

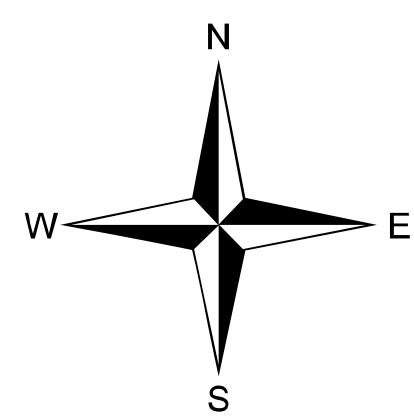
James W. Sewall Co.

Follow this and additional works at: <https://digitalcommons.library.umaine.edu/towndocs>

Repository Citation

Wells (Me.) and James W. Sewall Co., "Official Zone Map, Town of Wells, York County, Maine" (2012). *Maine Town Documents*. 2109.
<https://digitalcommons.library.umaine.edu/towndocs/2109>

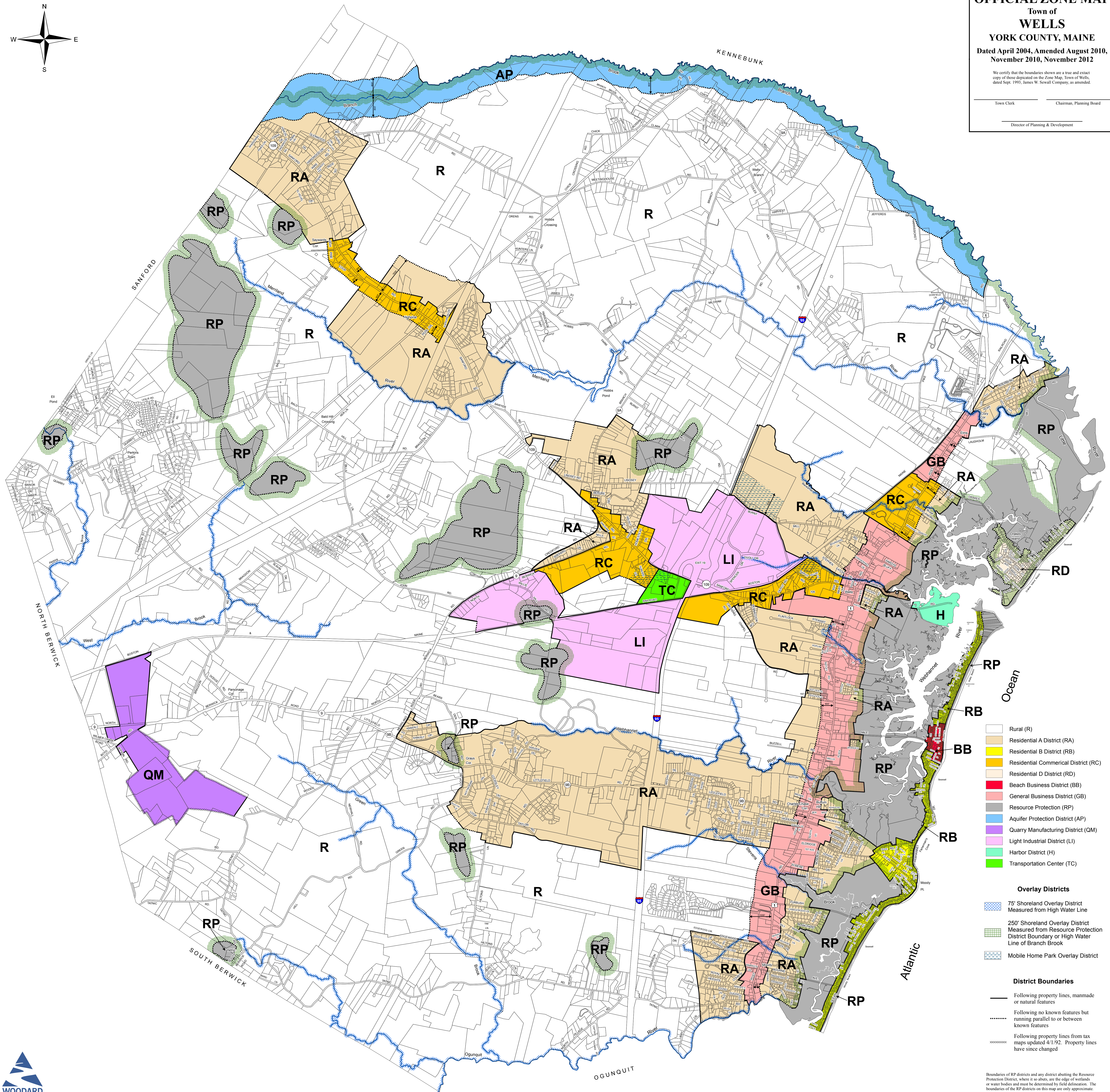
This Map is brought to you for free and open access by DigitalCommons@UMaine. It has been accepted for inclusion in Maine Town Documents by an authorized administrator of DigitalCommons@UMaine. For more information, please contact um.library.technical.services@maine.edu.



OFFICIAL ZONE MAP
Town of
WELLS
YORK COUNTY, MAINE
Dated April 2004, Amended August 2010,
November 2010, November 2012

We certify that the boundaries shown are a true and exact copy of those depicted on the Zone Map, Town of Wells, dated Sept. 1995, James W. Sewall Company, as amended.

Town Clerk _____ Chairman, Planning Board _____
Director of Planning & Development _____



- Rural (R)
- Residential A District (RA)
- Residential B District (RB)
- Residential Commercial District (RC)
- Residential D District (RD)
- Beach Business District (BB)
- General Business District (GB)
- Resource Protection (RP)
- Aquifer Protection District (AP)
- Quarry Manufacturing District (QM)
- Light Industrial District (LI)
- Harbor District (H)
- Transportation Center (TC)

- Overlay Districts**
- 75' Shoreland Overlay District Measured from High Water Line
 - 250' Shoreland Overlay District Measured from Resource Protection District Boundary or High Water Line of Branch Brook
 - Mobile Home Park Overlay District

- District Boundaries**
- Following property lines, manmade or natural features
 - Following no known features but running parallel to or between known features
 - Following property lines from tax maps updated 4/1/92. Property lines have since changed

Boundaries of RP districts and any district abutting the Resource Protection District, where it so abuts, are the edge of wetlands or water bodies and must be determined by field delineation. The boundaries of the RP districts on this map are only approximate.

Property base line information was compiled from existing tax maps prepared by James W. Sewall Co., 1975. Updated 5/97. Updated 4/99. Updated 4/04. Updated 4/10. Updated 8/13.

