

2011

Zoning Map, Standish, Maine

Fairpoint Communications

GIS Solutions

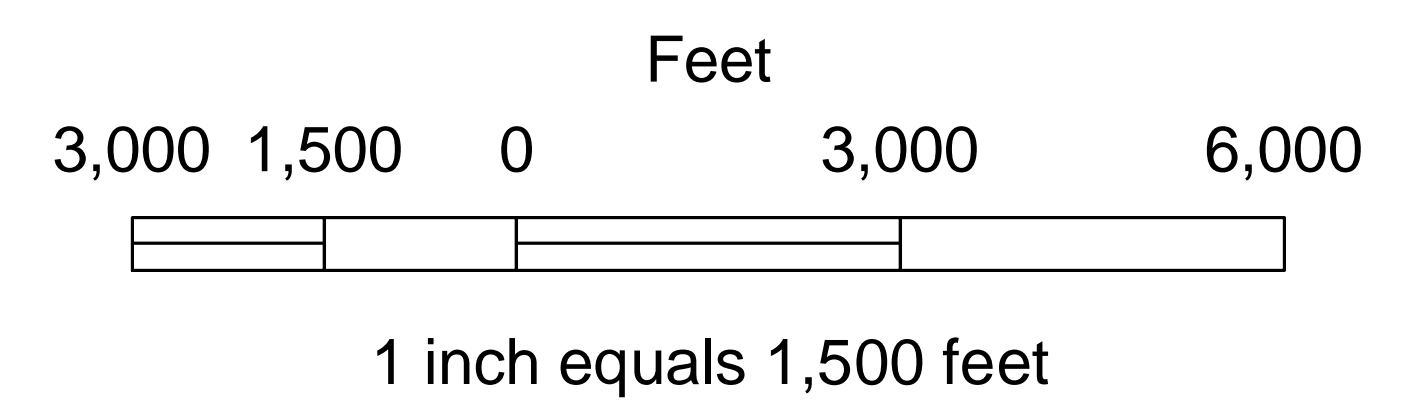
Follow this and additional works at: <https://digitalcommons.library.umaine.edu/towndocs>

Repository Citation

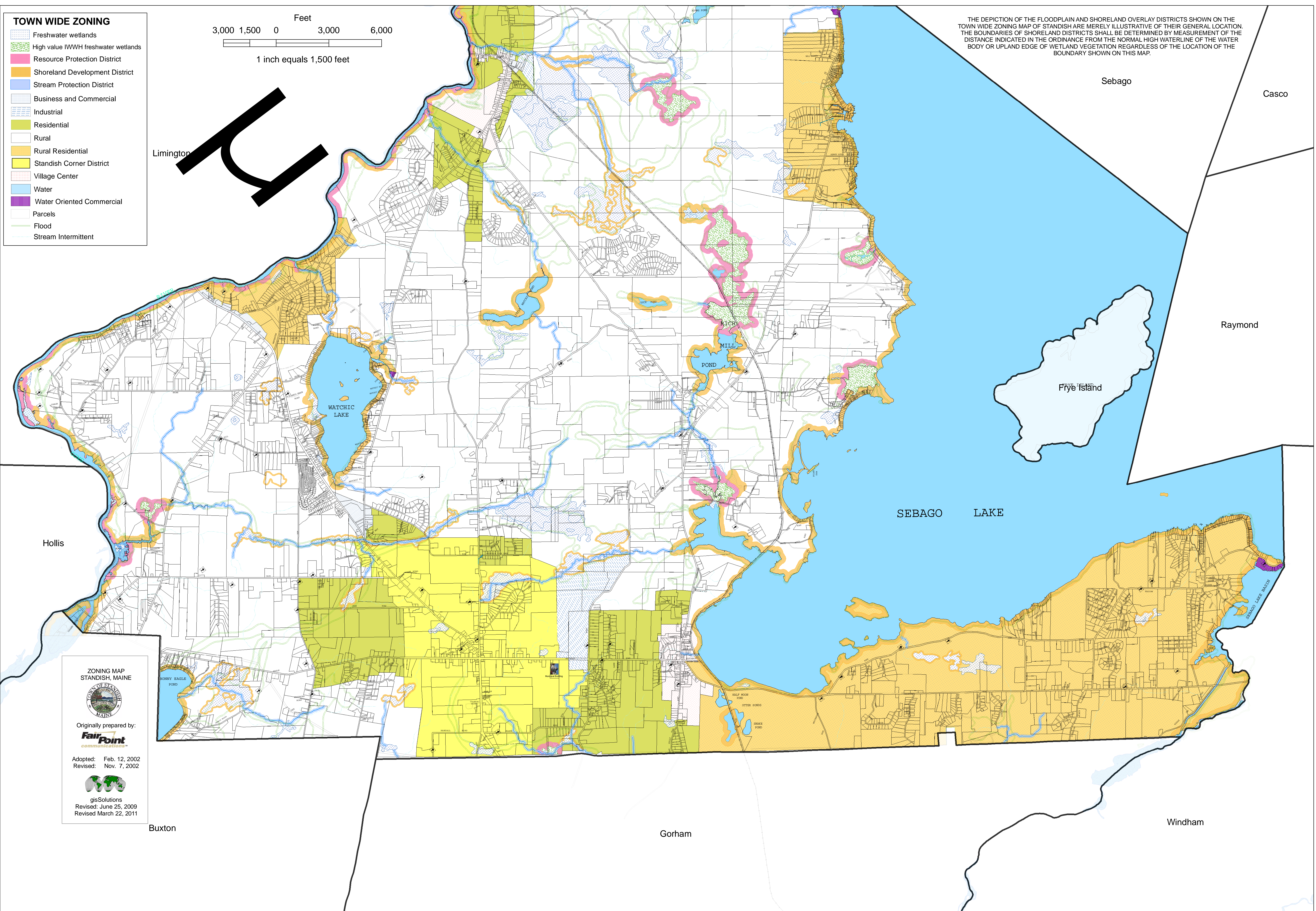
Fairpoint Communications and GIS Solutions, "Zoning Map, Standish, Maine" (2011). *Maine Town Documents*. 1089.
<https://digitalcommons.library.umaine.edu/towndocs/1089>

This Map is brought to you for free and open access by DigitalCommons@UMaine. It has been accepted for inclusion in Maine Town Documents by an authorized administrator of DigitalCommons@UMaine. For more information, please contact um.library.technical.services@maine.edu.

- TOWN WIDE ZONING**
-  Freshwater wetlands
 -  High value IWWH freshwater wetlands
 -  Resource Protection District
 -  Shoreland Development District
 -  Stream Protection District
 -  Business and Commercial
 -  Industrial
 -  Residential
 -  Rural
 -  Rural Residential
 -  Standish Corner District
 -  Village Center
 -  Water
 -  Water Oriented Commercial
 -  Parcels
 -  Flood
 -  Stream Intermittent



THE DEPICTION OF THE FLOODPLAIN AND SHORELAND OVERLAY DISTRICTS SHOWN ON THE TOWN WIDE ZONING MAP OF STANDISH ARE MERELY ILLUSTRATIVE OF THEIR GENERAL LOCATION. THE BOUNDARIES OF SHORELAND DISTRICTS SHALL BE DETERMINED BY MEASUREMENT OF THE DISTANCE INDICATED IN THE ORDINANCE FROM THE NORMAL HIGH WATERLINE OF THE WATER BODY OR UPLAND EDGE OF WETLAND VEGETATION REGARDLESS OF THE LOCATION OF THE BOUNDARY SHOWN ON THIS MAP.



**ZONING MAP
STANDISH, MAINE**



Originally prepared by:
**FairPoint
communications**

Adopted: Feb. 12, 2002
Revised: Nov. 7, 2002



gisSolutions
Revised: June 25, 2009
Revised March 22, 2011