

2009

## Standish, Maine Selected Maps

Northern Geomatics

Follow this and additional works at: <https://digitalcommons.library.umaine.edu/towndocs>

---

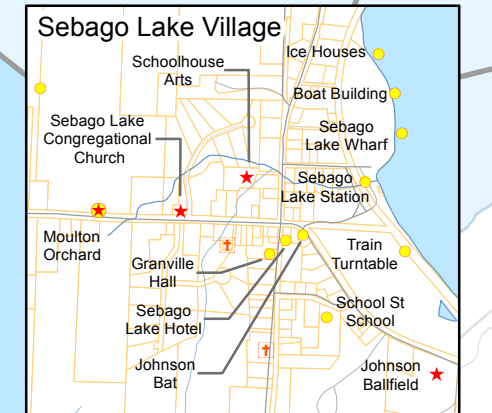
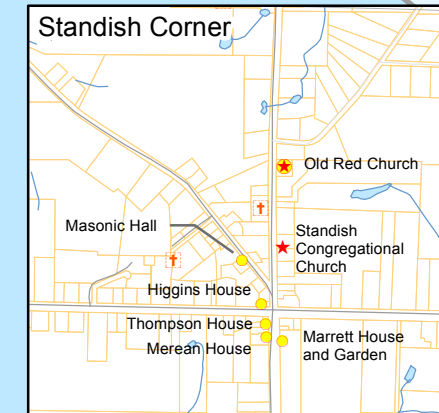
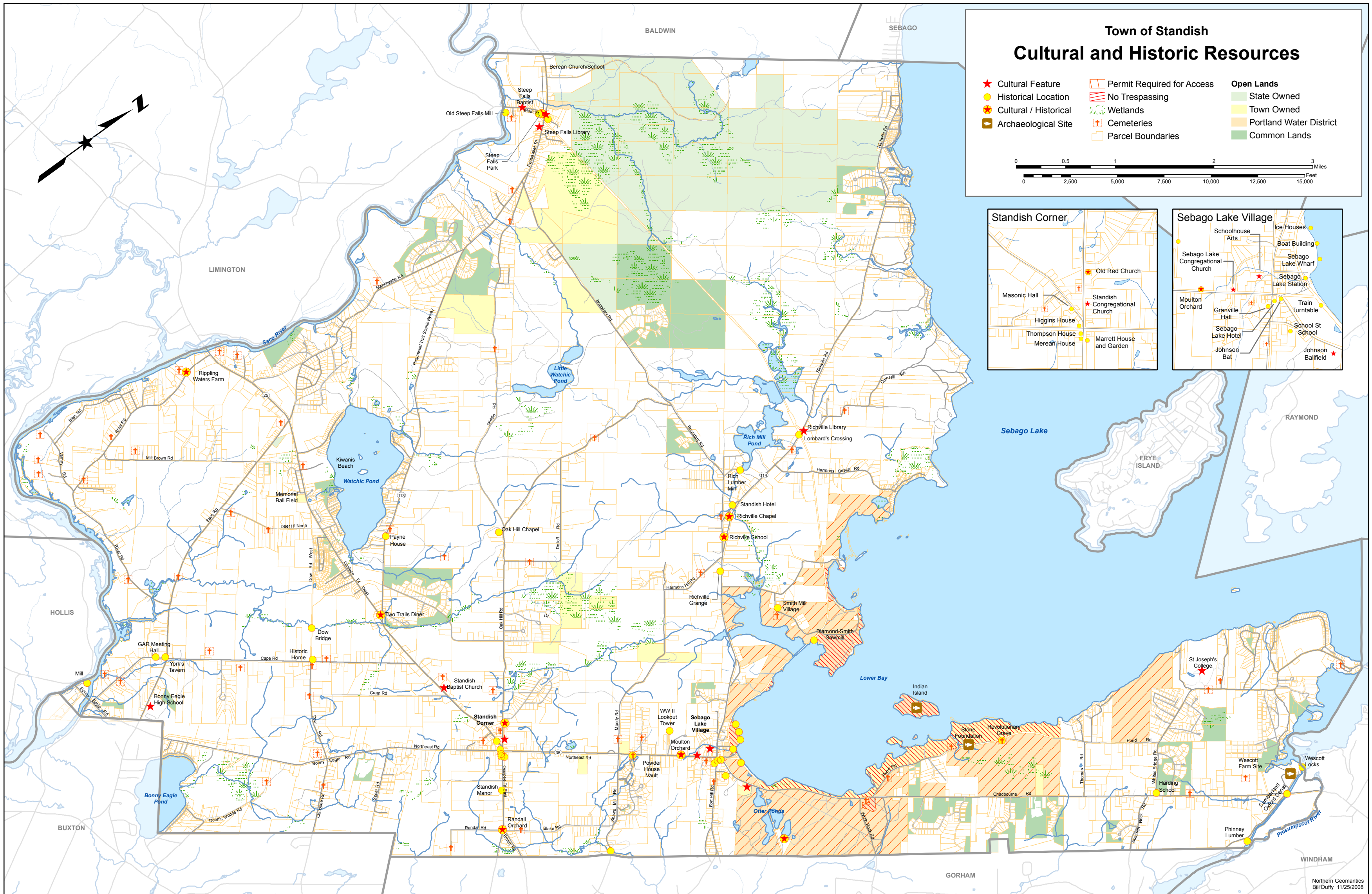
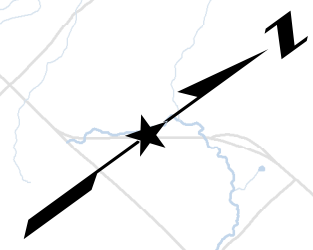
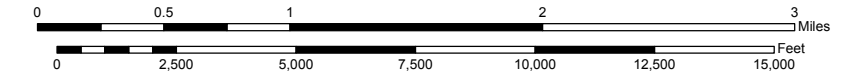
### Repository Citation

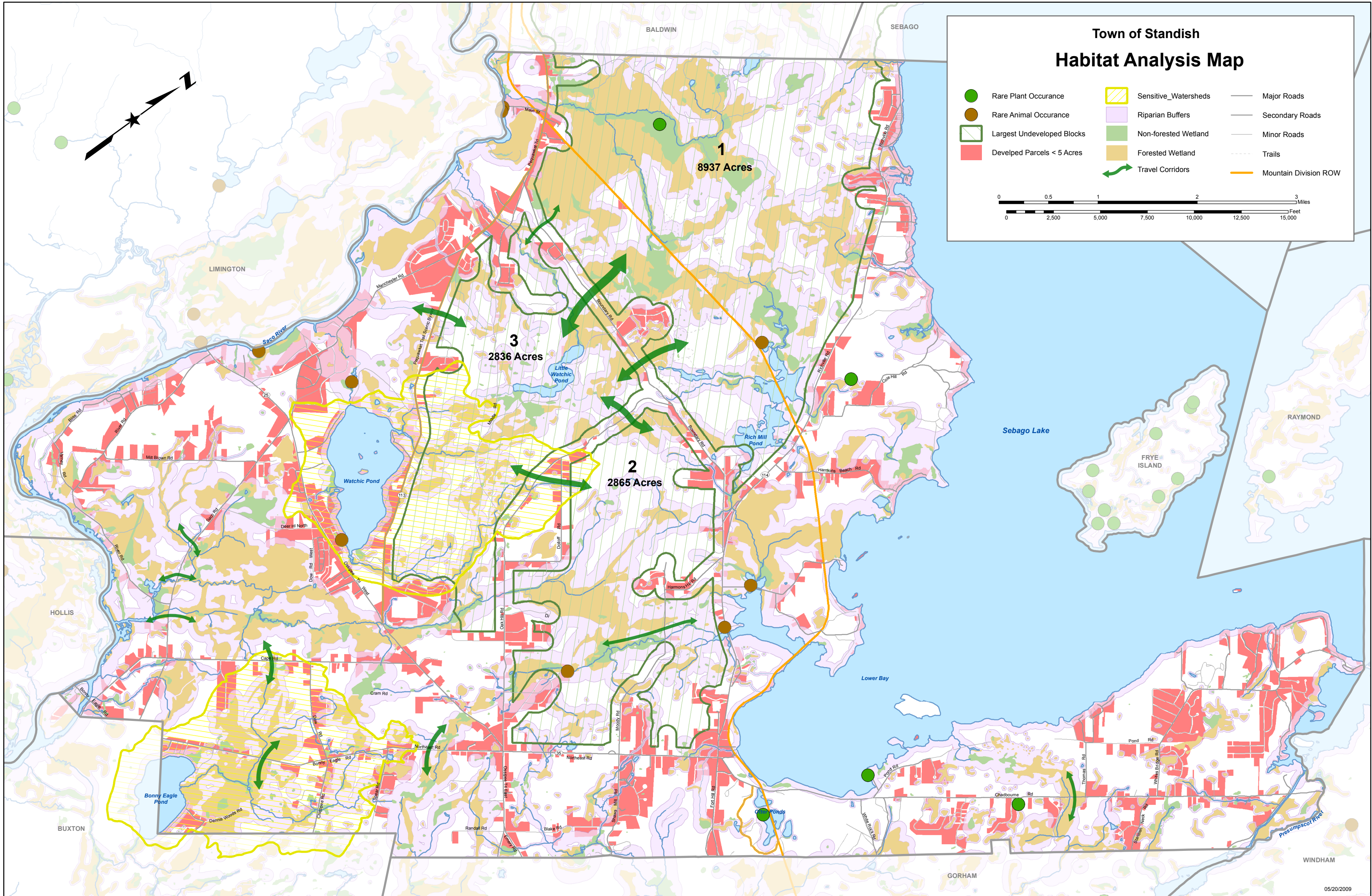
Northern Geomatics, "Standish, Maine Selected Maps" (2009). *Maine Town Documents*. 1088.  
<https://digitalcommons.library.umaine.edu/towndocs/1088>

This Map is brought to you for free and open access by DigitalCommons@UMaine. It has been accepted for inclusion in Maine Town Documents by an authorized administrator of DigitalCommons@UMaine. For more information, please contact [um.library.technical.services@maine.edu](mailto:um.library.technical.services@maine.edu).

# Town of Standish Cultural and Historic Resources

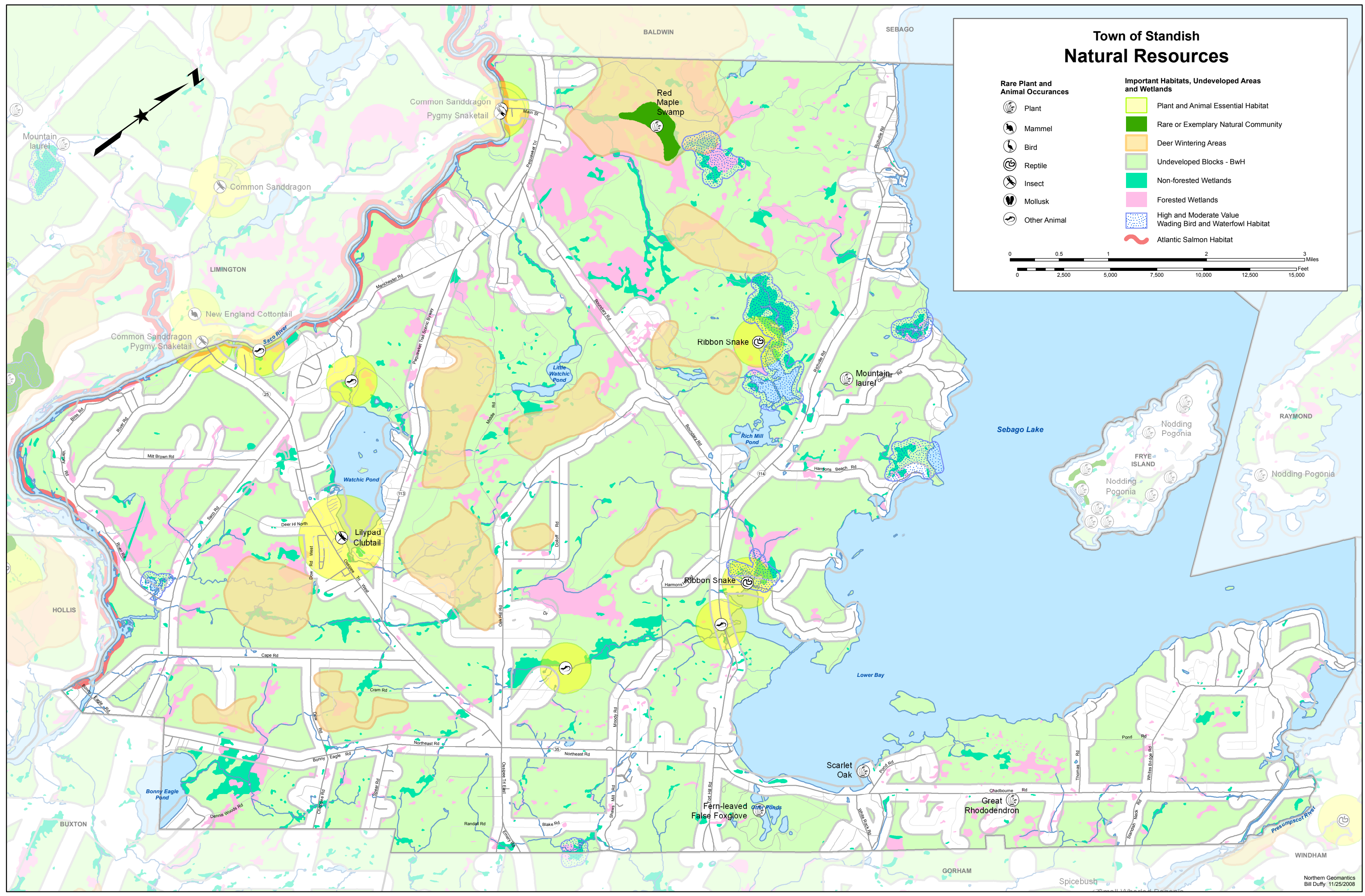
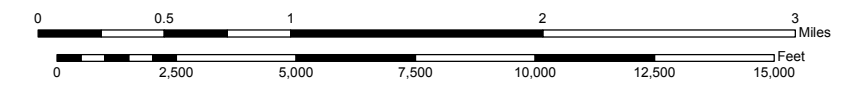
- ★ Cultural Feature
- Historical Location
- ★ Cultural / Historical
- 📍 Archaeological Site
- ⬮ Permit Required for Access
- ⬮ No Trespassing
- 🌿 Wetlands
- ✠ Cemeteries
- ⬮ Parcel Boundaries
- Open Lands**
- State Owned
- Town Owned
- Portland Water District
- Common Lands

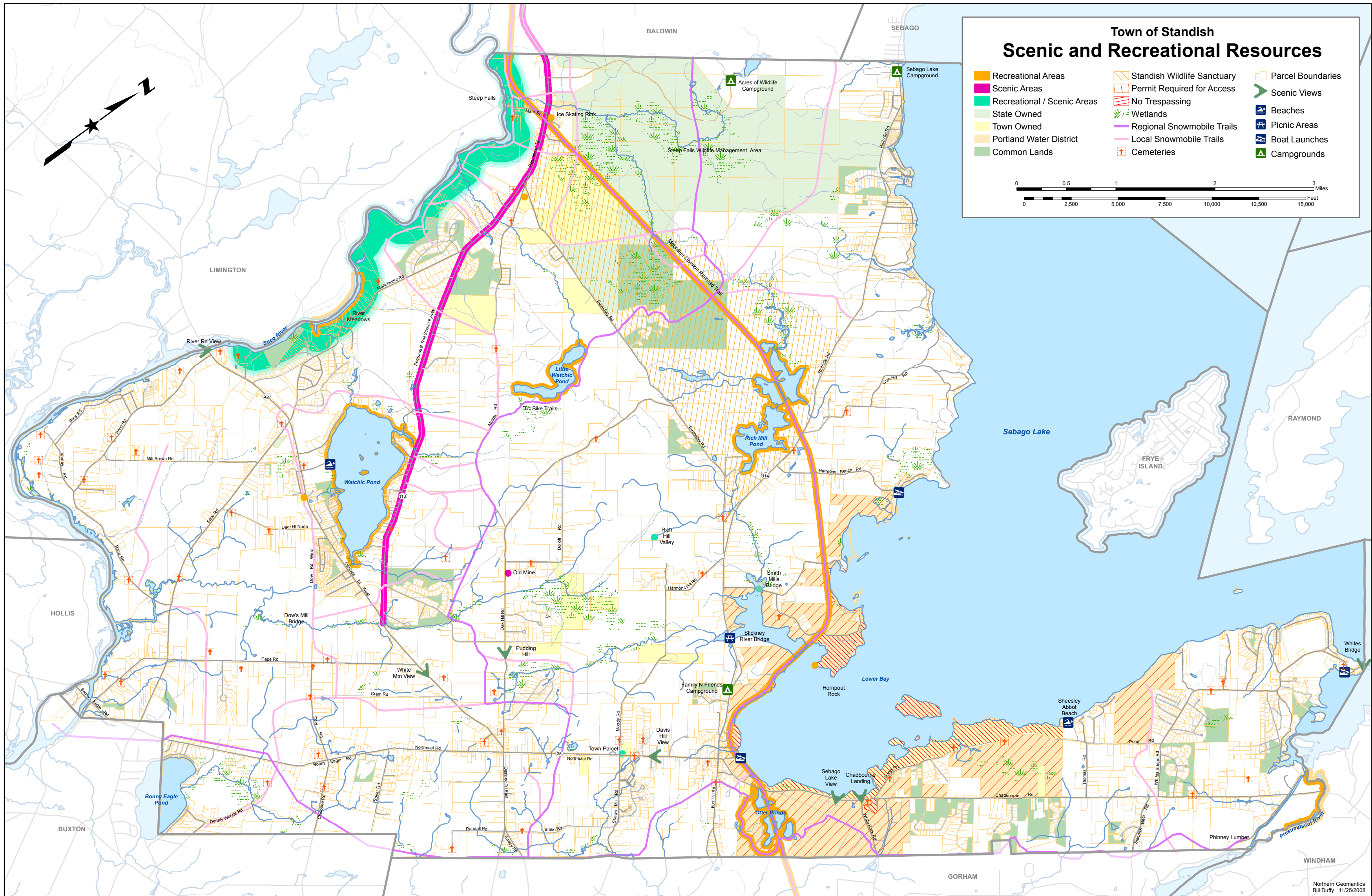




# Town of Standish Natural Resources

- Rare Plant and Animal Occurrences**
- Plant
  - Mammal
  - Bird
  - Reptile
  - Insect
  - Mollusk
  - Other Animal
- Important Habitats, Undeveloped Areas and Wetlands**
- Plant and Animal Essential Habitat
  - Rare or Exemplary Natural Community
  - Deer Wintering Areas
  - Undeveloped Blocks - BwH
  - Non-forested Wetlands
  - Forested Wetlands
  - High and Moderate Value Wading Bird and Waterfowl Habitat
  - Atlantic Salmon Habitat





# Town of Standish Scenic and Recreational Resources

- Recreational Areas
- Scenic Areas
- Recreational / Scenic Areas
- State Owned
- Town Owned
- Portland Water District
- Common Lands
- Standish Wildlife Sanctuary
- Permit Required for Access
- No Trespassing
- Wetlands
- Regional Snowmobile Trails
- Local Snowmobile Trails
- Cemeteries
- Parcel Boundaries
- Scenic Views
- Beaches
- Picnic Areas
- Boat Launches
- Campgrounds

