

RESEARCH ARTICLE

Parameter-free aggregation of value functions from multiple experts and uncertainty assessment in multi-criteria evaluation

Beni Rohrbach¹, Robert Weibel¹, and Patrick Laube²

¹Department of Geography, University of Zurich, Switzerland

²Geoinformatics Research Group, Zurich University of Applied Sciences, Switzerland

Received: July 14, 2017; returned: October 22, 2017; revised: February 16, 2018; accepted: April 24, 2018.

Abstract: This paper makes a threefold contribution to spatial multi-criteria evaluation (MCE): firstly by presenting a new method concerning value functions, secondly by comparing different approaches to assess the uncertainty of a MCE outcome, and thirdly by presenting a case-study on land-use change. Even though MCE is a well-known methodology in GIScience, there is a lack of practicable approaches to incorporate the potentially diverse views of multiple experts in defining and standardizing the values used to implement input criteria. We propose a new method that allows generating and aggregating non-monotonic value functions, integrating the views of multiple experts. The new approach only requires the experts to provide up to four values, making it easy to be included in questionnaires. We applied the proposed method in a case study that uses MCE to assess the potential of future loss of vineyards in a wine-growing area in Switzerland, involving 13 experts from research, consultancy, government, and practice. To assess the uncertainty of the outcome three different approaches were used: firstly, a complete Monte Carlo simulation with the bootstrapped inputs, secondly a one-factor-at-a-time variation, and thirdly bootstrapping of the 13 inputs with subsequent analytical error propagation. The complete Monte Carlo simulation has shown the most detailed distribution of the uncertainty. However, all three methods indicate a general trend of areas with lower likelihood of future cultivation to show a higher degree of relative uncertainty.

Keywords: multi-criteria evaluation, land use change, value functions, sensitivity analysis, uncertainty, Monte Carlo simulation

1 Introduction

Multi-criteria evaluation (MCE) is a standard methodology in the context of GIScience, with many applications, including the evaluation of potential future land use change. Despite the ubiquitous use of MCE, however, there is a lack of approaches that allow integrating the views of multiple experts in defining the input criteria values, and that are both straightforward to use and transparent regarding the uncertainty that is generated in the MCE.

In this paper, we propose a new, easy-to-use method that enables the integration of the judgments of multiple experts into aggregate, non-monotonic value functions; further, we show how the uncertainty of the MCE outcomes can be assessed. We apply our method to a case study using MCE with multiple experts forecasting the extent of vineyards in a wine-growing area in Switzerland. Within the study area, the extent of vineyards declined by about 4% within the past decade and continues to decline. This land use change has implications for landscape beauty, the economic structure of the region as well as the social cohesion [3, 10, 26]. At the same time, this development allows the conversion of areas formerly used as vineyards to other uses, such as biodiversity conservation areas, potentially adding ecological corridors between habitats formerly separated by vineyards. Policy makers require predictions of the land use change with a high spatial resolution, in order to proactively react to the current development.

In summary, the paper makes three contributions, two methodological contributions and an applied one. First, we make a contribution to MCE, by introducing a new, simple and parameter-free method to elicit and combine value functions from multiple experts. Value functions are at the core of an important step within any MCE, which until present only few methods tackle. Second, we present a procedure to systematically assess the uncertainty in an MCE, comparing three methods for this purpose: a) one-factor-at-a-time variation, b) a simplified error propagation formula, and c) Monte Carlo simulation. Our results give guidance for further studies to better choose and discuss the results of their sensitivity analysis. Third, we make a contribution concerning our case study, the assessment of the suitability for wine-growing within the study area. In the context of this particular paper, the third contribution is of lesser importance and primarily serves to demonstrate the methodological contributions.

1.1 MCE methodology

MCE represents a structured way of formalizing a decision problem and accordingly comparing alternatives with one another [4]. MCE can help ranking alternatives according to their attributes (multi attribute decision-making) when having a single objective, or it can help finding the optimal values for attributes when having several objectives (multi objective decision-making) [32]. We subsequently focus on multi attribute evaluation, as our case study aims to rank land parcels in line with their likelihood to experience land use change based on their attributes, such as slope, soil suitability, and insolation. A multi objective problem, as a contrasting example, would be to find the land use configuration that delivers the most ecosystem services (with each ecosystem service representing a potentially conflicting objective). A spatial MCE, then, connects an MCE with spatial data by incorporating the spatial distribution of the attribute values. Most spatial MCEs follow the multi-attribute approach [31].



MCE traditionally comprises six steps [32], as outlined below. Since this manuscript makes methodological contributions to Steps 2 and 5, for the paragraphs concerning those steps a more detailed review of the latest related work is given and the particular research gaps relevant for this paper are specifically highlighted.

Step 1: Selecting criteria. This step typically considers the literature and experts to elicit the relevant criteria and the values defining them [27,38].

Step 2: Standardization. Subsequently, one needs to translate the measured values to a comparable unit (e.g., monetary units or a dimensionless utility) in a comparable range (often 0 to 1) [55]. There are various ways of doing so, mostly by applying a transforming function, e.g., by reclassifying classes of measured values into utility values or by applying a continuous value function [1,2]. The simplest, but ill-advised, way would be to distribute the standardized scores (i.e. 0 to 1) within the range of criteria values [9,56].

For estimating a value function, the bi-section technique is a prominent representative. Through this approach, one is asked to indicate the level of a measured value that corresponds to half of the utility, then with the level of 0.25 and 0.75 utility and finally the level of highest and lowest utility. The intermediate values then are linearly interpolated [22]. However, for the bi-section technique, the functions must be monotonic (i.e., continuously de- or increasing value with increasing input number) [55]. Other approaches yield differently shaped value functions [25], e.g., trapezoidal [35, p.243] or fuzzy membership [11] functions.

Aggregating value functions from the inputs of several participants is difficult, and further advances in group MCE methods are still to be accomplished [33]. Morgan [35] presented an iterative, Delphi-like 6-step procedure to calculate value functions with several experts. In the published literature, the value functions are chosen ad-hoc [36], combined with the weighting step [20], based on a single expert's opinion [5], or done in workshops [38]. However, to the best of our knowledge, there is no study presenting a method to elicit and aggregate non-monotonic value functions.

3: Weighting the value scores. One of the more traceable, hence transparent and consequently widespread, weighting methods is the Analytic Hierarchy Process (AHP) [31]. Recent studies have developed new scales for such comparisons, which are more robust concerning inconsistencies and better correspond to verbal expressions [12,46,48].

4: Aggregating value scores. This step aims at aggregating the weighted value scores. There are various different ways of aggregating the criteria, amongst them the Boolean Overlay, Weighted Linear Combination (WLC) and Ordered Weighted Averaging (OWA) methods [57]. Recent studies have complemented the classic aggregation toolbox with more elaborate and complex approaches involving fuzzy aggregation [32, p.231-232], logic scoring of preference [8], and Dempster-Shafer combination [7]. In the case of the WLC, the weighted and standardized criteria are added by summation, which is the most common way of achieving aggregation [32].

5: Sensitivity analysis. Most studies completely neglect to assess the sensitivity of the results [31], and if they do, they typically investigate the effect of changing one factor at a

time [33], such as by setting the value of a criterion to 0 or to 1. This follows the reasoning “what would have happened, if the measurement or the weighting of this criterion would be completely different.” Such an approach does not consider any possible interactions between criteria, their value functions, and their weightings [29].

The more sophisticated methods focus on assessing sensitivity by including the variation of all the criteria simultaneously, such as analytical calculation and probabilistic methods [32,33]. The probabilistic approach uses Monte Carlo simulation [14] or similar methods, such as bootstrapping [33]. Due to the greater versatility and the less constraining assumptions, Monte Carlo methods today have become the predominant approach to sensitivity assessments.

The analytical calculations are based on the formulae for error propagation from general error theory, according to which the total uncertainty is a combination of the uncertainties associated with the individual variable (expressed by the standard deviations of each variable). For reasons of simplicity, the covariance between the criteria often is neglected, which can lead to wrong conclusions. If, for example, high values of one criterion correlate with the low values of another, they compensate each other. If this happens systematically, i.e., if the criteria have a high covariance, the formula yields a higher variation than there actually is. Additionally, general error theory assumes errors to be normally distributed, with the variables being continuously differentiable [32].

In light of practical applications, there is a lack of empirical evidence delivered by studies comparing different methods of uncertainty propagation in MCE. Thus, within this study, we compare the “one-factor-at-a-time” approach, as well as the analytical approach and a Monte Carlo method of assessing uncertainties. Thereof, the “one-factor-at-a-time” could be considered the simplest, and the Monte Carlo approach the computationally most demanding approach.

6: Validation of the results: The validity of the results may be assessed for example in a stakeholder workshop, through interviews or by means of a questionnaire [27]. As this article focuses mainly on methodological contributions, the validation of the results is published in [42].

1.2 Related applications of MCEs

MCEs are well suited to land use predictions [54]. Schneider and Pontius [47], for example, calculate the likelihood of deforestation with a spatially explicit MCE. The quality of the predictions by such models varies, however [40]. Additionally, from a policy perspective, land use models should be simple and consider the perspectives of many stakeholders, as this would increase the overall acceptance associated with quantitative models [49].

Regarding the case study of viticulture presented here, there are a couple of applications using MCE to assess the suitability for wine-growing. Tonietto and Carbonneau [53] use MCE to classify worldwide wine-growing regions based on climate. Jones et al. [21] calculate viticulture suitability in the Umpqua valley in Oregon, USA based on soil, topography and climate. Irimia and Patriche [17] do the same, but in Moldavia and based on solar radiation, insolation, slope, and aspect. The study with the highest resolution and the most thorough evaluation was performed by Yau et al. [58] in the northwestern USA. At a resolution of 10m, they included topography, soil parameters, and climate. However,

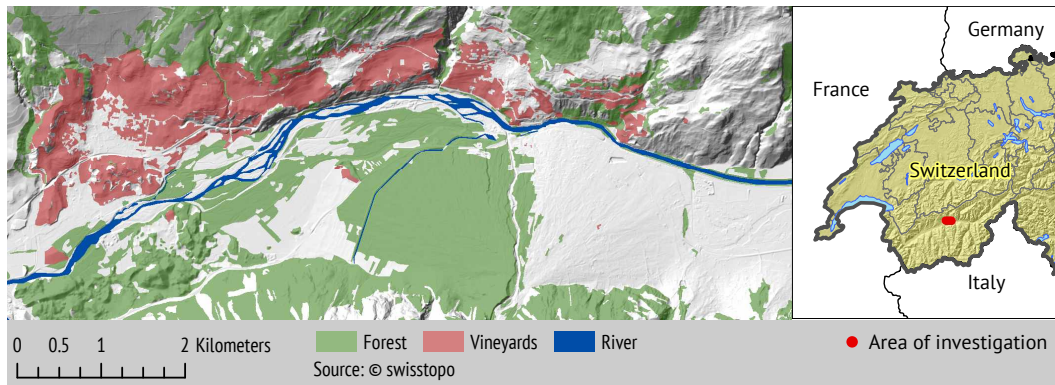


Figure 1: Vineyards in the study area in the year 2013. Source: Background hillshading, forests, and vineyards ©Swisstopo.

none of the above studies on viticulture followed an explicit procedure to assess the value functions, and none of the studies included a sensitivity analysis.

2 Methods

2.1 Study area

Our case study focuses on the region of Pfyn-Finges, a regional park in the Swiss part of the Rhône Valley, as illustrated in Figure 1. The area is mostly covered by forests (43%), unproductive land (27%), meadows (18%), and built-up areas (6%). Vineyards (4%) and the arable farming (3%) cover for the remaining land [52]. However, visually the vineyards are very prominent, as shown in *Fehler! Verweisquelle konnte nicht gefunden werden.*, and they have been a major source of income over a long period of time [3]. Since 2010, the area devoted to vineyards in the region of Pfy-Finges declined from over 410ha (4.1 km²) in the year 2006 to less than 396ha in the year 2014.

2.2 Criteria selection and sampling

Criteria were selected based on a literature review and interviews with three key experts. After discussions with two wine-growers and a first literature review, we selected an initial list of 10 criteria. After two meetings with a key stakeholder and further literature research, we were able to specify the most influential factors more precisely and arranged 9 criteria in a hierarchical tree with the top objective being “Most likely a vineyard in 25 years” (the period of 25 years was chosen as it reflects the average life expectancy of vines in commercial wine-growing).

For the MCE questionnaire, we sampled 13 experts from research, consulting, government, and the wine-making industry. We approached them directly and sent them the questionnaire via eMail before the first author met them in person. Only one participant responded solely through eMail. Within the interviews, the criteria-tree was slightly mod-

ified in the first two expert interviews, and then stayed the same for the remaining 11 interviews (n=13). The result is displayed in Figure 5.

2.3 Value functions

We standardized the criteria values by using so-called value functions [16, 32], which reclassify the criteria-layers values to values on a normalized scale, ranging 0–1. Figure 2 illustrates the normalization of a 4-pixel raster. The resulting value corresponds to the probability that this pixel will be a vineyard in 25 years based on this criterion. Therefore, the value function may vary according to the decision-maker [1, 25], as well as in space [16, 32]. In our case, there were no indications of varying value functions over space.

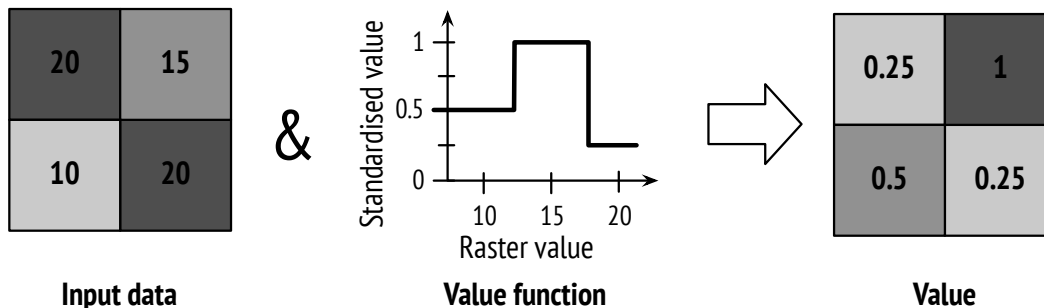


Figure 2: Standardization of the input data of one criterion. The figure uses an arbitrary 4-pixel raster and an arbitrary simple value function, which is used to normalize the raster cell values. Darker cells correspond to higher values.

Through interactions with the experts, we have come to realize that they talked in ranges of optimal values and thresholds for values consider too high or too low, respectively, similar to the value functions shown in Morgan [35, p. 243] and similar to the rough set theory [39]. This did not seem to be particular to the subject of wine-growing. In order to adjust the method to the experts' way of reasoning, we introduced these categories in our survey and propose to do so in other surveys too.

Based on the ranges given by the experts, we calculated classes of input (criterion) values that yield equal standardized values. The standardized value for a criterion value was calculated according to the number of experts stating that this criterion value lies within the optimal and/or the acceptable range. Figure 3 shows the value function for a single expert for an arbitrary criterion. One could think of, for example, altitude, and then understand the criterion values (horizontal axis) as meters. However, we intentionally left the unit dimensionless, as this illustration should only serve as an example.

Figure 3 corresponds to an expert stating that input values between 1000 and 1500 are optimal, and values below 500, or above 2000 are too low or too high, respectively. Hence, the range spanning 1000–1500 is considered optimal, whilst the range 500–2000 is acceptable. If the criterion value lies within the optimal range, it is assigned a standardized value of 1. If the value of the criterion falls within the acceptable but outside the optimal range

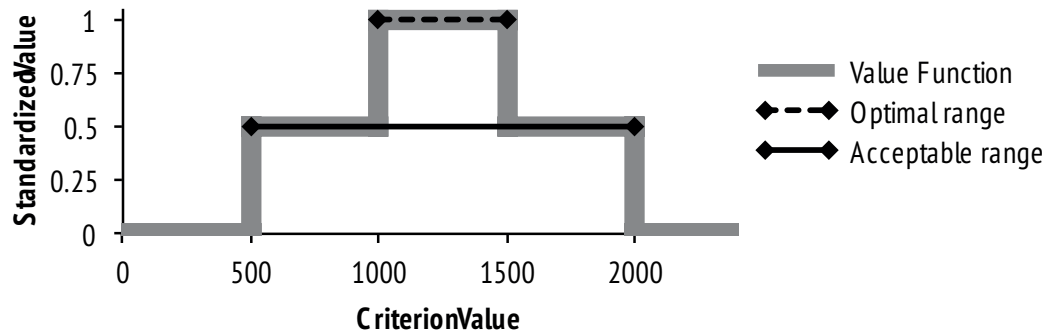


Figure 3: Value function for one criterion and a single expert. The four values provided by the expert are indicated with a black diamond.

(i.e. between 500 and 1000, or 1500 and 2000), it is given a standardized value of 0.5. If the criterion value falls outside both ranges, it receives a value of 0.

In our survey, we asked the experts to indicate the optimal range, the upper and the lower limit for each criterion. If the experts left out an upper or lower limit, we discussed the value and set the value to either zero or positive/negative infinity. For example, the “distance to the road” of a parcel cannot be too small, so the lower limit is given naturally (0m), while there still is an optimal and an acceptable upper limit (visible in Figure 7).

When taking several experts together, we propose the following procedure, as shown exemplarily in Figure 4 for three experts. In the example, all three experts denoted criterion values between 1500 and 2000 as optimal range. Two of the three experts considered values up to 3500 to be optimal, whereof one expert classified values from 1000 on as optimal. Our new method now calculates the standardized value out of the share of overlapping acceptable and optimal ranges given by the experts. For instance, in the illustration, there are three experts with a maximum of 6 ranges overlapping (3 optimal + 3 acceptable ranges). If all optimal ranges overlap (i.e. between the criteria value 1500 to 2000), the standardized value will be 1 (6 of 6). If two of three optimal ranges overlap (plus the three acceptable ranges), the standardized value is 0.83 (5 of 6). If there are only acceptable ranges overlapping, the standardized value equals 0.5 (3 of 6) and if there is only one expert stating the criterion value to be acceptable its standardized value is 0.16 (1 of 6). The resulting value function resembles very much a fuzzy membership function as, for instance, in [11]. However, the continuous curves in popular fuzzy membership functions are difficult to implement and are much more demanding concerning computing power, as opposed to the simple reclassify functions available in standard GIS raster analysis, while yielding only minor differences in practice.

For validation, the value functions generated using the above method are then compared to value ranges given in the literature, as proposed by [44] (Section 5.2).

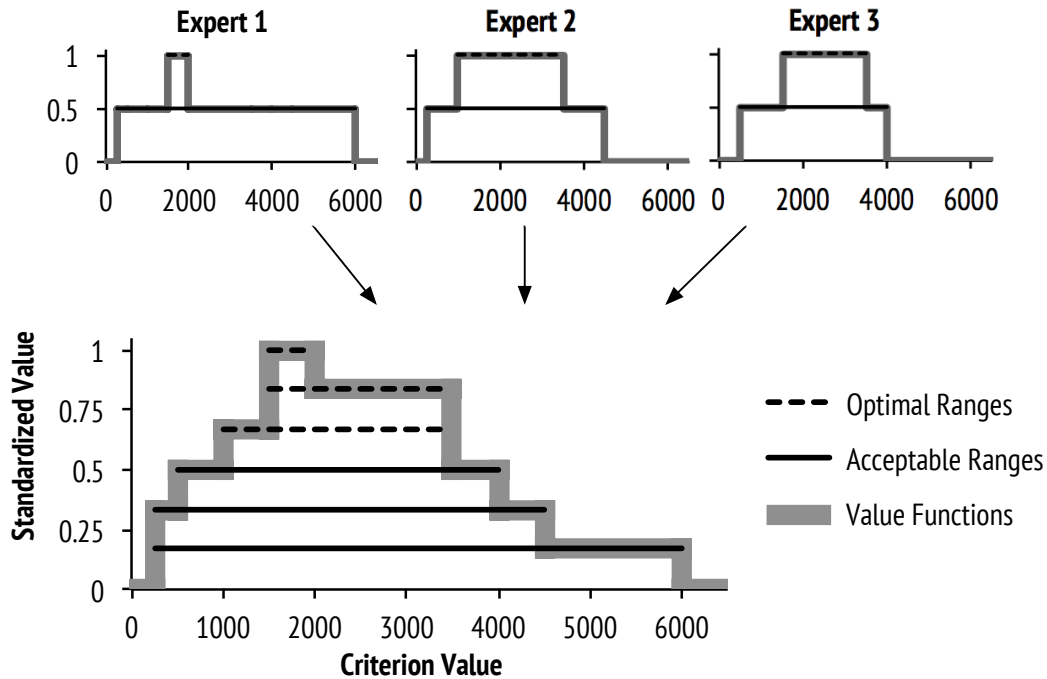


Figure 4: Value function for one criterion, as a result of the opinions of three experts. The three experts each provide a range for optimal and acceptable values, which then are combined by “stacking” them on top of each other.

2.4 Criteria weights

For our case study, we weighted the criteria according to the analytical hierarchy process (AHP) [45]. The participants performed pairwise comparisons on a diverging 9-point scale, ranging from one criterion dominating over another criterion to the other criterion being dominant, with both criteria equally important in the middle. Instead of using a ratio scale, as originally proposed [45], the balanced scale was used as it proved to better reflect people’s judgments and is more robust in the presence of inconsistencies [12,46]. In order to aggregate the individual weights matrix to a group weights matrix, we used the geometric mean as proposed in the literature [18]. We then calculated the criteria weights from the matrix using the “AHP” function in the R package “pmr” [28]. This yielded the weight of each criterion. The weighted values were then aggregated by linear summation.

2.5 MCE sensitivity analysis

We performed two probabilistic procedures and one nonprobabilistic procedure to calculate sensitivity to input variations and to assess the total uncertainty. The nonprobabilistic procedure is termed the “one-factor-at-a-time” variation, changing the weighting of a single criterion each time. The probabilistic procedures are based on the bootstrapping

method, which is well-known in terms of its abilities to estimate standard deviations [6,15]. The bootstrapping draws random samples of equal size from the total data with replacement. In our case, this means the random selection of several groups of 13 participants out of the total 13 participants, wherein some participants may occur several times. After analysing several runs and bootstrap sizes, we concluded that the Standard Deviation (SD) stabilized well before 500 bootstraps. As a summary, we performed the following three procedures to calculate the total uncertainty.

Complete Monte-Carlo simulation: In this procedure, we bootstrapped 500 representations of the sample and accordingly calculated the outcome of the MCE for each bootstrapped resample. We then calculated the SD per pixel out of the 500 runs. This approach includes all interaction effects, but is computationally demanding, as it requires to perform for each pixel 500 MCE runs (one per bootstrap) and to calculate the SD out of the 500 runs.

Analytical combination of the SD per criterion: We took the 500 bootstraps and calculated the SD per input value for each criterion, as shown as dashed line in the results (Figure 7). The SD per input value was used to reclass the spatial data, resulting in a spatial layer of SD per criterion. This spatial layer then was multiplied with the SD of the criterion's weight. We then aggregated the SD analytically per pixel by using the following error propagation formula: $Var_{tot} = \sum Var_{criteria}$, as suggested in Malczewski [32, p. 270]. This approach does not include interaction effects between criteria, but has the advantage of being computationally less demanding, as there are fewer operations to be performed per pixel. That is, one reclassification per criterion plus one summation.

“One-factor-at-a-time” variation: For this approach, the weight of a single criterion was set to 0 and in a second round to 1. The weights of all criteria were then normalized to again sum up to 1, with the value function staying the same throughout the process. As a consequence, two MCE runs were performed per criterion, resulting in a total of 18 runs. Then, the SD per pixel out of the 18 runs was calculated. This procedure is simple and computationally not demanding.

3 Results

3.1 Criteria selection

We identified nine criteria, which were found to determine whether or not a parcel would be used in the future, as summarized in Table 1. While eliciting the important criteria, two points of discussion remained. Firstly, some experts mentioned that it would be important to include the current condition of the vineyard, the so-called plant capital. However, as we asked for criteria determining whether the vineyard will still be cultivated in 25 years, we argued that, until then, the majority of the vineyards would need to be replanted in any case. This renders present plant capital unimportant, which in turn convinced most of the experts. Secondly, several experts mentioned the spatial distribution of the vineyards and their location relative to the vineyard as of crucial importance as this determines the time and cost needed for a wine-grower to cultivate the parcels. However, parcels might change ownership within the next 25 years, which would render such information incorrect.

Criterion	Description	Data source
Distance to road	Measures the distance between the edge of the production unit and the next road. Some parcels are only accessible by foot. The distance to the next road is crucial for transporting the harvest as well as fertilizing and pest management.	Streets: Swisstopo TLM 2014 (all streets wider than 2 m, manually checked). Production units: Cantonal survey of parcels, manually checked and aggregated to production units. Distance calculated using FME 2015.
Size of production unit	This layer was created based on cadastral data, and then checked manually. Some parcels are very small, e.g., due to partible inheritance and therefore not suited for large-scale production.	Production units: See above 3-D size calculated using FME 2015
Building zone	The vineyards, which are inside of the building zone, may be used for housing. This increases the land value and thus opens lucrative alternatives to wine farming.	Building zone layer: From the surveying office of the Canton of Valais
Slope	Moderate slope is often regarded as positive, as the terrain has better drainage and cold air does not accumulate.	From Swisstopo, 5m raster
Soil water retention	Low soil water retention capacities require a sophisticated and costly irrigation system. On the other hand, it was shown that moderate water stress is beneficial for the wine. Therefore, the soil water retention can be both too low and too high.	Soil: Soil survey from 2007, Canton of Valais
Aspect	Traditionally, only southern exposed slopes are used; however, in the study area, most vineyards are anyway southern exposed.	From Swisstopo, 5m raster
Altitude	Altitude together with the insolation determines temperature.	From Swisstopo, 5m raster
Insolation	Insolation is important for the ripening of the grapes, especially between April and October.	Calculated using ArcGIS solar radiation tools, based on the elevation data.
Precipitation	High precipitation can foster mould; low values can be compensated by irrigation, but increase costs. As winter and spring precipitation is not crucial, we summed the precipitation from July to October	25m raster, based on [59], resampled to 5m

Table 1: Criteria used within the MCE.

We decided to use a 5m raster as a) several input variables were present in this resolution and b) it ensured, that every production unit contained several raster cells, which made the further calculations more robust.

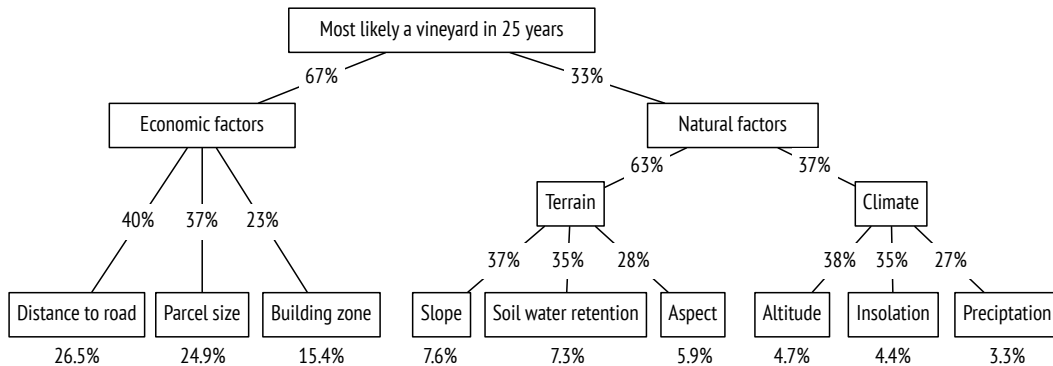


Figure 5: Criteria tree with intermediate and final weights. The lowest level of boxes shows the individual criteria, with the final weights written beneath. The numbers on the branches of the tree denote intermediate weights.

3.2 Criteria weights

Figure 5 shows the criteria resulting from the AHP process conducted with the 13 experts. The tree is annotated with intermediate weights on the branches and the final criteria weights underneath each criterion. The criteria are shown in the order of decreasing weight from left to right. “Distance to road” received the biggest weight, whereas “Precipitation” yielded the smallest.

The weights assigned by the 13 experts then were resampled via the bootstrapping method, in order to estimate the variation of each criterion weight. Figure 6 shows the comparison of the aggregated values from all 13 experts with the boxplots of value distributions resulting from 500 bootstraps. It becomes clear that the influence of the size of the production unit exhibits the largest variability.

3.3 Criteria value functions

Figure 7 shows the resulting value functions after aggregation. The value functions then are used to standardize the input criteria layers. Figure 8 displays the standardized criteria layers. Figure 7 further displays the standard deviations associated with each criterion value (i.e., vineyards on an altitude of 600ma.s.l. yield a value of 0.7 with an associated standard deviation of nearly 0.25 in respect to altitude). Vineyards that yield values close to 1.00 on all the criteria are very likely to still be cultivated in 25 years from the time of the study.

3.4 Spatially explicit results and associated uncertainty

Figure 9 shows the spatial representation of the MCE values. The higher the MCE value, the higher the likelihood that the area will remain cultivated in the future. The mean suitability is 0.795 (SD = 0.10), with a minimum of 0.27 and a maximum of 0.97.

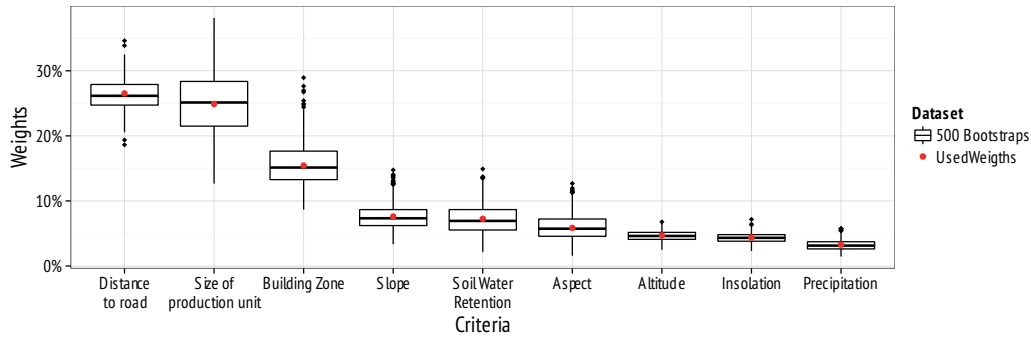


Figure 6: Criteria weights range from 500 bootstraps compared to the weights used. The red points represent the aggregation of all experts and the boxplots the variation over 500 bootstraps.

Figure 10 shows the value of the standard deviation (SD) and the relative SD in relation to the MCE outcome and the method of calculation. Each point in the graph corresponds to a pixel of the MCE. The relative SD equals the SD divided by its MCE value. Figure 11 shows the spatial representation of the relative SD. Each pixel in Figure 11 corresponds to a point in Figure 10. Higher values of the relative SD indicate higher uncertainty associated with the outcome. Points to the lower right of Figure 10 correspond to pixels with a high probability of continuing grape production with, at the same time, a low uncertainty attached to this forecast. By contrast, points to the upper left encompass a low likelihood of continuing cultivation, with more uncertainty associated to the prediction. In the case of the complete Monte Carlo simulation, smaller uncertainties indicate a greater level of agreement among the experts.

The mean of the relative SD of the complete Monte Carlo simulation (4.14%, SD = 1.17%) is slightly lower than the one for the analytical combination of the SD per criterion (6.58%, SD=0.77%), with the one from the “one-factor-at-a-time variation” being highest (9.97%, SD = 2.45%). The relative SD from the complete Monte Carlo simulation ranges from 1.9 to 20.6%, with the one based on the analytical combination of the SD ranging from 5.2 to 20.1%. Comparatively, the relative SD from the “one-factor-at-a-time variation” is highest, with a range of 5.7 to 41.2%.

4 Discussion

4.1 Involving a group of experts in a spatial MCE

We deem the proposed procedure for the aggregation of value functions successful. Firstly, it was easy to incorporate it into the questionnaire, by asking for four values only (the lower and higher bound of the acceptable range, and the lower and higher end of the optimal range). The experts were familiar with such boundary values. The proposed procedure even works in cases when only two of the four values are provided; i.e., in the case of the distance to the road. However, the method currently does not deal with risk-prone or

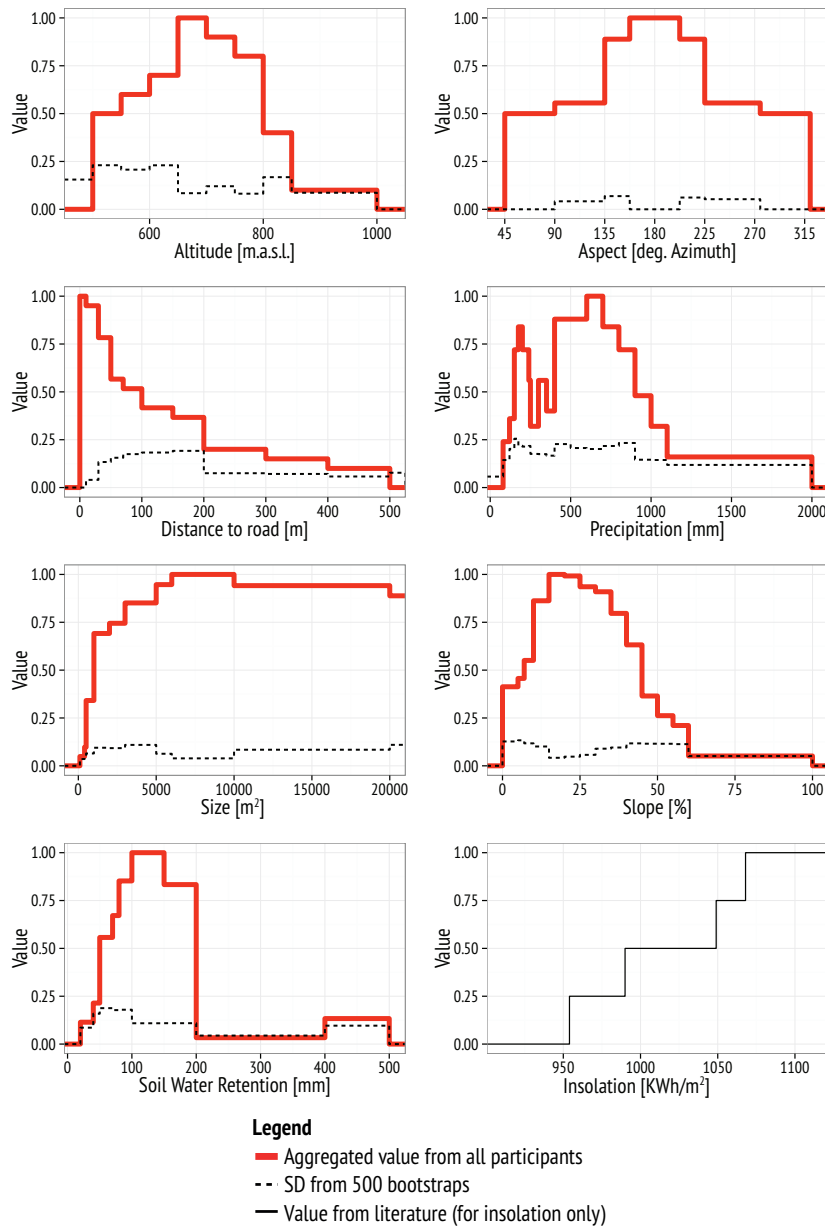


Figure 7: Value functions for 8 criteria with associated standard deviation resulting from 500 bootstraps. Please note, that the criterion “Building Zone” is dichotomous, and hence no value function is provided. Both, the aggregated value and the standard deviation are a function of the criteria input value. For the insolation criteria, literature based values were chosen. Higher values correspond to a higher probability or higher associated uncertainty of continued cultivation of a vineyard. For examples of how to read the value function graphs, see the associated text.

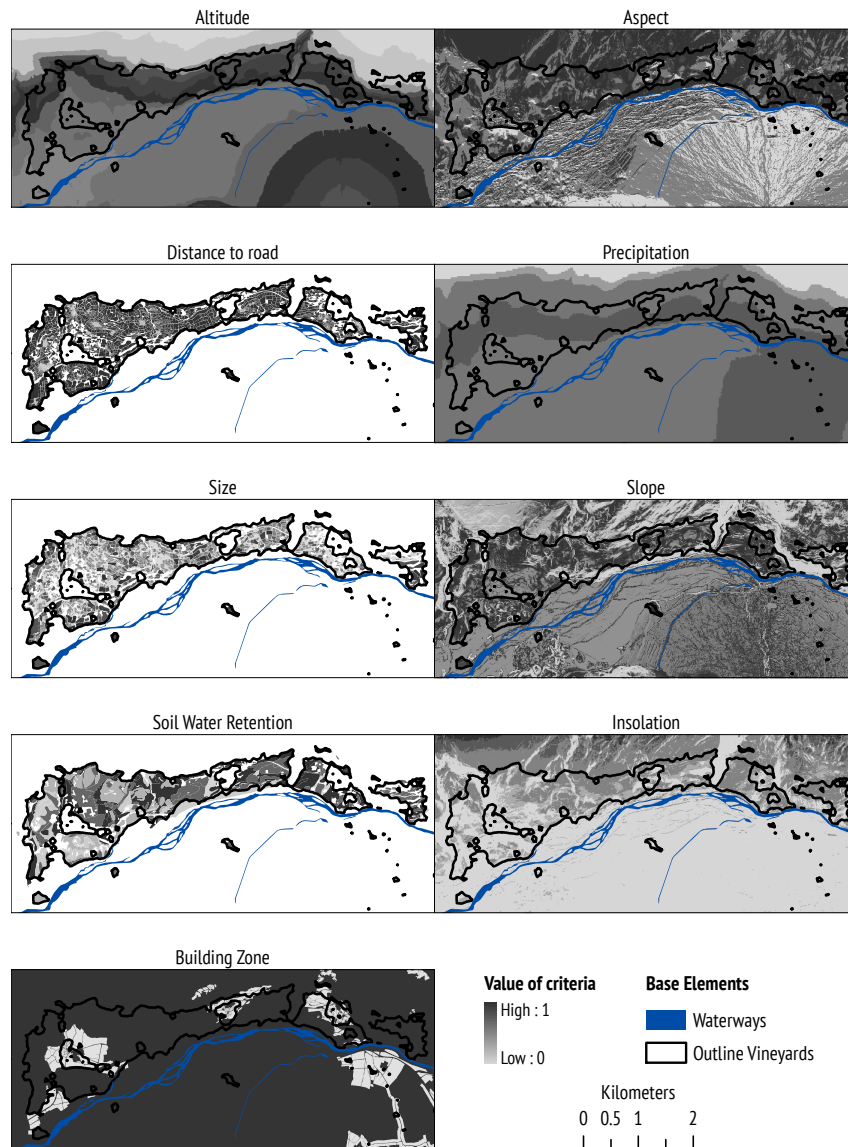


Figure 8: Criteria layer with standardized values. Spatially explicit representation of the value functions shown in Figure 7. Higher values correspond to a larger probability of continued cultivation in 25 years.

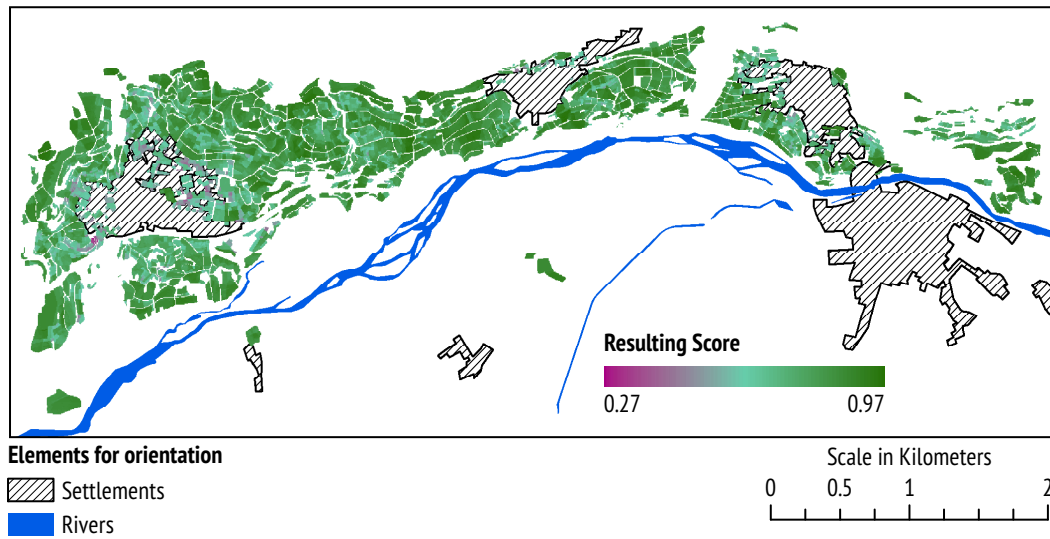


Figure 9: The map shows the results of the MCE, with 1.00 representing the highest probability of continuing grape production. There are few areas with low scores, such as close to the village on the left side of the map.

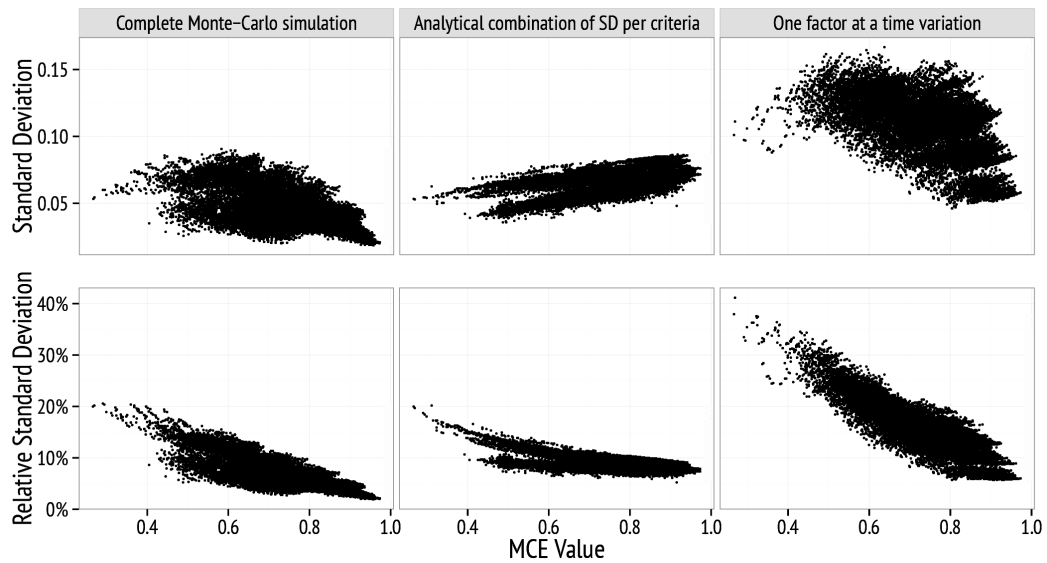


Figure 10: Comparing the standard deviation obtained from the complete Monte-Carlo simulation (left), the one calculated by analytical combination (centre), and the one from the “one-factor-at-a-time variation” to the value of the MCE (right).

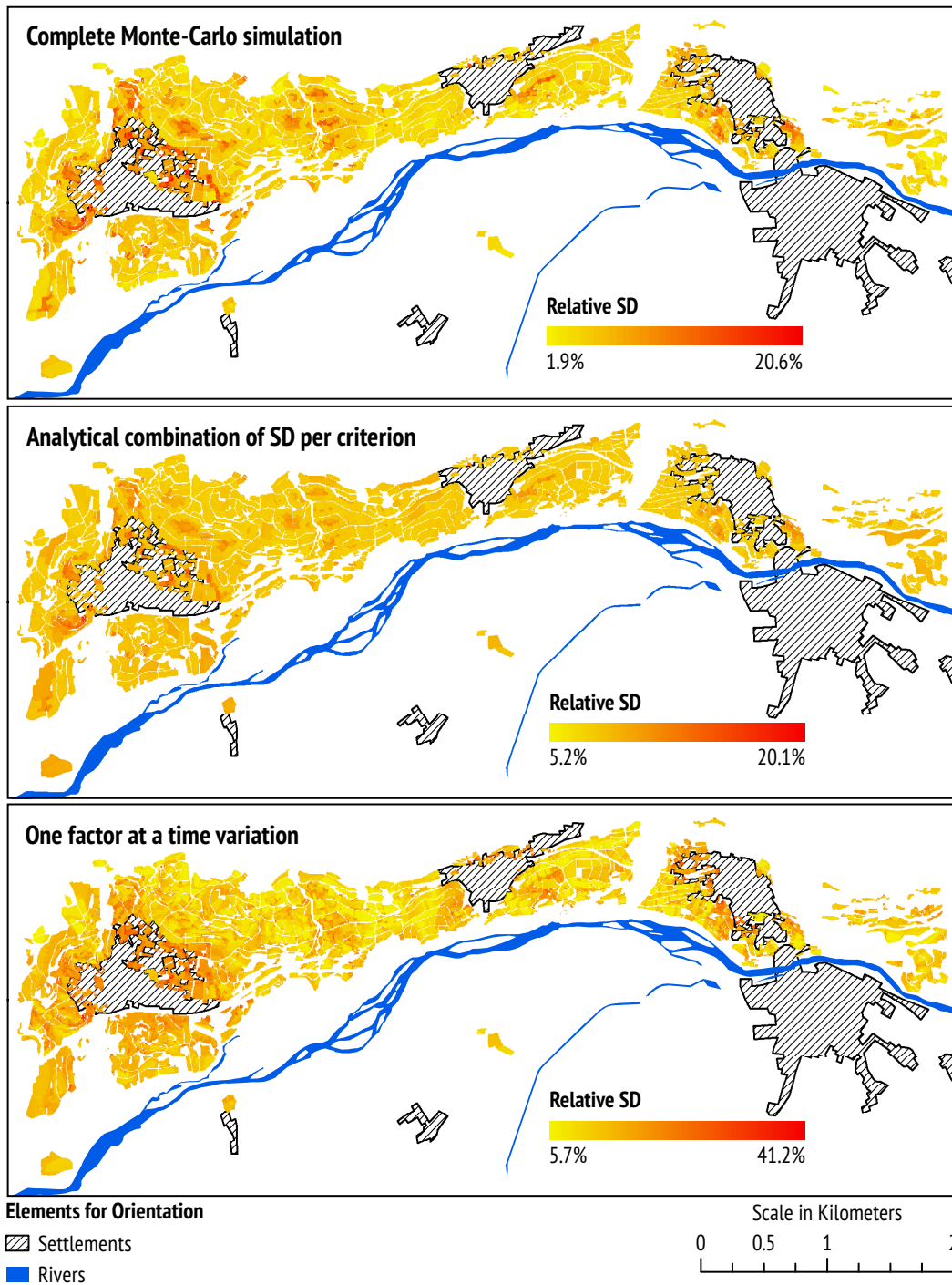


Figure 11: Spatial representation of the different methods for calculating the uncertainty.

aversive personality traits, as is included in the bi-section method [24]. However, it could be considered in the proposed procedure in a similar way as in [24].

The aggregation of the value functions among several experts was easily possible. Current spatial MCE studies aggregate the participants' value functions through discussions and iterations [35,38]. By using our methodology, we were able to elicit the value functions independently of each other and without interactions between the experts, such as, for example, in a delphi-approximation. Hence, this method overcomes the influence of dominant individuals and anchoring biases [43]. It further accounts for minority opinions and different optimal system configurations and therefore allows for alternative optimal configurations.

We assumed values within the acceptable range, but outside the optimal range, to yield a suitability of 0.5, which remains an assumption. As for the bi-section technique, the interpolation between the revealed values remains challenging. A possibility would be to generate continuously sloped curves, which, however, would require more complex re-classifying algorithms (and in practice is discretized also in fuzzy membership function evaluation).

Nevertheless, the criteria could be disentangled further in an effort to obtain monotonic functions, as recommended by Winterfeldt and Edwards [55]. The altitude criterion, for instance, could be deconstructed into the maximum altitude for sufficiently high temperatures (long enough growing season) and the minimum altitude for suitably low temperatures (not too early ripening). However, whilst this deconstruction may correspond to one expert's view, another one may perceive different underlying causes for optimal altitude. For example, the maximum altitude may as well depend more on the likelihood of serious frosts. Disentangling all the criteria for all possible views would likely render the procedure impracticable due to the thus required extended questionnaire, necessitating additional weighting and valuing. The additional complexity of such a procedure would further blur the comprehensibility and accessibility of the MCE model [13,34], which is considered an important factor for the trust in the outcomes [19] and further could cause a cognitive overload on the stakeholders [51] that are confronted with the outcome of a thus generated MCE. The MCE method proposed in this study therefore presents a trade-off between scientific credibility and practical suitability.

4.2 Validation of the value functions

In order to validate the plausibility of the elicited and aggregated value functions we compare them with comparable values found in the literature (Table 2). We compare our value functions in the range of 0.5 and higher ("acceptable" to "optimal" values) to the corresponding published value ranges.

Generally, the resulting values are well in line with values found in the literature, which suggests that the proposed method delivers plausible results. The method further allowed to quantify the relation between each criterion and the assigned values more precisely than in any of the given studies in the literature. The broader range of the value function for optimal altitude than the one found in the literature can be explained considering the high percentage of different grape specialities produced in the study area with associated particular and varying requirements. The bi-modal function for precipitation serves as an example of this method to consider alternative systems (with and without irrigation) within the same value functions. However, as an insufficient soil water retention capacity or precipitation

can be compensated with irrigation, exceedingly high soil water retention capacities cannot be compensated for. Hence, the value function for the soil water retention capacity shows lower optimal values than in the literature. To sum up, the criterion-by-criterion comparison with related studies reported in the literature strengthens our trust in the robustness of our proposed approach for aggregating value functions—“robust” meaning that stable results can be produced even with rather diverging individual opinions.

Criterion	Value functions of this study	Ranges given in the literature
Altitude	The elicited value function reaches ≥ 0.5 at 500–800m.a.s.l., which is well in line with the literature.	[21]: 400–800m is best [50]: 400–800m is best
Aspect	The elicited value function reaches ≥ 0.5 at 45–320°, which is broader than the range found in the literature.	[17]: 135–180° is best [21]: 135–224° is best
Distance to road	The value function clearly indicates parcels close to the road to have a higher value.	[41]: The closer the road, the better
Precipitation	The bi-modal value function reflects the different cultivation systems used in the study area, either with or without irrigation. The temporal distribution of rain over the year was not considered, as it does not differ within the study area.	[20]: Depends on the time of the year and the local conditions
Size	The value function shows a trade off between larger parcels and raising capital costs.	This effect was not discussed in the literature yet, to the best of our knowledge.
Slope	The elicited value function reaches ≥ 0.5 at 7–45%, which starts somewhat lower than reported values, but is very much within the range found in the literature.	[58]: 13–56% is best [17]: 18–33% is best [21]: 11–33% is best [50]: 22–56% is best
Soil Water Retention	The elicited value function reaches ≥ 0.5 at 50–200mm, which is close to ranges reported in the literature.	[58]: 75–200mm are good [21]: 100–300mm are good

Table 2: Comparison of the value functions of this study with values from the literature.

4.3 Uncertainty analysis: Recommendations

We found that covariances between different weighted criteria are high and therefore cannot be neglected. This renders the presented analytical approach of calculating uncertainty for the MCE invalid. The “one-factor-at-a-time variation” yields the highest SD, which, however, is spread more evenly over the study area. This does therefore indicate little about the spatial distribution of the uncertainty. The analytical approach highlights areas of high uncertainty more clearly, but the complete Monte Carlo identifies those areas best. Hence, we discourage the use of an analytical approach, as it neglects the covariances and does not equally well allow assessing the spatial distribution of uncertainty. We also discourage the use of the “one-factor-at-a-time variation” method, as it tends to overestimate the uncertainty and gives the least spatially differentiated picture of the distribution. Hence, we

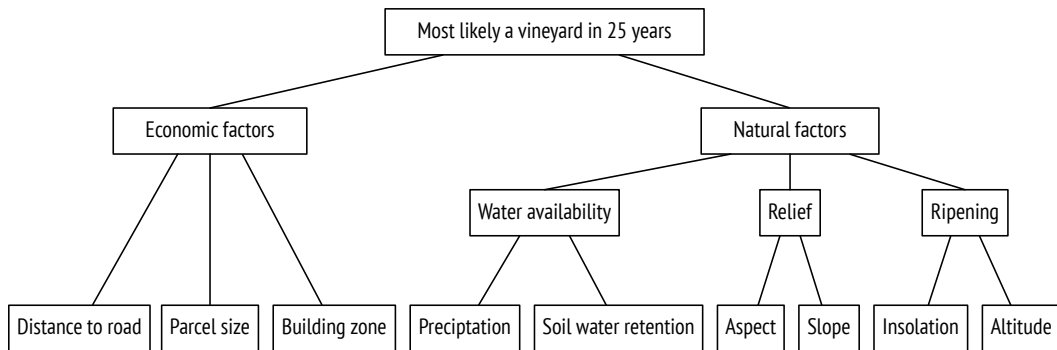


Figure 12: Alternative decision tree, not used in the case study.

consider the use of a complete Monte Carlo simulation more appropriate. Nevertheless, performing uncertainty assessment on a criterion-by-criterion basis (as “one-factor-at-a-time variation” or the analytical approach do) is useful, if spatially explicit uncertainty assessment per model input is sought [29].

Calculating relative standard deviations provides insights in areas that potentially have a high uncertainty associated with them. In our case, the areas of lower MCE value, i.e., the areas that are more likely not to be used as vineyards in the future, showed a higher relative standard deviation. This indicates that there is a greater degree of uncertainty in forecasting areas that likely will not be cultivated as a vineyard than areas that are likely to remain vineyards in the future. This insight was consistent among all three methods of uncertainty assessment.

4.4 Limitations and future work

The different experts might not only have perceived different weights, value ranges and a different selection of decisive factors within the MCE, but also might have structured them differently. Figure 12 provides an example of an alternative decision tree, compared to the one used in our MCE, displayed in Figure 5. The exact designs of the decision tree within the group process will always yield one particular representative amongst a set of valid alternatives. We hold no evidence that the decision tree used here did not represent well the experts’ perceptions, and hence assume it to be valid. However, we felt a need to mention the possibility of alternative decision trees, such as the one shown in Figure 12, to be studied in future research.

MCE are a comprehensible way of assessing the likelihood of land use change. They, however, fail to incorporate the influence of neighbouring parcels and the individual farmers’ decisions. Agent Based Models (ABM) are capable of representing individual farmers’ decisions, learning effects and feedbacks with surrounding regions [23]. In contrast, ABM require much more effort and involvement to be built [37] and are harder to evaluate—and also to comprehend by the end users—as they bear a greater complexity [30]. Other limitations are influences outside of the modelled system boundary, such as legal regulations,

and the overall development of the grape prices on the market. Neither, ABM or MCE would per se model that.

5 Conclusion

We have proposed a new method to elicit non-monotonic value functions in spatial MCEs that can be easily combined over several experts. Value functions standardize the criteria values, such as altitude, to a value score from 0 to 1. By asking for four data points—the lower and the higher end of both, the acceptable and the optimal range—this procedure is straightforward to implement and has at the same time proven to deliver robust and stable results. We therefore recommend using this procedure in studies requiring the standardization of values elicited from several experts.

We applied the proposed method to the case study of an MCE attempting to forecast potential land use change in vineyard cultivation within the next 25 years. According to our study only few vineyards will disappear. This is in line with the development experienced over the past decade of a decline of vineyards by about 4%. The validity of the elicited value functions was assessed through a comparison to the literature, with which we found a high degree of congruency. The validity of the MCE-outcome is presented in [42].

We assessed the uncertainty of the MCE results by three different methods: (a) a one-factor-at-a-time variation, (b) bootstrapping of the 13 input criteria layers with subsequent analytical error propagation, and (c) a complete Monte Carlo simulation with the bootstrapped inputs. We were able to show that the simplified analytical and the “one-factor-at-a-time variation” approaches fail to accurately reflect the MCE’s uncertainty, with the complete Monte Carlo simulation yielding the most insights. However, all three methods deliver insights, as they indicate a prediction non-continuing wine cultivation to have a higher uncertainty than a prediction of a continuing wine cultivation.

Acknowledgments

We are grateful to Dr. Curdin Derungs (University of Zurich) for his useful discussion concerning the value functions. We would like to further thank all the wine-experts and the wine-growers participating in the research and the administration of the nature park of Pfyn-Finges in shaping the research topic. This work was funded by the University of Zurich, with a supporting grant from the Dr. Joachim de Giacomo Foundation.

References

- [1] BEINAT, E. *Value functions for environmental management*. Environment & management. Kluwer Academic Publishers, Dordrecht, 1997.
- [2] BRANS, J.-P., AND MARESCHAL, B. PROMETHEE Methods. In *Multiple criteria decision analysis: state of the art surveys*, J. Figueira, S. Greco, and M. Ehrgott, Eds. Springer, 2005, ch. 5, pp. 163–196.
- [3] CARRUZZO-FREY, S., AND DUBUIS, P., Eds. *Rebe und Wein im Wallis: die Geschichte von den Anfängen bis heute*. Walliser Reb- und Weinmuseum, Sierre-Salgesch, 2010.



- [4] CARVER, S. Integrating multi-criteria evaluation with geographical information systems. *International journal of geographical information systems* 5, 3 (1991), 321–339. 10.1080/02693799108927858.
- [5] CHEN, Y., KHAN, S., AND PAYDAR, Z. To retire or expand? A fuzzy GIS-based spatial multi-criteria evaluation framework for irrigated agriculture. *Irrigation and Drainage* 59 (2010), 174–188. 10.1002/ird.470.
- [6] CHERNICK, M. R. *Bootstrap Methods: A Guide for Practitioners and Researchers*, 2 ed. Wiley, 2007.
- [7] COMBER, A. J. Geographically weighted methods for estimating local surfaces of overall, user and producer accuracies. *Remote Sensing Letters* 4, 4 (2013), 373–380. 10.1080/2150704X.2012.736694.
- [8] DUJMOVIC, J., DE TRE, G., AND DRAGICEVIC, S. Comparison of Multicriteria Methods for Land-use Suitability Assessment. In *Proc. of the Joint 2009 International Fuzzy Systems Association World Congress and 2009 European Society of Fuzzy Logic and Technology Conference (2009)*, IFSA-EUSFLAT, pp. 1404–1409.
- [9] EASTMAN, J. R., JIANG, H., AND TOLEDANO, J. Multi-criteria and multi-objective decision making for land allocation using GIS. In *Multicriteria Analysis for Land-Use Management*, E. Beinat and P. Nijkamp, Eds., Environment & Management. Springer Netherlands, 1998, ch. 9, pp. 227–251. 10.1007/978-94-015-9058-7_13.
- [10] EMERY, S. Zukunftsaussichten für die Weinberge auf Terrassen und an Steillagen im Kanton Wallis. Tech. Rep. September, Walliser Landwirtschaftskammer, Conthey, 2001.
- [11] FEIZIZADEH, B., SHADMAN ROODPOSHTI, M., JANKOWSKI, P., AND BLASCHKE, T. A GIS-based extended fuzzy multi-criteria evaluation for landslide susceptibility mapping. *Computers & Geosciences* 73 (2014), 208–221. 10.1016/j.cageo.2014.08.001.
- [12] FRANEK, J., AND KRESTA, A. Judgment Scales and Consistency Measure in AHP. *Procedia Economics and Finance* 12, March (2014), 164–173. 10.1016/S2212-5671(14)00332-3.
- [13] GOLDSTONE, R. L., AND JANSSEN, M. A. Computational models of collective behavior. *Trends in Cognitive Sciences* 9, 9 (2005), 424–430. 10.1016/j.tics.2005.07.009.
- [14] GÓMEZ-DELGADO, M., AND TARANTOLA, S. GLOBAL sensitivity analysis, GIS and multi-criteria evaluation for a sustainable planning of a hazardous waste disposal site in Spain. *International Journal of Geographical Information Science* 20, 4 (2006), 449–466. 10.1080/13658810600607709.
- [15] GOOD, P. *Resampling Methods - A Practical Guide to Data Analysis*, 3 ed. Birkhäuser, Boston, Basel, Berlin, 2005.
- [16] HEPNER, G. F. Use of Value Functions As a Possible Suitability Scaling Procedure in Automated Composite Mapping. *The Professional Geographer* 36, 4 (1984), 468–472. 10.1111/j.0033-0124.1984.00468.x.

- [17] IRIMIA, L., AND PATRICHE, C. Evaluating the ecological suitability of the vineyards, by using Geographic Information Systems (GIS). *Cercetări Agronomice în Moldova XLIII*, 1 (2010).
- [18] ISHIZAKA, A., AND LABIB, A. Review of the main developments in the analytic hierarchy process. *Expert Systems with Applications* 38, 11 (2011), 14336–14345. 10.1016/j.eswa.2011.04.143.
- [19] JANKOWSKI, P. Towards Participatory Geographic Information Systems for community-based environmental decision making. *Journal of environmental management* 90, 6 (2009), 1966–71. 10.1016/j.jenvman.2007.08.028.
- [20] JONES, G. V., REID, R., AND VILKS, A. Climate, grapes, and wine: Structure and suitability in a variable and changing climate. In *The Geography of Wine: Regions, Terroir and Techniques*, P. Dougherty, Ed., vol. 9789400704. Springer, 2012, ch. 7, pp. 109–133. 10.1007/978-94-007-0464-0-7.
- [21] JONES, G. V., SNEAD, N., AND NELSON, P. Geology and wine 8. Modeling viticultural landscapes: A GIS Analysis of the Terroir Potential in the Umpqua Valley of Oregon. *Geoscience Canada* 31, 4 (2004), 167–178.
- [22] KALELKAR, A. S., AND BROOKS, R. E. Use of multidimensional utility functions in hazardous shipment decisions. *Accident Analysis and Prevention* 10, 3 (1978), 251–265. 10.1016/0001-4575(78)90016-7.
- [23] KAYE-BLAKE, W., LI, F., AND MARTIN, A. Multi-agent Simulation Models in Agriculture: A Review of Their Construction and Uses. Tech. Rep. 318, Agribusiness and Economics Research Unit, Lincoln University, 2010.
- [24] KEENEY, R. L. *Value-Focused Thinking. A Path to Creative Decisionmaking*. Harvard University School Press, Cambridge, 1992.
- [25] KEENEY, R. L., AND RAIFFA, H. *Decisions with Multiple Objectives: Preferences and Value Trade-Offs*. Cambridge University Press, Cambridge, 1993.
- [26] KODER, W. Raron kämpft um seine Rebberge, 2014.
- [27] KOWALSKI, K., STAGL, S., MADLENER, R., AND OMANN, I. Sustainable energy futures: Methodological challenges in combining scenarios and participatory multicriteria analysis. *European Journal of Operational Research* 197, 3 (2009), 1063–1074. 10.1016/j.ejor.2007.12.049.
- [28] LEE, P. H., AND YU, P. L. An R package for analyzing and modeling ranking data. *BMC medical research methodology* 13, 1 (2013). 10.1186/1471-2288-13-65.
- [29] LIGMANN-ZIELINSKA, A., AND JANKOWSKI, P. Spatially-explicit integrated uncertainty and sensitivity analysis of criteria weights in multicriteria land suitability evaluation. *Environmental Modelling & Software* 57 (2014), 235–247. 10.1016/j.envsoft.2014.03.007.



- [30] LIGTENBERG, A., VAN LAMMEREN, R. J., BREGT, A. K., AND BEULENS, A. J. Validation of an agent-based model for spatial planning: A role-playing approach. *Computers, Environment and Urban Systems* 34, 5 (2010), 424–434. 10.1016/j.compenvurbsys.2010.04.005.
- [31] MALCZEWSKI, J. *GIS and Multicriteria Decision Analysis*. John Wiley & Sons Inc., 1999.
- [32] MALCZEWSKI, J. GIS-based multicriteria decision analysis: a survey of the literature. *International Journal of Geographical Information Science* 20 (2006), 703–726. 10.1080/13658810600661508.
- [33] MALCZEWSKI, J., AND RINNER, C. *Multicriteria Decision Analysis in Geographic Information*. Springer, 2015.
- [34] MENDOZA, G., AND MARTINS, H. Multi-criteria decision analysis in natural resource management: A critical review of methods and new modelling paradigms. *Forest Ecology and Management* 230, 1-3 (2006), 1–22. 10.1016/j.foreco.2006.03.023.
- [35] MORGAN, R. K. *Environmental Impact Assessment: A Methodological Approach*. Springer Science & Business Media, 1998.
- [36] MOSADEGHI, R., WARNKEN, J., TOMLINSON, R., AND MIRFENDERESK, H. Uncertainty analysis in the application of multi-criteria decision-making methods in Australian strategic environmental decisions. *Journal of Environmental Planning and Management* 56, 8 (2013), 1097–1124. 10.1080/09640568.2012.717886.
- [37] NEWIG, J., GAUBE, V., BERKHOFF, K., KALDRACK, K., KASTENS, B., LUTZ, J., SCHLUSSMEIER, B., ADENSAM, H., AND HABERL, H. The role of formalisation, participation and context in the success of public involvement mechanisms in resource management. *Systemic Practice and Action Research* 21, 6 (2008), 423–441. 10.1007/s11213-008-9113-9.
- [38] PASSUELLO, A., SCHUHMACHER, M., MARI, M., CADIACH, O., AND NADAL, M. A Spatial Multicriteria Decision Analysis to Manage Sewage Sludge Application on Agricultural Soils. In *Environmental Modeling for Sustainable Regional Development*, V. Olej, I. Obršálová, and J. Krupka, Eds. IGI Global, 2011, ch. 11, pp. 221–241. 10.4018/978-1-60960-156-0.
- [39] PAWLAK, Z. Rough Sets. *International Journal of Computer and Information Science* 11, 5 (1982), 341–356. 10.1109/TITB.2009.2017017.
- [40] PONTIUS, R. G., BOERSMA, W., CASTELLA, J.-C., CLARKE, K., DE NIJS, T., DIETZEL, C., DUAN, Z., FOTSING, E., GOLDSTEIN, N., KOK, K., KOOMEN, E., LIPPITT, C. D., MCCONNELL, W., MOHD SOOD, A., PIJANOWSKI, B., PITHADIA, S., SWEENEY, S., TRUNG, T. N., VELDKAMP, A. T., AND VERBURG, P. H. Comparing the input, output, and validation maps for several models of land change. *The Annals of Regional Science* 42, 1 (2008), 11–37. 10.1007/s00168-007-0138-2.
- [41] RICCIOLI, F., EL ASMAR, T., EL ASMAR, J. P., AND FRATINI, R. Use of cellular automata in the study of variables involved in land use changes: An application in the wine production sector. *Environmental Monitoring and Assessment* 185, 7 (2013), 5361–5374. 10.1007/s10661-012-2951-z.

- [42] ROHRBACH, B., LAUBE, P., AND WEIBEL, R. Comparing multi-criteria evaluation and participatory mapping to projecting land use. *Landscape and Urban Planning* 176 (2018), 38–50. 10.1016/j.landurbplan.2018.04.002.
- [43] ROWE, G., WRIGHT, G., AND BOLGER, F. Delphi - A Reevaluation of Research and Theory. *Technological Forecasting and Social Change* 39 (1991), 235–251.
- [44] RYKIEL, E. J. Testing ecological models: the meaning of validation. *Ecological modelling*, 90 (1996), 229–244.
- [45] SAATY, T. L. *Decision Making for Leaders: The Analytic Hierarchy Process for Decisions in a Complex World*, 3 ed. RWS Publications, Pittsburgh, 1995.
- [46] SALO, A. A., AND HÄMÄLÄINEN, R. P. On the measurement of preferences in the analytic hierarchy process. *Journal of Multi-Criteria Decision Analysis* 6, 6 (1997), 309–319.
- [47] SCHNEIDER, L. C., AND PONTIUS, R. G. Modeling land-use change in the Ipswich watershed, Massachusetts, USA. *Agriculture, Ecosystems and Environment* 85 (2001), 83–94. 10.1016/S0167-8809(01)00189-X.
- [48] SIRAJ, S., MIKHAILOV, L., AND KEANE, J. A. Contribution of individual judgments toward inconsistency in pairwise comparisons. *European Journal of Operational Research* 242, 2 (2015), 557–567. 10.1016/j.ejor.2014.10.024.
- [49] SOHL, T. L., AND CLAGGETT, P. R. Clarity versus complexity: Land-use modeling as a practical tool for decision-makers. *Journal of Environmental Management* 129 (2013), 235–243. 10.1016/j.jenvman.2013.07.027.
- [50] STANCHI, S., GODONE, D., BELMONTE, S., FREPPAZ, M., GALLIANI, C., AND ZANINI, E. Land suitability map for mountain viticulture: A case study in Aosta Valley (NW Italy). *Journal of Maps* 9, 3 (2013), 367–372. 10.1080/17445647.2013.785986.
- [51] STAUFFACHER, M., FLÜELER, T., KRÜTLI, P., AND SCHOLZ, R. W. Analytic and Dynamic Approach to Collaboration: A Transdisciplinary Case Study on Sustainable Landscape Development in a Swiss Prealpine Region. *Systemic Practice and Action Research* 21, 6 (2008), 409–422. 10.1007/s11213-008-9107-7.
- [52] SWISS FEDERAL STATISTICAL OFFICE. *Landwirtschaftliche Betriebsstrukturerhebung*, 2014.
- [53] TONIETTO, J., AND CARBONNEAU, A. A multicriteria climatic classification system for grape-growing regions worldwide. *Agricultural and Forest Meteorology* 124 (2004), 81–97. 10.1016/j.agrformet.2003.06.001.
- [54] VELDKAMP, A., AND LAMBIN, E. Predicting land-use change. *Agriculture, Ecosystems & Environment* 85, 1-3 (2001), 1–6. 10.1016/S0167-8809(01)00199-2.
- [55] VON WINTERFELDT, D., AND EDWARDS, W. *Decision analysis and behavioral research*, reprint ed. Cambridge University Press, Cambridge, 1986.
- [56] VOOGD, H. *Multicriteria evaluation for urban and regional planning*. PhD thesis, Technical University Eindhoven, 1983.

- [57] YAGER, R. On ordered weighted averaging aggregation operators in multi criteria decision making. *IEEE Trans. Syst. Man Cybern.* 18, 1 (1988), 183–190. 10.1109/21.87068.
- [58] YAU, I.-H., DAVENPORT, J. R., AND MOYER, M. M. Developing a Wine Grape Site Evaluation Decision Support System for the Inland Pacific Northwestern United States. *HortTechnology* 24, 1 (2014), 88–98.
- [59] ZIMMERMANN, N. E., AND KIENAST, F. Predictive mapping of alpine grasslands in Switzerland: Species versus community approach. *Journal of Vegetation Science* 10 (1999), 469–482.