

The University of Maine

DigitalCommons@UMaine

University of Maine Alumni Magazines

University of Maine Publications

11-1927

Maine Alumnus, Volume 9, Number 3, November 1927

General Alumni Association, University of Maine

Follow this and additional works at: https://digitalcommons.library.umaine.edu/alumni_magazines

Recommended Citation

General Alumni Association, University of Maine, "Maine Alumnus, Volume 9, Number 3, November 1927" (1927). *University of Maine Alumni Magazines*. 91.

https://digitalcommons.library.umaine.edu/alumni_magazines/91

This publication is brought to you for free and open access by DigitalCommons@UMaine. It has been accepted for inclusion in University of Maine Alumni Magazines by an authorized administrator of DigitalCommons@UMaine. For more information, please contact um.library.spc@maine.edu.

MR. EDW. H. KELLEY
PURCHASING AGENT
UNIV. OF ME.
ORONO, ME.

The Maine Alumnus

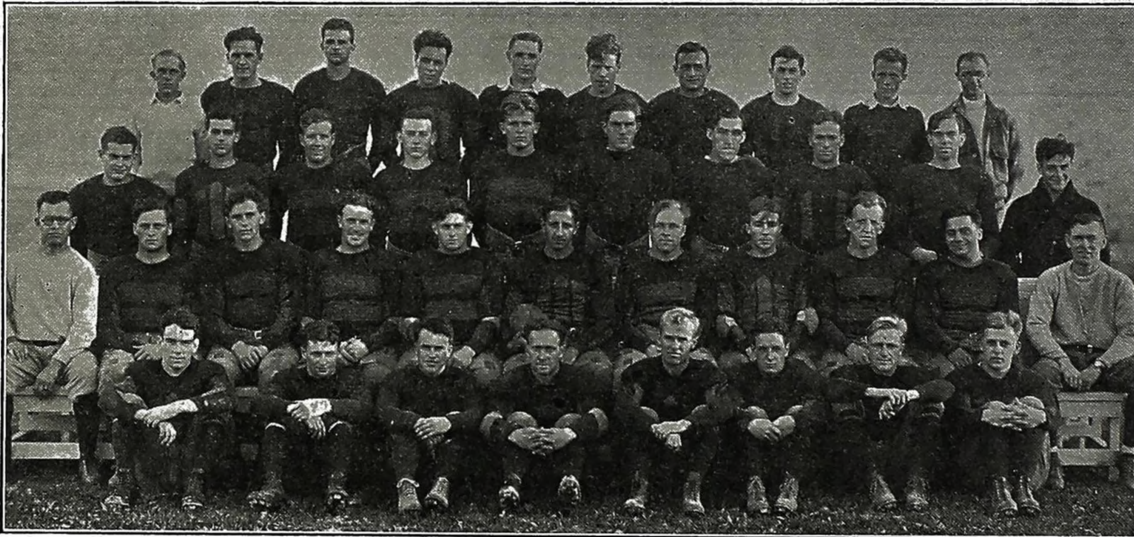
Member of the Alumni Magazines Associated

VOL. 9, NO. 3

NOVEMBER, 1927

TWENTY CENTS

New England Conference Champions



Maine Varsity Football Team

UNIVERSITY STORE COMPANY

ORGANIZED in 1911 and conducted for the past fifteen years in the interest of the Athletic Association, contributing yearly from its profits to the support of athletics.

Taking many mail orders from the Alumni for books and supplies; making special reunion banners.

May we be of service to you?

BOARD OF DIRECTORS

BENJAMIN C. KENT, '12

ROBERT P. CLARK, '15

LAMERT S. CORBETT

JAMES A. GANNETT, '08

FRED H. THOMPSON, '28

Store Manager, F. L. MANWARING

Store Treasurer, IRVING PIERCE

Books, Student Supplies
Tobacco, Sodas, Luncheons
Confectionery

OLD TOWN TRUST COMPANY

Savings Department
Checking Accounts

High Grade Bonds
Bought and Sold

OLD TOWN TRUST COMPANY

ORONO, MAINE

NONE BETTER



Made by

MAINE MEN

Blake, Barrows & Brown

Inc.
President, HARRY M. SMITH, '93
INSURANCE—INVESTMENTS
BANGOR, MAINE
Established 1864 Incorporated 1820

UNIVERSITY OF MAINE

*The State University
Maintained by the
State and General
Government*

College of Arts and Sciences
College of Agriculture
College of Technology
Maine Agricultural Experiment Station
Graduate Courses

leading to the Masters' degree are offered by the various colleges.

Summer Term of six weeks (graduate and undergraduate credit).

For catalogue and circulars, address

THE REGISTRAR

Orono, Maine

The Maine Alumnus

Vol. 9, No. 3

November, 1927

The Maine Alumnus

Published monthly by the General Alumni Association of the University of Maine during October, November, December, February, March, April, May and June.

Subscription, \$1 per year. Single copies, 20 cents.

R. P. CLARK, '15
Managing Editor

BERNICE FORTIN
Personal Editor

Editorial and business office, Orono, Me.
Office of Publication, University Press,
University of Maine, Orono, Me.

Editorial



BOWDOIN GAME TICKET SERVICE

Some were glad, some were sad and some were mad when they received their Bowdoin-Maine game tickets this year. We congratulate those who drew seats that made them happy; we regret that many were dissatisfied and those who got mad certainly have our sympathy. Perhaps we were all a little mad in those hectic days preceding this big game.

We hope, however, there will be no permanent dissatisfaction on anybody's part over their seats. We want briefly to explain the situation and feel sure that the facts will, when known, reconcile all to the great truth that ticket orders were filled in the order received and as impartially as possible.

The athletic board allotted 1000 grandstand seats to the alumni office to be used in filling alumni orders for tickets. Every alumnus was mailed on October 15th blanks to use in applying for tickets. Hundreds used these at once. They were made glad; many waited a few days,

they were later sad. Many waited almost until the last minute and they naturally drew bleacher seats or worse. And if our telephone ever rings again it will ring too soon for it certainly got two weeks of hectic use.

Here's how—The orders were filled on Oct. 21st, on which date the tickets were delivered to the alumni office. And here is a fact or two: The 1000 tickets were used up while there were still fifty orders, for approximately 200 tickets, left unfilled. We bought tickets to fill these orders from The University Store and from Dillingham's in Bangor. We smiled.

Every mail brought more orders and the telephone bell rang day and night continuously—almost. We kept buying tickets, bleacher tickets now and the demand never let up until the game was well under way.

Cold figures best tell the story. The alumni office sold 1264 grandstand tickets and 546 bleachers; in all about twice as many as in any previous year. We tried to please you all but that 50 yard line gave out early.

THE MAINE NIGHT PROGRAM

Four years close contact with the working out of Maine Night programs has convinced your alumni secretary that there are almost as many different opinions on what sort of program is most desired and appreciated on Maine Night as there are individual alumni.

Every year when it is all over one alumnus will tell us "That was a great Maine Night." Another will frankly give his opinion something like this: "What's wrong? This has been a rotten Maine Night program."

What one wants and likes another does not. We want to conform to

the ideas of the big majority but what are they? To help next year's committee plan the right program will you not write us your ideas on Maine Night? Speak frankly. What should Maine Night be? Write "Bob" Clark, alumni secretary.

MEMORIAL FUND PAYMENTS

On June 1st, 1928—next June—the final payments on Memorial Fund subscriptions fall due. If Maine alumni individually and collectively keep the faith we can wind up the campaign in a blaze of glory and start construction right away of the gymnasium section which Maine needs so badly.

If, on the other hand, individually and collectively we are behind on our payments next June we will cause construction to be delayed and will make a dark mark against the loyalty and interest of Maine alumni.

We would urge all concerned to give this matter serious thought. Bring your payments up to date as soon as possible and anyway send in some money—as much as you can—and thereby decrease the balance you owe and help speed the new construction. Say it with dollars!

RETRACTION AND EXPLANATION

Under the heading "Chemist Wanted" we printed a letter from the Heywood-Wakefield Company stating that they needed "a protestant graduate in chemistry." We printed this letter without noticing the religious discrimination therein. *The Maine Alumnus* and the General Alumni Association are strictly non-sectarian, as is the University of Maine. We certainly regret this carelessness.

MAINE 13, NEW HAMPSHIRE 6

Maine annexed the New England Conference title by defeating New Hampshire 13 to 6 at Orono on November 12 in a muddy game of old fashioned football witnessed by a handful of spectators due to the unfavorable weather conditions. Maine outplayed New Hampshire in every part of the game except punting. The excellent punts of Reynolds of from 50 to 60 yards prevented Maine from rolling up a large score.

Maine made 17 first downs and N. H. 1. Maine rushed the ball 261 yards, gained 19 by forwards, lost 22, penalized 34 and completed two passes while New Hampshire made 42 yards by rushing, nine on 1 forward that was completed, lost 27 and was penalized 10. In the first half Maine made 197 yards and New Hampshire made 3 and lost two making their total "gain" a minus 17 yards.

The field was in terrible condition because of the snow of Friday and Maine could not break loose with her bewildering air attack nor could she use the shifty attack of the backs.

Maine's touchdowns came in the second period and were results of direct marches which were uninterrupted from mid field. The Maine backs shared alike in rushing the ball as all broke through for long gains. New Hampshire scored her touchdown after an exchange of punts and a 15 yard penalty had put Maine far back in her own territory. Peakes punted out to the 25 yard line but New Hampshire made her only first down in the next play when Shea tore through guard for 15 yards. A pass Silva to Clark scored the touchdown.

MAINE 13	6	NEW HAMPSHIRE
Nanigian, le	...	re, Roy
Minuitti, Bishop, It	...	rt, Walls, Redden
Beeaker, Vail, lg	...	rg, Bianchi, Wettergreen
Zakarian, Harkins, c	...	c, Wettergreen, O'Leary
Hartman, Norton, rg	...	lg, Farrell
Lynch, Gray, rt	...	lt, Farland, McLaren
Black, Donovan, re	...	le, Kelsea
Osgood, Abbott, qb	...	qb, Reynolds, Silva
Peakes, Young, lhb	...	rhb, Gaunt, Clark
Buzzell, Moran, rhb	...	lhb, Shea, Rogers
Coltart, Airoidi, fb	...	fb, Regali
Maine	0	13 0 0
New Hampshire	0	0 6 0

Touchdowns, Coltart 2, Clark. Point after touchdown Coltart (placement). Umpire, Lowe, Dartmouth, Referee, Cannell, Tufts, Head linesman, Nelson, Springfield. Field judge, Vinall, Springfield.
Time, four 15 minute periods.

1928 FOOTBALL SCHEDULE

- Sept. 26 Rhode Island at Orono
- Oct. 6 Yale at New Haven
- Oct. 13 Connecticut Aggies at Orono
- Oct. 20 New Hampshire at Durham
- Oct. 27 Bates at Orono
- Nov. 3 Colby at Orono
- Nov. 10 Bowdoin at Brunswick

NEW ENGLAND CROSS COUNTRY CHAMPIONSHIP WON BY MAINE

With a scant inch separating them, Harry Richardson and Frank Lindsay, Frank Kanaly's star University of Maine sophomore harriers romped home in first and second places at Franklin Park, Monday afternoon to lead the Pale Blue cross country team to an easy victory in the fifteenth annual cross country run. Victor McNaughton who had tied the two leaders in the Maine State and New Hampshire meetings was but a few feet behind while Captain Bud Cushing who had been in fourth place weakening fast but fighting gamely was tied for 11th with Al Benson also of Maine. The last two mentioned were the final Maine men to count in the scoring. Maine had 29 points while M.I.T. in second place had 69.

From the start it was apparent that Maine would be the team to beat, for the Blue harriers took the lead and were never headed. At the two mile post Lindsay and Richardson were well ahead, with McNaughton and Cushing in third and fourth places and Benson twelfth. On the hill at the three mile mark McClintock of Tech passed Cushing, but looked tired and was never in any danger of overtaking the three Maine leaders, who were far ahead of the field practically all the way. McClintock finished fourth, with Wardwell of Bates fifth, Bates was the only other Maine College entered in the meet. The Lewiston boys, winners two years ago, finished in seventh place, with 186 points, Wardwell being the only Garnet wearer to finish in the group of leaders. Burke finished 24th, Chesley 45th with C. Cushing and Buddington coming in 55th and 56th to complete the scoring. New Hampshire, winner last year and picked by many to repeat, proved a disappointment, finishing third with 110. Hobbs was seventh, Eastman 20th, Corpening 21st, Burke 25th, and Weeks 37th.

Rising from a sick bed to make the Boston trip, Lindsay of Maine failed to show the effects of a severe attack of grip, and ran the race of his career. Only a few yards separated the first four men over the greater part of the course, the Maine individual wins coming on top of "Grunt" Taylor's victory last year and Richardson's triumph in the 1926 Freshman meet, put Maine in the front rank in New England as the developer of cross country stars.

The point summary:
Maine 29 points, M. I. T. 69, New Hampshire 110, Rhode Island 114, Wesleyan 150, Bates 186, Brown 190, B. U. 211, Tufts 238, Mass. Aggies 242, Rich-

ardson and Lindsay tie for first. McNaughton third, Cushing and Benson tie for 11th. Freshman meet won by New Hampshire, five men finishing ahead of the field. New Hampshire 39, M. I. T. 113, Bates 144, Maine 167, M. A. C. 220.

GIRLS' HOCKEY TEAM VICTORIOUS

Playing at Medford on Armistice Day, the University of Maine girls' hockey team defeated the fast Jackson College team 6-2. With this victory Maine completed a season in which she has been undefeated, and in which only one team has scored on her, Jackson College. Maine defeated Wilton Academy 5-0, and the Connecticut "Aggies" 8-0.

After the game, the team attended a tea given by the Jackson girls, and made a hasty tour of the campus. Everyone went to a musical comedy Friday evening, and, under the chaperonage of Miss Helen Lengyel, the coach, stayed overnight at the Parker House. Saturday morning was the occasion for a shopping spree, with another show in the afternoon. They left Boston Saturday night on the pullman, and arrived on campus Sunday morning in time for breakfast.

The following girls made the trip: Captain Bobby White, Francis Fuller, Virginia Smith, Mary Robinson, Alice Webster, Mary Mahoney, Arline Robbins, Beulah Kneeland, Caroline Collins, Sadie Thompson, Dorothy Ross, Ellen Mullaney, Elizabeth Murphy, Sylvia Gould, Rachel Matthews, Rebecca Matthews, Eunice Barrows, Thelma Shea.

STUDENT EMPLOYMENT

In an attempt to be of mutual aid, both to the students of the University of Maine and also to the people of Bangor, Old Town, and Orono, the Employment Bureau of the University is sending out this letter.

There are one hundred and fifty men and women students registered with the Bureau for work of various kinds. Some of them are willing and anxious to do any kind of work possible—, for in the case of many, their college education depends on money earned now. Some have had experience and want jobs along their line. In fact, anything whether it be an odd job, or part time work, or a regular position, a student can fill it.

Here are the types of work in which they have had experience:

- Chores, Carpentry, Chemical Lab. Assisting, Electrical Work, Furnace Work, Library Assistant, Office Work, Newspaper Reporting, Stenography, Student Agents, Tree Surgery, Typewriting, Care

of children, Chauffering, Clock Repairing, Farm Work, Housekeeping, Musicians, Painting, Snow Shovelling, Store work, grocery, clothing, boots & shoes, Telegraph Operating, Trucking.

If you are in need of student help please write or phone the University office (Telephone 109). Applications for student help should be made at least one day in advance of the time the work is to be done.

MAINE, AIDED BY HUGE "ATHLETIC FACTORY" BUILDS STRONG TEAM

By Austen Lake

In *Boston Transcript* of Oct. 21, 1927

"If you have never seen the University of Maine's new memorial gymnasium, you have never seen the latest in sport factories. Your correspondent had his first view of it late yesterday afternoon, arriving in Orono just before dusk. On enquiring as to the whereabouts of Coach Fred Brice and the university football practice, he was directed toward what, from a distance, appeared to be a dirigible airship hangar, but which on closer inspection proved to be the most up-to-date athletic plant he had ever seen.

"Inside Fred Brice and his varsity squad of thirty-six players were holding punting practice under a huge net that hangs from the roof girders and encloses some sixty square yards of the floor area. The other half of the gym, including the cinder path which hugs the inside edge of the entire building, was given over to the annual pumpkin track meet—the fall interclass event. And there was still enough room for several additional athletic side shows. The writer for a while watched the Maine backfield men sending up all punts that usually had plenty of ceiling clearance, and then ventured inside the net to greet Brice. Particulars on the gym were requested, but Brice, unfortunately, didn't have them all at his finger tips. "It's the largest athletic building of its kind in the country"—he explained generally, "broader, longer and higher by some feet than the Yost building at Michigan."

He pointed to the net, which enclosed the dirt floor section in which the football men were working. "That," said he, "weighs nearly a ton and is the biggest net ever made." While the conversation was going on, a pistol cracked, and the crowd along the edge of the track craned forward for a better view. Nothing happened for a moment, then suddenly from one corner of the building, a group of sprinters emerged from a sort of chute.

"It's the hundred yards dash," said

somebody, while Brice explained that the track on that side of the building was 120 yards long, beginning from a long covered alley that extended outside of the main gym. The memorial gym is nothing if not an indoor athletic field, a veritable hothouse of glass and brick, for nurturing athletic buds.

TO DEVELOP RAW MATERIAL

Maine has had this plant for two years, but has needed it much longer. It needs it because it gets most of its athletic timber in the crude, and almost exclusively from the secondary schools of this State, where football is sometimes on a catch-as-catch-can basis. For example, all except one boy who is listed to start for Maine against Bates tomorrow at Lewiston is a native of the Pine Tree State. That one is Harry Hartman, a Litchfield, Conn., senior who is playing his first year of football.

"Maine, under Brice, has had splendid success in its State series. It has lost only one game in the State series in the last five years, that being captured by Colby's championship team of 1923. The team has also dropped only one game of the last sixteen played, New Hampshire providing an upset in the last game of the 1926 season. His teams, as will undoubtedly be the case this season again, have always been noted more for their offensive strength than for their defenses. Brice's motto seems to be, 'If you score two touchdowns while the other team is making one, you can't lose.'"

WHAT DO YOU KNOW ABOUT BANANAS?

Bananas, the bear mascot of recent years, of the University of Maine is a famous character. Whether or not the fact is generally appreciated, his fame is wide spread and of increasing scope as the years go by.

The reign of Bananas VIII is over, as has passed the day of his renowned predecessors but the bears of to-morrow will make their appearance and it therefore seems both fitting and proper that a history of this famous bunch of Bananas be written. To make such a record as complete as possible certain facts are necessary.

Therefore the alumni secretary requests that all alumni write him everything they recall concerning Bananas I to VIII: facts as to origin, life and death. Incidents both sad and humorous in the life of all. What about the first Bananas. "How come?" Where from, how and why? What are your personal recollections of any Bananas? We can't learn too much about them. Do your part and write. Have you any pictures of any of the

bunch? If so, send them in.

Do not get the idea that this history is unimportant. Bananas have had real adventures. The history will add to Maine traditions and literature. Help kill the song, "Yes, we have no Bananas." Do it for Maine.

MORE COMMENT ON OUR INDOOR FIELD

"Patchwork," trade magazine of the E. L. Patch Co. of Boston printed a cut of the Indoor Field at the University of Maine and commented on it as follows in the October, 1927 issue:

"Maine is known throughout the country as a political barometer. 'As Maine goes, so goes the nation,' has been a political slogan for years. It is also known for its potatoes, its forests, its water power, and its unparalleled scenery. It is known even better for the men it produces. This picture shows you the new gymnasium, said to be the largest in the world, at the University of Maine at Orono. At this university, with this gymnasium, the development of none of its athletic teams is held back by bad weather."

Weddings



'16—The wedding of Ellsworth J. Hobbs and Miss Althea F. Smith took place October 10th, 1927 at Winn. Mr. and Mrs. Hobbs are residing at East Millinocket where Mr. Hobbs has a position with the Penobscot Lighting Power Company at East Millinocket.

Ex-'23—Ralph C. "Cliff" Merrow and Miss Hilda M. Kinney were married October 24, 1927 at Houlton. Mr. and Mrs. Merrow are residing at Montpelier, Vermont where Mr. Merrow has a position as claim agent for a large division of the Boston and Maine Railroad.

'25—The wedding of Amory M. Houghton and Miss Margaret Goodhue took place October 3, 1927 at Philadelphia.

'26—Everett M. Lunt and Miss Henrietta M. Starbird were married October 8, 1927 at New Haven, Conn. Mr. Lunt is with the Westinghouse Electrical Manufacturing Company at Pittsburgh, Pennsylvania.

Ex-'26—Doris I. Shorey is now Mrs. Richard Blodgett. They were married March 27, 1927 and are residing at 40 Quimby St., Augusta.

'27-'29—Sarah A. Palmer and Gordon E. Hammond were married October 29, 1927 at Waterville. Mrs. Hammond is assistant principal of the High School at Mattawamkeag and Mr. Hammond is attending the University of Maine.

'27-'25—Serena Wood and Frank W. Hussey were married October 22, 1927 at Bangor. Mr. and Mrs. Hussey are residing at Presque Isle.

Ex-'28—Earl S. Tibbetts and Miss Millicent I. Boober took place September 3, 1927 at Howland. Mr. and Mrs. Tibbetts are residing at Millinocket where Mr. Tibbetts is with The Foundation Company.

Alumni Personals



BY CLASSES

'72—Edwin J. Haskell resides at 541 Brighton Ave., Woodfords.

'75—Charles F. Colesworthy is located at 636 South Semar Ave., Los Angeles, Cal.

'75—Edson F. Hitchings resides at 2 Summer St., Orono.

'75—Whitman H. Jordan is located at Main St., Orono.

'75—Edward D. Mayo may be addressed 2808 South Fremont Ave., Minneapolis, Minnesota.

'75—Albert E. Mitchell is Vice President of the Wyckoff Pipe and Creosoting Company at 522 Fifth Ave., New York, N. Y.

Ex-'75—Alton A. Jackson is a Physician and is located at 512 Broadway, Everett, Mass.

Ex-'75—Sidney S. Soule is residing at New Gloucester.

'76—Fred M. Bisbee may be addressed 8397 Fountain Ave., Hollywood, Cal.

'76—Edward M. Blanding resides at 46 Madison St., Bangor.

'76—Arthur M. Farrington is retired and is located at 1436 Chapin Street, Washington, D. C.

Ex-'76—Randall H. Rines is with the Rines Company at Portland.

'77—Eugene H. Dakin resides at 235 French St., Bangor.

'77—Edward F. Danforth is a Lawyer at Skowhegan.

'77—Ivan E. Webster is located at Ruskin, Florida.

'77—J. Walter Weeks is a contracting architect at Castine.

'78—Charles H. Benjamin is retired and resides at 2215 Lewis Ave., Altadena, Cal.

'78—Cecil C. Chamberlain is a lumber dealer at Enderlin, North Dakota.

'78—Charles C. Elwell may be found at the State Capitol, Hartford, Conn.

'78—Otis C. Webster is located at Augusta.

Ex-'78—Charles F. Plumly resides at Lincoln.

'79—John D. Cutter is retired and is located at 2200 Lewis Ave., Altadena, Cal.

'79—Wilbur F. Decker may be addressed 2021 Stevens Ave., Minneapolis, Minn.

'79—Charles W. Gibbs is a walnut grower located at Concord, California.

'79—George P. Merrill may be addressed 1422 Belmont St., N. W., Washington, D. C.

'79—Charles A. Morse is chief engineer of the Chicago Rock Island and Pacific Railway Company. Mr. Morse resides at Windermere Hotel, Chicago, Ill.

'79—George O. Warren resides at Fryeburg.

Ex-'79—Charles M. Tibbetts is a clerk with the Hollingsworth and Whitney Company. Mr. Tibbetts resides at 124 Washington Ave., Gardiner.

'80—James M. Bartlett is located at Orono.

'80—Franklin L. Patten may be addressed Hampden Highlands.

Ex-'80—Frank A. Spratt is headmaster of the Broad Street School of Providence, Rhode Island. Mr. Spratt resides at 276 Washington Ave., Providence, R. I.

Ex-'80—Daniel Webster is Superintendent of the Maine Division of the American Railway Express Company. Mr. Webster resides at 78 Forest Ave., Bangor.

'81—Oliver C. Farrington is a Geologist at the Field Museum of Chicago, Ill.

'81—Charles H. Fogg is a Coal Operator at Greensburg, Pa.

'81—Edwin W. Osborn is an Insurance Inspector with the Northern Pacific Railway Company at 1036 Northern Pacific Building, St. Paul, Minn.

'81—Harold M. Plaisted is a Patent Attorney and mechanical engineer and resides at 4413a Page Blvd., St. Louis, Mo.

'82—Thomas W. Hine is Vice-President and Manager of the Holmes-Eureka Lumber Company at Eureka, California.

'83—Lucius H. Merrill is a Professor in the Agricultural Department at the University of Maine. Prof. Merrill resides at 178 Main St., Orono.

'83—Harry W. Powers is in the real estate business at 1 Melville Ave., Dorchester, Mass.

'84—Edward S. Abbott is a Physician at 39 High St., Bridgton.

'84—Leslie W. Cutter is a building contractor at 65 State St., Bangor.

'85—Leonard G. Paine is district manager of the C. A. Dunham Company. Mr. Paine resides at 112 South 16th St., Philadelphia, Pa.

'85—Louis W. Riggs is a chemist and is located at Yarmouth.

'85—Fremont L. Russell is a Professor at the University of Maine, Orono.

'86—George G. Barker has a chicken ranch at Route No. 1, Box 77 Santa Cruz, California.

'86—George F. Black is retired and located at 68 Deering St., Portland.

'86—Heywood S. French is residing at 230 Walnut St., Newtonville, Mass.

'86—Sidney S. Twombly is a fruit grower located at R.F.D. No. 1, Fullerton, Cal.

'87—Bertrand E. Clark is a Lawyer at Bar Harbor.

'87—Charles T. Vose is assistant engineer with the Maine Central Railroad Company of Portland. Mr. Vose resides at 13 Grant St., Portland.

'90—Horace P. Farrington is at the United States Navy Yard as draftsman. Mr. Farrington resides at 9 Woodside Ave., Ridgewood, New Jersey.

'90—Allen C. Hardison is at Santa Paula, Cal.

'90—Chandler C. Harvey is Editor and Proprietor of the Fort Fairfield Review at Fort Fairfield.

'90—E. Fenno Heath is located at R.F.D. No. 4, Box 113, Hampton, Virginia.

'90—Edward H. Kelley is a Comptroller at the University of Maine. Mr. Kelley resides at 110 North Main St., Orono.

'91—Cyrus Hamlin is a Physician at 180 Sullivan Place, Brooklyn, N. Y.

'91—Henry V. Starrett is having his mail received at R.F.D. Warren.

Ex-'91—Jacob F. Hersey is Treasurer of the Hersey Paper Company at 40 Maynard St., Arlington, Mass.

'92—Ernest W. Danforth is City Engineer at Somerville, Mass. Mr. Danforth resides at 468 Medford St., Somerville, Mass.

'92—Herbert E. Doolittle is a piano tuner at Tamaroa, Illinois.

'94—Frank C. Bowler is residing at Millinocket.

'94—Charles E. Gilbert is retired and is receiving his mail at Box 233, Bangor.

'94—Frank G. Gould is with The Rines Company of Bangor.

'95—James W. Martin is located at 28 South Daisy Ave., Long Beach, Cal.

'95—Albion Moulton is Vice President and Superintendent of The Allen Iron and Steel Company of Philadelphia, Pa. Mr. Moulton is residing at Wissahickon & Chelton Ave., Philadelphia, Pa.

'96—Gardiner B. Wilkins is civil engineer with the Navy Department at the United States Naval Station, Pearl Harbor, Hawaii.

'96—Charles P. Weston is Professor of Mechanics at the University of Maine.

'97—Stephen S. Bunker is a civil engineer with the City of Bangor and resides at 355 Main St., Bangor.

'97—Justin R. Clary is in the granite business at 267 Chatterton Parkway, White Plains, New York.

'98—C. Parker Crowell is an architect with Crowell & Lancaster at Exchange Building, Bangor. Mr. Crowell resides at 36 Howard St., Bangor.

'98—Leroy E. Dow is a civil engineer with the United States engineer's office at 22 Monument Square, Portland.

'99—Winfield B. Caswell is Hull Inspector with the Southern Pacific Steamship Lines and is located at 116 North 16th St., East Orange, N. J.

'99—Marshall B. Downing is located at 140 West Street, New York, N. Y.

'00—Alan L. Bird is a Lawyer at Rockland.

'00—James E. Closson is a salesman for the Newport Chemical Works, Inc., and is located at 35 Wooster St., Danbury, Conn.

'01—Charles W. Bartlett is a jobber in factory supplies and is located at 639 Penton Building, Cleveland, Ohio.

'01—Mark J. Bartlett is a Counsellor at Law at 132 Main St., Waterville.

'01—Richard H. Berry is a Druggist at Pittsfield.

'02—Arthur B. Foster is located at 724 9th Street, Washington, D. C.

'02—Henry C. French is located at Rumford Center.

'02—Horace P. Hamlin may be addressed 140 Cedar Street, New York, N. Y.

'03—Leroy M. Coffin, Professor of Mathematics at Coe College is residing at 1027 Second Ave., Cedar Rapids, Iowa.

'03—Ralph M. Conner is construction engineer with The J. G. White Engineering Corp. and is located at 2010 Market St., Laredo, Texas.

'04—Roy S. Averill is a structural draftsman with the Fort Pitt Bridge Works. Mr. Averill may be addressed at R.D. No. 2, Canonsburg, Pa.

'04—Roy H. Flynt is proprietor of The Roy Flynt Service at Augusta.

'04—Harold F. French is a farmer at R.D. No. 1, Bangor.

'04—Vaughan Jones may be addressed Box 721 Bangor.

'04—Alfred C. Jordan is superintendent of the Elmira Water Light and R. R. Company at 620 Madison Ave., Elmira, New York.

'04—Paul L. Bean resides at 145 Davis St., Auburn.

'05—Curtis E. Abbott is superintendent of The John MacGregor Corp. Mr. Abbott is located at R.F.D. No. 1, Lincoln.

'05—Ralph H. Alton is with the Worcester Suburban Electric Company and with the Blackstone Electric Company. Mr. Alton resides at 213 Mendon Street, Uxbridge, Mass.

'05—Herbert W. Bachelier is a contractor at Herkimer, New York.

'05—Frank L. Bailey is located at 17 Court St., Plymouth, Mass.

'05—Harry O. Beale is resident engineer with the Montana State Highway Commission at Simms, Montana.

'05—Clayton W. Bowles is in the automobile business at Fairview, Montana.

'05—Joseph W. Crowe is division manager of the Idaho Power Company and resides at 707 North 19th St., Boise, Idaho.

'05—Ernest L. Dinsmore is chairman chemistry department of the Boys High School of Brooklyn, New York. Mr. Dinsmore resides at 109-28 217th St., Queens Village, Long Island, New York.

'06—Harry A. Emery is a moccasin manufacturer at 78 Exchange St., Bangor.

'06—James W. Elms is division manager in the Paint and Varnish department of the Dupont Company at 6th Floor Ledger Building, Philadelphia, Pa.

'06—Philip H. Glover is a civil engineer at Cherryfield.

'06—Harold L. Karl is at Rockland.

'06—Raymond B. Kittredge is professor of transportation engineering at the State University of Iowa. Mr. Kittredge is residing at 630 South Governor St., Iowa City, Iowa.

'06—Joseph A. Laliberte is an attorney at law at Plaisted.

'06—Leon H. Marr is a Pharmacist at Farmington.

'06—Leroy C. Nichols may be addressed 50 Church St., New York, N. Y.

'07—Herman E. McKenzie is an engineer in kiln drying at the Brunswick Lumber Company at Big Bay, Michigan

'07—Mildred Mansfield is teacher at the High School at Greenville.

'07—Joseph F. Merrill is a chemist with the Agricultural Experiment Station of the Kansas State Agricultural College and may be addressed 318 North 16th Street, Manhattan, Kansas.

'07—Robie L. Mitchell is a lawyer at 120 Broadway, New York, N. Y.

'07—Harry E. Packard is a salesman with the Southern Can Company of Baltimore, Maryland. Mr. Packard resides at 2107 Lake Montebello Terrace, Baltimore, Md.

'07—Tedcastle B. Perry is a farmer at Easton.

'07—Heber P. Purington is a highway engineer with the United States Bureau of Public Roads at 1912 Fort Worth National Bank Building, Fort Worth, Texas.

'08—Howard L. Perkins is at 55 Linehan St., Lawrence, Mass.

'08—Mrs. Alice Farnsworth Phillips is a teacher at the Somerset Private School and resides at 298 Center St., Bangor.

'08—Robert E. Potter is a draftsman with the U.S. Navy Yard of Portsmouth, New Hampshire. Mr. Potter resides at 62 Whipple St., Kittery.

'08—William F. Scamman is an instructor at the University of Maine and is residing at 84 College Ave., Orono.

'08—Ernest L. Seavey is a lawyer at 518 Union Building, San Diego, California.

'08—Carroll B. Skillin is a lawyer with Oakes, Skillin & Tapley at 702 Fidelity Building, Portland.

'08—Robert K. Steward is head of Drawing Department of the Michigan State College. Mr. Steward is having his mail received at Box 951, East Lansing, Michigan.

'08—Earle N. Vickery is in the insurance business at Pittsfield.

'08—Clarence M. Weston is project engineer with H. S. Ferguson, consulting engineer at room 1303, 200 Fifth Ave., New York, N. Y.

'08—Walter E. Wilbur is assistant professor of mathematics at the University of New Hampshire. Mr. Wilbur resides at 585 Central Ave., Dover, N. H.

'09—Harold R. Miller is a radio engineer with the United States Navy Department. Mr. Miller resides at 48 Palmer St., Arlington, Mass.

'09—Percy P. Mooney is with the Consumers Power Company at Jackson, Michigan.

'09—Edward W. Morton may be found at Page Ave., Caribou.

'09—Henry L. Nash is manager of the Western Electric Company of Omaha, Nebraska. Mr. Nash is located at 43½ Cuming St., Omaha, Nebraska.

'09—Horace A. Barker is project superintendent with the United States Bureau of Reclamation at Savage, Montana.

'09—Howard G. Philbrook is president of Davis Island Incorporated located at Administration building, Davis Islands, Tampa, Florida.

'09—Lewis F. Pike is manager of the Boston factory of Spaulding Fibre Company. Mr. Pike may be addressed 15 Elkins Street, Boston, Mass.

'09—Clinton A. Plumly is valuation engineer with the Maine Central Railroad at Portland. Mr. Plumly may be found at 45 Glenwood Ave., Portland.

'10—A. Scudder Moore is power sales engineer with Edison Electric Illuminating Company of Brockton, Mass. Mr. Moore resides at 407 Spring St., Brockton, Mass.

'10—Raymond P. Norton is with H. P. Hood & Sons and may be addressed 30 Burr Road, Newton Centre, Mass.

'10—Allen E. Oak is with the Echo Oil Company at Box 1457 Tulsa, Oklahoma.

'10—Edith M. Patch is an entomologist with the Maine Agricultural Experiment Station at the University of Maine.

'10—John N. Philbrook is with the Raymond Concrete Pile Company and is being addressed 195 Serpentine Road, Tenafly, New Jersey.

'10—Charles A. C. Porter is general manager of the Footers Dye Works, Incorporated at Cumberland, Maryland.

'10—Charles O. Pratt is with the Somet Solvay Engineering Corporation and is located at 27 Kensington Terrace, Maplewood, New Jersey.

'10—Edward G. Russell is a draftsman with the Fort Pitt Bridge Works at Pittsburgh, Pa. Mr. Russell resides at 248 West Pike Street, Canonsburg, Pa.

'11—Cecil M. Lycette may be addressed 2406 Oliver Bldg., Pittsburgh, Pa.

'11—Everett H. Maxcy is a lawyer with the New England Public Service Company at Augusta.

'11—Dimon E. Merrill is assistant treasurer of the Bird & Son Inc. of East Walpole, Mass. Mr. Merrill resides at 47 Florence Ave., Norwood, Mass.

'11—Ralph P. Mitchell is with the Travelers Insurance Company and is located at 1113 Park Building, Worcester, Mass.

'11—Fred W. Nason is with the Hollingsworth & Whitney Company of Waterville and resides at 59 Benton Ave., Waterville.

'11—Clifford Patch is with the Orono Pulp & Paper Company and resides at 83 Grove St., Bangor.

'11—Chester S. Phinney is professor of modern language at Roanoke College at Salem, Virginia. Dr. and Mrs. Phinney are being addressed Roanoke College, Salem, Virginia.

'12—John E. Ash is owner of the Bar Harbor Motor Company at Bar Harbor.

'12—Everett W. Bartlett is dairy specialist with D. H. Grondin Milling Co. Mr. Bartlett resides at 7 Lynde St., Nashua, New Hampshire.

'12—Edward F. Carleton is athletic director and teacher at the Asbury Park High School of Asbury Park, New Jersey. Mr. Carleton may be addressed 921 Fourth Ave., Asbury Park, New Jersey.

'12—Charles A. Cavanaugh is a farmer at Pinehurst Farm at Rockport.

'12—Francis E. Clancy is a caretaker at the Bangor State Hospital, Bangor. Mr. Clancy resides at 6 Myrtle St., Orono.

'12—Mr. and Mrs. Charles B. Cleaves are residing at 22 Marlborough Road, Rochester, New York. Mr. Cleaves is special agent for the North British and Mercantile Insurance Company.

'12—Mrs. Samuel T. Dana (Ruth Merrill) is at present located at 1035 Martin Place, Ann Arbor, Michigan.

'12—Arthur L. Deering is assistant director of the Maine Agricultural Extension Service at the University of Maine, Orono.

'13—Ralph W. Buzzell is manager of the R. W. Buzzell Company, building materials at Rockport.

'13—Clifton E. Chandler is head clerk of the Southern Railway Company and Mr. Chandler resides at 3809 Military Road, N.W., Washington, D. C.

'13—Alden Chase is storekeeper and printer at Bryant Pond.

'13—Edward E. Chase is vice president of the Beyer & Small, specialist in Maine Securities at 208 Middle St., Portland.

'13—James E. Church resides at 192 Northern Ave., Gardiner.

'13—Leon A. Dodge is a farmer at North Edgcomb.

'13—W. Clyde Groves is an engineer with the Donora Southern Railroad Company and is being addressed 435 North Alexander St., Monongahela City, Pennsylvania.

'13—Frederick C. Hettlinger is with the United States Industrial Chemical Company and is being addressed 212 Goodwood Road, Baltimore, Md.

'13—Ralph C. Hodges is assistant engineer with Public Service Production Company of Newark, New Jersey. Mr. Hodges is at Room M 3, 80 Park Place, Newark, N. J.

'13—M. Ernest Jones is in the poultry and general farming business at West Cheshire, Conn.

'13—Allan F. McAlary is manager of the Camden & Rockland Water Company at Rockland

'13—Mildred H. Merrill is with the Federal Government and may be addressed 1422 Belmont St., Washington, D. C.

'13—William H. Merrill is manager of The Ohio Power Company and may be addressed 205 Daniel St., Van Wert, Ohio.

'14—Harold V. Cobb is physical director with the Union Endicott High School. Mr. Cobb resides at 807 North St., Endicott, New York.

'14—Mary L. Cousins resides at Brewer.

'14—Harold L. Dinsmore is an industrial engineer at 347 Madison Ave., New York, N. Y. Mr. Dinsmore resides at 3 East Wilmot Ave., Llanerch, Delaware County, Pennsylvania.

'14—Frank G. Driscoll is general attorney with Sinclair Refining Company of New York, N. Y. Mr. Driscoll resides at 45 Nassau St., New York, N. Y.

'14—Albert Felton is industrial engineer with the Minear Coal Mining Company. Mr. Felton resides at Parsons, West Virginia.

'14—Albert B. Ferguson is being addressed at 473 Seventh Ave., Long Island, N. Y.

'14—John W. Gowen is a Biologist at Rockefeller Institute, Princeton, New Jersey.

'14—Frederick S. Jones is commercial engineer with the General Electric Company of Lynn, Mass. Mr. Jones resides at 21 Phillips Circle, Swampscott, Mass.

'14—John N. Junkins is located at 1024 Claytonia Terrace, St. Louis, Mo.

'14—A. Lincoln King is a merchant with King & Dexter of Portland.

'14—Fred J. Lewis is professor of civil engineering at Vanderbilt University of Nashville, Tennessee.

'14—Edward M. Loftus is located at 404 Helena Bank Building, 650 South Spring Street, Los Angeles, California.

'14—Paul W. Monohon may be addressed 145 Paulin Blvd., Leonia, New Jersey.

'14—Arthur W. Patterson has been nominated by Governor Brewster to be judge of the Hancock County Probate Court.

'15—H. Walter Leavitt is associate professor of Civil Engineering at the University of Maine, Orono.

'15—Harold H. Beverage is radio engineer with the Radio Corporation of America and is at the Radio Station, Riverhead, New York.

'15—Miretta L. Bickford is teacher of history at the Weaver High School, 25 Ridgefield Street, Hartford, Conn.

'15—Ava H. Chadbourne is with the Department of Education at the University of Maine, Orono.

'15—Everett B. Coffin is city engineer with the City of Waterville.

'15—Edward W. Conners is at Ship Harbour, Nova Scotia.

'15—Harold Cooper is a shoe manufacturer with Wise & Cooper at Auburn.

'15—Maynard J. Creighton is sales manager with Lapon Company at Greenwich, Conn.

'15—Russell M. Crispin is manager of department store for W. T. Grant Company at 408 Texas St., Shreveport, Louisiana.

'15—Davis Crowell is a fruit grower at Sandwich, Mass.

'15—Ralph B. Easson is manager of Puritan Poultry Corporation at Atascadero, California.

'15—Norman E. Emmons is superintendent of construction with Utica Gas & Electric Company and is being addressed 1927 Baker Ave., Utica, New York.

'15—Raymond H. Fogler is director of personnel with W. T. Grant Company at 455 Seventh Ave., New York, N. Y. Mr. Fogler resides at 1783 Undercliff Ave., New York, N. Y.

'15—James L. Gulliver is manager of Armour & Company at Boston, Mass. Mr. Gulliver resides at 11 Boston Ave., West Medford, Mass.

'16—Zella E. Colvin is teaching in Central State Teachers College at Mt. Pleasant, Michigan.

'16—Guy B. Condon is located at South Penobscot.

'16—Arthur L. Davis is chief engineer of the Bangor Hydro-Electric Company and resides at 28 William St., Bangor.

'16—M. Muriel DeBeck is teaching Latin in the High School at Fort Fairfield.

'16—Winfred H. Edmister is superintendent of Schools at Norway.

'16—T. Everett Fairchild is clergyman at the Methodist Episcopal Church of Gorham. Rev. Fairchild receives his mail at Box 256, Gorham.

'16—William T. Faulkner is assistant superintendent of the Bethlehem Shipbuilding Corporation at the Fore River Plant. Mr. Faulkner may be addressed 89 Edgemont Road, East Braintree, Mass.

'16—Charles H. Folsom is with the Maine State Highway Commission and is located at 21 School St., Augusta.

'16—Frank W. Gray, Jr. may be found at 1432 Oneida St., Utica, New York.

'16—Florence E. Greenleaf is a teacher and is being addressed 31 Rand Ave., Waterbury, Conn.

'16—Everett G. Ham is chief chemist with John A. Manning Paper Company. Mr. Ham resides at 22 Lansing Ave., Troy, New York.

'16—Mildred Jones is teacher of household arts at the Wakefield High School and is having her mail received at 26 Avon St., Wakefield, Mass.

'17—Doris Savage resides at 35 Maple St., Bangor.

'17—Ralph E. Sawyer is a telephone engineer with the Ohio Bell Telephone Company. Mr. Sawyer resides at 750 Huron Road, Cleveland, Ohio.

'17—Claude L. Sidelinger is superintendent of schools at Monson.

'17—Miner R. Stackpole is associate hydraulic engineer with the United States Geological Survey at Augusta.

'17—Frank O. Stephens is wholesale meat and provision dealer at Auburn and he resides at 21 Academy St., Auburn.

'17—J. N. Stephenson is editor of Pulp & Paper magazine and principal of Institute of Industrial Arts at Gardenvale, Quebec.

'17—Stanley W. Stoddard is electrical engineer with the New England Power System of Worcester, Mass. Mr. Stoddard resides at 35 Harvard Street, Worcester, Mass.

'17—Fletcher A. Thomas is a lumber and cattle dealer at Leeds Center.

'17—Forest Treworgy is a hardware merchant with the Milo Hardware Company at Milo.

'17—Herbert E. Watkins is Captain First Cavalry with the United States Army at Camp Marfa, Marfa, Texas.

'17—Donald S. Welch is assistant professor in the Department of Plant Pathology at Cornell University, Ithaca, New York.

'18—Lewis T. Calhoun may be addressed 6 Parkway Road, Stoneham, Mass.

'18—Beryl E. Cram is teaching Spanish and English in the High School at Swampscott, Mass. and residing at 108 Farragut Road, Swampscott, Mass.

'18—Thomas H. Crawshaw is a forester with Finch-Pruyn & Company at 1 Glen Street, Glens Falls, New York.

'18—Walter J. Creamer, Jr. is associate professor at the University of Maine, Orono. Mr. Creamer resides at 331 Center St., Bangor.

'18—Winburn A. Dennett is principal of the High School at Hopedale, Mass. Mr. Dennett resides at 5 Dennett St., Hopedale, Mass.

'18—Kathryn M. Dow is a domestic science teacher in the High Schools at Melrose, Mass. Miss Dow resides at 424 Lebanon St., Melrose, Mass.

'18—Leigh P. Gardner is an instructor at the University of Maine, Orono. Mr. Gardner resides at 46 North Main St., Orono.

'18—G. Lester Hale is principal of the High School at Rockport.

'18—Sumner A. Hall is associate dairy manufacturing specialist with the United States Department of Agriculture at Washington, D. C. Bureau of Dairy Industry.

'19—Willard C. Sisson is a teacher of biology and Physiology at the Weaver High School of Hartford, Conn. Mr. Sisson resides at 364 Blue Hills Ave., Hartford, Conn.

'19—Clyde W. Stewart is sulphite mill superintendent with the Groveton Paper Company at Groveton, New Hampshire.

'19—Elmer J. Wade is with the General Electric Company and is located at 1542 North St., Pittsfield, Mass.

'19—Mr. and Mrs. Vernon Wallingford reside at 145 Hereford Ave., Ferguson, Missouri. Mr. Wallingford is organic research chemist with Mallinckrodt Chemical Works of St. Louis, Missouri.

'19—Francis A. Walsh is an attorney at law at Caribou.

'19—Willis S. Winslow is hydrographic engineer with the State Highway Commission of Raleigh, North Carolina.

Ex-'19—Mrs. Alice C. Bridges is a chiropractor at Manufacturers National Bank Building, Lewiston.

Ex-'19—Henry W. Campbell is located at 21 North St., Augusta.

Ex-'19—Arthur N. Lawrence is a sardine packer at Rockland.

Ex-'19—Frank W. Lord is a farmer at Kezar Falls.

Ex-'19—Richard F. Millett is with Millett, Fish & Dresser Company at 477 Congress St., Portland.

Ex-'19—Edmund C. Melcher is with the S. D. Warren Company at Bingham.

Ex-'19—James B. McGrath is a physician at 155 East Moshulu Parkway, New York, N. Y.

Ex-'19—Allen B. Rowe is located at 7 Woodbury St., South Portland.

Ex-'19—Charles M. Ziegler may be addressed 6306 Cates Ave., University City, Missouri.

'20—George A. Potter is chief adjuster with the Liberty Mutual Insurance Company and is located at 230 East Ohio St., Chicago, Ill.

'20—Flavia L. Richardson is a teacher of biology in the High School at West Haven, Conn. Miss Richardson is residing at 70 Smith Street, West Haven, Conn.

'20—Charles A. Snow is located at Fryeburg.

'20—Walter S. Tolman is with the National Aniline & Chemical Company and Mr. Tolman resides at 165 Cleveland Ave., Buffalo, New York.

'20—Warren P. Upham is a forester and resides at 184 Main St., Orono.

'20—Willard Wight is a lawyer with Tuttle, Wyman & Starr and is addressed 839 Elm St., Manchester, N. H.

'20—Fred S. Willard may be addressed 26 Rutland Place, Rockville Center, New York.

Ex-'20—Mrs. David N. Beach resides at 52 Willow St., Belmont, Mass.

Ex-'20—Richard A. Brown is located at Ridgelyville.

Ex-'20—Eleanor Clarke is head of English Department of the Warwick High School and is residing at 160 Warwick Ave., Edgewood, Rhode Island.

Ex-'20—Carl M. Glidden is located at 25 Morrison Ave., West Somerville, Mass.

Ex-'20—Vinton E. Gribbin is located at 96 Reservation Road, East Milton, Mass.

Ex-'20—Mrs. Warren E. Hill (Kathleen Snow) is residing at 38 Sumner St., Adams, Mass.

Ex-'20—Lawrence A. Hutchinson is a florist at Caribou.

Ex-'20—Carl S. Johnson is located at 50 Codman St., Portland.

Ex-'20—George H. Jordan is claim adjuster with the Liberty Mutual Insurance Company of 1700 Walnut St., Philadelphia, Pa. Mr. Jordan resides at 602 Penfield Ave., Upper Darby, Pennsylvania.

'21—George J. Froberger is a teacher at the High School at Warren.

'21—Francis J. Goggin is with the United States Government of Belmont, Mass. Mr. Goggin resides at 673a Belmont St., Belmont, Mass.

'21—Erling Heistad is an instructor at the Lebanon Public Schools of Lebanon, New Hampshire.

'21—Lilla C. Hersey is a teacher at the Norwich Free Academy and is being addressed 11 Linden Parkway, Norwich, Conn.

'21—Ina Jordan is teaching history at the Manchester High School, Manchester, New Hampshire. Miss Jordan resides at 12 Nashua St., Manchester, N. H.

'21—Emilie A. Kritter is a teacher at the Yonkers High School of Commerce. Miss Kritter resides at 155 Livingston Ave., Yonkers, N. Y.

'21—Raymond H. Lovejoy is county agent of the Extension Service at 9 Maple Street, Sanford.

'21—Edward L. McManus resides at 326 Pine St., Rumbold.

'21—Elh A. Marcoux is City Health Officer with the City of Berlin, N. H. Mr. Marcoux resides at 160 Oak Street, Berlin, N. H.

'21—Leon O. Marshall is county agent with the Extension Service at Bangor.

'21—Thomas A. Murray is Principal of Hartland Academy at Hartland.

'21—Donald C. Osborn is with the New York Telephone Company. Mr. Osborn resides at 55 Parade Place, Brooklyn; New York.

'21—James K. Pennell is a teacher at Bangor High School. Mr. Pennell resides at 266 French St., Bangor.

'21—Mrs. Donald B. Perry (Cora M. Phillips) is residing at 10 Mountain Ave., Maplewood, New Jersey.

'21—Wesley C. Plumer is with the General Electric Company and is located at 312 Harrison Ave., Schenectady, New York.

'21—Harold E. Pratt is a chemist with the Pejepscot Paper Company. Mr. Pratt resides at 7 Everett St., Brunswick.

'21—Joseph S. Robinson is Principal of the High School at Winn.

'21—Florence U. Salley is teacher at the Hope Street High School and Miss Salley resides at 15 Keene St., Providence, R. I.

'21—Clarence W. Sanborn resides at 17 Conomo Ave., East Lynn, Mass.

'22—Lawrence W. Davee is with the Bell Telephone Laboratories and is residing at 1438 Ocean Ave., Brooklyn, New York.

'22—Leona L. DeBeck is a French teacher at the High School at Fort Fairfield.

'22—Robert W. Dow is engineer and salesman with the Blue Diamond Company of Los Angeles, California. Mr. Dow may be addressed 1530 Glendale Blvd., Los Angeles, Cal.

'22—J. Paul Dufour is highway engineer with the Illinois Division of Highways at 512 Metropolitan Building, East St. Louis, Illinois.

'22—Charles L. Eastman is county agent for Androscoggin and Sagadahoc counties with headquarters at 172 Summer St., Auburn.

'22—Rodney G. Folsom is with Folsom Brothers at Howard St., Springvale.

'22—Gladys M. Gould is teacher of Home Economics at the Milo High School. Miss Gould resides at 9 Clinton St., Milo.

'22—Winslow K. Herrick is at 81 Elm St., South Brewer.

'22—Henry F. Hill, Jr. is civil engineer with the United States Geological Survey at 2500 Custom House, Boston, Mass.

'22—Leslie W. Hutchins is a salesman for The Texas Company at 77 Grand St., Portland.

'22—Stanley J. Johnson is at 52 Henry Ave., Lynn, Mass.

'22—Robert E. Kelley is civil engineer for the State of Illinois. Mr. Kelley resides at 113 Galena Ave., Dixon, Ill.

'22—Robert W. Laughlin is safety engineer with the Liberty Mutual Insurance Company. Mr. Laughlin resides at 33 Orkney St., Woodfords.

'22—Bernard A. Libby is at 170 Emerick.

'22—John D. McCrystle is with the Brown Company of Berlin, New Hampshire. Mr. McCrystle resides at 325 Church St., Berlin, N. H.

'22—Fred F. Marston is district manager of the New England Tel. & Tel. Company. Mr. Marston resides at 63 Ventura St., Springfield, Mass.

'22—Seth H. Pinkham is at Cape Porpoise.

'23—Harold F. Blackwood is High School Principal and attorney at law at Stonington.

'23—George V. Blanchard is live stock and real estate dealer at Phillips.

'23—Mrs. George Burgess (Iva Merchant) is scientific aid with the Maine Agricultural Experiment Station, Orono.

'23—Janet Cole is teacher of home economics at the Washington State Normal School at Machias.

'23—Leon E. Crediford is caretaker of the George A. Mann estate at Shapleigh.

'23—Everett C. Cunningham is a teacher at Washburn.

'23—Theodore S. Curtis is teacher and athletic coach at Lee Academy, Lee.

'23—Philip D. Davis is civil engineer with the Erie Railroad and is located at 218 Park St., Akron, Ohio

'23—Franz R. Dolliver is special apprentice with the Bangor & Aroostook Railroad at Derby.

'23—Henry C. Fenderson is research chemist with Lever Brothers Company of Cambridge, Mass. Mr. Fenderson resides at 85 Prescott St., Cambridge, Mass.

'23—Roy L. Fernald is a student at Harvard University in Government. Mr. Fernald resides at 33½ Mellen St., Cambridge, Mass.

'23—Kenneth E. Gibbs is county club agent with The Hillsboro County Farm Bureau. Mr. and Mrs. Gibbs are residing at 40 Amherst St., Milford, N. H.

'23—Clarence B. Gould is superintendent of Amos D. Bridges Sons Inc. of Hazardville, Conn.

'23—Elizabeth A. Harkness is a graduate student at the University of Maine. Miss Harkness resides at R. No. 7, Bangor.

'23—Maurice L. Hatch is a farmer at Old Town, R.F.D. No. 1

'23—Philip R. Hathorne is a civil engineer with the United States Coast and Geodetic Survey. Mr. Hathorne is located at 202 Burke Building, Seattle, Washington.

'23—Rowene E. Hersey is located at Y.W. C.A., New Britain, Conn.

'23—Eric S. Hope is at 116 Waltham St., Pawtucket, Rhode Island.

'23—David W. Hoyt is farming at Easton.

'23—Percy L. Johnson is a teacher of biology at the John Hopkins University at Baltimore, Md.

'23—Stuart M. Johnson is a telephone engineer with the New England Tel. & Tel. Company and is located at 45 Forest Ave., Portland.

'24—Constance M. Turner is now Mrs. Raymond Thompson and resides at 14 Pearl St., St. Johnsbury, Vermont.

'24—John L. Townsend is mechanical draftsman with Stone & Webster, Inc. Mr. Townsend is located at 35 Bonad Road, Arlington, Mass.

'24—H. Richard Trask is instructor in the Weaver High School at Hartford, Conn.

'24—Ruth E. Waterhouse is teacher of piano at 7 Bradbury St., Old Town.

'24—H. Bernice Wentworth is head of English Department of the Story High School at Manchester, Mass.

'24—Morton C. Whitcomb is sub-principal of Ellsworth High School, Ellsworth.

Ex-'24—William F. Drislane is located at 21 Oneida St., East Lynn, Mass.

Ex-'24—Nellie M. Farnsworth is teaching at Center Conway, New Hampshire.

Ex-'24—Julian C. Goodrich is assistant superintendent of the American Woolen Company at Skowhegan.

Ex-'24—Irene Guppy is now Mrs. William S. Parsons and resides at East New Portland. Mr. and Mrs. Parsons were married June 26, 1924 and they now have two boys, Robert Louis, aged 2 years and Philip Henry, aged 4 months.

Ex-'24—Albion O. Larson is a garage manager at Brownville.

Ex-'24—Margaret Mason is secretary to the President of the J. P. Bass Publishing Company, Bangor.

Ex-'24—Donald H. Pike is assistant foreman at The Foxboro Company and is located at 6 Centennial St., Foxboro, Mass.

Ex-'24—Grace E. Shaw may be addressed Fort Fairfield.

Ex-'24—Charles M. Watson is with C. W. Watson & Sons at Manchester, N. H.

'25—Dwight L. Moody is superintendent of schools at Richmond.

'25—Dorothy E. Mossler is instructor of English at the Cony High School, Augusta. Miss Mossler resides at 30 Bangor St., Augusta.

'25—LeRoy A. Mullin is teaching at the Massachusetts Institute of Technology at Boston, Mass.

'25—Robert S. Pike is a farmer at Cornish.

'25—Laura E. Pratt is a teacher in the Newport High School at Troy.

'25—Harold E. Pressey is a student at Harvard Medical School. Mr. and Mrs. Pressey reside at 228 Warren St., Allston, Mass.

'25—Albert H. Repscha is instructor in mechanical engineering and is assistant coach of football and baseball at Drexel Institute, Philadelphia, Pa. Mr. Repscha resides at 4612 Osage Ave., Phila., Pa.

'25—Hilton J. Ridlon is with the United States Bureau of Fisheries at Reedville, Virginia

'25—Lincoln A. Sennett is a teacher at Washington State Normal School, Machias.

'25—David M. Shapleigh is with the Amoskeag Manufacturing Company and is located at 79 Prospect St., Manchester, N. H.

'25—Francis H. Shepherd is a salesman with Landers, Frary & Clark of New Britain, Conn.

'25—Stanislaus J. Smart is an engineer with The Newfoundland Power & Paper Company at Glynmill Inn, Corner Brook, Newfoundland.

'25—Hollis A. Smith is a student for master's degree in forestry at Harvard Forest, Peter-sham, Mass.

'25—Virgil C. Smith is a draftsman with the Orono Pulp & Paper Company at Orono. Mr. Smith resides at 10 Beach St., Orono.

'26—Sylvester C. Poor is with the Maine State Highway Commission at Augusta.

'26—Theda A. Ray is head of Home Economics at the Freeport High School. Miss Ray resides at 29 Washington St., Auburn.

DILLINGHAM'S
BOOKSELLERS, STATIONERS
AND BOOKBINDERS
BANGOR, MAINE

KARDEX RAND
LIBRARY BUREAU
SAFE CABINET
RAND KARDEX SERVICE CORP.
PORTLAND-BANGOR

Every Banking Service

CHECKING	SAVINGS
TRUSTS	BONDS
	VAULTS

MERRILL TRUST CO.
Dexter Bucksport Machias Jonesport
BANGOR, MAINE
State and National Supervision

Save Your Eyes

Dr. C. W. Trail says:—"When I am not using the Farrington, my wife is using it; when my wife is not using it, our 8-year old daughter is using it. Every home should have at least one."

Insures Correct Posture



At last—a Long Felt Human Want is Filled by this great necessity—Dr. Farrington's portable

Reading Table for the Lap

Conserves the Life of Your Eyes

Here is the helper you have always needed. It saves your eyes—conserves your energy—insures correct posture—prevents eyestrain—permits concentration with real relaxation and absolute comfort. The FARRINGTON supports books, magazines, reading matter, typewriter, writing materials, etc., at just the right angle to insure correct vision, regardless of position. It will help everyone who reads, writes, draws, etc.

IDEAL FOR CHILDREN

Don't let your child hump! It's dangerous! Eyestrain, distorted organs, curved spine and retardation of normal development results. The Farrington compels correct posture.

Students Delight In Its Use

Prof. E. L. Eaton, University of Wis., says: "It is a joy to read a book of any size, resting easily in a rocking chair. Thousands will now have a new joy reading while resting."

With the Farrington every one can increase their capacity for mental effort.



Sit right—read right—feel right

Think what this means! Comfort, enjoyment, greater mental and physical energies. Greater facility for the mechanics of reading and writing. **Genuine relaxation.** The Farrington allows you to assume a comfortable position when reading, writing, etc.

Indispensable to Invalids

Used with detachable metal legs for Reading in Bed by sick, invalid or crippled patient in home, hospital or sanitarium. Used on beach or in the camp for eating, cards, etc.



Ideal Gift Usable in so many ways, it will give many years of joyful service. Beautifully finished. Light weight (less than 48 ozs.) sturdily constructed, portable, folds to 1 inch. Size 12x18 inches. A handsome piece of furniture adjustable to any position.

- Styles and Prepaid Prices**
- 1. Natural Finish.....\$6.50
 - 2. Walnut Finish..... 7.50
 - 3. Mahogany Finish..... 7.50
 - 5. Genuine Walnut..... 9.50
 - 6. Genuine Mahogany..... 9.50

Note: Special detachable legs for reading, writing or eating in bed as shown above \$1.00 extra.

Order Now on 5 Days' Trial Just tell us the style designed. Your Farrington will be shipped promptly, prepaid everywhere in U.S.A. Use it for 5 days. If you're not delighted, we will refund your money. Just enclose your check or instruct us to ship C.O.D. STATE STYLE DESIRED.

The Farrington Company
21 W. Elm St.
Dept. AG-2
Chicago
Illinois



'26—Mary M. Roche is Dean of Girls at North Yarmouth Academy, Yarmouth.

'26—Willis R. Rollins is Principal of Jay High School, Jay.

'26—Ellsworth L. Ross is employment interviewer with The Western Electric Company. Mr. Ross is located at 738 High St., Newark, N. J.

'26—Mary I. Samways is teacher of English and Latin at Brooksville High School.

'26—Alfred F. Stevens is with the Farmingdale Construction Department, Farmingdale.

'26—Karl F. Switzer is with the Philadelphia Electric Company. Mr. Switzer is located at Central, Y.M.C.A., Philadelphia, Pa.

'26—Robert A. Tate is at Box 412, Presque Isle.

'26—Lawrence G. Thurston is with the International Paper Company at Piercefield, New York.

'26—Harold C. Webber is with the Munising Paper Company and is located at 323 Elm Ave., Munising, Michigan.

'26—Gerald S. Wheeler is with the United States Forest Service at Laconia, New Hampshire.

'26—Seth A. Whitcomb is at Readfield.

'26—Frances M. Willetts is teacher of English at Brewer High School. Miss Willetts resides at 113 Lincoln St., Bangor.

'26—Ivan M. Wood is principal of Good Will Schools at Hinkley.

'26—Jessie H. Wood is a chemist with Scovill Manufacturing Company of Waterbury, Conn. Mr. Wood is located at 256 Pearl St., Seymour, Conn.

Ex-'26—Helen C. Libby is a Decorator with Dupont at Scarborough.

Ex-'26—Elmer F. McFarland is with Hyde-Windlass Company at 20 Mechanic St., Bath.

Ex-'26—Leslie G. McGary is with F. H. McGary, wholesale optician at 275 Center St., Bangor.

Ex-'26—George R. Mower is a R.F.D. carrier and is located at R.F.D. No. 1, Bangor.

Ex-'26—Richard B. Paquette is residing at 106 Perry St., New York, N. Y.

Ex-'26—Arthur D. Patterson is located at 14 Church St., Messena, New York.

Ex-'26—Davis B. Robinson is at Robinsons Garage, Southwest Harbor.

Ex-'26—Philip A. Rowe is at Box 57, Haverhill, Mass.

Ex-'26—Howard H. Small is with Shirley Rogers, at Veazie.

Ex-'26—Merrill W. Sweetser is at Newport.

Ex-'26—Eleanor F. Waite is at Richardson Ave., Livermore Falls.

'27—Achilles Cassista is at Y.M.C.A., Reading, Pennsylvania.

'27—Richard G. Clark is residing at 232 Union St., Schenectady, N. Y.

'27—Lawrence Cogswell is at the University of Michigan taking advanced degrees. Mr. Cogswell resides at 514 Monroe St., Ann Arbor, Michigan.

'27—Paul D. Lamoreau is with the General Electric Company at Schenectady, New York enrolled in the testing department of the Company. Mr. Lamoreau resides at 232 Union St., Schenectady, N. Y.

'27—Marguerite E. McQuaide has recently been elected Vice President of the New Hampshire State Home Economics Association. Miss McQuaide is at the Department of Home Economics at Keene Normal School, Keene, New Hampshire.

'27—Clarence E. Skillings has accepted a fine position with the W. T. Grant Company and is located at Norfolk, Virginia.

Ex-'27—Mr. and Mrs. James B. Hanson (Margaret Mulvaney) are located at Cumberland Center.

Ex-'27—Myron S. Mason is with Stone & Webster at Federal Street, Boston, Mass.

Selling SERENITY

A man wants to sell you a serenity of mind—one of the best possible possessions.

He offers to insure an adequate education for your children.

He offers to insure you a sufficient and unfluctuating income in your later years.

He offers to create an estate for your family.

He offers to make sure that your business will not suffer through the death of a key executive.

He offers to be of great assistance to you in your relations with your employees.

Who is he? He is a John Hancock Agent. He does not create a need in you, he fills one. His commodity is future material security, the basis of serenity of mind.

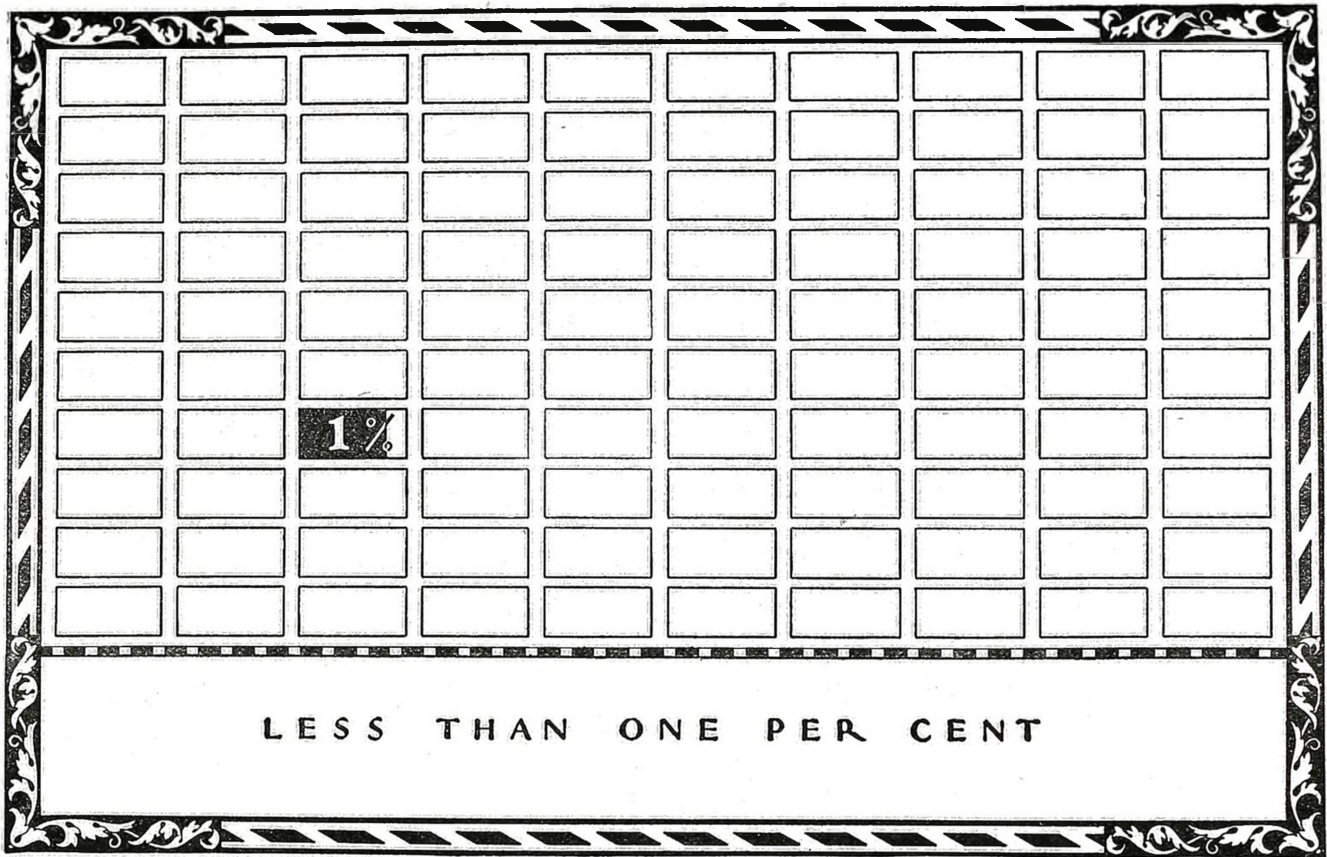
Ask him to come in.



A STRONG COMPANY, Over Sixty Years in Business. Liberal as to Contract, Safe and Secure in Every Way.

Bacon Printing Co.

Dependable Printers
22 State Street, Bangor, Me.
We also make Rubber Stamps.



*An Advertisement of
the American Telephone and Telegraph Company*

No ONE person owns as much as 1% of the capital stock of the American Telephone and Telegraph Company.



The company is owned by more than 420,000 people, with stockholders in every section of the United States. It, in turn, owns 91% of the common stock of the operating companies of the Bell System which give telephone service in every state in the Union, making a national service nationally owned.

The men and women owners of the American Telephone and

Telegraph Company are the largest single body of stockholders in the world and they represent every vital activity

in the nation's life, from laborer and unskilled worker to wealthy and influential executive. Although the telephone was one of the greatest inventions of an age of large fortunes, no one ever made a large fortune from it—in fact, there are not any “telephone fortunes.” The Bell Telephone System is owned by the American people. It is operated in the interest of the telephone users.



ROOSEVELT
New York, N. Y.



MOUNT ROYAL
Montreal, Can.



RADISSON
Minneapolis, Minn.



SENECA
Rochester, N. Y.



BLACKSTONE
Chicago, Ill.



PERE MARQUETTE
Peoria, Ill.



WILLARD
Washington, D. C.



CORONADO
St. Louis, Mo.



OAKLAND
Oakland, Calif.



WOLFORD
Danville, Ill.



NEIL HOUSE
Columbus, O.



CLAREMONT
Berkeley, Calif.



URBANA-LINCOLN
Urbana, Ill.



SCHENLEY
Pittsburgh, Pa.



CALIFORNIAN
Fresno, Calif.



SAINT PAUL
St. Paul, Minn.



MULTNOMAH
Portland, Ore.



PALACE
San Francisco, Calif.



SINTON
Cincinnati, O.

These hotels are your hotels

Special features are provided for our Alumni

Our alumni are urged to use Intercollegiate Alumni Hotels when travelling, and when arranging for luncheons, banquets and get-togethers of various sorts.

You will find at each Intercollegiate Alumni Hotel an index of the resident Alumni of the participating colleges. Think what this means when you are in a strange city and wish to look up a classmate or friend.

You will find at these hotels a current copy of your Alumni publication.

You will also find a spirit of co-operation and a keen desire to see you comfortably housed and adequately provided for. Reservations may be made from one Intercollegiate Alumni Hotel to another as a convenience to you.

Intercollegiate Alumni Hotels are a new and vital force in assisting your Alumni Secretary. He urges you to support them whenever and wherever possible. He will be glad to supply you with an introduction card to the managers of all Intercollegiate Alumni Hotels, if you so request.

THE PARTICIPATING COLLEGES

The alumni organizations of the following colleges and universities are participants in the Intercollegiate Alumni Hotel movement:

- | | | | | |
|--------------------|--------------------|---------------------|---------------------|------------------------|
| Akron | Colorado | Maine | Oregon State | Virginia |
| Alabama | Columbia | M. I. T. | Penn State | Virginia |
| Amherst | Cornell | Michigan State | Pennsylvania | Polytechnic Institute |
| Antioch | Cumberland | Michigan | Princeton | Washington and Lee |
| Bates | Emory | Mills | Purdue | Washington State |
| Beloit | Elmira | Minnesota | Radcliffe | Washington (Seattle) |
| Bowdoin | Georgia | Missouri | Rollins | Washington (St. Louis) |
| Brown | Georgetown College | Montana | Rutgers | Wellesley |
| Bryn Mawr | Goucher | Mount Holyoke | Smith | Wesleyan College |
| Bucknell | Harvard | Nebraska | South Dakota | Wesleyan University |
| Buffalo | Illinois | New York University | Southern California | Western Reserve |
| California | Indiana | North Carolina | Stanford | Whitman |
| Carnegie Institute | Iowa State College | North Dakota | Stevens Institute | Williams |
| Case School | Kansas | Northwestern | Texas A. and M. | Winthrop |
| Chicago | Teachers' Coll. | Oberlin | Texas | Wisconsin |
| College of the | Kansas | Occidental | Tulane | Wittenberg |
| City of New York | Lake Erie | Ohio State | Union | Wooster |
| Colgate | Lafayette | Ohio Wesleyan | Vanderbilt | Worcester |
| Colorado | Lehigh | Oklahoma | Vassar | Polytechnic Institute |
| School Mines | Louisiana | Oregon | Vermont | Yale |



SCHENLEY
Pittsburgh, Pa.



CALIFORNIAN
Fresno, Calif.



SAINT PAUL
St. Paul, Minn.



MULTNOMAH
Portland, Ore.



PALACE
San Francisco, Calif.



SINTON
Cincinnati, O.



ST JAMES
San Diego, Calif.



WALDORF-ASTORIA
New York, N. Y.



ONONDAGA
Syracuse, N. Y.



WOLVERINE
Detroit, Mich.



BENJAMIN FRANKLIN
Philadelphia, Pa.



MUEHLEBACH
Kansas City, Mo.

Intercollegiate Alumni Hotels



Every Dot Marks an Intercollegiate Alumni Hotel

Baltimore, Md., *Southern*
Berkeley, Cal., *Claremont*
Bethlehem, Pa., *Bethlehem*
Birmingham, Ala., *Bankhead*
Boston, Mass., *Copley-Plaza*
Chicago, Ill., *Blackstone*
Chicago, Ill., *Windermere*
Cincinnati, Ohio, *Sinton*
Columbus, Ohio, *Neil House*
Danville, Ill., *Wolford*
Detroit, Mich., *Wolverine*
Fresno, Cal., *Californian*
Kansas City, Mo., *Muehlebach*

Lincoln, Nebr., *Lincoln*
Los Angeles, Calif., *Biltmore*
Madison, Wis., *Park*
Minneapolis, Minn., *Radisson*
Montreal, Canada, *Mount Royal*
New Orleans, La., *Monteleone*
New York, N. Y., *Roosevelt*
New York, N. Y., *Waldorf-Astoria*
Northampton, Mass., *Northampton*
Oakland, Cal., *Oakland*
Peoria, Ill., *Pere Marquette*
Philadelphia, Pa., *Benjamin Franklin*
Pittsburgh, Pa., *Schenley*

Portland, Ore., *Multonomah*
Rochester, N. Y., *Seneca*
Sacramento, Cal., *Sacramento*
St. Louis, Mo., *Coronado*
St. Paul, Minn., *Saint Paul*
San Diego, Cal., *St. James*
San Francisco, Cal., *Palace*
Seattle, Wash., *Olympic*
Syracuse, N. Y., *Onondaga*
Toronto, Canada, *King Edward*
Urbana, Ill., *Urbana-Lincoln*
Washington, D. C., *Willard*
Williamsport, Pa., *Lycoming*

The Intercollegiate Alumni Hotel movement is sponsored by the Alumni Secretaries and Editors of the participating colleges and directed by

INTERCOLLEGIATE ALUMNI EXTENSION SERVICE, 18 E. 41st St., New York, N. Y.

DIRECTORS

J O BAXENDALE
Alumni Secretary
University of Vermont

STEPHEN K LITTLE
Princeton Alumni Weekly
Princeton University

J L MORRILL
Alumni Secretary
Ohio State University

W B SHAW
Alumni Secretary
University of Michigan

A C BUSCH
Alumni Secretary
Rutgers College

JOHN D. McKEE
Wooster Alumni Bulletin
Wooster College

W R. OKESON
Treasurer of
Lehigh University

ROBERT SIBLEY
Alumni Secretary
University of California

R W HARWOOD
Harvard Alumni Bulletin
Harvard University

HELEN F McMILLIN
Wellesley Alumnae Magazine
Wellesley College

R W SAILOR
Cornell Alumni News
Cornell University

FLORENCE H SNOW
Alumnae Secretary
Smith College

E N SULLIVAN
Alumni Secretary
Penn State College

LEVERING TYSON
Alumni Federation
Columbia University

E T T. WILLIAMS
Brown University



KING EDWARD
Toronto, Can.



BANKHEAD
Birmingham, Ala.



BETHLEHEM
Bethlehem, Pa.



LYCOMING
Williamsport, Pa.



MONTELEONE
New Orleans, La.



SOUTHERN
Baltimore, Md.



BILTMORE
Los Angeles, Calif.



COPLEY-PLAZA
Boston, Mass.



LINCOLN
Lincoln, Neb.



WINDERMERE
Chicago, Ill.



OLYMPIC
Seattle, Wash.



SACRAMENTO
Sacramento, Calif.



PARK
Madison, Wis.



NORTHAMPTON
Northampton, Mass.



Luca Della Robbia (1400-1482), the first of the famous Florentine family, developed to a point of artistic perfection the intricate technique of enameling clay.

Borrowing fire from Della Robbia

MASTERS of Art they were. Masters of enameling on clay. Their gems of modeling covered with brilliant colors are unequaled today. And the gifted craftsmen of Venice and Limoges have left us superb proof of their ability to apply enamel to metal.

Step by step the art has become a science. Better metal, better glazes, better methods, and better heat—electric heat.

The glowing units of the electric fur-

nace give a heat that is perfectly uniform and constant, and there is no smoke to mar the glistening surface.

With electric heat as an ally, manufacturers offer us today hundreds of well-finished products. Even an army of men using Della Robbia's methods could not do this work at any cost.



General Electric engineers have applied electric heating to processes used for bathtubs and jewelry, for cast iron and bread, for tool steel and glue pots. The G-E booklet "Electric Heat in Industry" describes the application and possible value of electric heat to any manufacturing business.

570-22B

GENERAL ELECTRIC