

1910

Newport House : Annex and Cottages, Bar Harbor, Maine

Thomas P. Jones

Follow this and additional works at: <https://digitalcommons.library.umaine.edu/mainehistory>



Part of the [History Commons](#)

Repository Citation

Jones, Thomas P., "Newport House : Annex and Cottages, Bar Harbor, Maine" (1910). *Maine History Documents*. 113.
<https://digitalcommons.library.umaine.edu/mainehistory/113>

This Monograph is brought to you for free and open access by DigitalCommons@UMaine. It has been accepted for inclusion in Maine History Documents by an authorized administrator of DigitalCommons@UMaine. For more information, please contact um.library.technical.services@maine.edu.

Pamp
2434

The Newport House
Newport Annex and Cottages
Bar Harbor, Maine

THOMAS P. JONES, Proprietor

Open June 15th to October 1st

3-

Newport House

Annex and Cottages

Bar Harbor, Maine

THOMAS P. JONES, Proprietor





BAR HARBOR, MAINE

Bar Harbor, Maine, THE QUEEN OF WATERING PLACES

BAR HARBOR is the largest and most popular summer resort on the New England coast. It is the principal settlement on the island of Mount Desert, and is situated on a point of land which marks the dividing line between the Atlantic Ocean and Frenchmans bay. The island itself is too well known to require any lengthy description here. It is the largest on the coast, being about fifteen miles in diameter. On this comparatively small area there are fifteen mountain peaks and as many beautiful lakes; and it is the only resort where mountain, lake, and ocean scenery, combined, can be enjoyed.

A perfect network of fine roads covers the island, leading through beautiful valleys, and over picturesque mountains, and skirting the shore of ocean, lakes, and bay; and a very elaborate system of paths has been opened up, leading to all the points of interest. On one of the most beautiful and popular of these, the Shore Path, which follows the seashore from the steamboat landing eastward to Cromwell Harbor, is situated the Newport House, with its Annex and Cottages, the only hotel in Bar Harbor on the water front.

In addition to the many natural attractions Bar Harbor has the finest Golf Links in New England, and a Swimming Club with a large artificial pool of salt water heated to just the right temperature. Very fine Tennis Courts are also to be found at the Swimming Club and the Kebo Club. A new Arts Building has recently been erected by the summer residents where music of the highest order can be enjoyed. The Pot and Kettle club and the Mount Desert Reading Room are both successful organizations and have a large membership composed of the summer residents.

Newport House, Bar Harbor, Me.



Newport House

The Most Popular House at Bar Harbor and the Only Hotel on the
Water Front

THE NEWPORT HOUSE is the first of the hotels to greet the eye of the summer visitor as the ferryboat, which has transported him from the railroad terminus at Mount Desert Ferry, steams in toward the wharf at Bar Harbor. Situated on rising ground overlooking the steamboat landing, amid green, well kept lawns and flowering shrubs, the house with its wide, shady verandas, and its spacious, cool reception hall and office, offers a welcome haven to the traveller. From the comfortable rockers on the porches and the chamber windows overhead, the guest has an uninterrupted view of the blue expanse of Frenchmans Bay and of the wooded and rugged coast of the mainland beyond.

The interior of the Newport House is as attractive as its surroundings. Its spacious public rooms are handsomely but comfortably furnished, and are finished in light tints which rest the eye. The lofty and well ventilated dining room with its many low-silled windows commanding a delightful view across the lawn, of the blue waters of the bay, has comfortable accommodations for over two hundred guests. The large music room with its tapestried walls, cozy corners, and large open fire place, is an ideal resort for old or young; and the entrance hall, furnished with convenient writing desks, card and work tables, and an almost infinite assortment of easy chairs, rockers, and lounges, is cheerful and homelike



HARBOR VIEW FROM NEWPORT HOUSE

in the extreme. The bedrooms are large, pleasant, and comfortably furnished, the windows looking out on the bay, ocean and mountains.

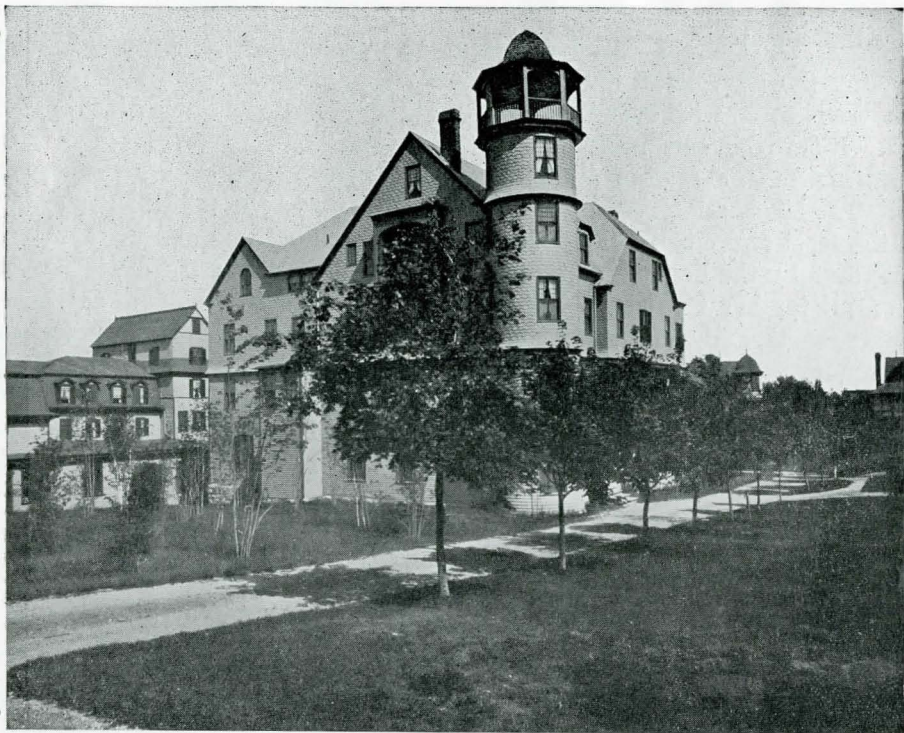
The house is fitted with every modern convenience, and the sanitary arrangements are of the best. It is within easy walk of the churches, post office, telegraph offices and banks.

The kitchen is in charge of a skillful and competent chef, with an efficient corps of assistants. The meals are served on the American plan and the table is furnished with the best that the local and city markets, and the neighboring farms and market gardens can supply, prepared by the best of cooks, and served by neat, well trained waitresses.

The proprietor has spared neither trouble nor expense to promote the comfort and welfare of his guests; and the fact that many of them have made the Newport House their summer home for years, is a conclusive proof that his efforts have been successful.

Situated on the shores of Frenchmans Bay, the most beautiful sheet of water on the eastern coast of this Continent, the windows and porches of the Newport House command a view that is unrivalled for beauty and charm. No other hotel in the village has such an outlook.

The Newport can be reached by the all-rail route from New York, Washington and Boston or by boat via Boston and Rockland.



THE NEWPORT ANNEX

The Newport Annex

THE NEWPORT ANNEX, a large four-storied apartment house, is situated in the rear of the Newport House surrounded by trim lawns and shrubbery. The rooms are large, airy and cheerful, handsomely and comfortably furnished and conveniently arranged in suites of one to three bedrooms with private parlors and bathrooms. The windows overlook The Field with its beautiful lawns and gardens and its handsome residences, and command a more distant view of the ocean and mountains.

The Annex is connected with the dining room and reception hall of the main house, by a short covered walk. But it has a separate entrance also from a driveway connecting with the Main street of the village; and a pleasant reception room, near the entrance, for the use of the guests and their visitors.

The house has electric lights, and an electric bell system, with its own corps of bell boys to attend to the wants of the guests. The suites have all the advantages and conveniences of a private establishment, with none of its cares. For family parties they have all the comforts of home. The suites are the most comfortable and attractive in the village and the terms moderate.

The proprietor of the Newport, MR. THOMAS P. JONES, who gives personal supervision to every detail of the House, has for years been connected with the De Gregoire, Mt. Desert Reading Room and the Swimming Pool, and later with the Country Club and the Pot and Kettle, all of Bar Harbor. Mr. Jones is much more widely known, however, through his management of the Harvard Club of Boston, and which under his superintendence has become one of the largest and most important clubs in this country.

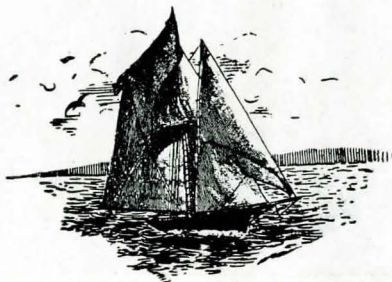


THE WHTINGTON ANNEX

The Whittington Annex

THE WHITTINGTON ANNEX on Newport avenue, is a large, two-story cottage, fitted throughout with every modern convenience. The knowledge acquired from years of experience in catering to the tastes and demands of the traveling public, has been applied in the construction and furnishing of this annex, and it can be truthfully and conscientiously said that nowhere else in town are more comfortable and convenient suites to be found.

The house is lighted by electricity and is connected with the hotel by electric bells. It has bathrooms with hot and cold water with every suite.





MAPLE COTTAGE

The Maple

IS A SMALL COTTAGE adjoining the Whittington Annex, and is very desirable for a small family. It has all the conveniences of the other houses and is well planned and nicely furnished. Parlor, two bedrooms and bath on first floor, and two bedrooms and bath on second floor.

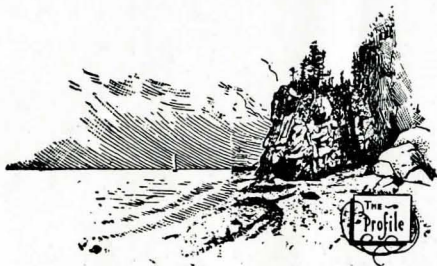




LILAC COTTAGE

The Lilac Cottage

THIS is a handsome, two-story cottage, situated on Newport avenue, between the Cadillac cottage and the Newport House. It has a suite of three rooms, parlor and bath on each floor and spacious halls. The cottage has all the modern improvements and is very desirable. It commands an unobstructed view of the harbor and bay.





HARBOR VIEW

Rates

With such extensive and varied accommodations, in cottages, annex and hotel, it would be difficult and misleading to attempt to publish any general rate of charges for room and board. Floor plans can be had on application in person or by mail, and rates furnished according to accommodations desired. Applications for rooms for the season should be made as early as possible. The house opens about the middle of June and no reservations can be cancelled after July tenth, unless paid for. The Newport House is homelike in its atmosphere and arrangements; but it can supply any kind of accommodations wanted, at moderate rates. Special weekly and monthly rates. Rates can be procured by addressing:

CHESTER A. WESCOTT, Manager,
Bar Harbor, Maine.



JORDAN POND

A Combination of Scenic Beauty and Historical Interest Unequaled in Our Country

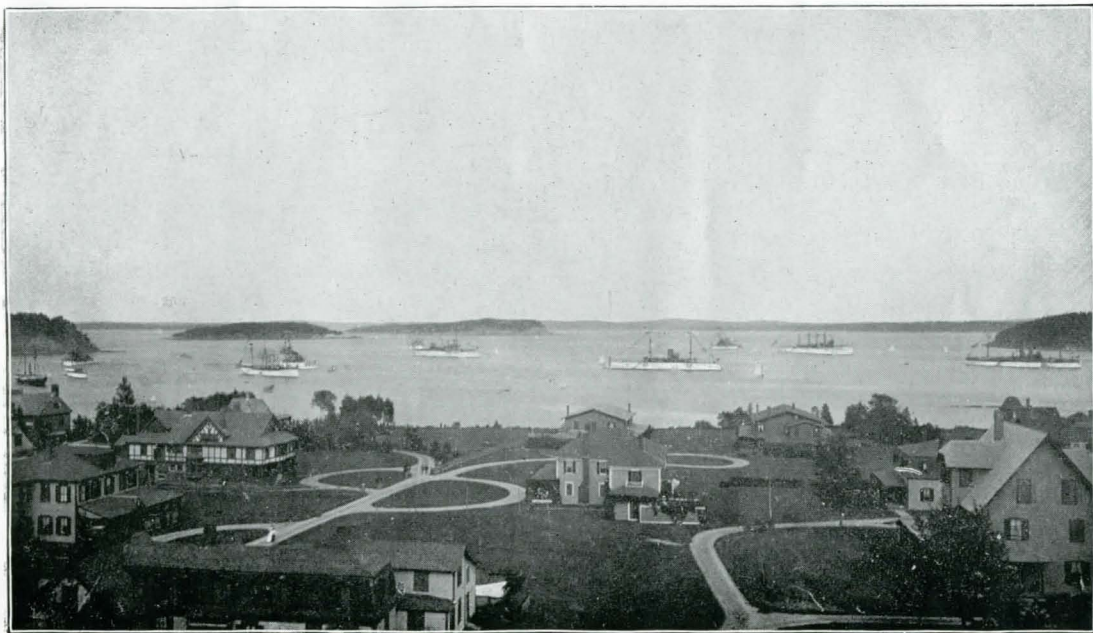
THE UNITED STATES GOVERNMENT recently created the Lafayette National Park on Mt. Desert Island. It is the only National Park east of the Mississippi River and comprises over five thousand acres. Superb in bold and varied landscape, it extends from the very borders of Bar Harbor village far across the island to the summer colonies upon its southern shore and includes, besides the mountain range, the watershed of Eagle Lake and Jordans Pond, in wild and unspoiled beauty of the mountainous center of the Island, with its rugged hills and valleys, its lakes and forests, and many exquisite features of natural beauty; is a high achievement the importance of which has been made manifest and has assured to future generations a combination of natural beauty that cannot be surpassed on any continent.

Added to the natural beauty of the Island are historical associations that make the National Park stand henceforth as a living monument to the friendship and common idealism of France and the United States.

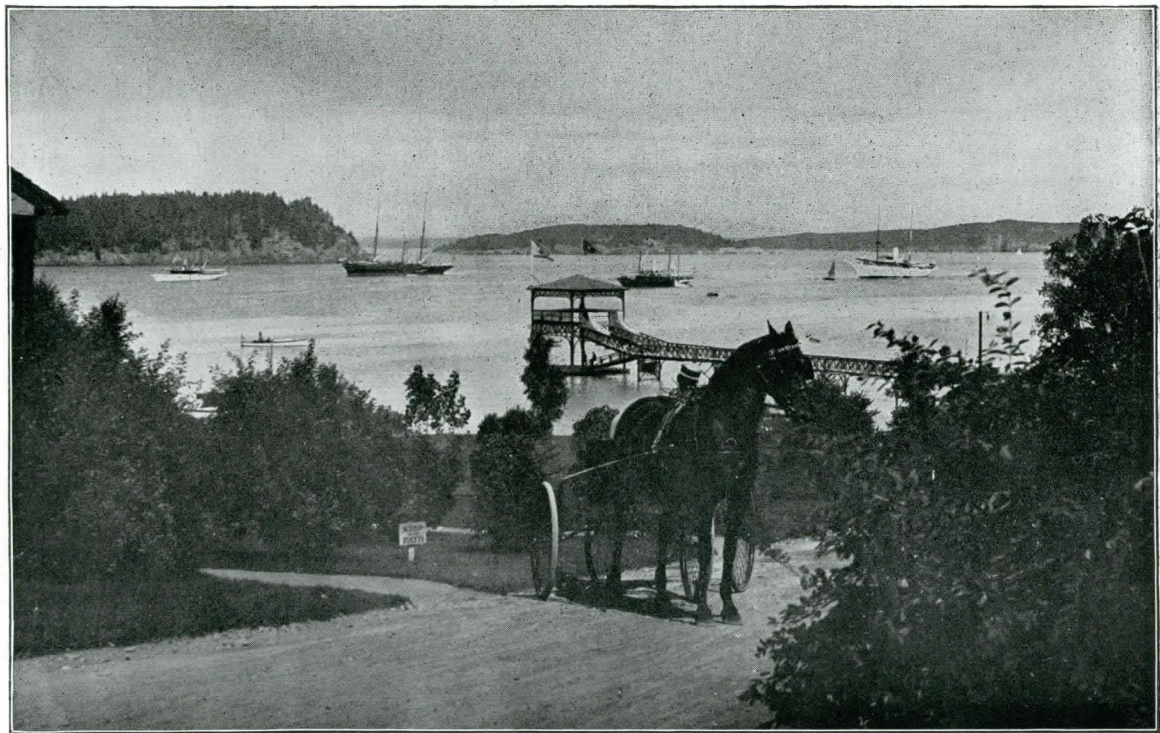
Hon. Franklin K. Lane, Secretary of the Interior, says: It is a true park area in the highest sense, totally different from any other that we have and capable of giving untold refreshment to the great town and city population of our country. It is the only national park—using the word in its descriptive sense—that fronts upon the sea, and it represents at its culminating point one of the oldest and most important recreation areas upon the Continent—the New England coast.



Eagle Lake



HARBOR VIEW FROM THE ANNEX



A VIEW OF THE HARBOR FROM THE LILAC COTTAGE