


1966

Records of the State of Maine Department of Sea and Shore Fisheries, Maine Sardine Industry, 1966

Maine Sardine Industry Research and Quality Control Laboratory

Follow this and additional works at: <https://digitalcommons.library.umaine.edu/fisheries>

 Part of the [Agricultural and Resource Economics Commons](#), and the [Aquaculture and Fisheries Commons](#)

Repository Citation

Maine Sardine Industry Research and Quality Control Laboratory, "Records of the State of Maine Department of Sea and Shore Fisheries, Maine Sardine Industry, 1966" (1966). *History of Maine Fisheries*. 131.
<https://digitalcommons.library.umaine.edu/fisheries/131>

This Report is brought to you for free and open access by DigitalCommons@UMaine. It has been accepted for inclusion in History of Maine Fisheries by an authorized administrator of DigitalCommons@UMaine. For more information, please contact um.library.technical.services@maine.edu.

MAINE SARDINE INDUSTRY
RESEARCH AND QUALITY CONTROL LABORATORY
470 North Main Street
Brewer, Maine

RECEIVED

DEC 7 1966

OIL PACKGRADE SUMMARYQuality Status of the Pack - October 31 - December 3, 1966

<u>Grade Status</u>	<u>KEYOPEN</u>			<u>KEYLESS</u>		
	<u>1966</u>	<u>1965</u>	<u>1964</u>	<u>1966</u>	<u>1965</u>	<u>1964</u>
Fancy	24.6	8.8	27.1	3.7	14.1	13.4
Extra Standard	65.3	69.8	50.7	76.7	76.2	72.9
Standard	10.1	21.4	20.0	19.2	9.7	13.7
Below Standard	<u>0</u>	<u>0</u>	<u>2.2</u>	<u>.4</u>	<u>0</u>	<u>0</u>
Totals	100.0 %	100.0 %	100.0 %	100.0 %	100.0 %	100.0 %

	<u>1966</u>	<u>1965</u>	<u>1964</u>
Number of plants participating:	15	9	17
Number of plants having all grades Standard or better:	14	9	16
Total cases graded:	19,112		
Total cases graded 1965 (same period):	19,707		
Total cases graded 1964 (same period):	49,796		

Data shown for 1964 and 1965 is for the same general comparable periods.

MAINE SARDINE INDUSTRY

STYLE OF PACK: OIL
CAN SIZE: 1/4

SIZE SUMMARY

The 19,112 cases packed during the period of October 31 - December 3, 1966, inclusive are shown below as they were packed by size of fish:

Average No. of Fish	KEYOPEN		KEYLESS		KEYOPEN & KEYLESS	
	Cases	Totals	Cases	Totals	Cases	Totals
4.0	565		7,862		8,427	
4.1			424		424	
4.2			500		500	
Total 4.0 to 4.9 inc.		565		8,786		9,351
5.0	2,017		2,252		4,269	
5.1			841		841	
5.2			149		149	
5.4	241		35		276	
5.6			230		230	
Total 5.0 to 5.9 inc.		2,258		3,407		5,665
6.2			8		8	
Total 6.0 to 6.9 inc.				8		8
8.0			197		197	
8.3	331				331	
8.9			103		103	
Total 8.0 to 8.9 inc.		331		300		631
9.2	74				74	
9.5	865				865	
9.6	300		370		370	
Total 9.0 to 9.9 inc.		939		370		1,309
10.2	82				82	
10.5	216				216	
Total 10.0 to 10.9 inc.		298				298
11.2	239				239	
11.3			304		304	
11.4	260		66		326	
11.9	357				357	
Total 11.0 to 11.9 inc.		856		370		1,226
12.0	251				251	
12.1	267				267	
12.9	106				106	
Total 12.0 to 12.9 inc.		624				624
					<u>TOTAL CASES</u>	<u>19,112</u>

MAINE SARDINE INDUSTRY

COMPARISON OF INDIVIDUAL PLANT PERFORMANCES

DATA ARRANGED IN DESCENDING ORDER OF
AVERAGE GRADE SCORE

STYLE OF PACK - OIL
CAN SIZE - 1/4
October 31 - December 3, 1966

The quality status for the periods production for each of the 15 plants packing this period is shown below:

*	Number of Lots Graded	Av. Score	CASE DISTRIBUTION			
			Fancy	Ex. Std.	Standard	B. Std.
1	2	9 265	192	194		
2	4	9 215	291	381		
3	5	9 004	1 410	318		
4	4	8 950		1 599		
5	13	8 694	48	2 320		
6	10	8 688		2 022	234	
7	7	8 600		996		
8	4	8 500		565		
9	2	8 450		347		
10	6	8 208		333	394	
11	3	8 173		365	719	
12	5	8 160		334	230	
13	13	8 150		855	474	
14	17	8 110		2 633	603	50
15	6	8 107		732	473	
TOTALS						
15	101		1941	13994	3127	50

*The line that represents your plant's production for the period can be determined from the preceding report.

MAINE SARDINE INDUSTRY
RESEARCH AND QUALITY CONTROL LABORATORY
470 North Main Street
Brewer, Maine

RECEIVED

DEC 7 1966

MUSTARD PACKGRADE SUMMARYQuality Status of the Pack - October 31 - December 3, 1966

<u>Grade Status</u>	<u>KEYOPEN</u>			<u>KEYLESS</u>		
	<u>1966</u>	<u>1965</u>	<u>1964</u>	<u>1966</u>	<u>1965</u>	<u>1964</u>
Fancy	0	0	58.3	0	0	17.2
Extra Standard	100.0	0	41.7	72.9	0	23.3
Standard	0	0	0	27.1	0	59.5
Below Standard	<u>0</u>	0	<u>0</u>	<u>0</u>	0	<u>0</u>
Totals	100.0 %	0	100.0 %	100.0 %	0	100.0 %

Number of plants participating:

	<u>1966</u>	<u>1965</u>	<u>1964</u>
Number of plants participating:	5	0	3
Number of plants having all grades Standard or better:	5	0	3
Total cases graded:	2,992		
Total cases graded 1965 (same period):	0		
Total cases graded 1964 (same period):	1,815		

Number of plants having all grades Standard or better:

Total cases graded: 2,992

Total cases graded 1965 (same period): 0

Total cases graded 1964 (same period): 1,815

Data shown for 1964 and 1965 is for the same general comparable periods.

MAINE SARDINE INDUSTRY

STYLE OF PACK: MUSTARD
CAN SIZE: 1/4

SIZE SUMMARY

The 2,992 cases packed during the period of October 31 - December 3, 1966, inclusive are shown below as they were packed by size of fish:

Average No. of Fish	<u>KEYOPEN</u>		<u>KEYLESS</u>		<u>KEYOPEN & KEYLESS</u>	
	<u>Cases</u>	<u>Totals</u>	<u>Cases</u>	<u>Totals</u>	<u>Cases</u>	<u>Totals</u>
4.0			<u>905</u>		<u>905</u>	
Total 4.0 to 4.9 inc.				905		905
5.0	595		582		1,177	
5.3			256		256	
5.5	<u>165</u>		—		<u>165</u>	
Total 5.0 to 5.9 inc.		760		838		1,598
8.2	128				128	
8.4	—		<u>248</u>		<u>248</u>	
Total 8.0 to .8.9 inc.		128		248		376
16.0 or more	<u>113</u>				<u>113</u>	
Total 16.0 or more		113				<u>113</u>
					<u>TOTAL CASES</u>	<u>= 2,992</u>

MAINE SARDINE INDUSTRY

COMPARISON OF INDIVIDUAL PLANT PERFORMANCES

DATA ARRANGED IN DESCENDING ORDER OF
AVERAGE GRADE SCORE

STYLE OF PACK - MUSTARD

CAN SIZE - 1/4

October 31 - December 3, 1966

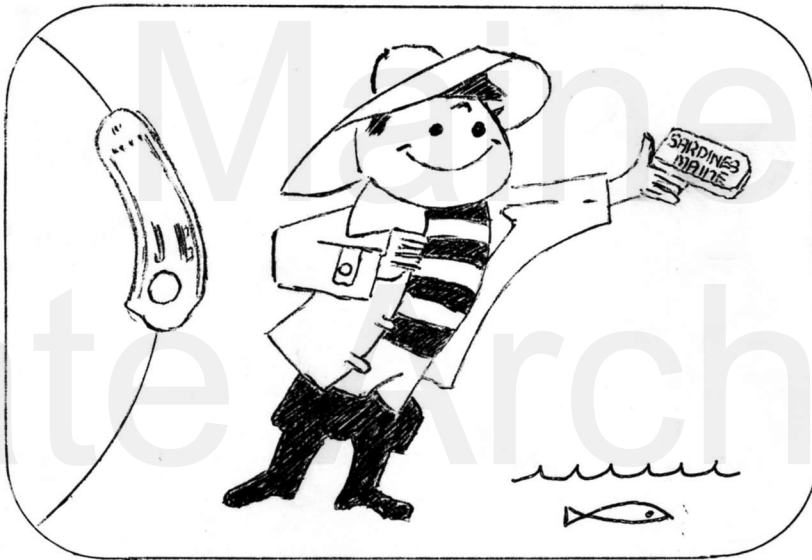
The quality status for the period's production for each of the 5 plants packing this period is shown below:

*	Number of Lots Graded	Av. Score	CASE DISTRIBUTION	
			Ex. Std.	Standard
1	3	84 10	595	
2	4	81 85	549	248
3	1	81 80	905	
4	2	80 20	404	
5	1	77 60		291
TOTALS				
5	11		2453	539

*The line that represents your plant's production for the period can be determined from the preceding report.

1966

Annual Report



— FISH — MAINE SARDINE INDUSTRY — FISH —

RESEARCH AND QUALITY CONTROL LABORATORY

470 NORTH MAIN STREET BREWER MAINE 04412

This 1966 Annual Report reflects the past season's Quality Control data accumulated from January 1 to December 31, 1966, at the Industry's Quality Control Laboratory at Brewer, Maine.

Additional information which has been compiled at the Grading Laboratory from 1956 to the present is available at the Industry's request.

COMPILED BY:

Maine Sardine Industry
Research and Quality Control Laboratory
Permanent Staff - 1966 - 1967

John S. Macdonald, Grading Supervisor
Department of Agriculture

Gordon G. Smith, Grader II
Department of Agriculture

Gertrude R. Lamson, Grader II
Department of Agriculture

Dolores C. Moore, Secretary
Maine Sardine Council

Joseph Godin, Custodian
Maine Sardine Council

- TABLE OF CONTENTS -

SECTION I

Analysis of 1966 Grading Season

A. - Comparison of Average Values

1. 1/4 Oil Pack - 1966 Season
2. 1/4 Oil Pack - Plant Quality Comparison - 1966 Season
3. 1/4 Mustard Pack - 1966 Season
4. 1/4 Mustard Pack - Plant Quality Comparison - 1966 Season
5. 1/4 Tomato Pack - 1966 Season
6. 3/4 Mustard Pack - 1966 Season

B. - Area Summary

- (a) Cases Packed by Areas (Map Form)
- (b) Cases Packed by Areas and Method of Catch
- (c) Cases Packed by Areas and Size of Fish

C. - Size of Fish by Areas

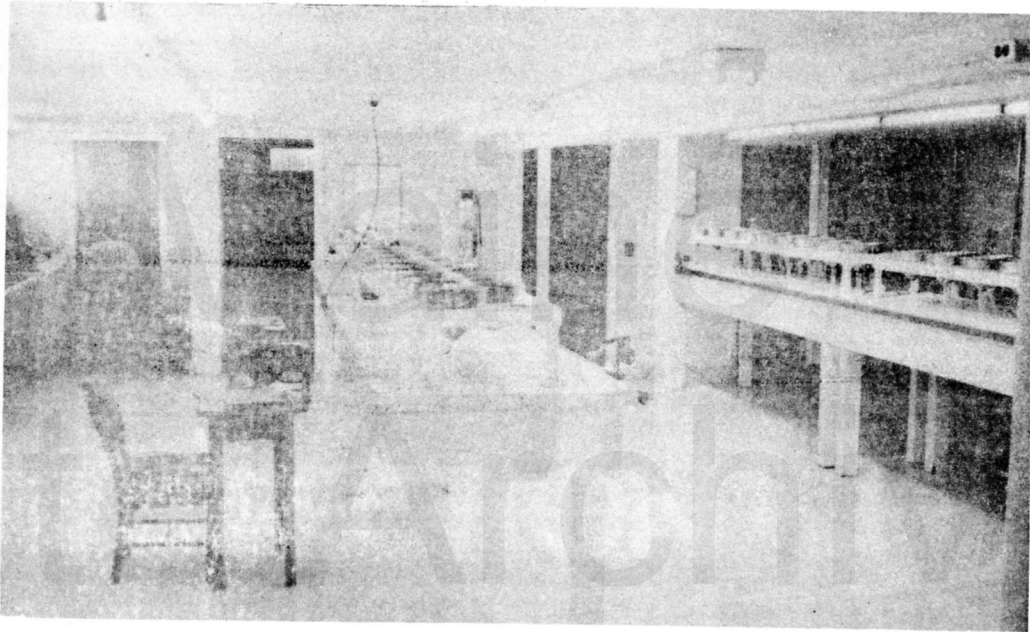
- (a) 1/4 Oil Pack - 1966 Season
- (b) 1/4 Mustard Pack - 1966 Season

SECTION II

Chemical Laboratory Reports for 1966 Pack

1. Industry Salt Levels
2. Individual Plant Salt Levels
3. Salt Levels - Industry Average by Size of Fish
4. Salt Levels in Relation to Holding Time

SECTION 1



ANALYSIS OF GRADING SEASON

A - COMPARISON OF AVERAGE VALUES

The following reports reflect Quality Levels on an Industry Basis and for individual companies.

In so far as records of this type go back to 1956 information is being held on file so a continuity can be established as the Industry wishes.

1/4 Tomato grades have been established as mandatory by the Commissioner of Agriculture as of March 20, 1967, so will be reported in accordance with 1/4 Oil, 1/4 Mustard and 3/4 Mustard reports.

MAINE SARDINE INDUSTRY
RESEARCH AND QUALITY CONTROL LABORATORY

1966 1/4 OIL PACK KO & KL

	INDUSTRY
SAMPLE CANS	53,735
CASES	1,009,440

GRADE DISTRIBUTION

SAMPLE CANS		CASES	
	INDUSTRY		INDUSTRY
FANCY	39.86 %	FANCY	19.71 %
EX. STD.	39.35 %	EX. STD.	64.60 %
STANDARD	18.67 %	STANDARD	15.02 %
B. STD.	2.12 %	B. STD.	.67 %

AVERAGE VALUES

	INDUSTRY
NET WEIGHT	4.48
COUNT OF FISH	6.31
DRAINED WEIGHT	3.82
I DEFECTS	32.54
II ODOR	14.59
III TASTE	29.02
IV TEXTURE	9.56
TOTAL	85.71
Ventral Breaks	.76
TOTAL SCORE	84.95
WORKMANSHIP DEFECTS	
1. Protruding Guts, Blood, Fins, Loose Skin, Tails, Head Parts	1.94
2. & 3. Flesh Cracks, Gill & Backbones	.78
4. Sluffed & Mutilated Skin	.38
5. Improper Head & Tail Cuts	.97
6. Improper Dovetail	3.13
7. Telescoping	.23
8. General Appearance	2.62
9. Water	.85
Oil	1.56
Sediment	.00+
TOTAL DEDUCTIONS	12.46
TOTAL WATER	4.84
TOTAL OIL	12.79

1966 1/4 OIL PACK KO & KL

INFLUENCE OF LIMITING FACTORS

	INDUSTRY
Extra Standard No. of Cans Extra Standard	21,146
These cans were graded Extra Standard by the following causes:	
1. - SCORE ONLY	58.15 %
2. - Limiting Factors	
DEFECT #1, Protruding Guts, Blood, Fins, Loose Skin, Tails, Head Parts	.30 %
DEFECT #4, Sluffed, Slipped, Mutilated Skins	.37 %
DEFECT #8, Top Appearance	18.87 %
DEFECT #9, Water, Oil, Sediment	12.72 %
*OTHER CAUSES	<u>9.59 %</u>
	100.00 %
Standard No. of Cans Standard	10,033
These cans were graded Standard by the following causes:	
1. - SCORE ONLY	23.40 %
2. - Limiting Factors	
Flipper or Swell	3.62 %
Drained Weight	12.92 %
Odor	.00 %
Taste	.47 %
DEFECT #4, Sluffed Skin	2.01 %
DEFECT #7, Telescoping	14.39 %
DEFECT #8, Top Appearance	3.08 %
Salt	19.27 %
*OTHER CAUSES	<u>20.84 %</u>
	100.00 %
Sub Standard No. of Cans Sub Standard	1,138
1. - SCORE ONLY	99.74 %
DEFECT #8, Top Appearance	<u>.26 %</u>
	100.00 %

*This category is composed for the greatest part of cans limited by combinations of two or more defects.

MAINE SARDINE INDUSTRY
RESEARCH AND QUALITY CONTROL LABORATORY
470 North Main Street
Brewer, Maine

April 1, 1967

1966 - 1/4 OIL PACK - PLANT QUALITY COMPARISON

The lot grade results of the 1966 season have been summarized to show the comparative plant performance as well as the industry results. The following arrangement is by average can score of all cans graded and included KO and KL cans, oil pack only. The column on the extreme right shows the 1965 relative plant performance for comparative purposes.

Plant Code Number	Percent of Cases in Each Grade				Average Can Score	1965 Position
	Fancy	Ex. Std.	Standard	B. Std.		
1	51.65	47.66	.69	.00	92.62	--
2	59.63	36.64	3.73	.00	92.24	1
3	59.18	39.31	1.51	.00	91.50	6
4	41.83	56.32	1.84	.01	90.59	4
5	38.57	59.71	1.72	.00	90.08	3
6	22.09	62.12	15.67	.12	88.36	11
7	15.60	64.54	19.86	.00	88.27	5
8	31.53	58.74	9.73	.00	87.50	10
9	9.28	75.87	14.85	.00	87.35	15
10	23.63	59.08	16.94	.35	87.18	13
11	19.07	73.76	7.17	.00	87.00	7
12	34.92	59.44	5.30	.34	86.38	9
13	.00	73.52	26.48	.00	86.05	12
14	15.58	79.27	4.39	.76	85.62	19
15	.80	57.31	41.61	.28	84.44	18
16	25.17	67.56	5.86	1.41	84.40	20
17	11.13	70.23	16.61	2.03	84.07	16
18	.58	82.23	17.08	.11	83.68	17
19	4.66	81.93	12.37	1.04	81.60	22
20	9.43	67.25	21.50	1.82	80.80	14
21	.00	63.36	35.19	1.45	80.65	21
22	11.17	67.67	19.20	1.96	80.20	8
23	6.16	59.15	34.69	.00	80.19	--

All Plants	19.71	64.60	15.02	.67	84.95	
---------------	-------	-------	-------	-----	-------	--

MAINE SARDINE INDUSTRY
RESEARCH AND QUALITY CONTROL LABORATORY

1966 1/4 MUSTARD PACK KO & KL

	INDUSTRY
SAMPLE CANS	5,835
CASES	116,416

GRADE DISTRIBUTION

SAMPLE CANS		CASES	
	INDUSTRY		INDUSTRY
FANCY	50.49 %	FANCY	19.34 %
EX. STD.	34.96 %	EX. STD.	64.13 %
STANDARD	13.02 %	STANDARD	16.12 %
B. STD.	1.53 %	B. STD.	.41 %

AVERAGE VALUES

	INDUSTRY
NET WEIGHT	4.70
DRAINED WEIGHT	3.57
WEIGHT OF SAUCE	1.13
COUNT OF FISH	6.48
I Mustard Sauce Color	13.20
II Mustard Sauce Texture	12.86
III Absence of Defects	20.93
IV Taste - Odor	29.54
V Texture	9.68
TOTAL	86.21
Ventral Breaks	.75
TOTAL SCORE	85.46
DEFECTS: FLOATING DEFECTS	.56
1. Protruding Guts, Blood, Fins, Loose Skin, Tails, Head Parts	.93
2. & 3. Flesh Cracks, Gill & Backbones	1.00
4. Sluffed & Mutilated Skin	.17
5. Improper Head & Tail Cuts	.89
6. Improper Dovetail	3.06
7. Telescoping	.12
8a. General Appearance-Before Washing	2.34
TOTAL DEDUCTIONS	9.07
8b. General Appearance-After Washing	2.23

1966 1/4 MUSTARD PACK KO & KL

INFLUENCE OF LIMITING FACTORS

	INDUSTRY
Extra Standard No. of Cans Extra Standard	2,040
These cans were graded Extra Standard by the following causes:	
1. - SCORE ONLY	69.75 %
2. - Limiting Factors	
DEFECT #1, Protruding Guts, Blood, Fins, Loose Skin, Tails, Head Parts	.10 %
DEFECT #4, Sluffed, Slipped Mutilated Skins	.10 %
DEFECT #8, Top Appearance-Before Washing	29.80 %
*OTHER CAUSES	<u>.25 %</u>
	100.00 %
Standard No. of Cans Standard	760
These cans were graded Standard by the following causes:	
1. - SCORE ONLY	26.98 %
2. - Limiting Factors	
Flipper or Swell	11.05 %
Drained Weight	16.18 %
Weight of Sauce	15.00 %
DEFECT #4, Sluffed Skin	.53 %
Taste	4.08 %
DEFECT #7, Telescoping	16.45 %
DEFECT #8, Top Appearance-Before Washing	2.76 %
DEFECT #8, Top Appearance-After Washing	.92 %
*OTHER CAUSES	<u>6.05 %</u>
	100.00 %
Sub Standard No. of Cans Sub Standard	89
1. - SCORE ONLY	100.00 %

*This category is composed for the greatest part of cans limited by combinations of two or more defects.

MAINE SARDINE INDUSTRY
RESEARCH AND QUALITY CONTROL LABORATORY
470 North Main Street
Brewer, Maine

April 1, 1967

1966 - 1/4 MUSTARD PACK - PLANT QUALITY COMPARISON

The lot grade results of the 1966 season have been summarized to show the comparative plant performance as well as the Industry results. The following arrangement is by average can score of all cans graded and includes KO and KL cans, mustard pack only. The column on the extreme right shows the 1965 relative plant performance for comparative purposes.

Plant Code Number	Percent of Cases in Each Grade				Average Can Score	1965 Position
	Fancy	Ex. Std.	Standard	B. Std.		
1	4.72	95.28	.00	.00	90.29	2
2	31.35	68.65	.00	.00	90.11	1
3	45.92	47.60	6.48	.00	88.49	5
4	31.51	53.16	15.33	.00	88.44	4
5	17.14	82.86	.00	.00	88.24	6
6	26.44	61.15	12.41	.00	87.40	10
7	23.38	58.19	18.43	.00	86.25	11
8	.00	100.00	.00	.00	86.03	12
9	.00	95.97	4.03	.00	85.97	14
10	8.74	63.80	27.46	.00	85.85	16
11	35.77	60.12	4.11	.00	85.65	13
12	.00	64.39	35.61	.00	85.63	7
13	.00	75.89	24.11	.00	85.47	18
14	15.44	78.96	5.60	.00	84.77	9
15	.00	67.29	32.71	.00	84.40	19
16	.00	88.56	11.44	.00	84.18	17
17	11.77	64.30	23.93	.00	82.89	3
18	.00	.00	100.00	.00	79.93	20
19	.00	33.16	66.84	.00	79.40	8
20	19.01	66.61	8.81	5.57	78.85	15
<hr/>						
All Plants	19.34 %	64.13 %	16.12 %	.41 %	85.46	

MAINE SARDINE INDUSTRY
RESEARCH AND QUALITY CONTROL LABORATORY

1966 1/4 TOMATO PACK KO & KL

	INDUSTRY
SAMPLE CANS	1,375
CASES	22,231

GRADE DISTRIBUTION

SAMPLE CANS		CASES	
	INDUSTRY		INDUSTRY
FANCY	35.85 %	FANCY	16.97 %
EX. STD.	32.00 %	EX. STD.	62.64 %
STANDARD	25.82 %	STANDARD	19.50 %
B. STD.	6.33 %	B. STD.	.89 %

AVERAGE VALUES

		INDUSTRY
NET WEIGHT		4.63
DRAINED WEIGHT		3.74
WEIGHT OF SAUCE		.89
COUNT OF FISH		5.98
I	Tomato Sauce Color	12.88
II	Tomato Sauce Texture	12.23
III	Absence of Defects	19.77
IV	Taste - Odor	28.89
V	Texture	9.67
TOTAL		83.44
Ventral Breaks		1.66
TOTAL SCORE		81.78
DEFECTS: FLOATING DEFECTS		.43
1.	Protruding Guts, Blood, Fins, Loose Skin, Tails, Head Parts	1.20
2. & 3.	Flesh Cracks, Gill & Backbone	1.26
4.	Sluffed & Mutilated Skin	.27
5.	Improper Head & Tail Cuts	1.01
6.	Improper Dovetail	3.16
7.	Telescoping	.14
8a.	General Appearance-Before Washing	2.79
TOTAL DEDUCTIONS		10.26
8b.	General Appearance-After Washing	2.74

1966 1/4 TOMATO PACK KO & KL

INFLUENCE OF LIMITING FACTORS

	INDUSTRY
Extra Standard No. of Cans Extra Standard	506
These cans were graded Extra Standard by the following causes:	
1. - SCORE ONLY	67.84 %
2. - Limiting Factors	
DEFECT #1, Protruding Guts, Blood, Fins, Loose Skin, Tails, Head Parts	.00 %
DEFECT #4, Sluffed, Slipped Mutilated Skins	.00 %
DEFECT #8, Top Appearance-Before Washing	32.16 %
*OTHER CAUSES	<u>.00 %</u>
	100.00 %
Standard No. of Cans Standard	347
These cans were graded Standard by the following causes:	
1. - SCORE ONLY	26.30 %
2. - Limiting Factors	
Flipper or Swell	1.44 %
Drained Weight	2.60 %
Weight of Sauce	27.75 %
DEFECT #4, Sluffed Skin	.58 %
Taste	16.76 %
DEFECT #7, Telescoping	7.80 %
DEFECT #8, Top Appearance-Before Washing	3.76 %
DEFECT #8, Top Appearance-After Washing	1.16 %
*OTHER CAUSES	<u>11.85 %</u>
	100.00 %
Sub Standard No. of Cans Sub Standard	87
1. - SCORE ONLY	100.00 %

*This category is composed for the greatest part of cans limited by combinations of two or more defects.

MAINE SARDINE INDUSTRY
RESEARCH AND QUALITY CONTROL LABORATORY
1966 3/4 MUSTARD PACK KO & KL

	INDUSTRY
SAMPLE CANS	1,370
CASES	10,113 (48's)

GRADE DISTRIBUTION

SAMPLE CANS		CASES	
	INDUSTRY		INDUSTRY
FANCY	27.08 %	FANCY	1.71 %
EX. STD.	43.28 %	EX. STD.	45.90 %
STANDARD	27.96 %	STANDARD	52.04 %
B. STD.	1.68 %	B. STD.	.35 %

AVERAGE VALUES

	INDUSTRY
NET WEIGHT	12.29
DRAINED WEIGHT	9.35
WEIGHT OF SAUCE	2.94
COUNT OF FISH	7.23
I Mustard Sauce Color	12.61
II Mustard Sauce Texture	12.29
III Absence of Defects	17.68
IV Taste - Odor	29.55
V Texture	9.28
TOTAL	81.41
Ventral Breaks	.05
TOTAL SCORE	81.36
DEFECTS: FLOATING DEFECTS	1.02
1. Protruding Guts, Blood, Fins Loose Skin, Tails, Head Parts	1.81
2. & 3. Flesh Cracks, Gill & Backbones	1.27
4. Sluffed and Mutilated Skin	.69
5. Improper Head & Tail Cuts	1.41
6. Improper Dovetail	3.34
7. Telescoping	.02
8a. General Appearance-Before Washing	2.75
9. Excess	.08
TOTAL DEDUCTIONS	12.39
8b. General Appearance-After Washing	2.59

1966 3/4 MUSTARD PACK KO & KL
INFLUENCE OF LIMITING FACTORS

	INDUSTRY
Extra Standard No. of Cans Extra Standard	593
These cans were graded Extra Standard by the following causes:	
1. - SCORE ONLY	85.16 %
2. - Limiting Factors	
DEFECT #1, Protruding Guts, Blood, Fins, Loose Skin, Tails, Head Parts	.00 %
DEFECT #4, Sluffed, Slipped Mutilated Skins	.17 %
DEFECT #8, Top Appearance-Before Washing	14.50 %
*OTHER CAUSES	.17 %
	<u>100.00 %</u>
Standard No. of Cans Standard	383
These cans were graded Standard by the following causes:	
1. - SCORE ONLY	28.72 %
2. - Limiting Factors	
Weight of Sauce	14.62 %
Drained Weight	48.56 %
DEFECT #4, Sluffed Skin	1.57 %
DEFECT #7, Telescoping	.00 %
DEFECT #8, Top Appearance-Before Washing	1.57 %
DEFECT #8, Top Appearance-After Washing	.00 %
*OTHER CAUSES	4.96 %
	<u>100.00 %</u>
Sub Standard No. of Cans Sub Standard	23
1. - SCORE ONLY	100.00 %

*This category is composed for the greatest part of cans limited by combinations of two or more defects.

B - AREA SUMMARY

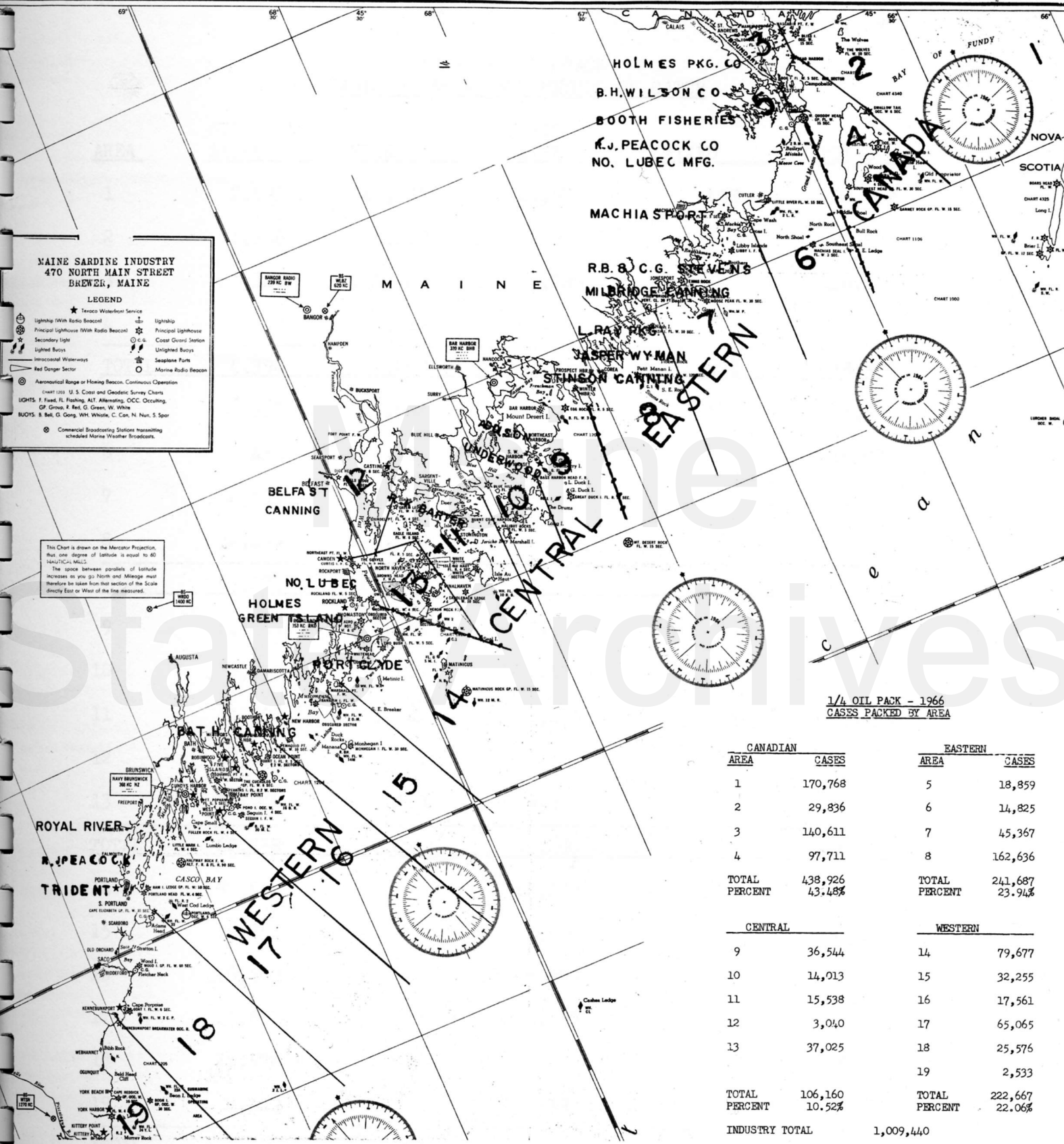
The following reports reflect the 1966 pack in
respect to Areas involved and method of catch used.

MAINE SARDINE INDUSTRY
470 NORTH MAIN STREET
BREWSTER, MAINE

LEGEND

- ★ Tides Waterfront Service
- Lightship (With Radio Beacon)
- Principal Lighthouse (With Radio Beacon)
- Secondary Light
- Lighted Buoy
- Unlighted Waterways
- Red Danger Sector
- Aeronautical Range or Hoisting Beacon, Continuous Operation
- CHART 1213 U. S. Coast and Geodetic Survey Charts
- LIGHTS: F. Fixed, Fl. Flashing, AL. Alternating, OCC. Occulting, GP. Gong, R. Red, G. Green, W. White
- BUOYS: B. Bell, G. Gong, WH. Whistle, C. Can, N. Nun, S. Spar
- Commercial Broadcasting Stations transmitting scheduled Marine Weather Broadcasts
- Lightship
- Principal Lighthouse
- Coast Guard Station
- Lighted Buoy
- Seaplane Pontoon
- Marine Radio Beacon

This Chart is shown on the Mercator Projection, but one degree of latitude is equal to 60 NAUTICAL MILES. The space between parallels of latitude increases as you go North and Mileage must therefore be taken from that section of the Scale directly East or West of the line measured.



1/4 OIL PACK - 1966
CASES PACKED BY AREA

CANADIAN		EASTERN	
AREA	CASES	AREA	CASES
1	170,768	5	18,859
2	29,836	6	14,825
3	140,611	7	45,367
4	97,711	8	162,636
TOTAL	438,926	TOTAL	241,687
PERCENT	43.48%	PERCENT	23.94%
CENTRAL		WESTERN	
9	36,544	14	79,677
10	14,013	15	32,255
11	15,538	16	17,561
12	3,040	17	65,065
13	37,025	18	25,576
		19	2,533
TOTAL	106,160	TOTAL	222,667
PERCENT	10.52%	PERCENT	22.06%
INDUSTRY TOTAL		1,009,440	

MAINE SARDINE INDUSTRY
 RESEARCH AND QUALITY CONTROL LABORATORY
 470 North Main Street
 Brewer, Maine

April 1, 1967

1966 1/4 OIL PACK
CASES BY AREAS AND METHOD OF CATCH

<u>AREA</u>	<u>STOP SEINE</u>	<u>WEIR</u>	<u>PURSE SEINE</u>	<u>MIXED</u>	<u>TOTAL</u>
1	2,595	41,159	126,576	438	170,768
2	1,106	26,407	2,323		29,836
3	146	139,180	1,285		140,611
4	543	35,514	61,654		97,711
<u>TOTAL</u>	<u>4,390</u>	<u>242,260</u>	<u>191,838</u>	<u>438</u>	<u>438,926</u>
5	1,957	16,902			18,859
6	431	14,394			14,825
7	34,654	8,501	1,996	216	45,367
8	32,139	129,020	369	1,108	162,636
<u>TOTAL</u>	<u>69,181</u>	<u>168,817</u>	<u>2,365</u>	<u>1,324</u>	<u>241,687</u>
9	24,649	3,188	8,707		36,544
10	7,215	183	6,615		14,013
11	11,490	1,624	2,424		15,538
12	2,070	616	354		3,040
13	16,914	810	19,301		37,025
<u>TOTAL</u>	<u>62,338</u>	<u>6,421</u>	<u>37,401</u>		<u>106,160</u>
14	37,450		42,227		79,677
15	19,355		12,900		32,255
16	10,569		6,992		17,561
17	45,801	707	18,557		65,065
18	25,576				25,576
19	2,140		393		2,533
<u>TOTAL</u>	<u>140,891</u>	<u>707</u>	<u>81,069</u>		<u>222,667</u>
FINAL TOTAL	276,800	418,205	312,673	1,762	1,009,440

MAINE SARDINE INDUSTRY
RESEARCH AND QUALITY CONTROL LABORATORY
470 North Main Street
Brewer, Maine

April 1, 1967

1966 1/4 OIL PACK
CASES BY AREA AND SIZE OF FISH

AREA	FISH SIZES						TOTALS
	4's	5's	6's	7-9's	10-13's	14's+	
1	12,630	91,900	33,553	29,749	2,936		170,768
2	4,629	21,031	2,366	1,316	494		29,836
3	13,966	102,961	9,678	12,238	1,625	143	140,611
4	38,780	46,906	6,207	3,918	1,231	669	97,711
TOTALS	70,005	262,798	51,804	47,221	6,286	812	438,926
5	1,769	13,482	378	1,562	1,668		18,859
6	1,253	10,340	1,017	1,872	343		14,825
7	11,477	12,741	3,769	8,102	2,074	7,204	45,367
8	80,479	47,866	3,091	23,261	6,830	1,109	162,636
TOTALS	94,978	84,429	8,255	34,797	10,915	8,313	241,687
9	12,720	10,830	1,134	7,677	3,254	929	36,544
10	6,371	2,328	44	3,618	1,247	405	14,013
11	337	3,087	763	7,422	3,423	506	15,538
12		2,080		644		316	3,040
13		8,632	2,686	6,449	16,536	2,722	37,025
TOTALS	19,428	26,957	4,627	25,810	24,460	4,878	106,160
14	39,712	9,554	3,051	21,884	5,007	469	79,677
15	5,211	6,048	4,871	11,506	3,983	636	32,255
16	3,763	7,109	2,014	3,562	1,113		17,561
17	24,227	28,933	4,429	2,808	4,668		65,065
18	11,307	4,740	9,276	48	205		25,576
19	2,533						2,533
TOTALS	86,753	56,384	23,641	39,808	14,976	1,105	222,667
FINAL TOTAL	271,164	430,568	88,327	147,636	56,637	15,108	1,009,440

C - SIZE OF FISH BY AREAS

The following reports reflect the size of fish packed by cases for the 1966 season. The chart forms show an overall picture and are followed by a detailed breakdown.

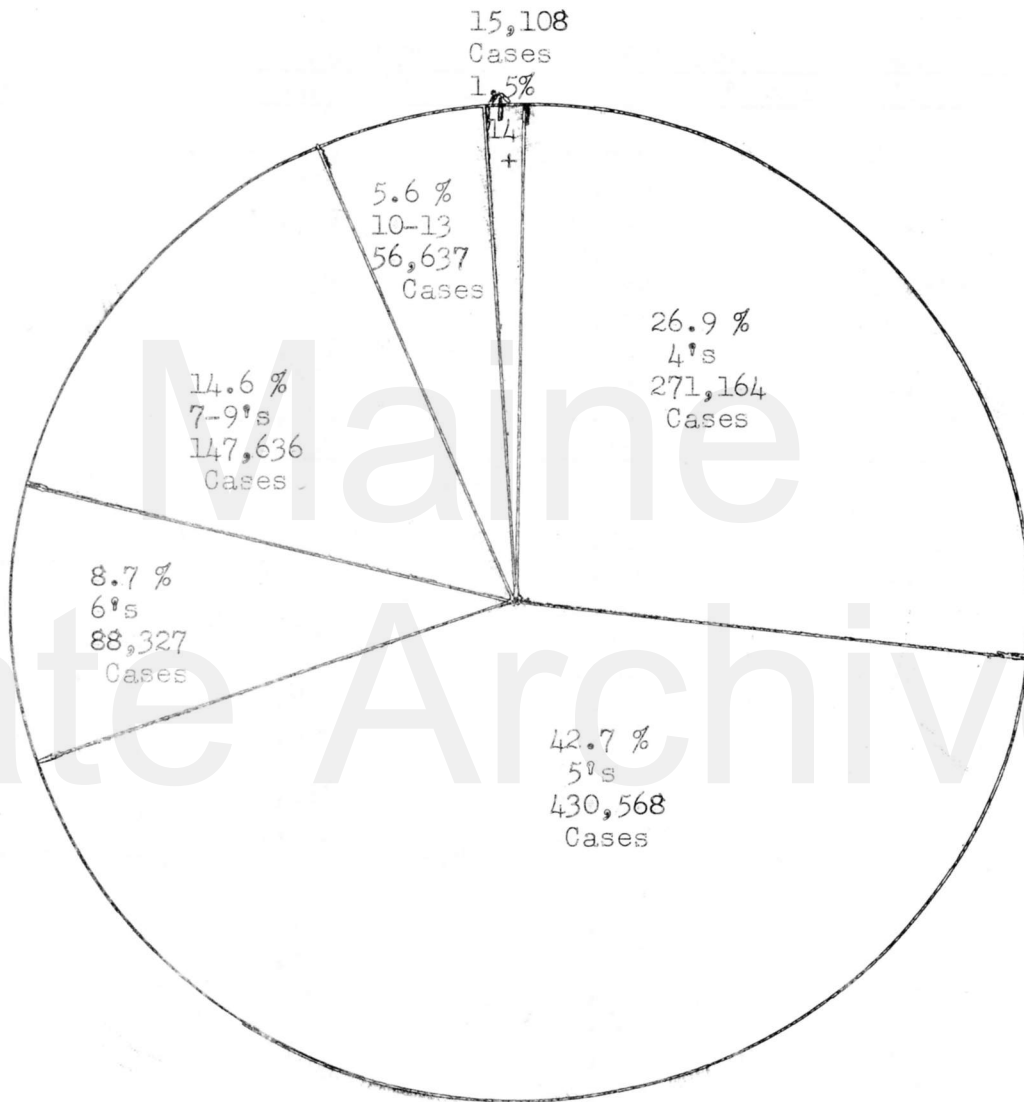
Related data has been accumulated over the years and kept on file for comparisons as desired.

Maine
State Archives

MAINE SARDINE INDUSTRY
RESEARCH AND QUALITY CONTROL LABORATORY
470 North Main Street
Brewer, Maine

April 1, 1967

1966 1/4 OIL PACK
PERCENT OF CASES PACKED BY SIZE OF FISH



TOTAL PACK 1,009,440 CASES

MAINE SARDINE INDUSTRY
RESEARCH AND QUALITY CONTROL LABORATORY
470 North Main Street
Brewer, Maine

April 1, 1967

SIZE SUMMARY

The data below shows the case distribution by size of fish of the 1,009,440 cases of the 1/4 Oil Pack, KO and K1, for the 1966 Season.

Average No. of Fish	KEYOPEN		KEYLESS		KEYOPEN AND KEYLESS	
	Cases	Totals	Cases	Totals	Cases	Totals
4.0	4,854		195,646		200,500	
4.1	850		27,135		27,985	
4.2	1,759		20,842		22,601	
4.3			9,159		9,159	
4.4	757		10,162		10,919	
4.5	402		8,281		8,683	
4.6	1,267		6,511		7,778	
4.7	589		4,592		5,181	
4.8	1,394		4,258		5,652	
4.9	<u>1,130</u>		<u>11,747</u>		<u>12,877</u>	
Total 4.0 to 4.9 inc.		13,002		298,333		311,335
5.0	34,250		203,766		238,016	
5.1	7,320		55,010		62,330	
5.2	8,652		36,666		45,318	
5.3	3,290		14,924		18,214	
5.4	5,375		21,144		26,519	
5.5	2,816		13,612		16,428	
5.6	3,296		11,077		14,373	
5.7	622		4,032		4,654	
5.8	1,186		5,921		7,107	
5.9	<u>2,009</u>		<u>6,503</u>		<u>8,512</u>	
Total 5.0 to 5.9 inc.		68,816		372,655		441,471
6.0	7,111		12,875		19,986	
6.1	1,360		4,235		5,595	
6.2	927		3,684		4,611	
6.3	362		2,728		3,090	
6.4	220		3,751		3,971	
6.5	350		1,343		1,693	
6.6	305		2,895		3,200	
6.7	263		1,216		1,479	
6.8	384		1,534		1,918	
6.9	<u>1,131</u>		<u>819</u>		<u>1,950</u>	
Total 6.0 to 6.9 inc.		12,413		35,080		47,493

Average No. of Fish	KEYOPEN		KEYLESS		KEYOPEN AND KEYLESS	
	Cases	Totals	Cases	Totals	Cases	Totals
7.0	99		2,015		2,114	
7.1	274		1,416		1,690	
7.2	602		542		1,144	
7.3	588		1,457		2,045	
7.4			2,661		2,661	
7.5	294		182		476	
7.6	361		354		715	
7.7	88		519		607	
7.8	589		2,900		3,489	
7.9	<u>1,731</u>		<u>4,290</u>		<u>6,021</u>	
Total 7.0 to 7.9 inc.		4,626		16,336		20,962
8.0	22,106		21,232		43,338	
8.1	5,788		5,359		11,147	
8.2	8,288		5,783		14,071	
8.3	4,118		5,752		9,870	
8.4	4,453		3,684		8,137	
8.5	3,017		2,113		5,130	
8.6	1,537		2,871		4,408	
8.7	1,084		479		1,563	
8.8	1,663		866		2,529	
8.9	<u>391</u>		<u>1,863</u>		<u>2,254</u>	
Total 8.0 to 8.9 inc.		52,445		50,002		102,447
9.0	2,296		4,265		6,561	
9.1	701		1,578		2,279	
9.2	808		735		1,543	
9.3	1,123		299		1,422	
9.4	1,410		772		2,182	
9.5	1,679		783		2,462	
9.6	1,259		682		1,941	
9.7	537		64		601	
9.8	2,334		969		3,303	
9.9	<u>3,684</u>		<u>1,049</u>		<u>4,733</u>	
Total 9.0 to 9.9 inc.		15,831		11,196		27,027
10.0	8,322		1,236		9,558	
10.1	840		974		1,814	
10.2	1,174		803		1,977	
10.3	1,341		1,219		2,560	
10.4	676		344		1,020	
10.5	1,074		873		1,947	
10.6	1,546		1,084		2,630	
10.7	1,451		43		1,494	
10.8	797		512		1,309	
10.9	<u>56</u>				<u>56</u>	
Total 10.0 to 10.9 inc.		17,277		7,088		24,365

Fish Size Summary - 1966 Season - 1/4 Oil

Average No. of Fish	KEYOPEN		KEYLESS		KEYOPEN AND KEYLESS	
	Cases	Totals	Cases	Totals	Cases	Totals
11.0	844				844	
11.1	709		128		837	
11.2	689		245		934	
11.3	737		646		1,383	
11.4	1,276		260		1,536	
11.5	175		381		556	
11.6	741				741	
11.7	329		29		358	
11.8	622		115		737	
11.9	<u>552</u>		<u>85</u>		<u>638</u>	
Total 11.0 to 11.9 inc.		6,675		1,889		8,564
12.0	762		177		939	
12.1	1,459		106		1,565	
12.2	363		329		692	
12.3	308		213		521	
12.4	554		405		959	
12.5	1,012		102		1,114	
12.6			155		155	
12.7			530		530	
12.8	858				858	
12.9	<u>106</u>				<u>106</u>	
Total 12.0 to 12.9 inc.		5,422		2,017		7,439
13.0	1,014		382		1,396	
13.1			271		271	
13.2	440		212		652	
13.3	154		188		342	
13.4	176		392		568	
13.5	332		219		551	
13.6			893		893	
13.7						
13.8	200		1,234		1,434	
13.9	<u>190</u>		<u>432</u>		<u>622</u>	
Total 13.0 to 13.9 inc.		2,506		4,223		6,729
14.0	250		148		398	
14.1			626		626	
14.2	316		82		398	
14.3	250		252		502	
14.4	735				735	
14.5	318		587		905	
14.6			137		137	
14.7	298		104		402	
14.8	208		469		677	
14.9			<u>70</u>		<u>70</u>	
Total 14.0 to 14.9 inc.		2,375		2,475		4,850

Page 4
 Fish Size Summary - 1966 Season - 1/4 Oil

Average No. of Fish	KEYOPEN		KEYLESS		KEYOPEN AND KEYLESS	
	Cases	Totals	Cases	Totals	Cases	Totals
15.0	182		344		526	
15.1	75		527		602	
15.2	680		742		1,422	
15.3	236		801		1,037	
15.4	182				182	
15.5	200				200	
15.6	94		45		139	
15.7	380				380	
15.8						
15.9	<u>462</u>		<u>167</u>		<u>629</u>	
Total 15.0 to 15.9 inc.		2,491		2,626		5,117
16.0 or more	<u>1,207</u>		<u>434</u>		<u>1,641</u>	
Total 16.0 or more		1,207		434		<u>1,641</u>
			<u>TOTAL CASES</u>			<u>1,009,440</u>

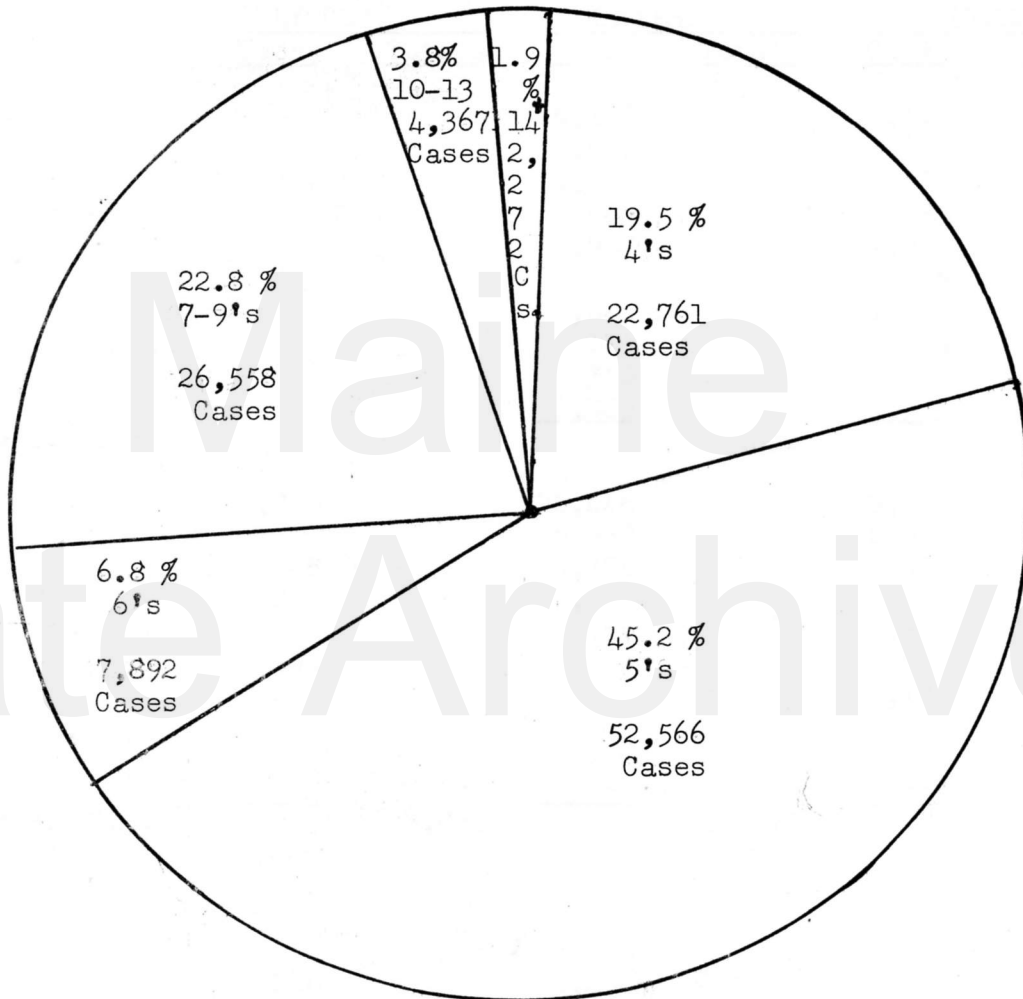
Maine

State Archives

MAINE SARDINE INDUSTRY
RESEARCH AND QUALITY CONTROL LABORATORY
470 North Main Street
Brewer, Maine

April 1, 1967

1966 1/4 MUSTARD PACK
PERCENT OF CASES PACKED BY SIZE OF FISH



TOTAL PACK 116,416 CASES

MAINE SARDINE INDUSTRY
RESEARCH AND QUALITY CONTROL LABORATORY
470 North Main Street
Brewer, Maine

April 1, 1967

SIZE SUMMARY

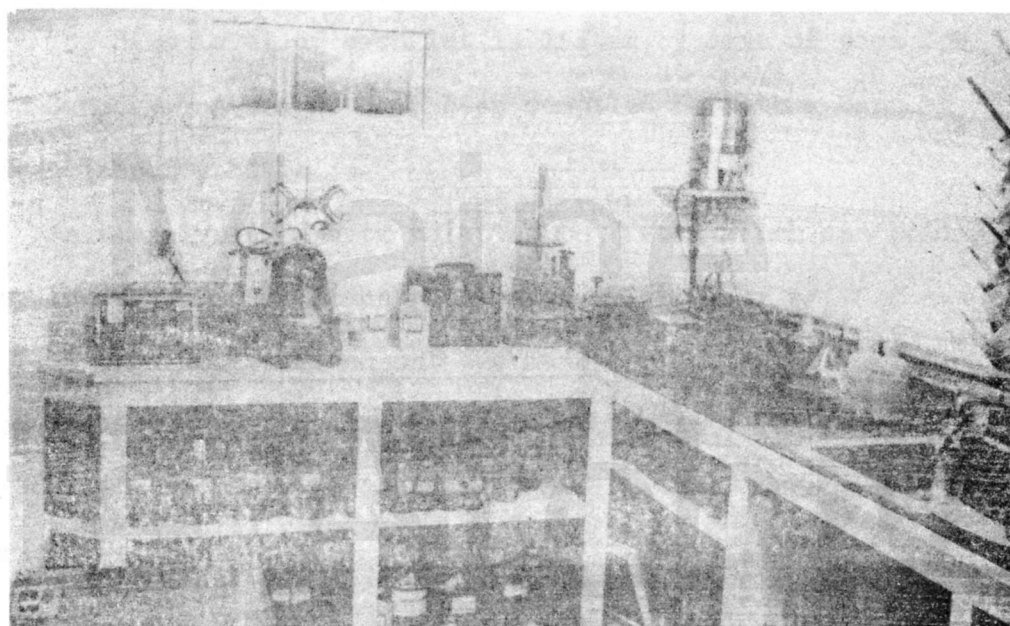
The data below shows the case distribution by size of fish of the 116,416 cases of the 1/4 Mustard Pack, KO and KL, for the 1966 Season.

Average No. of Fish	<u>KEYOPEN</u>		<u>KEYLESS</u>		<u>KEYOPEN & KEYLESS</u>	
	Cases	Totals	Cases	Totals	Cases	Totals
4.0			16,128		16,128	
4.1			1,657		1,657	
4.2			2,575		2,575	
4.3			484		484	
4.4			1,917		1,917	
4.5			795		795	
4.6			1,025		1,025	
4.7			115		115	
4.8			350		350	
4.9			<u>1,385</u>		<u>1,385</u>	
Total 4.0 to 4.9 inc.				26,431		26,431
5.0	2,880		26,446		29,326	
5.1			6,938		6,938	
5.2	548		5,374		5,922	
5.3	231		3,667		3,898	
5.4			2,812		2,812	
5.5	165		1,505		1,670	
5.6			2,189		2,189	
5.7			1,223		1,223	
5.8			236		236	
5.9			<u>681</u>		<u>681</u>	
Total 5.0 to 5.9 inc.		3,824		51,071		54,895
6.0	70		1,782		1,852	
6.2			41		41	
6.5			1,140		1,140	
6.6	224		1,280		1,504	
6.7			19		19	
6.8	231				231	
6.9	<u>383</u>				<u>383</u>	
Total 6.0 to 6.9 inc.		908		4,262		5,170
7.0	329				329	
7.2			381		381	
7.4			845		845	
7.5	125		629		754	
7.6			138		138	
7.7	243		86		329	
7.8	175				175	
7.9	<u>822</u>				<u>822</u>	
Total 7.0 to 7.9 inc.		1,694		2,079		3,773

Page 2
 Fish Size Summary - 1966 Season - 1/4 Mustard

Average No. of Fish	KEYOPEN		KEYLESS		KEYOPEN & KEYLESS	
	Cases	Totals	Cases	Totals	Cases	Totals
8.0	4,624		1,901		6,525	
8.1	1,989		977		2,966	
8.2	765		2,444		3,209	
8.3	835		321		1,156	
8.4	1,165		992		2,157	
8.5	425				425	
8.6	648				648	
8.8	116				116	
Total 8.0 to 8.9 inc.		10,567		6,635		17,202
9.1	1,020				1,020	
9.2	1,071		209		1,280	
9.4	6				6	
9.5	219				219	
9.7	121				121	
9.9	707				707	
Total 9.0 to 9.9 inc.		3,144		209		3,353
10.0	111				111	
10.1	349				349	
10.2	138		528		666	
10.4			262		262	
10.7	393				393	
10.9	37		250		287	
Total 10.0 to 10.9 inc.		1,028		1,040		2,068
11.1	193				193	
11.2	350		67		417	
11.6	44				44	
11.7	138		206		344	
Total 11.0 to 11.9 inc.		725		273		998
12.0	123				123	
12.7			45		45	
12.8	40				40	
Total 12.0 to 12.9 inc.		163		45		208
13.0	46				46	
13.6	796				796	
13.7			91		91	
13.9	92				92	
Total 13.0 to 13.9 inc.		934		91		1,025
14.4	114				114	
14.8	186				186	
Total 14.0 to 14.9 inc.		300				300
15.1	242				242	
Total 15.0 to 15.9 inc.		242				242
16.0 or more	751				751	
Total 16.0 or more		751				751
					<u>TOTAL CASES</u>	<u>116,416</u>

SECTION 2



CHEMICAL LABORATORY REPORTS

SALT LEVELS

1966 PACK - 1/4 OILS

<u>Company Number</u>	<u>No. Lots Tested</u>	<u>Company Averages</u>	<u>Range</u>		<u>No. of Co. Lots Over 3%</u>	<u>No. of Co. Lots Under 0.75%</u>
			<u>High</u>	<u>Low</u>		
15	16	2.1%	3.6%	1.0%	2	0
9	11	2.7%	4.6%	.9%	4	0
10	26	2.8%	4.2%	.6%	15	1
6	11	2.1%	3.0%	1.2%	0	0
4	17	1.9%	3.0%	1.2%	0	0
8	37	2.0%	4.2%	.8%	6	0
18	24	2.3%	3.4%	1.1%	4	0
7	21	1.6%	3.7%	.6%	3	3
5	22	1.4%	2.2%	.8%	0	0
14	11	1.6%	2.7%	.7%	0	1
3	16	2.1%	3.4%	1.1%	3	0
13	4	2.4%	3.0%	2.0%	0	0
11	50	2.7%	4.1%	1.3%	14	0
12	7	2.7%	3.2%	1.8%	2	0
17	39	2.9%	4.7%	.7%	20	1
21	17	1.7%	3.1%	1.0%	1	0
20	62	3.1%	3.9%	.9%	40	0
16	12	2.4%	4.2%	.7%	2	1
22	60	1.9%	3.7%	.6%	2	3
23	3	2.3%	3.4%	1.8%	1	0
1	3	1.9%	2.1%	1.7%	0	0
19	25	2.5%	4.6%	.8%	5	0
2	8	1.5%	3.1%	.6%	1	1
<hr/>						
TOTAL	502				125	11

	<u>Weighted Average</u>	<u>High</u>	<u>Low</u>
INDUSTRY	2.3%	4.7%	.6%

Plant #5

No. of Salt Analyses - 22
 Avg. of Salt Analyses - 1.4
 Industry Average - 2.3

Plant #14

No. of Salt Analyses - 11
 Avg. of Salt Analyses - 1.6
 Industry Average - 2.3

Plant #3

No. of Salt Analyses - 16
 Avg. of Salt Analyses - 2.1
 Industry Average - 2.3

<u>Dated Packed</u>	<u>Salt Level</u>	<u>Date Packed</u>	<u>Salt Level</u>	<u>Date Packed</u>	<u>Salt Level</u>
3-23-66	1.2	4-6-66	2.1	4-19-66	2.4
3-23	1.4	7-7	0.7	6-16	1.1
3-24	2.2	7-8	1.3	6-22	1.2
3-24	1.4	7-8	1.6	6-27	3.3
6-18	1.1	7-11	1.8	6-27	3.4
6-18	1.4	7-21	2.1	6-28	1.8
6-27	1.9	7-26	1.8	7-5	2.0
6-30	1.5	7-28	1.1	7-7	1.3
7-1	1.4	8-15	1.2	7-18	1.3
7-2	1.4	8-18	1.0	7-20	3.2
7-6	1.4	8-25	2.7	7-22	1.7
7-7	1.8	Plant #13		7-25	2.9
7-11	0.8	No. of Salt Analyses - 4		7-25	1.4
7-14	0.8	Avg. of Salt Analyses - 2.4		7-30	2.1
7-19	0.9	Industry Average - 2.3		8-1	2.3
8-1	1.3	6-16-66	2.0	8-13	1.9
8-1	1.0	7-25	3.0		
8-1	0.9	8-9	2.3	Plant #23	
8-5	1.6	8-16	2.1	No. of Salt Analyses - 3	
8-5	1.8	Plant #12		Avg. of Salt Analyses - 2.3	
8-6	1.5	No. of Salt Analyses - 7		Industry Average - 2.3	
8-12	1.4	Avg. of Salt Analyses - 2.7		7-18-66	1.8
		Industry Average - 2.3		7-19	1.9
		7-20-66	1.8	7-19	3.4
Plant #1		7-26	2.2		
No. of Salt Analyses - 3		8-8	2.9		
Avg. of Salt Analyses - 1.9		8-8	2.9		
Industry Average - 2.3		8-8	2.9		
7-14-66	2.1	8-8	3.2		
7-26	1.7	9-13	2.8		
8-16	1.9	10-1	3.2		

Plant #8

No. of Salt Analyses - 37
 Avg. of Salt Analyses - 2.0
 Industry Average - 2.3

<u>Date Packed</u>	<u>Salt Level</u>
7-6-66	1.2
7-6	1.6
7-6	1.2
7-18	1.2
7-18	1.5
7-19	2.0
7-19	2.1
7-23	1.0
7-25	1.8
7-25	2.2
7-26	1.4
7-28	1.7
7-29	2.1
7-29	2.2
8-1	1.3
8-4	1.6
8-4	1.7
8-5	1.5
8-8	4.2
8-8	2.2
8-8	1.8
8-10	1.9
8-12	1.1
8-12	1.6
8-15	1.6
8-15	1.5
8-16	3.4
8-16	3.4
8-16	3.1
8-17	2.5
8-17	2.7
8-17	2.3
8-18	2.4
8-18	2.9
8-26	0.8
9-14	3.6
9-14	3.2

Plant #18

No. of Salt Analyses - 24
 Avg. of Salt Analyses - 2.3
 Industry Average - 2.3

<u>Date Packed</u>	<u>Salt Level</u>
2-8-66	1.1
2-8	1.4
2-9	1.3
2-14	1.1
3-22	1.3
3-23	1.8
3-24	2.2
3-31	3.4
6-16	2.9
6-20	2.7
6-27	2.8
6-29	2.6
7-5	1.4
7-8	2.8
7-11	2.5
7-12	3.1
7-18	3.1
7-21	3.1
7-25	3.0
7-25	2.5
8-5	2.2
8-8	2.2
8-9	2.2
8-31	1.4

Plant #7

No. of Salt Analyses - 21
 Avg. of Salt Analyses - 1.6
 Industry Average - 2.3

<u>Date Packed</u>	<u>Salt Level</u>
2-10-66	0.7
2-14	0.6
2-23	1.2
2-23	1.0
2-23	1.2
2-25	1.0
2-25	0.9
3-11	1.1
3-12	1.2
3-23	0.6
3-23	0.9
3-23	1.0
3-24	1.1
3-24	1.3
7-20	1.8
7-23	2.3
8-9	3.4
8-9	3.7
8-17	1.3
10-5	3.1
10-5	2.9

Plant #15

No. of Salt Analyses - 16
 Avg. of Salt Analyses - 2.1
 Industry Average - 2.3

<u>Date Packed</u>	<u>Salt Level</u>
2-7-66	1.3
2-17	1.9
2-18	1.1
3-21	1.4
5-31	3.1
5-31	2.5
6-5	2.8
7-7	2.1
7-8	1.6
7-20	1.0
7-21	1.1
8-1	1.3
8-9	2.3
8-19	2.9
8-29	3.6
9-1	2.9
6-16-66	1.1
6-17	1.6
6-21	3.2
7-18	2.8
7-25	4.6
7-25	0.9
8-9	2.6
8-9	2.7
8-11	3.7
8-11	2.8
8-20	3.2

Plant #10

No. of Salt Analyses - 26
 Avg. of Salt Analyses - 2.8
 Industry Average - 2.3

<u>Dated Packed</u>	<u>Salt Level</u>
3-21-66	1.7
3-22	1.2
3-24	1.2
3-24	0.6
4-6	3.7
4-6	2.8
4-6	3.1
4-7	3.4
4-7	3.1
5-25	3.4
5-25	2.7
6-11	2.1
7-6	1.1
7-11	3.1
7-26	3.5
8-1	4.2
8-1	4.1
8-2	1.6
8-5	1.6
8-16	2.8
10-1	3.8
10-1	3.8
10-3	3.3
10-3	3.1
10-3	3.3
10-17	4.2

Plant #6

No. of Salt Analyses - 11
 Avg. of Salt Analyses - 2.1
 Industry Average - 2.3

<u>Date Packed</u>	<u>Salt Level</u>
6-8-66	1.8
6-20	1.7
6-21	2.4
6-21	2.7
6-22	1.9
6-22	1.6
7-9	2.9
7-11	2.6
7-12	1.3
7-18	3.0
7-21	1.2

Plant #4

No. of Salt Analyses - 17
 Avg. of Salt Analyses - 1.9
 Industry Average - 2.3

3-21-66	1.6
3-24	1.8
4-11	2.3
6-2	1.9
6-24	1.3
7-1	1.2
7-5	1.7
7-6	1.7
7-8	2.4
7-11	3.0
7-12	2.5
7-25	1.3
8-3	1.8
8-3	2.1
8-4	1.8
8-9	1.8
8-15	2.8

Plant #9

No. of Salt Analyses - 11
 Avg. of Salt Analyses - 2.7
 Industry Average - 2.3

6-16-66	1.1
6-17	1.6
6-21	3.2
7-18	2.8
7-25	4.6
7-25	0.9
8-9	2.6
8-9	2.7
8-11	3.7
8-11	2.8
8-20	3.2

Plant #20

Number of Salt Analyses - 62
 Average of Salt Analyses - 3.1
 Industry Average - 2.3

<u>Date Packed</u>	<u>Salt Level</u>	<u>Date Packed</u>	<u>Salt Level</u>
6-20-66	2.6	8-19-66	3.4
20	3.2	20	3.1
7- 5	2.8	22	3.3
5	2.9	22	3.4
9	2.5	24	2.4
9	2.8	25	3.1
11	2.9	9-13	3.3
11	3.1	13	3.3
11	2.8	13	3.5
11	3.1	13	3.8
21	.9	14	3.3
21	1.0	20	3.1
25	3.5	20	2.2
25	3.9	20	3.6
25	2.5	21	3.5
26	3.4	21	2.7
26	3.9	21	3.3
26	3.7	26	3.1
26	3.8	26	3.6
27	3.1	26	3.4
27	3.3	26	3.7
27	2.8	27	3.5
28	2.8	27	3.3
8- 1	3.8	27	2.9
1	3.1	27	3.1
8	2.3	27	3.1
8	2.8	27	3.1
9	2.4	10- 4	2.9
15	2.6		
18	3.4		
18	3.6		
18	3.8		
19	3.3		
19	2.7		

Plant #11

Number of Salt Analyses - 50
 Average of Salt Analyses - 2.7
 Industry Average - 2.3

<u>Date Packed</u>	<u>Salt Level</u>	<u>Date Packed</u>	<u>Salt Level</u>
2-16-66	1.3	7-12-66	3.2
3-21	2.5	21	3.0
21	2.5	22	2.8
22	2.7	22	2.5
22	2.8	22	3.5
22	1.8	22	2.4
4- 5	3.3	25	2.9
5	2.5	25	2.9
6	3.2	8- 1	2.9
7	3.1	12	2.5
7	3.0	15	2.4
18	2.7	15	2.7
21	2.7	10- 3	4.1
21	3.2	3	3.5
21	3.1	3	4.0
21	3.3	4	3.1
21	2.9		
25	2.8		
25	2.8		
6- 6	2.6		
6	3.2		
6	2.7		
6	2.6		
17	1.5		
20	2.7		
21	2.5		
23	1.7		
24	1.5		
27	2.9		
27	3.2		
29	1.6		
29	2.1		
7- 6	1.7		
6	1.6		

Plant #21

No. of Salt Analyses - 17
 Avg. of Salt Analyses - 1.7
 Industry Average - 2.3

Plant #19

No. of Salt Analyses - 25
 Avg. of Salt Analyses - 2.5
 Industry Average - 2.3

Plant #16

No. of Salt Analyses - 12
 Avg. of Salt Analyses - 2.4
 Industry Average - 2.3

<u>Dated Packed</u>	<u>Salt Level</u>	<u>Date Packed</u>	<u>Salt Level</u>	<u>Date Packed</u>	<u>Salt Level</u>
3-21-66	1.2	3-23-66	1.5	6-10-66	2.1
3-21	1.0	4-8	3.4	6-11	2.8
3-22	1.2	4-13	4.5	6-11	4.1
3-24	1.3	4-13	4.6	7-12	0.8
6-20	1.7	4-13	2.8	7-15	0.7
6-21	2.7	6-2	3.2	7-18	2.1
6-22	2.2	6-3	2.3	7-18	2.2
6-27	1.5	6-11	3.0	7-22	2.4
6-27	1.6	6-21	2.2	7-25	4.2
7-1	1.4	6-22	0.9	7-29	1.5
7-1	2.0	6-30	2.6	8-15	2.8
7-5	1.3	7-6	2.2	8-15	2.5
7-6	1.2	7-15	0.8	Plant #2	
7-18	1.5	7-16	1.4	No. of Salt Analyses - 8	
7-19	2.2	7-19	3.0	Avg. of Salt Analyses - 1.5	
7-20	1.8	8-2	2.3	Industry Average - 2.3	
8-13	3.1	8-5	2.1	6-18-66	0.6
		8-12	1.8	6-21	2.1
		8-18	2.3	6-24	0.9
		8-19	2.5	7-15	1.0
		8-22	2.8	7-19	0.9
		8-24	2.8	7-20	3.1
		8-31	3.1	7-25	1.2
		9-6	2.3	8-12	2.5
		9-10	2.8		

Plant #22

Number of Salt Analyses - 60
 Average of Salt Analyses - 1.9
 Industry Average - 2.3

<u>Date Packed</u>	<u>Salt Level</u>	<u>Date Packed</u>	<u>Salt Level</u>
2- 7-66	2.1	7-20-66	2.6
3-11	1.0	21	.9
12	2.8	21	1.4
20	1.6	21	2.2
21	1.5	22	2.3
24	1.2	22	2.1
4- 7	2.7	26	1.0
5- 2	1.8	26	1.6
6- 6	2.8	30	1.5
21	2.3	8- 1-	1.1
26	2.9	2	3.7
27	2.6	2	1.0
28	1.9	8	1.8
28	2.7	8	1.8
29	1.3	8	1.6
30	2.8	8	1.6
30	2.9	8	1.7
7- 5	2.5	10	2.1
5	2.6	12	1.1
5	.9	16	1.8
6	3.1	17	.8
8	2.1	18	1.1
8	2.7	18	.7
12	2.7	18	1.0
12	2.9	18	.7
14	2.6	19	.6
14	1.0	24	2.1
14	.8	29	2.8
14	.9		
18	1.1		
19	2.5		
20	3.0		

Plant #17

Number of Salt Analyses - 39
 Average of Salt Analyses - 2.9
 Industry Average - 2.3

<u>Date Packed</u>	<u>Salt Level</u>	<u>Date Packed</u>	<u>Salt Level</u>
4- 6-66	2.1	8-18-66	3.3
12	2.4	18	2.4
6-17	.7	19	2.8
7- 7	1.8	19	2.5
8	3.7	19	2.9
8	3.4	26	3.8
8	3.7	12-11	3.3
9	2.6		
16	3.2		
18	3.8		
18	4.4		
24	3.1		
25	4.7		
8- 2	2.4		
3	1.8		
10	2.7		
10	3.2		
10	3.4		
10	1.2		
11	2.6		
11	1.9		
11	2.0		
11	1.1		
12	2.9		
15	3.1		
15	2.7		
17	3.2		
17	3.4		
17	3.4		
17	3.5		
18	3.6		
18	3.4		

SALT LEVELS - 1966 - 1/4 OILS

INDUSTRY AVERAGE BY SIZE OF FISH

<u>Size of Fish</u>	<u>Average % of Salt</u>	<u>Low Level</u>	<u>High Level</u>	<u>Number of Lots</u>
4's	1.92 %	0.6 %	4.2 %	80
5's	2.06 %	0.6 %	4.2 %	200
6's	2.59 %	0.6 %	4.1 %	67
7 - 9's	2.83 %	0.7 %	4.7 %	93
10-13's	2.58 %	1.0 %	4.2 %	55
14's+	2.07 %	1.3 %	2.8 %	7

INDUSTRY AVERAGE = 2.31 %

Low = 0.6 %

High = 4.7 %

Total

Lots = 502

April 1, 1967

1/4 Oil Pack - 1966

- Salt Levels in Relation to Holding Times -

<u>Salt %</u>	<u>Average Net to Factory Hrs. Min.</u>	<u>Average Factory to 1st Retort Hrs. Min.</u>	<u>Average 1st Retort to Last Hrs. Min.</u>	<u>Average Total Time Hrs. Min.</u>	<u>No. of Lots</u>
Below .75%	3. 2	16. 0	1. 3	21. 1	11
.75 to 1.0%	3. 2	12. 2	4. 0	20. 0	19
1.0 to 1.5%	6. 0	13. 2	3. 1	22. 3	84
1.5 to 1.9%	4. 3	16. 3	2. 0	23. 2	79
2.0 to 2.5%	5. 1	21. 0	4. 1	30. 2	68
2.5 through 3.0	6. 1	24. 0	2. 3	33. 0	116
Above 3.0%	5. 2	28. 3	2. 1	36. 2	<u>125</u>
					502

Time in minutes expressed in decimals .1 = 15
 .2 = 30
 .3 = 45