

9999

Silver Chimes Lancers : Band

G Weigard
Composer

Follow this and additional works at: <https://digitalcommons.library.umaine.edu/mmb-me>

Recommended Citation

Weigard, G, "Silver Chimes Lancers : Band" (9999). *Maine Sheet Music Collection*. Score 728.
<https://digitalcommons.library.umaine.edu/mmb-me/728>

This Book is brought to you for free and open access by DigitalCommons@UMaine. It has been accepted for inclusion in Maine Sheet Music Collection by an authorized administrator of DigitalCommons@UMaine. For more information, please contact um.library.technical.services@maine.edu.

SILVER CHIMES LANCERS

BAND

G. WEIGARD

Iod Me.

001335

Wei

Solo
B^b Clarinet

Silver Chimes Lancers

PROPERTY OF
G. PAYN
LEWISTON, MAINE.

Handwritten musical score for B^b Clarinet, titled "Silver Chimes Lancers". The score is written in treble clef with a key signature of one sharp (F#) and a time signature of 6/8. It consists of three systems of music, each starting with a large number (1, 2, 3) in a circle. The first system has four staves. The second system has three staves, with a large shaded area in the second staff. The third system has three staves. The score includes various musical notations such as slurs, accents, and dynamic markings like "f" and "p". The word "Fine" appears at the end of the first and second systems. The piece concludes with a double bar line and a repeat sign.

PROPERTY OF
F. G. PAYNE,
LEWISTON, MAINE.

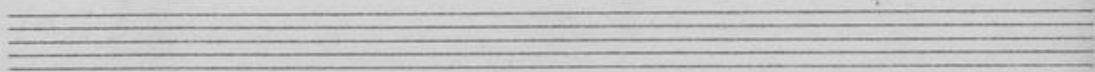
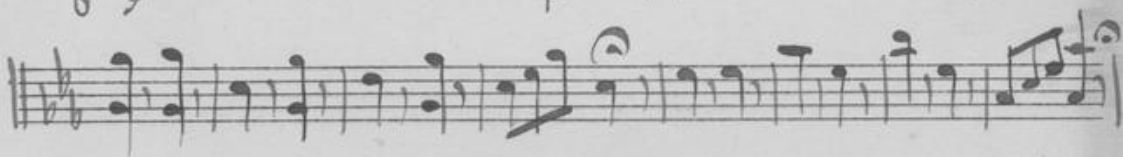
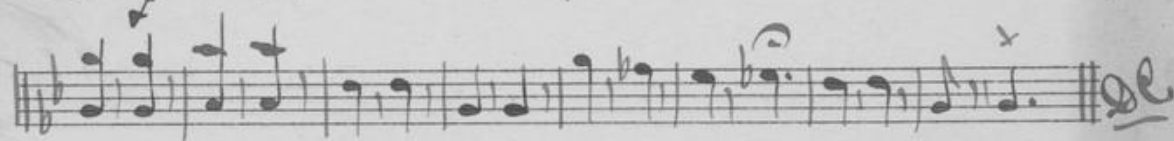
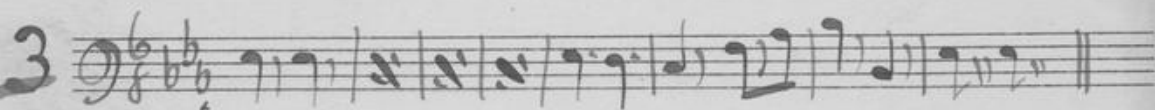
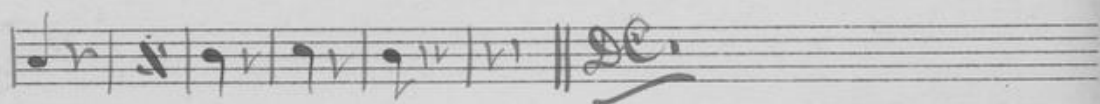
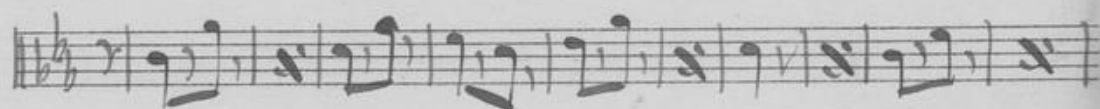
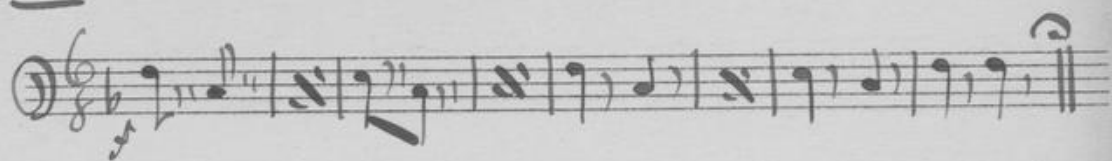
"The Great" (None Genuine without Watermark.) M. WITMARK & SONS, Selling Agts, New York & Chicago.

A handwritten musical score for a piece titled "The Great". The score is written on ten staves. The first staff begins with a large number "4" in a circle. The music is written in treble clef with a key signature of one sharp (F#) and a 4/4 time signature. The notation is dense, featuring many beamed eighth and sixteenth notes, often with slurs. There are several dynamic markings, including "p" (piano) and "f" (forte), and some articulation marks like "t" (tenuto). The score concludes with a double bar line and a decorative flourish.



String
Bass

Silva Chiusa Laurus



Frederick G. Payne - mss
1856 - 1919
Newiston -

Handwritten musical notation on a single staff, starting with a treble clef, a 2/4 time signature, and a key signature of one flat (B-flat). The notation includes various note values, rests, and dynamic markings such as *f* and *p*. The piece concludes with a double bar line and a final cadence.

"The Crest" (None Genuine without Watermark.) M. WITMARK & SONS, Selling Agts, New York & Chicago.

Eight sets of empty musical staves, each consisting of five horizontal lines, provided for additional notation.



1st B \flat CLARINET.

PROPERTY OF
F. G. PAYNE,
LEWISTON, MAINE.

SILVER CHIMES LANCERS.

Geo. Wiegand.

1

f

Fine. mf

p

D. C. al Fine.

2

f

1 & 3. time. 2 & 4. time.

Fine. D. C. al Fine. p

D. C. al Fine.

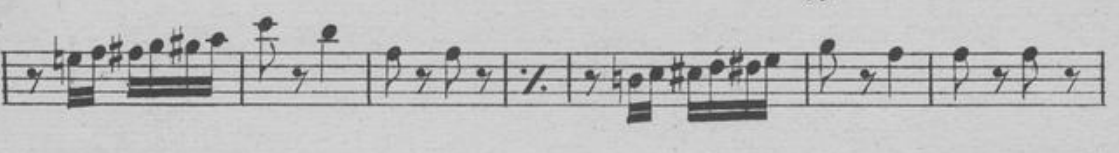
3

f

Fine. mf

D. C. al Fine.

PROPERTY OF
F. G. PAYNE,
LEWISTON, MAINE.



Fine.

p

D. C. al Fine.

Fine.

D. S. al Fine.

PROPERTY OF
F. G. PAYNE,
LEWISTON, MAINE.

2^d B \flat CLARINET.

SILVER CHIMES LANCERS.

Geo. Wiegand.

1

f *tr* *tr* *Fine.* *mf* *p*

D. C. al Fine.

Detailed description: This system contains the first four staves of music. The first staff begins with a treble clef, a key signature of one sharp (F#), and a 6/8 time signature. It starts with a dynamic marking of *f* and features two trills (*tr*) over the first two measures. The second staff continues the melody with another trill and ends with a *Fine.* marking and a *mf* dynamic. The third staff begins with a *p* dynamic and continues the melodic line. The fourth staff concludes the system with a *D. C. al Fine.* instruction.

2

f *Fine.* 1 & 3. time. 2 & 4. time. *p* 1

D. C. al Fine.

D. C. al Fine.

Detailed description: This system contains the fifth through eighth staves. The fifth staff starts with a treble clef, a key signature of one sharp, and a 2/4 time signature, marked with a dynamic of *f*. The sixth staff includes a *Fine.* marking and a first ending bracket labeled "1 & 3. time." followed by a *p* dynamic. The seventh staff contains a second ending bracket labeled "2 & 4. time." and a first ending bracket labeled "1". The eighth staff concludes the system with a *D. C. al Fine.* instruction.

3

f *tr* *Fine.* *mf*

D. C. al Fine.

Detailed description: This system contains the ninth through eleventh staves. The ninth staff begins with a treble clef, a key signature of one flat (B \flat), and a 6/8 time signature, marked with a dynamic of *f*. It features a trill (*tr*) over the second measure. The tenth staff continues the melody and ends with a *Fine.* marking and a *mf* dynamic. The eleventh staff concludes the system with a *D. C. al Fine.* instruction.

PROPERTY OF
F. G. PAYNE,
LEWISTON, MAINE.

4 *ff*

Fine. p

ff *D. C. al Fine.*

5 *ff* *p*

f

Fine. f p

f mf

ff

D.S. al Fine.

3^d B \flat CLARINET.

PROPERTY OF
F. G. PAYNE,
LEWISTON, MASS.

SILVER CHIMES LANCERS.

Geo. Wiegand.

1

f *tr* *tr* *Fine.* *mf*

p

f

D. C. al Fine.

2

f *Fine* 1.&3. time. 2.&4. time. *p*

15

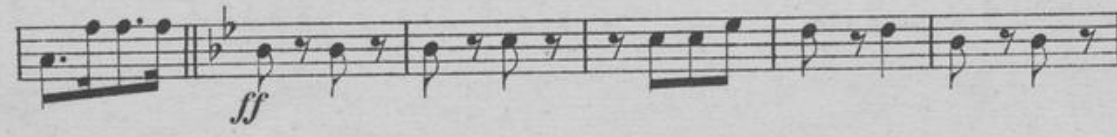
D. C. al Fine.

1 1 *D. C. al Fine.*

3

f *Fine.*

mf *D. C. al Fine.*



E♭ CLARINET.

PROPERTY OF
F. G. PAYNE,
LEWISTON, MAINE

SILVER CHIMES LANCERS.

Geo. Wiegand

1 


Fine. *mf*




D. C. al Fine.

2 


Fine. D. C. al Fine. *p*


D. C. al Fine.

3 


Fine. *mf*


D. C. al Fine.

4 
ff


Fine. p


ff *D. C. al Fine.*

5 
ff *p*


ff


Fine.


ff *p* *tr*


mf


ff




D. S. al Fine.

1st Eb ALTO.

PROPERTY OF
F. G. PAYNE,
LEWISTON, MAINE.

SILVER CHIMES LANCERS.

Geo. Wiegand.

1

f

Fine. *mf*

p

D. C. al Fine.

2

f

1 2 3 4 5 6 7 *Fine!* *p*

D. C. al Fine.

3

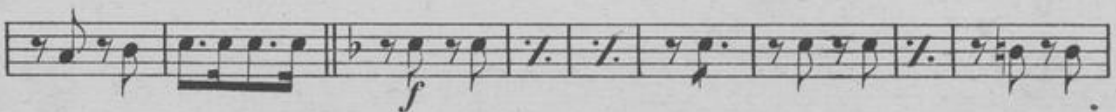
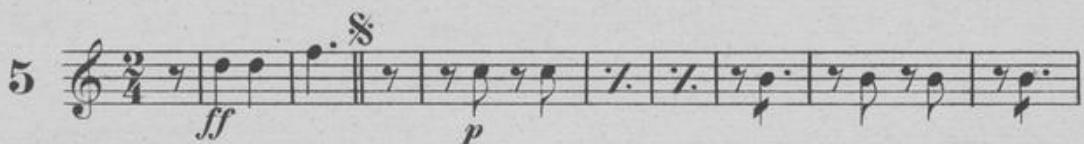
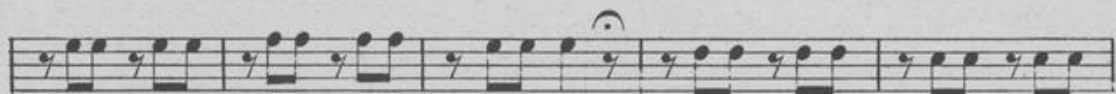
f

tr

Fine. *mf*

D. C. al Fine.

Published by C. Fischer N. Y.



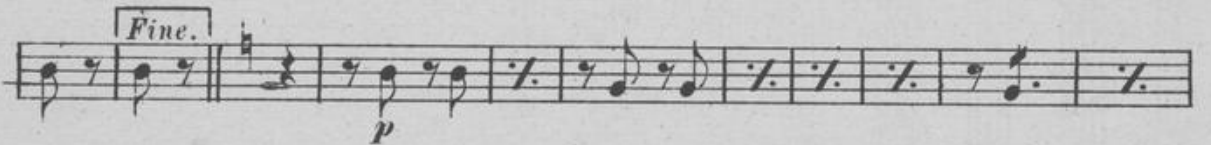
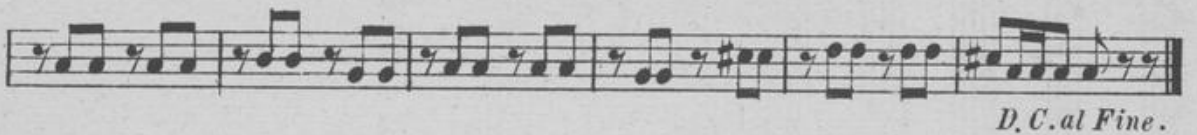
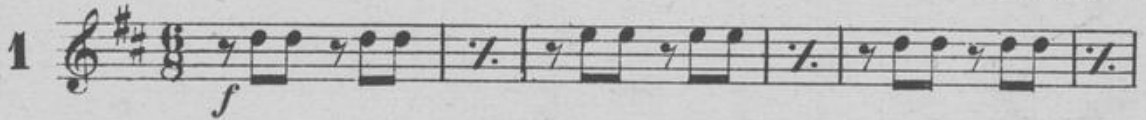
D.S. al Fine.

2^d Eb ALTO.

PROPERTY OF
F. G. PAYNE,
LEWISTON, MAINE.

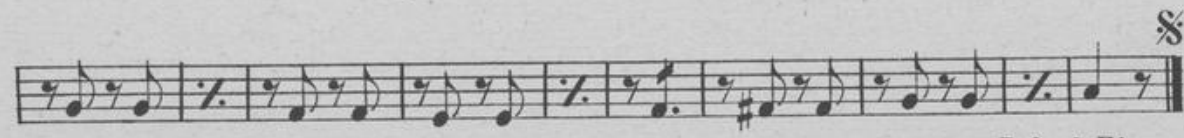
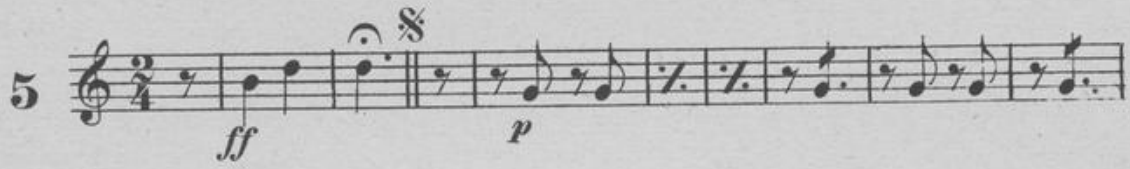
SILVER CHIMES LANCERS.

Geo. Wiegand





D.C. al Fine.



D.S. al Fine.

PROPERTY OF
F. G. PAYNE,
LEWISTON, MAINE.

3d E♭ ALTO.

SILVER CHIMES LANCERS.

Geo. Wiegand.

1 *f* 1 2 3 4 5 6 *Fine.* *mf* *p* *D.C. al Fine.* *Fine*

2 *f* *p* *D.C. al Fine.*

3 *f* *Fine* *mf* *D.C. al Fine.*

4 *f* *p* *f* *D.C. al Fine.*

5 *ff* *p* *f* *Fine.* *f* *p* *f* *D.S. al Fine.*

1ST TENOR.

SILVER CHIMES LANCERS.

PROPERTY OF
F. G. PAYNE,
LEWISTON, MAINE.
Geo. Wiegand.

1 *f* *Fine.* *mf* *p* *D.C.al Fine.* *Fine.* 2

2 *f* 1 *D.C.al Fine.*

3 *f* *Fine.* *mf* *D.C.al Fine.*

4 *f* *Fine.* *p* *ff* *D.C.al Fine.*

5 *ff* *p* *f* *p* *f* *mf* *ff* *D.S.al Fine.*

PROPERTY OF
F. G. PAYNE,
LEWISTON, MAINE

1st TENOR.

SILVER CHIMES LANCERS. Geo. Wiegand.

1 *mf* *p* *Fine.* *D.C. al Fine.*

2 *f* *p* *Fine.* *D.C. al Fine.*

3 *f* *p* *mf* *Fine.* *D.C. al Fine.*

4 *f* *ff* *Fine.* *D.C. al Fine.*

5 *ff* *p* *f* *Fine.* *D.S. al Fine.*

2^d TENOR.

PROPERTY OF
F. G. PAYNE,
FRANKLIN, MAINE.

SILVER CHIMES LANCERS.

Geo. Wiegand.

1 *f* Fine. *mf*

2 *f* Fine. *p* *D.C. al Fine.*

3 *f* Fine. *mf* *D.C. al Fine.*

4 *f* Fine. *p* *D.C. al Fine.*

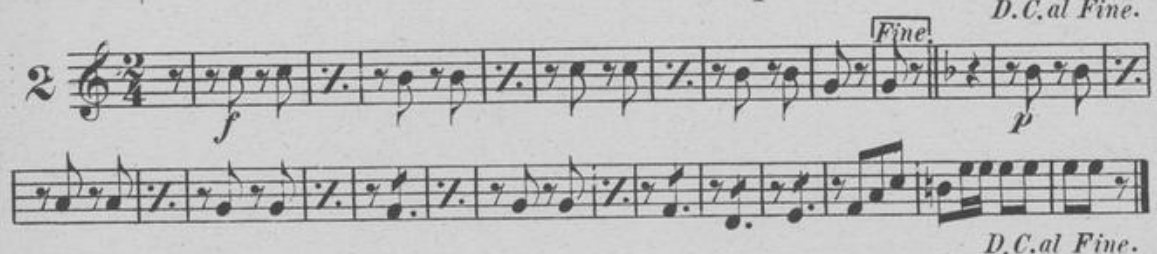
5 *ff* *p* *f* Fine. *f* *D.C. al Fine.* *D.S. al Fine.*

2d TENOR.

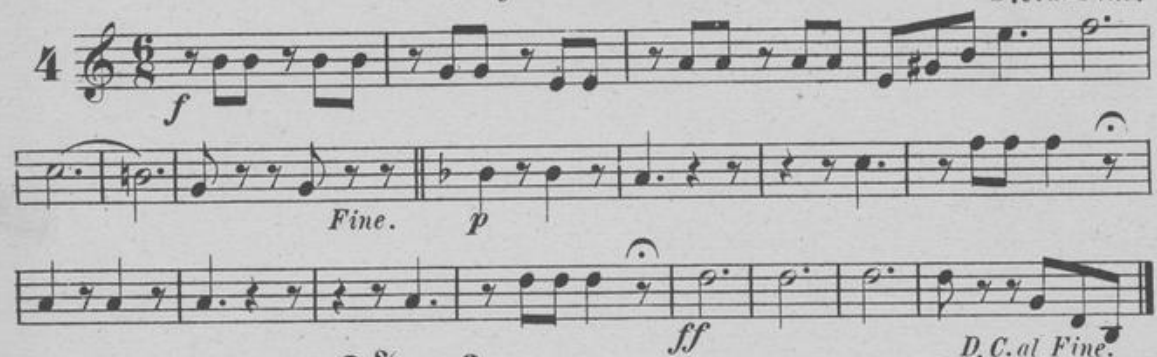
SILVER CHIMES LANCERS

PROPERTY OF
F. G. PAYNE,
NEWISTON, MAINE.
Geo. Wiegand:

1 



3 

4 

5 

D. S. al Fine.

BARITON.

PROPERTY OF
F. G. PAYNE
L. NEWBOSTON, MASS.

SILVER CHIMES LANCERS.

Geo. Wiegand.



4

f

Fine. *p*

ff *D.C.al Fine.*

5

ff *p*

f

Fine. *f* *p*

f *mf*

D.S.al Fine.

BARITON.

J. G. PAYNE,
LEWISTON, MAINE.

SILVER CHIMES LANCERS.

Geo. Wiegand.



D. C. al Fine.



D. C. al Fine.

Published by C. Fischer N. Y.

4

f

Fine. p

ff

D. C. al Fine.

5

ff

p

f

Fine. f p

f

mf

D. S. al Fine.

PROPERTY OF
F. G. PAYNE,
LEWISTON, MAINE.

BASS.

SILVER CHIMES LANCERS

Geo. Wiegand.

1 *f* *Fine. mf* *p* *D.C. al Fine.*

2 *f* *Fine. p* *D.C. al Fine.*

3 *f* *Fine. f* *D.C. al Fine.*

4 *f* *Fine. p* *ff* *D.C. al Fine.*

5 *ff* *p* *f* *Fine. f* *p* *f* *mf* *f* *D.S. al Fine.*

PROPERTY OF
F. G. PAYNE,
LEWISTON, MAINE.

E \flat CORNET.

SILVER CHIMES LANCERS.

Geo. Wiegand.

1 *f*

Fine. mf

p

B \flat

D. C. al Fine.

2 *f*

Fine! 1 & 3. time.

p B \flat

E \flat

D. C. al Fine.

2 & 4. time.

p

D. C. al Fine.

3 *f*

tr

Fine. mf

B \flat

D. C. al Fine.

PROPERTY OF
F. G. PAYNE,
LEWISTON, MAINE.

4

ff

Fine. p

ff D.C. al Fine.

5

ff

p

f

Fine.

p

f

mf

f

f

D.S. al Fine.

1st B \flat CORNET.

PROPERTY OF
F. G. PAYNE,
LEWISTON, MAINE.

SILVER CHIMES LANCERS.

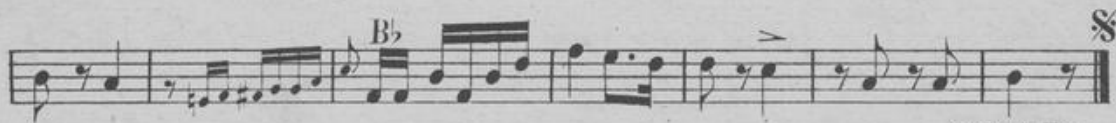
Geo. Wiegand.



D. C. al Fine.



D. C. al Fine.



D.S. al Fine.

2^d B. CORNET.

SILVER CHIMES LANCERS.

Geo. Wiegand.

1 *f* *Fine.* *mf* *p* *D.C. al Fine.* *Fine.*

2 *f* *p* *D.C. al Fine.*

3 *f* *Fine.* *mf* *D.C. al Fine.*

4 *f* *Fine.* *p* *ff* *D.C. al Fine.*

5 *ff* *Fine.* *p* *f* *D.S. al Fine.*

3^d B \flat CORNET.

SILVER CHIMES LANCERS.

PROPERTY OF
F. G. PAYNE,
NEWTON, MASS.

Geo. Wiegand.

1 *f* *Fine.* *p* *D.C. al Fine.*

2 *f* *Fine.* *D.C. al Fine.*

3 *f* *Fine. mf* *D.C. al Fine.*

4 *f* *Fine. p* *D.C. al Fine.*

5 *ff* *p* *f* *Fine. f* *mf* *f* *D.S. al Fine.*

4th B^b CORNET

SILVER CHIMES LANCERS.

PROPERTY OF
F. G. PAYNE,
LEWISTON, MAINE.
Geo. Wiegand.

1 *f* *Fine.* *mf* *p* *D.C.al Fine.*

2 *f* *Fine.* II *p* *D.C.al Fine.*

3 *f* *Fine.* *mf* *D.C.al Fine.*

4 *f* *Fine.* *p* *ff* *D.C.al Fine.*

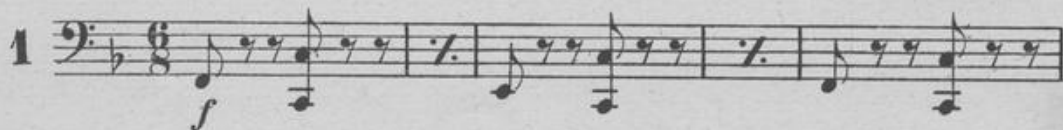
5 *ff* *p* *f* *Fine.* *f* *mf* *f* *D.S.al Fine*

TUBAS.

PROPERTY OF
F. G. PAYNE,
LEWISTON, MAINE

SILVER CHIMES LANCERS.

Geo Wiegand.

1 







2 





3 



4 *f*

Fine. p

D.C.al Fine.

5 *ff* *p* *f*

f

Fine. p

mf

f

D.S.al Fine.

PROPERTY OF
F. G. PAYNE,
LEWISTON, MAINE

TUBAS.

SILVER CHIMES LANCERS.

Geo Wiegand

1 



Fine. mf

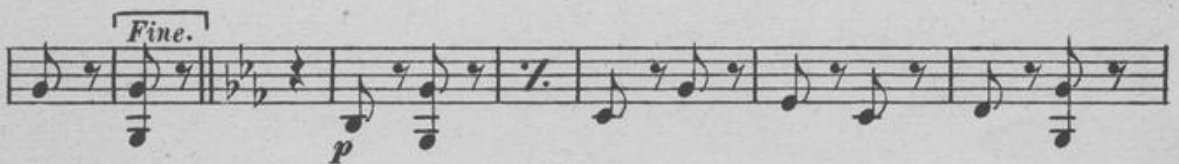


p



D. C. al Fine.

2 



Fine.
p



D. C. al Fine.

3 



mf
D. C. al Fine.

PROPERTY OF
F. G. PAYNE,
LEWISTON, MAINE.

4 *f*

Fine. p

D.C.al Fine.

5 *ff* *p*

f

Fine. p

mf

f

D.S.al Fine.