

The University of Maine DigitalCommons@UMaine

Maine Sheet Music Collection

Public domain (may be downloaded in full)

1922

The Rosary

Ethelbert Woodbridge Nevin
Composer

W.M Clark
Lyricist

Follow this and additional works at: <https://digitalcommons.library.umaine.edu/mmb-me>

Recommended Citation

Nevin, Ethelbert Woodbridge and Clark, W.M, "The Rosary" (1922). *Maine Sheet Music Collection*. Score 96.
<https://digitalcommons.library.umaine.edu/mmb-me/96>

This Book is brought to you for free and open access by DigitalCommons@UMaine. It has been accepted for inclusion in Maine Sheet Music Collection by an authorized administrator of DigitalCommons@UMaine. For more information, please contact um.library.technical.services@maine.edu.



The Holy Hour

A Sacred Song

The Words by

W. M. Clark

Adapted to the Music of

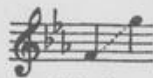
"The Rosary"

By

Athelbert Nevin

Price, 60 cents each

(In U. S. A.)



High
in Eb



→ Medium,
in C



Low
in Bb

The Boston Music Co. • Boston

Ves Me.

000440

Nev/1104

The Holy Hour

3

A Sacred Song
adapted to the music of

"The Rosary"

Words by
W. M. Clark

ETHELBERT NEVIN

Lento e religioso

Voice

This ho - ly hour, so sweet to me,

Piano

Is fraught with bless-ings man-i - fold. On bend - ed knee I dream and

poco rall.

seem to see My Sa - viour's face, His smile be - hold.

poco rall.

dolce pp

Copyright, 1922, by The Boston Music Co.

Printed in U. S. A.

B. M. Co. 6890 c

When performing and programming this number on the air, kindly give credit to THE BOSTON MUSIC COMPANY

a tempo
mp

With hands out-stretch'd, my eyes I raise To Him whose death the world re -

a tempo
mp

p

Tea Tea *

cresc.

deem'd, My voice breaks out in glo - rious praise; On me his

molto largamente

molto largamente

cresc.

Tea Tea * Tea *

mf

kind eyes beam! O won - drous Sa - viour, pre - cious

a tempo

a tempo

mf

p quasi arpeggio dolcissimo

Tea p. *

Friend, Who bought our souls at such a cost,

patetico

Tea * *Tea* * *Tea* * *Tea* * *Tea* *

mf sempre cresc. I hail Thee, now, and to the last glad end I'll bear the

f

mf sempre cresc. *f*

Tea * *Tea* *

f poco accel. *ff* *Largo pp*

Cross, Thy Cross! I'll bear the Cross.

poco accel. *f* *ff* *pp*

Tea * *Tea* * *Tea* *

ETHELBERT NEVIN

VOCAL COMPOSITIONS

Songs and Duets

SERIES ONE

Text abbreviations: e.-English; f.-French; g.-German; i.-Italian; d.-Danish; r.-Russian; sp.-Spanish
For songs marked with (*) Orchestra Accompaniment may be had from the publishers

SONGS WITH PIANO ACCOMPANIMENT

- | | Price
(in U.S.A.) |
|---|----------------------|
| Op. 2. A SKETCHBOOK (Songs and Piano Pieces) Complete, | .75 |
| 2 'Twas in the Lovely Month of May (e. & g.) | |
| 4 O Fair and Sweet and Holy (e. & g.) | |
| 6 Oh, Let Thy Tears (e. & g.) | |
| *8 Oh, That We Two Were Maying! High, Ab; Med., F; Low, Eb | .50 |
| Op. 2. { 10 In Winter I get up at Night | Complete, .50 |
| 11 Of Speckled Eggs the Birdie sings | |
| 12 Dark Brown is the River | |
| Op. 3. THREE SONGS (WITH ACCOMPANIMENT OF PIANO, VIOLIN AND 'CELLO) | |
| 1 Deep in a Rose's Glowing Heart. High, A; Med., G | .45 |
| 2 One Spring Morning. High, E min.; Med., D min. (e. & g.) | .50 |
| *3 Doris. High, F; Med., Eb | .50 |
| Op. 3. THREE SONGS (WITH PIANO ACCOMPANIMENT) | |
| 1 Deep in a Rose's Glowing Heart. High, A; Med., G | .45 |
| 2 One Spring Morning. High, E min.; Med., D min. (e. & g.) | .50 |
| 3 Doris. High, F; Med., D (e. & g.) | .50 |
| Op. 5. FIVE SONGS | |
| 1 Autumn Sadness. High, Ab; Med., F (e. & g.) | .45 |
| 2 La Chanson des Lavandières (April Garden). High, E min.; Med., D min. (e. & f.) | .45 |
| 3 'Twas April. High, G; Med., F; Low, Eb | .50 |
| 4 Raft Song. High, F; Med., Eb | .50 |
| 5 Before the Daybreak. High, Gb; Med., E | .50 |

Op. 12. FIVE SONGS

- | | Price
(in U.S.A.) |
|--|----------------------|
| 1 Summer Day. High, D; Med. C | .50 |
| 2 Beat Upon Mine, Little Heart. High, E; Med., D | .50 |
| 3 In a Bower. High, Eb min.; Med., D min | .50 |
| 4 Little Boy Blue. High, Bb; Med., Ab | .50 |
| 5 At Twilight. High, G; Med., F | .45 |

Op. 17. THREE SONGS

- | | |
|--|-----|
| 1 The Rosebud. High, F; Med., Db (e. & g.) | .50 |
| 2 Le Vase Brisé (<i>The Vase</i>). High, A; Med., Gb (e. & f.) | .50 |
| *3 Rapelle-toi (<i>Remember Well</i>). High, Ab; Med., G (e. & f.) | .75 |

Op. 20. A BOOK OF TEN SONGS. High and Low Each complete,

- | | |
|--|-----|
| 1 A Fair, Good Morn. High, Eb; Low, Db | .50 |
| 2 Sleep, Little Tulip. High, Ab; Low, F | .50 |
| 3 Ev'ry Night. High, Ab; Low, F | .35 |
| 4 Airly Beacon. High, Eb; Low, C | .45 |
| 5 When the Land Was White with Moonlight. High, E; Low, Db | .50 |
| 6 A Song of Love. High, G; Low, Eb | .50 |
| 7 Nocturne (<i>Up to her Chamber Window</i>). High, F; Low, Eb | .50 |
| 8 Dites-moi (<i>Tell me</i>). High, F; Low, Eb (e. & f.) | .45 |
| 9 Orsola's Song (<i>Chantez! La nuit sera brève</i>). High, F# min.; Low, D min. (e. & f.) | .50 |
| 10 In the Night. Bar., Bb min., Bass, G min. (e. & g.) | .50 |

THE BOSTON MUSIC COMPANY
BOSTON, MASS.

G. + B. HAUMAN