

1912

Mine

Alfred Solman
Composer

Paul Benedek
Lyricist

Mc Gee
Lyricist

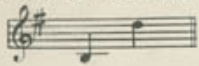
Follow this and additional works at: <https://digitalcommons.library.umaine.edu/mmb-vp>

Recommended Citation

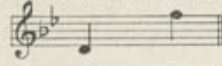
Solman, Alfred; Benedek, Paul; and Mc Gee, "Mine" (1912). *Vocal Popular Sheet Music Collection*. Score 2661.
<https://digitalcommons.library.umaine.edu/mmb-vp/2661>

This Book is brought to you for free and open access by DigitalCommons@UMaine. It has been accepted for inclusion in Vocal Popular Sheet Music Collection by an authorized administrator of DigitalCommons@UMaine. For more information, please contact um.library.technical.services@maine.edu.

BASS OR CONTRALTO IN G



BARITONE OR ALTO IN B^b



HIGH BAR. OR MEZZO SOP. IN C



TENOR OR SOP. IN E^b



INTRODUCED BY AND DEDICATED TO
MR. WILLIAM WADE HINSHAW,
BARITONE METROPOLITAN OPERA COMPANY NEW YORK CITY.



A Song

WORDS BY
JAMES W. MCGEE
AND
PAUL BENEDEK

MUSIC BY
ALFRED SOLMAN

COMPOSER OF
"IF I HAD A THOUSAND LIVES TO LIVE" ETC.



JOE MORRIS MUSIC CO.

130 WEST 37TH ST. NEW YORK

Vp. 009112
1912
MINE



By the composer of "If I Had A Thousand Lives To Live"

"MINE"Words by
JAMES W. M^c GEE
and
PAUL BENEDEK.Alto or Baritone in B \flat Music by
ALFRED SOLMAN.

Andante moderato.
legato

ff *ff* *dim.* *mf* *rit.*

If you could on - ly read my heart, dear,
The gold-en hopes that oft would cheer me,

a tempo
p *p* *f* *p*

Its joys and sor - rows too, A ten - der tale it would im -
Still in my heart re - main, The gold-en hours when you were

Copyright transferred 1912 to Joe Morris Music Co. 130 W. 37th St. New York.
Copyright MCMXI by Carl Laemmle Music Co. New York Chicago.
International Copyright Secured.

- part, dear, Of my great love for you; _____
 near me, In mem-ry live a - gain; _____

f *p* *rit* *a tempo.*

With-in my soul so long for - sak - en, Love's bright-est beams would
 And tho' to-day may bring me sad - ness, The star of Hope will

f *p*

Red. *

shine, _____ And joy that slum-bers would a - wak - en,
 shine, _____ And all the world will ring with glad - ness,

dolce. *p*

If on - ly you were mine! _____
 If on - ly you'll be mine! _____

cresc. *f* *mf* *f* *mf* *rallentando.*

12/8

Bagaduce Music
 Lending Library
 Blue Hill, Maine
 Donor **618**

Animato

Mine when the dawn is break - ing Mine in my dreams at

f *a tempo.* *mf* *a tempo.* *p* *mf*

night, Mine when the birds are

p *f* *il Basso marcato*

wak - - ing, Mine when the stars are

f *p* *f* *ritard.* *ff* *cresc. al.*

bright; Mine while the years are fly - ing,

a tempo mf animato *f* *f* *mf*

Mine with a glo-ry di - vine,

rit e marcato

il Basso mare.

Mine with a love nev-er dy - ing

ff *fff* *f*

Ped. *Ped.* *Ped.*

Mine now and al - ways mine!

Moderato

f ritard ff f a tempo. accel f

Ped. *Ped.*

mine!

ritard a tempo. accel ff ff

Ped. *Ped.*

TRY THIS OVER ON YOUR PIANO.
TELL ME THE OLD, OLD STORY.

Words and Music by
RICHARD L. WEAVER, Opus 205.

Moderato con espressione.

mf

There's a ques-tion ev-er new Sweet-heart I would ask of you, Will you
Now the birds as sweet-ly sing 'Round the i-vy cov-er'd spring, As they

p

tell me once a-gain the sto-ry dear, . . . It's the theme of life's sweet song, As the
did for us sweetheart in time be-fore, And I'm wait-ing here to-day, Fondly

a-ges roll a-long, Mak-ing sun-shine when the clouds seem near, . . . In the
hop-ing you will say, That you love me as you did of yore, . . . When I've

cresc.

Copyright 1908 by Joseph Morris, Philada. Pa.

FOR SALE BY ALL DEALERS.