

The University of Maine DigitalCommons@UMaine

Vocal Popular Sheet Music Collection

Public domain (may be downloaded in full)

1912

Paradise For Two

Ted S Barron
Composer

Jean Havez
Lyricist

Follow this and additional works at: <https://digitalcommons.library.umaine.edu/mmb-vp>

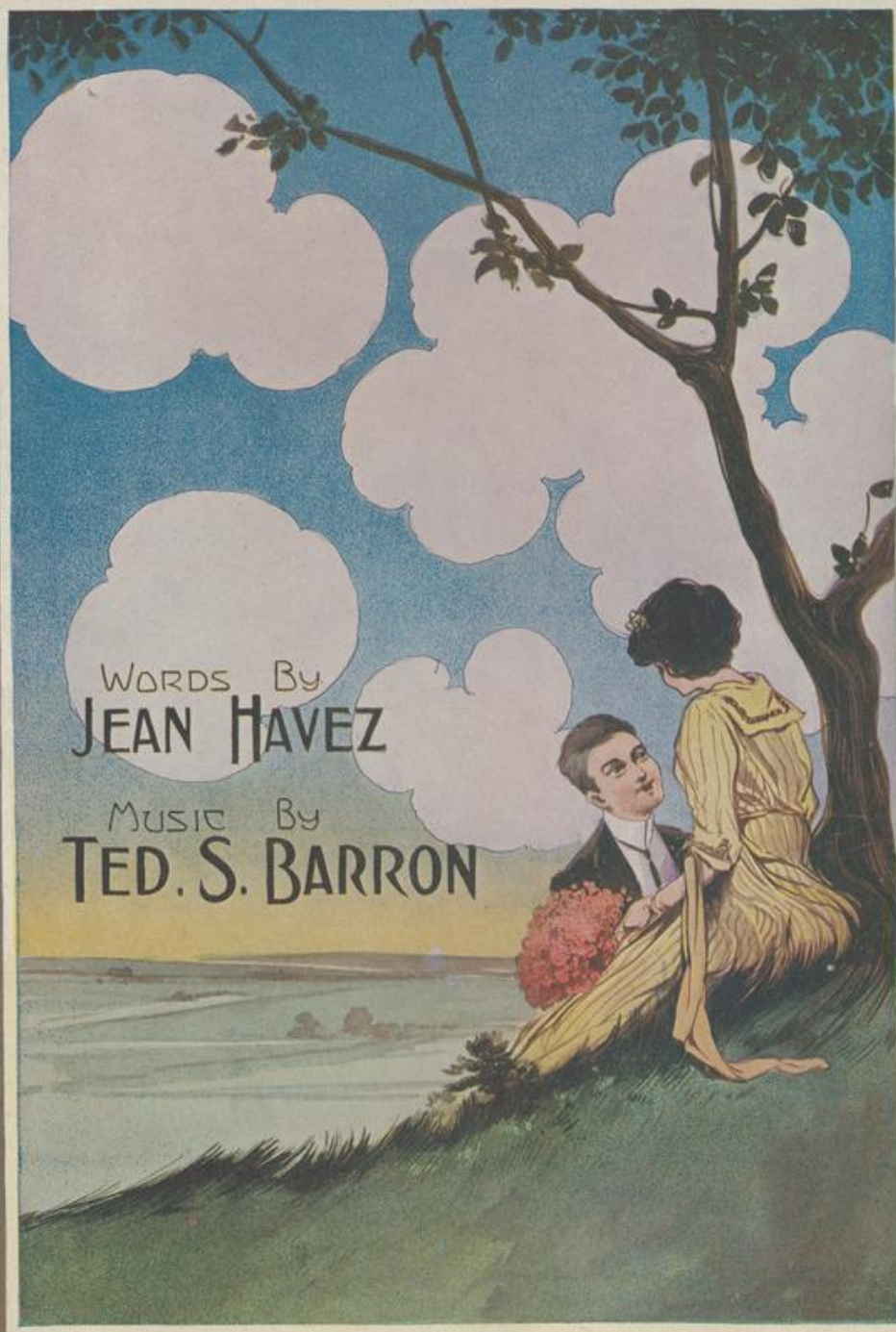
Recommended Citation

Barron, Ted S and Havez, Jean, "Paradise For Two" (1912). *Vocal Popular Sheet Music Collection*. Score 1362.
<https://digitalcommons.library.umaine.edu/mmb-vp/1362>

This Book is brought to you for free and open access by DigitalCommons@UMaine. It has been accepted for inclusion in Vocal Popular Sheet Music Collection by an authorized administrator of DigitalCommons@UMaine. For more information, please contact um.library.technical.services@maine.edu.

PARADISE FOR TWO

BALLAD



JEROME & SCHWARTZ PUBLISHING COMPANY
222 WEST 46TH STREET, NEW YORK

Vp. 004365
1912
PAR



TRY THIS ON YOUR PIANO

Performing Rights Reserved

Rainy Days

Words by
CHARLIE GRAPEWIN

Music by
JEAN SCHWARTZ

Tempo di Valse

Piano

The piano introduction is in 3/4 time, marked 'Tempo di Valse'. It begins with a treble clef and a key signature of one flat (B-flat). The melody starts on a G4, moving to A4, Bb4, and C5. The bass line starts on a G3, moving to F3, E3, and D3. The piece is marked 'Piano' and 'f'.

There's a day in each year when I stay at home,
With the rich and the poor that sweet mem - 'ry clings,

The first line of lyrics is accompanied by a piano accompaniment. The melody is in the treble clef, and the piano accompaniment is in the bass clef. The piano accompaniment starts with a G3, moving to F3, E3, and D3. The piano accompaniment is marked 'p'.

Far from all world - ly strife, To steal a - way to an
Joys of those by - gone days, For when we're old so the

The second line of lyrics is accompanied by a piano accompaniment. The melody is in the treble clef, and the piano accompaniment is in the bass clef. The piano accompaniment starts with a G3, moving to F3, E3, and D3. The piano accompaniment is marked 'p'.

at - tic room, Where I spent my ear - ly life. With
say - ing goes, We re - turn to our child - ish ways. You

The third line of lyrics is accompanied by a piano accompaniment. The melody is in the treble clef, and the piano accompaniment is in the bass clef. The piano accompaniment starts with a G3, moving to F3, E3, and D3. The piano accompaniment is marked 'p'.

Copyright MCMXII by Jerome & Schwartz Publishing Co., 222 West 46th Str. N. Y.

Copyright, Canada, MCMXII by Jerome & Schwartz Publishing Co.

Propiedad para la Republica Mexicana de Jerome & Schwartz Publishing Co., New York. Depositada conforme a la ley

Paradise For Two

3

Words by
JEAN HAVEZ

Music by
TED. S. BARRON

Waltz Moderato

The piano introduction is in 3/4 time with a key signature of one sharp (F#). It begins with a forte (*f*) dynamic. The right hand features a series of chords and eighth-note patterns, while the left hand plays a steady bass line with dotted rhythms.

The first vocal line begins with a rest, followed by the lyrics: "Shad-ows are length-en-ing, twi-light is here, No one is list-en-ing, tell me dear heart,". The piano accompaniment starts with a *rall.* (rallentando) marking and a piano (*p*) dynamic. The right hand provides harmonic support with chords and moving lines, while the left hand continues with a steady bass line.

The second vocal line contains the lyrics: "Press your soft lips close to mine, ———— Cling to me dear, say you'll While your blue eyes look in mine, ———— Tell me the sto-ry I'm". The piano accompaniment continues with chords and moving lines in the right hand and a steady bass line in the left hand.

The final vocal line contains the lyrics: "ev-er be near, Oh won-der-ful girl di-vine. ———— long-ing to hear, The sto-ry of old Lang Syne. ————". The piano accompaniment concludes with chords and moving lines in the right hand and a steady bass line in the left hand.

Copyright MCMXII by Jerome & Schwartz Publishing Co., 222 West 46th Str. N. Y.
Copyright Canada MCMXII by Jerome & Schwartz Publishing Co.
Propiedad para la Republica Mexicana de Jerome & Schwartz Publishing Co., New York. Depositada conforme a la ley.

Par - a - dise, dear, in the life yet to come, Could ne'er be more
Dear-est, I bask in the sun of your smiles, The birds sing your

splen-did to see, _____ This is the dream of a
prais-es with glee, _____ What do I care for the

life time of love, This seems like heav - en to me. _____
world and its joys, This, dear, is heav - en to me. _____

REFRAIN

Some ros-es, some kiss-es, Some sun-light, some smiles, Some to-ken of ten-der-ness

shown,— Some love-light that's lin-ger-ing dear, in your eyes, Some-times when you

call me your own,— Some twi-light, some moonlight, Some walks in the lane, Some

vows that will ev-er be true.— Some ten-der ca-ress-es that some one pos-

sess-es, That's Par-a-dise, dear-ie, for two. Some two.—

TRY THESE ON YOUR PIANO

THE SENSATIONAL BALLAD HIT

If Ever I Forget You

Lyrics by
FRANK TANNEHILL Jr.

Music by
TED S. BARRON

Andante moderato

mf

The piano introduction is in 4/4 time, starting with a treble clef and a key signature of two flats (B-flat and E-flat). It features a melody in the right hand and a bass line in the left hand, both marked *mf*. The melody begins with a quarter note G4, followed by a quarter note A4, and then a series of eighth and sixteenth notes.

§ *Espressivo*

Love came to me un - bid - den, As
No prom - ise shall be bro - ken, For

The vocal line is in 4/4 time, starting with a treble clef and a key signature of two flats. The lyrics are written below the notes. The piano accompaniment is in 4/4 time, starting with a treble clef and a key signature of two flats, marked *mf*.

come the flow - ers at night, ——— And from my heart long
that is love's first blow, ——— No harsh word shall be

The vocal line continues with the lyrics. The piano accompaniment continues with the same melody and bass line.

Copyright MCMXII by Jerome & Schwartz Publishing Co., 222 West 46th St., N. Y.
Copyright Canada MCMXII by Jerome & Schwartz Publishing Co.
Propiedad para la Republica Mexicana de Jerome & Schwartz Publishing Co., New York. Depositada conforme a la ley.

For Sale Wherever Music is Sold
Or Sent Post Paid for 25c. per Copy by the Publishers

PUBLISHED
BY

JEROME & SCHWARTZ PUBLISHING CO.

222 WEST 46th STREET

NEW YORK