

The University of Maine  
**DigitalCommons@UMaine**

---

Vocal Popular Sheet Music Collection

Public domain (may be downloaded in full)

---

1903

# I Know A Lovely Garden : Song

Guy d' Hardelot  
*Composer*

Edward Teschemacher  
*Lyricist*

Follow this and additional works at: <https://digitalcommons.library.umaine.edu/mmb-vp>

---

## Recommended Citation

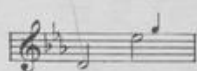
Hardelot, Guy d' and Teschemacher, Edward, "I Know A Lovely Garden : Song" (1903). *Vocal Popular Sheet Music Collection*. Score 4940.  
<https://digitalcommons.library.umaine.edu/mmb-vp/4940>

This Book is brought to you for free and open access by DigitalCommons@UMaine. It has been accepted for inclusion in Vocal Popular Sheet Music Collection by an authorized administrator of DigitalCommons@UMaine. For more information, please contact [um.library.technical.services@maine.edu](mailto:um.library.technical.services@maine.edu).

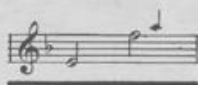
SUNG BY

MADAME CAMILLE SEYGARD

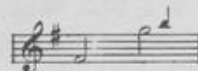
No 1 in E $\flat$



No 2 in F



No 3 in G



# I KNOW A LOVELY GARDEN

SONG

Words by Edward Teschemacher

Music by

## GUY D'HARDELOT.

PRICE 50<sup>R</sup> CTS

EXCEPT CANADA AND FOREIGN COUNTRIES

CHAPPELL & CO., INC.  
RKO BUILDING - ROCKEFELLER CENTER  
NEW YORK, N.Y.

CHAPPELL & CO., LTD.  
LONDON — PARIS  
SYDNEY

Copyright MCMIII by Chappell & Co

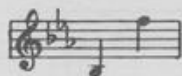
PRINTED IN U.S.A.

VP.018389

1903

I KNOW

THE FAMOUS "BELL" SONG WITH THE HAUNTING MELODY REFRAIN



# THE BELLS OF ST MARY'S

## SONG

Words by  
DOUGLAS FURBER

Music by  
A. EMMETT ADAMS

### REFRAIN

Bells of St Ma-ry's, Ah! hear they are call-ing, The

*Legato*

*sempre p*

young loves- the true loves, Who come from the sea, And

so my be- lov- ed, When red leaves are fall- ing,

The love-bells shall ring out,  
Ring out for you and me.

Copyright, 1917 by Ascherberg, Hopwood & Crew, Ltd.

You can obtain a copy of this song from your dealer

CHAPPELL & CO. INC., R K O Building, Rockefeller Center, New York, N.Y.

# I KNOW A LOVELY GARDEN

## SONG

Words by  
EDWARD TESCHEMACHER

Music by  
GUY D'HARDELLOT

Andante

mf *ben legato*

Red. \* Red. \*

The piano introduction consists of two systems of music. The first system features a treble clef staff with a whole rest, and a grand staff (treble and bass clefs) with a melodic line in the right hand and a bass line in the left hand. The second system continues the grand staff with similar melodic and bass lines. The tempo is marked 'Andante' and the dynamics include 'mf ben legato'. There are 'Red.' (Reduction) markings under the bass line in the first and second systems, and asterisks under the bass line in the second system.

mf

I know a love - - ly gar - - den,

Red. Red.

The vocal and piano accompaniment for the first line of the song is shown in two systems. The first system includes a vocal line in a treble clef with the lyrics 'I know a love - - ly gar - - den,' and a grand staff with piano accompaniment. The second system continues the piano accompaniment. The tempo is 'Andante' and the dynamics include 'mf'. There are 'Red.' (Reduction) markings under the bass line in both systems.

Copyright, MCMIII, by Chappell & Co.

C. 5052

ALL RIGHTS RESERVED  
Including Public Performance For Profit

Where bloom the sweet - - est flow - - ers, And

Red. \* Red. \* Red. \* Red. \*

there from morn to e - - ven,

Red. \* Red. \* Red. \* Red. \*

*p* I pass a - way the hours.....

*p* Red. \* Red. \*

*mf*  
*dolce legato*  
*col due pedale*

For

*p poco rit.*  
*colla voce*

love ..... is that sweet gar - - den, Be -

*ped.*

*f*  
*sempre f*

- neath ..... God's bound - less blue, ..... And

*ped.* *ped.* *ped.*

He looks down ..... and bless - es My

*Rit.* *f allargando* *mf con tenerezza*

life, ..... my love, and you! .....

*f allargando* *dolce legato*

*Rit.* \*

## SUCCESSFUL SONGS

**Because**

Words by EDWARD TESCHÉMACHER      No.1 in A<sup>b</sup>      No.2 in B<sup>b</sup>      No.3 in C      French words and Music by GUY d'HARDELLOT

*Poco adagio*

Be - cause you come to me with naught save love, And  
Lors - que j'en-tends ton pas, comme en un rê - ve Le

*mf rit. p legato*

Copyright, MCMII, by Chappell & Co., Ltd.

**Beloved, It Is Morn**

Words by EMILY HICKEY      No.1 in C      No.2 in D      No.3 in F      Music by FLORENCE AYLWARD

*Andante*

Be - lov - - - ed, it is morn!

*p mf*

Copyright, MDCCCXCVI, by Chappell & Co., Ltd.

**A Little Love, A Little Kiss**

English words by ADRIAN ROSS      No.1 in C      No.2 in D      No.3 in F      Music by LAO SILESU  
*Paroles de A. NILSON FYSHER*      (*Un Peu D'Amour*)

*Allegretto moderato*  
*p con semplicità*

When the scent - ed night of sum - mer cov - - - ers  
Dans Pa - ris où tout n'est que fi - li - - - e

*p Cello*

Copyright by L. Digoude-Diodet MCMXII, assigned to Chappell & Co. Ltd. MCMXII  
For Great Britain, the Colonies (including Canada) and the United States of America Chappell & Co. Ltd.

**Slave Song**

Words by E. NESBIT      No.1 in D minor      No.2 in E minor      No.3 in F minor      No.4 in G minor      Music by TERESA DEL RIEGO

*Andante moderato*

Bright bird, light bird, Bird with the pur - ple wing,

*p*

Copyright, MDCCCXCIX, by Chappell & Co.

**Where My Caravan Has Rested**

Words by EDWARD TESCHÉMACHER      Music by HERMANN LÖHR  
*Andante semplice*

Where my car - a - van has rest - ed,

*p*

Copyright, MCMIX, by Chappell & Co., Ltd.

**CHAPPELL & Co. INC., RKO Building, Rockefeller Center, New York, N.Y.**



# Four NEW WORTHWHILE STANDARD SONGS

## I'll Walk Beside You

Words by EDWARD LOCKTON

Music by ALAN MURRAY

Piano

*Slowly (with expression)*

I'll walk be - side you through the world to - day. While dreams add wings and flow - ers bless your way. I'll look in - to your eyes and hold your hand. I'll walk be - side you through the

*Copyright MCKELLIS by Chappell & Co., Ltd.*

## Star Of God

Words by FRED E. WEATHERLY

Music by ERIC COATES

Piano

*Andante religioso*

Lord of the by - gone cen - tur - ies, Thou once didst send a star That led the fleet of wand - 'ring men To Beth - le - hem a - far, Lord of those wild and

*Copyright MCKELLIS by Chappell & Co., Ltd.*

## In My Garden Of Auld Lang Syne

Words by GEORGE GRAFF

Music by JESSIE L. DEPPEN

Piano

*Moderato*

I don't have to trav - el far. Strange un - tread - en ways. I can find my Shang - hi - Lah. In my yea - ter - days. For

*Refrain (soft - ly)*

Men - 'y 40 - tils all the same blaz - ing thrills. In my -

*Copyright MCKELLIS by Chappell & Co., Inc., N. Y. C.*

## The Sun Would Shine Again

Words by ALICE GRAINGER

Music by WILBUR CHENOWETH

*Refrain*

I know the sun would nev - er shine for me if you were ev - er far a - way. And I would fix - ten for your voice. Though you should fall to an - swer me. I'd search the whole wide world for you, my dear. Un -

*Copyright MCKELLIS by Chappell & Co., Inc., N. Y. C.*

CHAPPELL

L. CO., INC.  
RKO BUILDING  
ROCKEFELLER  
CENTER - N. Y. C.

CHAPPELL  
L. CO. - LIT - 108908

MADE IN U. S. A.