

The University of Maine DigitalCommons@UMaine

Vocal Popular Sheet Music Collection

Public domain (may be downloaded in full)

1923

The Gondola And The Girl

Paul A Rubens
Composer

E. Ray Goetz
Lyricist

Paul
Lyricist

Follow this and additional works at: <https://digitalcommons.library.umaine.edu/mmb-vp>

Recommended Citation

Rubens, Paul A; Goetz, E. Ray; and Paul, "The Gondola And The Girl" (1923). *Vocal Popular Sheet Music Collection*. Score 2876.
<https://digitalcommons.library.umaine.edu/mmb-vp/2876>

This Book is brought to you for free and open access by DigitalCommons@UMaine. It has been accepted for inclusion in Vocal Popular Sheet Music Collection by an authorized administrator of DigitalCommons@UMaine. For more information, please contact um.library.technical.services@maine.edu.

THE GONDOLA AND THE GIRL

Words by PERCY GRAHAM PAUL & E. RAY GOETZ

Music by PAUL A. RUBENS

CHARLES FROHMAN
IN ASSOCIATION WITH
E. RAY GOETZ Presents

Irene Bordoni



in
LITTLE
MISS
BLUEBEARD

A Gay New Song-Play

by

Avery Hopwood

CHAPPELL-HARMS, INC.
185 Madison Ave., New York, N. Y.

Up 1923
G 9564

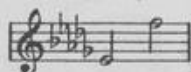
MADE IN
U. S. A.

THE SENSATIONAL SUCCESS OF THE "PIERROT PLAYERS"

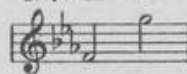
No. 1 in B \flat



No. 2 in D \flat



No. 3 in E \flat



THE WORLD IS WAITING FOR THE SUNRISE

Words by
EUGENE LOCKHART

SONG

Music by
ERNEST SEITZ

Slow - but with a certain swing
espressivo

Dear one The world is wait - ing for the

sun rise, Ev - 'ry rose is

heav - y with dew. The thrush on

high his sleepy mate is calling,
And my heart is calling you.

Copyright Canada 1919 by Chappell & Co. Ltd.
Copyright 1919 by Chappell & Co. Ltd.
New Edition Copyright 1919 by Chappell & Co. Ltd.

YOU CAN OBTAIN A COPY FROM YOUR DEALER

Price 40 cents net cash

The Gondola And The Girl

3

Words by
PERCY GRAHAM PAUL
and E. RAY GOETZ

Music by
PAUL A. RUBENS

Moderato

Piano

p dolce

p

He was a
This sly young

gon - do - lier, gay - ly ar - rayed, She was a
gon - do - lier, such things he said, He made the

lit - tle dear Ve - ne - tian maid. She had met him
lit - tle dear blush ro - sy red. "Oh!" she mur - mured

sev - 'ral times be - fore, on shore, And so, he be -
put me I im - plore, on shore, And as it dis -

p.

C-H 7450-3

Copyright 1923 by Chappell & Co., Ltd.,
Published by Chappell-Harms, Inc., New York

Bagaduce Music
Lending Library

Blue Hill, Maine

Donor:

737

-sought her, to come on the wa-ter, And
-pleased her, the first time he squeezed her, Next

then she knew him a lit-tle bit more.
time he squeezed her a lit-tle bit more.

Refrain (*gracefully*)

As they float-ed in that gon-do-la, thru' the twi-light soft and

dim, Of the maid he grew quite fond-o-la; And fond-o-la, she of

him. To a spot like a mill - pon - do - la, then he sped with oar a -

-twirl; When the maid would not res - pon - do - la, And de -

-mure - ly cried "go - on - do - la!" He pro - ceed - ed to ab -

-scon - do - la, In the gon - do - la with the girl. girl.

THE MOST BEAUTIFUL DREAMY WALTZ EVER
WRITTEN BY THIS CELEBRATED COMPOSER

ON MIAMI SHORE

(Golden Sands Of Miami)

Waltz Song

Words by
WILLIAM LE BARON

Music by
VICTOR JACOBI

REFRAIN

On the gold - en sands of old Mi-

with a lazy swing

p-mf

The first system of the refrain features a vocal line in treble clef and piano accompaniment in grand staff. The key signature is one sharp (F#) and the time signature is 3/4. The vocal line begins with a double bar line and a repeat sign. The piano accompaniment starts with a *p-mf* dynamic marking. The lyrics are "On the gold - en sands of old Mi-".

- a - mi shore,

sf

The second system continues the refrain. The vocal line has a long note on "a" and another on "mi". The piano accompaniment features a *sf* dynamic marking. The lyrics are "- a - mi shore,".

There I al - - ways find a girl whom

The third system concludes the refrain. The vocal line has a long note on "There" and another on "I". The piano accompaniment continues with the same accompaniment pattern. The lyrics are "There I al - - ways find a girl whom".

Copyright 1919 by Chappell & Co., Ltd.
All rights reserved