

The University of Maine DigitalCommons@UMaine

Vocal Popular Sheet Music Collection

Public domain (may be downloaded in full)

1921

Sweet Summer Breeze

Henry R Cohen
Composer

E. J Meyerson
Lyricist

Follow this and additional works at: <https://digitalcommons.library.umaine.edu/mmb-vp>

Recommended Citation

Cohen, Henry R and Meyerson, E. J, "Sweet Summer Breeze" (1921). *Vocal Popular Sheet Music Collection*. Score 1936.
<https://digitalcommons.library.umaine.edu/mmb-vp/1936>

This Book is brought to you for free and open access by DigitalCommons@UMaine. It has been accepted for inclusion in Vocal Popular Sheet Music Collection by an authorized administrator of DigitalCommons@UMaine. For more information, please contact um.library.technical.services@maine.edu.

SWEET SUMMER BREEZE



WORDS BY
E. J. MEYERSON
MUSIC BY
HENRY R. COHEN

PUBLISHED BY
ELL & ELL PUBLISHING CO.
SUPERBA THEATRE BLDG.
LOS ANGELES, CALIF.

Vp.007274

1921

Swe

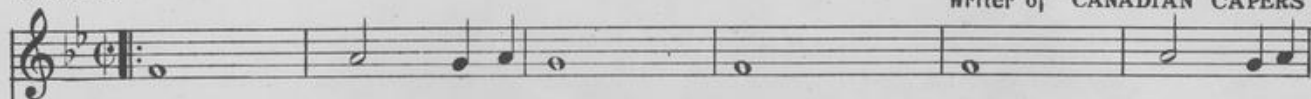
Why, Dear?

Lyric and Music by

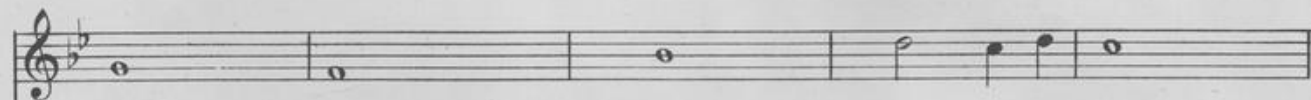
HENRY R. COHEN

Writer of "CANADIAN CAPERS"

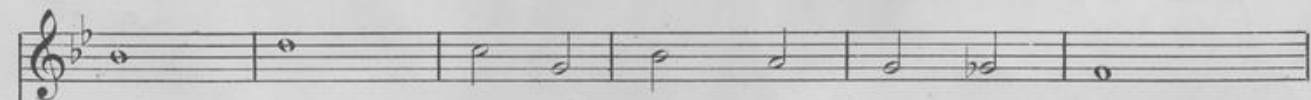
CHORUS



Why, dear am I lone - ly For you and you



on - ly Why, dear am I yearn -



- ing Each hour for your re - turn - ing, Why



Copyright MCMXXI by Ell & Ell Publishing Co. Los Angeles Cal.
International Copyright Secured.

Published by
ELL & ELL PUB. CO.
Los Angeles Calif.

Sweet Summer Breeze

3

Words by
E. J. MEYERSON
Moderato

Music by
HENRY R. COHEN

The piano introduction consists of two staves. The right hand features a rhythmic pattern of eighth and sixteenth notes, while the left hand provides a simple harmonic accompaniment with chords and single notes.

Sweet Sum - mer Breeze so warm and car - ess - ing, Whis - per - ing all day
When in the eve - ning I hear you sigh - ing Soft - ly — thru the

The first system of the vocal melody is written on a single staff. Below it, the piano accompaniment is shown on two staves, with the right hand playing chords and the left hand playing a bass line.

long, — It seems to me my se - cret you're guess - ing,
trees, — It seems you know that my heart is cry - ing

The second system of the vocal melody continues on a single staff. The piano accompaniment on two staves below provides harmonic support with chords and a steady bass line.

I've done my sweet - heart wrong; — Go find her for me
For her, Sweet Sum - mer Breeze. — Go gent - ly to her

The final system of the vocal melody is on a single staff. The piano accompaniment on two staves below concludes the piece with a final chord and a few notes in the bass line.

Copyright MCMXXI by Ell & Ell Publishing Co.
Superba Theatre Bldg., Los Angeles, Calif.
International Copyright Secured

Bagaduce Music
Lending Library

Blue Hill, Maine

Donor: 549

Sweet Sum - mer Breeze, This mes - sage to im - part: —
win - dow - pane And whis - per ten - der - ly —

Ask her to for - give me, please, And come back to my heart. —
That I want her back a - gain, For she be - longs to me. —

CHORUS

Sweet Sum - mer Breeze, — go find my

love for me, please, — And tell her I want to hear —

— her whis - per I love you, dear. — I need her,

skies are so gray, — Where smiled the sun yes - ter - day. —

— I beg you here on my knees, O Sweet Sum - mer Breeze, Go

bring back my love to me. — me. —

1 2

BETTY

(You Bet I Do)

By BEN LIGHT

CHORUS

Bet - ty, I'm wild a - bout you, Can't live with -

out you so it seems.

Your smile — so cap - ti - va - ting, — Just comes and

Copyright MCMXXI by Ell and Ell Publishing Co., Los Angeles
International Copyright Secured

Published by
ELL & ELL PUB. CO.
Los Angeles Calif.