

The University of Maine  
**DigitalCommons@UMaine**

---

Vocal Popular Sheet Music Collection

Public domain (may be downloaded in full)

---

1918

# When The Moon Begins To Shine : Through The Pines Of Carolin'

Ed G Nelson

*Composer*

William J Hart

*Lyricist*

Halton

*Illustrator*

Follow this and additional works at: <https://digitalcommons.library.umaine.edu/mmb-vp>

---

## Recommended Citation

Nelson, Ed G; Hart, William J; and Halton, "When The Moon Begins To Shine : Through The Pines Of Carolin'" (1918). *Vocal Popular Sheet Music Collection*. Score 1723.

<https://digitalcommons.library.umaine.edu/mmb-vp/1723>

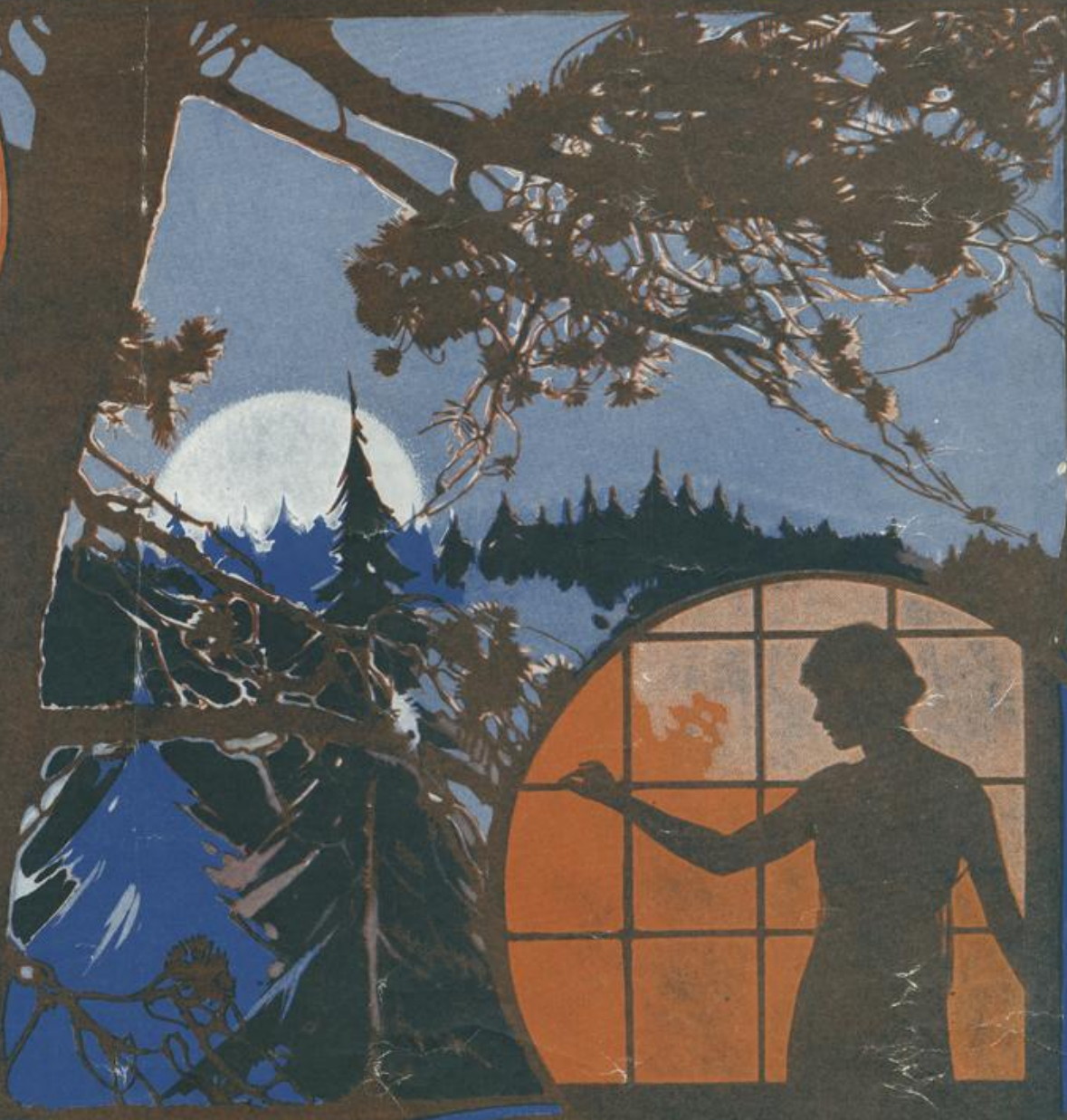
This Book is brought to you for free and open access by DigitalCommons@UMaine. It has been accepted for inclusion in Vocal Popular Sheet Music Collection by an authorized administrator of DigitalCommons@UMaine. For more information, please contact [um.library.technical.services@maine.edu](mailto:um.library.technical.services@maine.edu).

# WHEN THE MOON BEGINS TO SHINE

(THROUGH THE PINES OF CAROLIN')

WORDS BY  
WILL HART

MUSIC BY  
ED. NELSON



EEH1120M

Vp. 006226  
1918  
WHEN THE

*A. J. Stasny Music Co.*  
NEW YORK

# When The Moon Begins To Shine

(Through The Pines Of Carolin')

Words by  
WILL J. HART

Music by  
ED NELSON

Moderato

*f*

The piano introduction consists of two staves. The right hand features a melodic line with triplets and a steady accompaniment. The left hand provides a harmonic foundation with chords and moving lines.

Some-where in Car-o-lin' there's a sol-dier fine —  
Some-where in Nor-man-dy soon this lad will be —

*p*

The first system of the song includes a vocal line with lyrics and a piano accompaniment. The piano part features a melodic line in the right hand and a bass line in the left hand, with a piano (*p*) dynamic marking.

Train-ing un-der-neath the skies of blue, — He a-waits his chance just to go to France Where he'll  
Fight-ing for the old Red White and Blue, — And be-tween each shell he'll have time to tell Of a

The second system continues the vocal and piano accompaniment. The piano part maintains the harmonic structure established in the previous system.

do his best for lib - er - ty and you, — Now this lad seems full of glad-ness as he  
lit-tle girl back home he knows is true, — For he just re - ceived a let - ter it read:

The third system concludes the vocal and piano accompaniment. The piano part provides a final harmonic support for the vocal line.

stands out there a-lone But his heart is filled with sad-ness as he writes this let-ter home.  
 "Dear Sweet-heart of mine Oh this heart of mine feels bet-ter since you wrote these words di-vine."

**CHORUS**  
 When the moon be-gins to shine Through the pines of Car-o-lin' — That's when my heart starts in to pine for

you, — In the night when all is still As I stroll a-cross a hill I start in to dream of my lit-tle queen that's you Like the

skies a-bove I'm blue Ev-ry time I think of you, But the whis-p'ring pines they whis-per to me you're true — When the

moon be-gins to shine Through the pines of Car-o-lin', That's when my heart starts in to pine for you. — When the you. —

# Dance Of The Moon Birds.

By A. J. STASTNY.

Composer of { "MOTOR BOAT"  
"MEPHISTO RAG"

Tempo di Gavotta.

Copyright MCMXV by A. J. Stastny Music Co. Cleveland O. and New York.  
The publishers reserve the right to the use of this music or melody for any mechanical instrument. All Rights Reserved.