

The University of Maine DigitalCommons@UMaine

Vocal Popular Sheet Music Collection

Public domain (may be downloaded in full)

1917

Mother, my Dear

Bryceson Treharne
Composer

Katherine Nolen
Lyricist

Follow this and additional works at: <https://digitalcommons.library.umaine.edu/mmb-vp>

Recommended Citation

Treharne, Bryceson and Nolen, Katherine, "Mother, my Dear" (1917). *Vocal Popular Sheet Music Collection*. Score 4514.
<https://digitalcommons.library.umaine.edu/mmb-vp/4514>

This Book is brought to you for free and open access by DigitalCommons@UMaine. It has been accepted for inclusion in Vocal Popular Sheet Music Collection by an authorized administrator of DigitalCommons@UMaine. For more information, please contact um.library.technical.services@maine.edu.

Brunswick Records
5123

Columbia Records
A 2554

Edison Records
3625 & 82148

Pathé Records
22003

Victor Records
1137 & 64765

Vocalian Records
22036

MOTHER, MY DEAR

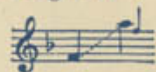


Song, with Piano Accompaniment

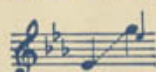
By

BRYCESON TREHARNE

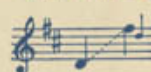
→ High in F



Medium in E \flat



Low in D



Price, 50 cents



Vp015764
1917
MOTHER

Sole Distributor:

G. Schirmer (Inc.)

New York

Mother, my Dear

*Poem by
Katherine Nolen

Music by
Byrceon Treharne

Slowly, with great expression

Piano

The piano introduction consists of two staves. The right hand features a melodic line with a *p* dynamic marking and a *poco rit.* instruction. The left hand provides a harmonic accompaniment with chords and moving lines.

I'm miss - ing the light in the eyes of you, I'm

The vocal line begins with a *p* dynamic. The piano accompaniment includes a *p a tempo* marking and a *mf* dynamic. A *Red ** marking is present below the piano part.

miss - ing your smile of cheer; And I'm miss - ing so much Just the

The piano accompaniment features a *Red ** marking below the staff.

balm of your touch, Oh, I'm miss - ing you, Moth - er, my dear.

The piano accompaniment includes a *p* dynamic marking.

* By permission

141 c

Copyright, 1917, by Harold Flammer, Inc.
International Copyright Secured



mf , *rit.* , *poco accel.*

Moth - er, my dear, Moth - er, my dear, Heart of gold that I'll

mf *p* *poco accel.*

mf *ten. poco rit.* *a tempo*

love my life through, Heart of gold that I'll love my life through; When I'm

mp *colla voce* *a tempo*

meno mosso *a tempo*

tempt - ed by wrong May God make me strong By send - ing a thought of

mf *l.h.* *f meno mosso* *a tempo*

La * *La* * *La* * *La* *

p rit.

you, by send - ing a thought of you.

dim. *rit.* *p* *p*

p a tempo

For the light in your eyes, that was

p a tempo

La *

love I know, And'twas heav - en it - self in your smile; There was

pow - er to bless In your slight - est ca - res That could make e - ven suf - fer - ing worth

La *

while. *mf* Moth - er, my dear, *p* Moth - er, my dear,

mf *p*

poco accel. *f*

Heart of gold that I'll love my life through, Heart of gold that I'll

poco accel. *mf*

ten. poco rit. *a tempo* *f*

love my life through; When I'm tempt-ed by wrong May God make me strong By

colla voce *a tempo* *l. h.* *f*

rit. * *rit.* * *rit.* * *rit.* *

cresc. *rit.*

send - ing a thought of you, by send - ing a thought of

rit.

you.

a tempo *pp*

mf dim. *l. h.* *ppp*

By The Bend Of The River

Bernhard Hoig

Clara Edwards

Languido e grazioso

Voice

By the bend of the riv - er, ——— Where rush - es are

Piano

dolce

grow - ing, ——— And wa - ters are flow - ing ——— Far down to the sea,

On a soft, balmy June - night, ——— In the shim - mer - ing moon - light ——— I know that my

Copyright, 1927, by G. Schirmer, Inc.
Printed in the U. S. A.

By the Bend of the River

By CLARA EDWARDS

A dreamy song of drifting, languid and graceful. "By the bend of the river, where rushes are growing, and waters are flowing far down to the sea, on a soft, balmy June night, in shimmering moonlight, I know that my true love is waiting for me." In 6/8-time, it has the rhythmic swing and sway of a barcarolle.

AVAILABLE FOR

Vocal Solo: High, G♭; Med., E♭; Low, C
Vocal Duet: Soprano and Alto (or Baritone).
Arranged by CARL DEIS.
Two-Part Chorus: For Sopranos and Altos (or Baritones). Arranged by CARL DEIS.
Orchestra in G♭

Write for descriptive analytical brochure
of Clara Edwards' Songs

In the Luxembourg Gardens

By

KATHLEEN LOCKHART MANNING

A Rêverie for Piano

SUNG BY

Paul Althouse
Alice Mock
Kathryn Meisle
Margery Maxwell
Charles Hackett
Robert Steel
Alma Peterson
Arthur Hackett Granville
Luella Melius
May Peterson
Renie Thornton
Inez Barbour
Tamaki Mura
and many other prominent singers

AVAILABLE FOR

Vocal Solo: High G, Low E♭
Four-Part Chorus: Men's Voices. Arranged
by Grace Helen Nash

A 745

In the Luxembourg Gardens

Rêverie

Words and Music by
Kathleen Lockhart Manning

Moderato L. es *very simply*

Voice

When shadow-fall I wan - der thro' the gar - dens,

Piano

A - mong the flow'rs and grass, ——— I lin - ger on the beau - ty

all a - round me. Then two lov - ers pass ———

Copyright, 1922, by G. Schirmer, Inc.
Printed in the U. S. A.