

The University of Maine
DigitalCommons@UMaine

Vocal Popular Sheet Music Collection

Public domain (may be downloaded in full)

1898

On the Road to Mandalay : A Barrack-Room Ballad

Henry Trevannion
Composer

Rudyard Kipling
Lyricist

Follow this and additional works at: <https://digitalcommons.library.umaine.edu/mmb-vp>

Recommended Citation

Trevannion, Henry and Kipling, Rudyard, "On the Road to Mandalay : A Barrack-Room Ballad" (1898). *Vocal Popular Sheet Music Collection*. Score 1321.
<https://digitalcommons.library.umaine.edu/mmb-vp/1321>

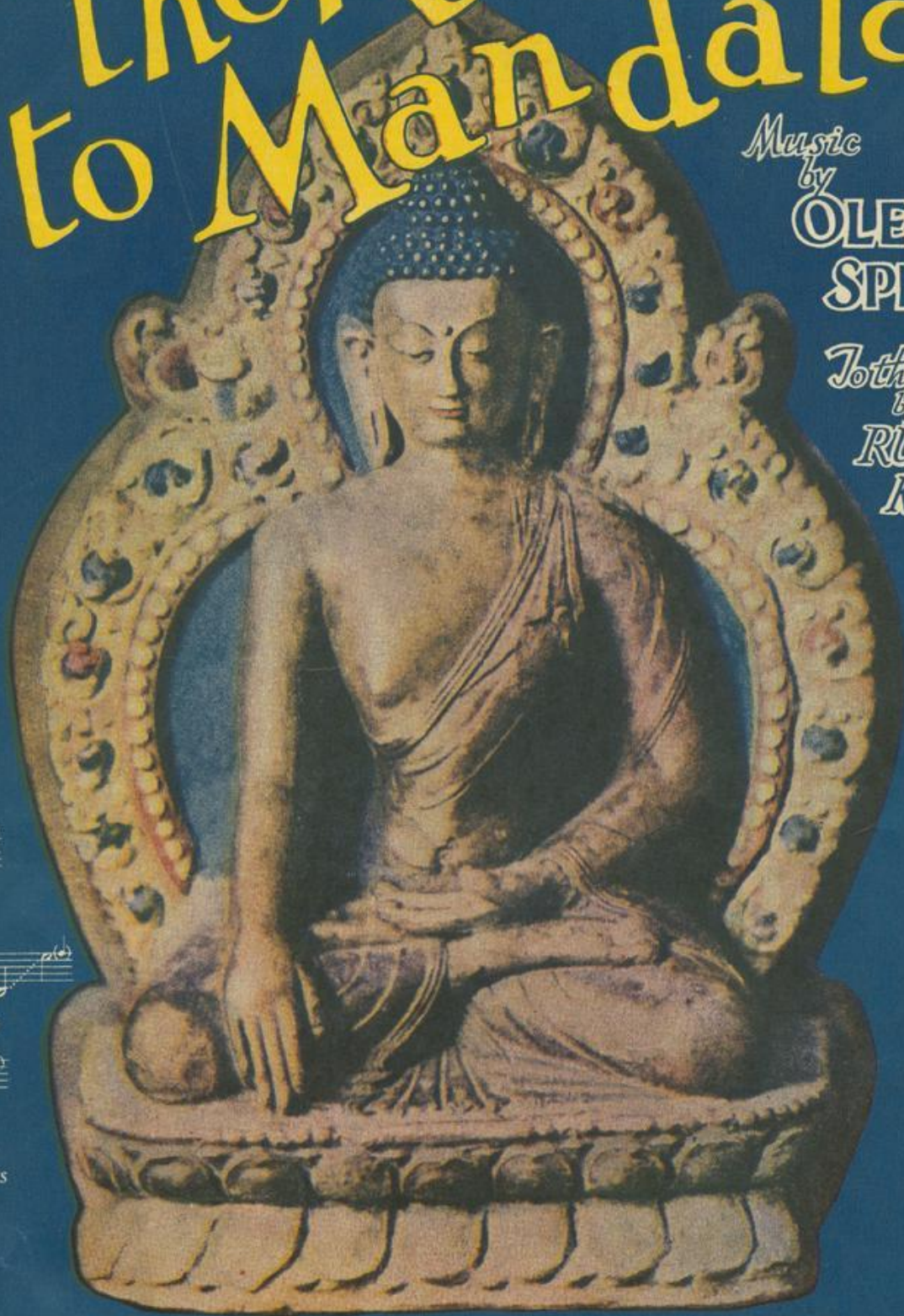
This Book is brought to you for free and open access by DigitalCommons@UMaine. It has been accepted for inclusion in Vocal Popular Sheet Music Collection by an authorized administrator of DigitalCommons@UMaine. For more information, please contact um.library.technical.services@maine.edu.

On the Road to Mandalay

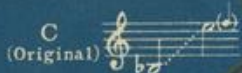
Oley Russell

Music
by
**OLEY
SPEAKS**

The poem
by
**RUDYARD
KIPLING**



High



(Original)

Medium



Low

Price, 60 cents
(In U. S. A.)

G. SCHIRMER, INC.
NEW YORK

Vp-004222

1907

ON THE

On the Road to Mandalay

From "Barrack-Room Ballads"
by Rudyard Kipling

Oley Speaks

Alla Marcia

Piano

The piano introduction is in 4/4 time, marked *ff* (fortissimo) and *Alla Marcia*. It features a rhythmic pattern of eighth notes in the right hand and quarter notes in the left hand. The key signature has two flats (B-flat and E-flat). The piece concludes with a *ritard.* (ritardando) and a final triplet of eighth notes.

Voice

1. By the old Moul-mein Pa - go - da, look-in'
2. 'Er - pet - ti - coat was yal-ler, an' 'er

a tempo *3*

The piano accompaniment for the first line features a triplet of eighth notes in the right hand and quarter notes in the left hand. Dynamics include *sf* (sforzando) and *p* (piano). The key signature remains two flats.

east-ward to the sea, There's a Bur - ma girl a -
lit - tle - cap was green, An' 'er name was Su - pi -

The piano accompaniment continues with the same triplet pattern. Dynamics include *mf* (mezzo-forte). The key signature remains two flats.

set-tin', an' I know she thinks o' me; For the wind is in the
yaw-lat- jes' the same as Thee-baw's Queen, An' I seed her first a -

The piano accompaniment concludes with a triplet of eighth notes in the right hand and quarter notes in the left hand. Dynamics include *mf*. The key signature remains two flats.

Copyright, 1907, by The John Church Company
37003 c International Copyright Secured



Copyright renewal assigned, 1935, to G. Schirmer, Inc.
Printed in the U. S. A.

All rights reserved, including the right
of public performance for profit.

palm-trees, an' the tem - ple-bells they say: "Come you back, you Brit - ish
smok - in' of a whack - in' white che - root, An' a - wast - in' Chris - tian

sol-dier; come you back to Man-da - lay, come you
kiss-es on an 'eath - en i - dol's foot, on an

rall. *dim.* *ff* *a tempo*
back to Man - da - lay!" Come you back to Man - da -
'eath - en i - dol's foot: Bloom - in' i - dol made o'

lay, mud - Where the old Flo - til - la lay: Can't you
What they called the great Gawd Budd - Pluck - y

cresc. *rall.*

'ear their pad-dles chunk-in' from Ran - goon to Man - da - lay? On the
 lot she cared for i - dols when I kissed her where she stood! On the

cresc. *rall.* *piu rall.*

ff *a tempo*

road to Man - da - lay, — Where the fly - in' - fish - es play, An' the
 road to Man - da - lay, — Where the fly - in' - fish - es play, An' the

a tempo *ff*

rall.

dawn comes up like thun - der out of Chi - na 'crost the
 dawn comes up like thun - der out of Chi - na 'crost the

rall.

a tempo

bay.
 bay.

a tempo *rit.*

Poco meno mosso *mf*

3. Ship me some - wheres east of

Su - ez where the best is - like the worst, Where there

aren't no Ten Com - mand-ments, an' a man can raise a

rall.

thirst; For the tem - ple-bells are call - in', an' its

a tempo

p_{r.h.}

there that I would be- By the old Moul - mein Pa -

-go - da, look-in' la - zy at the sea, look-in'

la - zy at the sea; Come you back to Man - da -

rall. *dim.* *pp* **Tempo 1°**

lay, Where the old Flo - til - la lay, Can't you

rall.

'ear their pad - dles chunk - in' from Ran - goon to Man - da -

rall.

8.....

ff. *a tempo*

- lay? On the road to Man - da - lay, — Where the

ff. *a tempo*

3

3

cresc.

fly - in' - fish - es play, An' the dawn comes up like

cresc.

8.....

ff rall. *ten.* \wedge \wedge

thun - der out of Chi - na 'crost the bay.

ff rall. *cresc.* *colla voce*

3

8.....

SONGS

by **OLEY SPEAKS**

	High		Medium		Low		Price
	Key	Range	Key	Range	Key	Range	
At starlight-time	G	d-g	F	c-F	E \flat	b \flat -E \flat	.50
Back again in Eldon	F	F-ga	E \flat	E \flat -Fg	C	c-DE	.50
†The bells of youth	F	d-g			D	b-E	.60
Bend low, O dusky night	A	E-F#			F	c-D	.60
Call of the lark	F	E-g			C	b-D	.50
Charity	C	c-F	C	c-F			.60
†Elysium	G	d-g			E \flat	b \flat -E \flat	.60
Eternity	B \flat	c-gbb	G	a-Eg	G	a-Eg	.50
An evening song	G	d-g	F	c-F	E \flat	b \flat -E \flat	.60
Everywhere	D	d-g	C	c-F	A	a-D	.50
For a day	C	cd-g			B \flat	b \flat c-F	.60
For love and thee	F	d-ga			D	b-EF#	.60
A garden idyl	A	E \flat -gab			E \flat	b \flat -DE \flat	.50
Go 'long, chile, to Sleepy-Town	G	d-g			E \flat	b \flat -E \flat	.50
Her rose	G	d-g			E \flat	b \flat -E \flat	.60
The hills of Dawn	D	d-ab			A \flat	ab-E \flat F	.50
If I knew	A \flat	d-ga			F	b-EF	.50
It came upon the midnight clear	C	d-g			A	b-E	.60
The joys of June	F	d-g			E \flat	c-F	.60
June-time	F	c-a			D	a-F#	.60
The lane to Ballybree	D	d-gb			B	b \flat -E \flat g	.50
The lassie I love best	F	c-g			D	a-E	.60
Life	A	E-F#			F	c-D	.50
†Life's joys	G	d-g	G	d-g	E \flat	b \flat -E \flat	.50
Life's twilight	A \flat	d-Fa	G	c#-Eg	F	b-DF	.60
The little Christ is coming down			C	c#-E			.50
Little house o' dreams	A	d#-F#a	G	c#-Eg	F	b-DF	.50
A little way to walk with you	C	d-g			A	b-E	.60
Love of yesteryear	C	F#-aba	A	d#-FF#	G	c#-E \flat E	.60
A lover's song	F	c-F			D \flat	ab-D \flat	.60
Memory of you	G	d-ga	F	c-Fg	D	a-DE	.50
A message	F	d-g			C	a-D	.50
†Morning. Le jour. f.c.	Dm	d-F#a	Cm	c-Eg	B \flat m	b \flat -DF	.50
Mother	G	c-g			E \flat	ab-E \flat	.50
My homeland	C	F-g	B \flat	E \flat -F	A \flat	db-E \flat	.60
Never a winter but sang of the May	F	cF-F			D	a-d	.50
The night has a thousand eyes	C	G-F			A	E-D	.50
Ohio			F	c-D			.40
†On the road to Mandalay	E \flat	db-gab	C	b \flat -EF	B \flat	ab-DE \flat	.60
Over the hills and home again	E \flat	E \flat -g	C	c-E	B \flat	b \flat -D	.50
†Pegging along		d-Ea	F	c-Dg	E \flat	b \flat -CF	.50
The quiet road	G	d-g			E \flat	b \flat -E \flat	.50
Rainbow-land	B \flat	d-g			G	b-E	.50
Realization	D	d-a	C	c-g	A \flat	ab-E \flat	.60
Reveries	G	d-g			E \flat	b \flat -E \flat	.50
Roses after rain	F	E-g	E \flat	d-F	C	b-D	.50
The secret	F	cF-g			D	ad-E	.60
Serenade	B \flat	EF-g \flat			G	cd-E \flat	.75
Since we parted	B \flat	F-g			G	d-E	.50
A song of gladness	C	c-g			A	a-E	.50
Song of spring	C	d-a			A \flat	b \flat -F	.60
Song of waiting	A \flat	E \flat -ab	F	c-F	E \flat	b \flat -E \flat	.60
Star-eyes	G	d-g	F	c-F	E \flat	b \flat -E \flat	.50
The star of hope. A Christ-child legend	G	d-g	F	c-F	E \flat	b \flat -E \flat	.50
Summer in the heart	D	d-a			B \flat	b \flat -F	.60
Summer skies	B \flat	d-F			G	b-D	.50
†Sunshine and happiness	C	d-a			G	a-E	.50
†Sylvia	G	d-g	F	c-F	D \flat	ab-D \flat	.50
The thought of you	G	d-a	F	c-g	D	a-E	.60
To one unknown	G	d-g			E \flat	b \flat -E \flat	.60
Toward the sunrise	G	d-gb			E \flat	b \flat -E \flat g	.60
To you	G	d-F#	F	c-E	E \flat	b \flat -D	.50
Under the wide and starry sky	Dm	c#-g			B \flat m	a-E \flat	.40
The vagabond	C	d-ga	B \flat	c-Fg	A \flat	b \flat -E \flat F	.50
Were I a king!	C	d-ga	F	c-Fg	D	a-DE	.50
When all the bonny birds	F	c-Fa			D	a-DF#	.60
When June days come again	G	c#-g			E \flat	a-E \flat	.60
†When the boys come home	E \flat	E \flat -abbb	C	c-Fg	B \flat	b \flat -E \flat F	.60
Where you, beloved, are	G	d-g	F	c-F	D	a-D	.50
With the dreams of May	G	d-g			E \flat	b \flat -E \flat	.60
Your smile	G	d-g	F	c-F	E \flat	b \flat -E \flat	.60

†Orchestral accompaniment available

G. SCHIRMER, Inc.
NEW YORK