

The University of Maine  
DigitalCommons@UMaine

---

Vocal Popular Sheet Music Collection

Public domain (may be downloaded in full)

---

1922

# E'en As The Flower : Adapted from the poem "The Passion Flower"

Frederic Knight Logan  
*Composer*

Laura Blackburn  
*Lyricist*

Follow this and additional works at: <https://digitalcommons.library.umaine.edu/mmb-vp>

---

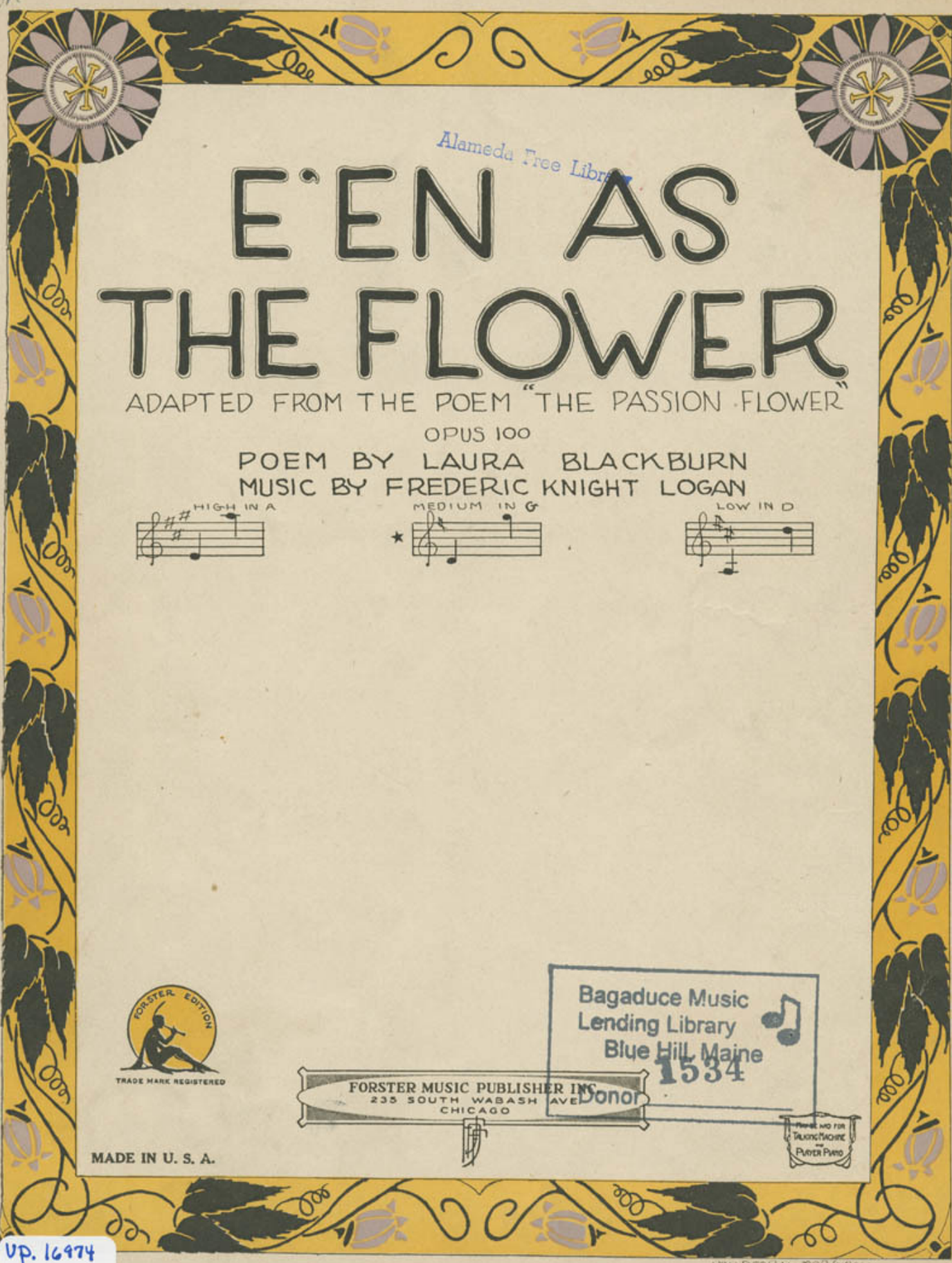
## Recommended Citation

Logan, Frederic Knight and Blackburn, Laura, "E'en As The Flower : Adapted from the poem "The Passion Flower"" (1922). *Vocal Popular Sheet Music Collection*. Score 4770.  
<https://digitalcommons.library.umaine.edu/mmb-vp/4770>

This Book is brought to you for free and open access by DigitalCommons@UMaine. It has been accepted for inclusion in Vocal Popular Sheet Music Collection by an authorized administrator of DigitalCommons@UMaine. For more information, please contact [um.library.technical.services@maine.edu](mailto:um.library.technical.services@maine.edu).

Donald F. Pearl  
May 27 - 1924

E



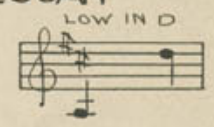
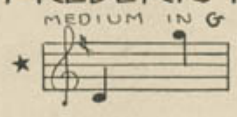
Alameda Free Library

# E'EN AS THE FLOWER

ADAPTED FROM THE POEM "THE PASSION FLOWER"

OPUS 100

POEM BY LAURA BLACKBURN  
MUSIC BY FREDERIC KNIGHT LOGAN



MADE IN U. S. A.

FORSTER MUSIC PUBLISHER INC.  
235 SOUTH WABASH AVE  
CHICAGO

Bagaduce Music  
Lending Library  
Blue Hill, Maine  
1534  
Donor



vp. 16974  
1922  
E'EN

WINDY CITY MUSIC CO.

# FREDERIC KNIGHT LOGAN SONGS

## In Fancy's Bower

1st. Excerpt.

*Moderato con espressione.*

Like zephyrs blown from some fair land, Thro' sandal groves so rare,

*Marcato la melodia*

2nd.

Excerpt.

*teneramente*

Fan-cy's Bow'r I fain would lin-ger To dream sweet-heart, to dream of you. And

*teneramente*

## Oh, Vision Fair!

1st. Excerpt.

*p Andante Con Calmato*

*a tempo*

Soft-ly fall the shades of twi-ght, O'er the earth and sul-len sea; While the glow from drift-

*p* *rit.* *a tempo*

2nd. Excerpt

*agitated*

*cresc.*

arms, And gaze in-to thy lov-ing eyes; I press thee fond-ly, to my heart, And

*agitated* *cresc.*

GET IT FROM YOUR MUSIC DEALER. PRICE 40c PER COPY. IF FOR ANY REASON HE WON'T SUPPLY YOU MAIL AMOUNT STATED DIRECT TO THE PUBLISHER

FORSTER MUSIC PUBLISHER, Inc., 736 South Michigan Avenue, CHICAGO, ILL.

SEND 3c STAMP FOR BEAUTIFUL ILLUSTRATED THEMATIC CATALOG.



# E'en As The Flower

Adapted from the poem "THE PASSION FLOWER"

3

High Voice

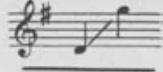


Low Voice



Poem by  
LAURA BLACKBURN

Medium Voice



Music by  
FREDERIC KNIGHT LOGAN  
Opus 100

Moderato

Alameda Free Library

Thou

low - ly, meek and love - ly flow'r, But

yes - ter - day at eve - ning's hour As

trudg - ing up - ward with my load, I saw thee

Copyright, MCMXXII, by Forster Music Pub., Inc., Chicago, Ill.

International Copyright Secured

Made in U.S.A.

All Rights Reserved

bloom - ing gent - ly by the road. I

*p*  
stayed my steps to won - der there \_\_\_\_\_ That

beau - ty so su - preme - ly rare \_\_\_\_\_ Should waste its

lov - li - ness and won - drous love, \_\_\_\_\_ Its

*f con amore*

won - drous love on me, That

beau - ty so su-preme-ly fair, so fair;

*f* *slowly* R.H. L.H.

*f Lento* E'en as the Flow'r, E'en as the Flow'r Of Cal-var-

*p* *rit.*

*a tempo* y.

*a tempo* R.H. L.H. *pp*

# FREDERIC KNIGHT LOGAN SONGS

## SYLVIA

*Dedicated to and sung by Mme. Amelita Galli-Curci.*

1st. Excerpt.

*a tempo*

Lia - ten to the fal - ry volc - es, As they float on wings of gold; Sing - ing love - songs

*a tempo*

2nd. Excerpt.

*lightly*

Sweat - er songs have ne'er been told Danc - ing 'neath the moon - beams glances, To the crime of

## Rose of my Heart

1st. Excerpt. *Molto con espressione.*

It was a rose That bloom'd in wondrous beau - ty, All in a gar - den fair;

2nd. Excerpt.

*Deciso*

Close to my heart I press'd it. My longing soul was thrill'd And life was born a - new,

*Deciso*

GET IT FROM YOUR MUSIC DEALER. PRICE 40c PER COPY. IF FOR ANY REASON HE  
WON'T SUPPLY YOU MAIL AMOUNT STATED DIRECT TO THE PUBLISHER

FORSTER MUSIC PUBLISHER, Inc., 736 South Michigan Avenue, CHICAGO, ILL.

SEND 3c STAMP FOR BEAUTIFUL ILLUSTRATED THEMATIC CATALOG.



# FREDERIC KNIGHT LOGAN SONGS

## Love's Springtime

Allegretto con grazia

1st. Excerpt.

Come, my love, the spring is wak - ing O'er hill, and by - the sea;  
Come, my love, where per - fum'd breez - es Are gently float - ing by,

2d. Excerpt.

thee. I'll weave a gar - land of ro - ses, Thy crown  
fly. There let us wan - der for - ev - er, Just you,

*Faster*  
*a tempo*  
*Faster*

## My Heart's Desire

Andante con espressione

1st. Excerpt.

Deep In my heart a fond hope lies, — Il - lum - in'd by thy beaming eyes. Thy voice like an - gel

*a tempo*  
*a tempo*

2d. Excerpt.

feel thy throbbing heart Close to mine, — no more to part, — What per -

*ff*

GET IT FROM YOUR MUSIC DEALER. PRICE 40c PER COPY. IF FOR ANY REASON HE WON'T SUPPLY YOU MAIL AMOUNT STATED DIRECT TO THE PUBLISHER

FORSTER MUSIC PUBLISHER, Inc., 736 South Michigan Avenue, CHICAGO, ILL.

SEND 3c STAMP FOR BEAUTIFUL ILLUSTRATED THEMATIC CATALOG,



# FREDERIC KNIGHT LOGAN SONGS

## THRU AZURE BLUE

*Dedicated to and sung by Miss Rosa Raisa.*

1st. Excerpt

*p*  
See how the clouds laz-i-ly float, Drifting along thru azure blue, And the soft southern breeze lifts each flow'r,  
*legato*  
Use 2 Pedals

2d. Excerpt

*Grandioso*  
Tis the voice of Love, the fond voice of Love—That calls the morning of—the year. *f* Still on they float  
*trem.* *broad* *rit.* *a tempo*  
Use 2 Pedals

## PALE MOON

An Indian Love-Song.

*Dedicated to and sung by Miss Rosa Raisa*

1st. Excerpt.

*Plaintively*  
Out of my lodge at even-tide—Mong the sobbing pine—Foot-steps ech-o by my side

2nd. Excerpt.

*Very dramatic and slow*  
Speak to thy love for-saken, Thy spir-it mantle throw— Ere thou the great white dawn a-waken, And to the  
*with decision, very broad*

GET IT FROM YOUR MUSIC DEALER. PRICE 40c PER COPY. IF FOR ANY REASON HE WON'T SUPPLY YOU MAIL AMOUNT STATED DIRECT TO THE PUBLISHER

FORSTER MUSIC PUBLISHER, Inc., 736 South Michigan Avenue, CHICAGO, ILL.

SEND 3c STAMP FOR BEAUTIFUL ILLUSTRATED THEMATIC CATALOG.