

The University of Maine DigitalCommons@UMaine

Vocal Popular Sheet Music Collection

Public domain (may be downloaded in full)

1907

In Old Madrid

H Trotere
Composer

Clifton Bingham
Lyricist

Follow this and additional works at: <https://digitalcommons.library.umaine.edu/mmb-vp>

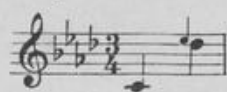
Recommended Citation

Trotere, H and Bingham, Clifton, "In Old Madrid" (1907). *Vocal Popular Sheet Music Collection*. Score 850.
<https://digitalcommons.library.umaine.edu/mmb-vp/850>

This Book is brought to you for free and open access by DigitalCommons@UMaine. It has been accepted for inclusion in Vocal Popular Sheet Music Collection by an authorized administrator of DigitalCommons@UMaine. For more information, please contact um.library.technical.services@maine.edu.

UNEXCELLED EDITION

Key of F minor



IN OLD MADRID

—...—
SONG

Words by

Clifton Bingham

Music by

H. TROTERÈ

MORRIS
USIC CO
1028 ARCH ST.
PHILA., PA.

MADE IN U.S.A.

Vp. 002622
1907
IN OLD

IN OLD MADRID.

Contralto in F Minor.

Words by CLIFTON BINGHAM.

Revised by RUDOLF THALER.

Tempo di Bolero.



Music by H. TROTÈRE.

Long years a - go, in old Mad - rid, Where soft - ly
Far, far a - way from old Mad - rid, Her lov - er

sighs of love the light gui - tar, Two spark ling eyes a lat - tice
fell, long years a - go, for Spain; A con - vent veil those sweet eyes

hid, Two eyes as dark - ly bright as love's own star! There,
hid; And all the vows that love had sigh'd were vain! But

on the case-ment lodge when day was o'er, A ti - ny hand was
still, be - tween the dusk and night 'tis said, Her white hand opes the

light - ly laid; A face look'd out as from the riv - er shore, There
lat - tice wide, The faint sweet ech - o of that ser - e - nade, Floats

a tempo

stole a ten - der ser - e - nade! Rang the lov - ers
weird - ly o'er the mist - y tide Still she lists her

colla voce *a tempo*

hap - py song Light and low from shore to shore, But
lov - ers song, Still he sings up - on the shore, Though

Bagaduce Music
Lending Library
Blue Hill, Maine
Donor: **562**

ah! the riv - er flow'd a - long Be - tween them ev - er
flows a stream than all more strong Be - tween them ev - er

more.
more!

rall.

Con tenerezza

Come my love, the stars are shin - ing, Time is fly - ing, Love is sigh - ing,

a tempo

Come, for thee a heart is pin - ing, Here a - lone I wait for thee!

rall. *p* *a tempo*

2

thee. a - lone I wait, I wait for thee, my

a tempo

love. I wait for thee; O come, my love, I wait for

thee, I wait for thee, my love, for thee!

dim.

colla voce

L.H.

R.H.

dim. *p* *e* *L.H.* *pp* *rall.* *ppp*

R.H.S.

TRY THIS ON YOUR PIANO

Night After Night

Uke arr. by A. J. Franchini

C Tuning
G C E A

GENE JAMES
& GEO. BROWN

CHORUS

Night af-ter night I won - der if you will ev - er come

back to me, Night af-ter night I

won - der too, Who you are with and if you're true;

Copyright 1928 by Morris Music Pub. Co., 1028 Arch St., Phila., Pa.
The Publishers Reserve the right to the use of this Music or Melody for Mechanical Instruments
International Copyright Secured All Rights Reserved

For Sale By All Dealers

ASK FOR THE RECORD

ASK FOR THE PIANO ROLL