

The University of Maine
DigitalCommons@UMaine

Vocal Popular Sheet Music Collection

Public domain (may be downloaded in full)

1913

The Woman Thou Gavest Me

W. C Powell

Composer

Will D Cobb

Lyricist

Follow this and additional works at: <https://digitalcommons.library.umaine.edu/mmb-vp>

Recommended Citation

Powell, W. C and Cobb, Will D, "The Woman Thou Gavest Me" (1913). *Vocal Popular Sheet Music Collection*. Score 4374.
<https://digitalcommons.library.umaine.edu/mmb-vp/4374>

This Book is brought to you for free and open access by DigitalCommons@UMaine. It has been accepted for inclusion in Vocal Popular Sheet Music Collection by an authorized administrator of DigitalCommons@UMaine. For more information, please contact um.library.technical.services@maine.edu.

THE WOMAN THOU GAVEST ME



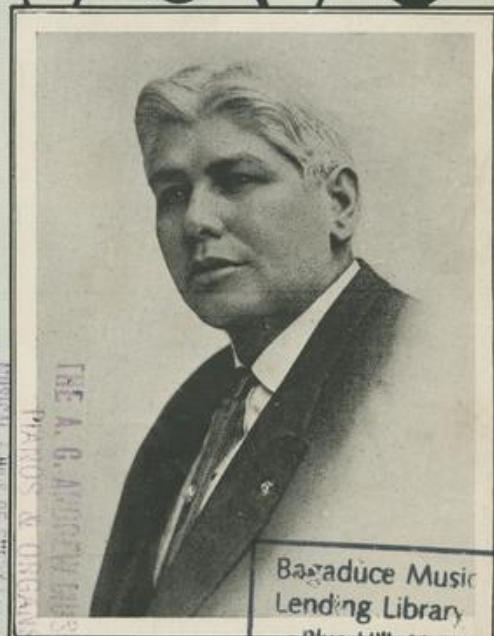
MR
HAL CAINE
WHOSE
WONDERFUL
NOVEL THAT
STIRRED TWO
CONTINENTS
INSPIRED
THIS SONG

WORDS BY

WILL D. COBB

MUSIC BY

WM. C. POWELL



THE A. G. ...
PIANOS & ORGANS

Baraduce Music
Lending Library

Blue Hill, Mass.

INTRODUCED BY

MR. R. JOSE

Vp. 014607
1913
Wom

Dedicated to Mr. & Mrs. Austin D. Brennan, New York.

3

The Woman Thou Gavest Me.

Words by
Will D. Cobb.

Music by
W. C. Powell.

Andante espressivo.

Piano. *mf*

The piano introduction is in G major, 2/4 time, and consists of 8 measures. It features a melody in the right hand and a supporting bass line in the left hand. The melody begins with a half note G4, followed by quarter notes A4, B4, and C5, then a half note D5. The bass line starts with a half note G2, followed by quarter notes A2, B2, and C3, then a half note D3.

The hon - ey - moon bright - ly is beam - - ing, On —
The mile stones of time are not man - - y, From the

The first system of the vocal and piano accompaniment. The vocal line is in G major, 2/4 time, and consists of 8 measures. The piano accompaniment is in G major, 2/4 time, and consists of 8 measures. The piano part begins with a half note G2, followed by quarter notes A2, B2, and C3, then a half note D3.

two that to - day are now one; — He stands by the win - dow half
spring to the win - ter of life; — Too soon comesthe end of the

The second system of the vocal and piano accompaniment. The vocal line is in G major, 2/4 time, and consists of 8 measures. The piano accompaniment is in G major, 2/4 time, and consists of 8 measures. The piano part begins with a half note G2, followed by quarter notes A2, B2, and C3, then a half note D3.

dream - ing, Gaz - ing out on the slow set - ting sun. — His
jour - ney, To the Heav - en matched hus - band and wife. — Her

The third system of the vocal and piano accompaniment. The vocal line is in G major, 2/4 time, and consists of 8 measures. The piano accompaniment is in G major, 2/4 time, and consists of 8 measures. The piano part begins with a half note G2, followed by quarter notes A2, B2, and C3, then a half note D3.

3

Copyright MCMXIII by P. J. Howley Music Co.
International Copyright Secured. All Rights Reserved.

arm a - round her all pro - tect - - ing, The
tress - es his fond hand car - ess - - ing, Once

world knew no hap - pi - er pair, — As he looked up a - bove, His lips
gol - den now sil - vered as snow, — He bowed — his proud head, And with

tremb - ling with love, And mur - mured with al - most a — pray'r. —
grat - i - tude said, As he said in the glad long a - go. —

Chorus.

It's a won - der - ful world of sun - shine with the wom - an thou

gav - est me, ——— Full of joy that came all at one

time, With the wom-an thou gav - est me, ——— Mine to have and to hold for-

ev - er, Grand Rul-er of my des-ti - ny, ——— Tho' it's hu-man to

err, Make me worthy of her, The wom-an thou gav - est me. ———

L.H.

rit.

TRY THESE OVER ON YOUR PIANO

The Weary Wanderer

By W. C. POWELL.

Andante 'con espressione.

pp

The score for 'The Weary Wanderer' is written for piano in 3/4 time. It begins with a dynamic marking of *pp* and a tempo instruction of 'Andante 'con espressione'. The music is composed of six systems of staves, each with a treble and bass clef. The melody is primarily in the treble clef, while the accompaniment is in the bass clef, featuring a steady, rhythmic pattern.

Moon, Moon, Moon.

by
DAVE MARION
arr. by Victor Barnstable.

CHORUS

Moon, Moon, Moon, Moon, Moon, Moon,

When you think no one is nigh, Take a peep up
at the sky, There's a great big round face watch - ing,
Ev' - ry time you spoon, He's here and there and

The score for 'Moon, Moon, Moon' includes a vocal line and a piano accompaniment. The vocal line is in 2/4 time and features the chorus lyrics. The piano accompaniment is in 2/4 time and provides a harmonic and rhythmic foundation for the vocal melody. The score is divided into systems, with the piano part starting before the vocal line begins.

Mignon.

NOVELETTE TWO-STEP.

By W. C. POWELL.
Composer of "La Grenouille"
"The Goodbye etc."

Tempo di marcia.

rit. *al tempo*

The score for 'Mignon' is a two-step novelle in 2/4 time. It starts with a tempo instruction of 'Tempo di marcia'. The score consists of six systems of staves. The first system includes a dynamic marking of *pp* and a tempo change to 'al tempo'. The music is characterized by a rhythmic, march-like quality with a mix of eighth and sixteenth notes.

The Story of the Rose

Words by "ALICE"

Mus. by ANDREW MACK

CHORUS. Moderato.

Heart of my heart, I love you, Life would be naught with-out you,
Light of my life, my dar - ling, I love you, I love you.
I can for - get you nev - er, From you I nev' - er can sev - er.
Say you'll be mine for - ev - er, I love you.

The score for 'The Story of the Rose' includes a vocal line and a piano accompaniment. The vocal line is in 2/4 time and features the chorus lyrics. The piano accompaniment is in 2/4 time and provides a harmonic and rhythmic foundation for the vocal melody. The score is divided into systems, with the piano part starting before the vocal line begins.

The Story, etc. &

FOR SALE WHEREVER MUSIC IS SOLD