

The University of Maine DigitalCommons@UMaine

Vocal Popular Sheet Music Collection

Public domain (may be downloaded in full)

1897

Laughing Song

Charles E Pratt

Arranger

John Crook

Composer

Dance

Lyricist

Follow this and additional works at: <https://digitalcommons.library.umaine.edu/mmb-vp>

Recommended Citation

Pratt, Charles E; Crook, John; and Dance, "Laughing Song" (1897). *Vocal Popular Sheet Music Collection*. Score 3635.
<https://digitalcommons.library.umaine.edu/mmb-vp/3635>

This Book is brought to you for free and open access by DigitalCommons@UMaine. It has been accepted for inclusion in Vocal Popular Sheet Music Collection by an authorized administrator of DigitalCommons@UMaine. For more information, please contact um.library.technical.services@maine.edu.

Alice Atherton's LAUGHING SONG



SUNG AT
**KOSTER
& BIAL'S.**

MUSIC BY
JOHN CROOK.
WORDS BY
GEO. DANCE.

SUPPLEMENT TO
THE NEW YORK JOURNAL
AND ADVERTISER,
DECEMBER 12 1897.

Copyrighted by
ALICE ATHERTON EDQUIN
1897

ALL SINGING AND ACTING
RIGHTS RESERVED.

Vp.012113
1897
LAU

LAUGHING SONG.

Words by George Dance

Music by John Crook.

Arr by Chas. E. Pratt.

Allegro

The piano introduction consists of two staves of music. The right hand features a melody with eighth and sixteenth notes, while the left hand provides a rhythmic accompaniment with chords and single notes. The music is in a 3/4 time signature and a key signature of two flats (B-flat and E-flat).

The vocal line begins with a soprano clef and a key signature of two flats. The melody is written on a single staff, starting with a treble clef and a key signature of two flats. The lyrics are: "Some say the world is full of trou-ble Full of sor row full of care, But

1 Some say the world is full of trou-ble Full of sor row full of care, But
2 in the well bred up per ci cles Boisterous laughter is tabooed, And
3 in the sol emn court of jus tice. An-guish does not reign a lone. For

The piano accompaniment for the first line of lyrics consists of two staves of music. The right hand continues the melody from the vocal line, and the left hand provides a rhythmic accompaniment with chords and single notes. The music is in a 3/4 time signature and a key signature of two flats.

The vocal line continues with a soprano clef and a key signature of two flats. The melody is written on a single staff, starting with a treble clef and a key signature of two flats. The lyrics are: "I have found in my short jour ney, Lots of laugh ter ev ry where.

I have found in my short jour ney, Lots of laugh ter ev ry where.
she who goes be yond a sim per, Must in deed be ve ry rude
judg-es love a lit tle joke let, When that joke-let is their own

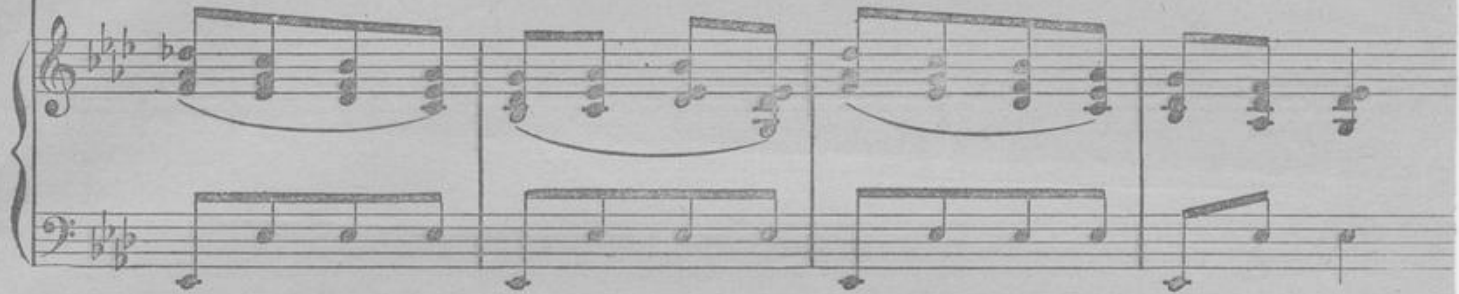
The piano accompaniment for the second line of lyrics consists of two staves of music. The right hand continues the melody from the vocal line, and the left hand provides a rhythmic accompaniment with chords and single notes. The music is in a 3/4 time signature and a key signature of two flats.

Copyright 1897 by Alice Atherton Edouan

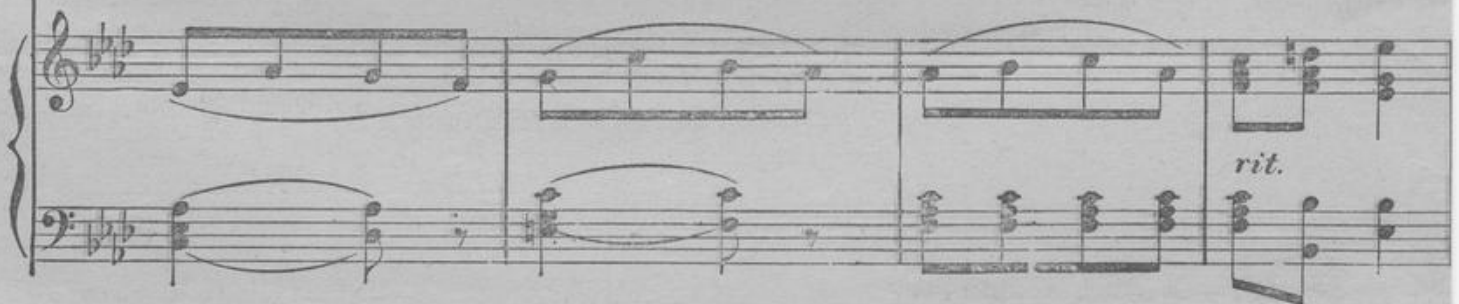
English Copyright Secured. All singing and acting rights reserved



At the play-house, a - ny eve-ning, when the fun-ny man comes out, The
 When the young man, in the cor - ner, sings his well-known com-ic lay, Mis
 Case, we'll say, is one of mur - der, lord-ship mumbles, "It is clear, The



or - ches tra and gal - tery min - gle In one loud, hi - la - rious shout
 Prim exclaims, "Oh, this is dreadful, Why don't they send the man a - way?"
 pris - ner's had a drop too much, But he'll have an - oth er drop, I fear."



CHORUS.



Ha, ha, ha, ha, ha, ha, ha, ha, ha, ha,



ha, ha, ha, ha, ha, ha, ha, ha, ha, ha, ha! Ha, ha, ha, ha,

ha, ha, ha, ha, ha, ha, ha, ha, ha! Ha, ha, ha, ha,

ha, ha, ha, ha, ha, ha, ha, ha, ha! ha!