

The University of Maine
DigitalCommons@UMaine

Vocal Popular Sheet Music Collection

Public domain (may be downloaded in full)

1922

Love's Paradise : I Never Knew

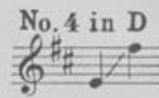
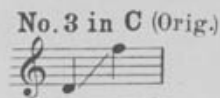
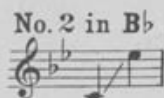
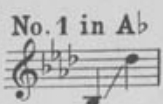
James Stanley Royce
Composer

Follow this and additional works at: <https://digitalcommons.library.umaine.edu/mmb-vp>

Recommended Citation

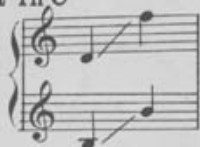
Royce, James Stanley, "Love's Paradise : I Never Knew" (1922). *Vocal Popular Sheet Music Collection*. Score 5041.
<https://digitalcommons.library.umaine.edu/mmb-vp/5041>

This Book is brought to you for free and open access by DigitalCommons@UMaine. It has been accepted for inclusion in Vocal Popular Sheet Music Collection by an authorized administrator of DigitalCommons@UMaine. For more information, please contact um.library.technical.services@maine.edu.



No. 5 Duet in C

Soprano or
Tenor (lead)
and
Alto or
Baritone



No. 6 Duet in B♭

Soprano or
Tenor
and
Mezzo Soprano
or Baritone (lead)



LOVE'S PARADISE

(I NEVER KNEW)

SONG

From The Song Cycle
"CUPID'S GARDEN"

A NEW BEDOUIN SONG

No. 1. "I GO TO CLAIM MY LOVE"
Low Voice

No. 2. "LOVE'S PARADISE"
(I NEVER KNEW)

High, Medium High, Medium and Low

No. 3. "IT WAS JUNE"
High or Medium

No. 4. "I HAD A GARDEN"
High, Medium High, Medium and Low

BY

JAMES STANLEY ROYCE

PRICE LIST

No. 1 in Key of A♭.....	60 ¢
No. 2 in Key of B♭.....	60 ¢
No. 3 in Key of C.....	60 ¢
No. 4 in Key of D.....	60 ¢
No. 5 Vocal Duet in C.....	75 ¢
No. 6 Vocal Duet in B♭.....	75 ¢
Waltz Instrumental for Piano.....	60 ¢
Quartette for Male Voices.....	25 ¢
Quartette for Mixed Voices.....	25 ¢
Quartette for Female Voices.....	25 ¢
Orchestra, 10 and Piano.....	75 ¢
Orchestra, 10, Cello and Piano.....	85 ¢
Orchestra, 14 and Piano.....	95 ¢
Full Orchestra and Piano.....	1.15 ¢
Violin and Piano.....	25 ¢
Violin, Cello and Piano.....	35 ¢

Ask to hear it
Played on
Talking Machine
Records

Ask to hear it
Played on
Player Piano
Rolls

VANDERSLOOT MUSIC PUBLISHING CO.
WILLIAMSPORT, PA., U. S. A.

NEW YORK

CHICAGO

LONDON

MELBOURNE

TORONTO

COPYRIGHT MCMXXII

PRINTED IN U. S. A.

INTERNATIONAL COPYRIGHT

VP. 019079
1922
LOVE'S

Love's Paradise

(I NEVER KNEW)

A Ballad

I

Ev'ry morn must have its dawning,
Ev'ry day its close;
Ev'ry dew-drop brings its gladness,
To some fragrant rose;
Ev'ry heart-throb sings a love song,
If a love be true,
And though each day tells a story,
This I never knew:

REFRAIN

I never knew what gladness meant,
Until you came my way;
I never knew what love could mean,
Until that golden day;
I never knew that skies were blue,
'Til I gazed in your eyes;
I never knew that I might be
So near Love's Paradise.

II

Ev'ry sun-ray has its shadow,
Ev'ry rose its thorn;
Ev'ry gladness has its sorrow
To a love forlorn;
Ev'ry soul must have its yearning,
Ev'ry rose its woe;
Though I lose your love tomorrow,
This I'll ever know:

James Stanley Royce

Love's Paradise

(I NEVER KNEW)

(C) Orig.

by JAMES STANLEY ROYCE

Valse Moderato

Voice

Ev'-ry morn must have its dawn-ing, — Ev' - ry day its
 Ev'-ry sun ray has its shad-ow, — Ev' - ry rose its

close; — Ev'-ry dew - drop brings its glad-ness, — To some
 thorn; — Ev'-ry glad - ness has its sor - row — To a

fra - grant rose; — Ev'-ry heart-throb sings a love song, —
 love for - lorn; — Ev'-ry soul must have its yearn-ing,

Copyright MCMXXII by Vandersloot Music Pub. Co., Williamsport, Pa.

Copyright Canada MCMXXII by Vandersloot Music Pub. Co.

International Copyright Secured

Herman Darewski Music Pub. Co., London, England (Sole agent for England, Ireland, Scotland and Wales.)
 Williamsport, Pa. - New York - Chicago - Toronto - Melbourne

Printed in the U. S. A.

If a love be true, _____ And tho' each day
Ev' - ry heart its woe; _____ Tho' I lose your

tells its sto - ry, This I nev - er knew: _____
love to - mor - row, This I'll ev - er know: _____

CHORUS Valse Lento (*Dreamily*)

I nev-er knew, what glad-ness meant, Un - til you

came my way; _____ I nev - er knew

what love could mean, Un - til that gold - en day;

I nev-er knew that skies were blue, 'Til I gazed in your

eyes; I nev-er knew that I might be,

So near Love's Par - a - dise. 1. 2. dise.

Try this over on your Piano

Low Voice

To Ivan Arbuckle

A new

BEDOUI N SONG

I Go To Claim My Love

By JAMES STANLEY ROYCE

ff a tempo

The piano introduction consists of two staves. The right hand features a melodic line with eighth-note patterns and some triplets. The left hand provides a steady accompaniment with chords and eighth notes.

Firmly
The breath of the des-ert is cool - ing, The crim-son sun-birds

Moderato
mf

The vocal line begins with a rest, then enters with the lyrics. The piano accompaniment continues with a moderate tempo and a dynamic of mezzo-forte.

fly Where Al - lah's palms are wav - ing Be-neath a prim - rose sky; — They

The vocal line continues with the lyrics. The piano accompaniment features a change in key signature to B-flat major and a change in time signature to 9/8.

Copyright MCMXXII by Vandersloot Music Pub. Co., Williamsport, Pa.

Copyright, Canada MCMXXII by Vandersloot Music Pub. Co.

International Copyright Secured

Herman Darewski Music Pub. Co., London, England (Sole agent for England, Ireland, Scotland and Wales)

Williamsport, Pa. - New York - Chicago - Toronto - Melbourne.

Printed in the U.S.A.

Complete Copies may be had where you bought this