

1908

The Good Old Jackson Car

Carl Carlton
Composer

C. D. Paxson
Lyricist

Follow this and additional works at: <https://digitalcommons.library.umaine.edu/mmb-vp>

Recommended Citation

Carlton, Carl and Paxson, C. D., "The Good Old Jackson Car" (1908). *Vocal Popular Sheet Music Collection*. Score 534.
<https://digitalcommons.library.umaine.edu/mmb-vp/534>

This Book is brought to you for free and open access by DigitalCommons@UMaine. It has been accepted for inclusion in Vocal Popular Sheet Music Collection by an authorized administrator of DigitalCommons@UMaine. For more information, please contact um.library.technical.services@maine.edu.

Jackson

*"No Hill Too Steep"
"No Sand Too Deep"*



*FROM EARTH TO MARS
IN A JACKSON CAR.*



Words by
C. D. PAXSON
Music by
C. CARLTON

Jackson Motor Car Co
821 BOYLSTON ST.
BOSTON, MASS.

VPAG
G
1918
154

The Good Old Jackson Car

Words by
C. D. PAXSON

Music by
CARL CARLTON

All^o. Mod^{to}

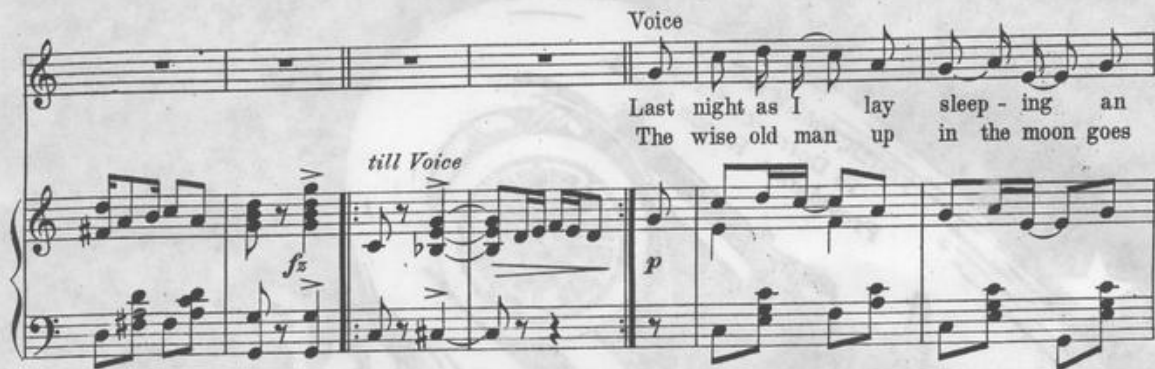
PIANO



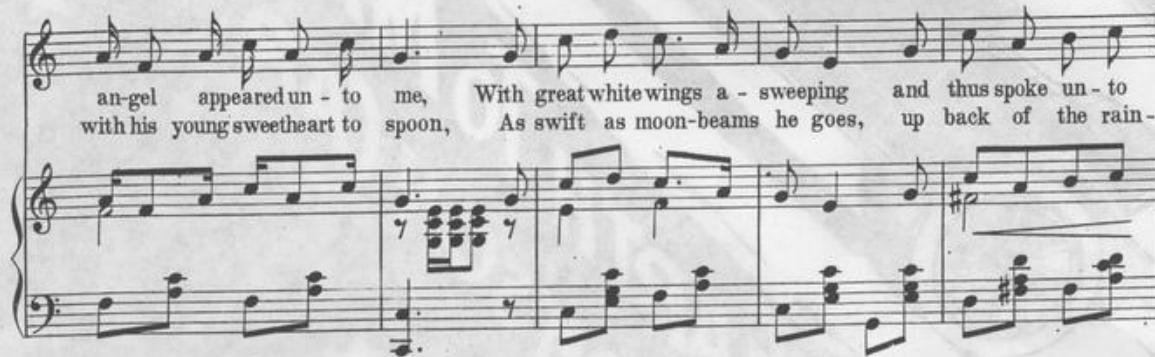
Voice

Last night as I lay sleep - ing an
The wise old man up in the moon goes

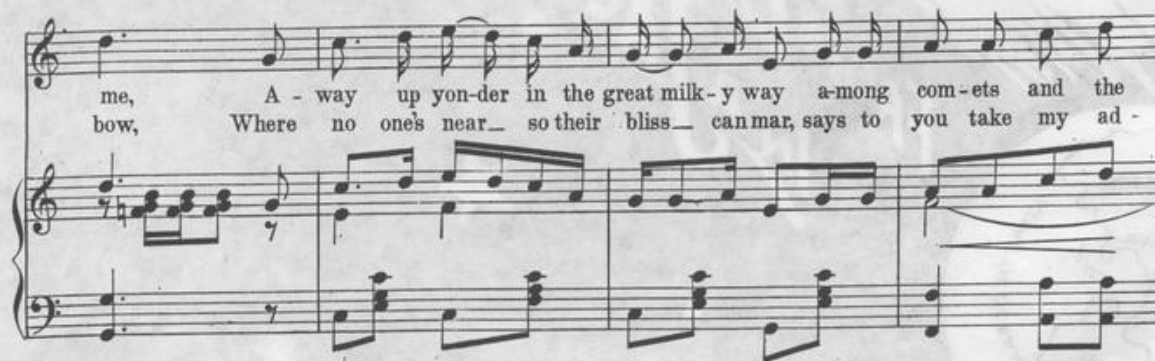
till Voice



an - gel ap - peared un - to me, With great white wings a - sweep - ing and thus spoke un - to
with his young sweetheart to spoon, As swift as moon - beams he goes, up back of the rain -



me, A - way up yon - der in the great milk - y way a - mong com - ets and the
bow, Where no one's near - so their bliss - can mar, says to you take my ad -



stars, They're us - ing au - to - mo - biles to - day and the best are the Jack-son cars.
 vice, If you want something that's real - ly nice al-ways ride in a Jack-son car.

CHORUS

From earth to Mar, from star to star, It's al-ways the same in

p-f

sun-shine or rain, No hill too steep, no sand too deep for the

good old Jack - son car. From car.

1. 2.

ORIGINAL
 OR DISPLAY Jackson Car 2
 AUTO

103
 2015
 Single Copy

No hill too steep
No sand too deep

JACKSON

*In Power,
Size, Equipment —
The JACKSON gives you more*

WHERE, save in the Jackson "42," will you get full 40 horsepower, 118 inch wheelbase, 34 x 4 inch tires, full elliptic springs, windshield, top, gas tank, etc.—all for \$1500?

Compare the Jackson "42," part for part, with any other car at \$1500.

See if you can buy in any other car of moderate price all the elements that make for efficiency, comfort, safety and satisfaction.

Make the comparison actual, if you can.

It will convince you that in power, size, equipment—the Jackson "42," gives you an extraordinary \$1500 worth of value.

In the Jackson "52"—a full fifty horsepower motor, 124 inch wheelbase, 36 x 4 inch tires and full elliptic spring—for \$1800.

In the Jackson "32"—a full thirty horsepower motor, 32 inch wheels, 110 inch wheelbase and full elliptic springs—for \$1100.

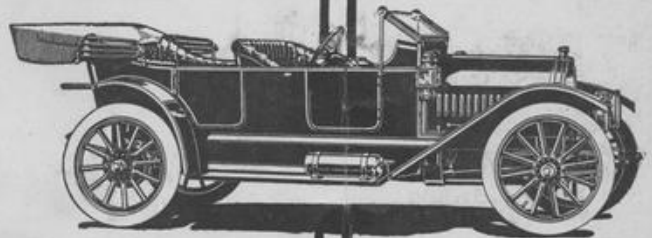
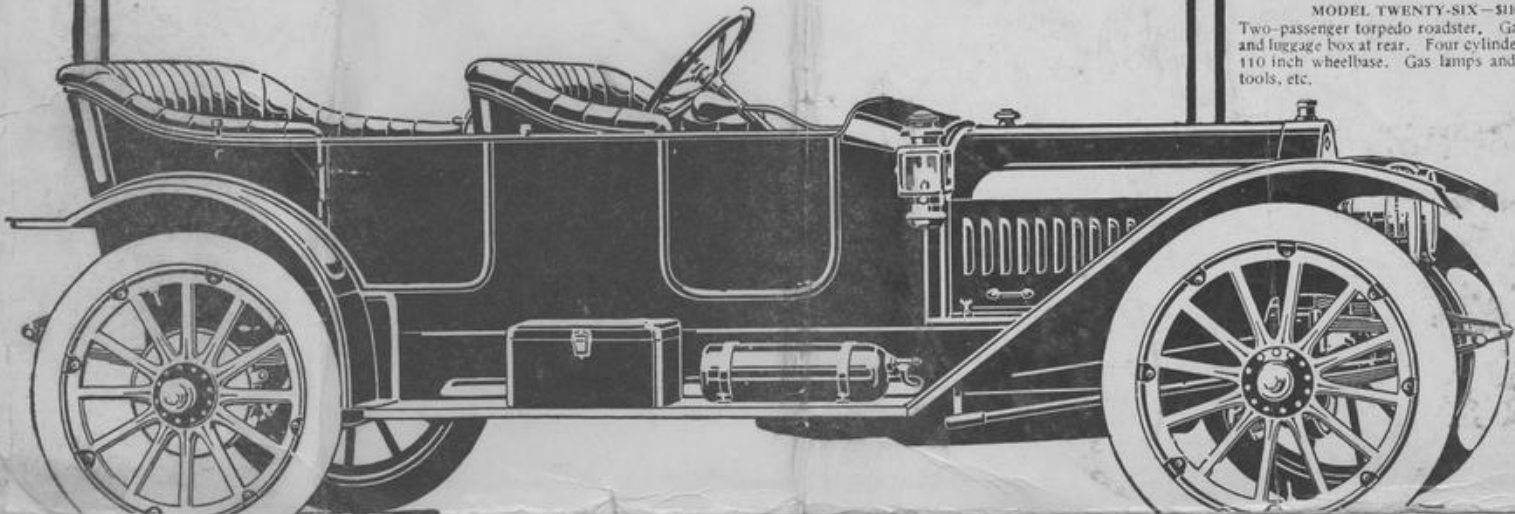
The Jackson always gives you more.

JACKSON MOTOR CAR CO.

821 Boylston St., Boston, Mass.

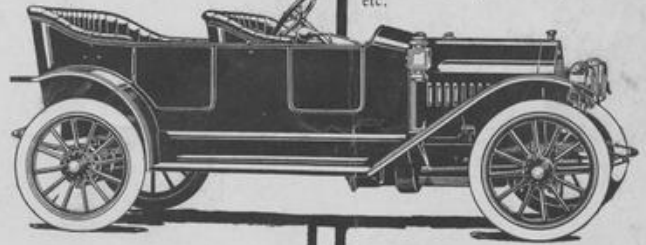
MODEL 52 — \$1800

Fifty horsepower, four cylinder motor; 124 inch wheelbase; full elliptic springs, front and rear; 36 inch wheels. Extra roomy five-passenger body. Price includes demountable rims, gas tank, horn, tools, etc.



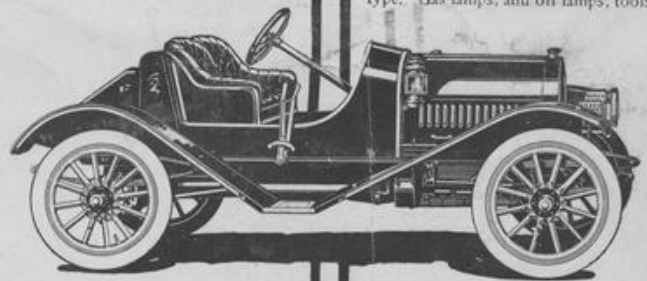
MODEL FORTY-TWO — \$1500

Forty horsepower, four cylinder motor; 118 inch wheelbase; full elliptic springs, front and rear; 34 x 4 tires. Roomy five-passenger body. Price includes full equipment of top, windshield, gas tank, etc.



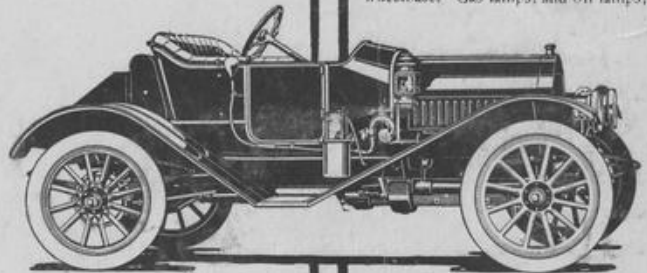
MODEL THIRTY-TWO — \$1100

Thirty horsepower, four cylinder motor; 110 inch wheelbase; 32 x 4 inch tires; five-passenger torpedo type. Gas lamps, and oil lamps, tools, etc.



MODEL TWENTY-EIGHT — \$1000

Two-passenger roadster. Gasoline tank and luggage box at rear. Four cylinders, 30 H. P., 100 inch wheelbase. Gas lamps, and oil lamps, tools, etc.



MODEL TWENTY-SIX — \$1100

Two-passenger torpedo roadster. Gasoline tank and luggage box at rear. Four cylinders, 30 H. P., 110 inch wheelbase. Gas lamps and oil lamps, tools, etc.