

The University of Maine
DigitalCommons@UMaine

Vocal Popular Sheet Music Collection

Public domain (may be downloaded in full)

1901

I'm a Respectable Workin' Girl

Fay Templeton
Artist

John Stromberg
Composer

Smith
Lyricist

Follow this and additional works at: <https://digitalcommons.library.umaine.edu/mmb-vp>

Recommended Citation

Templeton, Fay; Stromberg, John; and Smith, "I'm a Respectable Workin' Girl" (1901). *Vocal Popular Sheet Music Collection*. Score 2512.
<https://digitalcommons.library.umaine.edu/mmb-vp/2512>

This Book is brought to you for free and open access by DigitalCommons@UMaine. It has been accepted for inclusion in Vocal Popular Sheet Music Collection by an authorized administrator of DigitalCommons@UMaine. For more information, please contact um.library.technical.services@maine.edu.



JOS. WEBER



L.M. FIELDS

VOCAL &
INSTRUMENTAL
SELECTIONS FROM

WEBER & FIELDS

NEW BURLESQUE
PRODUCTIONS

"Fiddle-Dee-Dee"

and

"Quo Vass Iss"

LYRICS BY

EDGAR SMITH.

MUSIC BY

JOHN STROMBERG



FAY TEMPLETON

I'm a Respectable Workin' Girl

SUNG BY
FAY TEMPLETON

50

New York
WITMARK & SONS
Chicago
Solely Business

Vp. 008765
1901
I'n A

I'm a Respectable Workin' Girl.

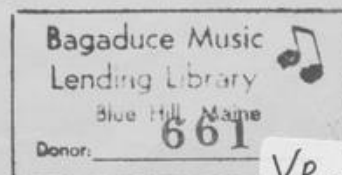
Words by
EDGAR SMITH.

Music by
JOHN STROMBERG.

Piano.

I keep a man - i - cur - in' shop In Lon - don, on the Strand Where I
Last sum - mer, one bank 'ol - i - day At Bright - on by the sea, My
One eve - nin' I went out to dine With a gent I thought was grand: But he
An - oth - er gent one night, takes me Grand Op - er - a to 'ear, I

toike a lit - tle bit off the top Of the best nails in the land; Some
bath - in' suit goes wrong some way And there I'm up a tree; I
or - ders ev - - 'ry - thing in words I could - n't un - der - stand I
loikes it so, I nev - er see The loi - dies sit - ting near But



VP 1901
I

- times the swells 'are bloom - in' fresh And act an aw - ful
 stays out in the waves so long They sends a life boat
 thought it queer but let it pass, Till he says, when no one's
 when I toikes a look a - bout I gets up on my

way, And that's when you'll hear So - phy 'ere, Get on her ear and say:
 out; But when the cap - tain says: "Wot's wrong" You should 'ave eard me shout:
 by, "Sup - pose we 'ave a dem - i - tasse?" Then I says to him, says I:
 wrath, And says to my young man "Come hout, We're in a Tur - kish bath."

REFRAIN.

"Im a re - spect - a - ble work - in' girl and I've no time to dal - ly, — Im
 "Im a re - spect - a - ble work - in' girl and there's noth ing wrong with me, sir, — It's
 "Im a re - spect - a - ble work - in' girl while you're of the hup - per class - es — But you
 "Im a re - spect - a - ble work - in' girl and I like your Trov - y - to - ry — It's

none of your flirt - in' act - ress - es or loi - dies of the bal - let;— I'll
no - bod - y's bloom - in' bus' - ness 'ow long I stays in the sea, sir, — I
can't come none of your games on me, with wine and dem - i - tass - es, — I
de - cent e - nough but the au - di - ence is quite an - oth - er sto - ry — If I

give you a smack if you are an Earl, if you don't leave me
paid for my bath and I'll give it a whirl, un - til the sun is
could 'ave sworn that you was a gent, as would nev - - er treat me
want - ed to stud - y a - nat - o - my it's not with a man I'd

go, — For I'm a re - spect - a - ble work - in' girl I'd 'ave you know?'
low, — For I'm a re - spect - a - ble work - in' girl I'd 'ave you know?'
so, — For I'm a re - spect - a - ble work - in' girl I'd 'ave you know?'
go, — For I'm a re - spect - a - ble work - in' girl I'd 'ave you know?'

f *D.S.*

The International Popular Song Successes



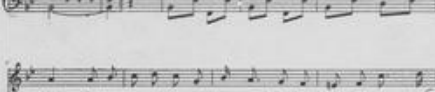
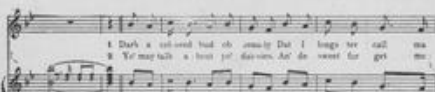
THE RAGE OF LONDON AND NEW YORK

Ma Blushin' Rosie.

MA POSE SWEET

Words by
EDGAR SMITH

Music by
JOHN STROMBERG



Copyright, 1913, by M. Witmark & Sons, Inc.
International Copyright Secured

"Ma Blushin' Rosie"

(ROSEY POSIE)

BY

EDGAR SMITH AND JOHN STROMBERG



Pay Templeton's terrific hit at Weber & Fields'
Broadway Music Hall, New York



Madge Lessing's sensational success in the
Drury Lane Pantomime, London

"Ma Tiger Lily"

BY

CLAY M. GREENE AND A. B. SLOANE



Sung by the Prominent American Comedy
Artists



A wonderful success with Alexander Dagmar
and Harry Randall, in the Pantomime
at the Grand, Islington, England

PUBLIC PERFORMANCE PROHIBITED WITHOUT PERMISSION

MA TIGER LILY.

Words by CLAY M. GREENE

Music by A. B. SLOANE



Copyright, 1913, by M. Witmark & Sons, Inc. International Copyright Secured
Printed in New York City, U.S.A.

"MY MAY DAY"

By FORD AND BRATTON



Another big hit with Floy Redledge



"MY MOBILE GAL"

By ROBT. B. SMITH AND HARRY T. MacCONNELL



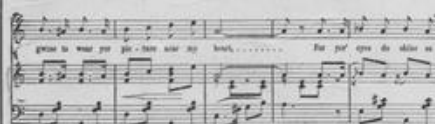
A successful interpolation in "Belle of Bohemia,"
at the Casino, New York



Sung by Mabel Gilman, in "The Casino Girl,"
at the Shaftsbury Theatre, London

MY SUNFLOWER SUE.

CHORUS.



"My Sunflower Sue"

BY

FORD AND BRATTON



The feature of the successful musical play,
"Hodge, Podge & Co.," sung by the
Star, Peter F. Dailey



Floy Redledge's "production" success in the
Pantomime at the Avenue, Sunderland,
also the Palace, London

"Side by Side"

BY

LYN UDALL



A pathetic gem by the composer of the celebra-
ted "Just as the Sun Went Down." Sung
by Julius P. Witmark and J. Aldrich
Libbey, en tour throughout the
United States



The Manhattan Comedy Four's big hit at
the Palace, London

"SIDE BY SIDE"

Words and Music by LYN UDALL



Copyright, 1913, by M. Witmark & Sons, Inc. Single Copyright Secured