

1869

Brown-Eyed Allie

J. M. B Sill
Composer

J. M. B Sill
Lyricist

Follow this and additional works at: <https://digitalcommons.library.umaine.edu/mmb-vp>

Recommended Citation

Sill, J. M. B and Sill, J. M. B, "Brown-Eyed Allie" (1869). *Vocal Popular Sheet Music Collection*. Score 2044.
<https://digitalcommons.library.umaine.edu/mmb-vp/2044>

This Book is brought to you for free and open access by DigitalCommons@UMaine. It has been accepted for inclusion in Vocal Popular Sheet Music Collection by an authorized administrator of DigitalCommons@UMaine. For more information, please contact um.library.technical.services@maine.edu.

Wm. Uncle Charles

em

J. M. B. SILL'S POPULAR



- | | | | |
|---|---|-----|--|
| 1. <i>Brown Eyed Allie.</i> | 4 | 6. | |
| 2. <i>Nora O'Milligan.</i> | 3 | 7. | |
| 3. <i>There's plenty of work for you.</i> | 4 | 8. | |
| 4. | | 9. | |
| 5. | | 10. | |

Vp. 007685
1869
Bro

EMIGOTT & KREBS, LITHOGRAPHERS
BOSTON,
te, Smith & Perry

DETROIT,
Published by WHITTEMORE, SWAN & STEPHENS 179 Jefferson Ave,
Entered according to act of Congress, April 1869 by Alliance Whittemore & Co. in the Clerk's office of the Dist. Court of the East. Dist. Wash.

ST. LOUIS,
Bollman & Schatzman.

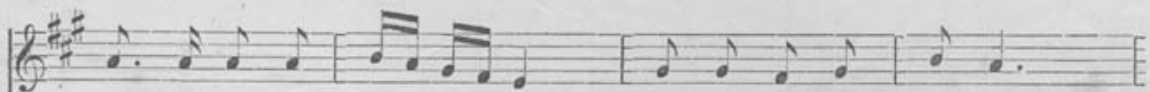
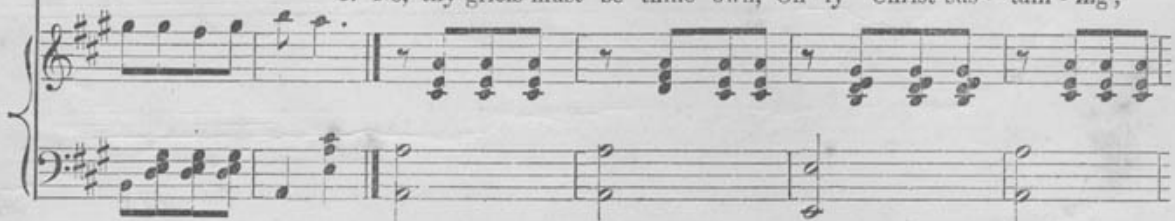
BROWN-EYED ALLIE.

WORDS & MUSIC BY J. M. B. SILL.

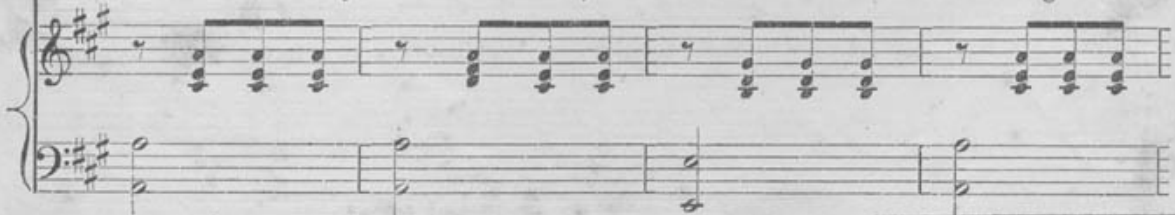
Allegretto non troppo.




1. Safe from dan-ger sin and strife, Down to the gloomy val-ley ;
2. *Could I bear thy griefs for thee, Trust-ing lit-tle maid-en ;*
3. No, thy griefs must be thine own, On-ly Christ sus-tain-ing ;



God defend thee all thy life, Darling brown-eyed Al-lie ;
 Ah, how glad-ly would I be By their weight o'er-la-den,
 Thou must bear thy cross a lone, 'Tis of God's or-dain-ing :



Entered according to act of Congress A. D. 1869, by J. H. Whittemore & Co., in the Clerk's office of the District Court of the District of Maine.


 Bagaduce Music
 Lending Library
 Blue Hill, Maine
 Donor: 630

May He keep thy soul from blight, Ten - der - ly and sure - ly ;
Would that I thy com - ing fears, *From thy life could bor - row ;*
 Thy bright eyes with tears must dim, Thou must dread thy mor - row ;

Help - ing thee to walk a - right, Lov - ing - ly and pure - ly,
Would that I could weep thy tears, *Car - ry all thy sor - row,*
 Thou must look a - lone to Him, Who bear - eth all thy sor - row,

Come, come sit up - on my knee Brown-eyed laugh - ing ba - by ; And

I will ask of the Fates for thee, What thy fu - ture may be.

CHORUS.

AIR.

Come, come, Brown-eyed laughing ba - by, And

ALTO.

Oh, come, Oh, come, Brown-eyed laughing ba - by, And .

TENOR.

Oh, come, Oh, come, Brown-eyed laughing ba - by, And

BASS.

Oh, come, Oh, come, Brown-eyed laughing ba - by, And

PIANO.

Repeat pp

I will ask of the Fates for thee, What thy fu - ture may be.

I will ask of the Fates for thee, What thy fu - ture may be.

I will ask of the Fates for thee, What thy fu - ture may be.

LATEST PUBLICATIONS.

VOCAL.

<i>A Merry Heart</i> ,---ballad	Geary. 30
<i>The Little Flower you Gave me</i> ,.....	Macy. 35
<i>The Old Checkered Apron</i> , J. H. Whittemore. 40	
Song and Chorus,—embellished with a beautiful Lithographic Title.	
<i>A Kiss</i> ,.....	S. Mazurette. 30
<i>Farewell</i> ,.....	" 30
<i>He Has Gone and Left Me</i> ,.....	" 30
<i>I Wait for Thee</i> ,.....	" 30
<i>When I Shall be Far Away</i> ,	" 30
<i>Beautiful Girl--Belle of the Night</i> , " 75	

INSTRUMENTAL.

<i>Monument March</i> ,	S. Mazurette. 40
<i>L'Orient--Galop de Concert</i> ,....	" 1.00
<i>Orchard Lake Polka</i> ,	J. H. Whittemore. 40

POPULAR DANCE MUSIC

AS PLAYED BY THE ORCHESTRA AND MILITARY BANDS.

COMPOSED BY ROE STEPHENS.

<i>Sophie Galop</i>	30
<i>Moonstone</i> "	40
<i>Blue Line</i> "	50
<i>Our Watch</i> "	50
<i>Moonstone Waltz</i>	40
<i>Blue Line</i> "	50

Fair as a Star,---ballad

The above choice pieces may be had of any Music Dealer in the United States.
New Music received immediately upon publication.
Catalogues mailed free on application.

Address--
WHITTEMORE & STEPHENS,
MUSIC PUBLISHERS,
179 Jefferson Ave., Detroit.

COMPLETE LIST OF

J. Henry Whittemore's

POPULAR COMPOSITIONS.

VOCAL.

<i>Beautiful Day</i> . (Song and Chorus).....	40
<i>By Old Oak Orchard's Rippling Stream</i> . (Song and Chorus),	35
<i>Baby's Sunbeam</i> . (Song and Chorus).....	40
<i>Changes on the Times</i> . (Song and Chorus).....	35
<i>Days Gone By</i>	35
<i>Effie May</i> . (Song and Chorus).....	30
<i>Footprints on the Snow</i> . (Song and Chorus).....	40
<i>Gentle Spirits, Are You Near Me</i>	30
<i>Golden Words</i> . (New).....	30
<i>Michigan, My Michigan</i>	35
<i>My Darling Boy is Dead</i>	35
<i>Old Flag will Triumph Yet</i>	35
<i>Oh! Sing to Me, Allie</i>	35
<i>Roll Back Again, those By-gone Years</i>	50
<i>Soldier's Loved Ones</i>	35
<i>Southern Flirtations</i>	35
<i>'Tis for Him that Mother's Weeping</i>	30
<i>What Will They Say in Michigan?</i>	20
<i>Where is My Boy To-night?</i>	30
Don't Go, Mollie Darling . (Song and Chorus).....	40
Out of the Old House into the New	40

The two last are JUST ISSUED, and we predict an immense sale for them, as they are truly beautiful songs, both as regards poetry and melody, and regarded by all who have heard them as Mr. Whittemore's best efforts. They are embellished with magnificent Lithographic title pages.

Be sure and order these songs; you can depend on something really fine.

INSTRUMENTAL.

<i>Dancing Sunbeam</i> . (Polka Redowa).....	40
<i>Fairy Whispers</i> . (Polka Elegante).....	50
<i>Light Guard Polka</i>	30
<i>Bird of Beauty Polka Mazurka</i>	30
<i>Bird of Beauty Schottische</i>	30
<i>Bird of Beauty Waltz</i>	30
<i>Bird of Beauty March</i>	30
<i>Bird of Beauty Galop</i>	30
<i>New Light Guard Quickstep</i>	50
<i>Mason & Hamlin Grand March</i>	30
<i>Return of Spring Mazurka</i>	30
<i>Longwood Polka</i>	40
<i>Sigma Phi</i>	30

The above list we recommend with pleasure. They possess originality and a peculiar sparkle which Mr. Whittemore so happily blends in all his compositions. Order these pieces, and you will get more than the investment. Address,

WHITTEMORE & STEPHENS,
PUBLISHERS, DETROIT.

MOTHERS AND DAUGHTERS.

The new and beautiful Song—

DON'T GO MOLLIE DARLING

Appeals strongly and directly to your interests. Pronounced by musical critics a composition of rare merit. Poetry of that tender and pathetic character which touches the heart, wedded to a most charming Melody, at once captivating the ear. This Song should be in every household. Composed by the popular writer, J. HENRY WHITTEMORE.
Beautiful Lithograph Title—Price 40 Cents.

Order it from your nearest music store, or address Publishers—
WHITTEMORE & STEPHENS, Detroit, Mich.