

The University of Maine DigitalCommons@UMaine

Vocal Popular Sheet Music Collection

Public domain (may be downloaded in full)

1908

The Yama-Yama Man.

Karl L Hoschna
Composer

Collin Davis
Lyricist

Follow this and additional works at: <https://digitalcommons.library.umaine.edu/mmb-vp>

Recommended Citation

Hoschna, Karl L and Davis, Collin, "The Yama-Yama Man." (1908). *Vocal Popular Sheet Music Collection*. Score 3074.
<https://digitalcommons.library.umaine.edu/mmb-vp/3074>

This Book is brought to you for free and open access by DigitalCommons@UMaine. It has been accepted for inclusion in Vocal Popular Sheet Music Collection by an authorized administrator of DigitalCommons@UMaine. For more information, please contact um.library.technical.services@maine.edu.



THREE TWINS

CHAS. DICKSON'S
MUSICAL ADAPTATION
OF MRS. R. PACHECO'S COMEDY "INCOG"

The Yama Yama Man

Lyric by Collin Davis



Theatrical and Music Hall Rights of this Song are Reserved. For permission apply to the Publishers.

M. WITMARK & SONS
NEW YORK CHICAGO LONDON PARIS

MANAGEMENT
JOS. M. GAITES



LYRICS BY
HAUERBACH

MUSIC BY
KARL L. HOSCHNA

Vp-009995
1908
YAM

The Yama-Yama Man.

Lyric by
COLLIN DAVIS.

Music by
KARL HOSCHNA.

Moderato misterioso.

Piano.

The piano introduction consists of two systems of music. The first system shows a treble clef staff with a whole rest, and a grand staff (treble and bass clefs) with a series of chords and moving lines. The second system continues the piano accompaniment with similar textures. Dynamics include *sf* (sforzando) and *fp* (fortissimo piano).

§ Till Ready.

The first system of the vocal line shows a treble clef staff with a whole rest, followed by a few notes. The piano accompaniment is in a grand staff with a *pp* (pianissimo) dynamic. The lyrics "Ev - 'ry Great big" are written below the vocal line.

The second system of the vocal line continues the melody. The piano accompaniment provides harmonic support. The lyrics "lit - tle tot at night, Is a - fraid of the dark you star - ry eyes you see, So you cov - er up your" are written below the vocal line.

4 3 3 0
M.W.&SONS 8264-4

Copyright MCMVIII by M. Witmark & Sons.
Rights For Mechanical Instruments Reserved.
International Copyright Secured.

"Tous droits d'Édition et
d'Exécution réservés pour
tous pays."

Bagaduce Music
Lending Library
Blue Hill, Maine
Donor: 744

know. Some big
head. But that

Ya - ma man they see, When - off to - bed they go.
Ya - ma man is there, Stand - ing right be - side your bed.

REFRAIN.

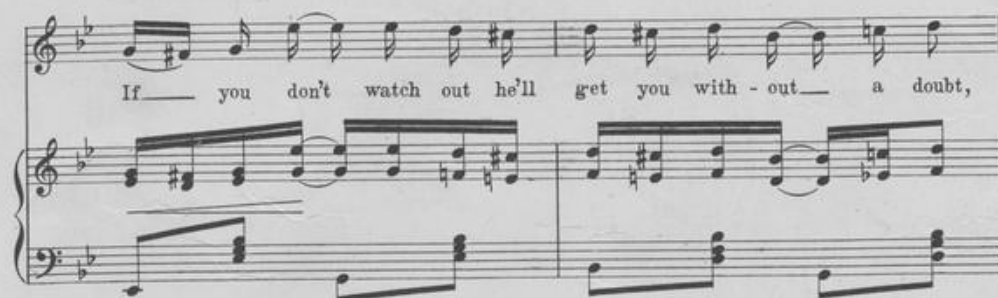
Ya - ma, Ya - ma, the - Ya - ma man,

pp - ff

Ter - ri - ble eyes _____ and a face_ of tan._____



If _____ you don't watch out he'll get you with - out _____ a doubt,




If he can.



May be he's hid - - ing be hind_ the chair,



Read - y to spring out at you un - a - ware. —



Run to your ma - ma, For — here comes the Ya - - ma,



Ya - ma man. man.

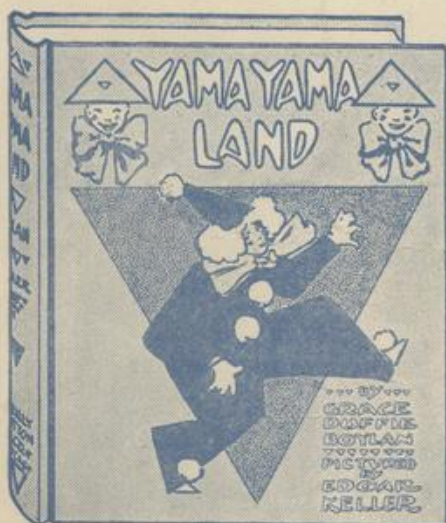


YAMA YAMA LAND

An Extravaganza in Book Form for Children

By GRACE DUFFIE BOYLAN

With Wonderful Pictures in Many Colors by Edgar Keller



¶ To those thousands upon thousands who have witnessed a performance of "The Three Twins," which has played more than 600 consecutive times in the city of New York alone, the basic idea of "Yama Yama Land" as an extraordinary children's story will be perfectly plain.

¶ The universal interest aroused by the acting-song feature entitled "Yama Yama Man," most ably done by Bessie McCoy and her troupe of triangular Yama Yamas, easily gave it the prestige of being the hit of two theatrical seasons—something entirely out of the ordinary in such a vast field of novelty as the theatrical world. In the song hung the legend of this wonderful man—the Yama Yama Man—unseen, unknown, but known to be here, there, anywhere, everywhere—all pervading.

¶ From this mere whisper of so strange a character, Grace Duffie Boylan has traced him to his queer home and his equally queer people. In doing this the author

has given adventures of the rarest quality to a fair-haired little Sylvia whose escapades will open wide the eyes and imaginations of children of the fairy tale age.

¶ In aid of the text Keller's pictures are full of humor and are reproduced in many colors. As a complete book "Yama Yama Land" has all of the qualities making for big success. Large octavo. Bound in fine cloth with a striking colored picture inset. Pictorial jacket in colors.

PRICE \$1.50

For sale wherever books are sold, or sent, postpaid, on receipt of price by the publishers.

THE REILLY & BRITTON CO.
PUBLISHERS CHICAGO

If you are interested in High-Class Songs, send for

"OUR BLACK AND WHITE SERIES"

A catalog containing over 200 thematic reproductions of some of the most beautiful numbers of this kind, written in years.

A Great Book of Reference for Vocal Teachers.

Sent absolutely free.

DEPT T

Enclose two 2c stamps for postage.

M. Witmark & Sons,

WITMARK BUILDING, 144-146 West 37th Street

New York, N. Y.

