

## The University of Maine DigitalCommons@UMaine

---

Vocal Popular Sheet Music Collection

Public domain (may be downloaded in full)

---

1917

# When Down In Macon, Geogria : I'll Be Makin' Georgia Mine

Paul Biese

*Composer*

F. Henri Klickmann

*Composer*

Frost

*Lyricist*

Loos Brothers

*Lyricist*

Follow this and additional works at: <https://digitalcommons.library.umaine.edu/mmb-vp>

---

### Recommended Citation

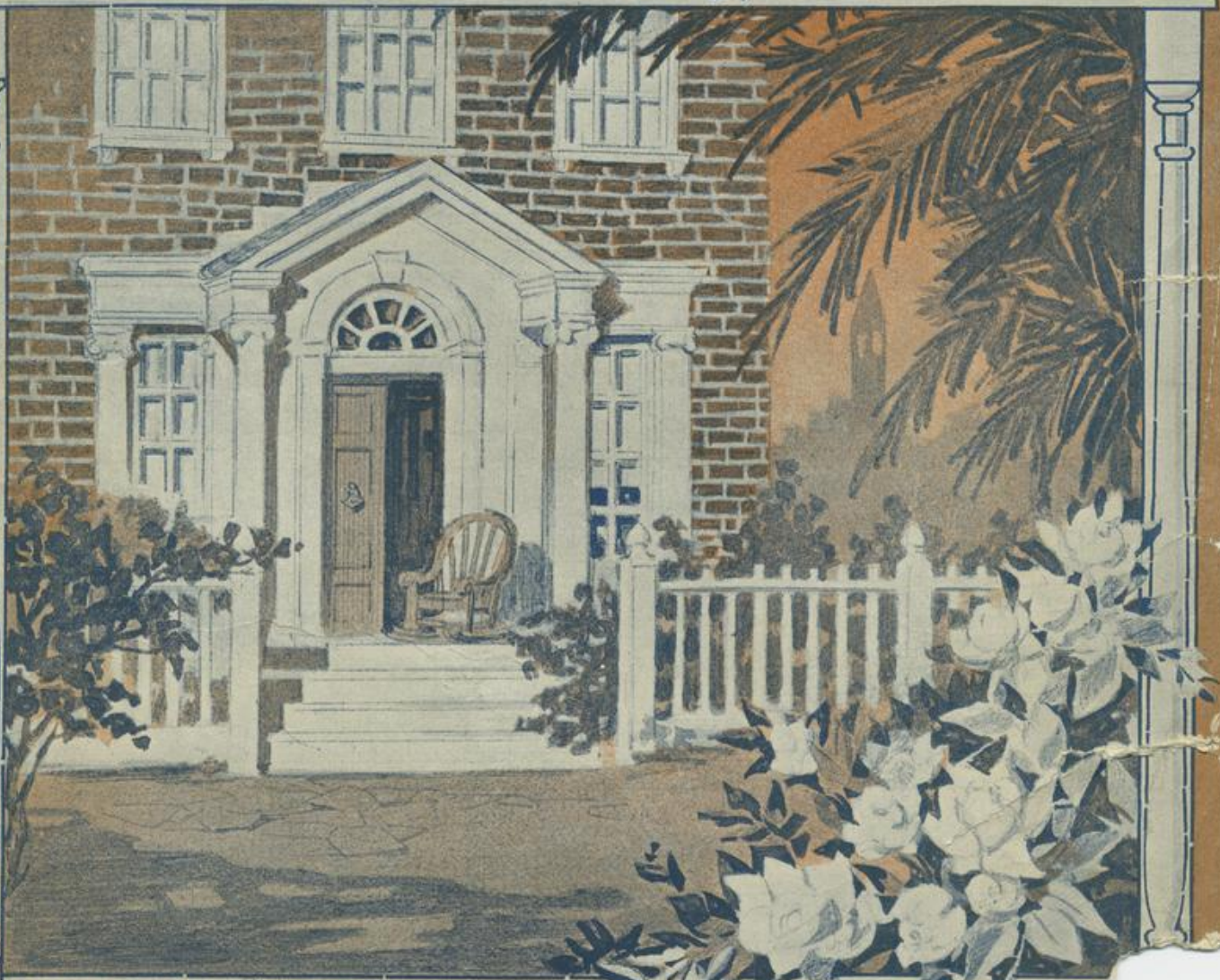
Biese, Paul; Klickmann, F. Henri; Frost; and Loos Brothers, "When Down In Macon, Geogria : I'll Be Makin' Georgia Mine" (1917).  
*Vocal Popular Sheet Music Collection*. Score 4971.

<https://digitalcommons.library.umaine.edu/mmb-vp/4971>

This Book is brought to you for free and open access by DigitalCommons@UMaine. It has been accepted for inclusion in Vocal Popular Sheet Music Collection by an authorized administrator of DigitalCommons@UMaine. For more information, please contact [um.library.technical.services@maine.edu](mailto:um.library.technical.services@maine.edu).

# WAY·DOWN·IN MACON·GEORGIA

*I'll be makin' Georgia mine.*



LYRIC BY THE  
LOOS·BROTHERS  
and  
JACK·FROST.

Frank K. Root & Co.  
McKINLEY MUSIC CO. OWNERS  
CHICAGO NEW YORK

MUSIC BY  
PAUL BIESE  
F·HENRI·KLICK

Vp. 018654  
1917  
WAY

Lyric by  
THE LOOS BROS.  
and  
JACK FROST.

# WAY DOWN IN MACON, GEORGIA, I'll Be Makin' Georgia Mine.

Music by  
PAUL BIESE  
and  
F. HENRI KLIKKMANN.

Moderato.

The piano introduction consists of two staves. The right hand starts with a series of chords and eighth notes, while the left hand provides a steady bass line. The tempo is marked 'Moderato'. The key signature has two flats (B-flat and E-flat). The piece concludes with a 'VAMP' section marked 'mp' (mezzo-piano).

I know a girl 'way down in Ma-con, Geor-gia, Down in that lit - tle town of Ma-con, Georgia,  
Mind your ge - og - ra - phy, you'll find it teach-es That state is fa-mous for its Georgia peach-es,

The first vocal line is written on a single staff. The piano accompaniment consists of two staves. The piano part begins with a 'mf' (mezzo-forte) dynamic. The melody is simple and follows the lyrics.

I know she's wait - ing 'neath that south - ern moon, I'm al - most cer - tain I'll be with her soon;  
And soon I'll reach the sweet - est peach I've seen, Then I'll be - seech the lit - tle peach I mean

The second vocal line continues the melody. The piano accompaniment provides harmonic support with chords and a steady bass line.

I had to prom - ise her that I'd come back in - sweet Mag - no - lia time, —  
To come a - long the road that leads to sun - shine — and that preach - er man, —

The third vocal line features a more complex melody with some grace notes. The piano accompaniment includes some chordal textures.

I want her on - ly, my heart is lone - ly, Sings this lit - tle rhyme. —  
And not be jeal - ous of an - y fel - lows Down in Geor - ga land. —

The final vocal line concludes the piece. The piano accompaniment ends with a final chord and a fermata over the bass line.

CHORUS

I'm on my way to Macon, Georgia, Where skies are al-ways blue, — Cause there's a girl in Macon, Georgia, Her name is Georgia,

too, — And you can say what you may, by the way it's fun-ny, Her name's the same as that state so sun-ny, Fields of cot-ton,

They seem to know I'm not for-got-ten. In that town of Macon, I know she'll un-der-stand, — And so this train, once a-gain, I am

tak-in' To the sweetest peach in Georgia land, And when it's snowtime in that north-ern c'ime, Just pic-ture me beneath that

bright sun-shine, 'Way down in Macon, Georgia, I'll be mak-in' Georgia mine — I'm on my mine.

# Late Popular Successes



If You've Never Been in Dreamland  
You've Never Been in Love.

Waltz Ballad

IF YOU'VE NEVER BEEN IN DREAMLAND  
YOU'VE NEVER BEEN IN LOVE

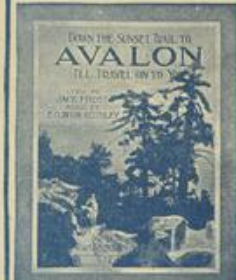
Music by MAX REINER  
Lyrics by JACK PROBST

Copyright © 1931 by Frank M. Rose & Co.  
Renew Copyright Secured

Down the Sunset Trail to  
AVALON

Lyrics by JACK PROBST  
Music by E. CLINTON KRISTLEY

Copyright © 1931 by Frank M. Rose & Co.  
Renew Copyright Secured



Popular Song Success

THE HOUR OF MEMORY  
(Remembrance Song)

English Lyrics by J. WILL CALLAHAN  
Music by A. D'ARCO  
Adapted by Henry S. Seyvert

Copyright © 1931 by Frank M. Rose & Co.  
Renew Copyright Secured

SWEET COOKIE MINE

Lyrics by JACK PROBST  
Music by CLARENCE J. JONES

Copyright © 1931 by Frank M. Rose & Co.  
Renew Copyright Secured

PARADISE BLUES

Words by WALTER HIRSCH  
Music by SPENCER WILLIAMS

Copyright © 1931 by Frank M. Rose & Co.  
Renew Copyright Secured

I AIN'T GOT NOBODY  
(And Nobody Cares for Me)

Lyrics by JACK PROBST  
Music by PAUL WISE and BENNY KLICKMANN

Copyright © 1931 by Frank M. Rose & Co.  
Renew Copyright Secured

LET'S GO BACK TO  
DREAMY LOTUS LAND

Lyrics by JACK PROBST  
Music by PAUL WISE and BENNY KLICKMANN

Copyright © 1931 by Frank M. Rose & Co.  
Renew Copyright Secured

I LOVE THAT LOVABLE MELODY

Music by SPENCER WILLIAMS

Copyright © 1931 by Frank M. Rose & Co.  
Renew Copyright Secured



The Great Original  
Blue Waltz

MOONLIGHT BLUES  
WALTZ

Music by OWEN DRANE

Copyright © 1931 by Frank M. Rose & Co.  
Renew Copyright Secured

MY FOX-TROT GIRL  
Song of Fox-Trot

Lyrics by MAX REINER  
Music by PAUL WISE and BENNY KLICKMANN

Copyright © 1931 by Frank M. Rose & Co.  
Renew Copyright Secured



Greatest Song Hit  
of the Season

Complete Copies on Sale Wherever Music is Sold!

McKinley Music Company

CHICAGO  
NEW YORK