

## The University of Maine DigitalCommons@UMaine

---

Vocal Popular Sheet Music Collection

Public domain (may be downloaded in full)

---

1923

# Cuddle - Uddle Up : Song

Harry D Squires  
*Composer*

Eleanor Young  
*Composer*

Parish  
*Lyricist*

Perrer  
*Illustrator*

Follow this and additional works at: <https://digitalcommons.library.umaine.edu/mmb-vp>

---

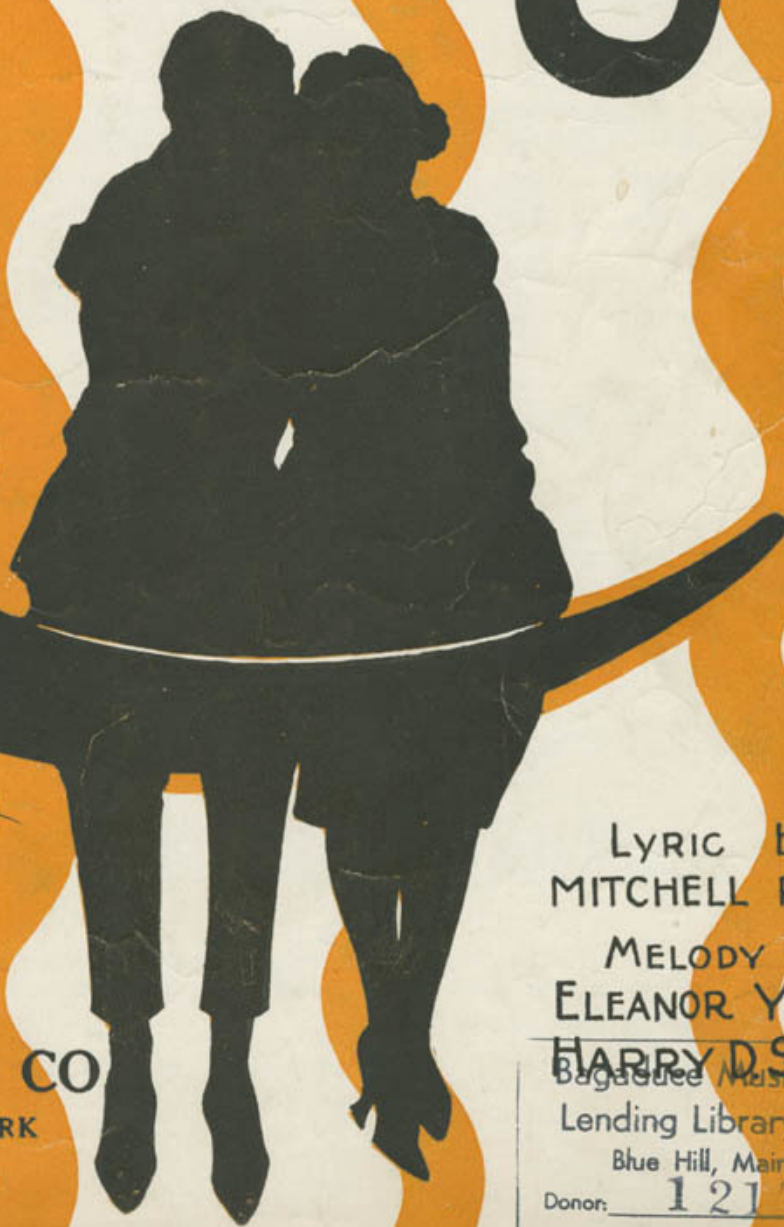
### Recommended Citation

Squires, Harry D; Young, Eleanor; Parish; and Perrerr, "Cuddle - Uddle Up : Song" (1923). *Vocal Popular Sheet Music Collection*. Score 4388.  
<https://digitalcommons.library.umaine.edu/mmb-vp/4388>

This Book is brought to you for free and open access by DigitalCommons@UMaine. It has been accepted for inclusion in Vocal Popular Sheet Music Collection by an authorized administrator of DigitalCommons@UMaine. For more information, please contact [um.library.technical.services@maine.edu](mailto:um.library.technical.services@maine.edu).

# UDDLE UDDLE UP

...Sings it with Me!  
RICE'S MUSIC SHOP  
15 Central St.  
Bangor, Me.



*Deardon*

PUBLISHED BY  
**JOE MORRIS MUSIC CO**  
DWAY NEW YORK

vp. 014692  
1923  
DVD

Printed in U. S. A.

LYRIC by  
MITCHELL PARISH  
MELODY by  
ELEANOR YOUNG  
HARRY D. SQUIRES

Bagaduce Music  
Lending Library  
Blue Hill, Maine

Donor: 1210 Perret

Try This On Your Piano  
**I Love Her**

(On The Old Back Porch)  
**SONG**

Words and Music  
By  
**JACK Le ROY**  
**BILLY HAYS**  
**JIM O'LEARY**

**CHORUS**

I love her in the morn-ing, And I love her in the  
I kiss her in the morn-ing, And I kiss her in the

*p.f*

night, And when she is near my heart is filled with de -  
night, And when she is near my heart is filled with de -

- light, I love her in the spring-time, I love her in the  
- light, I kiss her in the spring-time, I kiss her in the

Copyright MCMXXIII, by Joe Morris Music Co., 1599 Broadway, New York N.Y.

The Publishers reserve the right to the use of this Music or Melody for Mechanical Instruments

International Copyright Secured

Albert & Sons Australian Agents Sydney

For Sale By All Dealers

THE  
NUM  
ca  
be h  
for y  
Phono  
or yo  
playe

# Cuddle - Uddle Up

Lyric by  
MITCHELL PARISH  
Moderato

Melody by  
ELEANOR YOUNG  
HARRY D. SQUIRES

The piano introduction consists of two staves. The right hand plays a series of chords and eighth notes, while the left hand provides a steady bass line. The tempo is marked 'Moderato' and the dynamics start with a forte 'f'.

The first vocal entry is on a single staff, with the lyrics: "What a dream-y In the mead-ows,". The piano accompaniment continues below, featuring a 'Vamp' section. Dynamics include 'f', 'mf', and 'p'.

The second vocal entry has two lines of lyrics: "night in June, \_\_\_\_\_ What a gleam-y sum-mer" and "in the park, \_\_\_\_\_ In the shad-ows aft-er". The piano accompaniment continues with chords and bass notes.

The third vocal entry has two lines of lyrics: "moon, \_\_\_\_\_ Down in Love-land ve-ry soon, \_\_\_\_\_" and "dark, \_\_\_\_\_ Love will find a place to spark, \_\_\_\_\_". The piano accompaniment continues with chords and bass notes.

These words en - dear - ing,      You will be hear - ing:  
While eyes are meet - ing,      Lips keep re - peat - ing:

CHORUS

Cud - dle ud - dle up, \_\_\_\_\_ close to your ba - by,

*p-f*

Cud - dle ud - dle up, \_\_\_\_\_ and kiss me too, \_\_\_\_\_

When you put your arms a - round \_\_\_\_\_ me,

Then my heart goes out to you, (oh, can't you see I'm lone - ly)

Cud-dle ud-dle up, what could be sweet - er,

Let me look in - to your eyes of blue,

When I'm mel-an - chol - y, you can make me jol - ly,

Cud-dle ud-dle up, close to your ba - by by.

Cuddle-Uddle Up 3

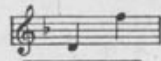
THIS  
MBER  
can  
e had  
your  
magraph  
your  
Piano

# TRY THIS ON YOUR PIANO

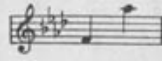
LOW VOICE IN D



MEDIUM VOICE IN F



HIGH VOICE IN A<sup>b</sup>



## Just For Remembrance (Bring Me A Red, Red Rose)

Poem by  
MITCHELL PARISH

SONG

Melody by  
ELEANOR YOUNG  
HARRY D. SQUIRES,

### REFRAIN

Just for re-mem-brance, bring me a rose, Tho' it may wi-ther,  
its pet-als close, I'll al-ways keep it with-in my heart,  
'Twill be a sign, dear, you once were mine, dear, The years to fol-low

*mp*

Copyright, 1923 by Joe Morris Music Co. 1599 Broadway New York, N.Y.  
The Publishers reserve the right to the use of this Music or Melody for Mechanical Instruments  
International Copyright Secured  
Albert & Sons Australian Agents Sydney

For Sale By All Dealers

•HOFFMAN•