

1921

# In The Heart Of The Lehigh Valley

William C Polla

*Composer*

Phil Ponce

*Lyricist*

Follow this and additional works at: <https://digitalcommons.library.umaine.edu/mmb-vp>

---

## Recommended Citation

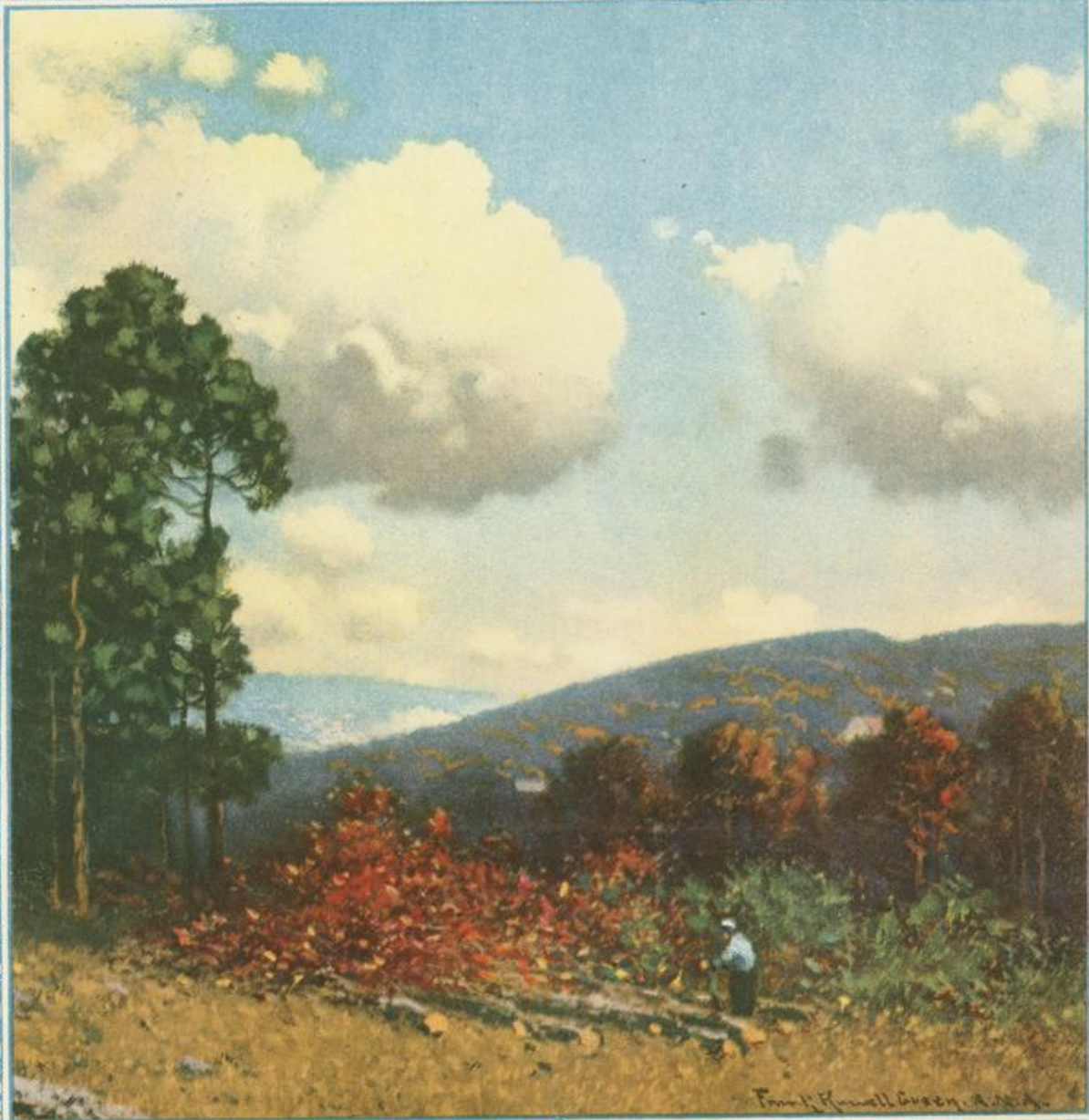
Polla, William C and Ponce, Phil, "In The Heart Of The Lehigh Valley" (1921). *Vocal Popular Sheet Music Collection*. Score 3253.  
<https://digitalcommons.library.umaine.edu/mmb-vp/3253>

This Book is brought to you for free and open access by DigitalCommons@UMaine. It has been accepted for inclusion in Vocal Popular Sheet Music Collection by an authorized administrator of DigitalCommons@UMaine. For more information, please contact [um.library.technical.services@maine.edu](mailto:um.library.technical.services@maine.edu).

# IN THE HEART OF THE LEHIGH VALLEY

WORDS BY PHIL PONCE

MUSIC BY WILLIAM POLLA



Vp. 011172  
1921  
In The

C. C. CHURCH AND COMPANY, HARTFORD, CONN., U. S. A.

HARTFORD NEW YORK LONDON PARIS SYDNEY

THE AMAPP CO., INC., N. Y.

# In The Heart Of The Lehigh Valley

Words by  
PHIL PONCE

Music by  
WILLIAM POLLA

Moderato

Piano

*f*

Musical notation for the piano introduction, consisting of two staves (treble and bass clef) in a 3/4 time signature. The key signature has two flats (B-flat and E-flat). The music begins with a treble clef staff playing a melody and a bass clef staff providing harmonic support. Dynamics include a forte (*f*) marking and a hairpin crescendo.

There's a light shin-ing bright in a  
Where the birds in the trees sing their

Musical notation for the first line of the song. It includes a vocal line with lyrics and a piano accompaniment. The piano part features a treble clef staff with chords and a bass clef staff with a simple bass line. Dynamics include a mezzo-piano (*mp*) marking.

Musical notation for the piano accompaniment corresponding to the first line of lyrics. It shows the treble and bass clef staves with chords and bass notes.

win - dow to - night Of a cot - tage far a -  
sweet mel - o - dies In the or - chard down the

Musical notation for the second line of the song. It includes a vocal line with lyrics and a piano accompaniment. The piano part continues with chords and bass notes.

Musical notation for the piano accompaniment corresponding to the second line of lyrics. It shows the treble and bass clef staves with chords and bass notes.

Copyright MCMXXI by C. C. Church & Co., Hartford, Conn., U.S.A.  
 International Copyright Secured  
 Sole Australian Agents, Nicholson & Co.  
 Sole Agent for France, Oscar Osso, 125 Faubourg

UP 1921  
011172  
In

Bagaduce Music  
Lending Library  
Blue Hill, Maine  
Donor: 0

way ————— There's a girl sit - ting there in an  
lane ————— I will nev - er for - get it was

old rock - ing chair, Where she waits for me each day. ———  
there that we met, And I must re - turn a - gain. ———

## Chorus

In the heart of the Le - high Val - ley, Mid the

Penn - syl va - nia hills ————— Though far a way ————— Each

night and day — I seem to hear my sweet-heart say, — I am

long-ing for your — re - turn, — Till the day when you do — I will

yearn, — In the heart of the Le - high Val - ley There's a

heart still beats for me. — In the me. —

# THE 2 BIGGEST HITS OF THE SEASON

## DRIFTING

Words by  
ARTHUR J. LAMB

Music by  
WILLIAM POLLA

Drift - ing, drift - ing, down life's stream  
Red lips smile while bright eyes beam.

The musical score for "Drifting" consists of two systems. Each system has a vocal line on a single treble clef staff and a piano accompaniment on a grand staff (treble and bass clefs). The first system includes lyrics: "Drift - ing, drift - ing, down life's stream". The second system includes lyrics: "Red lips smile while bright eyes beam." The piano accompaniment features a prominent triplet of eighth notes in the right hand, marked with a *mf* dynamic.

Copyright MCMXX by C. C. Church & Co., Hartford, Conn., U. S. A.  
International Copyright Secured All Rights Reserved

## MY SWEETIE KNOWS

Words by  
PHIL PONCE

Music by  
EARNEST GOLDEN

Chorus  
My sweet - ie knows — what makes me hap py, — Be - lieve me My sweet - ie knows —  
— what makes me glad — Say he's got a way — of get - tin'

The musical score for "My Sweetie Knows" features a chorus with two lines of lyrics. The first line is: "My sweet - ie knows — what makes me hap py, — Be - lieve me My sweet - ie knows —". The second line is: "— what makes me glad — Say he's got a way — of get - tin'". The score includes a vocal line on a single treble clef staff and a piano accompaniment on a grand staff. The piano part begins with a *p-f* dynamic marking.

Copyright MCMXX by C. C. Church & Co., Hartford, Conn., U. S. A.  
All Rights Reserved Sole Australian Agents, Nicholson & Co., Ltd., Sydney International Copyright Secured  
Sole Agent for France, Oscar Osso, 125 Faubourg Poissonniere, Paris