

The University of Maine DigitalCommons@UMaine

Vocal Popular Sheet Music Collection

Public domain (may be downloaded in full)

1915

I'm A Lonesome Melody

George W Meyer
Composer

Joe Young
Lyricist

Barbelle
Illustrator

Follow this and additional works at: <https://digitalcommons.library.umaine.edu/mmb-vp>

Recommended Citation

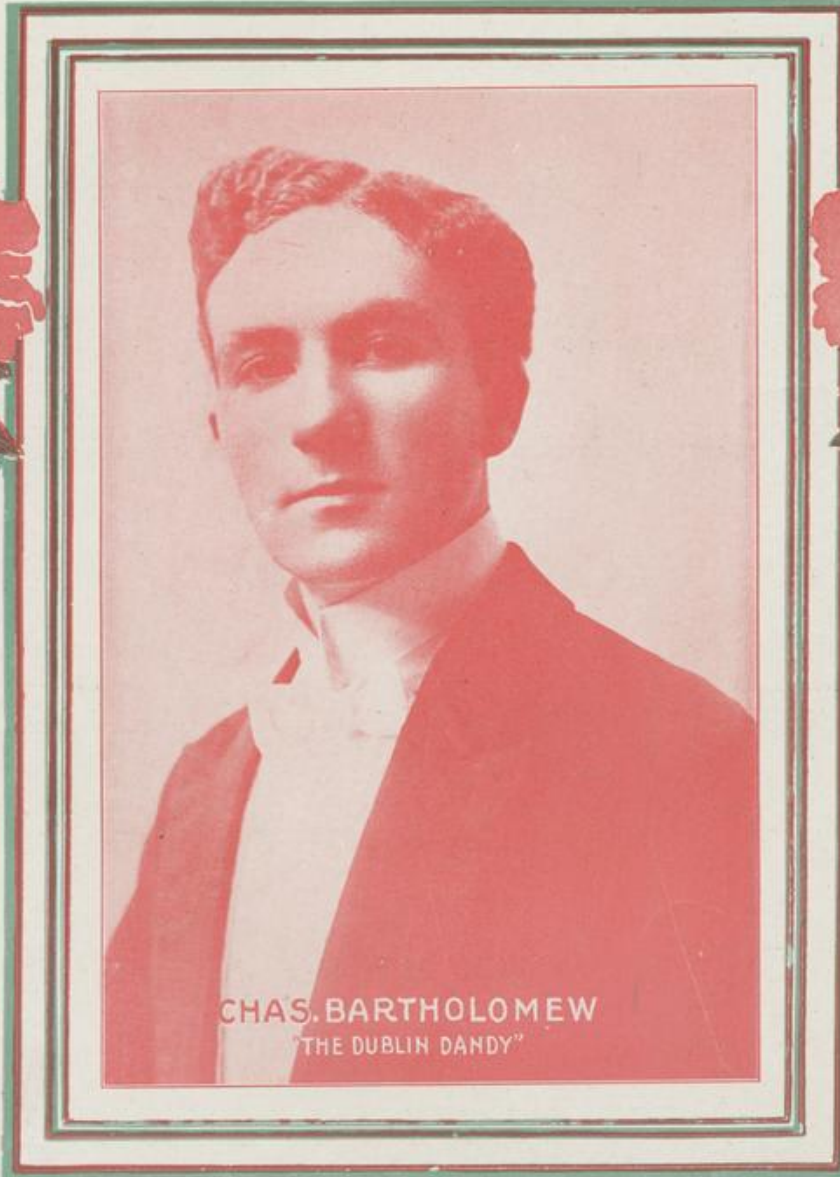
Meyer, George W; Young, Joe; and Barbelle, "I'm A Lonesome Melody" (1915). *Vocal Popular Sheet Music Collection*. Score 2513.
<https://digitalcommons.library.umaine.edu/mmb-vp/2513>

This Book is brought to you for free and open access by DigitalCommons@UMaine. It has been accepted for inclusion in Vocal Popular Sheet Music Collection by an authorized administrator of DigitalCommons@UMaine. For more information, please contact um.library.technical.services@maine.edu.

I'M A LONESOME MELODY

WORDS BY
JOE YOUNG

MUSIC BY
GEO. W. MEYER



CHAS. BARTHOLOMEW
"THE DUBLIN DANDY"

KALMAY & PUEK
MUSIC CO.
112 WEST 48TH ST. NEW YORK CITY

BARDEN LI

vp. 008766
1915
I'm

I'm A Lonesome Melody.

Words by
JOE YOUNG.

Music by
GEO. W. MEYER.

Moderato.

f

Vamp.

p

Last night when I came home
Poor lone-some mel - o - dy

Down heart-ed and a - lone
You have my sym - pa - thy

Try-ing to keep a -
Tho' I have trou - bles

way the tears_ I took the songs of by-gone years
of my own_ I hate to see_ you here a - lone

I played most ev' - ry one ——— When I was near - ly
I'll make a friend — of you ——— Now while I'm sad — and

done ——— One mel - o - dy — I tried to play —
blue ——— We'll cheer each oth - er when I play —

This mel - o - dy ——— just seemed to say. —
No more I hope ——— to hear you say. —

Chorus.

I'm ——— a lone - some mel - o - dy ———

p-f

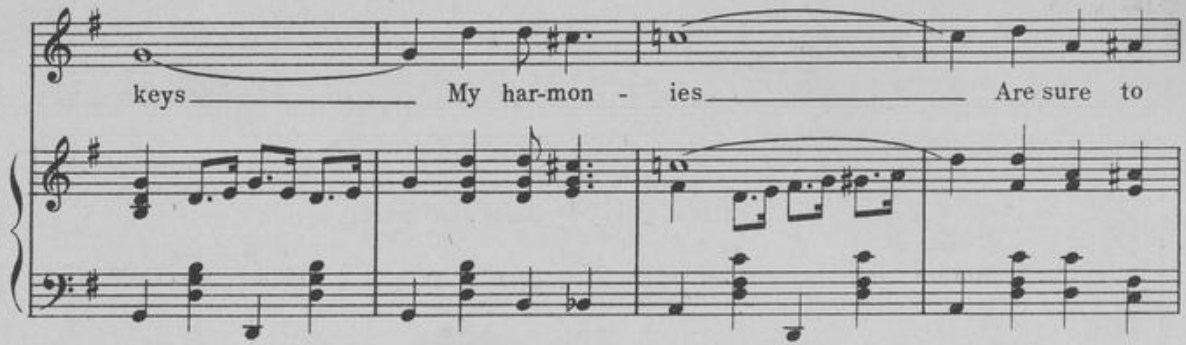
I want to be, With com-pan - y

For man - y years I've laid a - round and now That

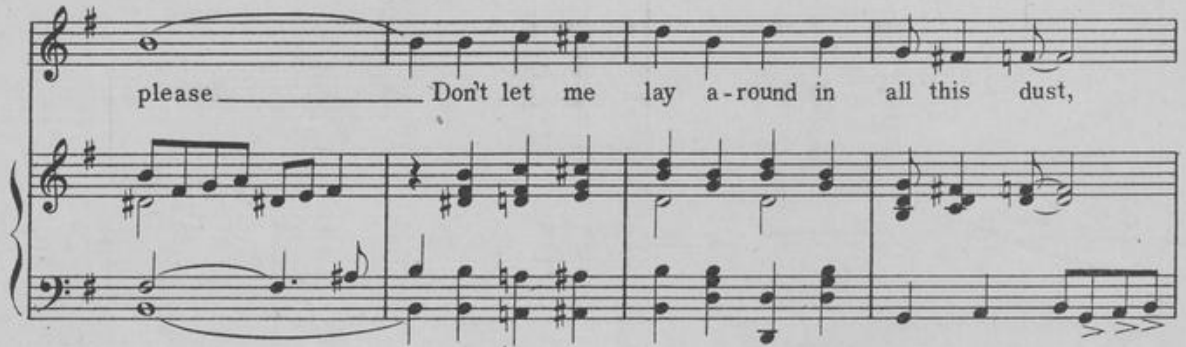
I've been found I wish You'd let this lone - some

mel - o - dy have lib - er - ty Run me up and down the

keys _____ My har-mon - ies _____ Are sure to



please _____ Don't let me lay a-round in all this dust,



Syn - co-pate me if you must I'm _____ a lone-some mel - o -



1. dy. _____ 2. dy. _____





America, I Love You.

Words by
EDGAR LESLIE

Music by
ARCHIE GOTTLER.

Chorus.

A - mer - i ca, I love you, You're like a

p-f

sweet-heart of mine, From o - cean to o - cean, For

you my de - vot-ion, Is touch-ing each bound' - ry line,

Just like a lit - tle ba - by

Copyright MCMXV by Kalmar & Park

